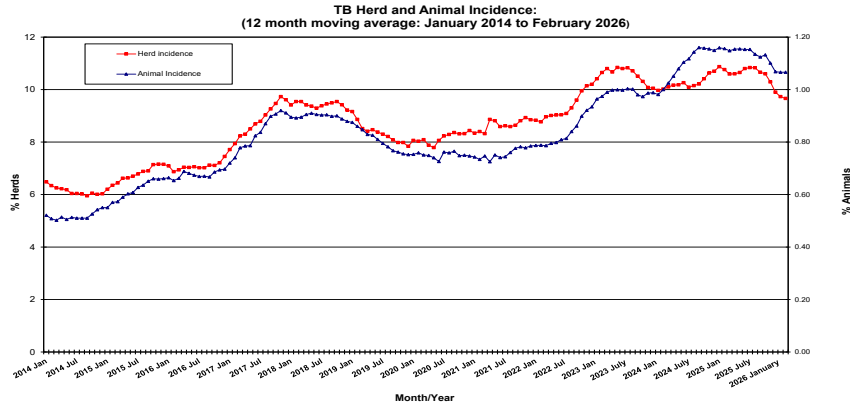
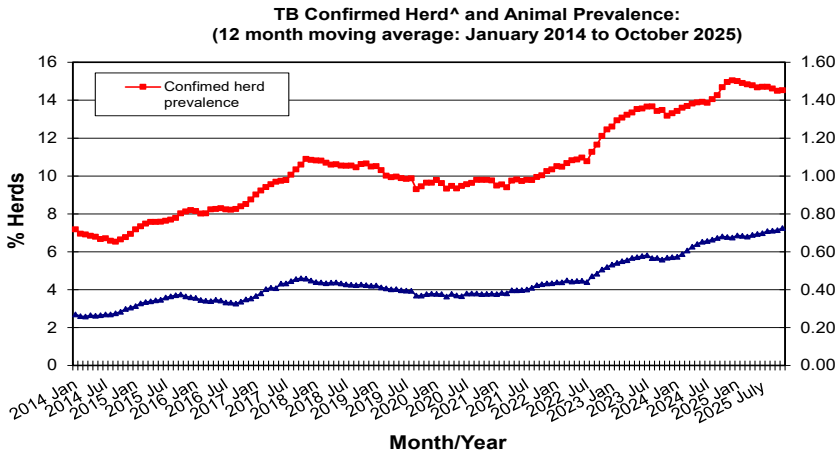


Tuberculosis: Statistics for February 2026



Disease statistics

Annual herd incidence over the last 12 months (%)	9.66	
Annual herd incidence over the last 13-24 months (%)	10.75	
2025 Herd Incidence (%)	9.90	
Annual animal incidence over the last 12 months (%)	1.066	
Annual animal incidence over the last 13-24 months (%)	1.155	
2025 Animal Incidence (%)	1.068	
Confirmed TB herd prevalence in last 12 months (%)	14.53	for Month = October 2025
Confirmed TB herd prevalence in last 13-24 months (%)	14.69	for Month = October 2025
Confirmed TB herd prevalence in 2024 (%)	15.05	
Confirmed TB animal prevalence in last 12 months (%)	0.726	for Month = October 2025
Confirmed TB animal prevalence in last 13-24 months (%)	0.681	for Month = October 2025
Confirmed TB animal prevalence in 2024 (%)	0.675	



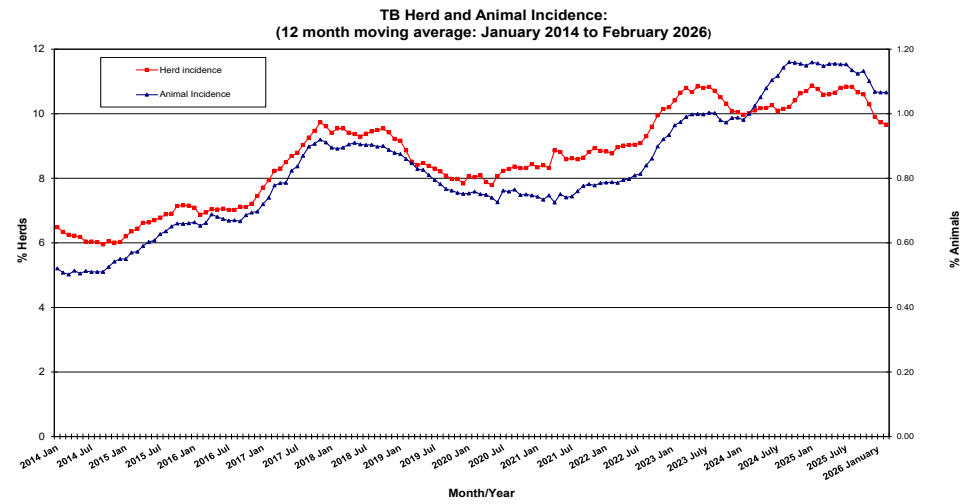
TB skin test reactors

No. of TB reactor animals since start of year	3,336
No. of reactor animals in the previous 12 months	18,906
No. of reactor animals in the previous 13-24 months	20,690

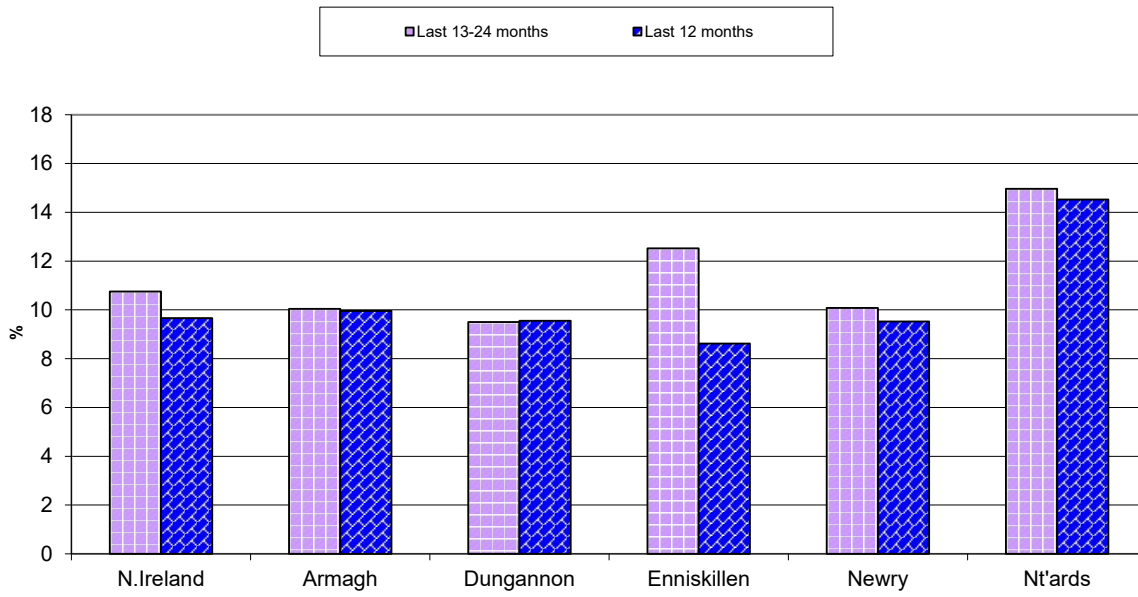
Herds & animals tested

No. herds with herd test during last 12 months	21,339
No. herds with herd test during last 13-24 months	21,510
No. herds with herd test during 2025	21,386
No. animals TB tested in previous 12 months	1,773,043
No. animals TB tested in previous 13-24 months	1,790,635
No. animals TB tested in 2025	1,768,644

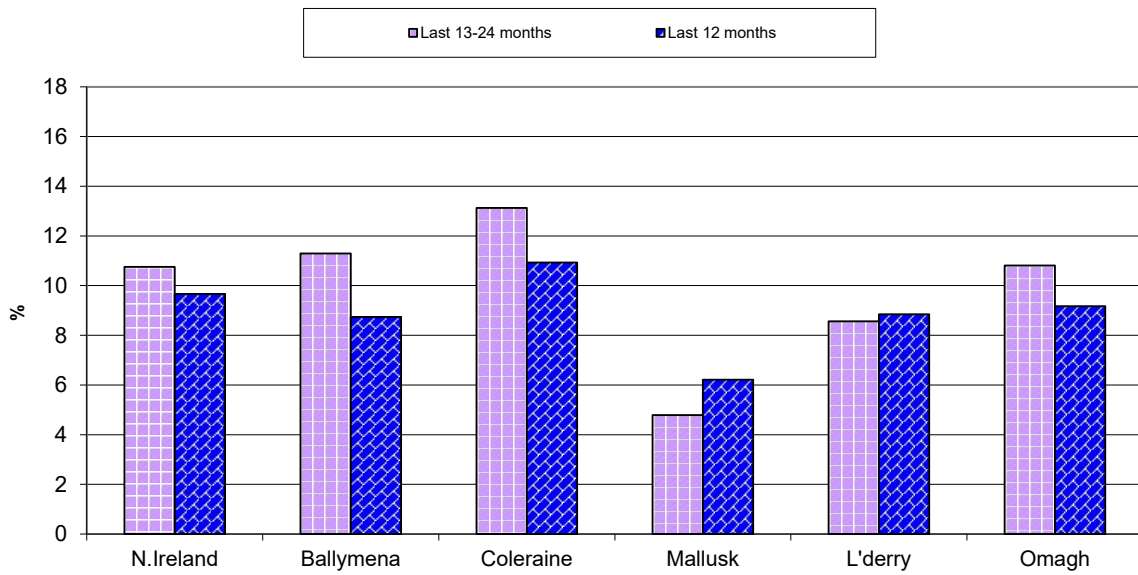
For definitions of these parameters, refer to the 'Explanatory Comments' worksheet: [Click here](#)

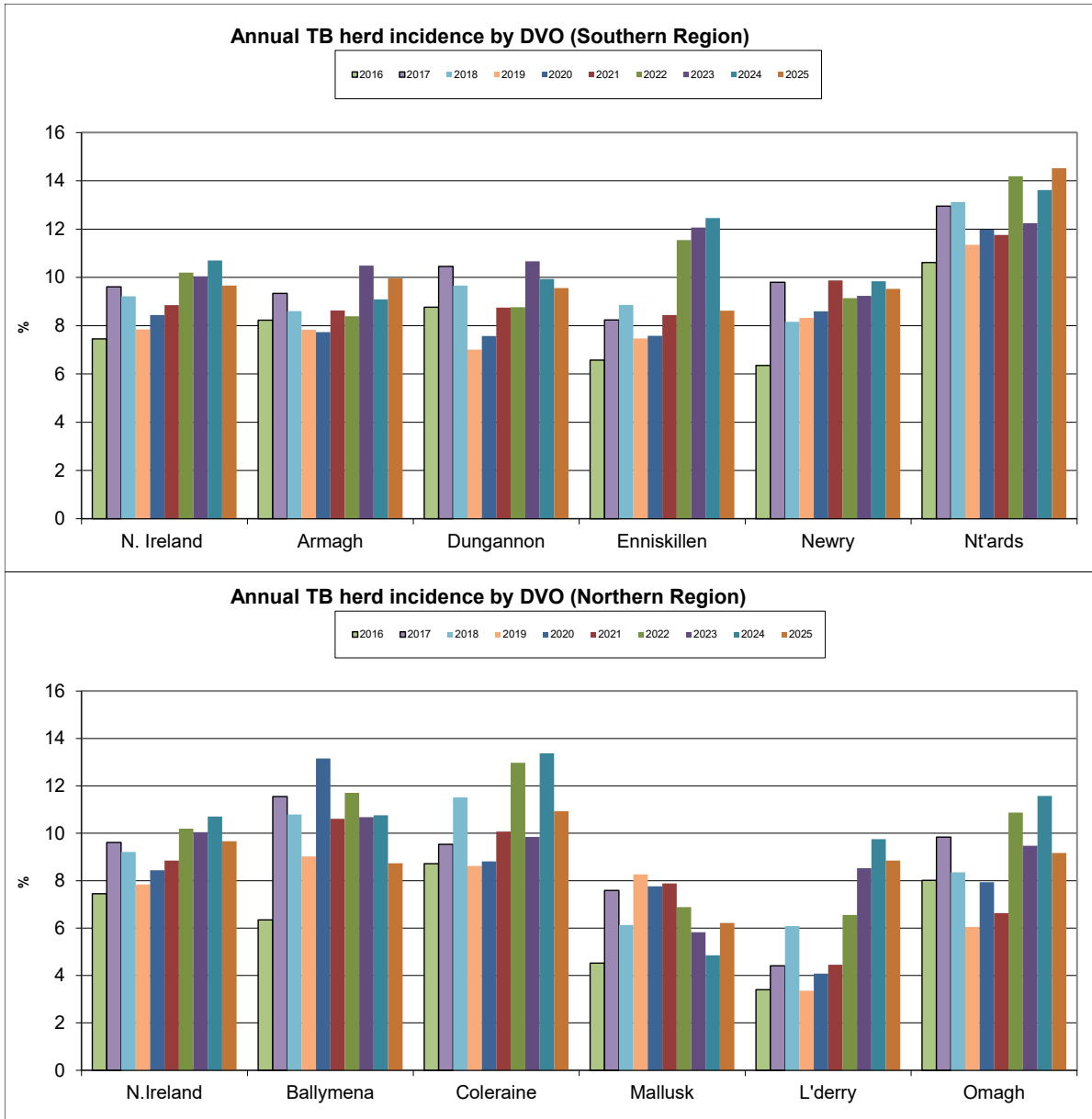


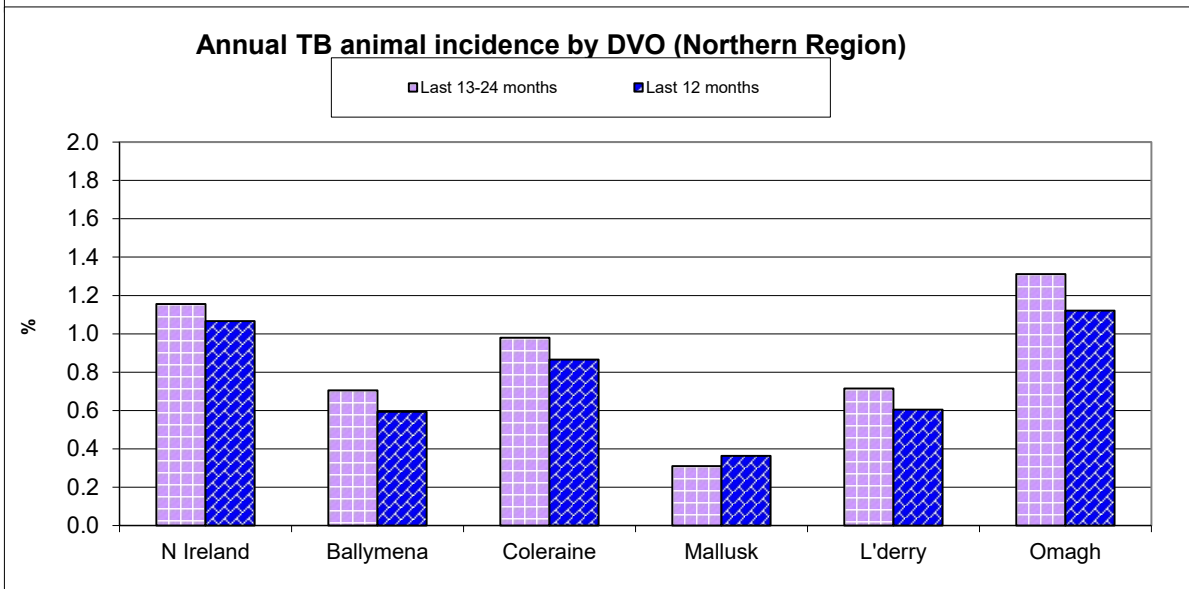
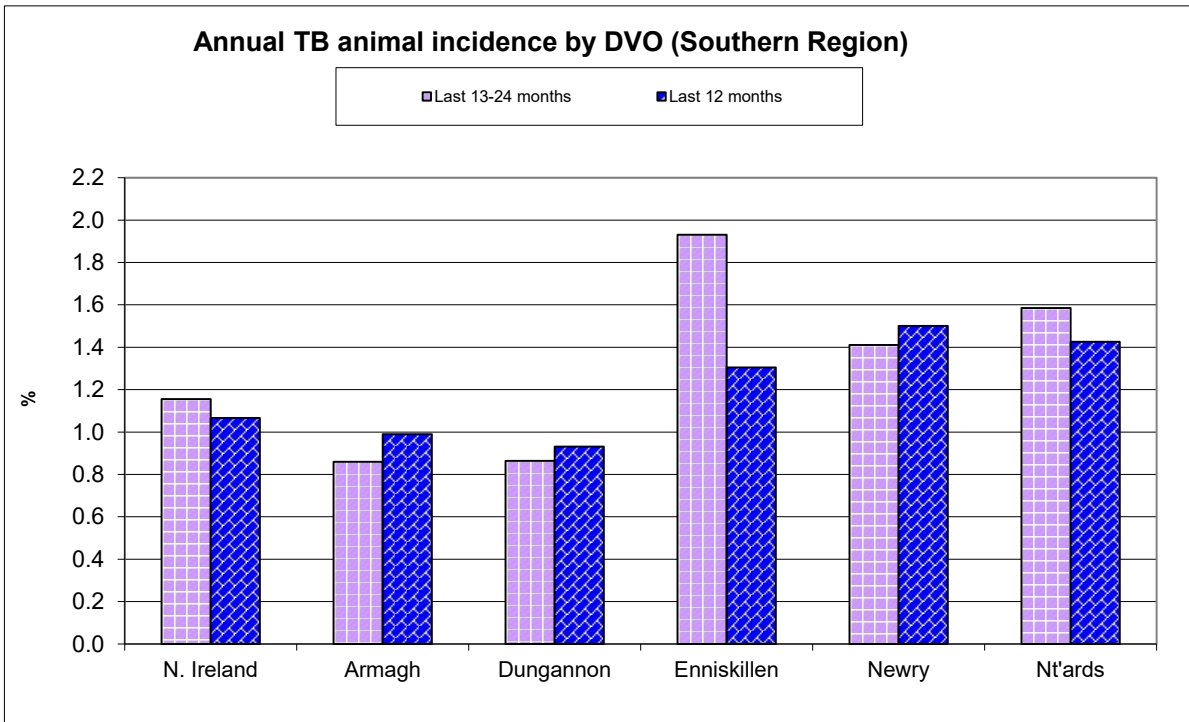
Annual TB herd incidence by DVO (Southern Region)



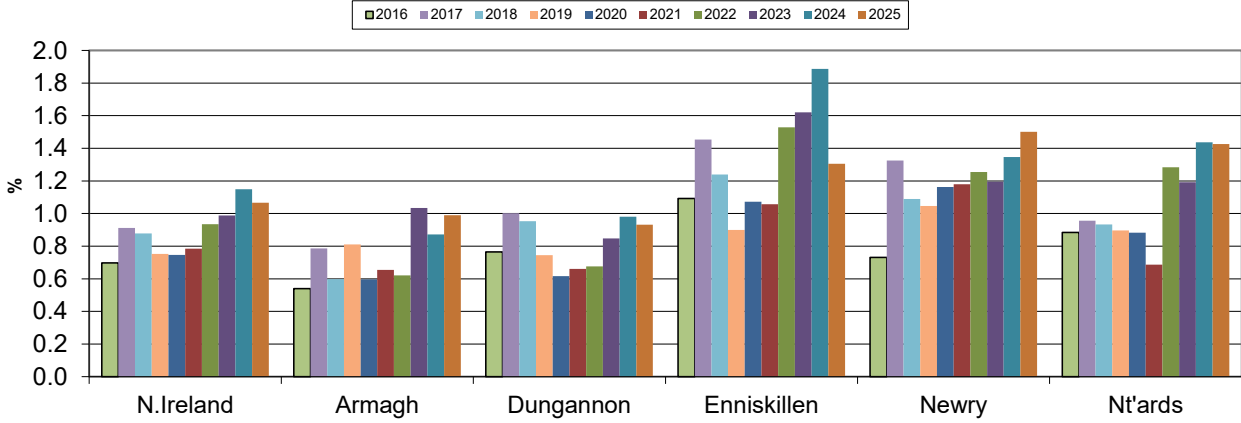
Annual TB herd incidence by DVO (Northern Region)



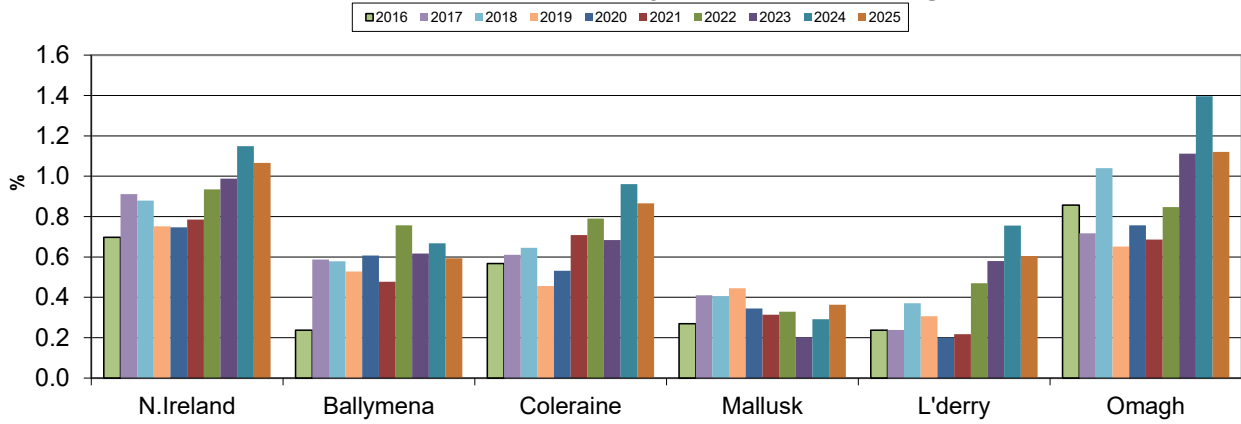


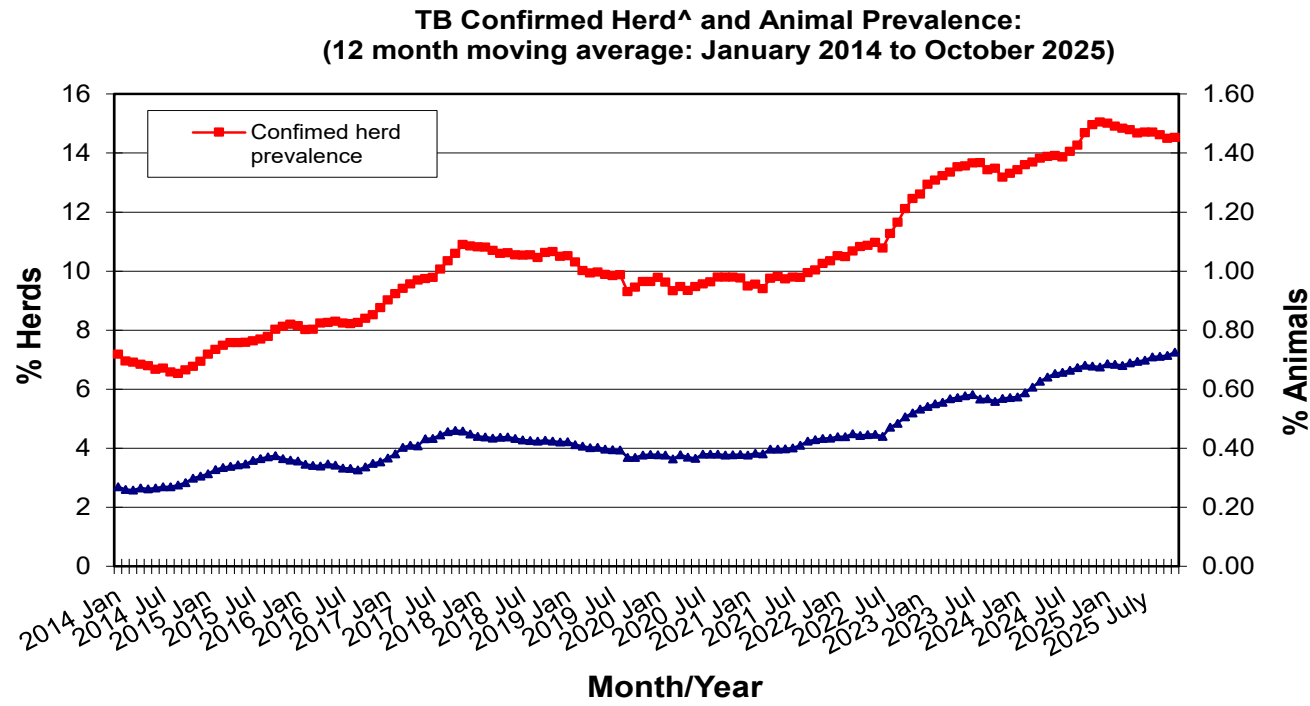


Annual TB animal incidence by DVO (Southern Region)

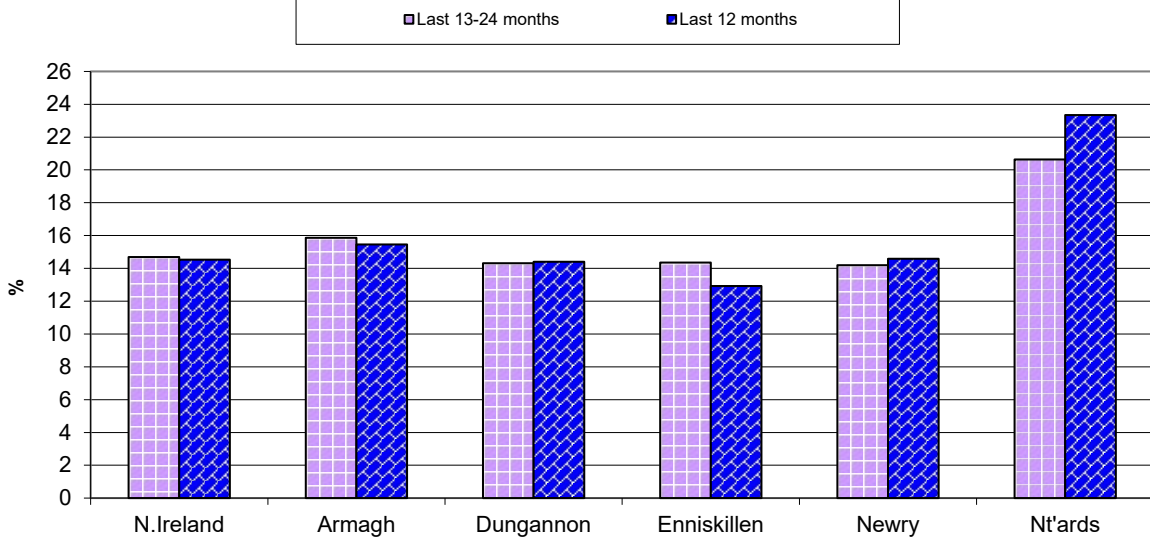


Annual TB animal incidence by DVO (Northern Region)



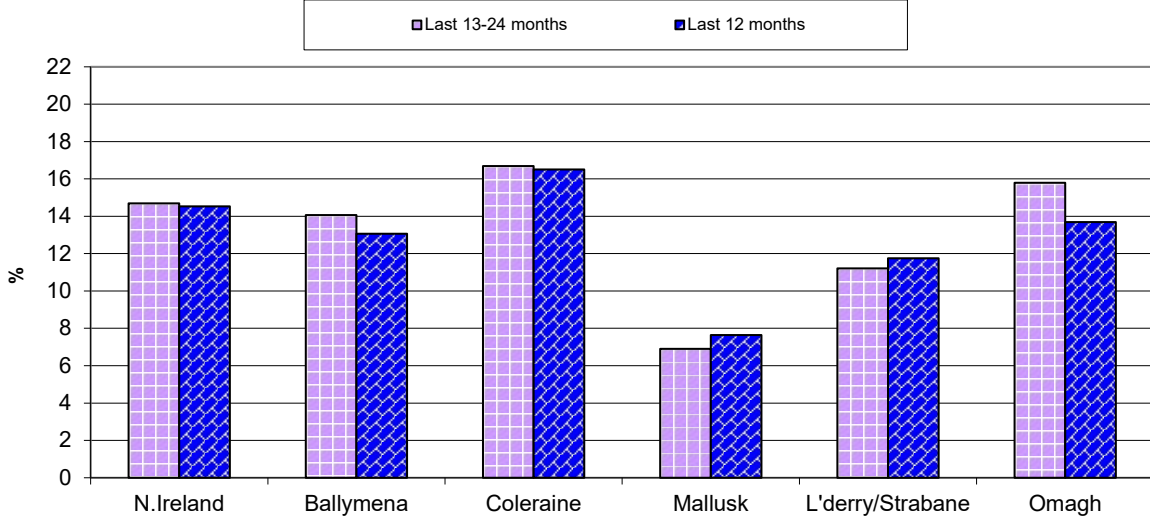


Annual confirmed TB herd prevalence[^] by DVO (Southern Region)



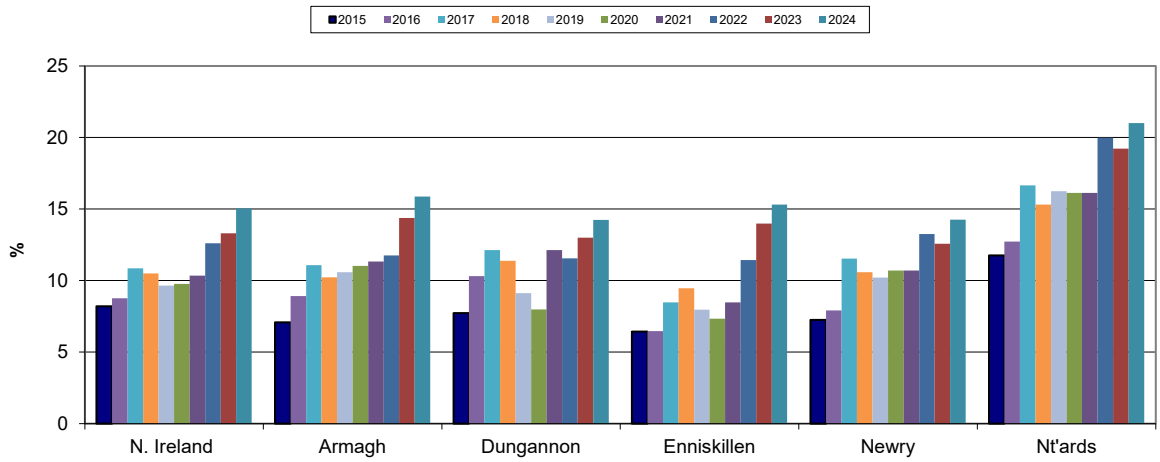
[^] numerator includes all herds that had confirmed TB within the 12 month period

Annual confirmed TB herd prevalence[^] by DVO (Northern Region)



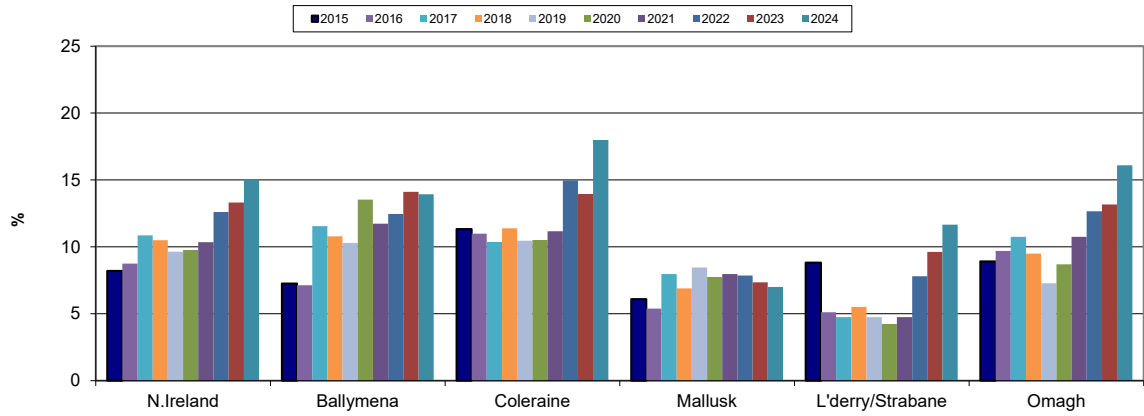
[^] numerator includes all herds that had confirmed TB within the 12 month period

Annual confirmed TB herd prevalence by DVO (Southern Region)



^ numerator includes all herds that had confirmed TB within the 12 month period

Annual confirmed TB herd prevalence by DVO (Northern Region)



Month = February 2026

Ref.		Total	Armagh	Ballymena	Coleraine	Dungannon	Enniskillen	L'derry/Strabane	Mallusk	Newry	Nt'ards	Omagh
d3	No. of new reactor herds since start of year	324	40	20	39	21	32	21	18	56	46	31
d4	No. of new reactor herds in the previous 12 months	2062	210	112	259	246	236	108	92	338	252	209
d26	No. of new reactor herds in the previous 13-24 months	2313	217	145	312	248	347	106	71	355	262	250
d6	No. of TB reactor animals since start of year	3336	439	159	422	229	469	112	79	713	371	343
d7	No. of reactor animals in the previous 12 months	18906	1976	760	2108	2011	2210	673	546	3858	2714	2050
d27	No. of reactor animals in the previous 13-24 months	20690	1701	922	2407	1887	3383	791	473	3613	3040	2473
d9	Annual herd incidence over the last 12 months (%)	9.66	9.96	8.74	10.93	9.55	8.62	8.85	6.21	9.52	14.52	9.17
d28	Annual herd incidence over the last 13-24 months (%)	10.75	10.04	11.29	13.13	9.50	12.52	8.56	4.79	10.08	14.96	10.81
d38	2025 Herd Incidence (%)	9.90	9.89	9.01	11.49	10.33	9.34	7.98	6.04	9.75	14.76	9.00
d30	2024 Herd Incidence (%)	10.70	9.09	10.76	13.38	9.93	12.45	9.75	4.86	9.84	13.62	11.57
d16	2023 Herd Incidence (%)	10.05	10.49	10.68	9.85	10.67	12.06	8.52	5.83	9.24	12.24	9.48
d10	2022 Herd Incidence (%)	10.20	8.39	11.71	12.95	8.78	11.56	6.56	6.88	9.14	14.18	10.88
d11	2021 Herd Incidence (%)	8.85	8.63	10.61	10.07	8.75	8.44	4.45	7.88	9.87	11.81	6.63
d12	Annual animal incidence over the last 12 months (%)	1.066	0.990	0.593	0.866	0.931	1.305	0.604	0.363	1.501	1.426	1.121
d29	Annual animal incidence over the last 13-24 months (%)	1.155	0.860	0.705	0.980	0.864	1.931	0.715	0.310	1.411	1.585	1.312
d39	2025 Animal Incidence (%)	1.068	0.871	0.596	0.856	0.944	1.310	0.618	0.362	1.451	1.569	1.108
d31	2024 Animal Incidence (%)	1.149	0.872	0.668	0.961	0.980	1.886	0.756	0.292	1.346	1.436	1.397
d15	2023 Animal Incidence (%)	0.988	1.034	0.617	0.684	0.848	1.621	0.580	0.202	1.195	1.192	1.111
d13	2022 Animal Incidence (%)	0.937	0.647	0.757	0.791	0.676	1.529	0.469	0.329	1.255	1.284	0.847
d14	2021 Animal Incidence (%)	0.786	0.654	0.477	0.708	0.661	1.057	0.218	0.315	1.180	1.031	0.686
d17	Current 12 month moving average APT	5.50	5.48	3.20	4.48	5.23	7.06	3.55	2.30	7.66	6.79	5.97
d40	2025 APT	5.44	4.89	3.18	4.38	5.32	6.92	3.62	2.24	7.47	7.32	5.86
d32	2024 APT	5.95	4.77	3.49	5.01	5.49	10.07	4.55	1.84	7.21	7.16	7.36
d18	2023 APT	5.09	5.76	3.26	3.54	4.73	8.34	3.82	1.22	6.25	5.87	6.01
d19	2022 APT	4.84	3.63	3.98	4.18	3.78	8.37	3.20	1.82	6.48	6.29	4.53
d42	2021 APT	4.14	3.77	2.52	3.74	3.89	5.83	1.61	1.73	6.15	5.09	3.92

No. Negative in contacts over last 12 months

Tuberculosis: number of reactor animals by month and by DVO 2026

2026		DVO_CODE										
Year	Month	Armagh	Ballymena	Coleraine	Dungannon	Enniskillen	L'derry/Strabane	Mallusk	Newry	Nt'Ards	Omagh	Total
2026	1	221	98	209	155	372	67	61	303	201	229	1916
2026	2	218	61	213	74	97	45	18	410	170	114	1420
2026	3											0
2026	4											0
2026	5											0
2026	6											0
2026	7											0
2026	8											0
2026	9											0
2026	10											0
2026	11											0
2026	12											0
Total		439	159	422	229	469	112	79	713	371	343	3336

Tuberculosis: number of reactor animals by month and by DVO 2025

2025		DVO_CODE										
Year	Month	Armagh	Ballymena	Coleraine	Dungannon	Enniskillen	L'derry/Strabane	Mallusk	Newry	Nt'Ards	Omagh	Total
2025	1	102	125	249	105	335	93	58	275	333	184	1859
2025	2	95	39	148	154	177	23	16	326	331	154	1463
2025	3	140	43	170	197	281	46	20	258	212	182	1549
2025	4	164	127	178	160	103	53	130	292	188	183	1578
2025	5	150	56	206	122	200	24	38	278	300	161	1535
2025	6	82	44	121	120	155	105	33	252	214	172	1298
2025	7	144	60	148	263	169	34	34	271	271	135	1529
2025	8	251	85	189	174	192	58	78	410	306	156	1899
2025	9	85	19	122	249	127	20	5	287	236	245	1395
2025	10	190	70	244	161	164	124	52	460	198	237	1900
2025	11	191	84	183	277	204	48	63	266	237	132	1685
2025	12	140	13	125	59	146	49	14	371	181	104	1202
Total		1734	765	2083	2041	2253	677	541	3746	3007	2045	18892

Tuberculosis: number of reactor animals by month and by DVO 2024

2024		DVO_CODE										
Year	Month	Armagh	Ballymena	Coleraine	Dungannon	Enniskillen	L'derry/Strabane	Mallusk	Newry	Nt'Ards	Omagh	Total
2024	1	142	62	202	285	242	55	15	226	162	201	1592
2024	2	76	59	162	211	231	107	34	192	198	280	1550
2024	3	322	76	164	151	197	76	33	378	200	169	1766
2024	4	111	60	178	178	229	91	34	193	245	215	1534
2024	5	187	92	93	172	174	93	10	344	162	185	1512
2024	6	114	79	106	75	202	28	21	323	165	218	1331
2024	7	96	54	225	93	359	41	61	189	324	85	1527
2024	8	173	107	215	242	360	41	30	322	394	405	2289
2024	9	124	96	278	128	239	88	45	236	250	163	1647
2024	10	108	57	184	121	413	65	59	280	223	236	1746
2024	11	181	105	285	237	436	100	66	442	211	293	2356
2024	12	88	32	282	231	262	52	40	305	202	166	1660
Total		1722	879	2374	2124	3344	837	448	3430	2736	2616	20510

A TB reactor animal is defined as an animal where the manual interpretation field for a skin test is positive ('P') with the first test date being taken as the time at which the animal became a reactor. Animals with lesions at routine slaughter ('LRS') are not taken into account.

Tuberculosis: number of reactor herds by month and by DVO in 2026 and unique herd breakdowns during the year

2026		DVO_CODE										
Year	Month	Armagh	Ballymena	Coleraine	Dungannon	Enniskillen	L'derry/Strabane	Mallusk	Newry	Nt'Ards	Omagh	Total
2026	1	21	10	22	13	17	12	11	23	22	16	167
2026	2	19	10	17	8	15	9	7	33	24	15	157
2026	3											0
2026	4											0
2026	5											0
2026	6											0
2026	7											0
2026	8											0
2026	9											0
2026	10											0
2026	11											0
2026	12											0
Total		40	20	39	21	32	21	18	56	46	31	324

Unique Herd Breakdowns		DVO_CODE										
Year	Armagh	Ballymena	Coleraine	Dungannon	Enniskillen	L'derry/Strabane	Mallusk	Newry	Nt'Ards	Omagh	Total Herds	
2026	78	40	109	53	67	43	33	142	95	55	715	

Tuberculosis: number of reactor herds by month and by DVO in 2025 and unique herd breakdowns during the year

2025		DVO_CODE										
Year	Month	Armagh	Ballymena	Coleraine	Dungannon	Enniskillen	L'derry/Strabane	Mallusk	Newry	Nt'Ards	Omagh	Total
2025	1	22	14	30	24	29	7	11	33	25	18	213
2025	2	19	10	24	17	24	3	4	31	26	9	167
2025	3	19	10	28	17	21	8	4	31	26	16	180
2025	4	17	15	26	20	18	12	9	31	20	23	191
2025	5	19	17	27	25	26	8	8	30	27	23	210
2025	6	13	10	14	22	13	11	10	28	18	21	160
2025	7	13	4	12	23	26	5	3	21	22	13	142
2025	8	20	10	14	26	17	11	9	31	22	16	176
2025	9	12	3	18	21	14	4	2	28	19	12	133
2025	10	19	10	28	26	27	15	11	32	24	27	219
2025	11	22	13	34	31	28	6	15	27	12	14	202
2025	12	16	0	19	14	14	7	3	23	16	13	125
Total		211	116	274	266	257	97	89	346	257	205	2118

Unique Herd Breakdowns		DVO_CODE										
Year	Armagh	Ballymena	Coleraine	Dungannon	Enniskillen	L'derry/Strabane	Mallusk	Newry	Nt'Ards	Omagh	Total Herds	
2025	294	180	419	381	361	131	111	512	385	307	3081	

Tuberculosis: number of reactor herds by month and by DVO in 2024 and unique herd breakdowns during the year

2024		DVO_CODE										
Year	Month	Armagh	Ballymena	Coleraine	Dungannon	Enniskillen	L'derry/Strabane	Mallusk	Newry	Nt'Ards	Omagh	Total
2024	1	11	8	24	25	27	10	9	34	11	19	178
2024	2	10	10	37	28	24	16	7	25	19	27	203
2024	3	20	14	28	23	23	18	8	30	27	26	217
2024	4	19	8	16	27	24	10	7	25	22	29	187
2024	5	19	11	23	26	30	12	3	28	19	22	193
2024	6	11	8	20	15	14	2	2	25	14	17	128
2024	7	10	12	16	13	28	0	5	28	13	8	133
2024	8	19	15	27	18	32	3	3	27	18	25	187
2024	9	12	9	37	15	22	9	5	32	24	14	179
2024	10	22	14	29	21	35	9	9	38	21	37	235
2024	11	27	19	38	27	47	16	8	35	32	28	277
2024	12	17	11	24	22	39	17	6	23	21	17	197
Total		197	139	319	260	345	122	72	350	241	269	2314

Unique Herd Breakdowns		DVO_CODE										
Year	Armagh	Ballymena	Coleraine	Dungannon	Enniskillen	L'derry/Strabane	Mallusk	Newry	Nt'Ards	Omagh	Total Herds	
2024	293	200	444	388	468	165	95	502	358	357	3270	

A herd is defined as being a TB reactor herd if it had at least one TB reactor animal in that month and no TB reactor animals during the previous 12 months.

A TB unique herd breakdown is defined as a herd which has had at least one TB reactor during the specified calendar year irrespective of any TB reactors during the previous calendar year.

		Month = February 2026										
Ref.		Total	Armagh	Ballymena	Coleraine	Dungannon	Enniskillen	L'derry/Strabane	Mallusk	Newry	Nt'ards	Omagh
b22	No. herds with herd test during last 12 months	21339	2109	1282	2370	2575	2738	1221	1481	3549	1735	2279
b31	No. herds with herd test during last 13-24 months	21510	2161	1284	2377	2610	2771	1238	1483	3522	1751	2313
b39	No. herds with herd test during 2025	21386	2133	1288	2385	2575	2751	1215	1474	3547	1741	2277
b32	No. herds with herd test during 2024	21617	2167	1292	2385	2618	2770	1251	1483	3557	1770	2324
b28	No. herds with herd test during 2023	21889	2184	1311	2407	2653	2810	1267	1510	3605	1789	2353
b23	No. herds with herd test during 2022	22096	2194	1324	2417	2678	2838	1281	1527	3644	1812	2381
b24	No. herds with herd test during 2021	22249	2213	1329	2442	2710	2879	1281	1536	3639	1820	2400

Month = February 2026

Ref		Total	Armagh	Ballymena	Coleraine	Dungannon	Enniskillen	L'derry/Strabane	Mallusk	Newry	Nt'ards	Omagh
c19	No. animals TB tested in previous 12 months	1773043	199638	128081	243532	215940	169390	111335	150274	257083	190347	182886
c24	No. animals TB tested in previous 13-24 months	1790635	197893	130771	245723	218402	175212	110665	152575	256095	191792	188559
c26	No. animals TB tested in 2025	1768644	199193	128309	243262	216196	172006	109496	149338	258078	191618	184622
c25	No. animals TB tested in 2024	1785562	197397	131537	247040	216670	177263	110731	153326	254794	190497	187296
c22	No. animals TB tested in 2023	1836111	200064	136769	254468	222881	185268	110171	160039	261832	200296	190859
c20	No. animals TB tested in 2022	1853339	199883	136732	251728	223153	185197	111653	166081	268959	203477	195084
c21	No. animals TB tested in 2021	1827767	198186	135564	250008	223998	184336	109365	164008	265500	199776	185037

Ref	Month = October 2025 (Data lagged by 4 months)	Total										
			Armagh	Ballymena	Coleraine	Dungannon	Enniskillen	L'derry/Strabane	Mallusk	Newry	Nt'ards	Omagh
e19	Num. TB culture positive animals that were not TB reactors in last 12 months	2438	415	69	216	335	82	39	127	585	293	277
e20	Num. TB culture positive animals that were not TB reactors in last 13-24 months	2337	342	82	245	321	116	47	119	560	247	258
e4	Num. TB culture positive animals that were not TB reactors in 2024	2429	378	76	248	332	107	49	127	592	256	264
e6	Num. TB culture positive animals that were not TB reactors in 2023	1705	251	60	169	241	82	18	88	427	198	171
e2	Num. TB culture positive animals that were not TB reactors in 2022	1437	214	56	146	190	66	17	87	336	180	145
e3	Num. TB culture positive animals that were not TB reactors in 2021	1087	174	43	94	126	39	12	63	337	125	74
e5	Num. TB culture positive animals that were not TB reactors in 2020	1149	172	45	109	125	38	21	68	303	153	115
e21	No. herds with TB culture positive animals that were not TB reactors in last 12 months	1065	161	45	111	145	52	27	56	205	147	116
e22	No. herds with TB culture positive animals that were not TB reactors in last 13-24 months	1089	165	58	127	139	74	30	47	180	140	129
e12	No. herds with TB culture positive animals that were not TB reactors in 2024	1111	169	54	126	148	71	33	50	190	140	130
e8	No. herds with TB culture positive animals that were not TB reactors in 2023	837	117	44	90	108	57	15	45	161	110	90
e9	No. herds with TB culture positive animals that were not TB reactors in 2022	733	121	35	72	95	38	17	38	140	103	74
e10	No. herds with TB culture positive animals that were not TB reactors in 2021	562	94	27	46	60	26	10	32	138	80	49
e11	No. herds with TB culture positive animals that were not TB reactors in 2020	565	89	31	61	72	23	16	35	104	86	48
e23	% of TB animals that were TB culture positive that were not TB reactors in last 12 months	10.9	19.9	7.9	8.4	13.4	3.1	5.1	18.2	13.2	8.9	10.9
e24	% of TB animals that were TB culture positive that were not TB reactors in last 13-24 months	10.2	15.2	8.4	10.0	13.5	3.5	5.4	23.2	14.2	7.8	8.3
e18	% of TB animals that were TB culture positive that were not TB reactors in 2024	10.6	18.0	8.0	9.5	13.5	3.1	5.5	22.1	14.7	8.6	9.2
e14	% of TB animals that were TB culture positive that were not TB reactors in 2023	8.5	12.6	5.7	7.7	13.5	2.2	2.7	15.6	11.8	8.0	8.2
e15	% of TB animals that were TB culture positive that were not TB reactors in 2022	7.7	14.7	5.1	6.8	11.2	2.3	3.1	13.7	9.1	6.4	8.1
e16	% of TB animals that were TB culture positive that were not TB reactors in 2021	7.0	11.8	6.2	5.0	7.8	2.0	4.8	10.9	9.7	5.7	5.5
e17	% of TB animals that were TB culture positive that were not TB reactors in 2020	8.2	13.5	5.5	8.1	8.9	2.0	9.1	11.1	9.6	8.3	8.0

		Month = October 2025										
		(Data lagged by 4 months)										
Ref		Total	Armagh	Ballymena	Coleraine	Dungannon	Enniskillen	L'derry/Strabane	Mallusk	Newry	Nt'ards	Omagh
g31	No. of confirmed TB reactors during last 12 months	10399	931	460	1233	980	1276	393	273	1978	1849	1026
g32	No. of confirmed TB reactors during last 13-24 months	9785	962	406	1120	824	1397	418	155	1473	1668	1362
g6	No. of confirmed TB reactors 2024	9632	886	411	1202	811	1416	440	184	1525	1587	1170
g2	No. of confirmed TB reactors 2023	8791	1024	417	924	796	1432	322	135	1433	1351	957
g3	No. of confirmed TB reactors 2022	8449	619	508	1055	744	1326	249	265	1566	1413	704
g4	No. of confirmed TB reactors 2021	6841	585	303	919	615	889	118	270	1412	1203	527
g5	No. of confirmed TB reactors 2020	5379	514	358	526	458	749	73	226	1200	821	454
g33	Total animals with confirmed TB during last 12 months	12837	1346	529	1449	1315	1358	432	400	2563	2142	1303
g34	Total animals with confirmed TB in last 13-24 months	12122	1304	488	1365	1145	1513	465	274	2033	1915	1620
g12	Total animals with confirmed TB in 2024	12061	1264	487	1450	1143	1523	489	311	2117	1843	1434
g8	Total animals with confirmed TB in 2023	10496	1275	477	1093	1037	1514	340	223	1860	1549	1128
g9	Total animals with confirmed TB in 2022	9886	833	564	1201	934	1392	266	352	1902	1593	849
g10	Total animals with confirmed TB in 2021	7928	759	346	1013	741	928	130	333	1749	1328	601
g11	Total animals with confirmed TB in 2020	6528	686	403	635	583	787	94	294	1503	974	569
g35	Confirmed TB animal prevalence in last 12 months (%)	0.726	0.678	0.412	0.597	0.605	0.786	0.392	0.266	0.999	1.124	0.707
g36	Confirmed TB animal prevalence in last 13-24 months (%)	0.681	0.666	0.375	0.555	0.530	0.859	0.419	0.182	0.794	1.004	0.864
g18	Confirmed TB animal prevalence in 2024 (%)	0.675	0.640	0.370	0.587	0.528	0.859	0.442	0.203	0.831	0.967	0.766
g14	Confirmed TB animal prevalence in 2023 (%)	0.572	0.637	0.349	0.430	0.465	0.817	0.309	0.139	0.710	0.773	0.591
g15	Confirmed TB animal prevalence in 2022 (%)	0.533	0.417	0.412	0.477	0.419	0.752	0.238	0.212	0.707	0.783	0.435
g16	Confirmed TB animal prevalence in 2021 (%)	0.434	0.383	0.255	0.405	0.331	0.503	0.119	0.203	0.659	0.665	0.325
g17	Confirmed TB animal prevalence in 2020 (%)	0.379	0.372	0.317	0.273	0.281	0.458	0.090	0.187	0.612	0.506	0.327
g37	No. herds with confirmed TB in last 12 months	3106	330	168	391	373	354	145	113	516	405	311
g38	No. herds with confirmed TB in last 13-24 months	3171	345	181	399	373	396	140	102	505	363	367
g24	No. herds with confirmed TB in 2024	3253	344	180	429	373	424	146	104	507	372	374
g20	No. herds with confirmed TB in 2023	2913	314	185	336	345	393	122	111	453	344	310
g21	No. herds with confirmed TB in 2022	2786	258	164	363	310	325	98	120	483	362	303
g22	No. herds with confirmed TB in 2021	2303	251	156	273	258	241	51	118	463	307	185
g23	No. herds with confirmed TB in 2020	2154	241	178	254	214	209	54	119	386	292	207
g39	Confirmed TB herd prevalence in last 12 months (%)	14.53	15.46	13.06	16.50	14.40	12.92	11.75	7.64	14.58	23.34	13.69
g40	Confirmed TB herd prevalence in last 13-24 months (%)	14.69	15.86	14.06	16.69	14.31	14.35	11.21	6.90	14.19	20.64	15.79
g30	Confirmed TB herd prevalence in 2024 (%)	15.05	15.87	13.93	17.99	14.25	15.31	11.67	7.01	14.25	21.02	16.09
g26	Confirmed TB herd prevalence in 2023 (%)	13.31	14.38	14.11	13.96	13.00	13.99	9.63	7.35	12.57	19.23	13.17
g27	Confirmed TB herd prevalence in 2022 (%)	12.61	11.76	12.39	15.02	11.58	11.45	7.65	7.86	13.25	19.98	12.73
g28	Confirmed TB herd prevalence in 2021 (%)	10.35	11.34	11.74	11.18	9.52	8.37	3.98	7.68	12.72	16.87	7.71
g29	Confirmed TB herd prevalence in 2020 (%)	9.77	11.02	13.54	10.51	7.98	7.34	4.24	7.76	10.70	16.12	8.69

