

SUSTAINABLE AGRICULTURE PROGRAMME NEWSLETTER

Issue 1 - Spring 2026



Department of
**Agriculture, Environment
and Rural Affairs**

An Roinn
**Talmhaíochta, Comhshaoil
agus Gnóthaí Tuaithe**

Department o'
**Fairmin, Environment
an' Kintra Matthers**

www.daera-ni.gov.uk

In this issue

- SAP Goals **Page 3**
- Timeline **Page 4**
- Payment Schemes **Page 5**
- *Feature - Farm Sustainability Payment Scheme*
- Data Platforms **Page 13**
- Information and Knowledge Schemes **Page 16**

Introduction

Northern Ireland's farmers produce food of exceptional quality. Your dedication continues to underpin both our rural economy and our international reputation. I remain deeply proud of the farming community, of your hard work and professionalism that delivers the healthy, nutritious and sustainably produced food that we all enjoy.



As Minister, I want to see a thriving, resilient and environmentally sustainable future for our family farms and wider agri-food sector. I am however very aware that we are in a period of significant change and uncertainty with considerable challenges facing our farmers - from rising production costs and market pressures to climate change and nature decline.

The challenges that we collectively face are not insurmountable and by working together we can continue to shape solutions and take advantage of new opportunities for farming and agri-food.

We are continuing to develop the new Sustainable Agriculture Programme (SAP) to provide schemes that support farmers while improving the land, water and nature upon which we all rely. SAP reflects my commitment to farm businesses, focusing on enhancing productivity and profitability, improving soil health, promoting nature recovery, and reducing emissions.

Financial and environmental sustainability must go hand-in-hand and it is imperative that we are guided by science and evidence to maintain standards around disease control and ensure we retain the public's trust in food safety.

This first edition of the SAP Newsletter outlines upcoming changes to farm support schemes, including the new Farm Sustainability Payment. Together, through your participation, we can ensure that agriculture remains a cornerstone of our economy and plays a positive role in the stewardship of our environment.

Andrew Muir MLA
Minister of Agriculture, Environment
and Rural Affairs

Why is farm support changing?

Farming today is facing real pressures - from tighter budgets, fluctuating prices, rising input costs, rapid developments in technology to threats posed by climate change and environmental challenges. You, our farmers, remain central to meeting these challenges and to protecting our future food security.

That is why farm support is changing - to make sure that financial support and environmental

responsibility work hand in hand, supporting you to stay productive and profitable, while also looking after the land for the next generation.

It is about ensuring a strong, sustainable agriculture sector well into the future - for you, your families and the industry as a whole.





How will SAP support this change?

Through the SAP, DAERA is taking a new, more practical approach to support your farm business. The aim is to help you enhance productivity and profitability, while also looking after the land, water and nature that your business relies on.

The Programme provides over **£330 million** in support each year through a range of schemes, including **payment schemes, data platforms** and those that provide **information and knowledge** so you can choose the options that best suit your farm business. It's designed to give you flexibility, support good decision making and help keep your business strong for the future.

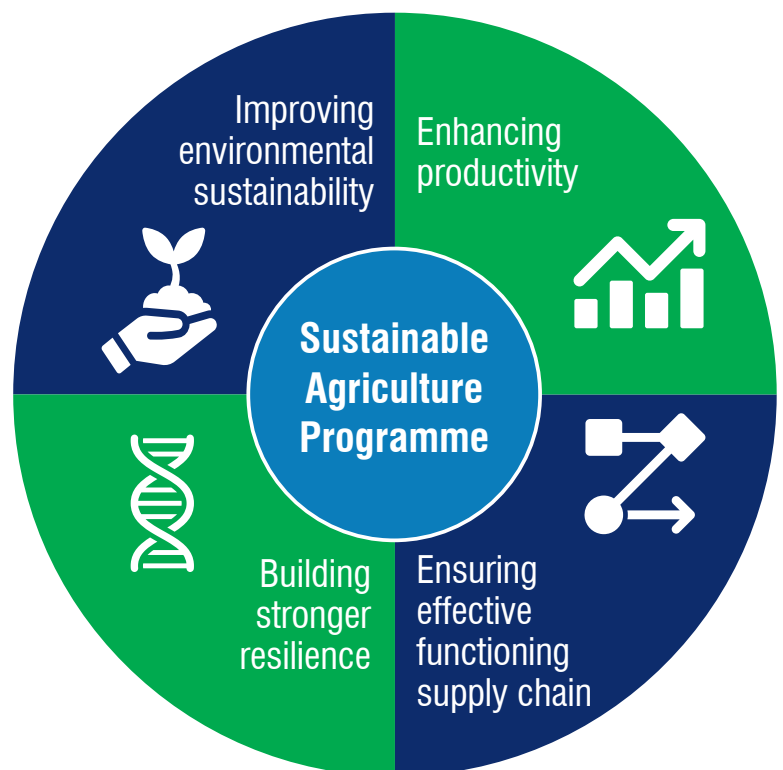
The SAP is built around four key goals

Improving environmental sustainability by providing support to carry out more environmentally friendly practices on your land to enhance your farm's productivity while reducing emissions.

Enhancing productivity by providing you with financial support to invest in technologies and adopt new systems along with the training and know-how needed to use these tools effectively.

Building stronger resilience by providing support for long term planning and an annual Farm Sustainability Payment.

Ensuring an effective functioning supply chain by providing support to encourage collaboration and address the current challenges and opportunities within the supply chain such as information flow and fragmentation.



SAP Timeline



LAUNCHED IN 2024

- Pilot Protein Crop Scheme (continuation)
- Beef Carbon Reduction Scheme Year 1
- Soil Nutrient Health Scheme Zone 3
- Farming for the Generations Pilot Scheme



LAUNCHED IN 2025

- Beef Carbon Reduction Scheme Year 2
- Farming for Sustainability - Knowledge
- Farm Sustainability Transition Payment
- Dairy Carbon Networks
- Suckler Cow Scheme Year 1
- Soil Nutrient Health Scheme Zone 4
- Farming with Nature Transition Scheme Year 1
- Horticulture Pilot Scheme
- Farming for Sustainability - Innovation



COMING IN 2026

- Farm Sustainability Payment Scheme
- Beef Carbon Reduction Scheme Year 3
- Sustainable Farming Investment Scheme
- Suckler Cow Scheme Year 2
- Farming with Nature Transition Scheme Year 2
- Carbon Footprinting Project
- Bovine Genetics Project - data collection
- Farming with Nature Landscapes and Priority Habitats
- Farming for the Generations Full Scheme
- Supply Chain Scheme



MORE SCHEMES TO COME IN 2027 AND BEYOND

subject to business case and legislative cover

Farm Sustainability Payment Scheme



The Farm Sustainability Payment Scheme (FSP) will provide support in a way that helps you run a stronger, more efficient and resilient farm business. The scheme is designed to give you support to build financial resilience while also encouraging management practices that reduce risks and help keep your business sustainable for the long term.

What's changing with the new FSP Scheme?

Several key changes have been introduced from 1 January 2026 to support you in building a stronger, more resilient farm business while protecting the environment.

- **Implementation of the Historic Years Exercise**
This will help better target FSP payments to those who are actively farming the land.
- **The introduction of Conditionalities**
These conditions are being brought in to deliver wider public benefits such as reducing Greenhouse Gas emissions so that farming continues to demonstrate the value achieved for the investment of public money.
- **Progressive capping of payments above £60,000**
FSP is a safety net payment to help you withstand those shocks that are beyond the ability of the business to manage risk effectively. Progressive capping will help discourage unwarranted risk taking and encourage the management of risk within the business.
- **New land eligibility rules**
Allowing rushes, scrub, bracken, heather, bogs and some woodland to be eligible recognises the environmental value of these areas and rewards farm businesses for managing land that benefits nature.
- **New Farm Sustainability Standards**
These updated standards are simpler and more focused on what really matters for the future - helping farmers meet modern requirements while keeping farm businesses productive and sustainable.

What does this mean for you?

To get the Farm Sustainability Payment (FSP) in 2026, here's what you need to do:

- **Apply on time**
You must submit your FSP application by **15 May 2026** and activate **at least 3 entitlements on 3 hectares** of eligible land.
- **Be actively farming**
You must be actively farming on the land you claim on.
 - If you claim **5 hectares or more**, you must be carrying out agricultural activity on **at least 3 hectares**.
 - If you claim **under 5 hectares**, you must be undertaking agricultural activity on **at least 2 hectares**.
- **Have control of the land**
You must have management control of all the land you use to activate entitlements.
- **Meet Historic Years requirement**
If your business was operating before **31 December 2021**, you also need to have met the Historic Years requirements.

Please remember that you cannot lease out all of your entitlements in 2026. You must activate at least 3 entitlements on 3 hectares of eligible land or your FSP claim will be rejected and your entitlements will expire.

What is the Historic Years Exercise?

The purpose of this policy is to help make sure FSP payments go to those who are actively farming the land. It means support is better targeted towards and fairer for active farmers.

To satisfy the Historic Years Exercise, a farm business must have in 2020 or 2021:

- Kept **cattle, sheep, goats** registered on APHIS; or
- Reared **deer** for meat and sold that meat commercially; or
- Kept **poultry** registered with the Department as a commercial flock or pigs registered on APHIS, combined with selling grass (excluding the sale of agistment grazing rights); or
- Farmed at least **three hectares** of arable or horticultural crops listed in Schedule 1 of the Farm Sustainability (Transitional Provisions) Regulations (Northern Ireland) 2025; or
- Been a **contract rearer**, managing livestock and grassland under a formal agreement, bearing the risks and benefiting from the activity.

Farm businesses that do not meet the historic years requirements are not eligible to claim FSP in 2026 only and must transfer their entitlements by sale or gift to an existing farm business by the 15 May 2026. Entitlements not transferred by the 15 May 2026 will expire. Businesses can reapply in 2027 if they obtain new entitlements. **The Historic Years requirement does not apply to farm businesses that were set up after 2021.**



What are the conditionalities for the FSP?

New requirements (called conditionalities) are being brought in gradually to the FSP scheme.

These involve taking part in the **Soil Nutrient Health Scheme (SNHS)** and the **Bovine Genetics Project**. They're being introduced because they can genuinely help improve your farm's productivity, efficiency and long-term sustainability.

- **To meet the SNHS requirement, your farm must register for SNHS and complete the CAFRE training by 15 May 2027.**

If you haven't done this by then, your FSP for 2027 will be reduced by **10%**. If you still haven't met the requirement after that, the reduction will increase to **15%** and stay at that level until you take part. DAERA is looking at ways to help farms that missed the final SNHS registration deadline in September 2025.

- **If you keep cattle, you must register for the Bovine Genetics Project and complete the CAFRE training by 15 May 2028.**

If not, your FSP for 2028 will be reduced by **10%**, increasing to **15%** if you remain non-compliant, and staying at that level until you complete the requirement.

- Participation in the **Carbon Footprinting Project** is also expected to become a requirement in the future.

What is Progressive Capping?

Progressive capping will apply to payments above £60,000 meaning that larger farm payments will be gradually reduced above this threshold.

If your payment is **above £60,000, a percentage reduction** will be applied only to the amount over that limit. Progressive capping will be phased in over 2026 and 2027 with 50% of the final capping deductions introduced in the first year, and full implementation in the second year. See example in Table 1 below.

Table 1 How progressive capping in 2026 and 2027 will be applied to Farm Business A that received FSTP of £75,000 in 2025.

| Progressive Capping Payment Bands | Amount of payment falling into each band | 2026 | | 2027 | |
|-----------------------------------|--|--|---|---|---|
| | | Capping reduction % in first year of FSP | Final Payment (following capping % applied) | Capping reduction percentage in second? year of FSP | Final Payment (following capping % applied) |
| £0-£60,000 | £60,000 | 0% | £60,000 | 0% | £60,000 |
| £60,000.01-£80,000 | £20,000 | 10% | £13,500 | 20% | £12,000 |
| £80,000.01-£100,000 | £20,000 | 20% | £0 | 40% | £0 |
| £100,000.01-£150,000 | £50,000 | 30% | £0 | 60% | £0 |
| £150,000.01-£190,000 | £40,000 | 40% | £0 | 80% | £0 |
| £190,000.01+ | £0 | 100% | £0 | 100% | £0 |
| Total | | | £73,500 | | £72,000 |

The Farm Sustainability Payment due to Farm Business A in 2026 is £73,500 and in 2027 is £72,000.



What are the changes to the land eligibility rules?

We're making some changes to what land can count for the FSP. This is because areas like rushes, scrub, bracken and some types of woodland are important for wildlife and the environment. By allowing these areas to qualify, we're recognising their value and making sure farmers are rewarded for looking after land that benefits nature.

From **1 January 2026**, the rules are being simplified. If your land is already mapped in DAERA's Land Parcel Identification System (LPIS), it will generally be eligible for FSP - except for hard features (like yards, buildings) and some woodland. Soft features such as rushes, scrub, bracken, heather and bogs will now count, as long as the field is mapped in LPIS.

Just like under the old scheme:

- Your field must be at least 0.1 hectares with a clear, permanent boundary;
- The land must be under your control for the whole year (1 January to 31 December); and
- It must be at your disposal on 15 May when you activate entitlements.

What are the new Farm Sustainability Standards?

From **1 January 2026**, seven new **Farm Sustainability Standards (FSS)** replaced the old Cross Compliance rules. Instead of 20 high level requirements, there are now **seven clearer standards**:

- Four standards focus on **protecting the environment**.
- One covers **animal health and welfare**.
- One covers **biosecurity**.
- One covers **traceability**.

These new standards are designed to help you run your farm well, protect your animals

and land, and support good stewardship of the countryside. Most of what's required will be familiar, as many of the rules are already part of existing law or good farming practice.

If your farm doesn't meet the standards, your payment may be reduced using a new **Penalty Matrix**. This system started in January 2026 and is designed to be **fair**, focusing first on helping you meet the standards rather than penalising you. It includes a minimum penalty of a warning letter and mandatory training, and a maximum penalty of full payment loss and exclusion from schemes.

Inspections will continue much the same as before. Each year, a percentage of farms will be selected for checks based on set criteria - just like the previous Cross Compliance system.

SAP Payment Schemes

DAERA provides payments to farmers of c£330m annually to support a **productive, resilient and sustainable** agriculture sector. These payments help farmers:

- **Stay financially stable** during market pressures and rising costs.
- **Adopt environmentally responsible practices** that improve soil, water and biodiversity.
- **Invest in new technology and good practice** that boosts efficiency and long term viability.
- **Manage the transition** toward lower carbon, nature positive farming without undermining farm livelihoods.
- **Remain competitive** in UK and global markets by supporting productivity and environmental performance.

In short, these payments help secure the future of farming and the production of high-quality food, while delivering wider environmental and economic benefits for Northern Ireland.



Beef Sustainability Package

The **Beef Sustainability Package** comprises two elements; a Beef Carbon Reduction Scheme and a Suckler Cow Scheme. Together, they're designed to help beef farmers improve productivity, profitability and to reduce Greenhouse Gas emissions from beef production.

1 The **Beef Carbon Reduction Scheme** started in January 2024. Its main aim is to reward farmers for reducing the age at slaughter of clean beef cattle over a four year period. This helps lower emissions while improving efficiency on farms.

There is evidence that the scheme is working well, including the fact that in its first two years:

- **Over 8,000 farm businesses** have taken part in the Scheme to date;
- **Over £39 million** has been paid out by DAERA to participating farms; and
- The scheme has cut **Greenhouse Gas emissions by 43 kilotonnes of carbon dioxide equivalent** and reduced ammonia emissions by 178 tonnes.

This early success shows that small changes in cattle age at slaughter can improve farm efficiency, profitability and environmental outcomes.

2 The **Suckler Cow Scheme** is the second part of the Beef Sustainability Package. Its goal is straightforward: **to help suckler farmers improve herd performance, boost profitability and cut emissions over time.**

The scheme rewards actions that make suckler herds more efficient - such as **reducing the age at first calving** of suckler heifers and **reducing calving intervals of suckler cows**. These changes help to improve productivity, and lower emissions per animal.

In summary: The Suckler Cow Scheme **pays farmers for good breeding practice** - getting heifers calving earlier, tightening calving intervals, improving herd fertility, and producing more efficient cattle.



Farming with Nature

Farmers are key to reversing declines in biodiversity and it is important that they are rewarded for maintaining and restoring nature. The **Farming with Nature (FwN) Package** will replace the **Environmental Farming Scheme**. Its purpose is to support farmers to farm in a way that helps nature, while still producing high quality food.

The idea behind FwN is to reward farmers for looking after wildlife, water, soils and habitats ensuring that businesses are productive in the long run.

FwN aims to increase and improve habitats on farms, for example, grassland for wildlife, hedges, field margins, wetlands and woodland. It also aims to link these habitats together across the countryside so nature can thrive both inside and outside designated sites.

FwN is being introduced in stages:

Strand 1 - Farming with Nature Transition Scheme is already in place and offered payments for practical actions such as:

- Creating new wildlife areas;
- Putting in green infrastructure;



- Protecting watercourses; and
- Planting or managing features that help store carbon.

Further elements of the FwN Package will open later in 2026.

These will provide support for:

- Additional actions through year 2 of the Farming with Nature Transition Scheme;
- Environmental actions on land that's inside designated sites or other priority areas; and
- Farmers working together across a wider area to deliver greater environmental improvements at landscape scale.

Sustainable Farming Investment Scheme

The **Sustainable Farming Investment Scheme** will help you bring new ideas and modern technology onto your farm. The aim is to make your business more efficient and to improve how your farm looks after the environment.

The scheme will support investment in things like precision equipment that reduces waste and helps cut ammonia, carbon emissions, and nutrient losses. This means you can target inputs better, save money, and improve performance.

Overall, the scheme is designed to make your farm more resilient - helping you deal with changing markets, rising costs, and labour pressures by improving efficiency and reducing risk.



Farming for the Generations Scheme

The **Farming for the Generations Scheme** is designed to help families plan for the future of their farm business. It supports a smooth, well thought out handover of the farm business, including management, decision making and legal inheritance, from one generation to the next.



The scheme has been run as a pilot through Rural Support, to help raise awareness about why succession planning matters. It also has provided farm families with practical help to:

- Plan ahead to enable the next generation to become part of the business;
- Develop the skills of the next generation; and
- Support the current generation as they prepare to hand over responsibilities.

The feedback and learning from this pilot will be used to shape the full Farming for the Generations Scheme when it is rolled out more widely.

Horticulture Pilot Scheme

The **Horticulture Pilot Scheme** has been developed alongside growers in the industry to help the horticulture sector grow in a sustainable way. It focuses on sectors, like **soft fruit, top fruit, vegetables, mushrooms, crops grown under cover, ornamental plants, and cut flowers or foliage**.



The scheme includes three parts:

- **Sustainable Sector Growth Groups** - helping growers work together, share ideas, and plan for the future.
- **Innovation Driver and Support** - offering funding to invest in crops, systems or technologies that are new to Northern Ireland.
- **Growers' Training and Support** - helping new and existing growers build skills and confidence.

Overall, the scheme aims to **increase cooperation among growers**, encourage **innovation**, and **develop growers knowledge and skills**, underpinning a stronger, more resilient horticulture sector.



Supply Chain Schemes

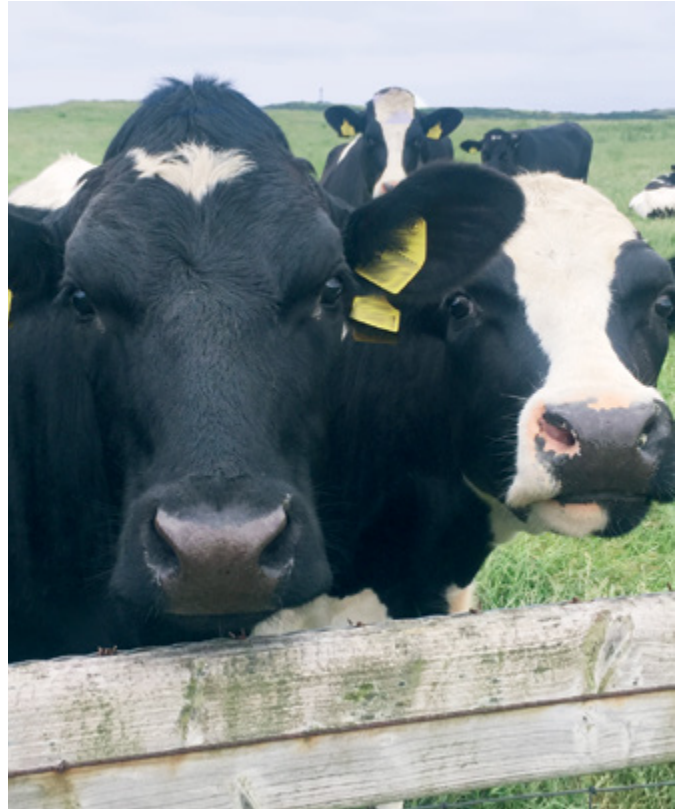
New **Supply Chain Schemes** are being developed to help farmers and growers work better with processors, retailers and others along the supply chain. The idea is that when everyone works together, everyone benefits.

These schemes aim to:

- Help farmers and growers team up, share ideas and solve problems together;
- Encourage innovation and help add extra value to what you produce; and
- Make the whole supply chain - from farm to shop - more profitable, efficient and reliable.

A stronger, more joined up supply chain means:

- Better market stability;
- More focus on safe, high quality food; and
- And improved food security for Northern Ireland.



Pilot Protein Crop Scheme

The **Pilot Protein Crop Scheme** is about encouraging farmers to grow more of our own protein crops here at home. These crops can be used in **animal feed**, helping reduce the need to import protein from abroad.

Growing protein crops also brings **good agronomic benefits** - they fit well into arable rotations and can help improve soil health. For many farmers, they can also provide a **useful extra source of income**.

The scheme first started in **2021** and has now been extended until **2026** so DAERA can fully assess how protein crops can support **better sustainability and environmental gains** on Northern Ireland farms.



SAP Data Platforms

DAERA is investing in data platforms that give farmers clear, practical information to help run their businesses more efficiently.

Data platforms bring together key information about your soils, livestock, emissions and farm performance.

This helps you:

- **Cut costs and improve productivity and profitability** - by targeting inputs and resources where they are needed most.

- **Make better decisions** - clear, reliable data replaces guesswork and supports more confident planning.
- **Build resilience** - spotting issues early and planning to manage and mitigate risks strengthens long term profitability.
- **Support environmental goals** - precise use of nutrients, feed and energy helps reduce emissions and protect soil and water.

Together, these platforms help farmers work smarter, improve performance and meet the environmental and market expectations shaping the future of farming.

Soil Nutrient Health Scheme (SNHS)

The **Soil Nutrient Health Scheme (SNHS)** is a major £45 million programme designed to help farms manage nutrients better and protect water quality for the long term. It has been rolled out across Northern Ireland over the last four years and is now closed for new applications.

By taking part in the Scheme, farmers receive **detailed soil testing and maps** for every field. This gives a clear picture of what your soil actually needs to improve and maintain productivity.

Your farm must register for **SNHS and complete the CAFRE training by 15 May 2027 to avoid the FSP penalty.**

What the SNHS does for your farm

SNHS gives you:

- **Better nutrient planning:** You can see exactly where fertiliser is needed and where it isn't, helping you reduce waste and save money.
- **Improved efficiency:** Knowing your soil health lets you grow better grass and crops, improving productivity and profitability across the farm.



- **Environmental benefits:** Accurate nutrient use helps reduce run off and improves water quality.

Overall, the Scheme gives farmers **solid data** to make better decisions, run a more efficient and profitable business, and meet future support scheme requirements.

If you missed registration

DAERA is currently looking at options to provide soil testing for interested non-registered farms. To register interest email:

SNHS@daera-ni.gov.uk, include your Farm Business ID number and a list of the fields that require soil testing.



Bovine Genetics Project

The **Bovine Genetics Project** is all about helping farmers breed better cattle. By collecting information about the genetics of your animals, the project will allow you to access and understand information on key traits such as, efficiency, fertility and health.

Using an online portal, you'll be able to see clear, easy to use, information on your herd.

This will help you track performance over time and spot opportunities to improve.



How It Helps Your Farm

By improving the rate of genetic gain in dairy and beef cattle, the project aims to boost both environmental and economic performance on farm. In practical terms, this means:

- **Better informed breeding decisions** - You can select animals with stronger genetics, leading to better productivity and overall farm performance.
- **Lower costs and improved efficiency** - Cattle with higher genetic merit grow quicker, convert feed more efficiently and produce fewer Greenhouse Gas emissions per kilo of beef or milk.
- **Improved herd health** - Some genetic traits are linked to better resilience and disease resistance, including traits related to TB, helping to reduce long term health risks.

In short, the Bovine Genetics Project helps you **breed better cattle, run a more efficient herd**, and make decisions based on solid evidence. The end result is improved productivity, profitability and environmental outcomes across your farm business.

Partnership Working

The project is being delivered in partnership between **Sustainable Ruminant Genetics Ltd (SRG)** and **DAERA**, bringing together industry expertise and government support to deliver long term genetic improvement for the sector.

What About Sheep?

DAERA is currently working with SRG and key industry stakeholders to explore the best and most practical way to support sheep farmers. This includes looking at how a programme could be designed to suit sheep enterprises and deliver real, on farm benefits - just as the Bovine Genetics Project will do for cattle.



Farming for Carbon

Within SAP, **Farming for Carbon** brings together actions under a single banner to support the sector to farm productively and efficiently, while reducing Greenhouse Gas emissions and lowering carbon footprints.

Many of the measures that reduce a farm's carbon footprint - better nutrient planning, improved grass utilisation, healthier livestock, and well managed soils - also cut waste and help reduce input costs. This is why the Department is investing in schemes that align environmental improvement with productivity.

Practical actions include:

- Support to the Beef Sector through the Beef Sustainability Package.
- Encouraging the breeding of more productive and environmentally efficient cattle through the Bovine Genetics Project.
- Peer to Peer learning and focused training courses to help farm businesses lower emissions.

- Roll out of the Farming with Nature Package to support the establishment of new hedgerows and trees.
- Interventions in livestock diets, for example, the use of methane suppressing feed products and reductions in nitrogen and phosphorus outputs by collaborative industry research through the AFBI led, Dairy Carbon Network project.

Further actions under development which will help the sector reduce emissions include:

- The Sustainable Farming Investment Scheme
- The Carbon Footprinting Project (see below for details)

With a greater emphasis being placed on emissions reductions along the supply chain, farm businesses taking early action are better positioned to meet market demands and to access new potential opportunities.

Carbon Footprinting Project

A farm **Carbon Footprinting Project** is being developed with industry to provide a whole farm carbon footprint to all farm businesses in Northern Ireland. A Carbon Footprint will provide your farm's "carbon score" - similar to doing a financial audit, but for greenhouse gases.

This **practical information** will help you by:

- **Showing where emissions are coming from on your farm.**
- **Identifying simple steps to cut emissions**, which often saves money at the same time - for example through better feed efficiency or improved grassland management.
- **Demonstrating to processors and buyers that your farm is improving its environmental performance**, which is becoming more important in the market.

In summary, the Carbon Footprinting Project will tell you **where your farm business can be more efficient, save money, and reduce emissions**, helping you stay competitive as the industry changes.



SAP Information and Knowledge Schemes

DAERA invests in information and knowledge schemes to give farmers clear, reliable and accessible guidance that supports better decisions on farm. These help translate complex science, data and policy into practical tools farmers can use every day. By providing trusted information, DAERA helps farmers improve productivity, meet environmental standards, reduce risk, and plan for the long term.

In short, strong information and knowledge schemes ensure farm businesses have the right information at the right time, supporting a more resilient, competitive and sustainable agriculture sector.

Farming for Sustainability - Knowledge & Innovation

These schemes are here to help you grow a stronger, more productive and environmentally friendly farm business.

Run by CAFRE, these knowledge schemes give farmers access to useful information, training and opportunities to learn from other farmers.

Through workshops, events and peer to peer learning groups, you'll get support to:

- Boost productivity and efficiency;
- Improve your farm's environmental performance; and
- Build resilience for the future.

The new Innovation Scheme will also help identify smart, sustainable technologies and practices and support farmers to put them into practice on their own farms - making it easier to try out new approaches that could save time, reduce costs or cut emissions.

Overall, these schemes give you the knowledge, skills and confidence to farm more sustainably while keeping your business strong.



Find out more

To learn more about the SAP and how it can support your farm business, visit the DAERA website at:

www.daera-ni.gov.uk/topics/sustainable-agriculture-programme

Or simply scan the **QR code** to keep up to date with the latest SAP news.

You'll be able to see the SAP timeline, read a handy Questions & Answers guide, and find out more about all the schemes and support available to your farm.



Future editions of the Newsletter will be issued digitally in line with the NICS Digital Strategy.