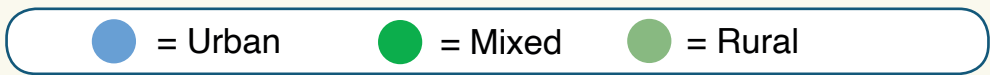
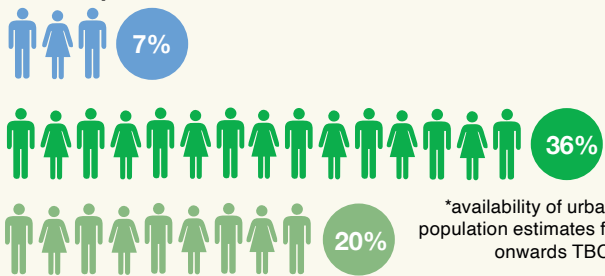


# Northern Ireland Urban-Rural Statistics



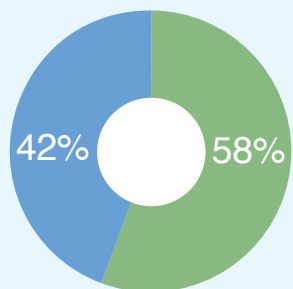
## Population Growth, 2001-2020\*



## Job Quality 2024



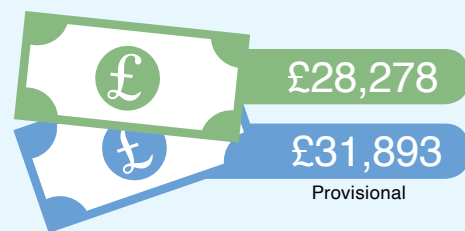
## Businesses 2025



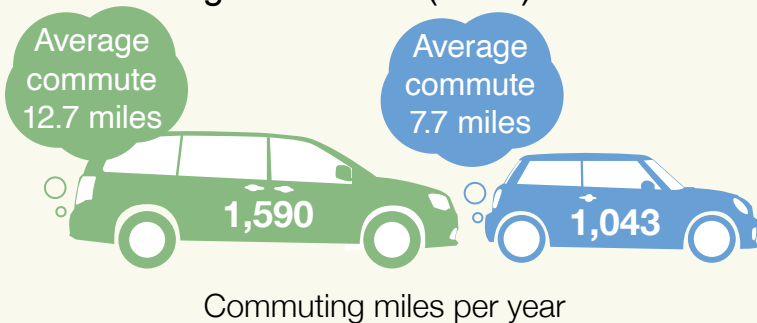
## Tourism Expenditure 2024



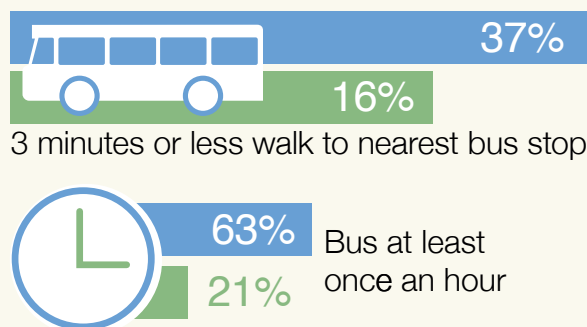
## Median Annual Salary 2025\*



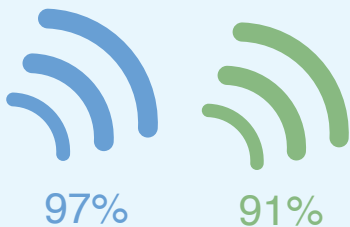
## Average Commute (miles) 2023



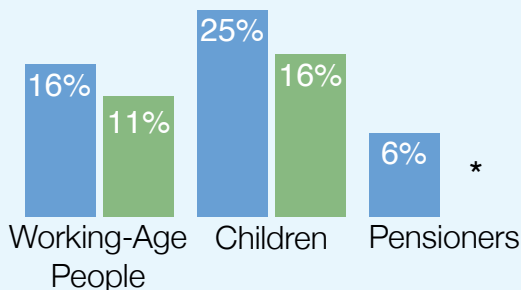
## Public Transport 2023



## Coverage of Full-Fibre Broadband 2025

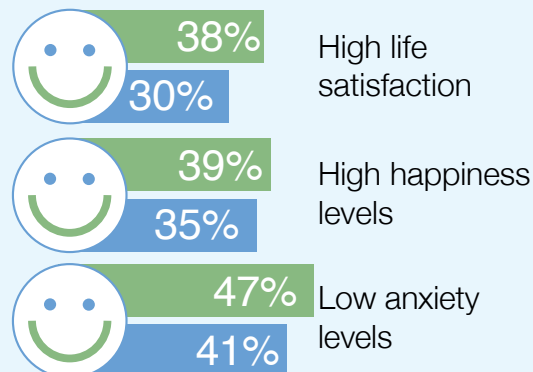


## People in Absolute Poverty (after Housing Costs) 2023-24



\*Figure unavailable due to small sample size.

## Wellbeing 2024-25\*



\*Self reported

