

# Seabed survey for Skiffiefest

**Reason for survey:** Requested by Down Coastal Rowing Association (DCRA) to evaluate the environmental impact that placing temporary buoys in the area may have had.

**Date:** 31<sup>st</sup> July 2025

**Location:** A sweep (20m wide) was performed travelling along two lines. The first line (start line) was between the coordinates 54.37703,-5.66949 and 54.37492,-5.66778. The second line (turn line) was between the coordinates 54.38087,-5.65558 and 54.37886,-5.65386 as supplied by DCRA.

**Method:** Underwater survey using SCUBA divers.

## **Main findings:**

The same observations as the pre event survey were noted and are detailed below. Additionally, no outstanding marks or features could be identified within the area leading to the conclusion that no lasting impact was caused by the placement of temporary buoys during the event.

Seabed mostly flat and made up of a fine mud with diatom film.

Several burrows present (probably Norway lobster *Nephrops nephrops*) but no live animals observed within survey area to confirm species and their active presence in area.

Gobies (*Pomatoschistus* spp.) frequent; Harbour crab (*Polybius depurator*), Common starfish (*Asterias rubens*), occasional; Brown crab (*Cancer pagurus*), Common hermit crab (*Pagurus bernhardus*), Common whelk (*Buccinum undatum*), Spiny starfish (*Marthasterias glacialis*), Common urchin (*Echninus esculentus*), rare.

One small area of boulders dominated by Plumose anemones (*Metridium senile*), only one boulder was occupied by sparse hydroids.

| Start/Finish Line Coordinates |          |           |           |          | Biotope at location | Relevant Photos to Show Biotope |
|-------------------------------|----------|-----------|-----------|----------|---------------------|---------------------------------|
| Buoy No.                      | Latitude | Longitude | OSNI Grid |          |                     |                                 |
|                               |          |           | Easting   | Northing |                     |                                 |
| 1                             | 54.37703 | -5.66949  | 351481.4  | 350101.2 | SS.SSa              | A                               |
| 2                             | 54.37686 | -5.66936  | 351490.5  | 350083.4 | SS.SSa              | A                               |
| 3                             | 54.3767  | -5.66922  | 351499.7  | 350065.7 | SS.SSa              | A                               |
| 4                             | 54.37654 | -5.66909  | 351508.8  | 350047.9 | SS.SSa              | A                               |
| 5                             | 54.37638 | -5.66896  | 351518.0  | 350030.1 | SS.SSa              | A                               |
| 6                             | 54.37622 | -5.66883  | 351527.1  | 350012.3 | SS.SSa              | A                               |
| 7                             | 54.37605 | -5.6687   | 351536.3  | 349994.5 | SS.SSa              | A                               |
| 8                             | 54.37589 | -5.66857  | 351545.4  | 349976.7 | SS.SSa              | A                               |
| 9                             | 54.37573 | -5.66843  | 351554.5  | 349958.9 | SS.SSa              | A                               |
| 10                            | 54.37557 | -5.6683   | 351563.7  | 349941.1 | SS.SSa              | A                               |
| 11                            | 54.3754  | -5.66817  | 351572.8  | 349923.4 | SS.SSa; IR.LIR      | A, B                            |
| 12                            | 54.37524 | -5.66804  | 351582.0  | 349905.6 | SS.SSa              | A                               |
| 13                            | 54.37508 | -5.66791  | 351591.1  | 349887.8 | SS.SSa              | A                               |
| 14                            | 54.37492 | -5.66778  | 351600.3  | 349869.9 | SS.SSa              | A                               |

|          | Turn Line Coordinates |           |           |          | Biotope at location | Relevant photos to show biotope |
|----------|-----------------------|-----------|-----------|----------|---------------------|---------------------------------|
|          |                       |           | OSNI Grid |          |                     |                                 |
| Buoy No. | Latitude              | Longitude | Easting   | Northing |                     |                                 |
| 1        | 54.38087              | -5.65558  | 352370.9  | 350558.7 | SS.SSa              | A                               |
| 2        | 54.38071              | -5.65544  | 352380.1  | 350540.9 | SS.SSa              | A                               |
| 3        | 54.38054              | -5.65531  | 352389.2  | 350523.1 | SS.SSa              | A                               |
| 4        | 54.38038              | -5.65518  | 352398.4  | 350505.3 | SS.SSa              | A                               |
| 5        | 54.38022              | -5.65505  | 352407.5  | 350487.5 | SS.SSa              | A                               |
| 6        | 54.38006              | -5.65492  | 352416.7  | 350469.8 | SS.SSa              | A                               |
| 7        | 54.37989              | -5.65479  | 352425.8  | 350452.0 | SS.SSa              | A                               |
| 8        | 54.37973              | -5.65465  | 352435.0  | 350434.2 | SS.SSa              | A                               |
| 9        | 54.37957              | -5.65452  | 352444.1  | 350416.4 | SS.SSa              | A                               |
| 10       | 54.37941              | -5.65439  | 352453.3  | 350398.6 | SS.SSa; IR.LIR      | A, C                            |
| 11       | 54.37924              | -5.65426  | 352462.4  | 350380.8 | SS.SSa              | A                               |
| 12       | 54.37908              | -5.65413  | 352471.6  | 350363.0 | SS.SSa              | A                               |
| 13       | 54.37892              | -5.654    | 352480.7  | 350345.2 | SS.SSa              | A                               |
| 14       | 54.37886              | -5.65386  | 352489.8  | 350327.4 | SS.SSa              | A                               |

**Conclusion:** No evidence to suggest that the placing of temporary buoys has had a negative impact on the seabed. No species were observed to have been adversely affected by this activity. No Northern Ireland Priority Species observed.

Pre Event Dive – [REDACTED]

Post Event Dive- [REDACTED]

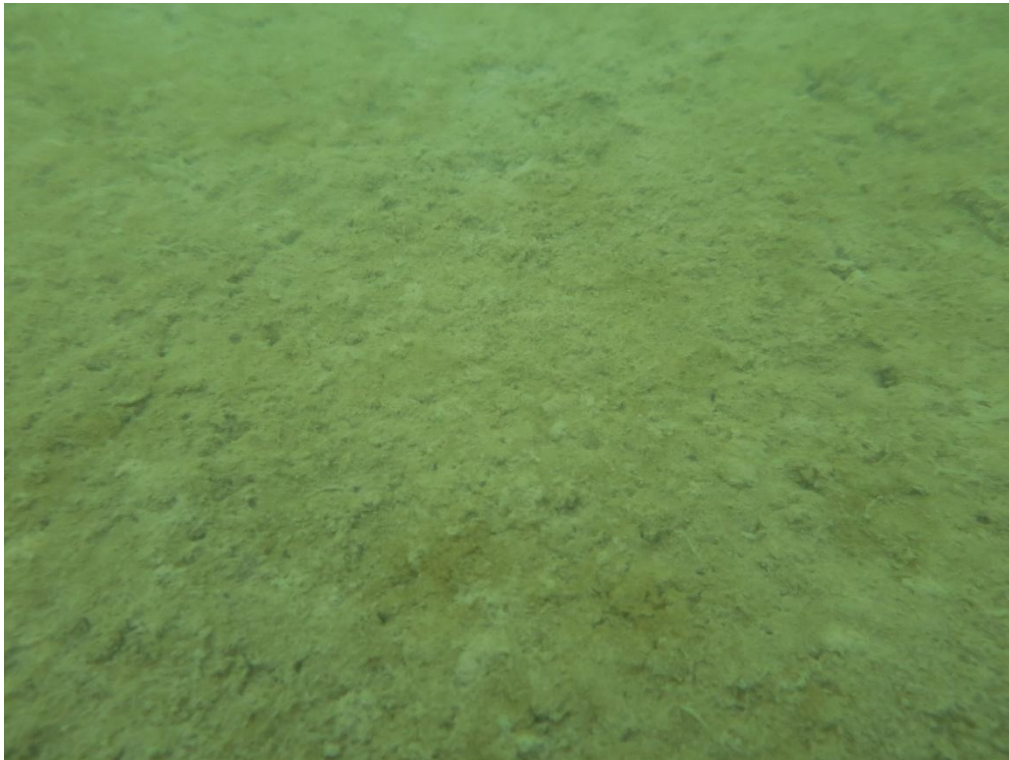
## Appendix A

A.1 – Photograph prior to event

Photo showing the Sublittoral sands and muddy sands (SS.SSa) biotope found across all buoys



A.2 – After Event Photograph



## Appendix B

### B.1 – Pre Event Photograph

Photo showing boulder field, Low energy infralittoral rock (IR.LIR) with *Asterias rubens* and *Metridium senile* found approx. at buoy location 11.



### B.2 – Post event photograph





## Appendix C

C.3 – Pre Event Photograph

Photograph showing biotope Low energy infralittoral rock (IR.LIR) with *Metridium senile* at approx. buoy location 10.



C.2 – After Event Photograph

