

Brompton – Bathing Water Profile

Brompton Bay, Bangor, County Down, Northern Ireland

Bathing Water Profiles are designed to help the public make an informed choice before bathing, providing detailed information on the physical characteristics of each bathing water as well as assessing the pollution risk to each site. They are a requirement of The Quality of Bathing Water Regulations (Northern Ireland) 2008 and are reviewed in line with these regulations.



Historical and Current bathing water compliance classifications for Brompton can be found at – [Bathing Water Compliance](#)

There is general advice not to bathe during or up to 48hrs after heavy or prolonged rainfall.

Description

Brompton bathing water is located in a small cove, 1km along the North Down Coastal path, east of Bangor City. The bathing water is approximately 60m in length and comprised of a sandy bay enclosed within a rocky shoreline. It is backed by the North Down Coastal Path and lies in a highly residential area. A golf course is situated to the west of the bathing area, and Bangor City, with all its amenities and facilities, is to the east of the bathing water.

Site Details Local council area – Ards and North Down Borough Council

Year of designation – 2025

Water sampling location – Lat 54.66792, Long -5.68414

Potential Pollution and measures to reduce impact on site:

The potential sources of pollution have been split into three categories; wastewater (sewage) treatment works discharges, wastewater systems in urban areas and rural source pollution, including agriculture. DAERA Marine and Fisheries Division work with the Northern Ireland Environment Agency (NIEA) and other departments to identify and resolve sources of pollution.

Wastewater (sewage) treatment works discharges.

There are no treated wastewater outfalls and wastewater treatment works located in the immediate vicinity of Brompton bathing water. Wastewater from the wider Bangor area is pumped to a major wastewater treatment facility between Bangor and Donaghadee. It provides secondary treatment with UV disinfection during the bathing season and the treated effluent is discharged some 600m offshore, to the northeast of Brigg's Rocks, approximately 6km northeast of Brompton bathing water.

Wastewater systems in urban areas.

An extensive upgrade to the sewerage system in and around the Bangor area is ongoing and due for completion by the end of 2025/2026. The programme of works has included the construction of a new Wastewater Pumping Station and the upgrading of a number of Combined Sewer Overflows. The urbanisation associated with Bangor is a potential source of pollution especially during and after periods of prolonged/heavy rainfall.

In the event of prolonged/heavy rainfall the wastewater system may become overwhelmed leading to an overflow/discharge of wastewater. **This is why there is general advice not to bathe during or up to 48 hours after prolonged / heavy rainfall.**

The collection and treatment of wastewater has the potential to cause pollution as sewage collection systems are often combined and designed to overflow in periods of extreme wet weather or there may be occasional failures in the treatment system. Near the Brompton area there are a number of combined sewer overflows (CSO) and wastewater pumping stations with associated emergency overflows, highlighted on Map 1.

There is also the potential for misconnections between the sewer system and surface drains, which may allow untreated wastewater to enter the water environment. Misconnections are not obvious, but when these become apparent NIEA pursues them as pollution incidents.

Rural source pollution – agriculture

Although Brompton bathing water is located in a highly urban area, surrounding land cover within the catchment also includes arable farming, horticulture, woodland and some improved grassland. Areas within the catchment where agriculture is the dominant land use may be subject to inputs from chemical fertilisers and organic wastes. Prolonged periods of rainfall can cause surface runoff of these organic wastes, such as animal slurries, contributing to the bacteria content in the water environment.

Other sources of pollution.

- Dogs
- Horses
- Litter
- Fly tipping

Management measures:

The Water Environment (Water Framework Directive) Regulations (Northern Ireland) 2017, take an integrated approach to the protection, improvement and sustainable use of the water environment. River Basin Management Plans (RPMP) are produced which detail all of Northern Ireland's water quality objectives and a programme of measures to achieve these objectives. Within these 'Programme of Measures' in each River Basin Management Plan are a number of measures which relate directly to the protection of bathing waters.

Brompton bathing water is located in the North Eastern River Basin District. You can find more information about the North Eastern River Basin Management Plan below:

[Draft 3rd cycle River Basin Management Plan for Northern Ireland 2021-2027](#)

Within the River Basin Management plans programme of measures there are several schemes to address sources of pollution:

- Nutrients Action Programme (NAP) 2019-2022
- Knowledge Advisory Service (KAS)
- Environmental Farming Scheme (EFS)
- Soil Nutrient Health Scheme (SNHS)

Macro-algae, phytoplankton, and cyanobacteria (blue-green algae)

Brompton bathing water is not at risk of a proliferation of macro-algae, phytoplankton or cyanobacteria (blue-green algae).

What should I do if I see a pollution incident?

If you see a water pollution incident, you should immediately contact NIEA through the **24-hour** Emergency Water Pollution Hotline.

Phone: **0800 807060**

When pollution is reported or is found to be affecting the water quality of a bathing water, an immediate investigation is instigated. All possible sources of pollution are checked and the bathing water is monitored until the effects of the incident have passed. During this time, bathing waters may be temporarily closed (by local authority or controlling body) until the water quality has improved and levels of bacteria are within mandatory standards.

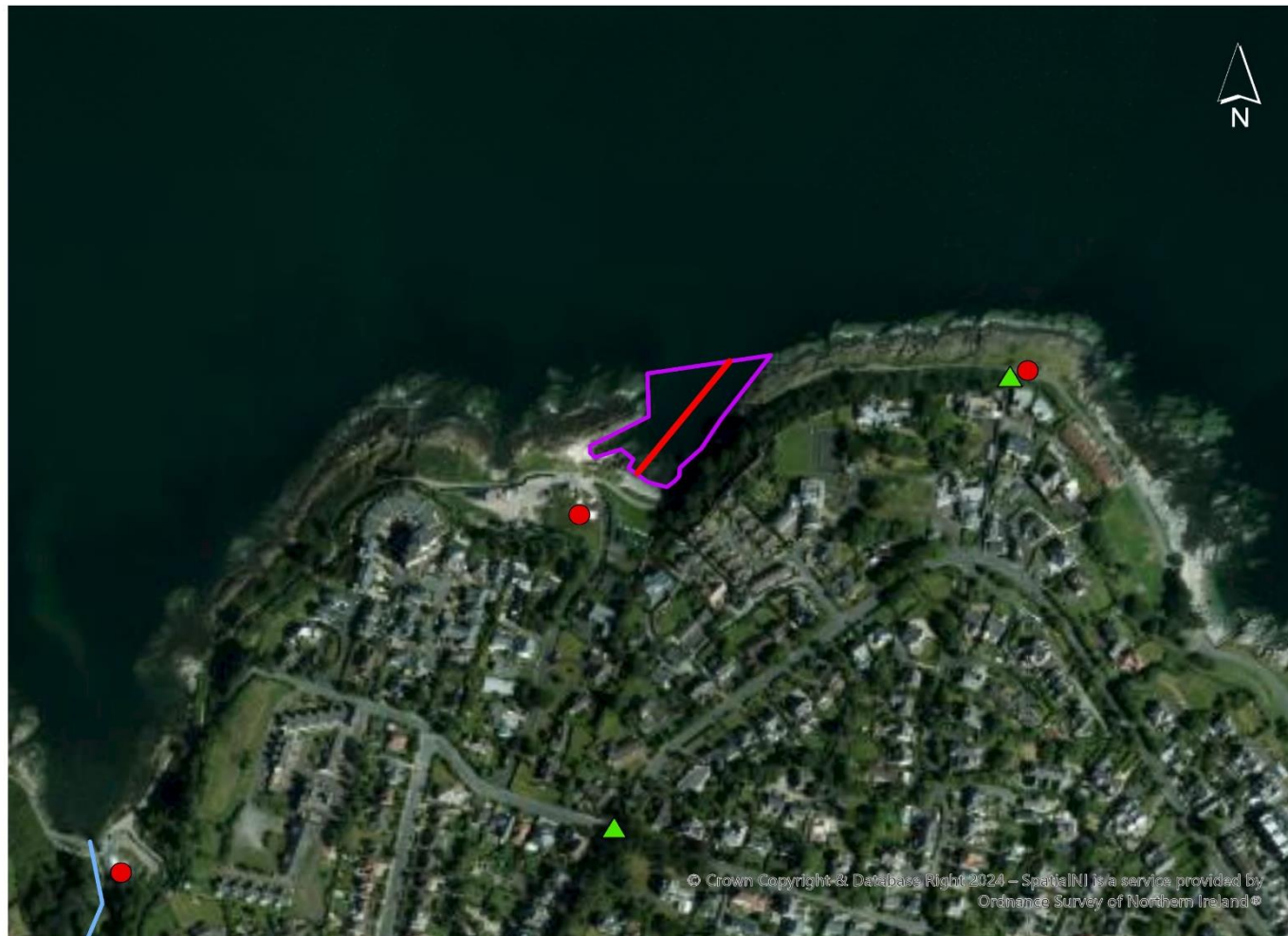
Contact details

For general information about bathing waters:

DAERA Marine and Fisheries Division
17 Antrim Road, Tonagh, Lisburn, BT28 3AL
Email: Marine.InfoRequests@daera-ni.gov.uk
Website: [DAERA Bathing Water Quality](#)

Local Authority Ards and North Down Borough Council
Address: City Hall, The Castle, Bangor, BT20 4BT
Email: enquiries@ardsandnorthdown.gov.uk
Phone: 0300 013 3333
Website: [Ards and North Down Borough Council](#)

Map 1 Brompton Bathing Water



- ### Legend
- Wastewater Pumping Station
 - ▲ Combined Sewer Overflow
 - Brompton bathing water area
 - Bathing Water Sampling Transect
 - Rivers

1:8,000

