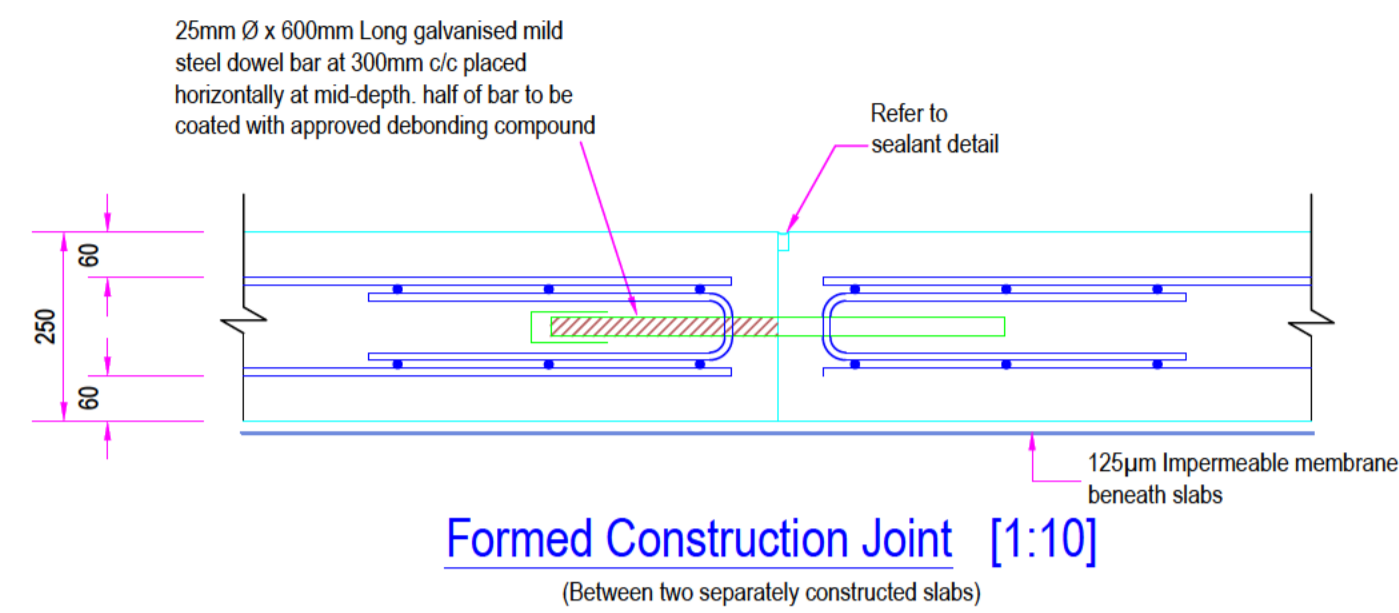
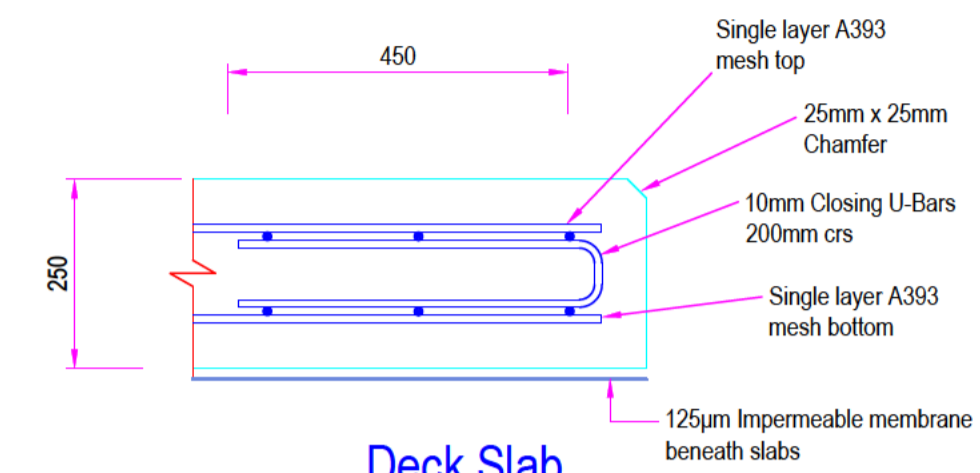


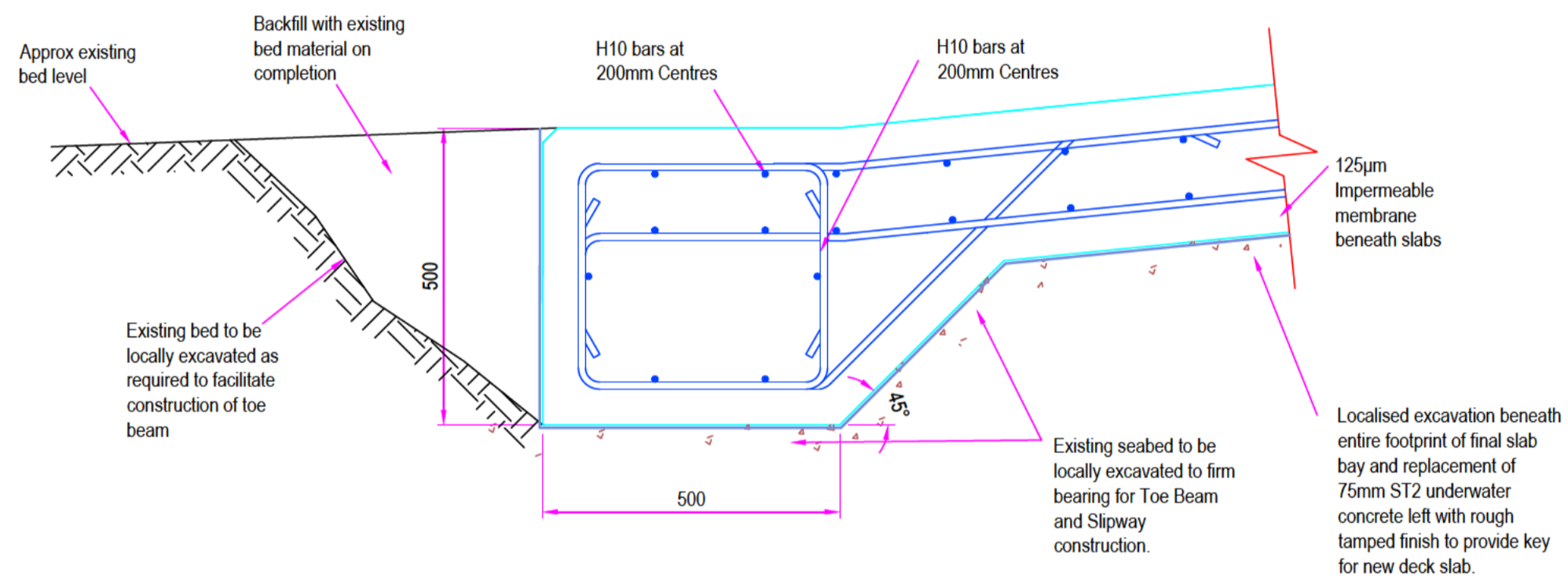
Typical Slipway Construction Detail [1:10]



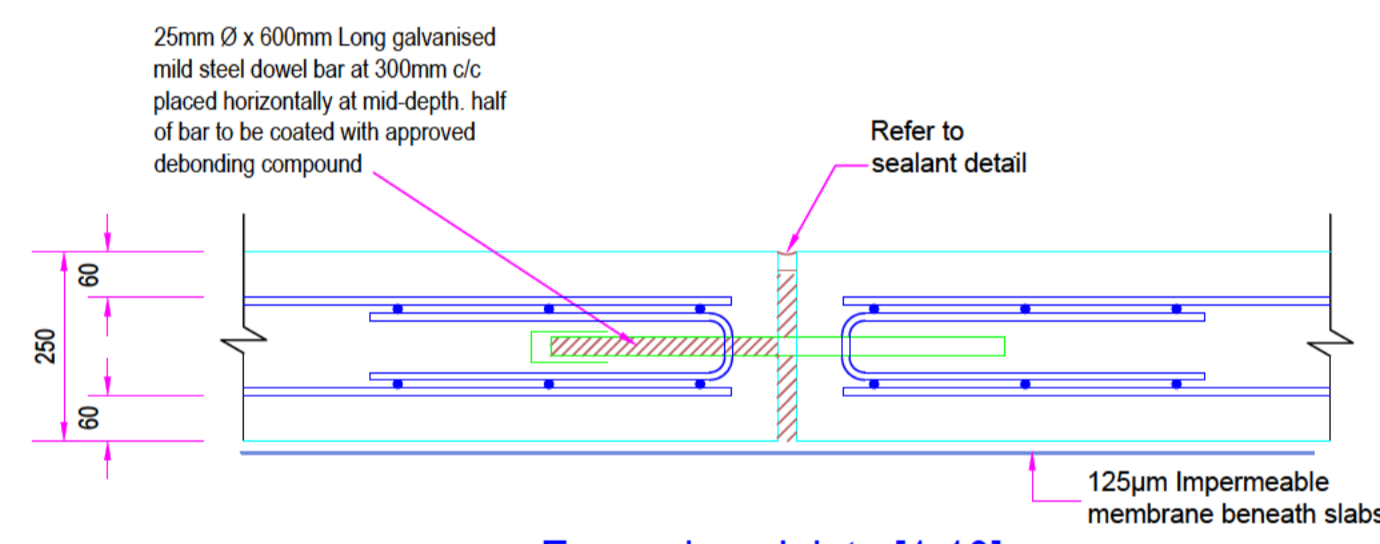
Formed Construction Joint [1:10]
(Between two separately constructed slabs)



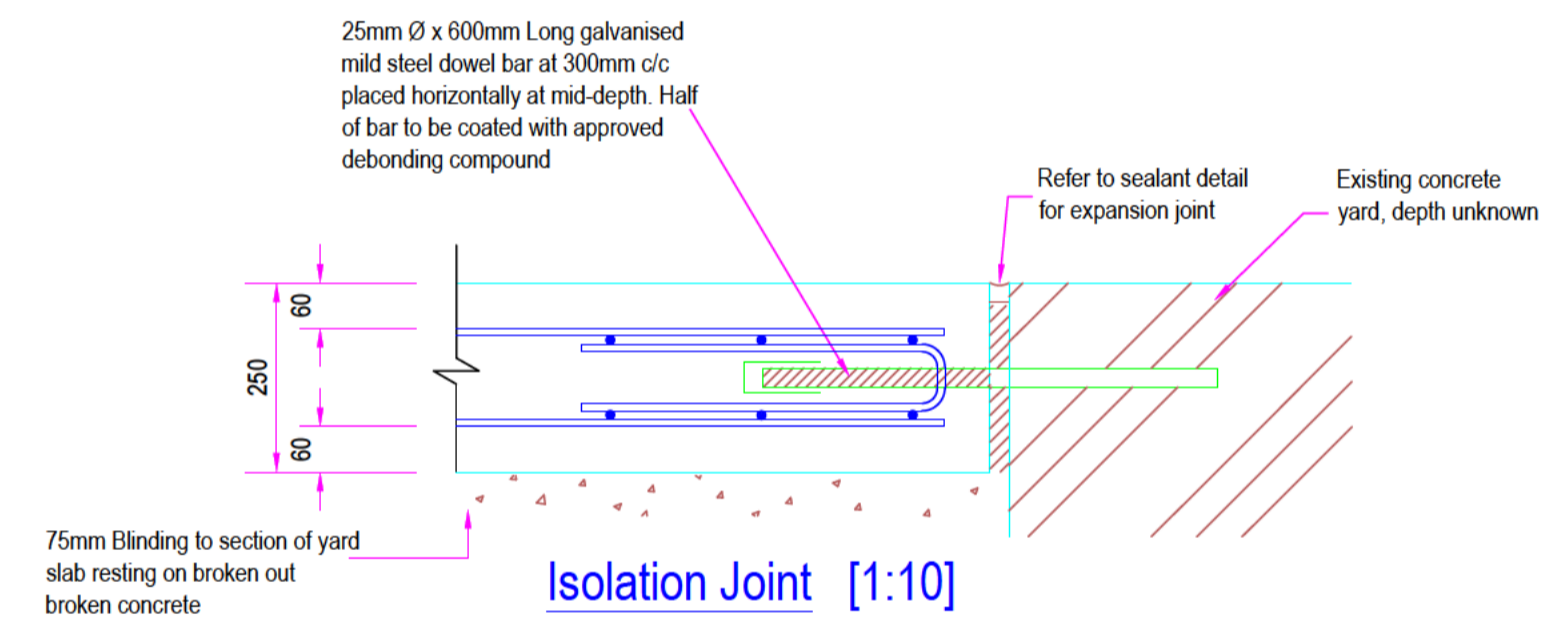
Deck Slab Reinforcement Edge Detail [1:10]



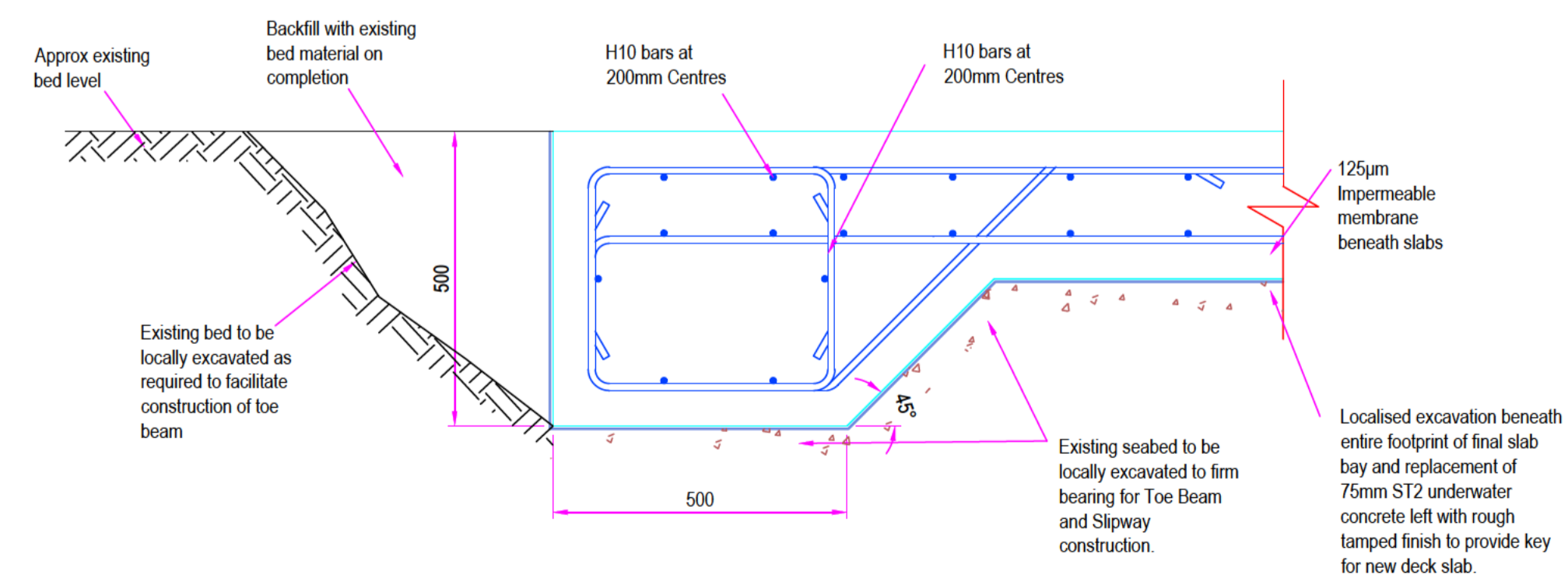
Toe Beam Detail [1:10]



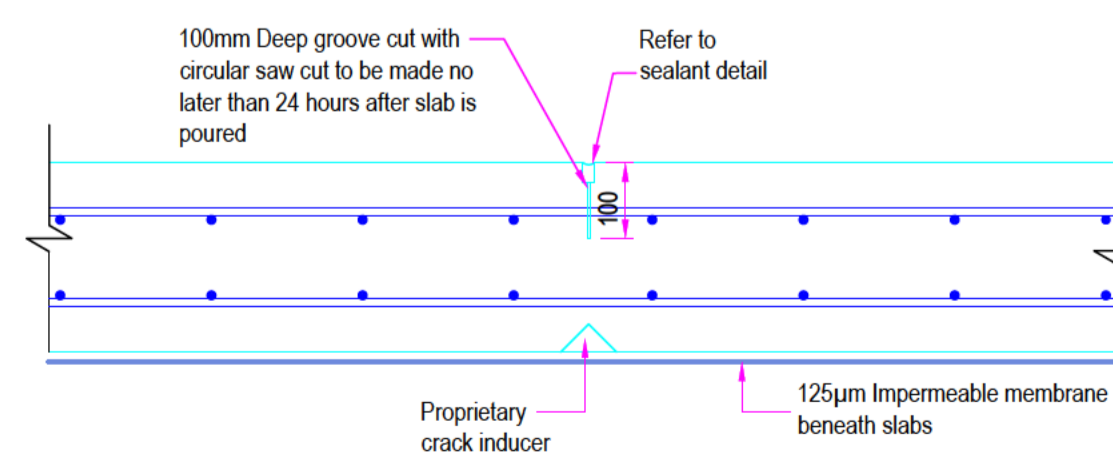
Expansion Joint [1:10]



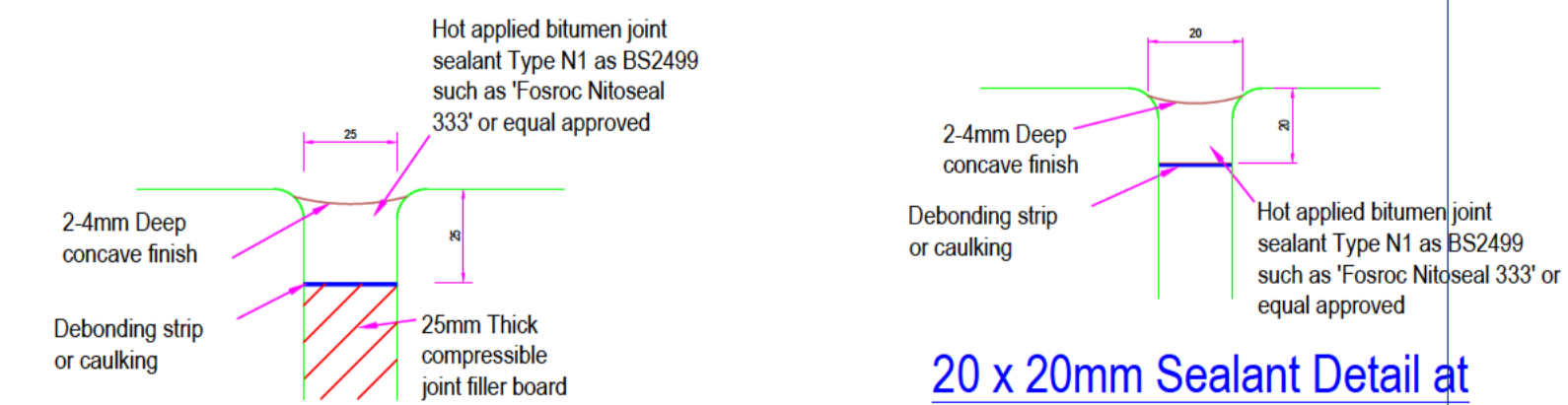
Isolation Joint [1:10]



Edge Beam Detail [1:10]



Transverse Saw Cut Contraction Joint [1:10]



25x25mm Sealant Detail at Slab Expansion Joint [1:2]



20 x 20mm Sealant Detail at Slab Construction and Contraction Joints [1:2]

- Verifying Dimensions.
The contractor shall verify dimensions against such other drawings or site conditions as pertain to this part of the work.
- Existing Services.
Any information concerning the location of existing services indicated on this drawing is intended for general guidance only. It shall be the responsibility of the contractor to determine and verify the exact horizontal and vertical alignment of all cables, pipes, etc. (both underground and overhead) before work commences.
- Issue of Drawings.
Hard copies, dwf and pdf will form a controlled issue of the drawing. All other formats (dwg, dxf etc.) are deemed to be an uncontrolled issue and any work carried out based on these files is at the recipient's own risk. RPS will not accept any responsibility for any errors arising from the use of these files, either by human error by the recipient, listing of un-dimensioned measurements, compatibility issues with the recipient's software, and any errors arising when these files are used to aid the recipient's drawing production, or setting out on site.
- Datum. Ordnance Datum
- Concrete Additive.
Concrete placed beneath mid lids to contain a hardener additive. Concrete placed beneath MLWS to contain an anti-washout additive.

6.	CONCRETE	MIX TYPE	COVER	FINISH
	IN-SITU	C32 40	60mm Top & Btm	TAMPED

C02	Issued for Marine License Application	P.M.	09/04/2026
C01	Issued for DAERA PAD	P.M.	08/07/2025
rev	amendments	check	date

TETRA TECH
A TETRA TECH COMPANY

Elmwood House
74 Boucher Road
Belfast
BT12 6RZ

T +44 (0) 28 90 667914
F +44 (0) 28 90 668296
W www.rpsgroup.com/ireland
E ireland@rps.tetrattech.com

Client
Ards and North Down Borough Council

Project
Ballyholme Yacht Club

Title
Typical Slipway Construction Details

Project Number	Sheet Size	Drawing Scale
00884	A1	Varies

Drawing Number
PO0884-RPS-ML-ZZ-DR-C-0221

Drawn By	Status	Revision
	A1	C02

Checked By: Approved By: Date: