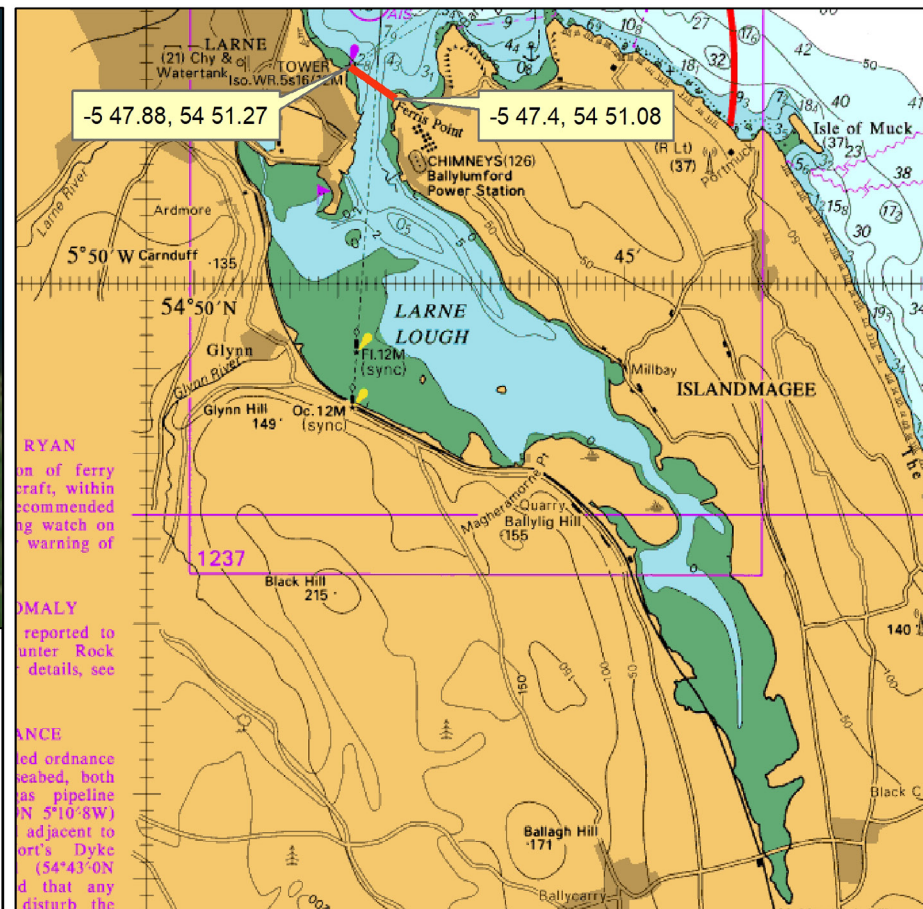


Northern Ireland Marine Disease Control Compartments - Larne Lough as of 10 Dec 2019



Disease Status

Marteilia Refringens	Negative
Bonamia Ostreae	Negative
Oyster Herpes Virus (OsHV-1)	Positive
Perkinsus Marinus	Negative
Mycrocytos Mackini	Negative
Bonamia Exitiosa	Negative
Taura Syndrome	Negative
Yellow Head Disease	Negative
White Spot Disease(WSS)	Negative



Co ordinates in degrees decimal minutes
Datum WGS84

Physical description

That part of Larne Lough bounded by the high-water mark and to the south west of an imaginary line drawn from Chain Tower to Ferris Point in County Antrim.

(In the event of any discrepancy between the descriptive position and the chart, the descriptive position shall prevail)



Department of
**Agriculture, Environment
and Rural Affairs**

www.daera-ni.gov.uk

A living, working, active landscape valued by everyone.