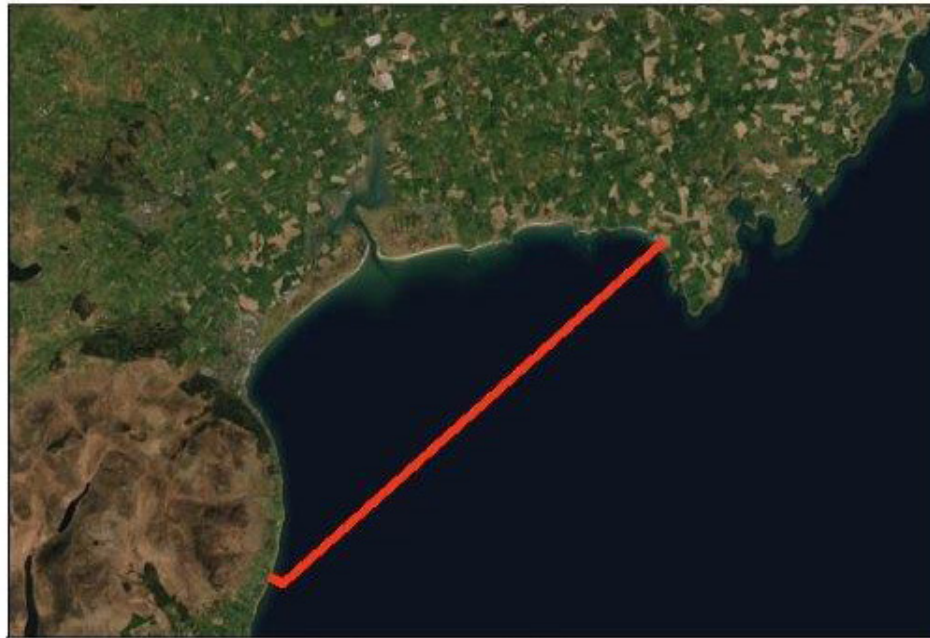


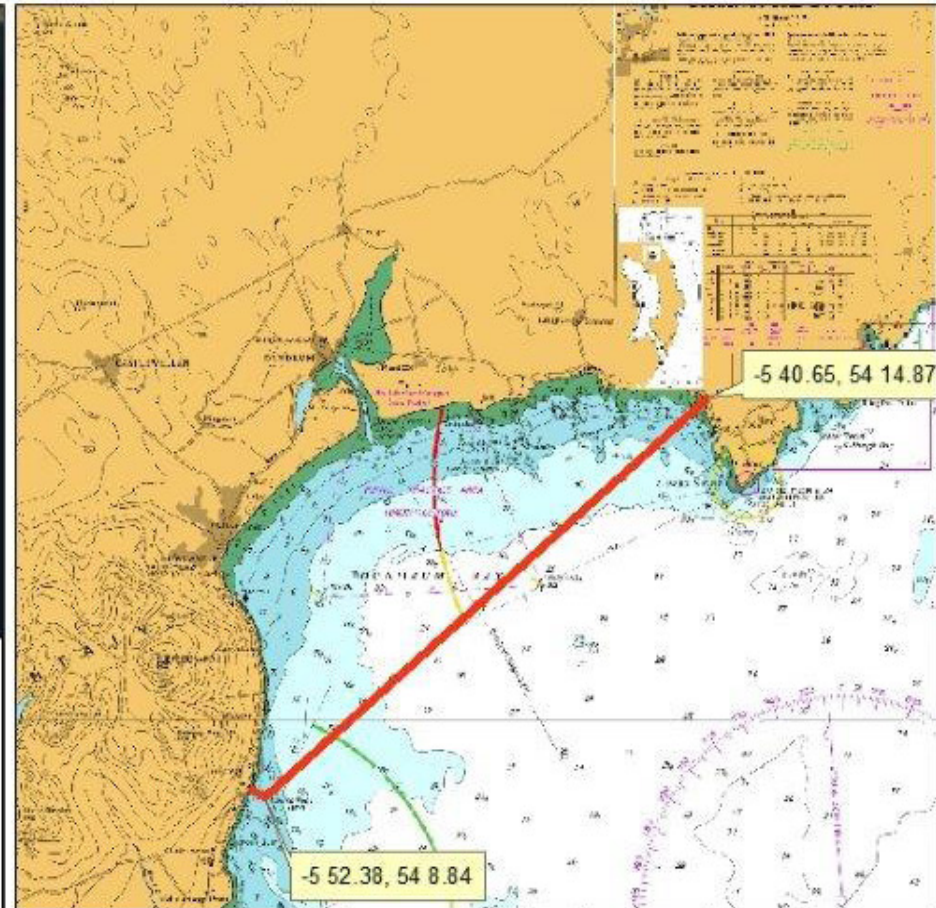
# Northern Ireland Marine Disease Control Compartments - Dundrum Bay as of 10 Dec 2019



## Disease Status

Marteilia Refringens	Positive
Bonamia Ostreae	Negative
Oyster Herpes Virus (OsHV-1)	Positive
Perkinsus Marinus	Negative
Mycrocytos Mackini	Negative
Bonamia Exitiosa	Negative
Taura Syndrome	Negative
Yellow Head Disease	Negative
White Spot Disease (WSS)	Negative

The disease status of this compartment is currently in accordance with COUNCIL DIRECTIVE 2006/88/EC and the OIE Manual. In the event of infection or eradication the status will change and notice will be disseminated accordingly.



Co ordinates in degrees decimal minutes  
Datum WGS84

## Physical description

Dundrum Bay bounded by the high-water mark and enclosed by the sea area to the landward side of an imaginary straight line drawn from the Chapel (near Minerstown, County Down) at Rossglass Bay to Roaring Rock (and thence to the nearest point of mainland).  
(In the event of any discrepancy between the descriptive position and the chart, the descriptive position shall prevail)



Department of  
**Agriculture, Environment  
and Rural Affairs**

[www.daera-ni.gov.uk](http://www.daera-ni.gov.uk)

*A living, working, active landscape valued by everyone.*