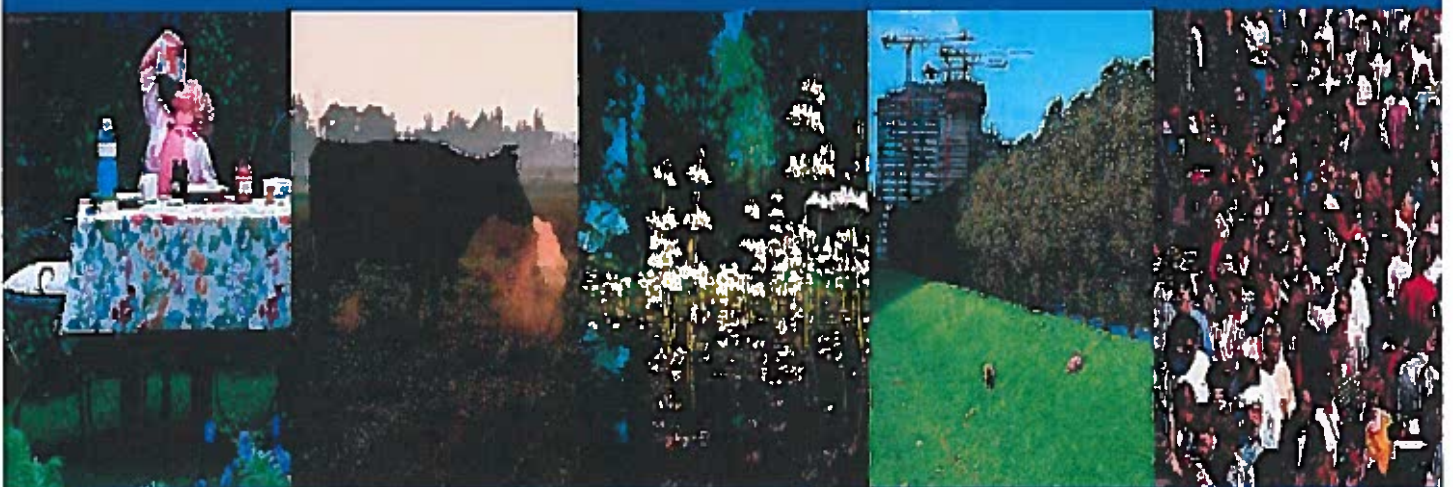


# When disadvantage changes in a comparative advantage: the case of less favoured areas

Herbert Diemont,

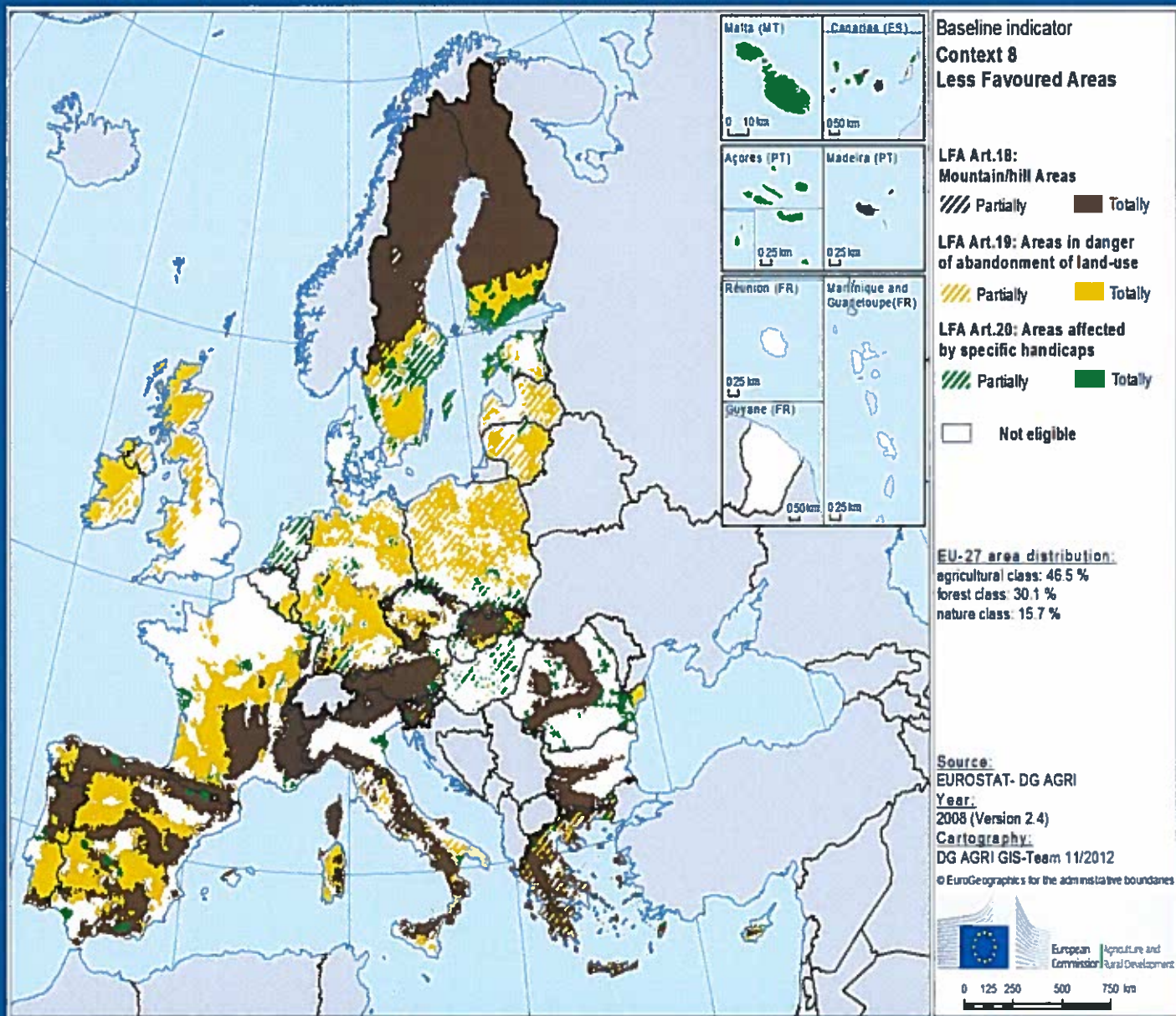
CNCC, NI Environmental Agency ,Belfast 28 October 2016



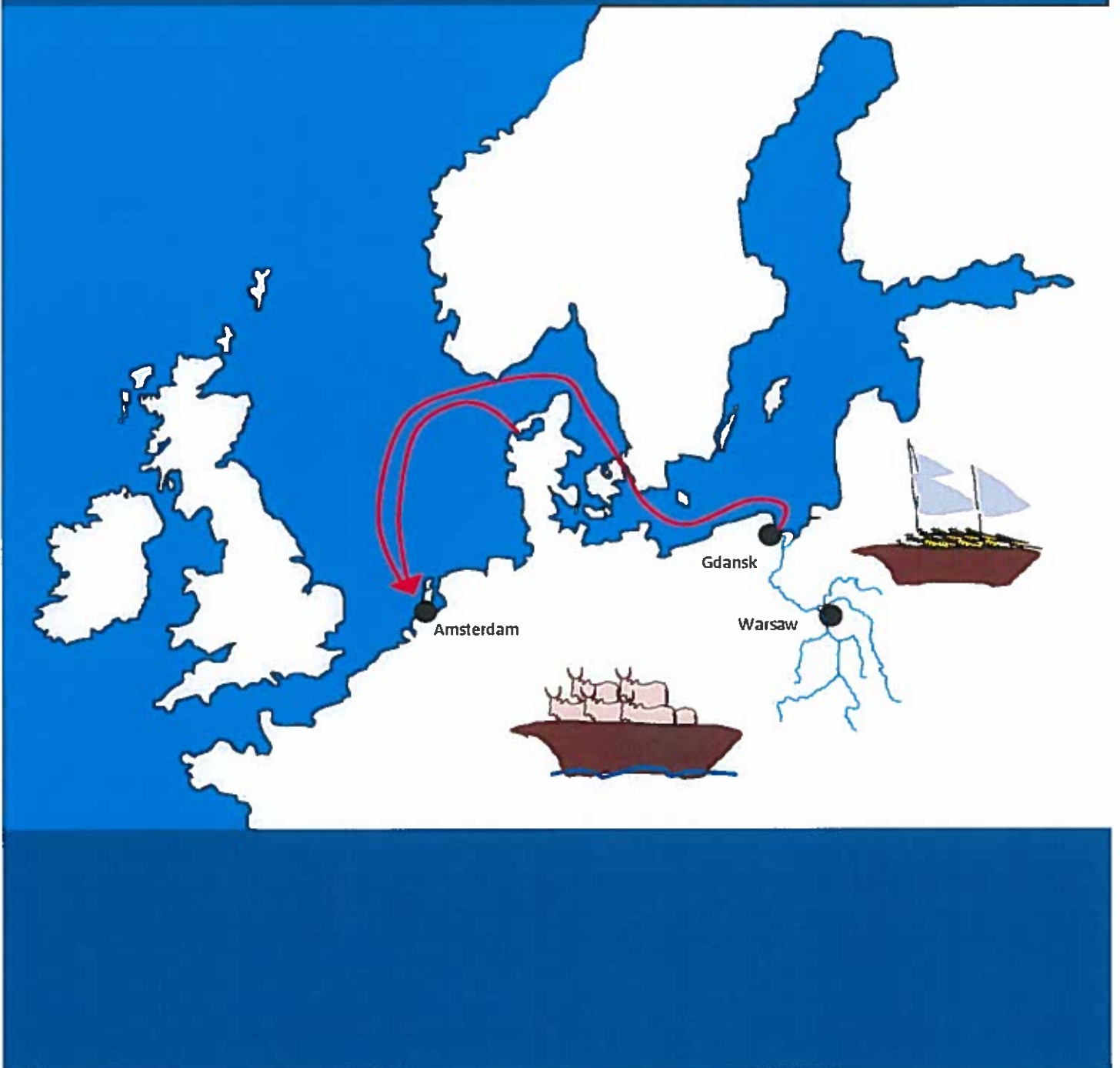
- Comparative advantages are the driving factor of trading from global to local level



# Less Favoured Areas



# Early globalisation 17th century



ALTEERRA

WAGENINGEN UR

**Legend**

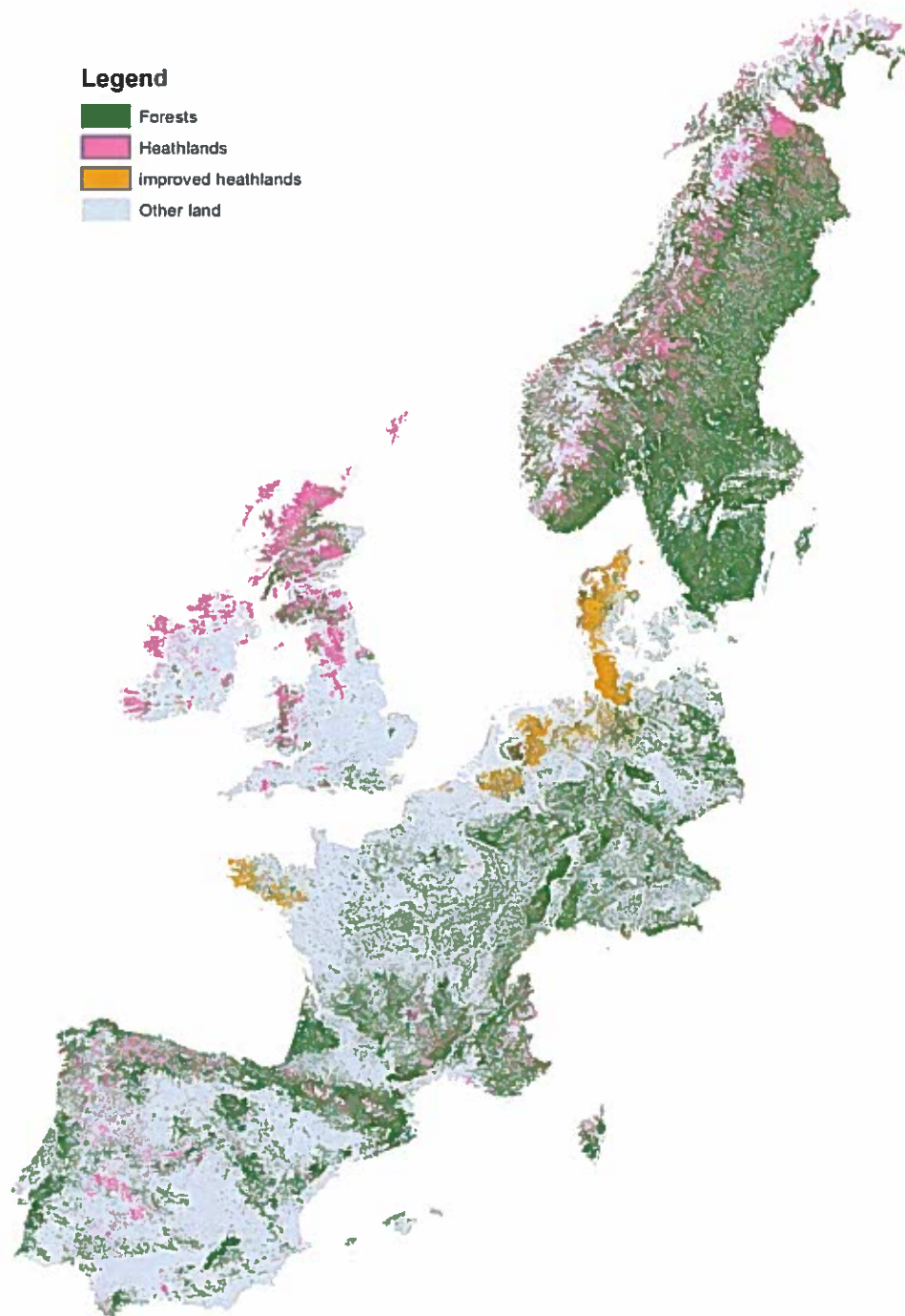
- Heathland
- Other land



ALTERRA

WAGENINGENUR

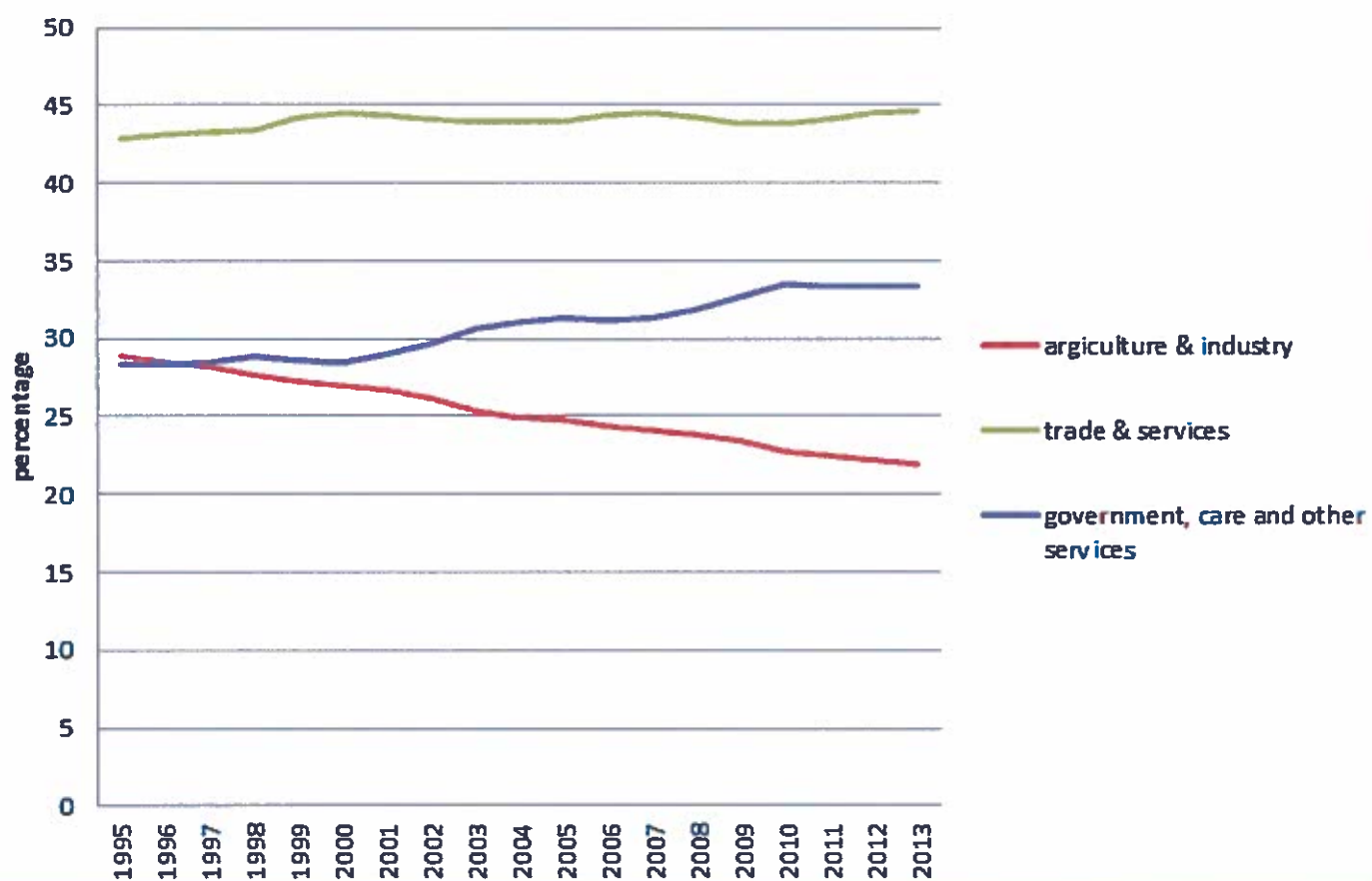
# •Side effect: Intensification caused a decline of farm land



ALTERRA

WAGENINGEN UR

## Job development Netherlands



ALTEERRA

WAGENINGEN UR



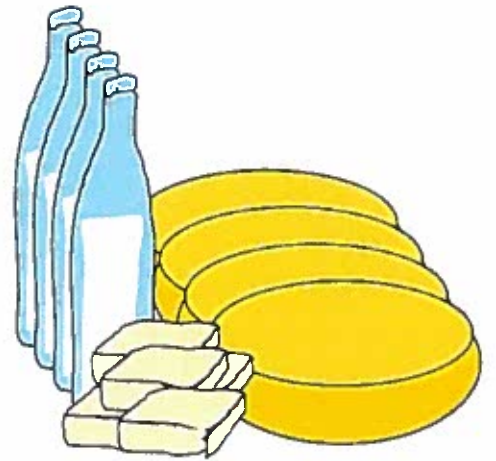
What is the percentage of the world food production which is traded via the world market?



ALTERRA

WAGENINGENUR





allowing Netherlands become an agricultural exporting country!



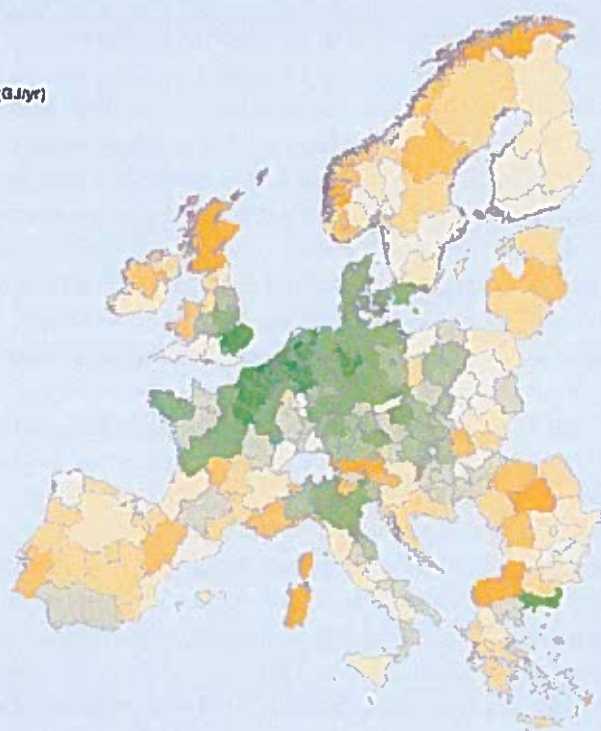
ALTERRA

WAGENINGENUR

**Legend**

Consumable energy per ha UAA (G.J/yr)

- 3 - 6
- 7 - 9
- 10 - 12
- 13 - 15
- 16 - 19
- 20 - 24
- 25 - 30
- 31 - 42
- 43 - 60
- 61 - 88



**FIG. 3.1** The main food producing areas, expressed as consumable energy per ha, are in the densely populated areas in Europe.



Multifunctional use and greening of the cities



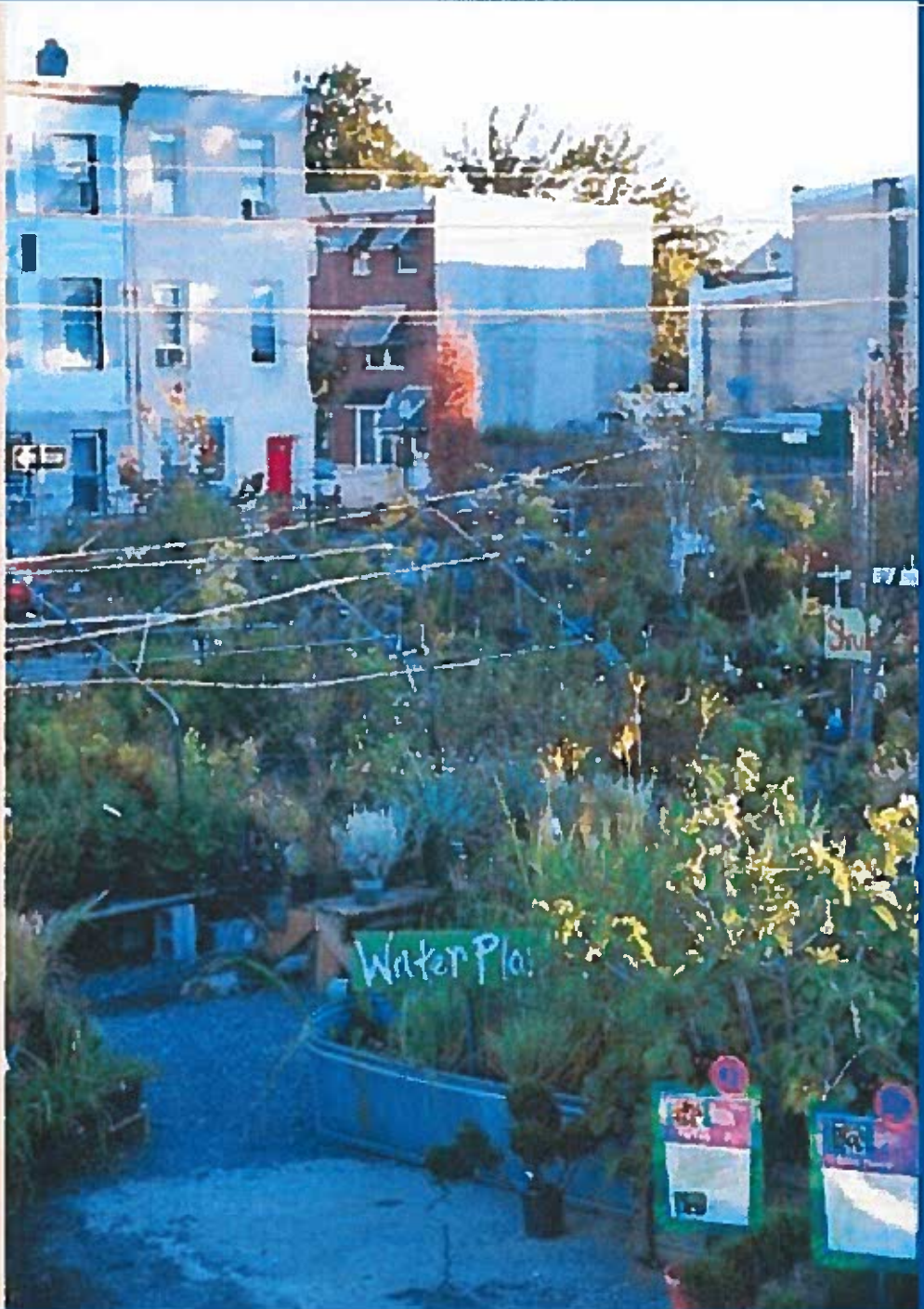
ALTERRA

WAGENINGEN UR

# FARMS

SARAH RICH  
PHOTOGRAPHS BY  
Matthew Benson

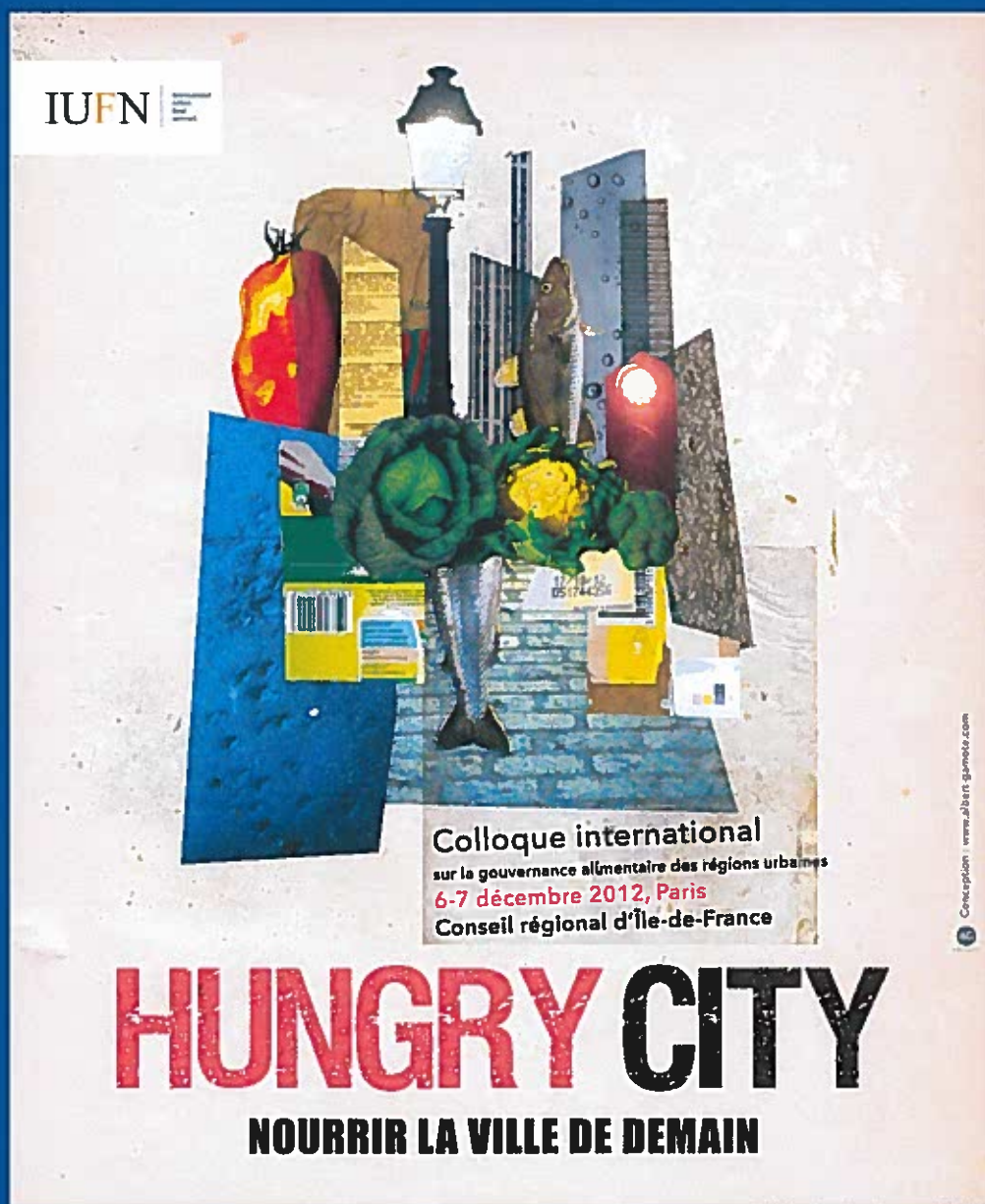
# URBAN



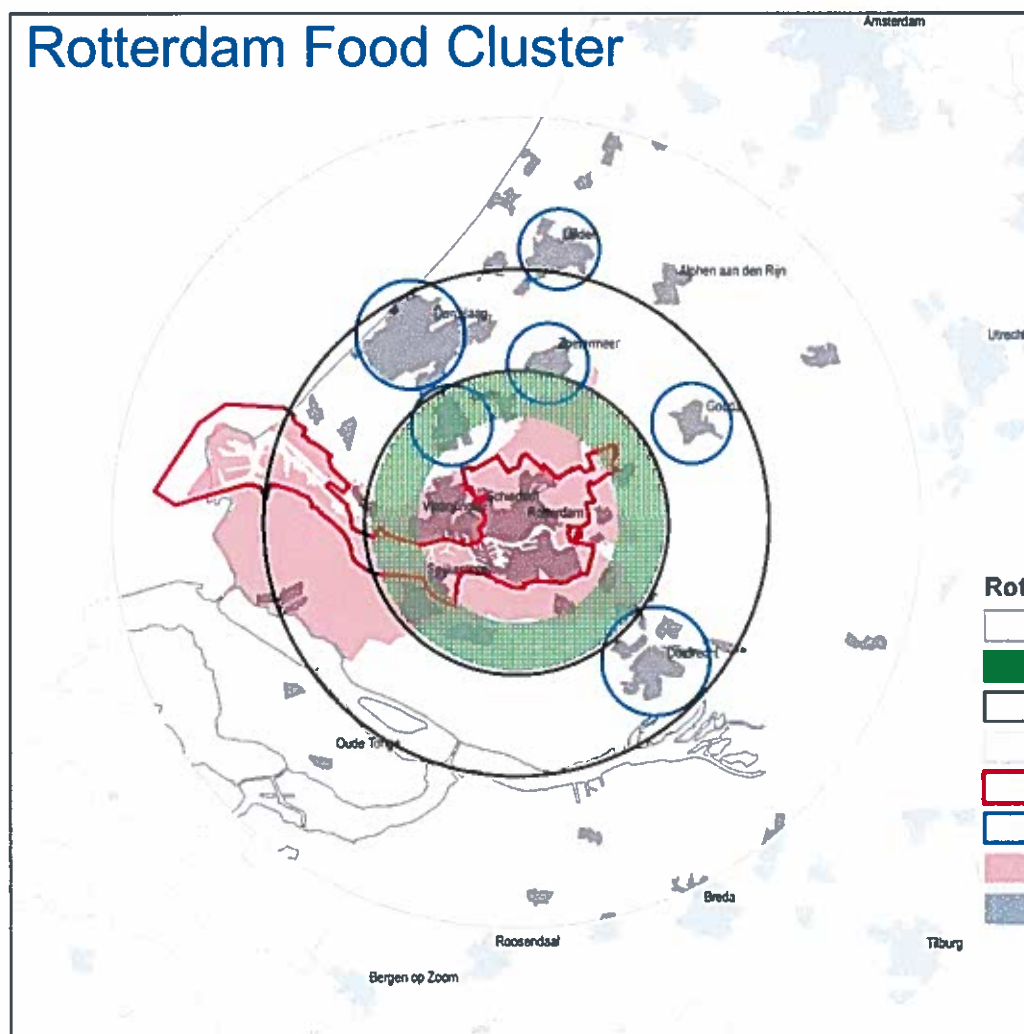
ALTERRA

WAGENINGENUR

# Carolyn Steel



# Rotterdam Food Cluster



## Rotterdam distance rings

- Zone 1: "Urban Core" 10 km
- Zone 2: "Green Buffer" + 5 km
- Zone 3: "Metro-Food-Ring" + 10 km
- Zone 4: "Transition-Zone" + 15 km
- Rotterdam Municipality
- Cities inside "Metro Food Ring"
- Rotterdam City Region
- ESRI Europe Urbanized areas

## Rotterdam distance rings

- Zone 1: "Urban Core" 10 km
- Zone 2: "Green Buffer" + 5 km
- Zone 3: "Metro-Food-Ring" + 10 km
- Zone 4: "Transition-Zone" + 15 km
- Rotterdam Municipality
- Cities inside "Metro Food Ring"
- Rotterdam City Region
- ESRI Europe Urbanized areas

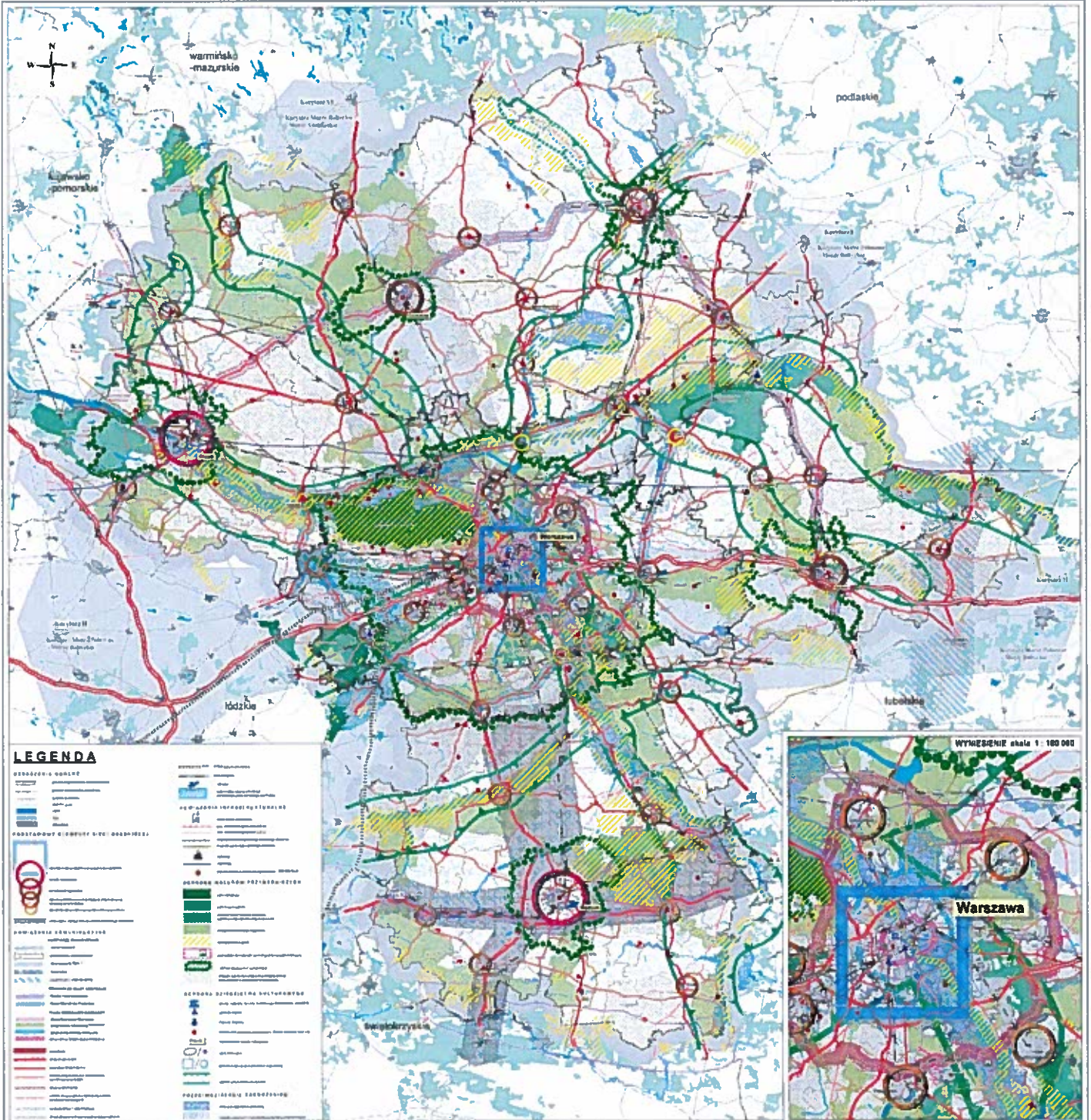
PLAN ZAGOSPODAROWANIA PRZESTRZENNEGO WOJEWÓDZTWA MAZOWIECKIEGO

KIERUNKI ZAGOSPODAROWANIA PRZESTRZENNEGO

DIRECTIONS OF SPATIAL DEVELOPMENT



Skala 1: 200 000



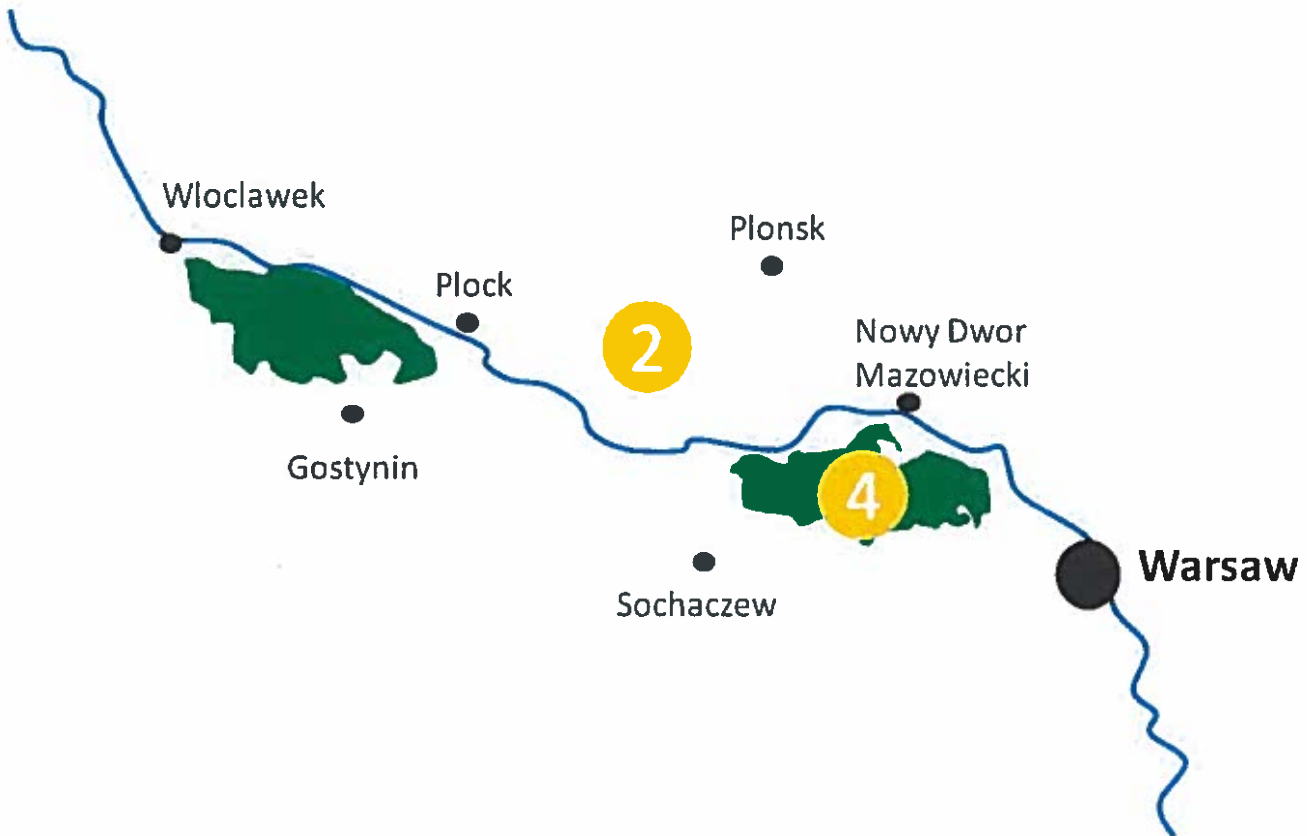
Opracowano w Mazowieckim Biurze Planowania Regionalnego w Warszawie, ul. Solęc 23, 00-410 Warszawa, tel. +48 22 510 49 00, www.mbrp.pl



ALTERRA

WAGENINGEN UR





Pilot areas 2 and 4 reflect both the successful historic connections beneficial for both countries.

# Re- integration of food issues, recreation and greening in urban planning

- Design of social mechanisms
- Network governance

