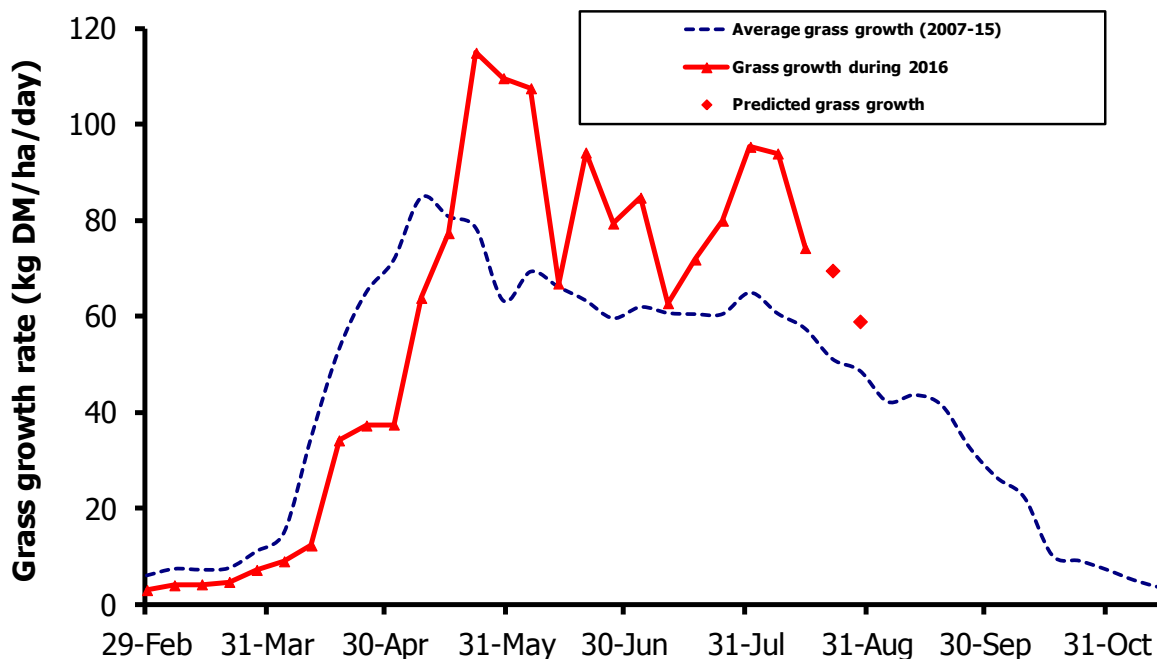


# GrassCheck

Week beginning 15 August



Grass growth and quality measured from swards at Hillsborough and Greenmount

Grass Growth (kg DM/ha/day)*		
Previous 3 weeks	15 Aug	74
Predicted	22 Aug	69
	29 Aug	59

\* 270 kg N/ha/year applied

Grass Quality	
Dry matter (%)	14.5
ME (MJ/kg DM)	11.6
Crude protein (%)	19.7
Sugars (% DM)	10.7

## Management notes.

- Growth rates have been above average since early June and are likely to remain so until the end of August.
- Continue to walk your grazing fields and assess covers.
- Maintain a degree of flexibility in your grazing management. For example, farmers in some areas are applying extended grazing techniques due to poor ground conditions. Alternatively, with grass growth still above average, be prepared to skip and round bale paddocks which are beyond the pre-graze target of 2800-3000kg DM/ha (1/3 up a wellington boot).
- Aim to examine cow condition in the herd. Target additional feeding to thinner cows, particularly those due to dry off within the next 6-8 weeks.