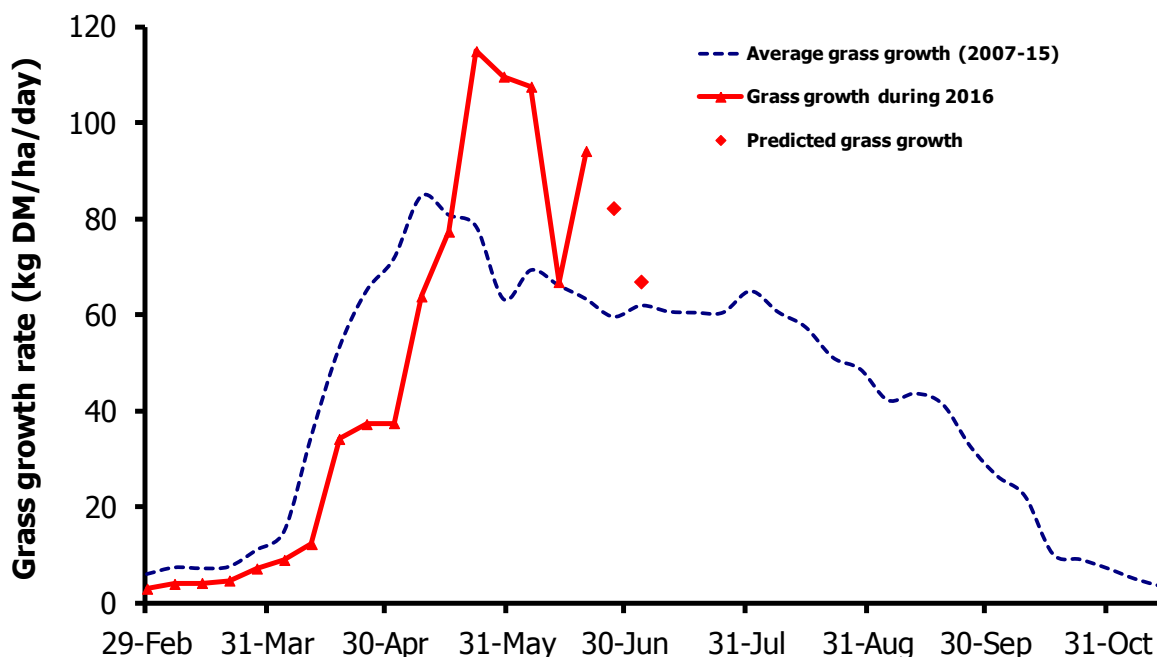


GrassCheck

Week beginning 20 June 2016



Grass growth and quality measured from swards at Hillsborough and Greenmount

Grass Growth (kg DM/ha/day)*		
Previous 3 weeks	20 June	94
Predicted	27 June	82
	4 July	67

* 270 kg N/ha/year applied

Grass Quality	
Dry matter (%)	15.3
ME (MJ/kg DM)	10.9
Crude protein (%)	17.3
Sugars (% DM)	12.1

Management notes.

- Grass growth has recovered well with recent heavy rain. Growth is expected to gradually fall to near the seasonal average over the next two weeks.
- Grass quality analysis has continued to be below average, as the amount of stem compared to green leaf is above average for the time of year.
- Effective grazing management continues to be a real challenge, as grass growth is likely to be greater than demand, whilst grass quality is deteriorating.
- It is essential to keep walking the grazing area to monitor quantity and quality and take appropriate action now.
- Top grazed fields if necessary (down to 5 cm stubble) to get quality, leafy grass available for the next grazing cycle, to maintain milk yields.