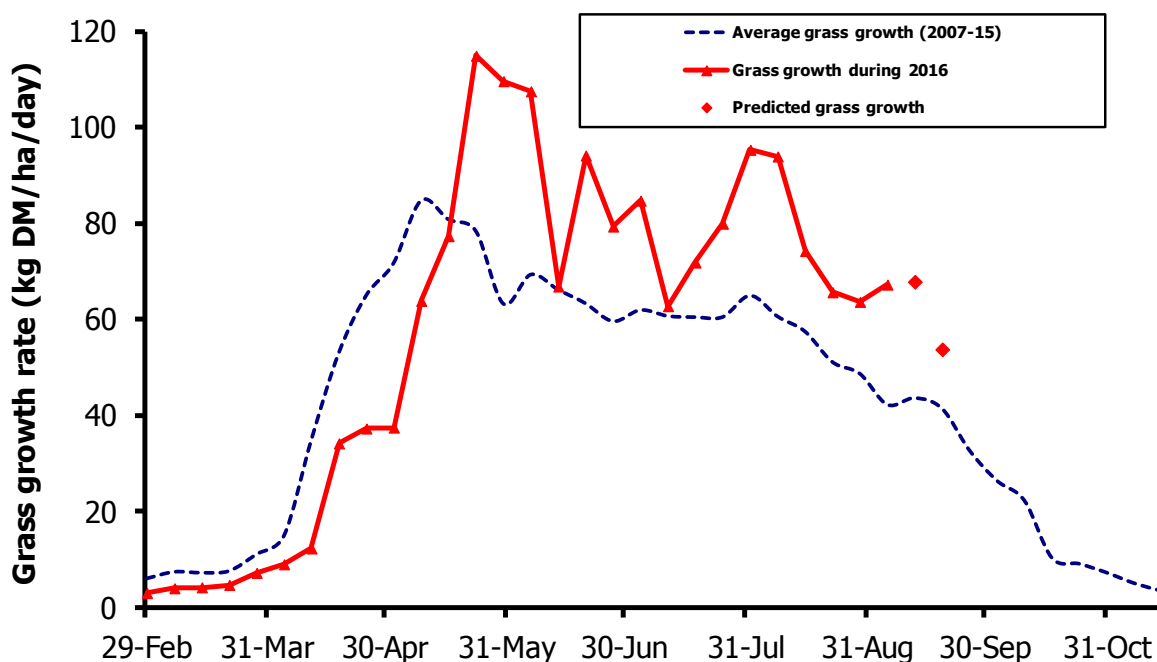


GrassCheck

Week beginning 5 September



Grass growth and quality measured from swards at Hillsborough and Greenmount

| Grass Growth (kg DM/ha/day)* | | |
|------------------------------|--------|----|
| Previous 3 weeks | 5 Sep | 67 |
| Predicted | 12 Sep | 67 |
| | 19 Sep | 54 |

* 270 kg N/ha/year applied

| Grass Quality | |
|-------------------|------|
| Dry matter (%) | 13.7 |
| ME (MJ/kg DM) | 11.3 |
| Crude protein (%) | 19.1 |
| Sugars (% DM) | 10.0 |

Management notes.

- Growth remains higher than normal, due to the current warm spell. Next week's yields are also expected to be higher than average.
- With the 'closed period' for sowing chemical fertiliser fast approaching, (15th September), ensure that applications are up to date, to promote autumn growth.
- All available grassland should be brought into the grazing cycle, to aid the build up of grass for utilisation later in the autumn, when growth rates decrease.
- Take a flexible approach to grazing management to improve performance.
- As days get shorter, grass intakes will decrease, so parlour settings should be adjusted to take this into account.