

Catchment Stakeholders Group Meeting

The Water Framework Directive – Aiming for good water quality

A living, working, active landscape valued by everyone.

2018 WFD Interim classification update

River Basin Districts Group

A living, working, active landscape valued by everyone.

Content

- 2015 Status and Targets for 2021
- 2018 Interim classifications
- Measures and Next Steps



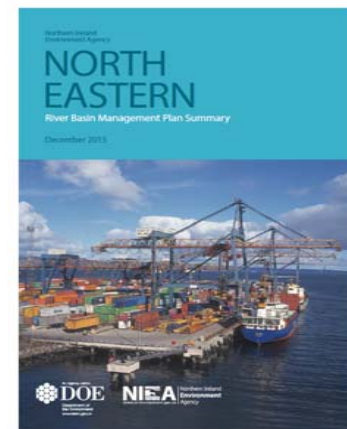
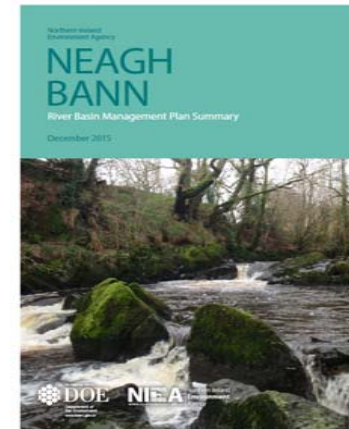
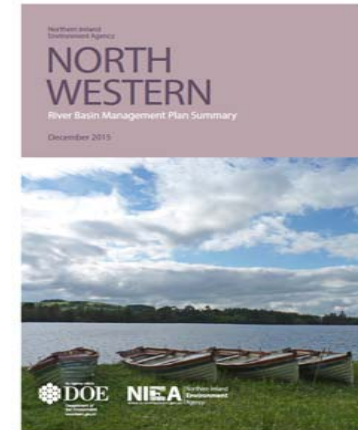
A living, working, active landscape valued by everyone.

Status and Targets

A living, working, active landscape valued by everyone.

2nd Cycle Plans

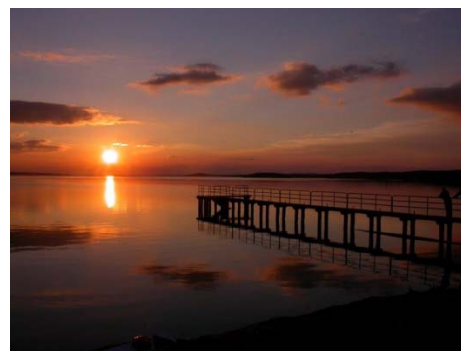
- **Second Cycle River Basin Management plans were published on 22 December 2015**
- **The plans set out the objectives, and identified national measures for 2015-2021**
- **In September 2018 we published interim statistics on status**
- **A progress report will be prepared for EC in December 2018**



A living, working, active landscape valued by everyone.

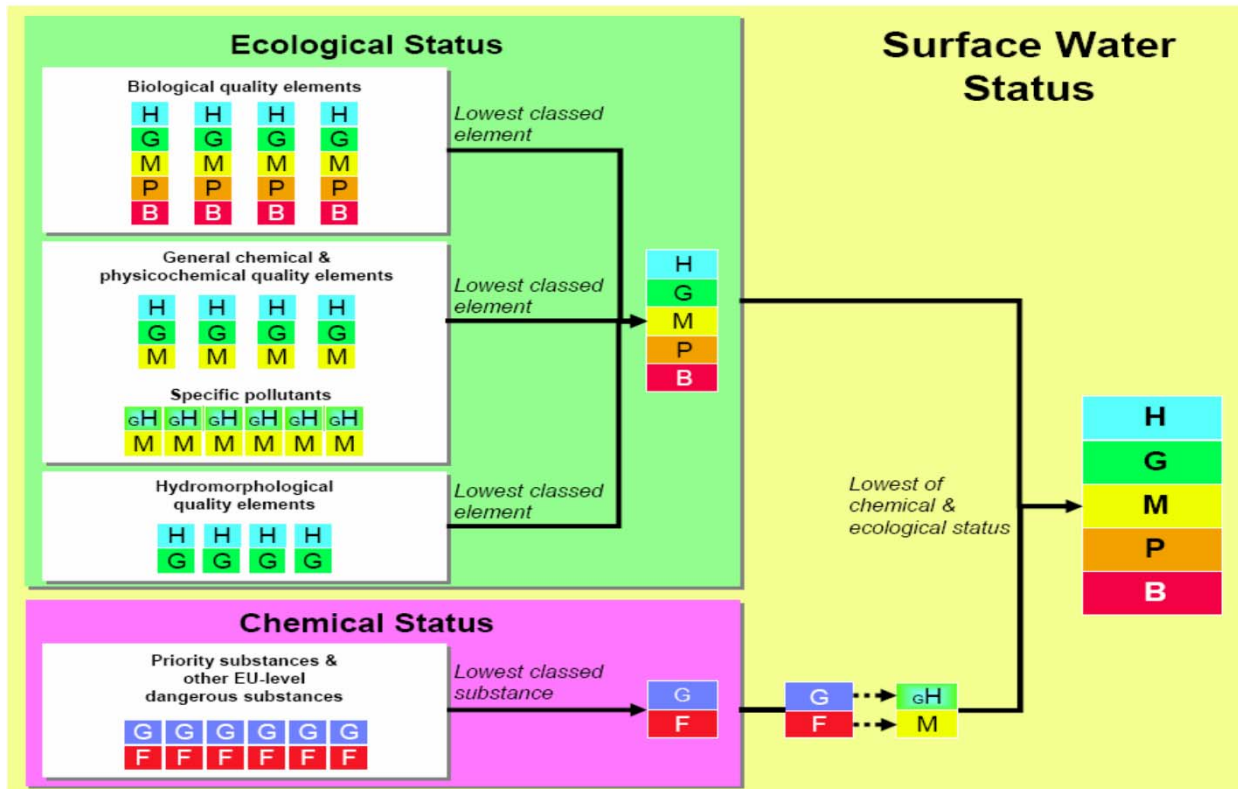
What do we monitor

- **40 different elements relating to water status across 571 water bodies**
- **Biological monitoring**
 - Plants, Diatoms, Phytoplankton
 - Invertebrates
 - Fish
- **Chemical monitoring programmes**
 - Nutrients, Oxygen Levels, Acidity, Metals, Pesticides, Flame Retardants, etc
- **Physical habitat assessments**
- **River flows and lake levels**



A living, working, active landscape valued by everyone.

Factors Determining Progress



A living, working, active landscape valued by everyone.

Factors Determining Progress

- **'One out all out' -Stringent assessment required by WFD can mask improvements**
- **If one out of up to 40 assessments fails, then the water body fails**
- **In 2015 for individual assessments at element level (e.g. invertebrates) over 81% were at good or better yet the final classification for all water bodies was only 37%**
- **New data including additional tests and monitoring sites**

A living, working, active landscape valued by everyone.

**The total number of river tests carried out has increased since 2015
(319 extra)**

% ≥ Good at individual level increased since 2015

	WFD2015	WFD2018
Total No of tests	4106	4425
No of tests at High or Good	3339	3629
% at Good or better	81.3	82.0

A living, working, active landscape valued by everyone.

**SURFACE WATER BODIES
STATUS 2015**

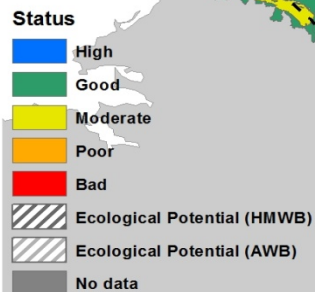
Good or better status 2015

33% Rivers

24% Lakes

36% Transitional/Coastal

65% Groundwater



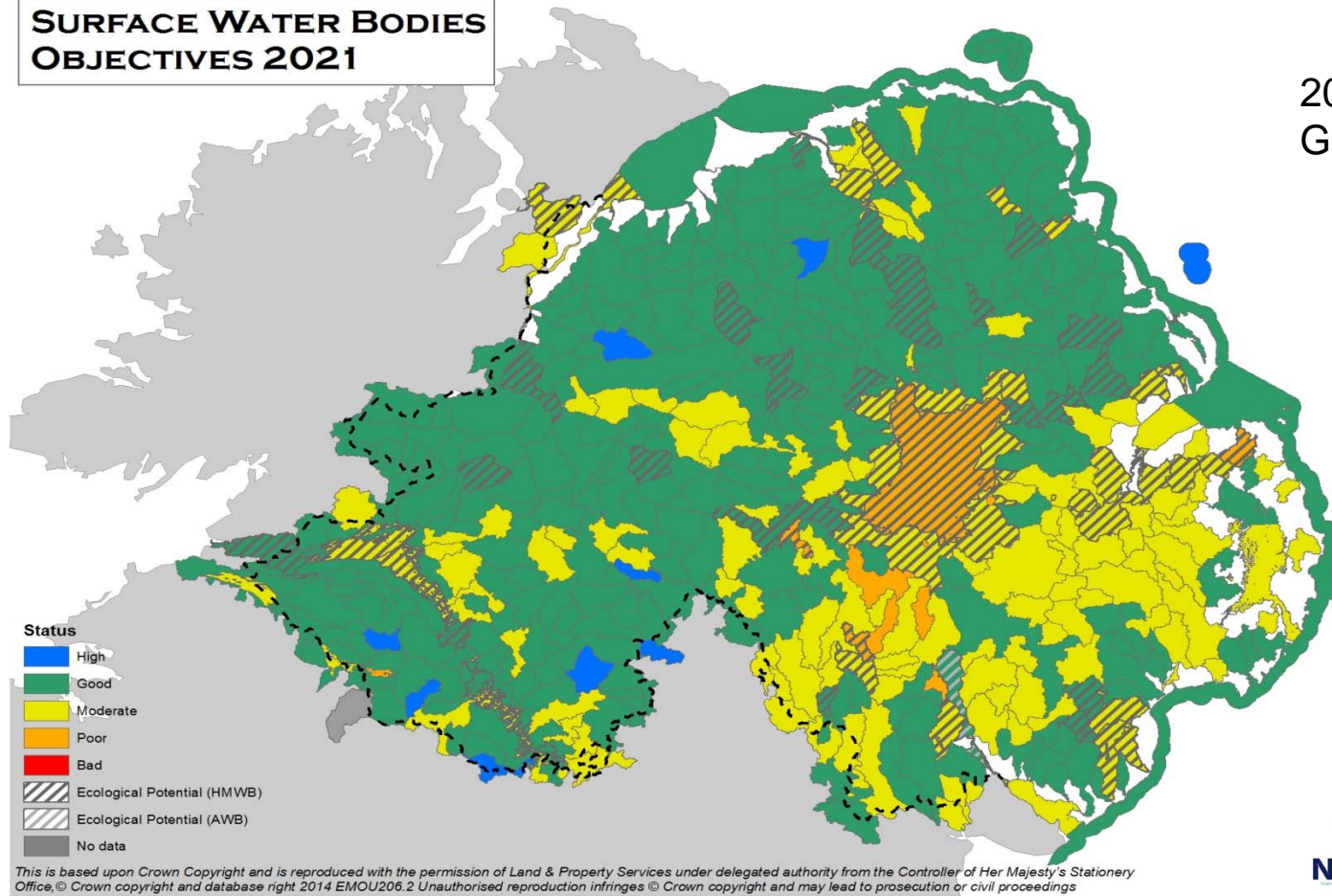
This is based upon Crown Copyright and is reproduced with the permission of Land & Property Services under delegated authority from the Controller of Her Majesty's Stationery Office, © Crown copyright and database right 2014 EMOU206.2 Unauthorised reproduction infringes © Crown copyright and may lead to prosecution or civil proceedings



A living, working, active landscape valued by everyone.

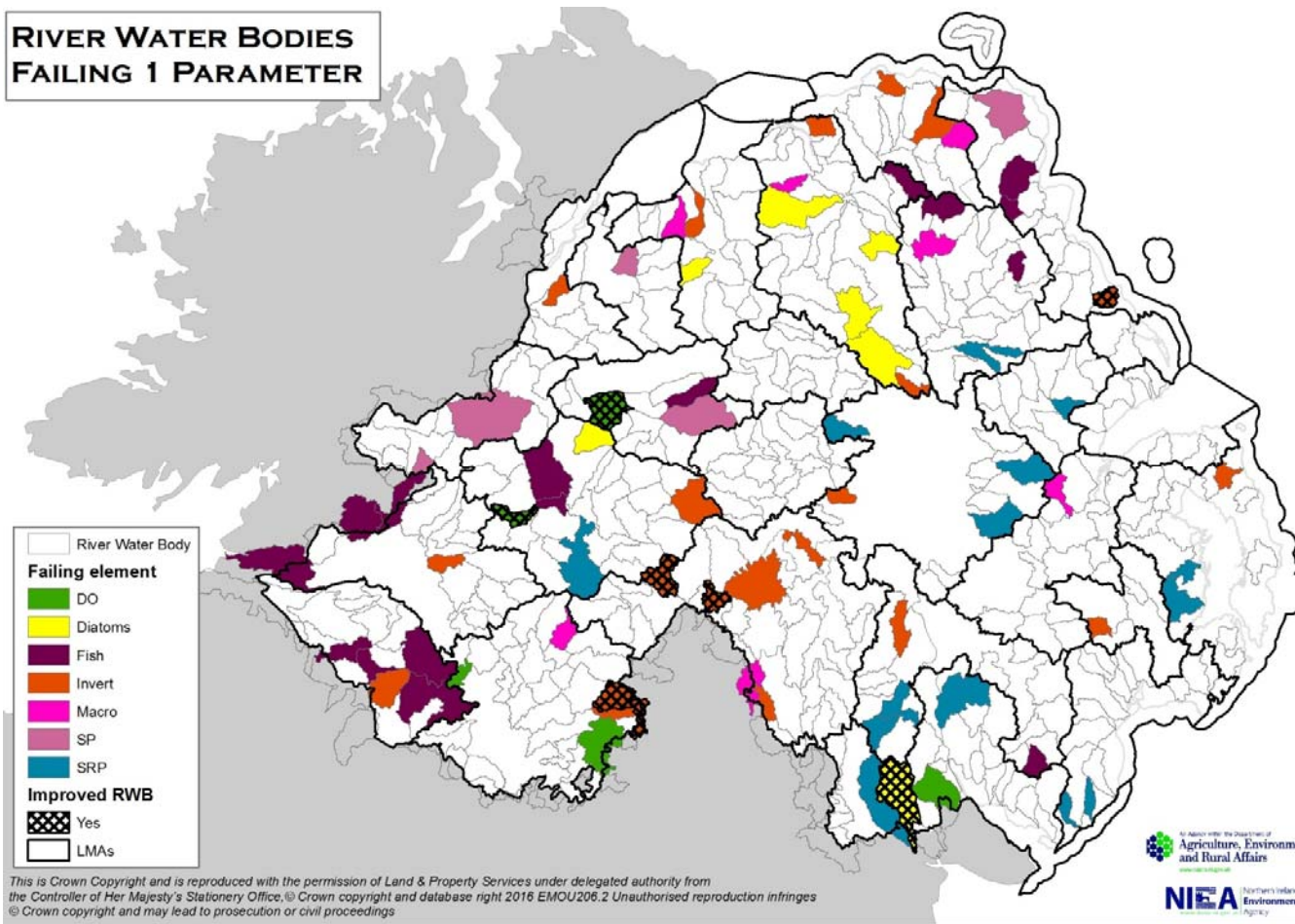
SURFACE WATER BODIES OBJECTIVES 2021

2021 Target of 70%
Good or better



A living, working, active landscape valued by everyone.

RIVER WATER BODIES FAILING 1 PARAMETER



A living, working, active landscape valued by everyone.

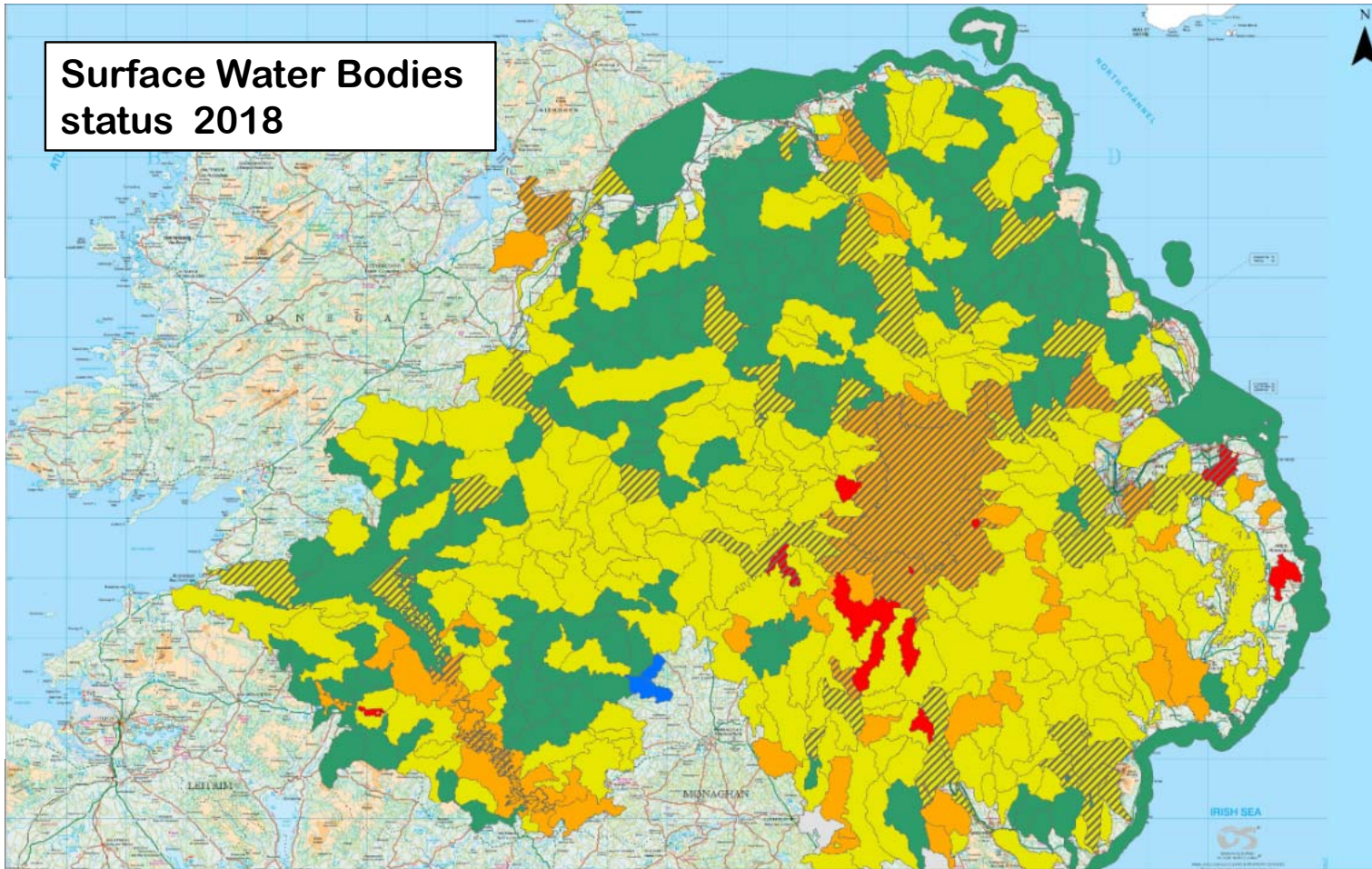
Surface Water Bodies status 2018

Legend

— International Border (Ireland)

WFD2018 Status

- HIGH (2)
- GOOD (139)
- MODERATE (223)
- MEP (33)
- POOR (34)
- PEP (8)
- BAD (6)
- BEP (2)
- NO DATA (3)



Based upon Crown Copyright and is reproduced with the permission of Land & Property Services under delegated authority from the Controller of Her Majesty's Stationery Office.
© Crown copyright and database right 2018 EMOU 206.2.



A living, working, active landscape valued by everyone.

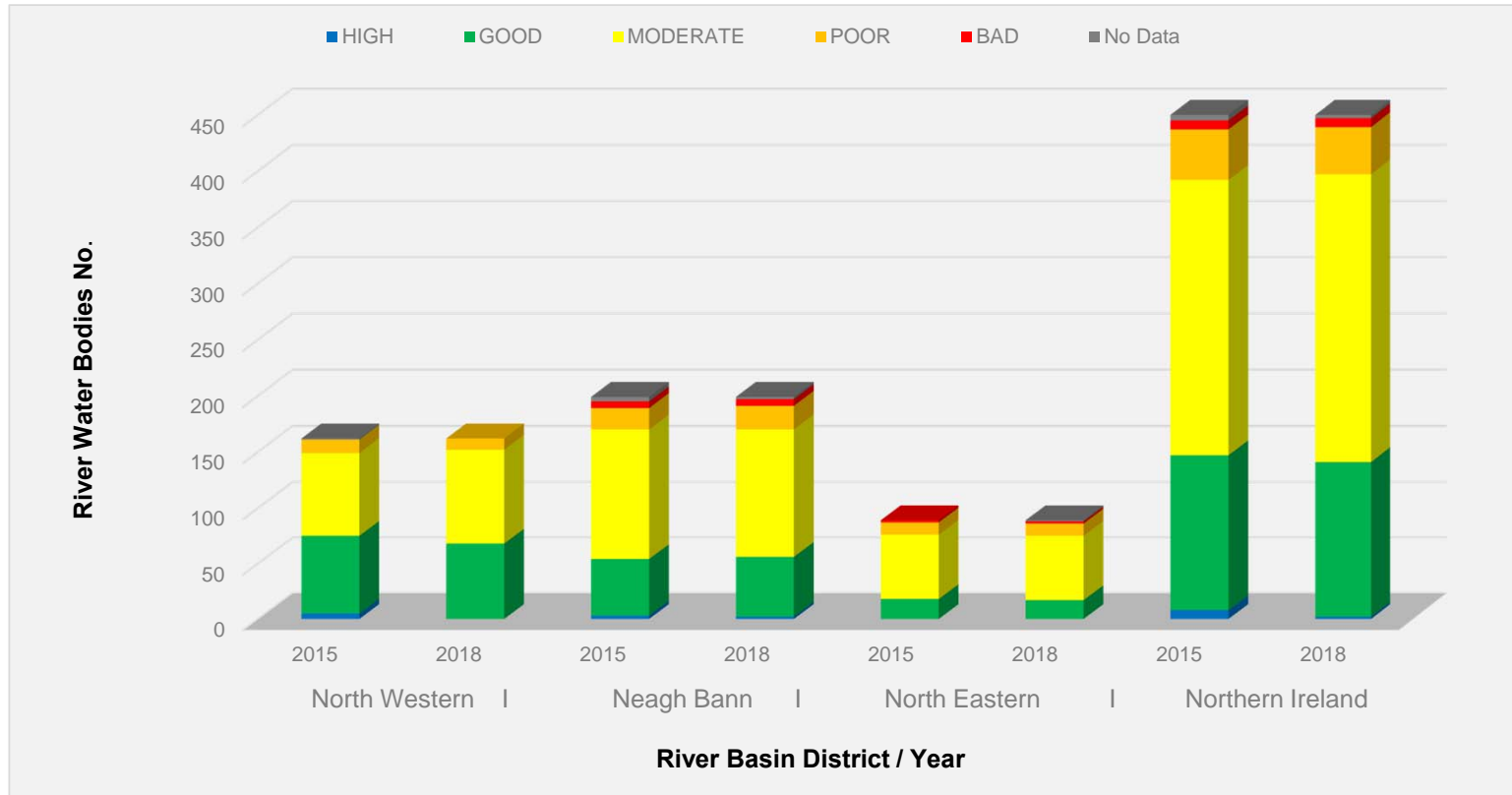


Statistics for Rivers

450 in total

2015 – 32.7%
Good or better

2018 – 31.3%
Good or better



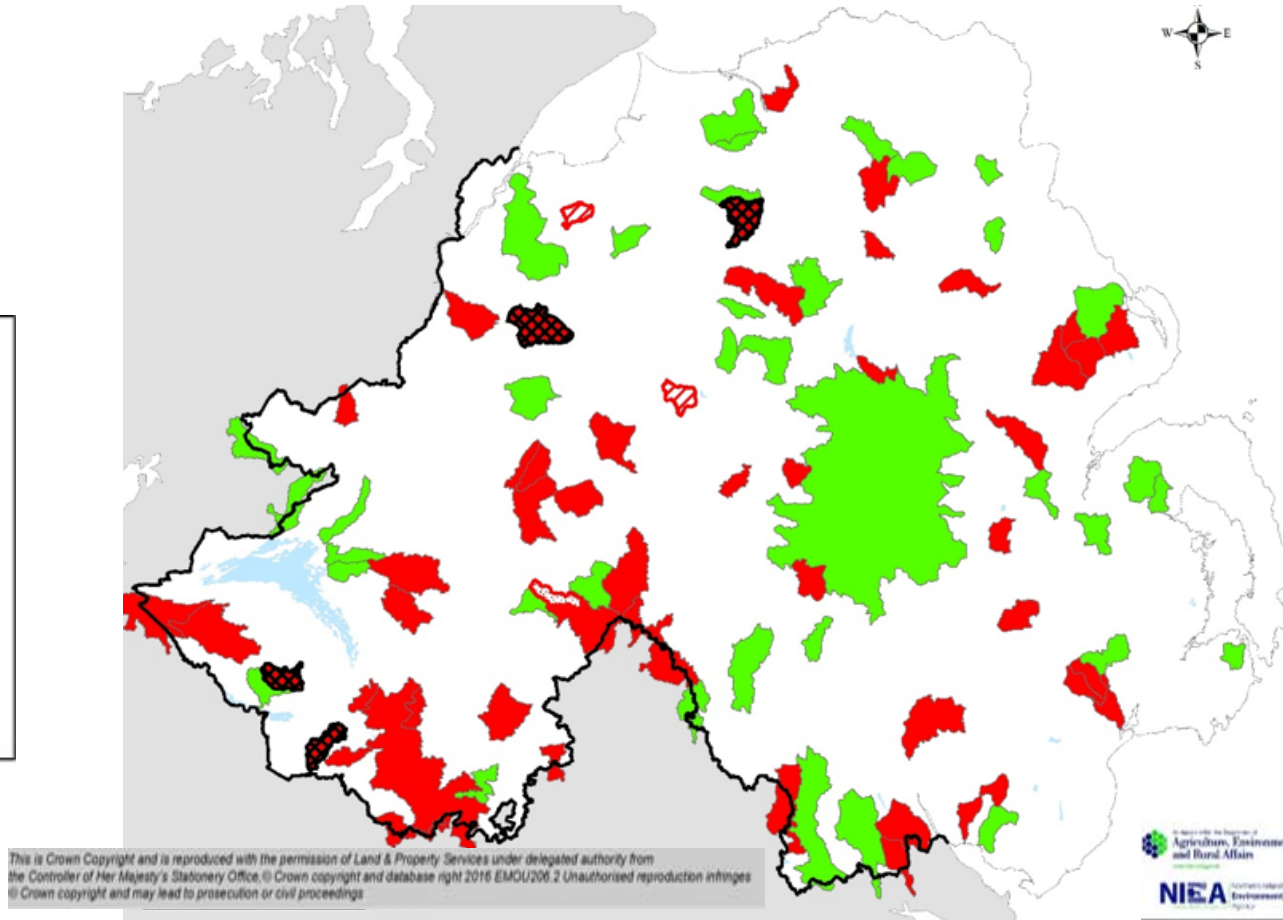
A living, working, active landscape valued by everyone.

2018 Overall improvements and deteriorations of river waterbodies

Green Improved

Red - Deteriorated

In total
37 improved
52 deteriorated



A living, working, active landscape valued by everyone.

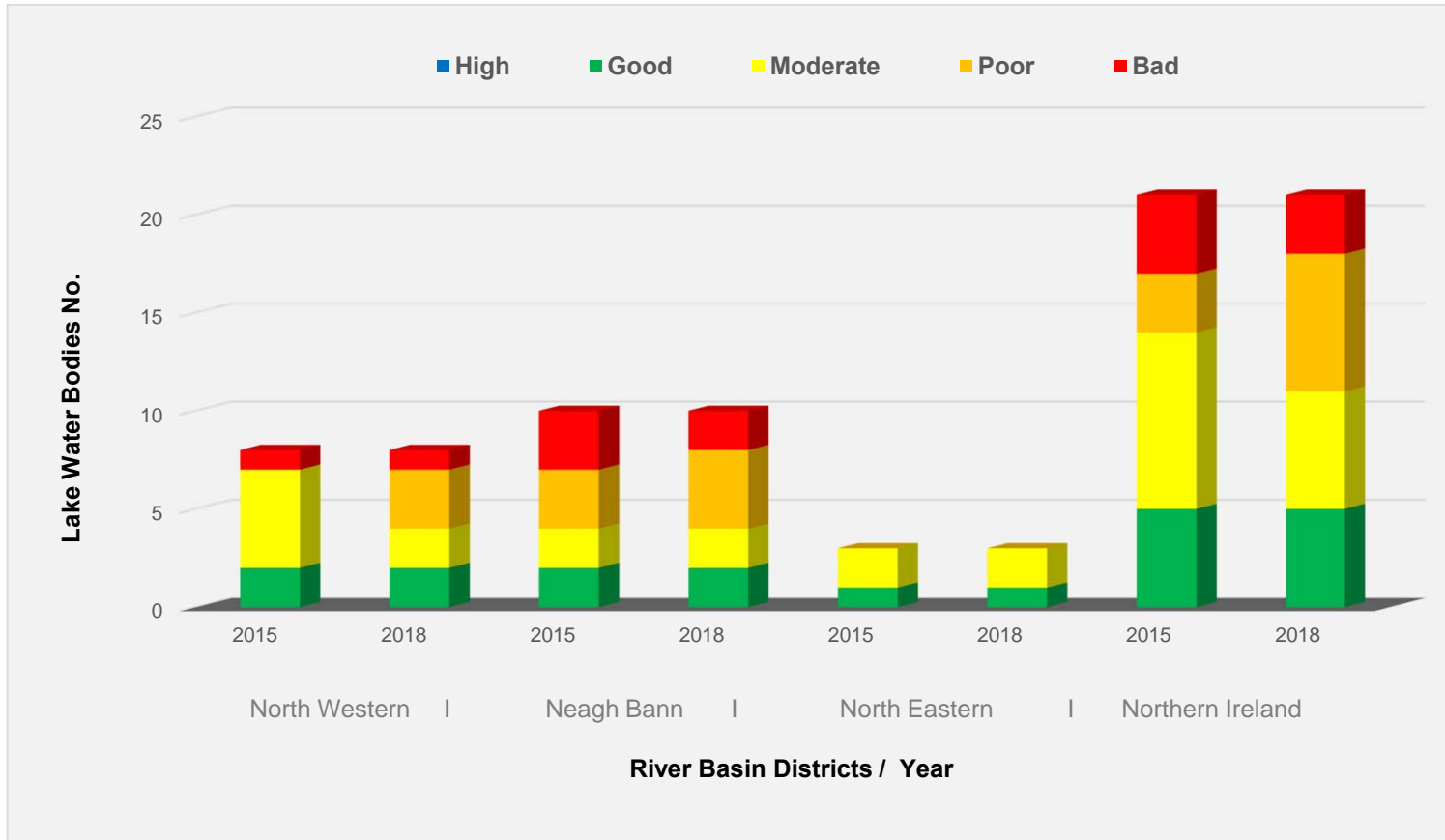
2015 - 2018 Percentage change in Water bodies at Good or better

DO SATURATION PH MACROPHYTES INVERTS AMMONIA FISH DIATOMS MORPHOLOGY SRP



A living, working, active landscape valued by everyone.

Statistics for Lakes



21 in total
5 Good or better 2015 and 2018

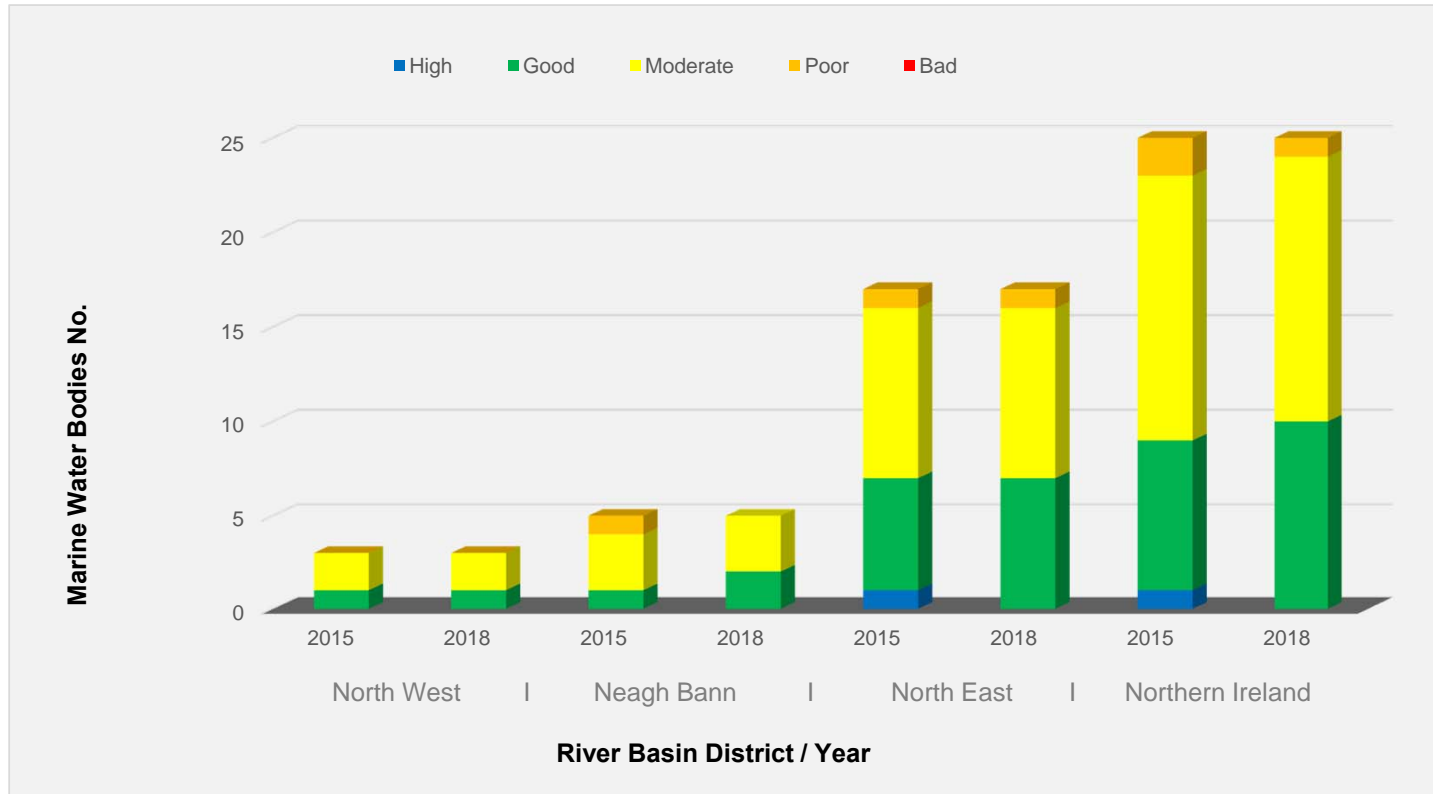
One improved bad to poor

Two deteriorated mod to poor

A living, working, active landscape valued by everyone.

25 in total
 2015 – 9 Good or better
 2018 – 10 Good or better

Statistics for Transitional and Coastal Waterbodies



A living, working, active landscape valued by everyone.

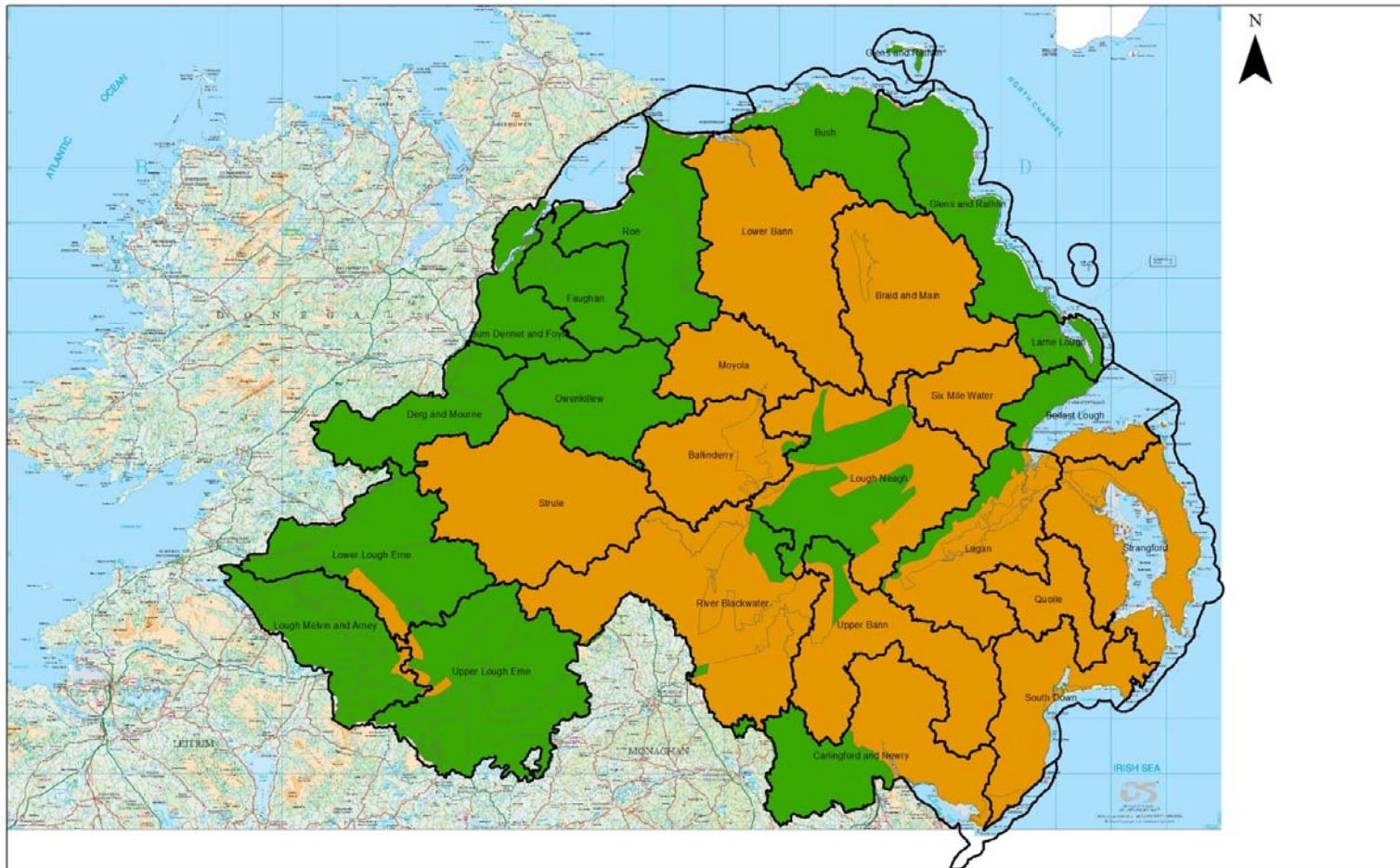
Compliance comparison for Northern Ireland's Identified Bathing Waters.

16	Excellent
6	Good
4	Sufficient
0	Poor

BATHING WATER	2016	2017	2018
Magilligan (Benone)			
Magilligan (Downhill)			
Castlerock			
Portstewart			
Portrush (Mill) West			
Portrush (Cuman) East			
Portrush (Whiterocks)			
Portballintrae			
Ballycastle			
Waterfoot			
Camlough			
Ballygally			
Brown's Bay			
Helen's Bay			
Crawfordeburn			
Ballyholme			
Groomsport			
Millisle			
Ballywater			
Cloughy	Not identified	Not identified	
Tyrella			
Marble Hill Co Down			
Newcastle			
Cranfield (Cranfield Bay)			
Kilclief	Not identified	Not identified	
Ballyhoman	Not identified	Not identified	

A living, working, and growing value

65%
Groundwater
Good or
better



Groundwater 2015 Status with LMA overlay

0 15 30 60 Kilometers

NIEA Northern Ireland
Environment
Agency
www.daera-ni.gov.uk

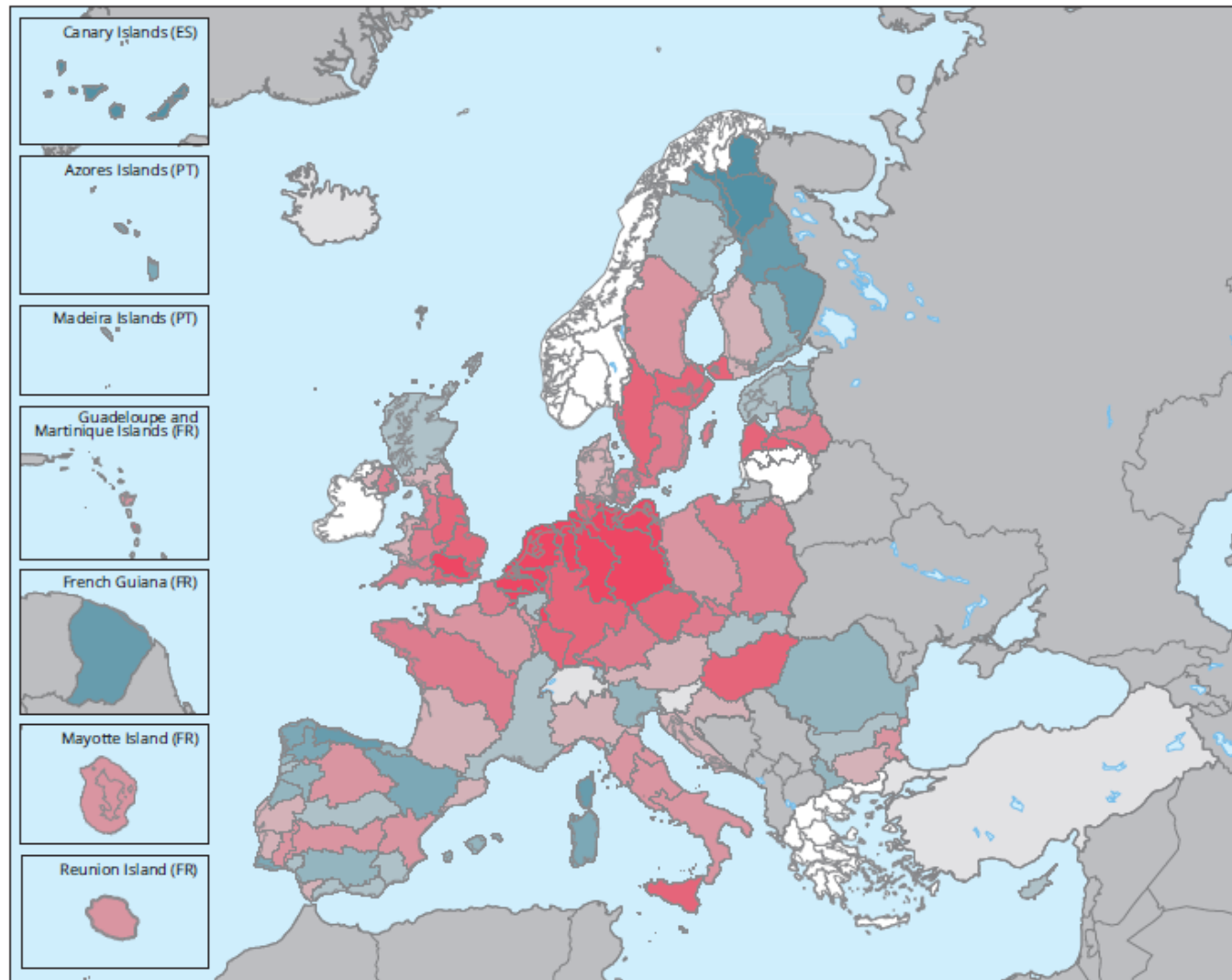
An Agency within the Department of
**Agriculture, Environment
and Rural Affairs**
www.daera-ni.gov.uk

This is based upon Crown Copyright and is reproduced with the permission of Land & Property Services under delegated authority from the Controller of Her Majesty's Stationery Office, © Crown copyright and database right 2016 EMOU206.2

Unauthorised reproduction infringes © Crown copyright and may lead to prosecution or civil proceedings

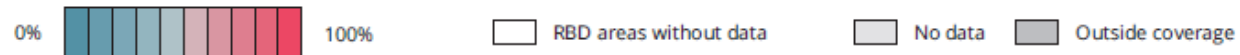
NIEA Northern Ireland
Environment
Agency
www.daera-ni.gov.uk

An Agency within the Department of
**Agriculture, Environment
and Rural Affairs**
www.daera-ni.gov.uk



Red means
<50% Good
status.

Percentage of number water bodies not in good ecological status or potential per river basin district (RBD) in second RBMPs



European waters —
Assessment of status and
pressures 2018 EEA
Report No 7/2018

2nd cycle Measures and Next Steps

A living, working, active landscape valued by everyone.

Second Cycle Measures

136 measures were published in Second Cycle RBMPs

Measures across all sectors for example:

- Sewage and Industry
- Agriculture
- Forestry
- Fisheries
- End of September 2018 - 85% of measures on track

A living, working, active landscape valued by everyone.

Key Measures for Waste Water

- Long term water strategy – 25yr plan for the sustainable use of water including meeting WFD, FD & UWWTD
- DfI led “Living with Water Programme” (LWWP)
- UWWTD - Sensitive area review to be conducted 2019
- Prioritising actions to deal with misconnections

A living, working, active landscape valued by everyone.

Key Measures for Agriculture

- Nitrates Action Programme review currently ongoing
- Farmer training and Education through CAFRE and new Knowledge Advisory service
- SALMS recommendations – soil testing in sub catchments of the Upper Bann, Colebrook and Strule
- Environmental Farming Scheme water protection measures

A living, working, active landscape valued by everyone.

Environmental Farming Scheme (EFS)

- EFS water quality measures aim to prevent direct run off of nutrients and sediment erosion to rivers:
 - Creation of Riparian Buffer Strips
 - Riverbank Fencing
 - Pasture pumps, drinking troughs and pipe work.

A living, working, active landscape valued by everyone.

Uptake of EFS Water Quality Measures

- Tranche 1 – 2017
 - 529 km of rivers protected
 - Expenditure £3.3m
- Tranche 2 – 2018
 - 900 km rivers protected
 - Expenditure £6.5m (estimated)
- Tranche 3 opens in 2019. Application process is online www.daera-ni.gov.uk

A living, working, active landscape valued by everyone.

INTERREG Projects

- €283m INTERREG VA Programme within European Union 2014 – 2020 NI, ROI and Western Scotland
- 85% of the Programme is provided through the European Regional Development Fund (ERDF). The remaining 15% is match-funded by the Irish Government and the Northern Ireland Executive. Under the Environment Theme there were a number of successful water based projects:
 - CatchmentCare Blackwater, Finn and Arney (13.8m)
 - Source to Tap Derg and Erne (4.9m)
 - SWIM Bathing waters (1.0m)
 - SWELL Carlingford and Lough Foyle (3.28m)

A living, working, active landscape valued by everyone.

Local Measures

Catchment investigations	Stakeholder engagement
River Surveys	Attendance at shows
Local angling clubs	River fly partnership
Citizen science	Rivers Trusts
Environment fund	Local Council initiatives

A living, working, active landscape valued by everyone.

Forward Look to the next River Basin Cycle

Water Management Unit will be consulting on the Timetable for Third Cycle River Basin Management Plans



Consultation opens 22 December 2018 and closes 22 June 2019.

The document will be published on our website:

<https://www.daera-ni.gov.uk/articles/delivery-and-public-participation>

A living, working, active landscape valued by everyone.

Summary

- No overall improvement in Surface water classifications since 2015
- Improvements in some catchments have been masked by deteriorations in others
- Deteriorations for SRP are a particular concern
- WMU will investigate these changes
- Continue to implement 2nd cycle measures

A living, working, active landscape valued by everyone.

Questions

A living, working, active landscape valued by everyone.