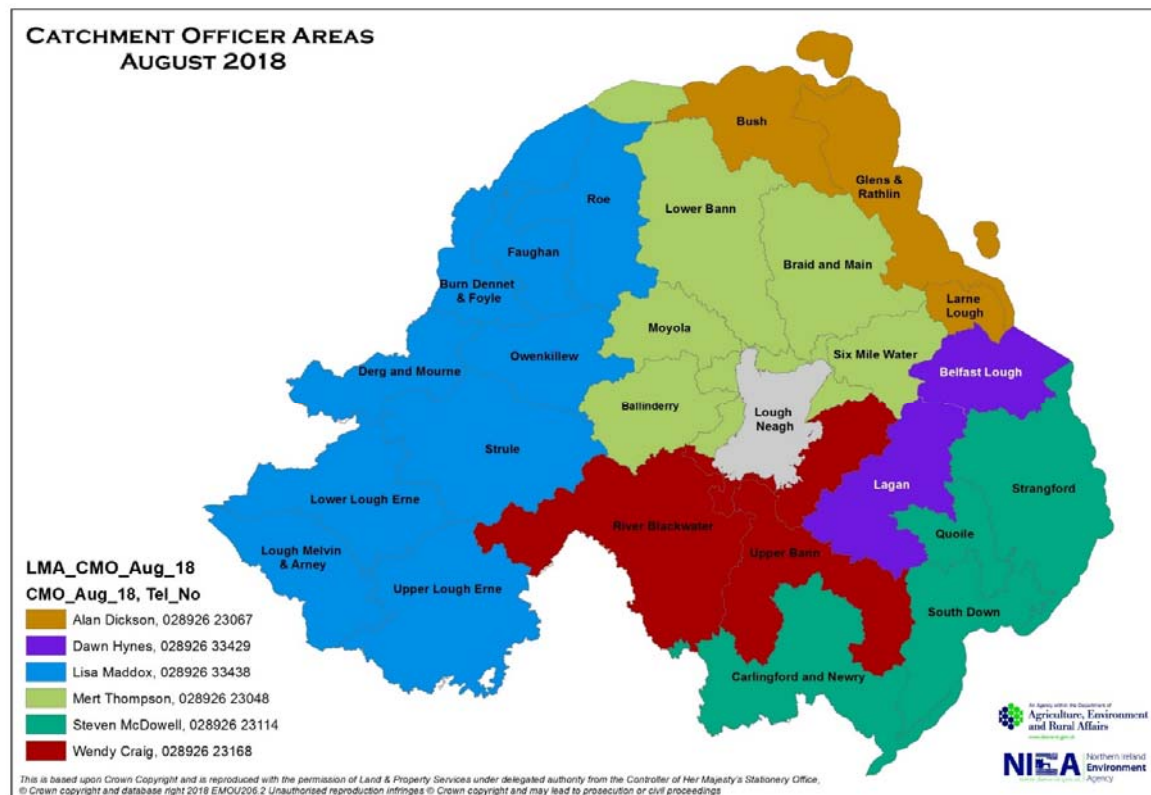


North Eastern CSG 2018 Catchment Officer Presentation



A living, working, active landscape valued by everyone.

Catchment officers and their catchments



A living, working, active landscape valued by everyone.

North Eastern Catchment Officer Presentation

- How NIEA determines status of a water body.
- Interim status within the North East.
- What the catchment team are doing to improve status.



What NIEA monitor to establish a water body's status.

How we establish the status of a river

- **Over 40 different elements relating to water status**
- **Biological monitoring**
Plants, Diatoms, Phytoplankton
Invertebrates, Fish
- **Chemical monitoring programmes**
Nutrients, Oxygen Levels, Acidity,
Metals, Pesticides etc
- **Physical habitat assessments**
- **River flows and lake levels**

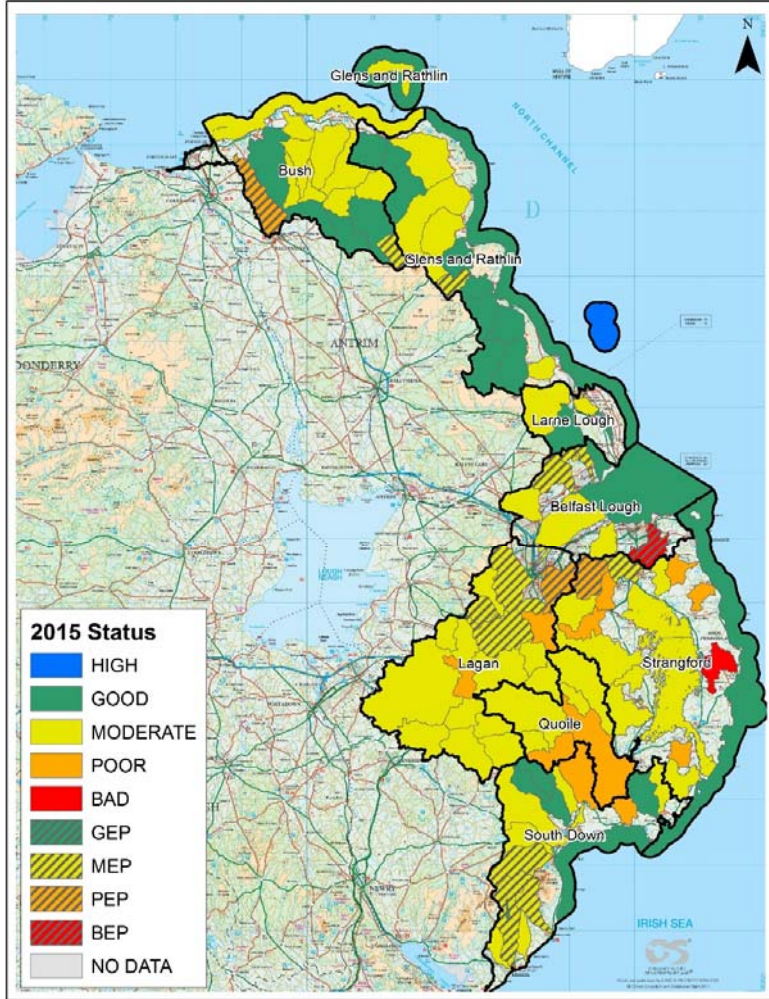
One out all out rule!



Interim classifications

Surface Water Classification for NE 2015

(26 Water Bodies at Good or Better)

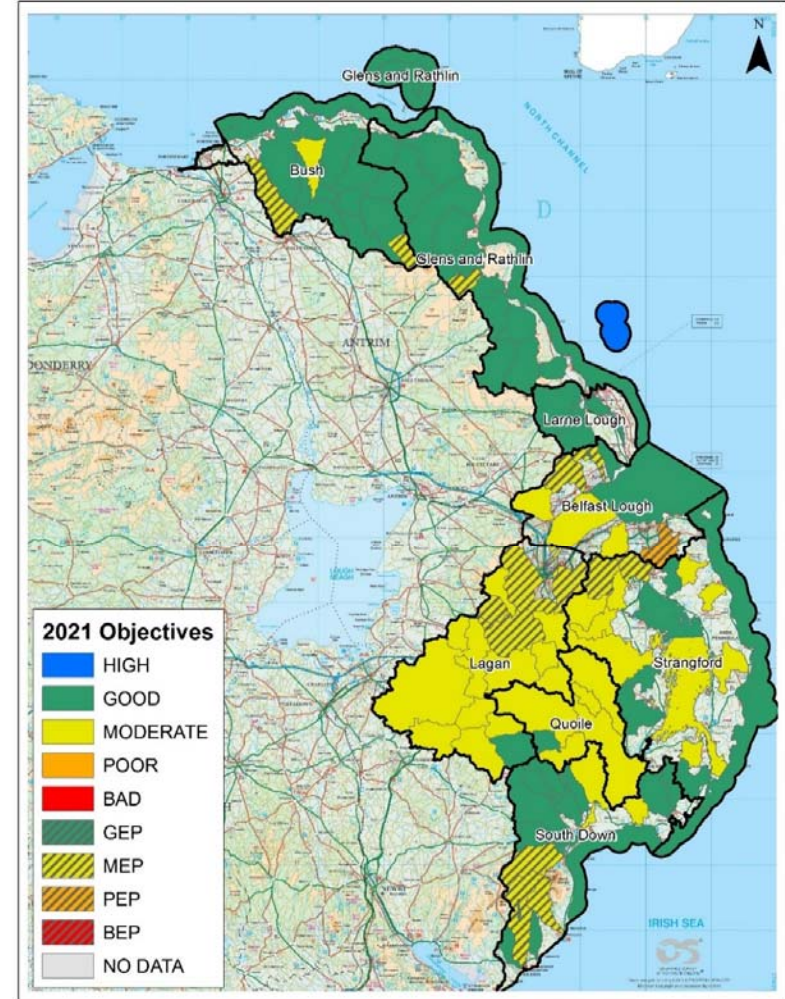


North Eastern RBD 2015 Status

This is based upon Crown Copyright and is reproduced with the permission of Land & Property Services under delegated authority from the Controller of Her Majesty's Stationery Office, © Crown copyright and database right 2016 EMOU206.2

Surface Water Objectives for NE 2021

(78 Water Bodies to be at Good or Better)

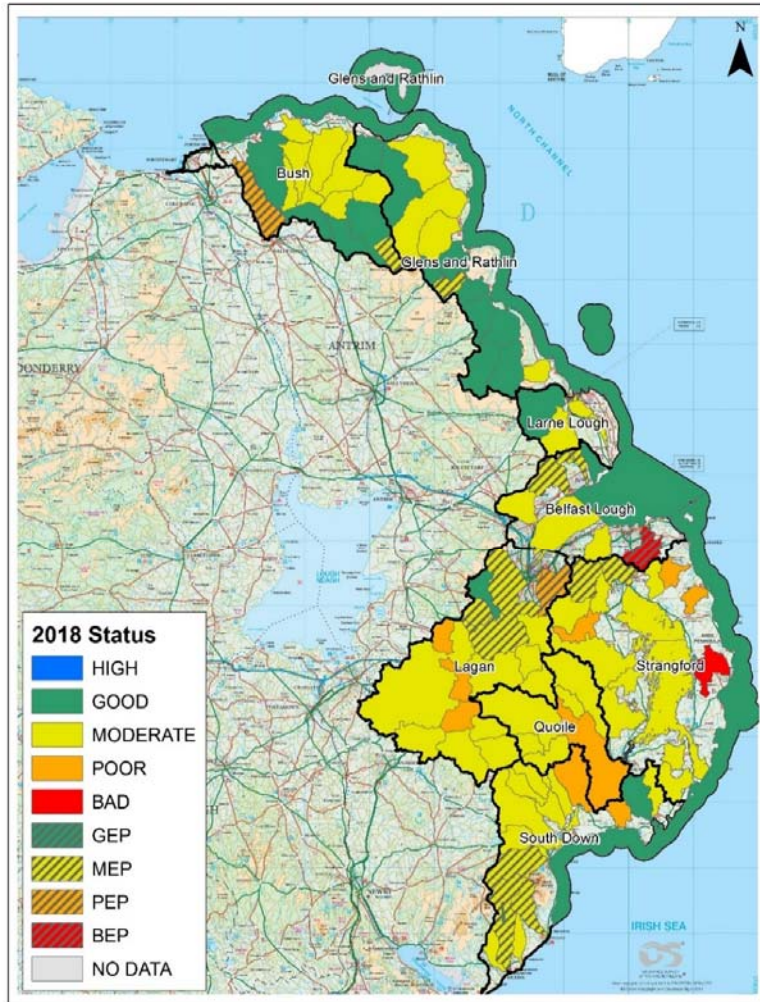


North Eastern RBD 2021 Objectives

This is based upon Crown Copyright and is reproduced with the permission of Land & Property Services under delegated authority from the Controller of Her Majesty's Stationery Office, © Crown copyright and database right 2016 EMOU206.2

Interim Surface Water Classification for NE 2018

(30 Water bodies at Good)

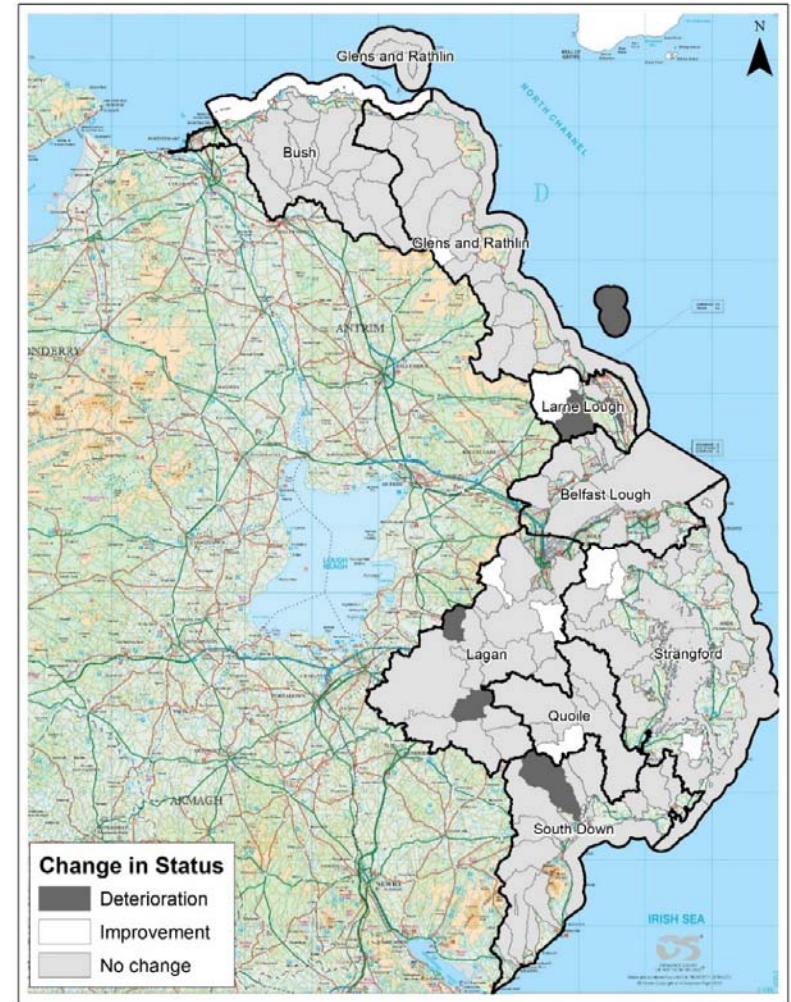


North Eastern RBD 2018 Interim Status

This is based upon Crown Copyright and is reproduced with the permission of Land & Property Services under delegated authority from the Controller of Her Majesty's Stationery Office, © Crown copyright and database right 2018 EMOU206.2

Changes in Surface Water Classification for NE since 2015

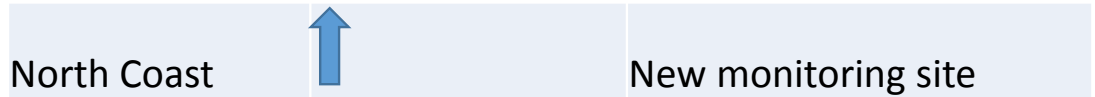
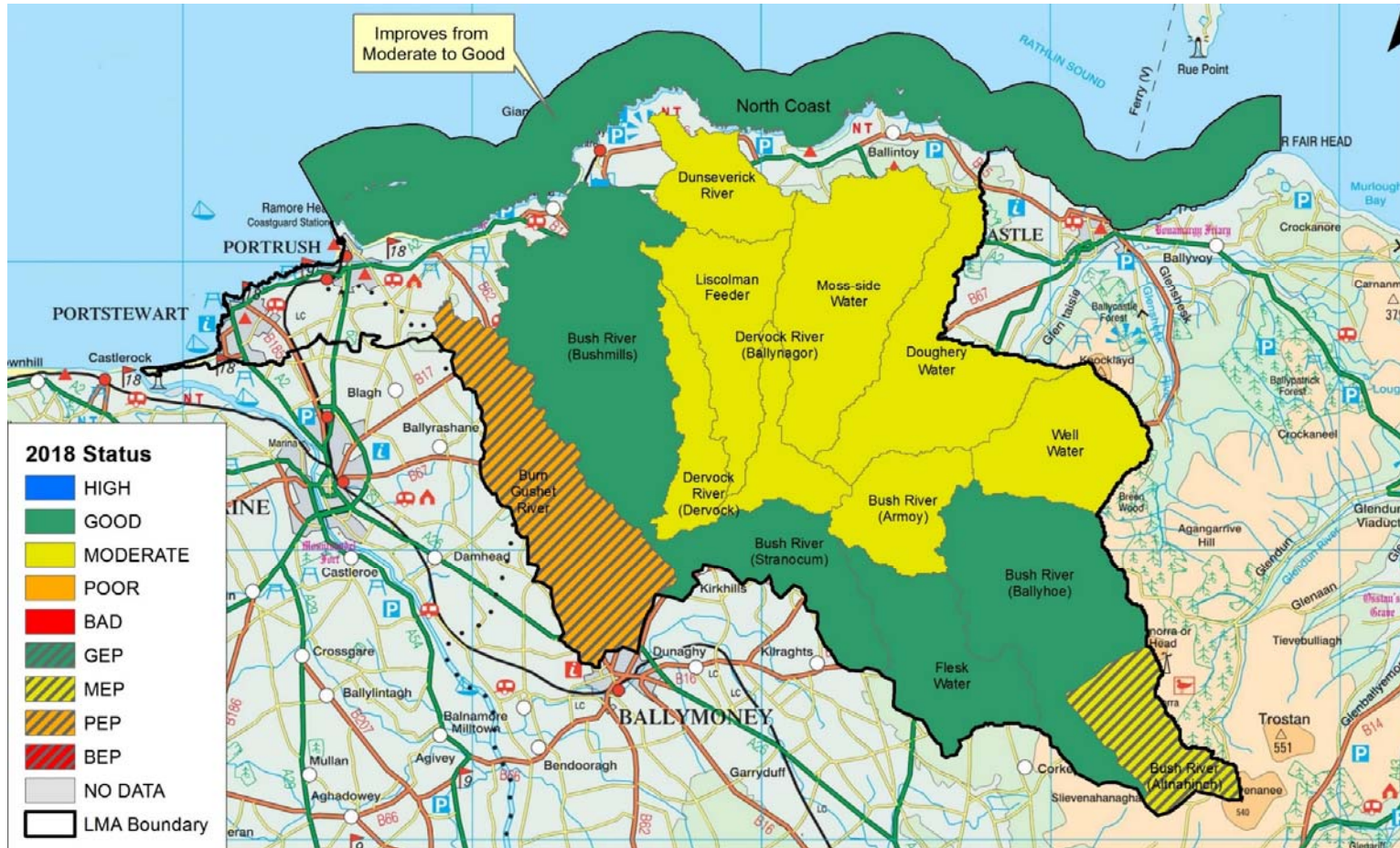
(10 Improved, 7 Declined)

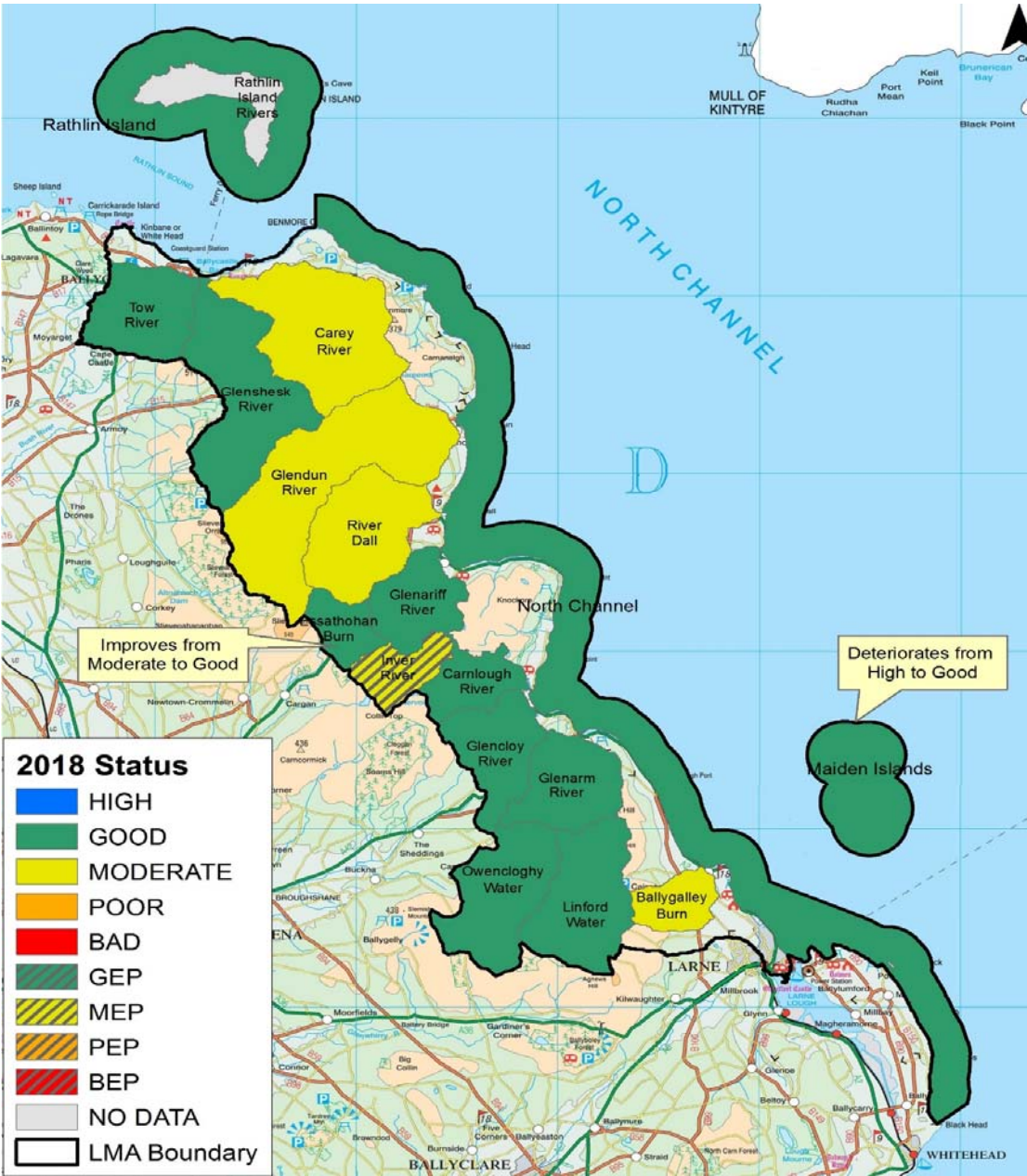


North Eastern RBD 2015 v 2018 Changes in Status

This is based upon Crown Copyright and is reproduced with the permission of Land & Property Services under delegated authority from the Controller of Her Majesty's Stationery Office, © Crown copyright and database right 2018 EMOU206.2

Bush LMA – One water body has improved





Glens including Rathlin LMA

- Two changed, one improved, one declined

Essathohan
Burn



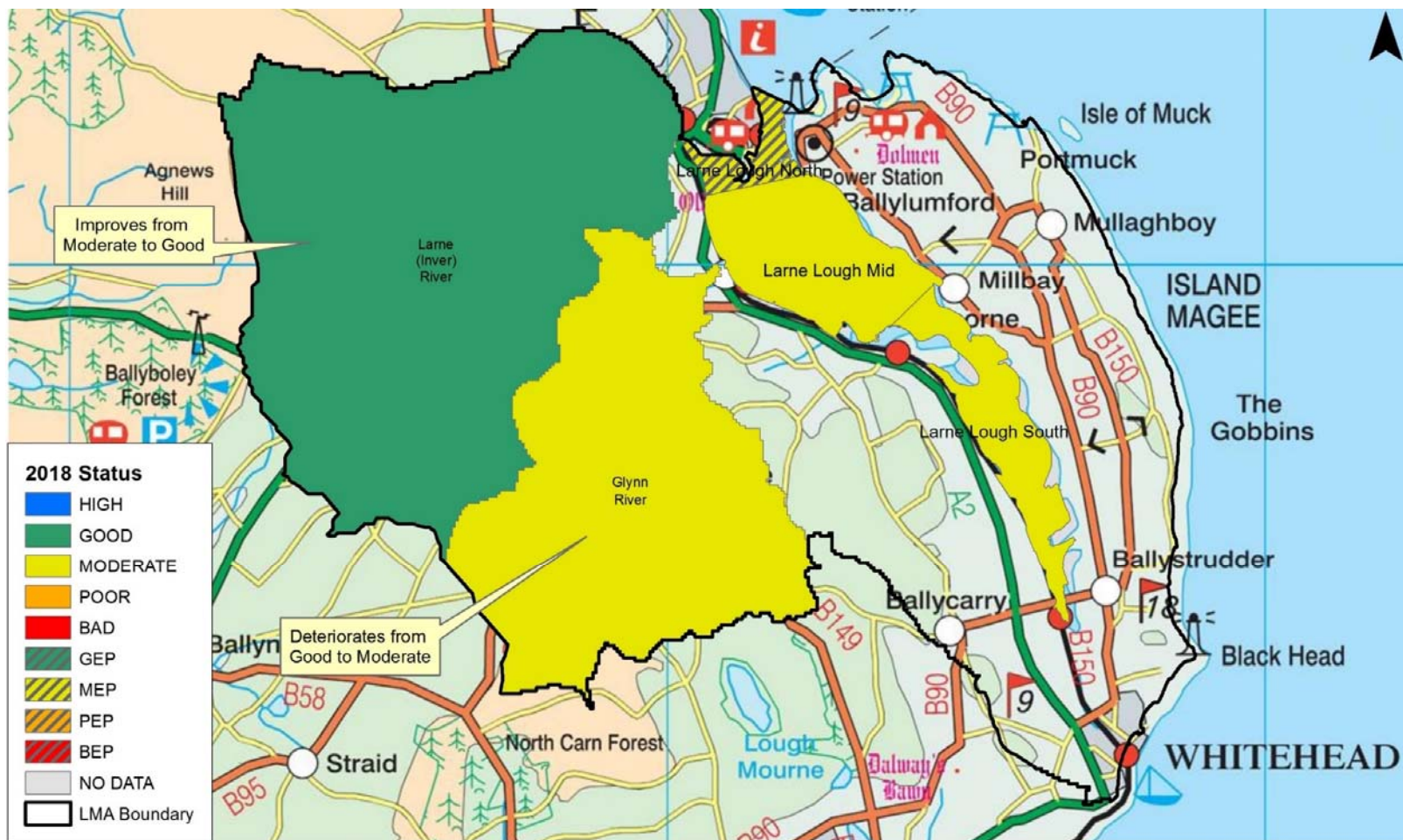
Fish

Maiden Islands



macrophytes

Larne Lough LMA – Two changed; one improved, one declined



Larne (Inver) River



Fish

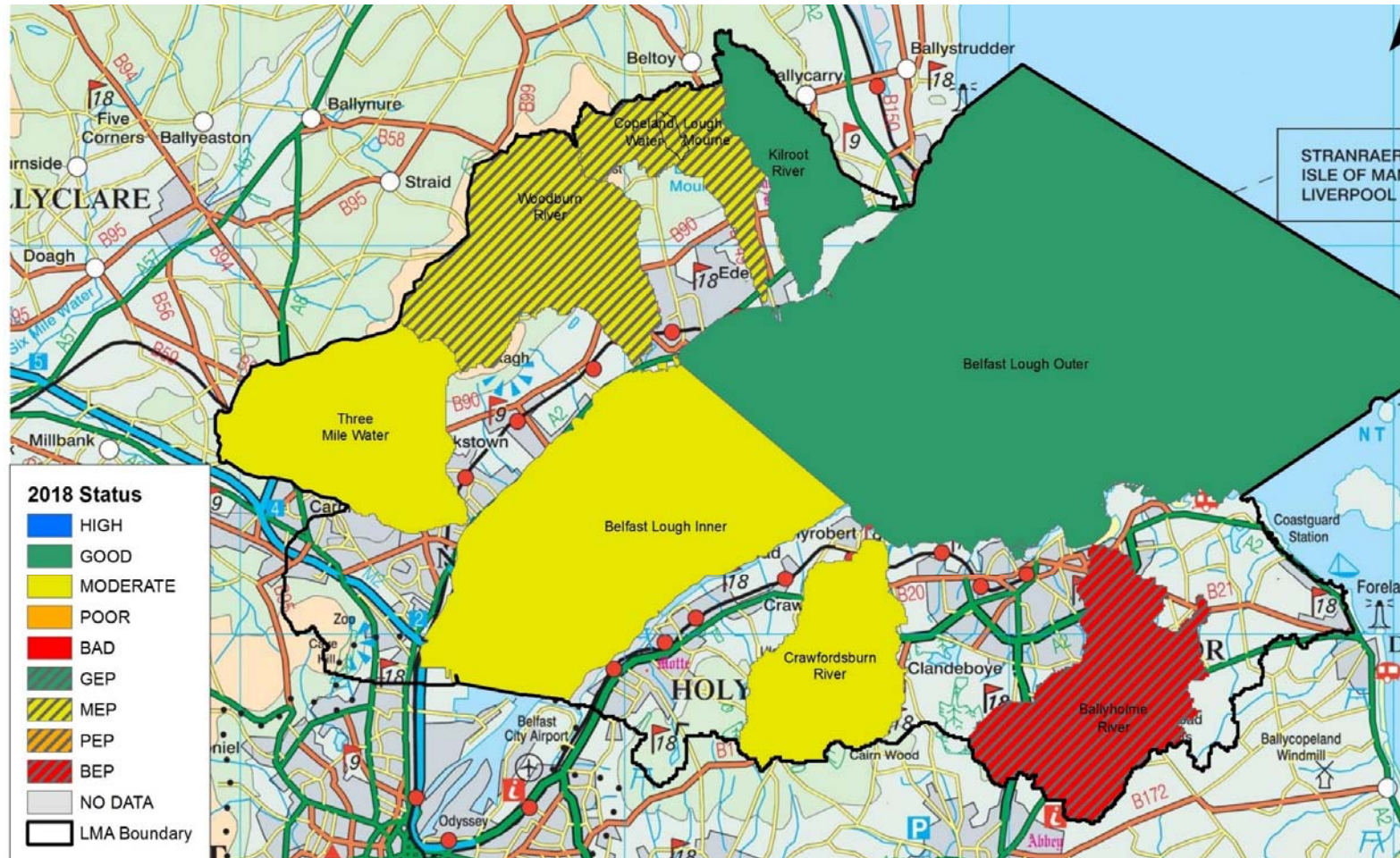
Glynn River

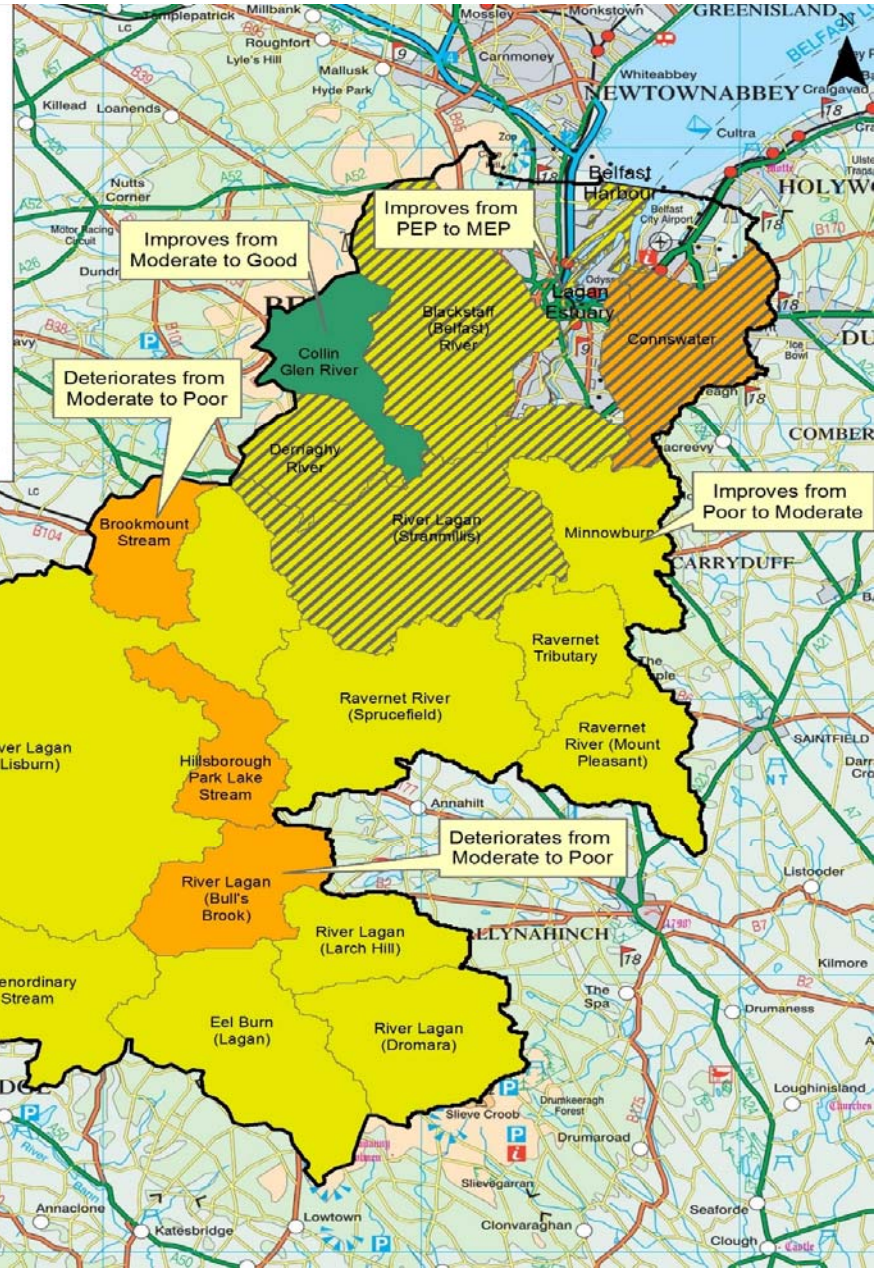


SRP

Belfast Lough LMA

- No change

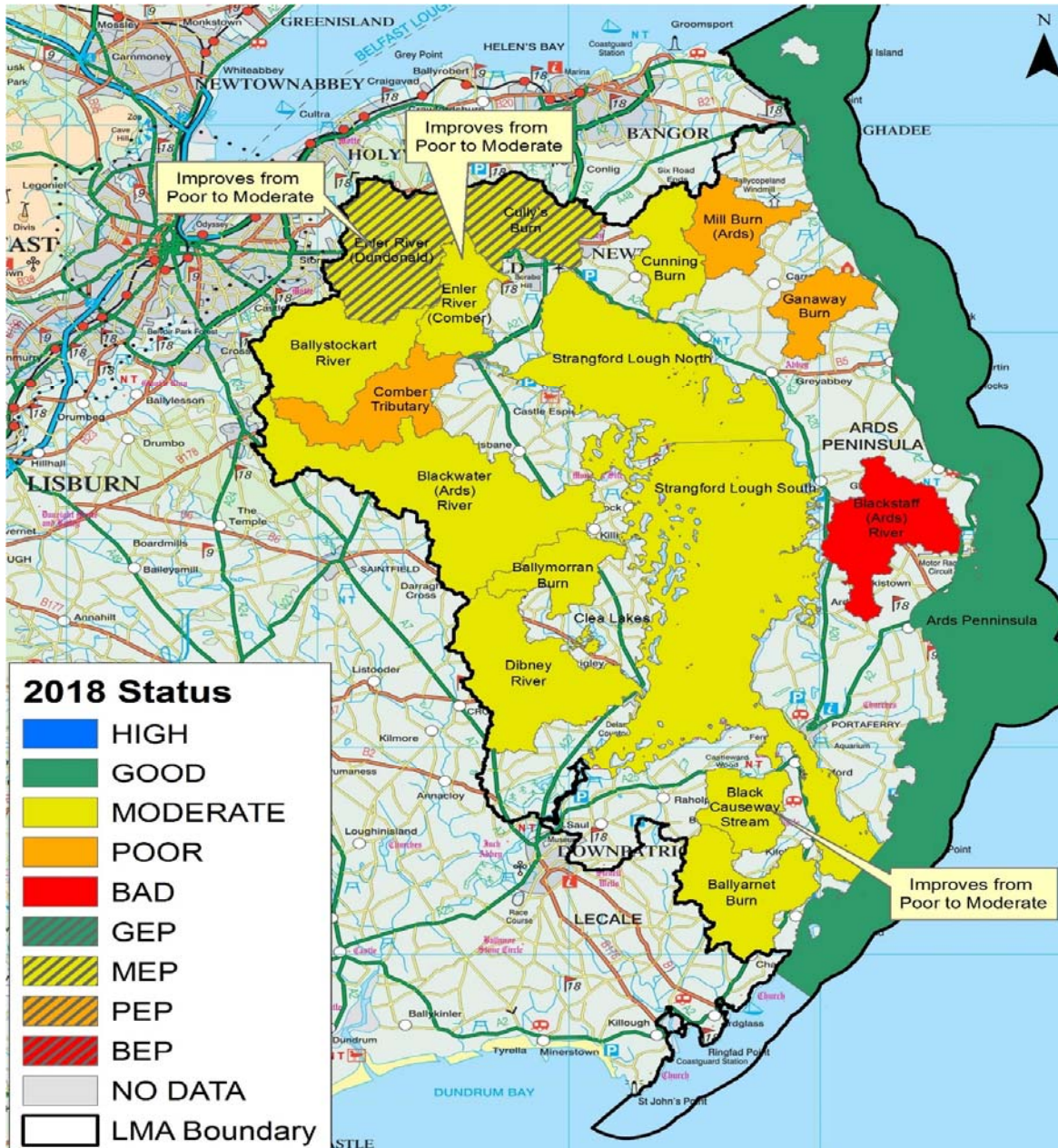




Lagan LMA

- Five changed; 3 improved, 2 declined

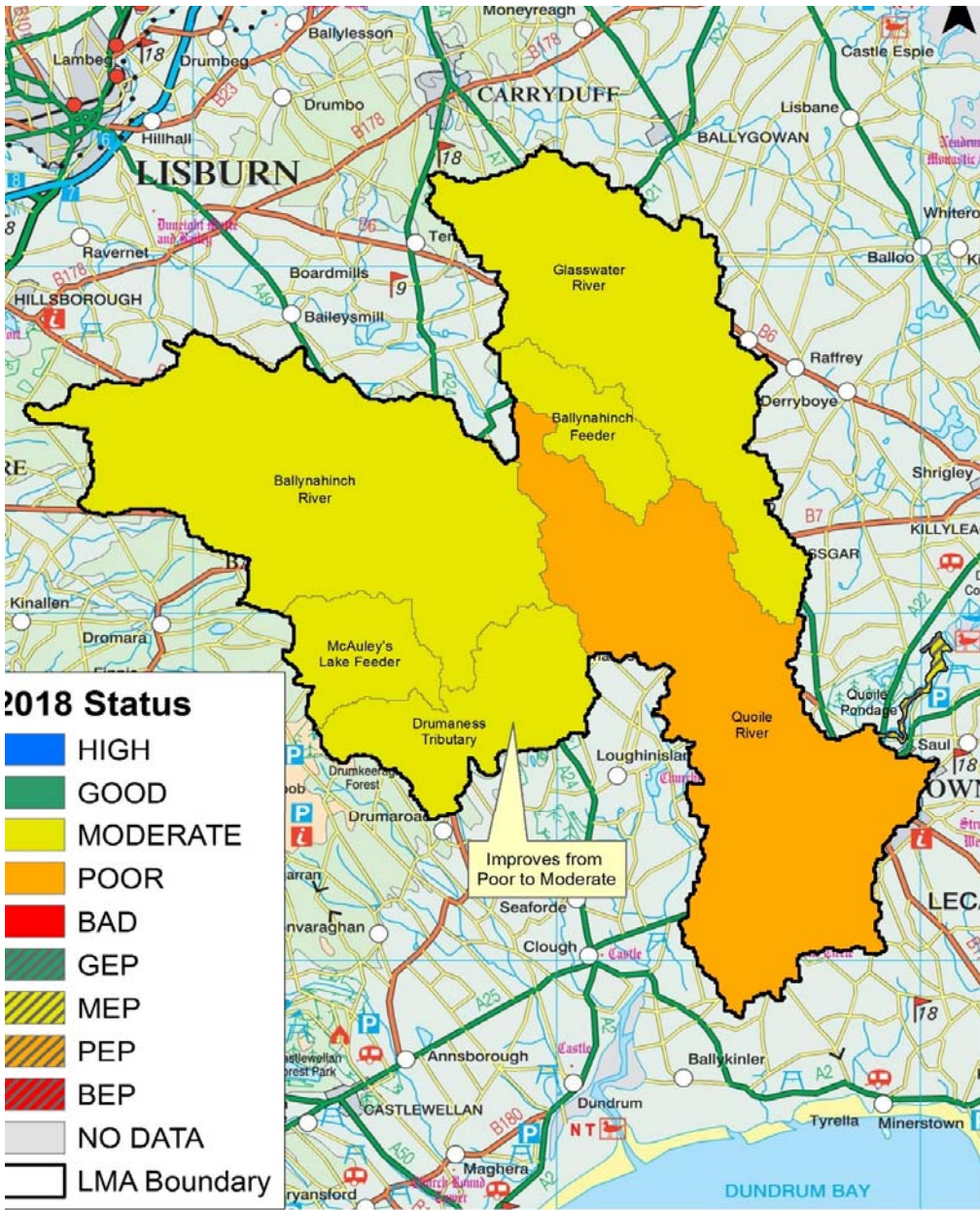
Collin Glen River	↑	Macrophytes
Minnowburn	↑	Inverts
Brookmount Stream	↓	Inverts and Ammonia
River Lagan (Bull's Brook)	↓	Inverts and Ammonia
Lagan Estuary	↑	Phytobenthos



Strangford LMA

- Three changed, all improved

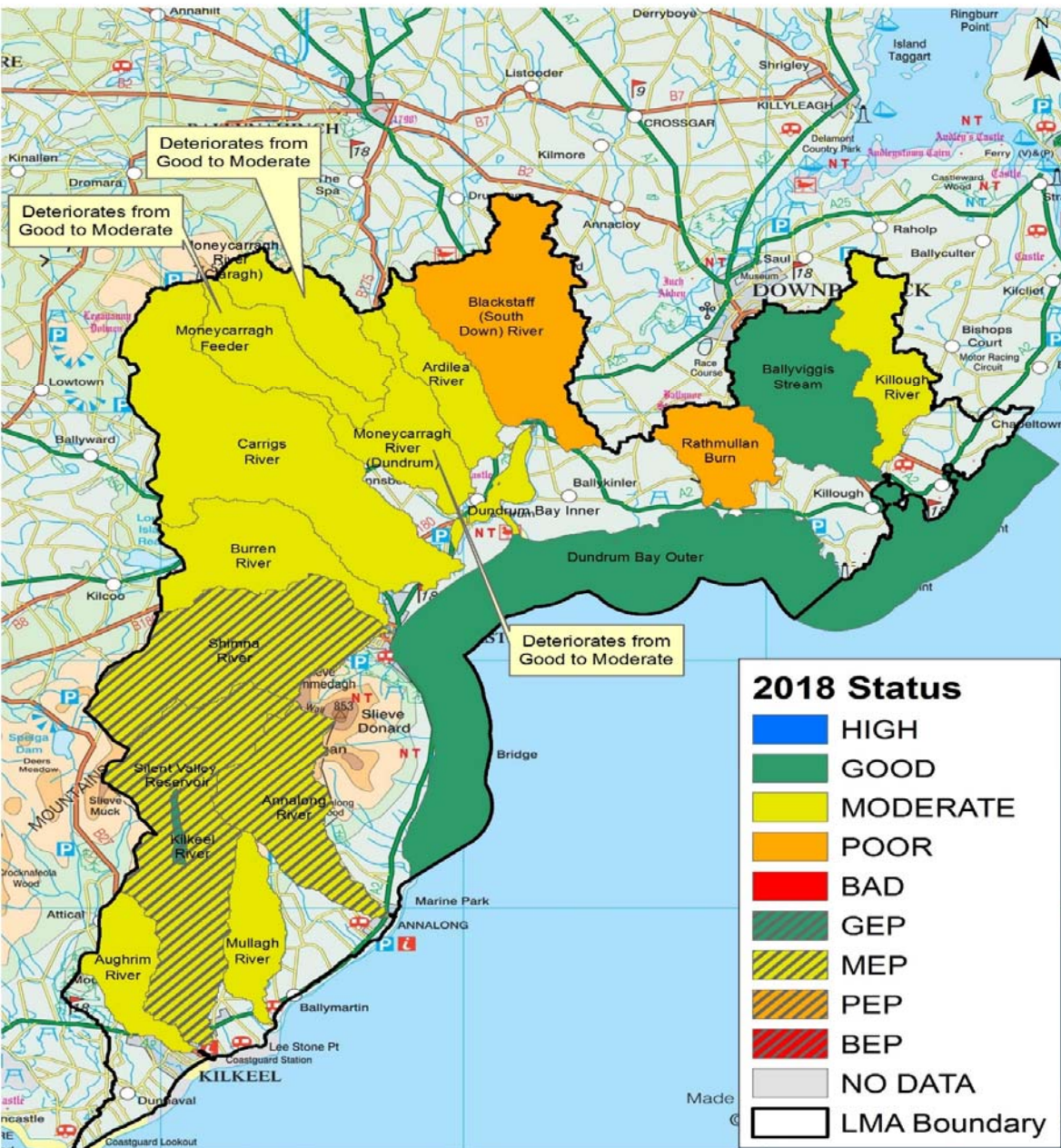
Black Causeway Stream	↑	Inverts
Enler River (Comber)	↑	Inverts and Fish
Enler River (Dundonald)	↑	Inverts and Fish



Quoilé LMA

- One change - improved





South Down LMA

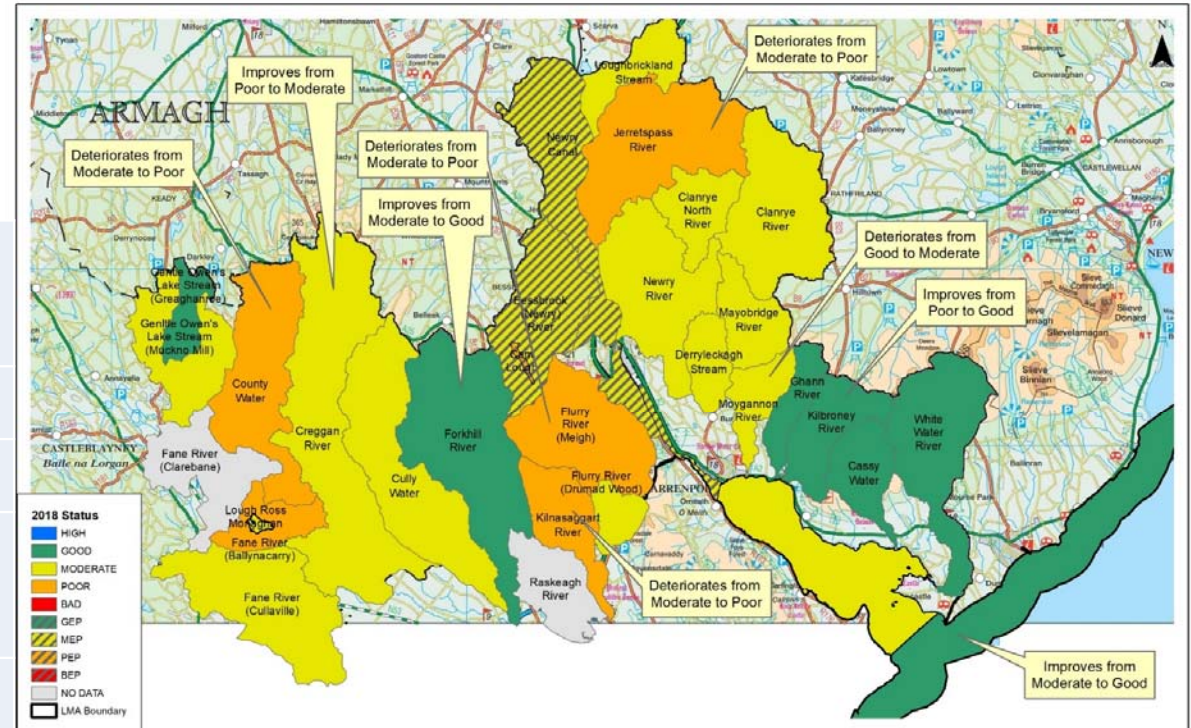
- Three changed, all declined

Moneycarragh Feeder	↓	SRP
Moneycarragh River (Dundrum)	↓	Zinc
Moneycarragh River (Claragh)	↓	Zinc

Carlingford and Newry LMA

- Nine water bodies have changed; 5 have declined, 4 have improved.

Jerretspass River	↓	Fish, Diatoms, DO, SRP
Moygannon River	↓	SRP, Diatoms Inverts
Kilbroney River	↑	Fish, Diatoms
Kilnasaggart River	↓	ROI data
County Water	↓	ROI data
Creggan River	↑	Macrophytes
Flurry River (Meigh)	↓	ROI data
Forkhill River	↑	Diatoms and Macrophytes



Carlingford and Newry LMA
2018 Interim Status

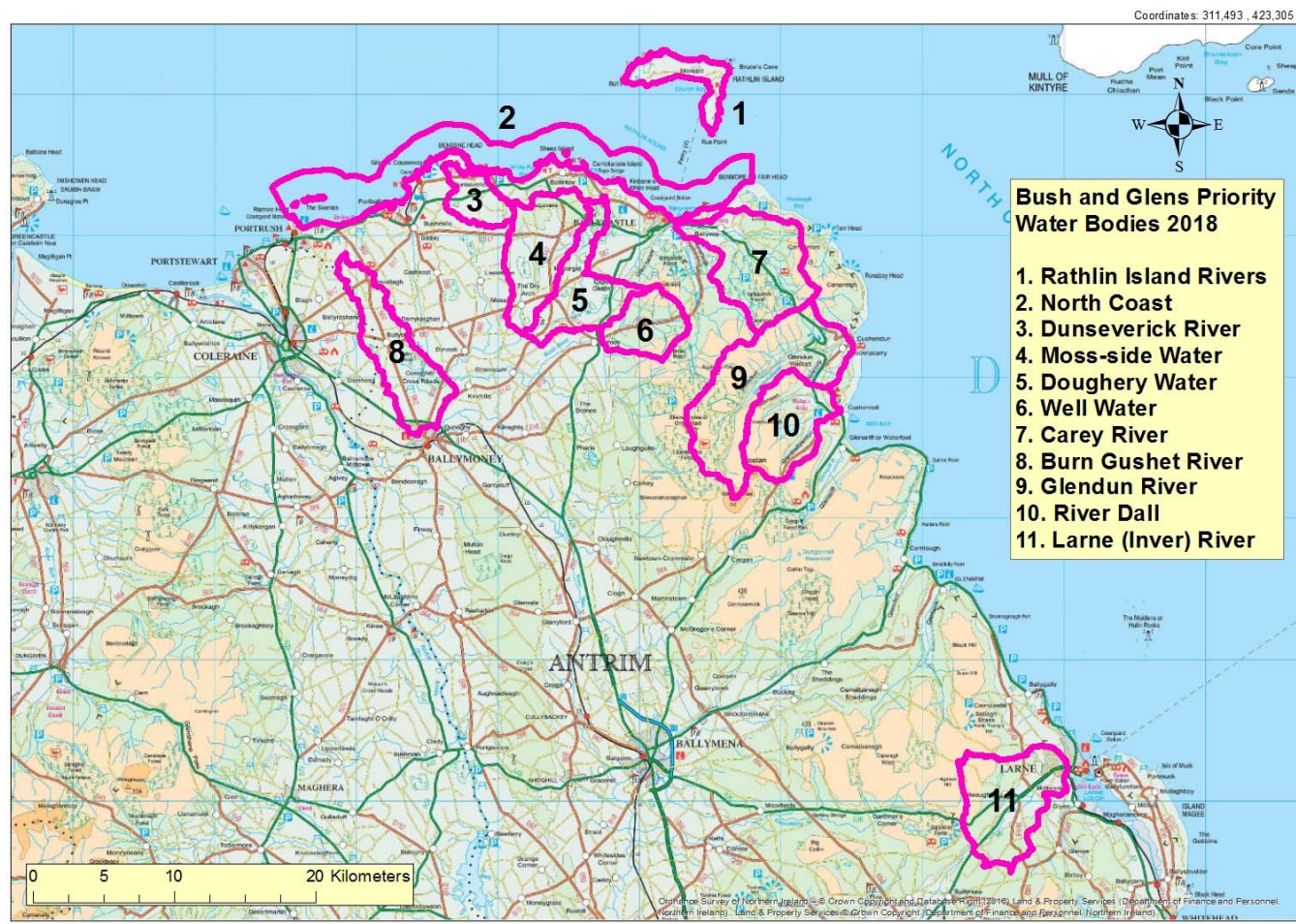
0 4.25 8.5 km

NIEA Northern Ireland
Environment
Agency

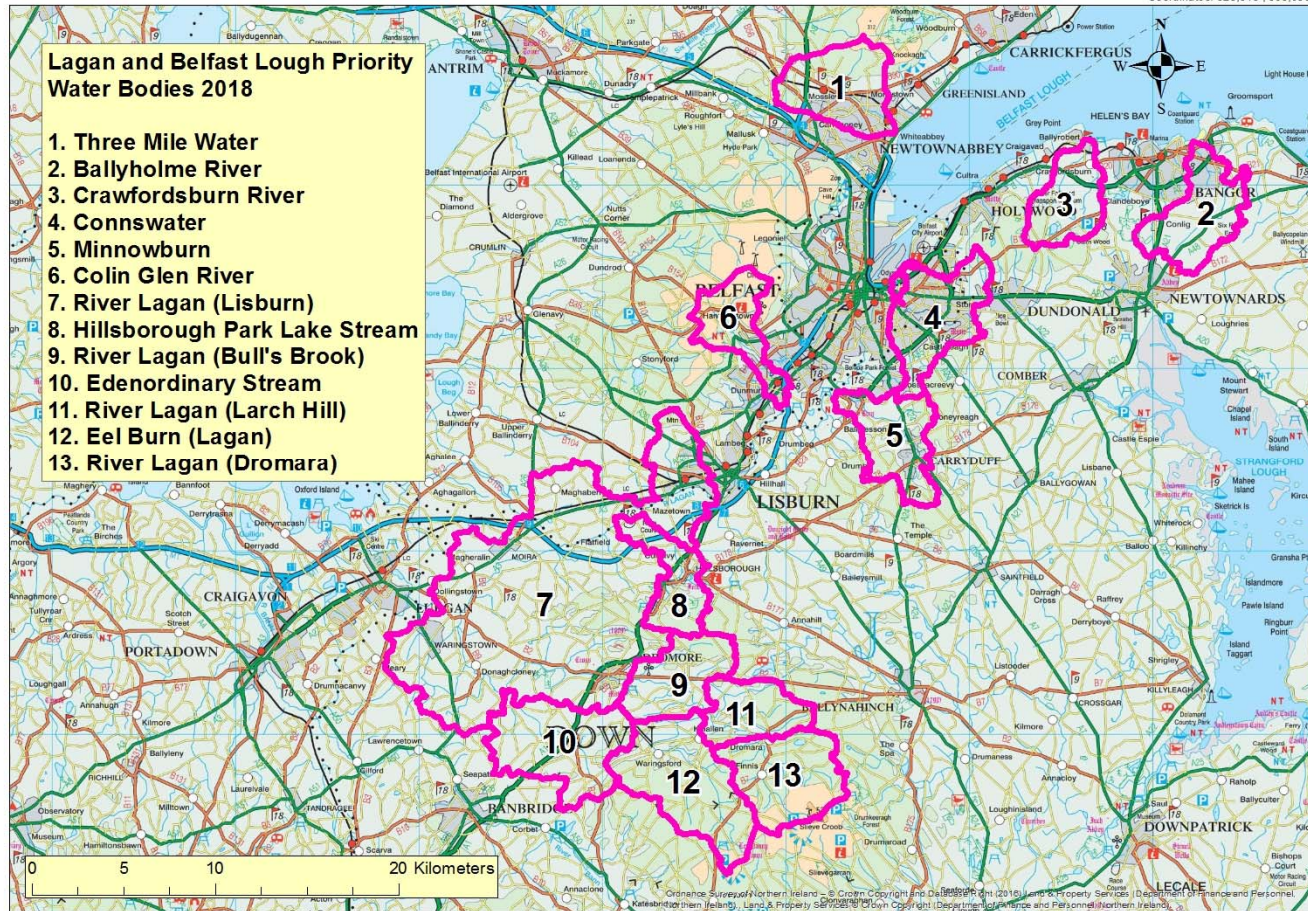
An Agency within the Department of
**Agriculture, Environment
and Rural Affairs**
www.dema-ni.gov.uk

This is based upon Crown Copyright and is reproduced with the permission of Land & Property Services under delegated authority from the Controller of Her Majesty's Stationery Office.
© Crown copyright and database right 2018 EMOU206.2
Unauthorized reproduction infringes © Crown copyright and may lead to prosecution or civil proceedings

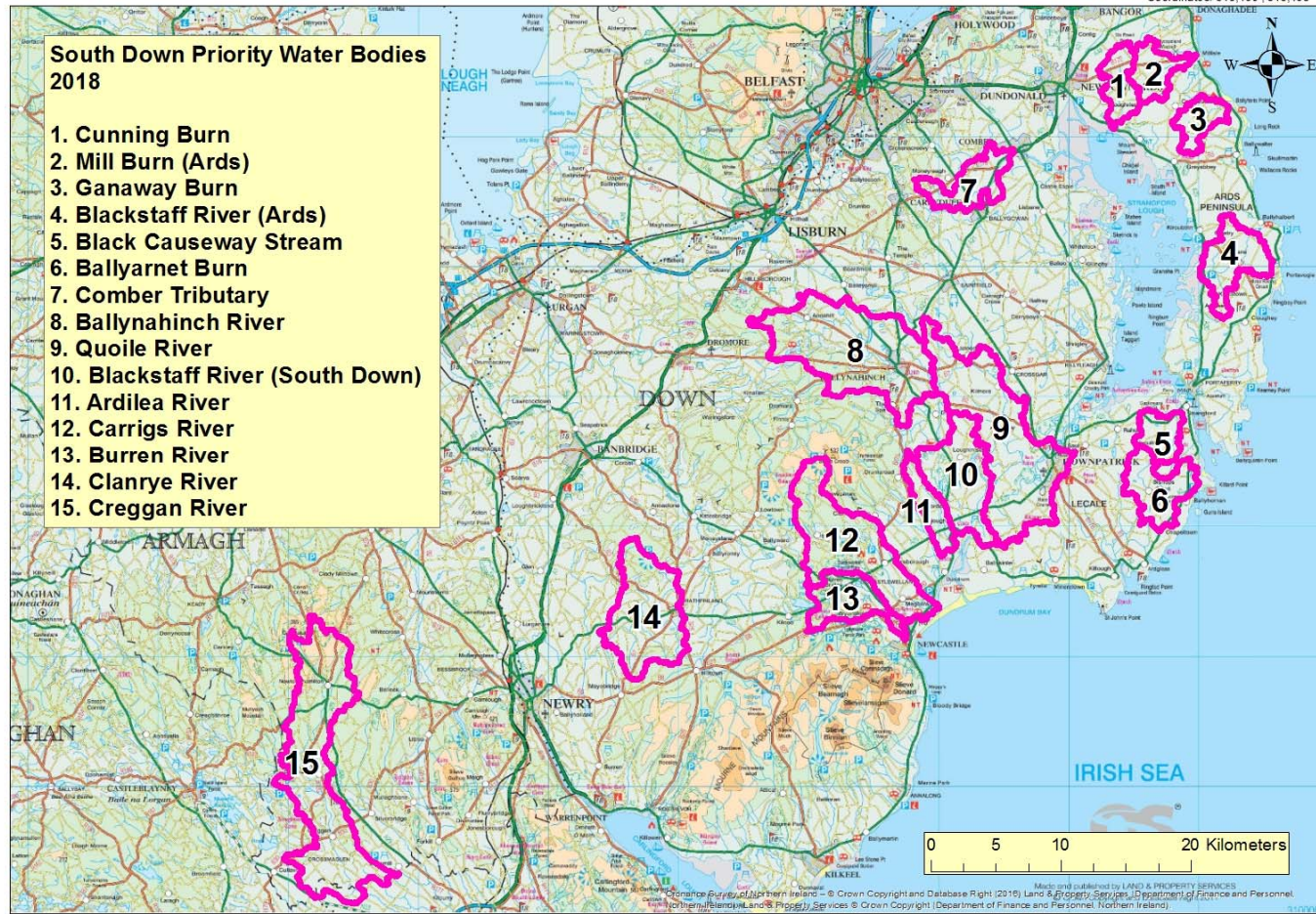
Catchment Team role in meeting 2021 objectives



A living, working, active landscape valued by everyone.



A living, working, active landscape valued by everyone.



A living, working, active landscape valued by everyone.

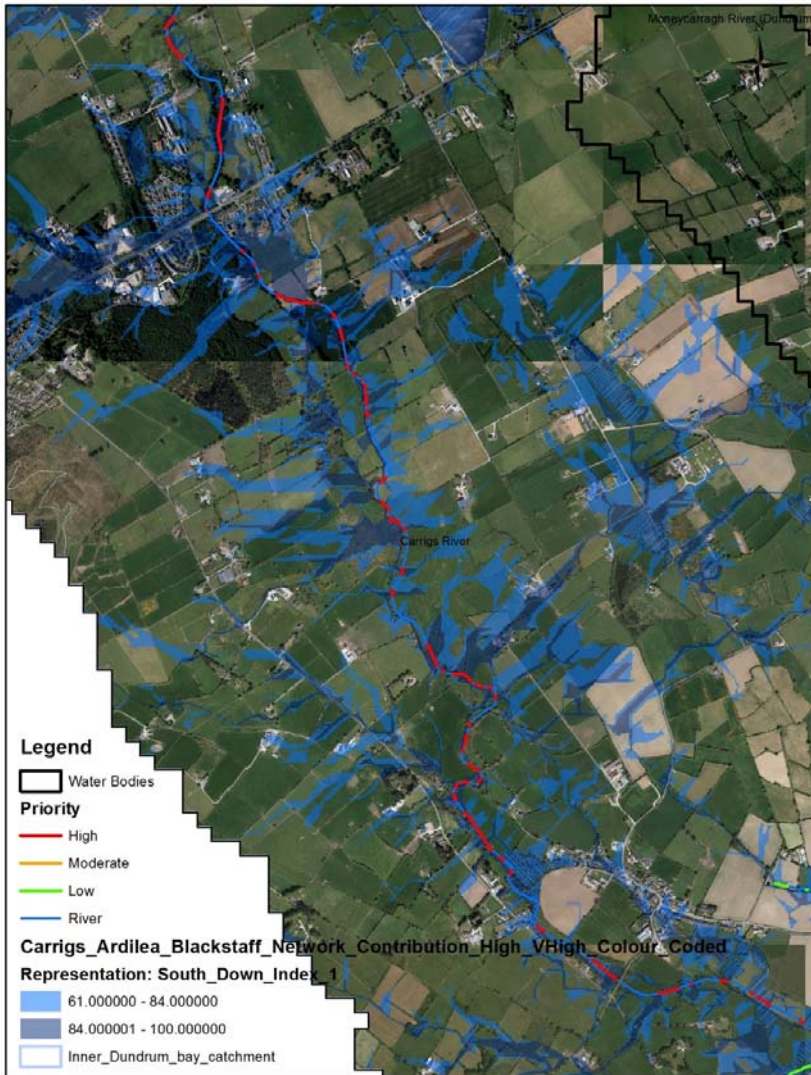
Example of work programme The Carrigs River



Water Body Name	2015 Failing Element	2015 Status	2021 Objective	Proposed / requested actions	Action By
Carrigs River (Dundrum Bay project)	SRP	MODERATE	GOOD	Desktop study mapping possible cattle access points Ground truth desktop study Communicate findings with Dundrum Bay working Group	CMO CMO CMO

A living, working, active landscape valued by everyone.

Dundrum Inner Bay Potential riverbank poaching priority areas



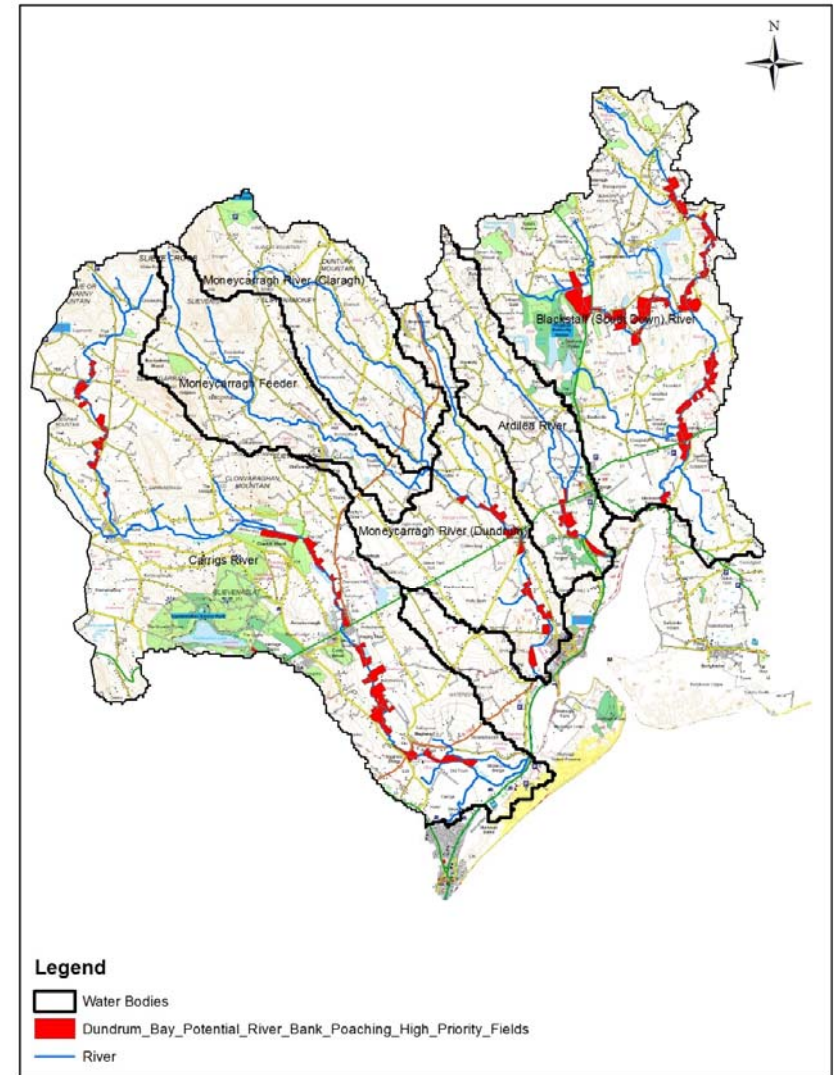
0 0.075 0.15 0.3 0.45 0.6 Kilometers

This is based upon Crown Copyright and is reproduced with the permission of Land & Property Services under delegated authority from the Controller of Her Majesty's Stationery Office. © Crown copyright and database right 2018. EM030005.2

Unauthorized reproduction infringes © Crown copyright and may lead to prosecution or civil proceedings.

NIEA Northern Ireland Environment Agency

Dundrum Inner Bay Potential riverbank poaching priority areas



0 0.5 1 2 3 4 Kilometers

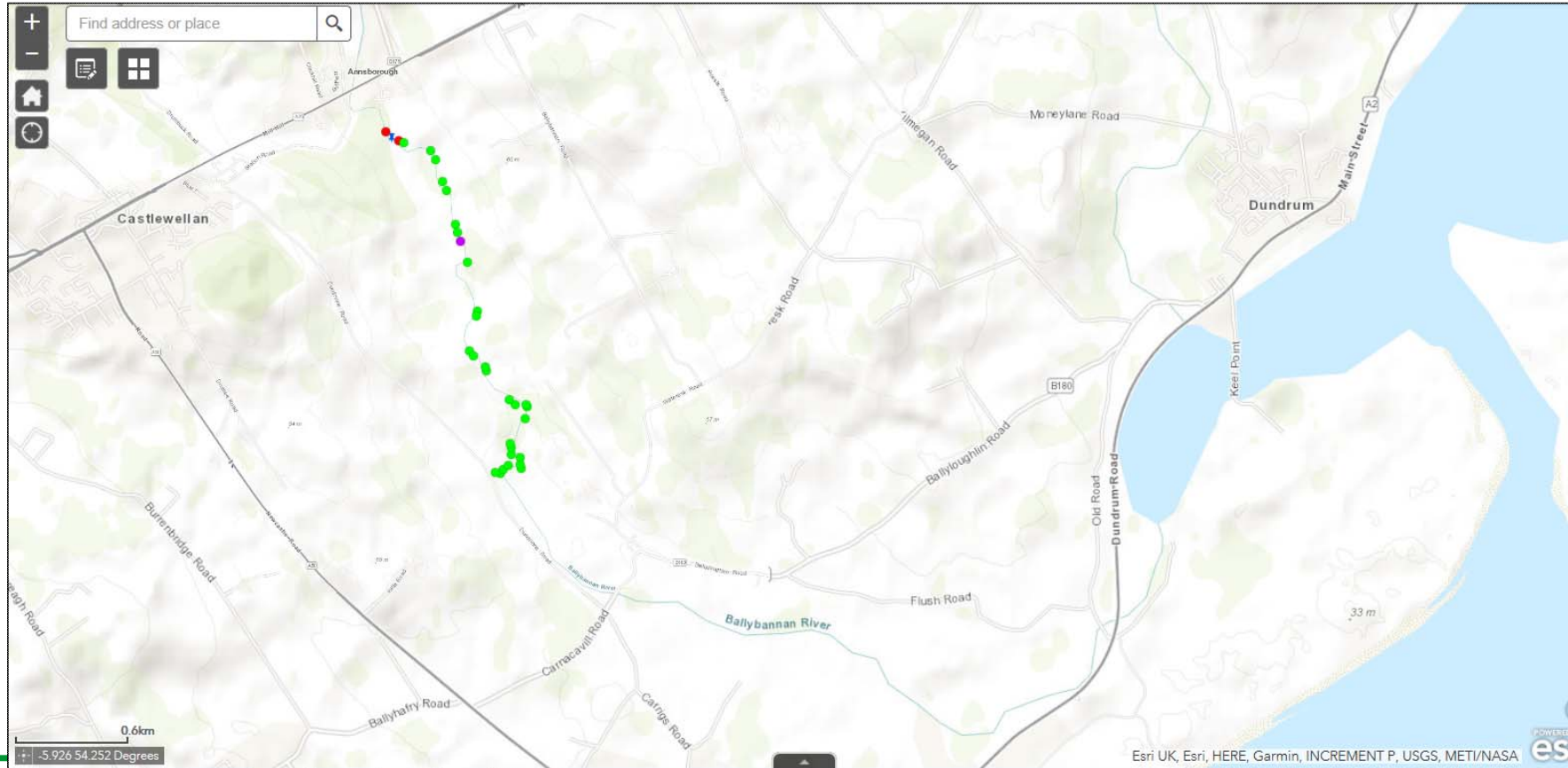
This is based upon Crown Copyright and is reproduced with the permission of Land & Property Services under delegated authority from the Controller of Her Majesty's Stationery Office. © Crown copyright and database right 2018. EM030005.2

Unauthorized reproduction infringes © Crown copyright and may lead to prosecution or civil proceedings.

NIEA Northern Ireland Environment Agency

g, active landscape v.

Example River Walk



A living, working, active landscape valued by everyone.

Outcomes from River Walks.....



A living, working, active landscape valued by everyone.

Interreg



EUROPEAN UNION

Northern Ireland - Ireland - Scotland

SWELL (Shared Waters Enhancement and Loughs Legacy)

To improve water quality within the shared waters of Carlingford Lough and Lough Foyle. This project will include enhancement of water infrastructure. €30 million total; €5.29 million to NIW/IW.

SWIM (System for bathing Water Quality Modelling)

To enable short-term pollution to be predicted using a bathing water prediction model. €1.2million total. UCD is the lead in ROI and AFBI in NI.

Water Catchment Partnership

Partnership between a range of environmental bodies

Spreading the word on safe pesticide use near water

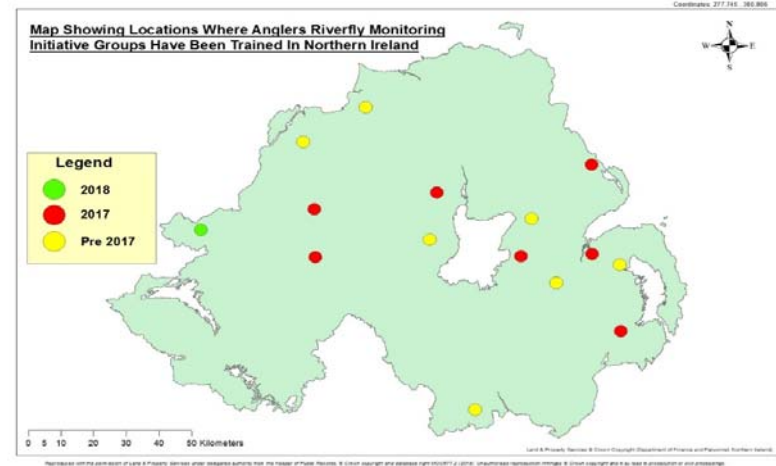
Engagement methods include:

- Attendance at agricultural shows
- Demonstration events
- Distribution of literature
- Rush spraying for farmers



A living, working, active landscape valued by everyone.

Citizen science



Anglers Riverfly Monitoring Initiative (ARMI) is a community scheme where Rivers Trusts fishing clubs and interested parties monitor invertebrates to assess the biological water quality of their local river. NIEA staff support training events and trigger level settings for these groups.

Workshops

- Workshops are after tea / coffee.
- The workshops are focused on the Lagan and South Down. We will look at the reasons behind why the status in these rivers are changing, and explore if the group has any insight as to why these changes are happening.

