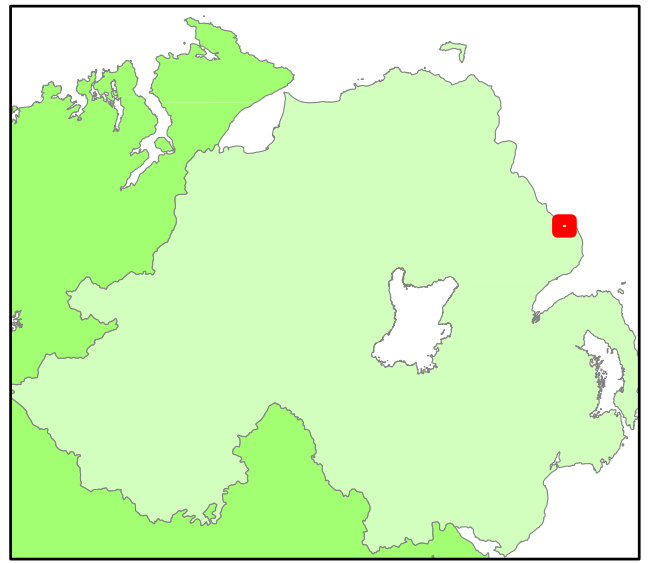


- A Proposed Approximate Cavern Locations**
- B Sea Water Intake**
- C Brine Outfall Discharge Point**
- D Wellpad**
- E Sea Water and Brine Pumping Station**
- F Main Gas Plant Facility**



**Key:**

- Marine Application Area
- Planning Application Area
- Proposed Connecting Pipeline Routes
- Existing Gas Transmission Pipelines



CLIENT  
**ISLANDMAGEE STORAGE LIMITED**

PROJECT  
**ISLANDMAGEE STORAGE PROJECT**

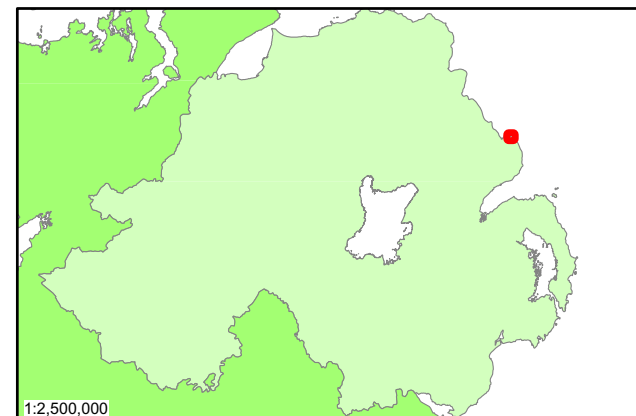
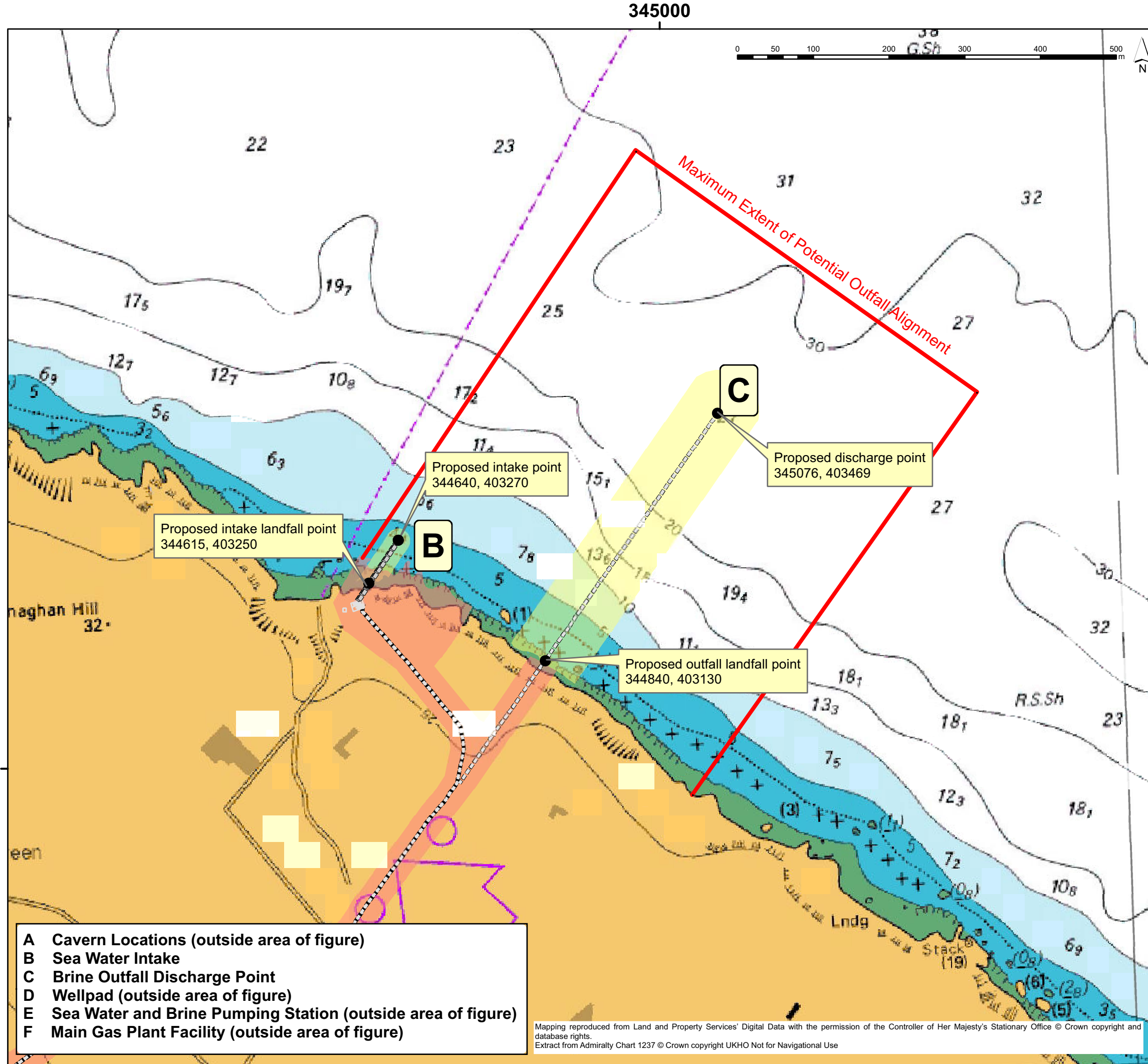
TITLE  
**ATTACHMENT 1:  
LAYOUT OF FACILITIES AND PIPELINES**

**RPS**

ELMWOOD HOUSE  
74 BOUCHER ROAD  
BELFAST BT12 6RZ

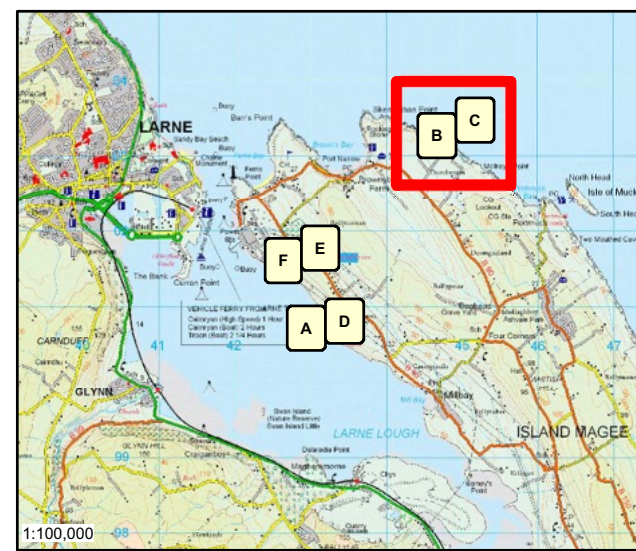
TEL : 028 9066 7914  
FAX : 028 9066 8286  
www.rpsgroup.com/Ireland

<p>Drawing No. : <b>IBE0717_100</b></p>	<p>Drawn By : S.M. Checked By : M.B. Approved By : A.K.B. Date: 02/10/2012 SCALE: 1:12,500 at A3</p>
---	--



**Key:**

- Proposed Connecting Pipeline Routes
- Planning Application Area
- Marine Application Areas



CLIENT  
ISLANDMAGEE STORAGE LIMITED

PROJECT  
ISLANDMAGEE STORAGE PROJECT

TITLE  
LAYOUT OF FACILITIES AND PIPELINES:  
INTAKE AND OUTFALL

**RPS**

ELMWOOD HOUSE  
74 BOUCHER ROAD  
BELFAST BT12 6RZ

TEL : 028 9066 7914  
FAX : 028 9066 8286  
www.rpsgroup.com/Ireland

- A** Cavern Locations (outside area of figure)
- B** Sea Water Intake
- C** Brine Outfall Discharge Point
- D** Wellpad (outside area of figure)
- E** Sea Water and Brine Pumping Station (outside area of figure)
- F** Main Gas Plant Facility (outside area of figure)

Mapping reproduced from Land and Property Services' Digital Data with the permission of the Controller of Her Majesty's Stationary Office © Crown copyright and database rights.  
Extract from Admiralty Chart 1237 © Crown copyright UKHO Not for Navigational Use

Drawing No.: **IBE0717\_201**

Drawn By: S.M.  
Checked By: M.B.  
Approved By: A.K.B.  
Date: 02/10/2012  
SCALE: 1:5,000 at A3