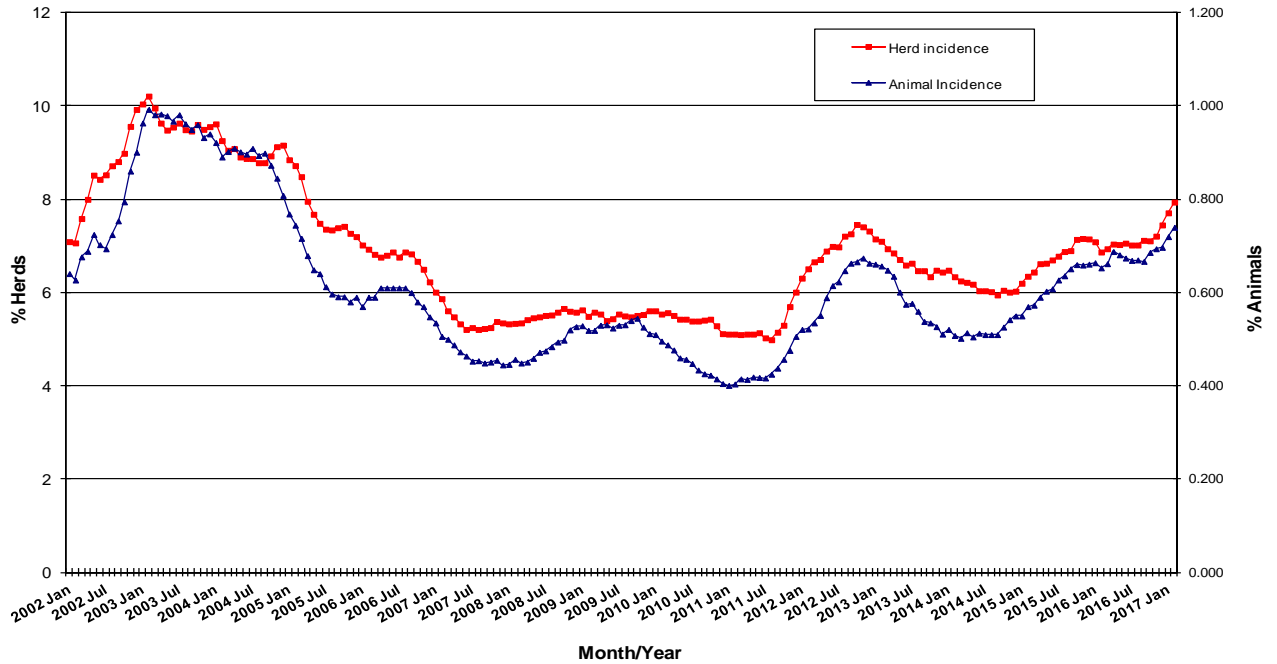


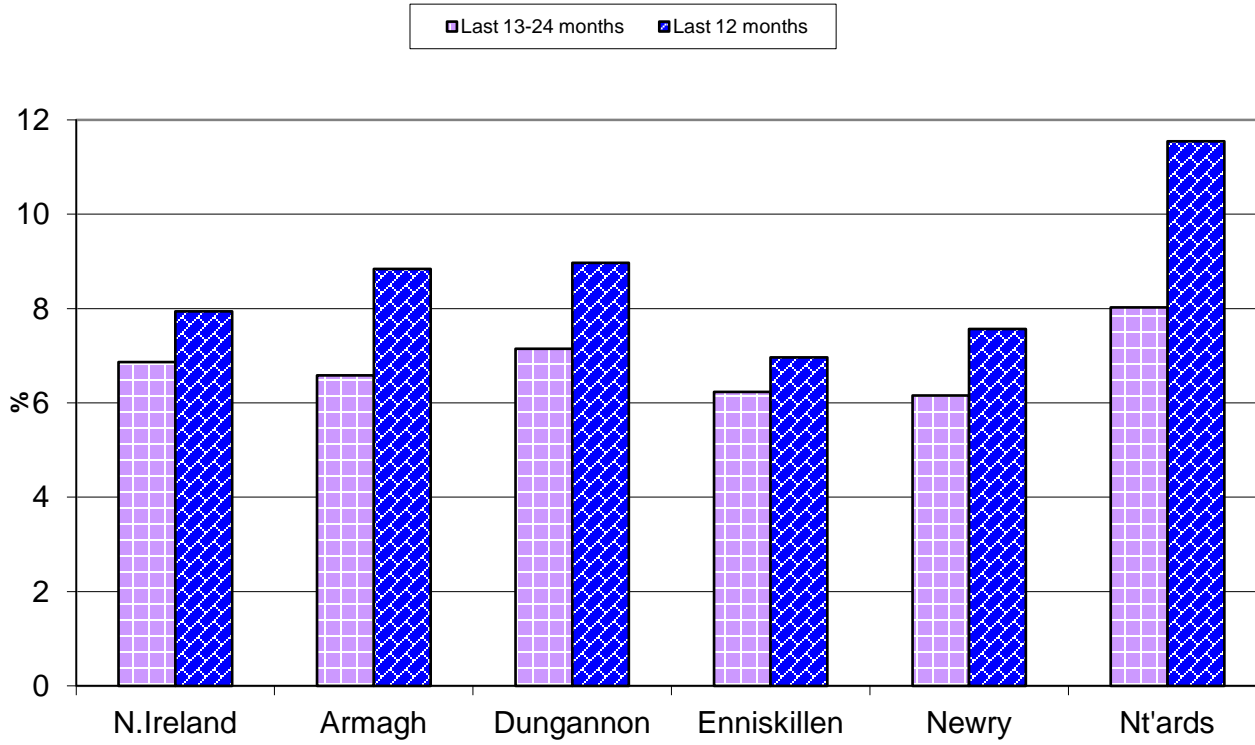
Tuberculosis: Statistics for February 2017

Tests Completed	Herds	Number of herds tested (any test), by DVO	Cumulative Statistics	
		Number of herds with herd-level test, by DVO	Cumulative Statistics	
		Number of herds with any risk test, by DVO		
		Number of herds with herd-level risk test, by DVO		
		Number of herds with herd-level restricted test, by DVO		
	Animals	Total number of tests performed, by DVO	Cumulative Statistics	
		Total number of animals tests, by DVO	Cumulative Statistics	
		Total number of restricted herd tests, by DVO	Number of animals tested	
		Total number of herd tests, by DVO	Number of animals tested	
		Total number of individual tests, by DVO	Number of animals tested	
Total number of animals tested, by DVO				
Summary Statistics	Herds with TB reactors during month, by DVO	Cumulative Statistics	APT	
	Number of new reactor herds, by DVO	Cumulative Statistics	Negative-in-contacts	
	Number of new reactor animals, by DVO		Reactor removal times	
	Herd Prevalance			
	Herd Incidence			
	Animal Incidence			
	Number of reactor animals by month and by DVO			
	Number of new reactor herds by month and by DVO			
	Total number of all reactor herds by DVO			
Summary Charts	Current Animal Incidence Chart	Monthly TB reactors chart	Yearly Confirmed Herd Prevalence	
	Yearly Animal Incidence Chart	New TB reactor herds	Current Confirmed Herd Prevalence	
	Current Herd Incidence Chart	TB Herd & Animal Incidence		
	Yearly Herd Incidence Chart			

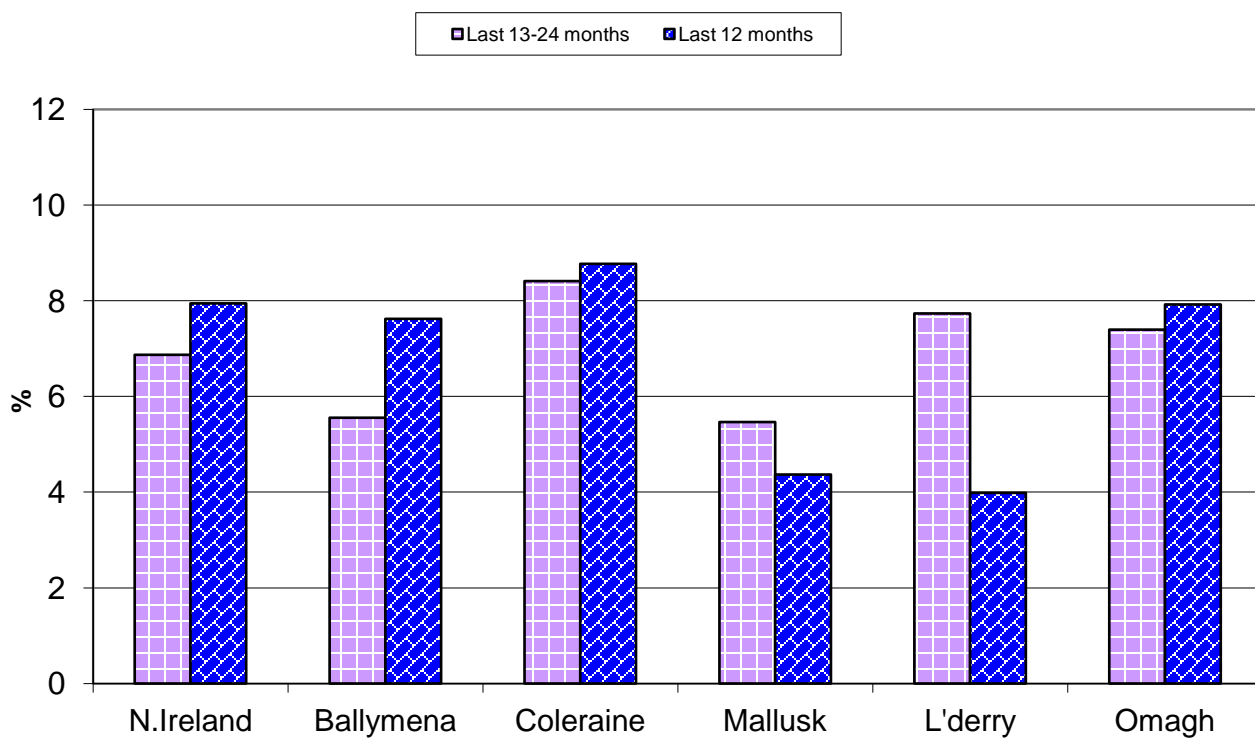
TB Herd and Animal Incidence:
(12 month moving average: January 2002 to February 2017)

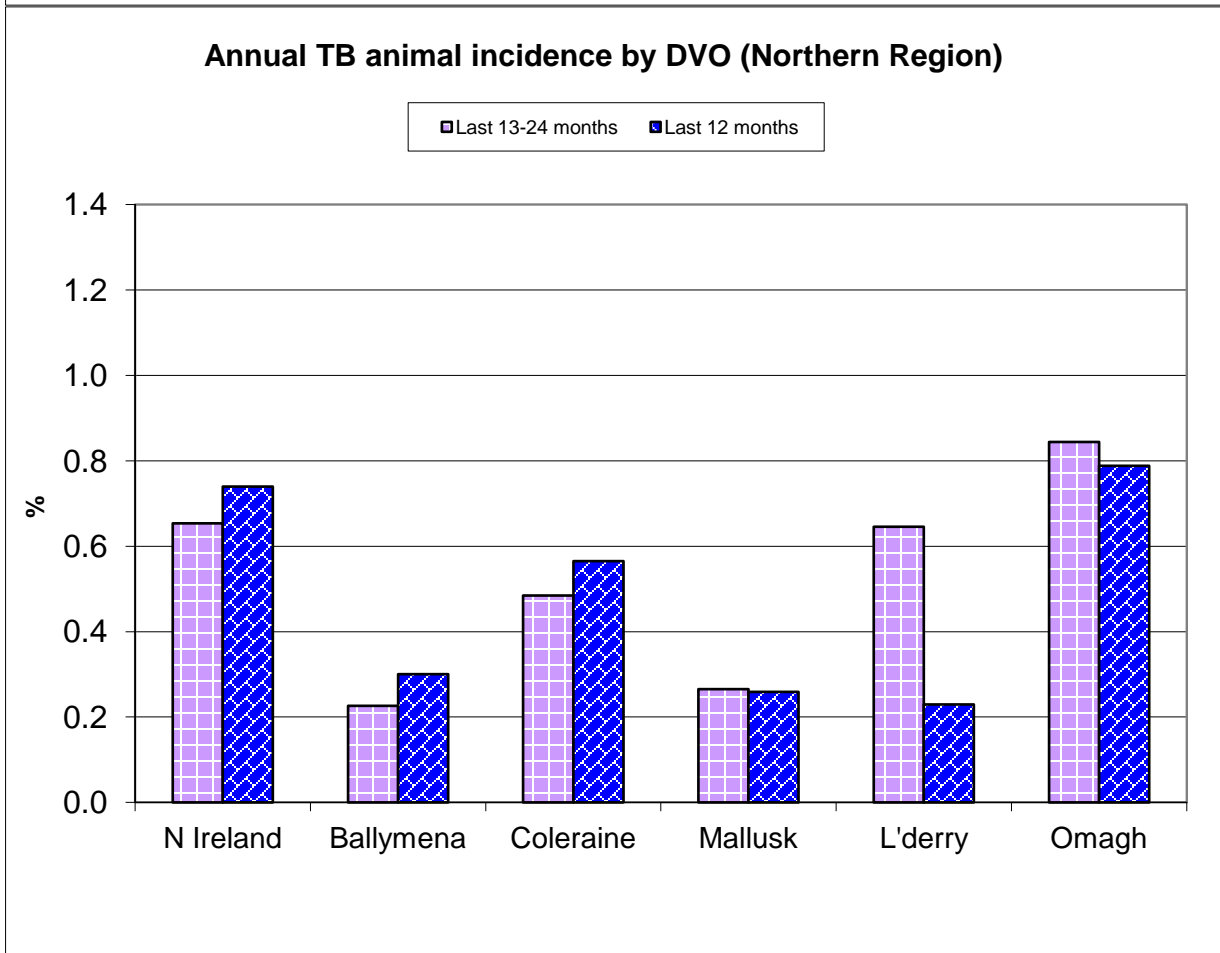
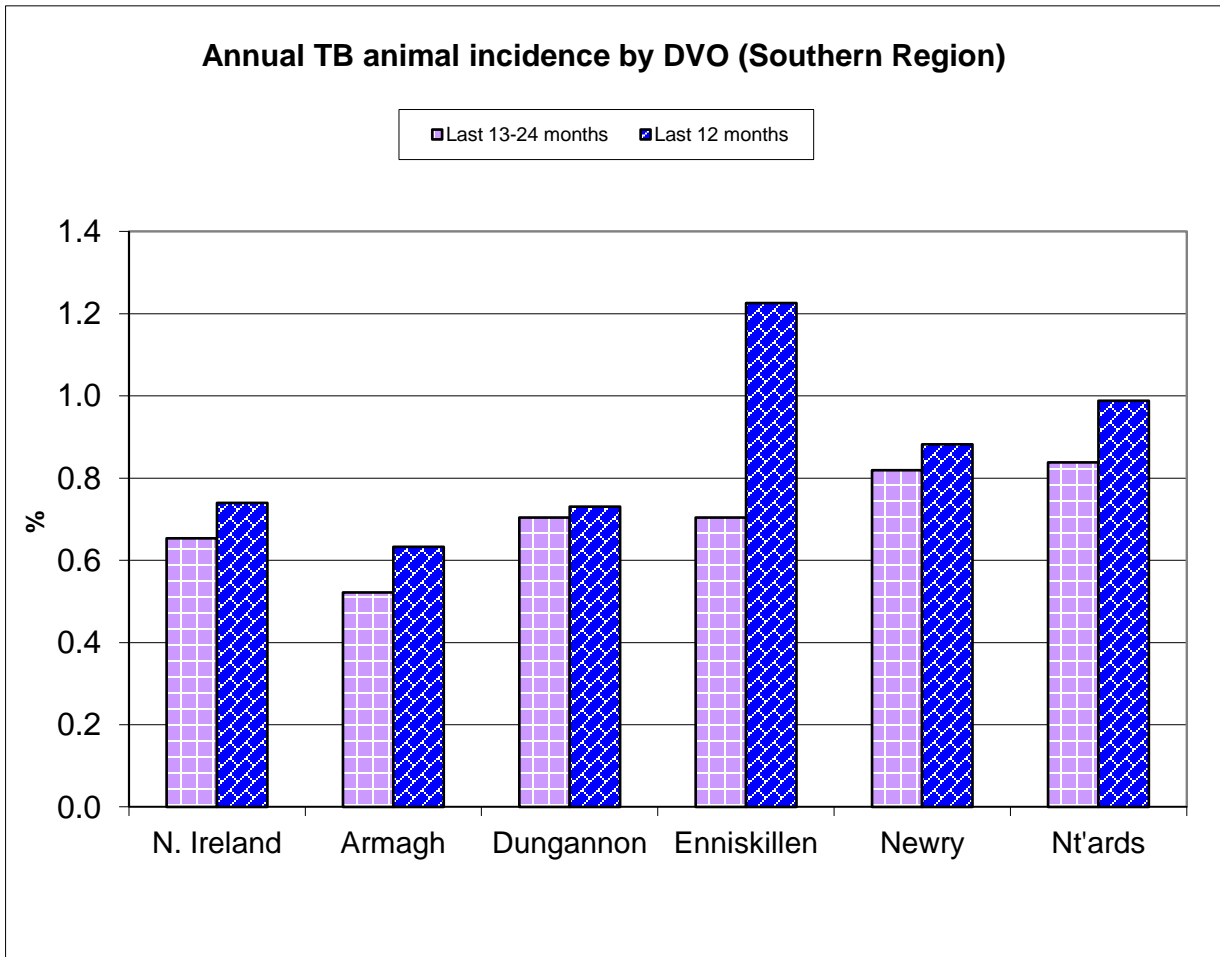


Annual TB herd incidence by DVO (Southern Region)

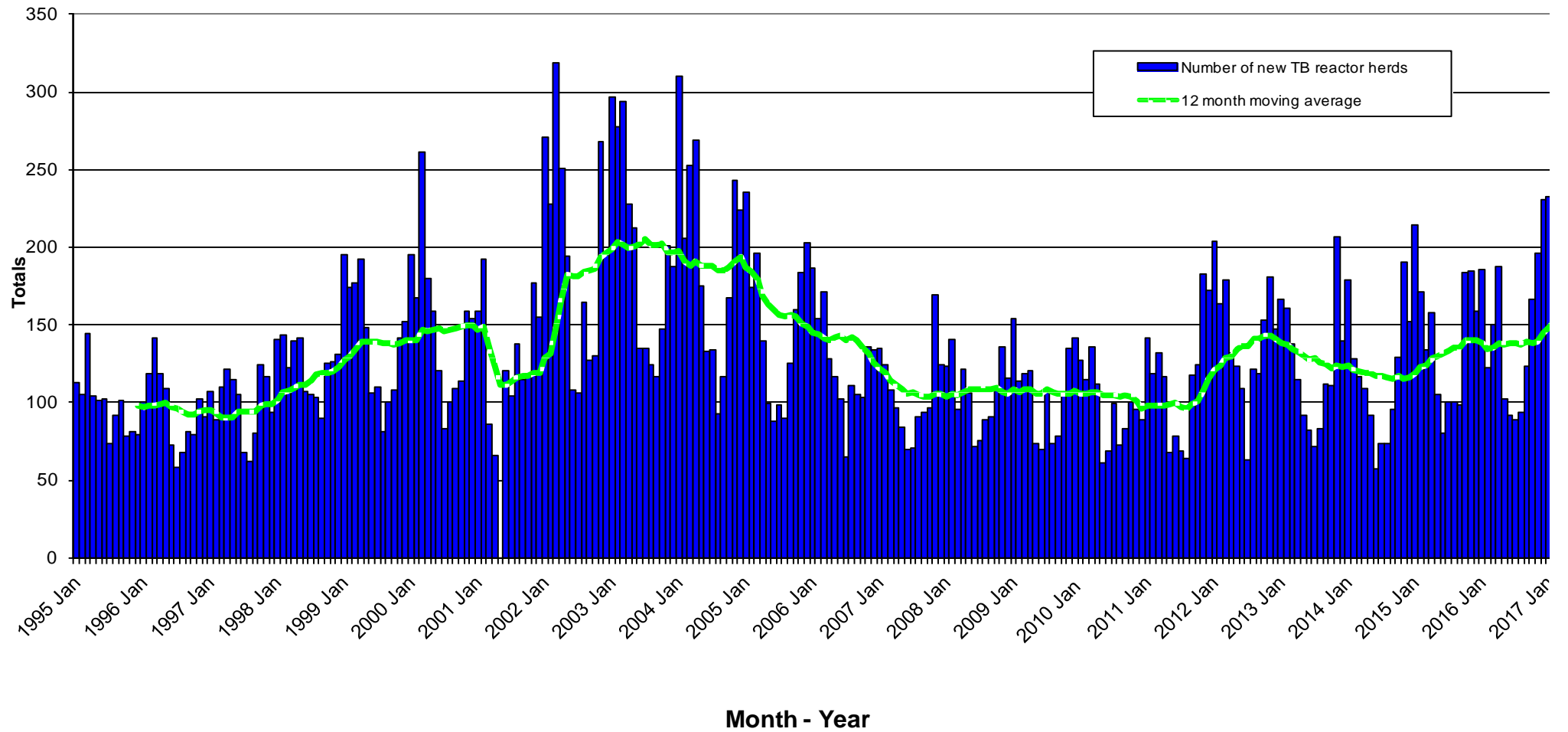


Annual TB herd incidence by DVO (Northern Region)

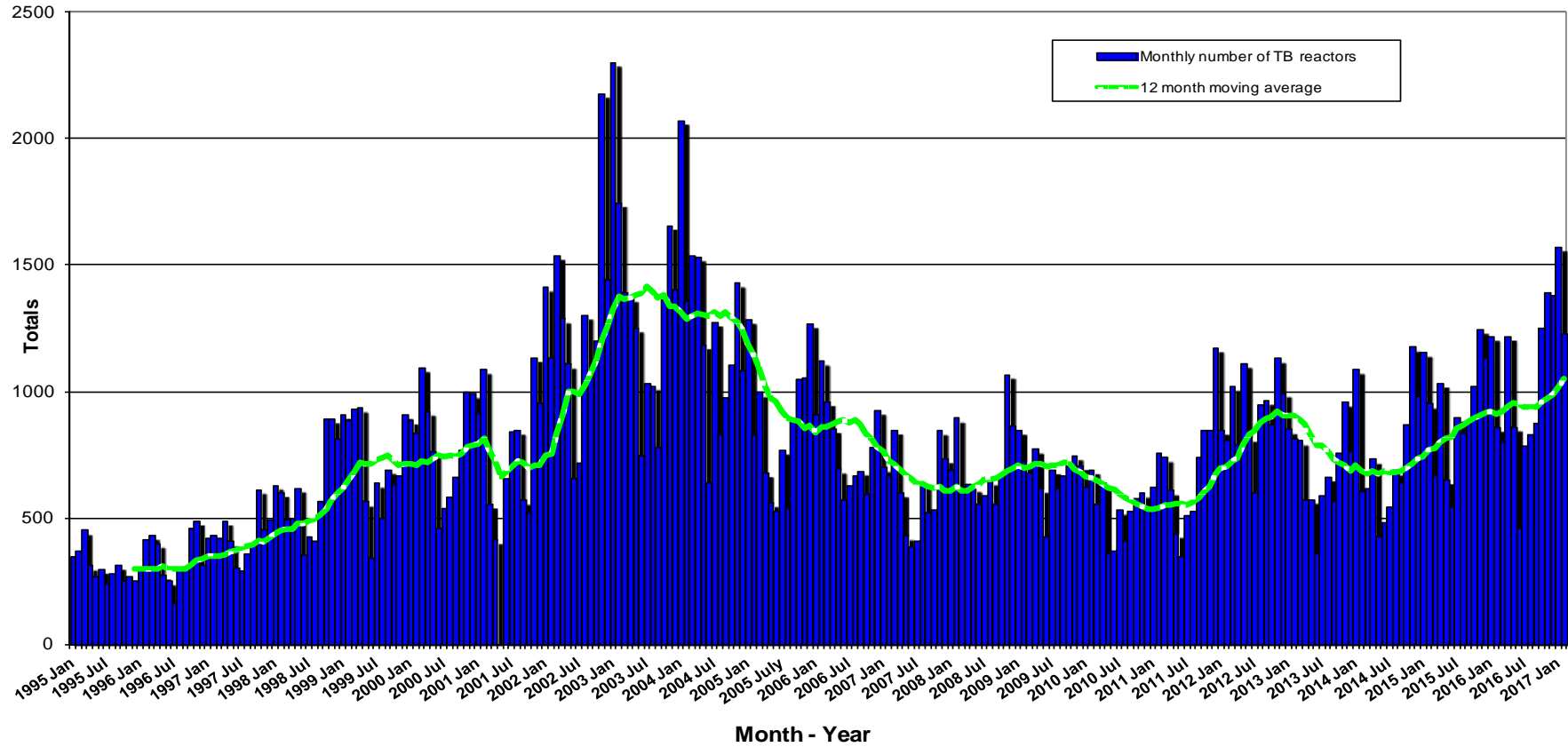


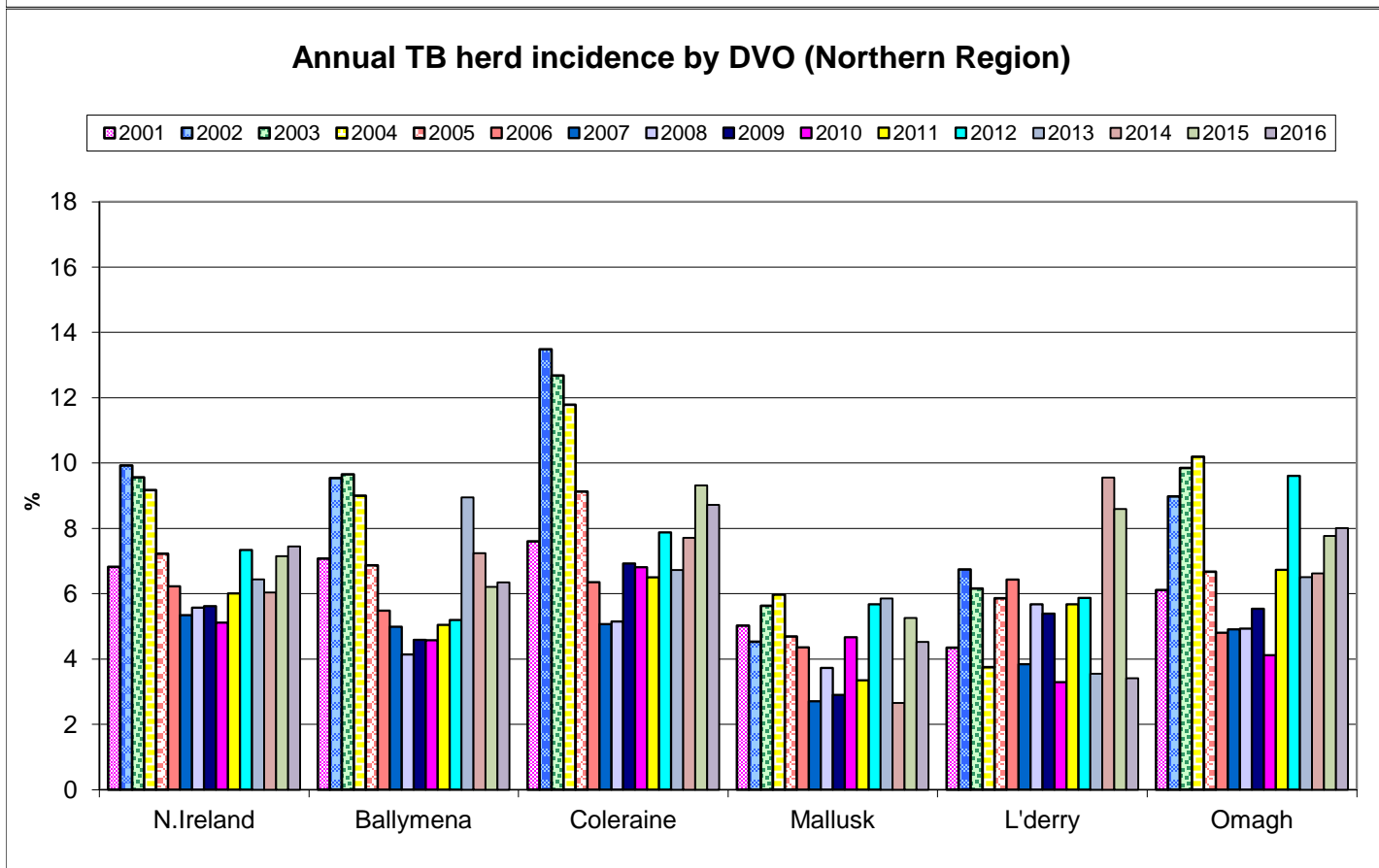
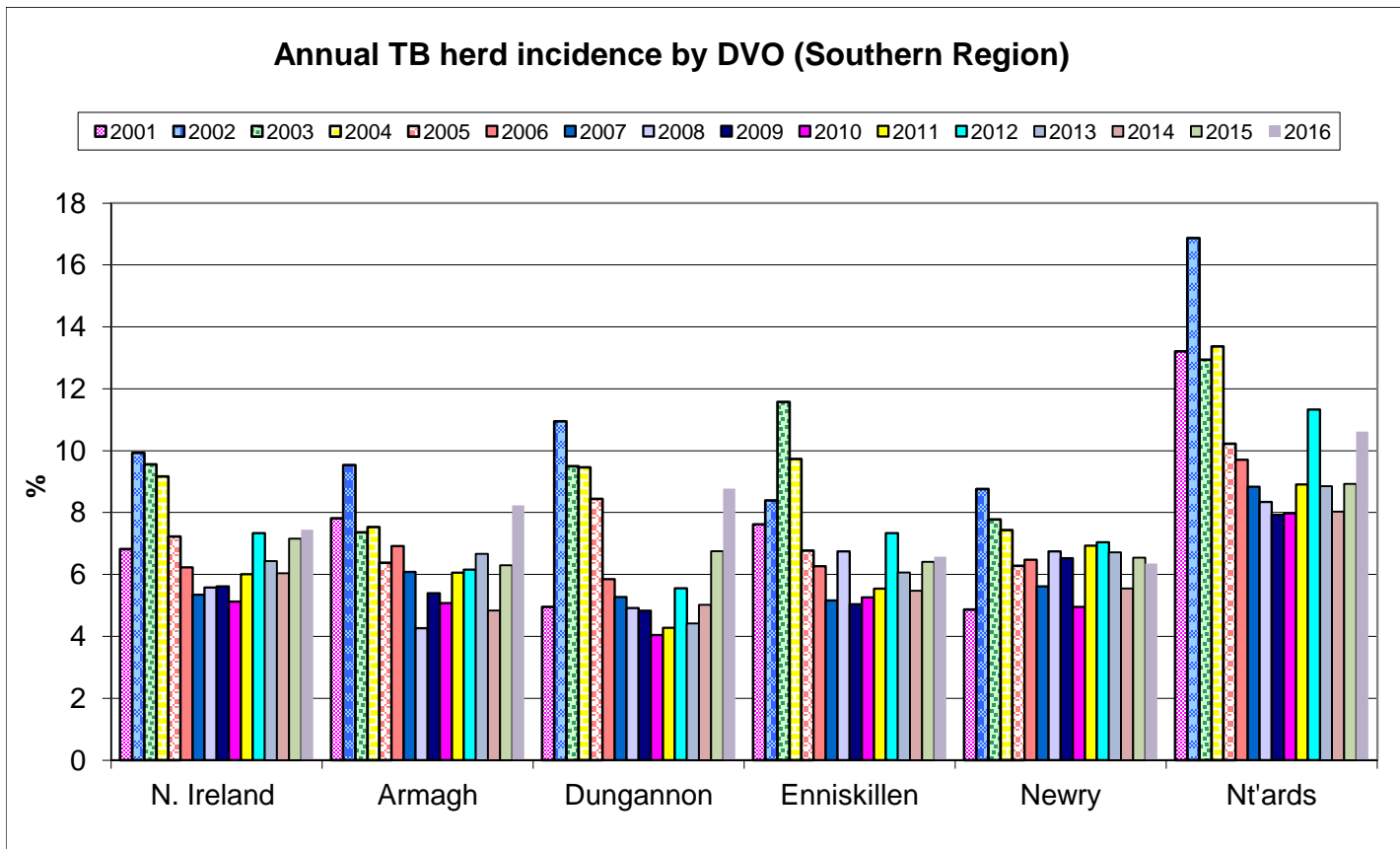


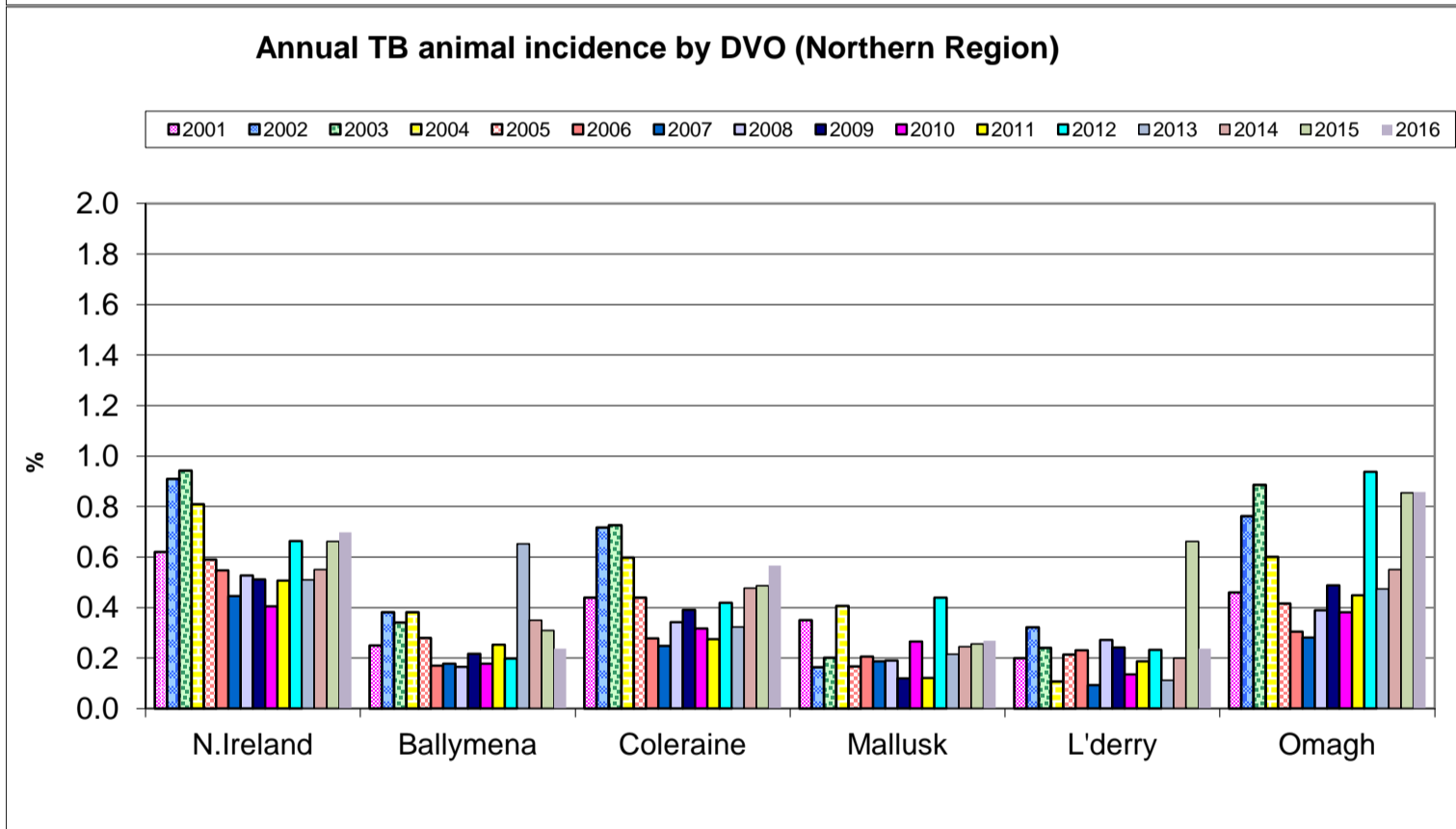
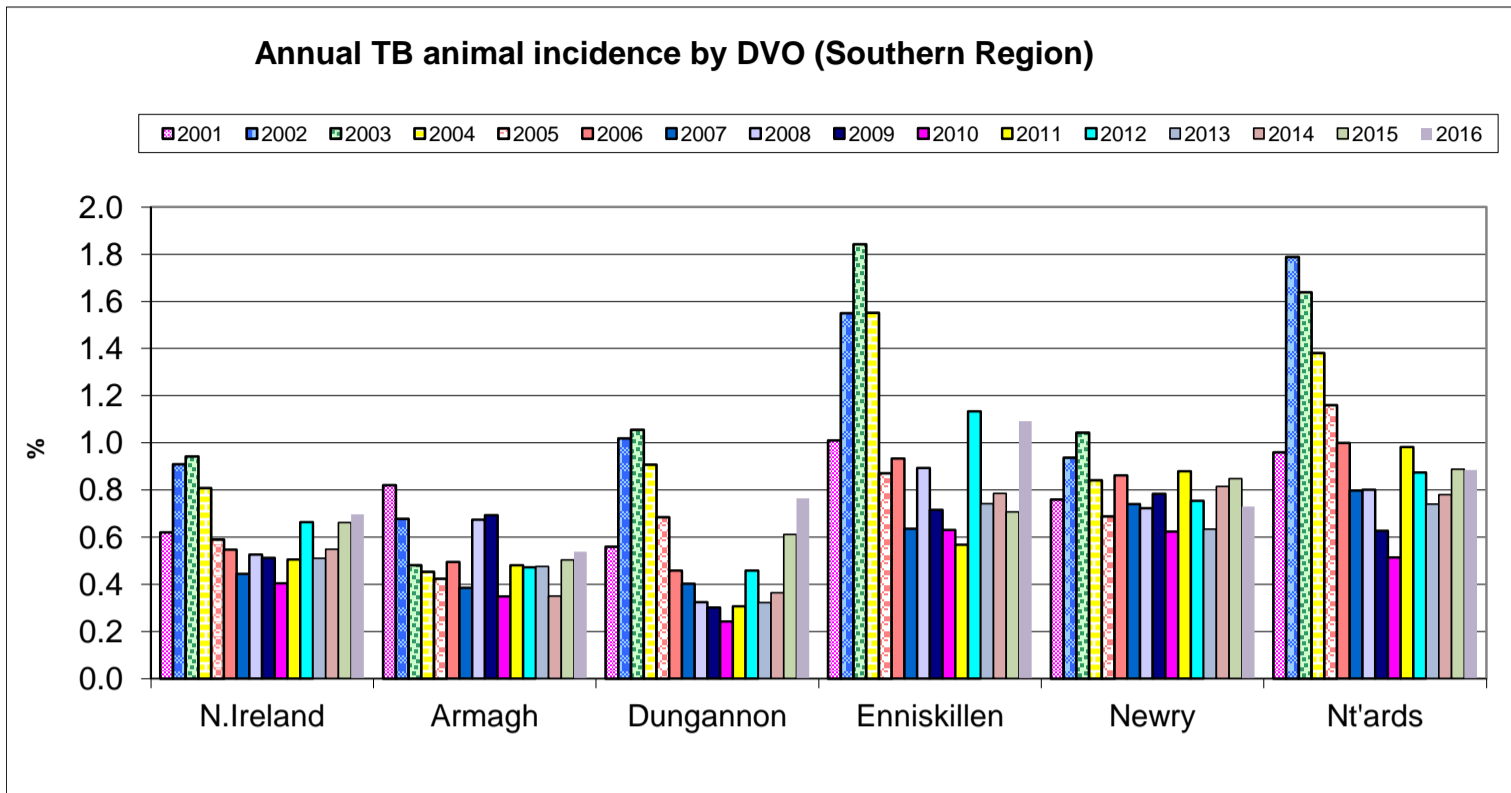
New TB Reactor Herds: January 1995 to February 2017



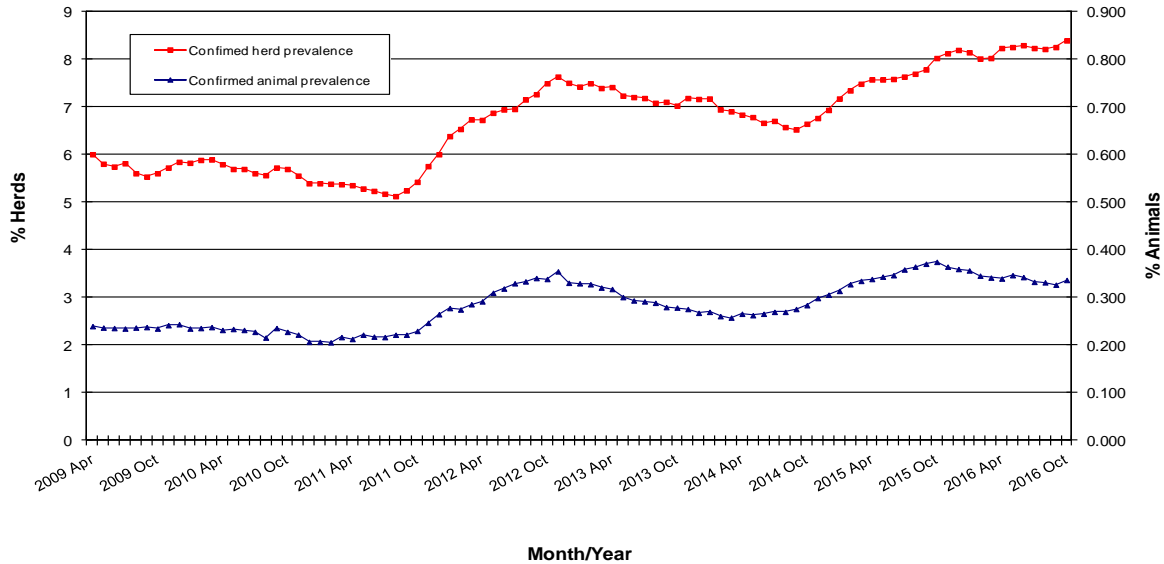
TB Reactors: January 1995 to February 2017



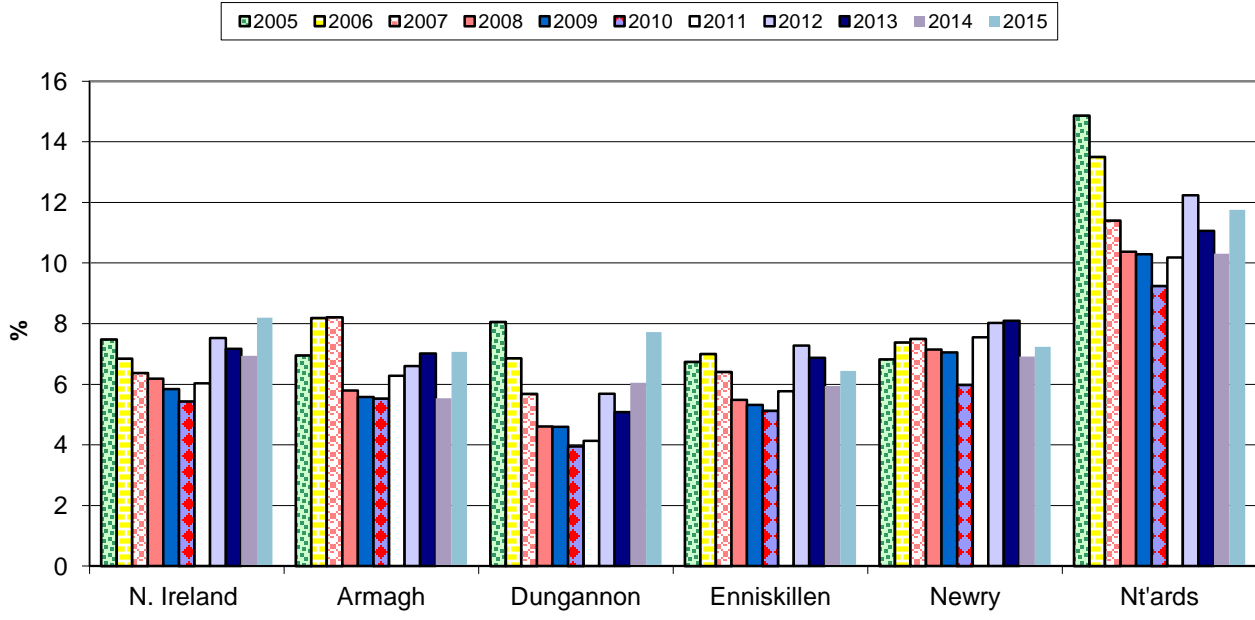




**TB Confirmed Herd[^] and Animal Prevalence:
(12 month moving average: April 2009 to October 2016)**

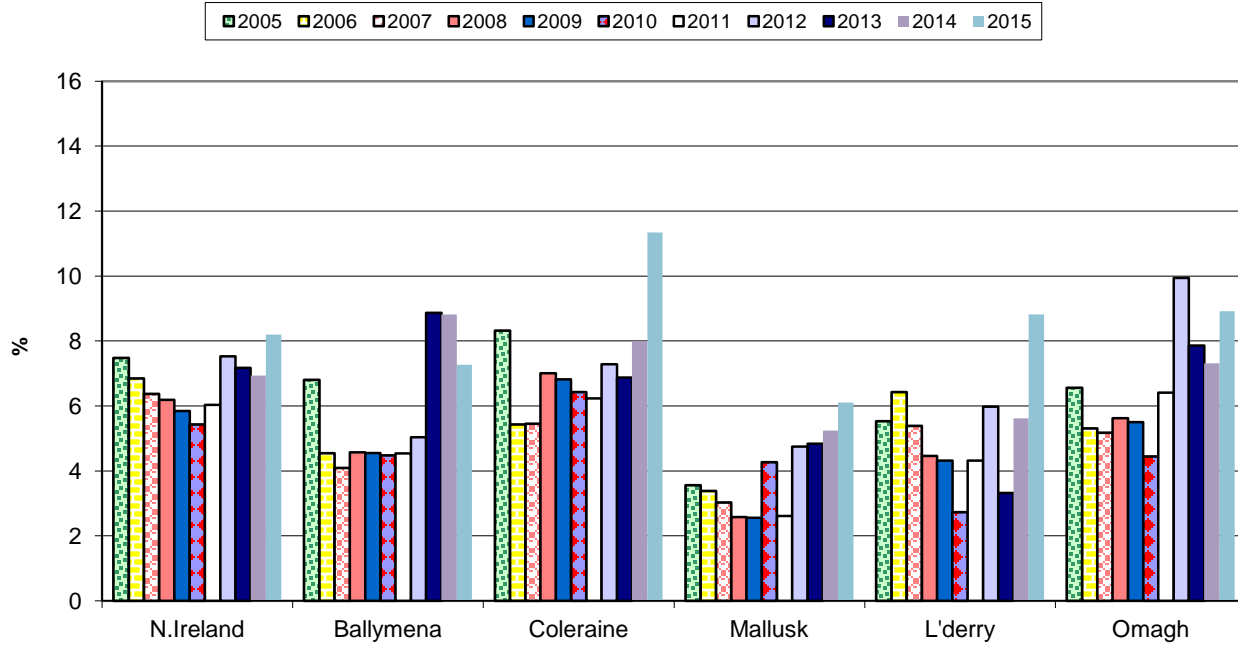


Annual confirmed TB herd prevalence by DVO (Southern Region)



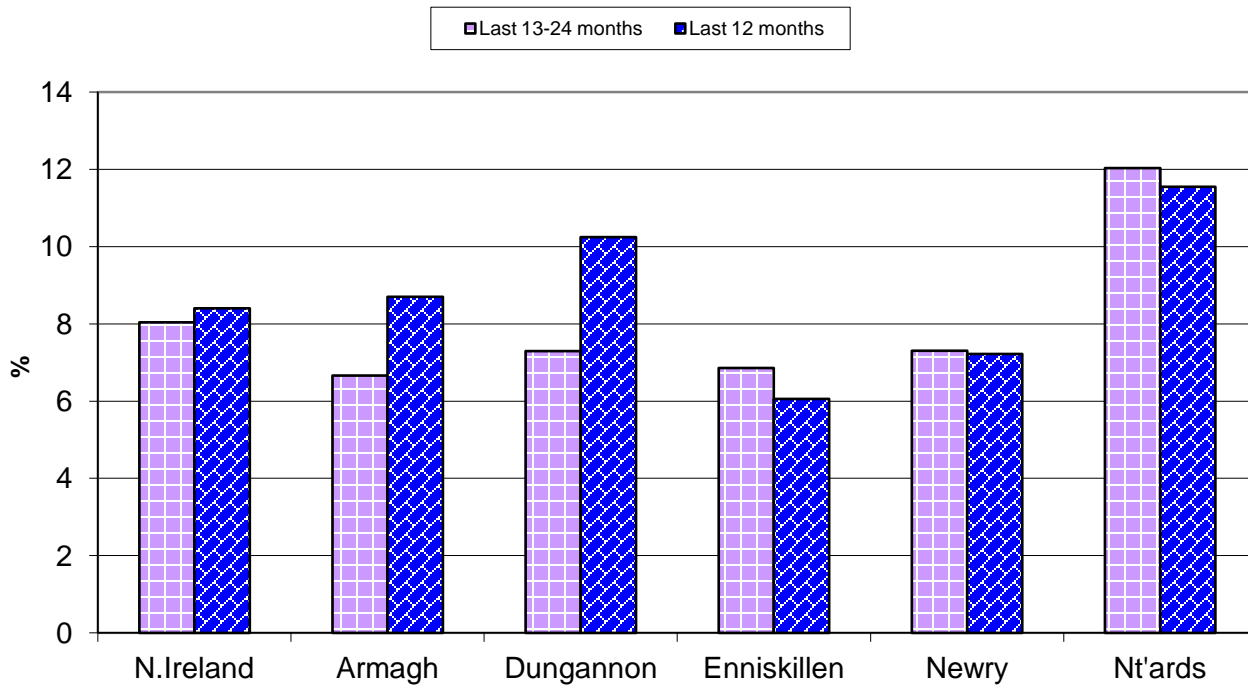
^ numerator includes all herds that had confirmed TB within the 12 month period

Annual confirmed TB herd prevalence by DVO (Northern Region)



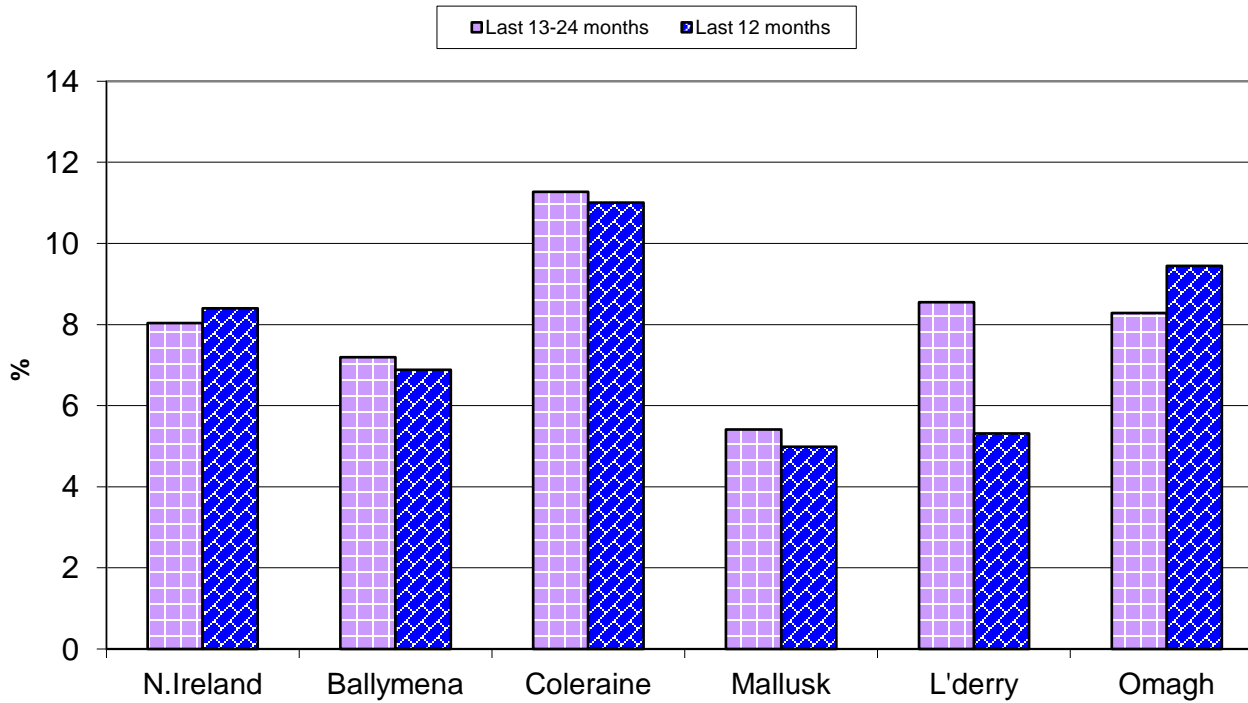
^ numerator includes all herds that had confirmed TB within the 12 month period

Annual confirmed TB herd prevalence[^] by DVO (Southern Region)



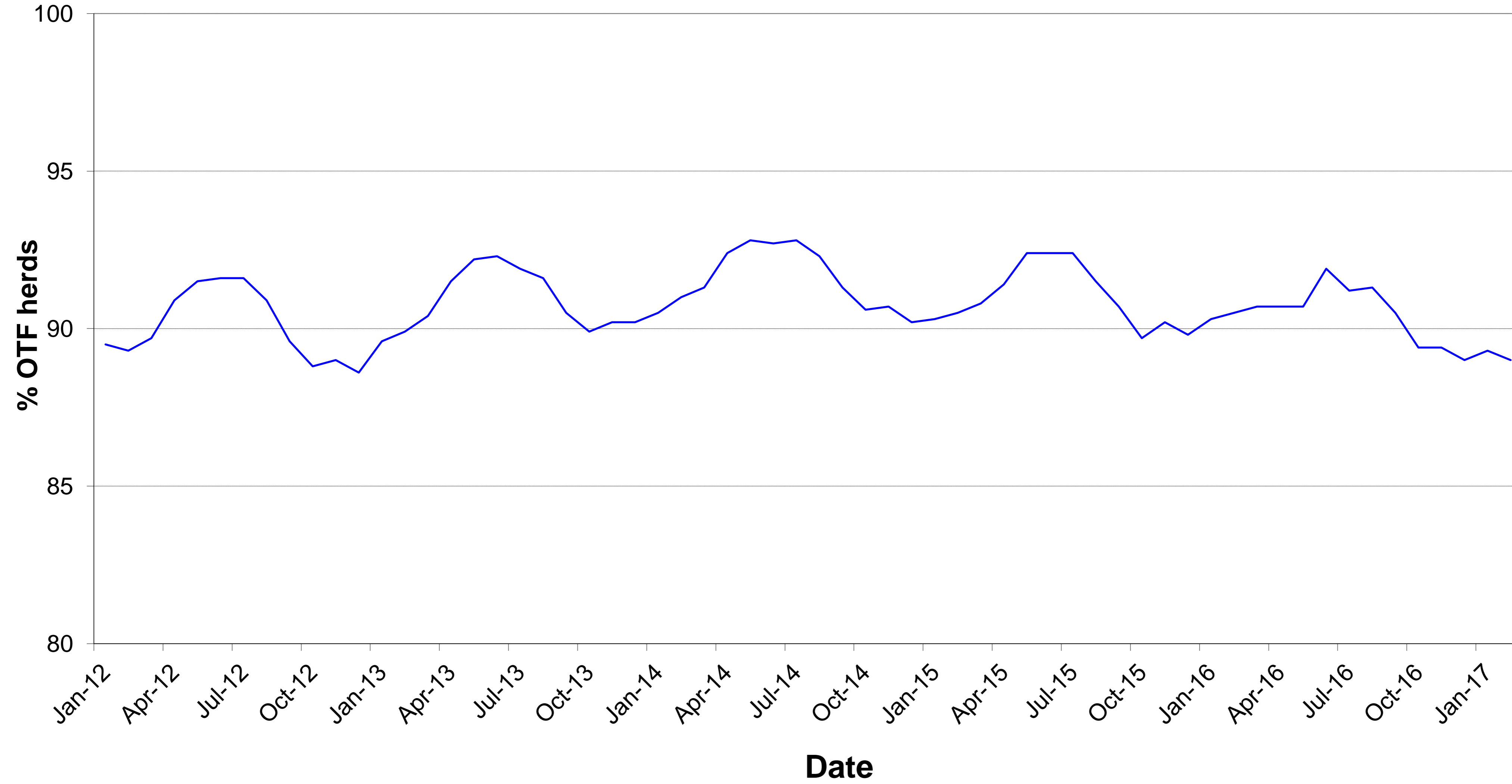
[^] numerator includes all herds that had confirmed TB within the 12 month period

Annual confirmed TB herd prevalence[^] by DVO (Northern Region)



[^] numerator includes all herds that had confirmed TB within the 12 month period

% herds that are officially tuberculosis free (OTF herds)



Month = February 2017

Ref.	Total	Armagh	Ballymena	Coleraine	Dungannon	Enniskillen	Mallusk	L'derry	Newry	Nt'ards	Omagh	
d1	No. of herds with TB reactors during month	320	35	22	36	33	34	14	3	68	38	37
d2	No. of new reactor herds during month	173	15	16	19	19	22	11	2	33	20	16
d3	No. of new reactor herds since start of year	406	45	38	43	51	42	20	9	71	42	45
d4	No. of new reactor herds in the previous 12 months	1837	202	104	224	252	212	69	35	281	222	236
d26	No. of new reactor herds in the previous 13-24 months	1611	151	78	218	204	193	90	67	230	155	225
d5	No. of TB reactor animals during month	1229	82	59	129	109	200	47	3	298	180	122
d6	No. of TB reactor animals since start of year	2800	347	132	242	254	419	70	37	621	421	257
d7	No. of reactor animals in the previous 12 months	12649	1170	356	1314	1531	2076	381	154	2131	1806	1730
d27	No. of reactor animals in the previous 13-24 months	10974	914	271	1122	1412	1189	387	440	1910	1512	1817
d20	Cumulative herd incidence in year (%)	5.91	6.33	8.58	5.57	6.37	5.41	3.68	3.86	6.31	6.81	5.30
d9	Annual herd incidence over the last 12 months (%)	7.94	8.84	7.62	8.77	8.97	6.97	4.37	3.98	7.57	11.54	7.92
d28	Annual herd incidence over the last 13-24 months (%)	6.87	6.59	5.55	8.41	7.15	6.23	5.46	7.74	6.16	8.03	7.40
d11	2016 Herd Incidence (%)	7.45	8.23	6.34	8.72	8.77	6.58	4.52	3.41	6.35	10.62	8.01
d38	2015 Herd Incidence (%)	7.15	6.29	6.21	9.31	6.75	6.41	5.26	8.59	6.54	8.92	7.77
d30	2014 Herd Incidence (%)	6.03	4.84	7.24	7.71	5.02	5.48	5.24	4.83	5.55	8.03	6.62
d16	2013 Herd Incidence (%)	6.44	6.66	8.94	6.72	4.41	6.06	5.85	3.55	6.72	8.86	6.51
d10	2012 Herd Incidence (%)	7.34	6.15	5.19	7.88	5.55	7.34	5.67	5.87	7.04	11.33	9.61
d21	Cumulative animal incidence in year (%)	0.496	0.605	0.335	0.303	0.411	0.912	0.135	0.174	0.810	0.659	0.385
d12	Annual animal incidence over the last 12 months (%)	0.740	0.633	0.301	0.565	0.730	1.226	0.259	0.229	0.882	0.988	0.789
d29	Annual animal incidence over the last 13-24 months (%)	0.653	0.522	0.227	0.485	0.704	0.704	0.265	0.646	0.819	0.838	0.844
d14	2016 Animal Incidence (%)	0.697	0.539	0.237	0.567	0.765	1.092	0.269	0.238	0.731	0.885	0.857
d39	2015 Animal Incidence (%)	0.661	0.504	0.310	0.486	0.612	0.707	0.256	0.661	0.848	0.889	0.855
d31	2014 Animal Incidence (%)	0.550	0.350	0.349	0.476	0.364	0.786	0.244	0.199	0.815	0.781	0.551

d15	2013 Animal Incidence (%)	0.510	0.476	0.652	0.324	0.323	0.742	0.214	0.112	0.634	0.741	0.474
d13	2012 Animal Incidence (%)	0.663	0.473	0.198	0.419	0.459	1.133	0.439	0.232	0.754	0.875	0.938
d34	APT during current month	4.53	3.03	3.11	3.42	3.62	10.11	1.78	0.31	8.00	5.71	3.72
d22	APT since start of year	4.93	6.00	3.34	3.01	4.08	9.07	1.35	1.73	8.04	6.52	3.82
d17	Current 12 month moving average APT	4.52	4.06	2.09	3.17	4.74	8.11	1.92	1.69	5.52	5.72	4.82
d42	2016 APT	4.23	3.45	1.63	3.14	4.99	7.28	1.98	1.72	4.62	5.20	5.20
d40	2015 APT	4.06	3.37	2.08	2.80	4.31	4.46	1.88	4.51	5.33	5.06	5.38
d32	2014 APT	3.55	2.39	2.18	3.24	2.78	5.24	1.79	1.58	5.08	4.64	3.65
d18	2013 APT	3.27	3.14	4.53	2.20	2.42	4.90	1.64	0.86	3.87	4.33	3.05
d19	2012 APT	4.21	3.17	1.52	2.90	3.37	7.17	3.37	1.68	4.57	4.92	5.67
d23	No. negative in contacts since start of year	91	10	1	16	3	13	4	0	9	7	28
d46	No. negative in contacts over last 12 months	610	35	12	88	23	117	12	52	25	74	172
d43	No. negative in contacts during 2016	579	37	11	78	24	105	8	57	17	63	179
d41	No. negative in contacts during 2015	755	59	10	23	62	37	45	9	73	95	342
d33	No. negative in contacts during 2014	1060	40	10	100	227	93	29	9	201	35	316
d24	No. negative in contacts during 2013	565	44	74	3	18	83	22	0	49	35	237
d25	No. negative in contacts during 2012	1394	9	0	23	35	79	611	1	133	55	448
d37	Reactor removal time 2016	8.9	11.0	8.9	8.2	8.2	8.9	8.9	8.2	8.9	8.2	8.2
d36	Reactor removal time 2015	8.9	9.6	9.6	8.9	8.9	8.2	8.9	8.2	9.6	9.6	8.2
d45	Reactor removal time 2014	8.9	9.6	8.9	8.9	8.9	8.9	8.9	8.2	10.3	8.9	8.2
d35	Reactor removal time 2013	8.9	9.6	8.9	8.2	9.6	8.9	9.6	8.9	9.6	9.6	8.2
d47	Reactor removal time 2012	11.6	12.3	12.3	9.6	12.3	10.3	10.3	8.9	11.6	11.6	8.9
D44	Reactor removal time 2011	9.6	13.0	8.2	8.9	8.9	10.3	11.6	8.2	11.6	8.9	8.2

Tuberculosis: number of reactor herds by month and by DVO in 2017 and unique herd breakdowns during the year

2017		DVO_CODE										
Year	Month	Armagh	Ballymena	Coleraine	Dungannon	Enniskillen	L'Derry	Mallusk	Newry	Nt'Ards	Omagh	Total
2017	1	30	22	24	32	20	7	9	38	22	29	233
2017	2	15	16	19	19	22	2	11	33	20	16	173
2017	3											0
2017	4											0
2017	5											0
2017	6											0
2017	7											0
2017	8											0
2017	9											0
2017	10											0
2017	11											0
2017	12											0
Total		45	38	43	51	42	9	20	71	42	45	406

Unique Herd Breakdowns		DVO_CODE										
Year	Armagh	Ballymena	Coleraine	Dungannon	Enniskillen	L'Derry	Mallusk	Newry	Nt'Ards	Omagh	Total Herds	
2017	86	50	75	84	63	13	26	130	90	80	697	

Tuberculosis: number of reactor herds by month and by DVO in 2016 and unique herd breakdowns during the year

2016		DVO_CODE										
Year	Month	Armagh	Ballymena	Coleraine	Dungannon	Enniskillen	L'Derry	Mallusk	Newry	Nt'Ards	Omagh	Total
2016	1	17	14	26	24	17	3	16	19	15	35	186
2016	2	15	8	16	24	14	1	8	9	11	16	122
2016	3	18	9	25	28	15	1	1	19	16	18	150
2016	4	25	12	29	17	24	2	8	26	10	35	188
2016	5	8	3	14	22	16	2	0	13	12	12	102
2016	6	8	5	14	15	11	2	2	9	17	9	92
2016	7	6	3	9	11	16	1	0	19	16	8	89
2016	8	10	1	14	12	11	0	1	13	19	13	94
2016	9	17	6	14	18	15	1	0	23	15	14	123
2016	10	20	7	19	26	17	3	5	21	20	28	166
2016	11	19	13	16	31	16	8	15	28	25	25	196
2016	12	26	7	27	21	29	6	17	39	30	29	231
Total		189	88	223	249	201	30	73	238	206	242	1739

Unique Herd Breakdowns		DVO_CODE										
Year	Armagh	Ballymena	Coleraine	Dungannon	Enniskillen	L'Derry	Mallusk	Newry	Nt'Ards	Omagh	Total Herds	
2016	231	111	319	322	236	49	93	311	249	325	2246	

Tuberculosis: number of reactor herds by month and by DVO in 2015 and unique herd breakdowns during the year

2015		DVO_CODE										
Year	Month	Armagh	Ballymena	Coleraine	Dungannon	Enniskillen	L'Derry	Mallusk	Newry	Nt'Ards	Omagh	Total
2015	1	18	17	36	25	19	8	13	21	21	36	214
2015	2	8	15	31	13	19	4	8	22	23	28	171
2015	3	14	6	24	12	18	2	6	24	12	16	134
2015	4	16	9	22	18	26	5	5	23	17	17	158
2015	5	9	3	13	10	20	5	6	16	10	13	105
2015	6	8	2	9	12	15	4	5	7	10	8	80
2015	7	8	2	10	10	12	11	3	25	12	7	100
2015	8	8	7	12	8	10	3	4	26	17	5	100
2015	9	6	4	12	20	12	8	3	13	9	11	98
2015	10	19	6	26	23	17	11	5	29	13	35	184
2015	11	15	7	29	24	22	5	15	20	15	33	185
2015	12	16	10	19	19	10	9	14	19	14	29	159
Total		145	88	243	194	200	75	87	245	173	238	1688

Unique Herd Breakdowns		DVO_CODE										
Year	Armagh	Ballymena	Coleraine	Dungannon	Enniskillen	L'Derry	Mallusk	Newry	Nt'Ards	Omagh	Total Herds	
2015	180	106	318	240	243	84	100	309	224	292	2096	

A herd is defined as being a TB reactor herd if it had at least one TB reactor animal in that month and no TB reactor animals during the previous 12 months.

A TB unique herd breakdown is defined as a herd which has had at least one TB reactor during the specified calendar year irrespective of any TB reactors during the previous calendar year.

Tuberculosis: number of reactor animals by month and by DVO 2017

2017		DVO_CODE										
Year	Month	Armagh	Ballymena	Coleraine	Dungannon	Enniskillen	L'Derry	Mallusk	Newry	Nt'Ards	Omagh	Total
2017	1	265	73	113	145	219	34	23	323	241	135	1571
2017	2	82	59	129	109	200	3	47	298	180	122	1229
2017	3											0
2017	4											0
2017	5											0
2017	6											0
2017	7											0
2017	8											0
2017	9											0
2017	10											0
2017	11											0
2017	12											0
Total		347	132	242	254	419	37	70	621	421	257	2800

Tuberculosis: number of reactor animals by month and by DVO 2016

2016		DVO_CODE										
Year	Month	Armagh	Ballymena	Coleraine	Dungannon	Enniskillen	L'Derry	Mallusk	Newry	Nt'Ards	Omagh	Total
2016	1	106	41	171	169	100	27	42	140	175	246	1217
2016	2	65	20	77	156	106	17	50	129	72	166	858
2016	3	73	39	75	107	109	11	14	151	74	148	801
2016	4	94	39	191	130	158	19	50	159	106	272	1218
2016	5	76	11	95	90	180	2	29	66	178	133	860
2016	6	23	15	46	62	90	10	16	61	78	57	458
2016	7	72	21	54	70	134	8	35	145	180	67	786
2016	8	98	10	88	99	143	0	17	128	115	129	827
2016	9	64	21	88	94	89	11	14	143	133	218	875
2016	10	129	24	118	185	234	19	15	217	120	192	1253
2016	11	92	23	160	332	189	17	60	186	213	117	1389
2016	12	102	21	157	108	331	20	61	254	188	140	1382
Total		994	285	1320	1602	1863	161	403	1779	1632	1885	11924

Tuberculosis: number of reactor animals by month and by DVO 2015

2015		DVO_CODE										
Year	Month	Armagh	Ballymena	Coleraine	Dungannon	Enniskillen	L'Derry	Mallusk	Newry	Nt'Ards	Omagh	Total
2015	1	85	78	130	98	129	22	33	125	209	245	1154
2015	2	45	80	116	45	87	29	44	198	132	175	951
2015	3	46	19	120	52	64	7	49	108	59	142	666
2015	4	71	28	83	215	126	39	14	223	141	94	1034
2015	5	51	12	46	45	94	42	33	95	84	150	652
2015	6	94	9	30	40	75	22	10	152	59	51	542
2015	7	19	27	75	170	68	78	40	182	115	124	898
2015	8	150	18	86	52	75	10	10	184	219	29	833
2015	9	22	25	112	91	133	66	32	111	117	165	874
2015	10	92	24	132	120	101	54	11	171	144	171	1020
2015	11	110	24	120	137	123	30	66	175	245	215	1245
2015	12	88	24	70	165	124	48	30	240	82	264	1135
Total		873	368	1120	1230	1199	447	372	1964	1606	1825	11004

A TB reactor animal is defined as an animal where the manual interpretation field for a skin test is positive ('P') with the first test date being taken as the time at which the animal became a reactor. Animals with lesions at routine slaughter ('LRS') are not taken into account.

Month = February 2017

Ref.		Total	Armagh	Ballymena	Coleraine	Dungannon	Enniskillen	Mallusk	L'derry	Newry	Nt'ards	Omagh
b16	No. herds with any test completed in month	3846	396	256	424	471	393	317	128	664	353	444
b17	No. herds with any test, from start of year	7821	834	513	870	974	853	634	266	1254	680	943
b29	All herds with any test, from start of year	8074	850	531	900	1013	879	663	281	1275	692	990
b18	No. herds with any test, from start of year (no cattle)	253	16	18	30	39	26	29	15	21	12	47
b19	No. herds with herd test completed in month	3332	331	222	377	375	354	264	107	596	313	393
b20	No. herds with herd test, from start of year	6871	711	443	772	801	776	543	233	1126	617	849
b30	All herds with herd test, from start of year	7124	726	461	804	840	801	572	248	1147	629	896
b21	No. herds with herd test, from start of year (no cattle)	253	15	18	32	39	25	29	15	21	12	47
b22	No. herds with herd test during last 12 months	23131	2286	1365	2553	2810	3043	1580	879	3712	1923	2980
b31	No. herds with herd test during last 13-24 months	23460	2293	1405	2593	2853	3096	1647	866	3735	1931	3041
b24	No. herds with herd test during 2016	23343	2297	1387	2557	2840	3057	1614	880	3750	1940	3021
b39	No. herds with herd test during 2015	23604	2304	1417	2610	2875	3121	1654	873	3748	1939	3063
b32	No. herds with herd test during 2014	23149	2274	1395	2490	2829	3049	1621	890	3658	1892	3051
b28	No. herds with herd test during 2013	22979	2237	1353	2530	2833	3054	1590	873	3618	1863	3028
b23	No. herds with herd test during 2012	23093	2244	1369	2513	2831	3067	1623	869	3638	1880	3059
b25	No. herds with any risk test completed	3515	441	175	388	446	393	211	102	621	304	434
b26	No. herds with herd risk test completed	2287	264	96	259	245	315	97	51	450	206	304
b27	No. herds with restricted herd test completed	1327	145	54	162	186	113	74	39	221	173	160

Month = February 2017

Ref	Total	Armagh	Ballymena	Coleraine	Dungannon	Enniskillen	Mallusk	L'derry	Newry	Nt'ards	Omagh	
c1	Total number of tests in current month	4511	485	281	489	586	423	373	141	778	438	517
c2	Total number of tests from start of year	9276	1054	575	1012	1209	923	786	314	1482	835	1086
c3	No. tests during the same time period in the previous year	9418	960	621	1159	1164	940	809	355	1399	795	1216
c4	% change between years	-1.5	8.9	-8.0	-14.5	3.7	-1.8	-2.9	-13.1	5.6	4.8	-12.0
c5	No. tests in the previous 12 months	45299	5100	2451	5198	5980	5209	2975	1476	7060	4059	5791
c6	No. animal tests in current month	271538	27107	18955	37683	30151	19776	26449	9825	37264	31516	32812
c7	No. animal tests from start of year	568438	57847	39526	80309	62219	46207	51980	21375	77244	64535	67196
c8	No. animal tests during the same time period in the previous year	583914	57952	43752	86439	60036	46059	56063	24017	76373	62691	70532
c9	% change between years	-2.7	-0.2	-10.7	-7.6	3.5	0.3	-7.9	-12.4	1.1	2.9	-5.0
c10	No. animal tests in previous 12 months	2801217	288163	170142	413910	323101	256047	198136	90873	385808	315931	359106
c11	No. cattle herds eligible for TB testing	25894	2573	1545	2832	3124	3320	1841	1003	4143	2138	3375
c12	No. cattle eligible for TB testing	1580708	157405	110692	208848	178971	154339	136678	61474	211234	164210	196857
c13	No. restricted herd tests during month	675	74	27	85	92	50	40	18	119	81	89
c14	No. animals tested	106443	11451	5072	17318	12864	5700	8029	1886	14547	14488	15088
c15	No. herd tests during month	3332	331	222	377	375	354	264	107	596	313	393
c16	No. animals tested	268634	26809	18812	37455	29654	19638	26052	9768	36815	31095	32536
c17	No. individual tests during month	1179	154	59	112	211	69	109	34	182	125	124
c18	No. animals tested	2904	298	143	228	497	138	397	57	449	421	276
c23	No. animals TB tested since start of year	564040	57346	39358	79911	61748	45918	51669	21274	76620	63898	66821
c19	No. animals TB tested in previous 12 months	1709753	184821	118448	232531	209637	169399	147368	67108	241485	182805	219350
c24	No. animals TB tested in previous 13-24 months	1679541	175228	119645	231419	200567	168948	145893	68149	233276	180328	215186
c21	No. animals TB tested in 2016	1709790	184409	120037	232829	209237	170574	148768	67732	243435	184913	219948
c26	No. animals TB tested in 2015	1662355	173129	118652	230608	200883	169615	144926	67583	230622	180647	213478
c25	No. animals TB tested in 2014	1607660	166774	117083	214490	191534	163019	143992	61765	225643	177960	207187
c22	No. animals TB tested in 2013	1620055	172322	114133	214509	197072	166287	140842	62228	224389	180893	210490
c20	No. animals TB tested in 2012	1643626	171497	112484	213785	196069	168531	143005	64217	229674	181839	219225

Month = February 2017

Ref		Total	Armagh	Ballymena	Coleraine	Dungannon	Enniskillen	Mallusk	L'derry	Newry	Nt'ards	Omagh
f1	No. of Officially Tuberculosis Free Herds (OTF)	26271	2553	1618	2955	3154	3355	1995	1135	4123	1942	3441
f2	No. of Officially Tuberculosis Suspended Herds (OTS)	1271	169	51	121	136	109	123	32	251	121	158
f3	No. of Officially Tuberculosis Withdrawn Herds (OTW)	1962	251	102	217	249	142	110	47	362	258	224
f4	% herds that are OTF	89.0	85.9	91.4	89.7	89.1	93.0	89.5	93.5	87.1	83.7	90.0
f5	% herds that are OTS	4.3	5.7	2.9	3.7	3.8	3.0	5.5	2.6	5.3	5.2	4.1
f6	% herds that are OTW	6.6	8.4	5.8	6.6	7.0	3.9	4.9	3.9	7.6	11.1	5.9

		Month = October 2016										
		(Data lagged by 4 months)										
Ref		Total	Armagh	Ballymena	Coleraine	Dungannon	Enniskillen	Mallusk	L'derry	Newry	Nt'ards	Omagh
e19	Num. TB culture positive animals that were not TB reactors in last 12 months	686	75	41	91	104	37	31	13	146	90	58
e20	Num. TB culture positive animals that were not TB reactors in last 13-24 months	672	61	42	87	78	28	48	16	116	118	78
e5	Num. TB culture positive animals that were not TB reactors in 2015	676	71	41	95	84	27	38	18	120	112	70
e6	Num. TB culture positive animals that were not TB reactors in 2014	575	68	37	54	66	38	53	12	100	80	67
e2	Num. TB culture positive animals that were not TB reactors in 2013	583	63	33	32	98	28	30	7	131	92	69
e3	Num. TB culture positive animals that were not TB reactors in 2012	600	62	32	48	66	32	31	9	155	91	74
e4	Num. TB culture positive animals that were not TB reactors in 2011	558	69	40	42	47	31	25	5	154	77	68
e21	No. herds with TB culture positive animals that were not TB reactors in last 12 months	459	49	22	59	66	28	27	10	94	61	43
e22	No. herds with TB culture positive animals that were not TB reactors in last 13-24 months	428	45	27	63	51	19	28	12	63	72	48
e11	No. herds with TB culture positive animals that were not TB reactors in 2015	449	50	25	70	55	20	27	12	67	78	45
e12	No. herds with TB culture positive animals that were not TB reactors in 2014	372	47	25	37	48	27	27	10	66	51	34
e8	No. herds with TB culture positive animals that were not TB reactors in 2013	381	50	14	30	46	20	20	5	83	60	53
e9	No. herds with TB culture positive animals that were not TB reactors in 2012	401	46	17	35	48	25	23	9	82	67	49
e10	No. herds with TB culture positive animals that were not TB reactors in 2011	363	48	17	31	32	27	17	3	87	56	45
e23	% of TB animals that were TB culture positive that were not TB reactors in last 12 months	5.6	7.0	12.4	7.1	6.6	2.3	7.6	6.0	7.7	5.5	2.7
e24	% of TB animals that were TB culture positive that were not TB reactors in last 13-24 months	5.9	7.1	9.4	6.2	6.3	2.2	12.5	3.9	5.4	7.1	4.7
e17	% of TB animals that were TB culture positive that were not TB reactors in 2015	5.8	7.5	10.0	7.8	6.4	2.2	9.3	3.9	5.8	6.5	3.7
e18	% of TB animals that were TB culture positive that were not TB reactors in 2014	6.1	10.4	8.3	5.0	8.7	2.9	13.1	8.9	5.2	5.4	5.5
e14	% of TB animals that were TB culture positive that were not TB reactors in 2013	6.6	7.1	4.2	4.4	13.4	2.2	9.0	9.1	8.4	6.4	6.5
e15	% of TB animals that were TB culture positive that were not TB reactors in 2012	5.2	7.1	12.5	5.1	6.8	1.6	4.7	5.7	8.2	5.4	3.5
e16	% of TB animals that were TB culture positive that were not TB reactors in 2011	6.4	7.9	12.2	6.6	7.5	3.3	12.8	4.0	7.2	4.2	6.7

		Month = October 2016										
Ref	(Data lagged by 4 months)	Total	Armagh	Ballymena	Coleraine	Dungannon	Enniskillen	Mallusk	L'derry	Newry	Nt'ards	Omagh
g31	No. of confirmed TB reactors during last 12 months	4977	421	143	654	719	597	164	131	621	687	840
g32	No. of confirmed TB reactors during last 13-24 months	5453	415	241	787	571	601	178	246	827	780	807
g5	No. of confirmed TB reactors 2015	5304	428	228	658	591	561	194	284	782	718	860
g6	No. of confirmed TB reactors 2014	4346	294	229	591	392	561	156	84	725	722	592
g2	No. of confirmed TB reactors 2013	3765	377	422	373	255	520	116	40	541	636	485
g3	No. of confirmed TB reactors 2012	4836	339	131	416	429	821	241	83	698	730	948
g4	No. of confirmed TB reactors 2011	3867	382	134	294	230	495	72	73	809	818	560
g33	Total animals with confirmed TB during last 12 months	5663	496	184	745	823	634	195	144	767	777	898
g34	Total animals with confirmed TB in last 13-24 months	6125	476	283	874	649	629	226	262	943	898	885
g11	Total animals with confirmed TB in 2015	5980	499	269	753	675	588	232	302	902	830	930
g12	Total animals with confirmed TB in 2014	4921	362	266	645	458	599	209	96	825	802	659
g8	Total animals with confirmed TB in 2013	4348	440	455	405	353	548	146	47	672	728	554
g9	Total animals with confirmed TB in 2012	5436	401	163	464	495	853	272	92	853	821	1022
g10	Total animals with confirmed TB in 2011	4425	451	174	336	277	526	97	78	963	895	628
g35	Confirmed TB animal prevalence in last 12 months (%)	0.337	0.276	0.156	0.323	0.398	0.376	0.134	0.216	0.319	0.430	0.420
g36	Confirmed TB animal prevalence in last 13-24 months (%)	0.375	0.279	0.241	0.387	0.331	0.377	0.157	0.402	0.420	0.500	0.420
g17	Confirmed TB animal prevalence in 2015 (%)	0.360	0.288	0.226	0.326	0.336	0.347	0.160	0.447	0.391	0.459	0.436
g18	Confirmed TB animal prevalence in 2014 (%)	0.306	0.217	0.227	0.301	0.239	0.367	0.145	0.155	0.366	0.451	0.318
g14	Confirmed TB animal prevalence in 2013 (%)	0.268	0.255	0.399	0.189	0.179	0.330	0.104	0.076	0.299	0.402	0.263
g15	Confirmed TB animal prevalence in 2012 (%)	0.331	0.234	0.145	0.217	0.252	0.506	0.190	0.143	0.371	0.452	0.466
g16	Confirmed TB animal prevalence in 2011 (%)	0.275	0.271	0.154	0.155	0.146	0.331	0.069	0.120	0.427	0.502	0.299
g37	No. herds with confirmed TB in last 12 months	1956	200	95	281	293	183	81	47	270	223	283
g38	No. herds with confirmed TB in last 13-24 months	1897	154	102	293	210	214	90	75	272	232	255
g23	No. herds with confirmed TB in 2015	1935	163	103	296	222	201	101	77	271	228	273
g24	No. herds with confirmed TB in 2014	1606	126	123	199	171	181	85	50	253	195	223
g20	No. herds with confirmed TB in 2013	1648	157	120	174	144	210	77	29	293	206	238
g21	No. herds with confirmed TB in 2012	1739	148	69	183	161	223	77	52	292	230	304
g22	No. herds with confirmed TB in 2011	1392	138	63	160	116	177	43	38	277	184	196
g39	Confirmed TB herd prevalence in last 12 months (%)	8.40	8.70	6.88	11.00	10.25	6.06	4.98	5.32	7.22	11.54	9.45
g40	Confirmed TB herd prevalence in last 13-24 months (%)	8.04	6.66	7.19	11.27	7.30	6.86	5.41	8.55	7.30	12.03	8.28

g29	Confirmed TB herd prevalence in 2015 (%)	8.20	7.07	7.27	11.34	7.72	6.44	6.11	8.82	7.23	11.76	8.91
g30	Confirmed TB herd prevalence in 2014 (%)	6.94	5.54	8.82	7.99	6.04	5.94	5.24	5.62	6.92	10.31	7.31
g26	Confirmed TB herd prevalence in 2013 (%)	7.17	7.02	8.87	6.88	5.08	6.88	4.84	3.32	8.10	11.06	7.86
g27	Confirmed TB herd prevalence in 2012 (%)	7.53	6.60	5.04	7.28	5.69	7.27	4.74	5.98	8.03	12.23	9.94
g28	Confirmed TB herd prevalence in 2011 (%)	6.03	6.28	4.54	6.23	4.13	5.77	2.62	4.31	7.55	10.18	6.41

Explanatory Comments for Tuberculosis Statistics - B. Testing Herds

Ref	Data Title	Explanation
B16	No. herds with any test completed in month	Test of any disease status and size (herd or animal-level). Tests with no animals are excluded.
B17	No. herds with any test, from start of year	Test of any disease status and size (herd or animal-level) carried out on a herd since 1st January. Tests with no animals are excluded.
B29	All herds with any test, from start of year	Skin test of any disease status and size (herd or animal-level) carried out on a herd since 1st January. Tests with no animals are included.
B18	No. herds with any test, from start of year (no cattle)	Herd or individual test of any disease status (routine, risk or restricted) where no cattle were recorded at all such tests since 1st January.
B19	No. herds with herd test completed in month	Herd level test of any disease status (routine, risk or restricted) completed during the above month. Tests with no animals are excluded.
B20	No. herds with herd test, from start of year	Herd level test of any disease status (routine, risk or restricted) completed since 1st January. Tests with no animals are excluded.
B30	All herds with herd test, from start of year	Herd level test of any disease status (routine, risk or restricted) completed since 1st January. Tests with no animals are included.
B21	No. herds with herd test, from start of year (no cattle)	Herd level test of any disease status (routine, risk or restricted) where no cattle were recorded at all such herd tests since 1st January.
B22	No. herds with herd test during last 12 months	Herd level test of any disease status (routine, risk or restricted) completed in the 12 month period from the above month. Tests with no animals are excluded.
B31	No. herds with herd test during last 13-24 months	Herd level test of any disease status (routine, risk or restricted) completed in the 13-24 months from the above month. Tests with no animals are excluded.
B39	No. herds with herd test during the year	Herd level test of any disease status (routine, risk or restricted) completed in the calendar year. Tests with no animals are excluded.
B32	No. herds with herd test during the year	Herd level test of any disease status (routine, risk or restricted) completed in the calendar year. Tests with no animals are excluded.
B28	No. herds with herd test during the year	Herd level test of any disease status (routine, risk or restricted) completed in the calendar year. Tests with no animals are excluded.
B23	No. herds with herd test during the year	Herd level test of any disease status (routine, risk or restricted) completed in the calendar year. Tests with no animals are excluded.
B24	No. herds with herd test during the year	Herd level test of any disease status (routine, risk or restricted) completed in the calendar year. Tests with no animals are excluded.
B25	No. herds with any risk test completed	Herd has had a herd or individual level risk test since start of calendar year and number tested > 0.
B26	No. herds with herd risk test completed	Herd has had a herd level risk test since start of calendar year and number tested > 0.
B27	No. herds with restricted herd test completed	Herd has had a restricted herd test (RHT, RH1, RH2) since start of calendar year and number tested > 0.

Explanatory Comments for Tuberculosis Statistics - C. Testing Animals

Ref	Data Title	Explanation
C1	Total number of tests in current month	Number of herds and individual tests performed in the month stated above. Tests with no animals are excluded.
C2	Total number of tests from start of year	From 1st January. Tests with no animals are excluded.
C3	No. tests during the same time period in the previous year	From 1st January of previous year. Tests with no animals are excluded.
C4	% change between years	Difference between the number of tests carried out during the current year and the number carried out in the previous expressed as a percentage.
C5	No. tests in the previous 12 months	Last 12 month period from the above month. Tests with no animals are excluded.
C6	No. animal tests in current month	Animal test = a count of the number of animals tested within each herd or individual test. Some animals may have been tested multiple times during the year.
C7	No. animal tests from start of year	Number of animal tests carried out since 1st January.
C8	No. animal tests during the same time period in the previous year	Number of animal tests carried out from 1st January in the previous year over the same time interval as recorded for the current year.
C9	% change between years	Difference between the number of animal tests during the current year and the number carried out in the previous expressed as a percentage.
C10	No. animal tests in previous 12 months	Last 12 month period from the above month.
C11	No. cattle eligible for TB testing	Based on the average number of animals presented at TB herd tests over last 4 years.
C12	No. cattle herds eligible for TB testing	Based on cattle being presented for a TB herd tests over last 4 years. Herds with '0' cattle are excluded.

C13	No. restricted herd tests during month	All restricted herd tests (RHT, RH1 and RH2) carried out during the above month.
C14	No. animals tested	Total of the animals reported as being tested within restricted herd tests (RHT, RH1, RH2) during the above month.
C15	No. herd tests during month	Total of the animals reported as being tested within all herd tests during the above month.
C16	No. animals tested	Total of the animals reported as being tested within all herd tests during the above month.
C17	No. individual tests during month	Total of the animals reported as being tested within all individual tests during the above month.
C18	No. animals tested	Total of the animals reported as being tested within all individual tests during the above month.
C23	No. animals TB tested since start of year	Animals identified as having had at least one TB skin test since the start of the calendar year. Due to the same animals being sampled in different DVO areas, the 'Total' is not the sum of the DVO figures.
C19	No. animals TB tested in previous 12 months	Animals identified as having had at least one TB skin test during the last 12 month period from the above month. Due to the same animals being sampled in different DVO areas, the 'Total' is not the sum of the DVO figures.
C24	No. animals TB tested in previous 13-24 months	Animals identified as having had at least one TB skin test during the last 13-24 months from the above month. Due to the same animals being sampled in different DVO areas, the 'Total' is not the sum of the DVO figures.
C26	No. animals TB tested in the year	Animals identified as having had at least one TB skin test during the calendar year. Due to the same animals being sampled in different DVO areas, the 'Total' is not the sum of the DVO figures.
C25	No. animals TB tested in the year	Animals identified as having had at least one TB skin test during the calendar year. Due to the same animals being sampled in different DVO areas, the 'Total' is not the sum of the DVO figures.
C22	No. animals TB tested in the year	Animals identified as having had at least one TB skin test during the calendar year. Due to the same animals being sampled in different DVO areas, the 'Total' is not the sum of the DVO figures.
C20	No. animals TB tested in the year	Animals identified as having had at least one TB skin test during the calendar year. Due to the same animals being sampled in different DVO areas, the 'Total' is not the sum of the DVO figures.
C21	No. animals TB tested in the year	Animals identified as having had at least one TB skin test during the calendar year. Due to the same animals being sampled in different DVO areas, the 'Total' is not the sum of the DVO figures.
Explanatory Comments for Tuberculosis Statistics - D. Results		
Ref	Data Title	Explanation
D1	No. of herds with TB reactors during month	A herd is included in this figure if the herd number had a TB skin test reactor during the above month.
D2	No. of new reactor herds during month	A herd is defined as being a TB reactor herd if it had at least one TB reactor animal in that month and no TB reactor animals during the previous 12 months.
D3	No. of new reactor herds since start of year	= Since 1st January
D4	No. of new reactor herds in the previous 12 months	Last 12 month period from the above month.
D26	No. of new reactor herds in previous 13-24 months	Last 13-24 month period from the above month.
D5	No. of TB reactor animals during month	A TB reactor animal is defined as an animal where the manual interpretation field for a skin test is positive ('P') with the first test date being taken as the time at which the animal became a reactor. Currently animals with lesions at routine slaughter (*LRS*) are not taken into account.
D6	No. of TB reactor animals since start of year	= Since 1st January
D7	No. of reactor animals in the previous 12 months	Last 12 month period from the above month.
D27	No. of reactor animals in previous 13-24 months	Last 13-24 month period from the above month.
D20	Cumulative herd incidence in year (%)	Number of NEW reactor herds since the start of the calendar year as a proportion of cattle herds which have presented cattle for a TB herd test during the same time period.
D9	Annual herd incidence over the last 12 months (%)	Number of NEW reactor herds during the last 12 months as a proportion of cattle herds which have presented cattle for a TB herd test during the same time period.
D28	Annual herd incidence over the last 13-24 months (%)	Number of NEW reactor herds during the last 13-24 months as a proportion of cattle herds which have presented cattle for a TB herd test during the same time period.
D38	In-year Herd Incidence (%)	Number of NEW reactor herds during the year as a proportion of cattle herds which have presented cattle for a TB herd test during the same time period.
D30	In-year Herd Incidence (%)	Number of NEW reactor herds during the year as a proportion of cattle herds which have presented cattle for a TB herd test during the same time period.
D16	In-year Herd Incidence (%)	Number of NEW reactor herds during the year as a proportion of cattle herds which have presented cattle for a TB herd test during the same time period.
D10	In-year Herd Incidence (%)	Number of NEW reactor herds during the year as a proportion of cattle herds which have presented cattle for a TB herd test during the same time period.
D11	In-year Herd Incidence (%)	Number of NEW reactor herds during the year as a proportion of cattle herds which have presented cattle for a TB herd test during the same time period.
D21	Cumulative animal incidence in year (%)	Number of reactor animals during the above month as a proportion of cattle which have been presented for a TB test during the same time period.
D12	Annual animal incidence over the last 12 months (%)	Number of reactor animals during the last 12 months as a proportion of cattle which have been presented for a TB test during the same time period.
D29	Annual animal incidence over the last 13-24 months (%)	Number of reactor animals during the last 13-24 months as a proportion of cattle which have been presented for a TB test during the same time period.

D39	In year Animal Incidence (%)	Number of reactor animals during the year as a proportion of cattle which have been presented for a TB herd test during the same time period.
D31	In year Animal Incidence (%)	Number of reactor animals during the year as a proportion of cattle which have been presented for a TB herd test during the same time period.
D15	In year Animal Incidence (%)	Number of reactor animals during the year as a proportion of cattle which have been presented for a TB herd test during the same time period.
D13	In year Animal Incidence (%)	Number of reactor animals during the year as a proportion of cattle which have been presented for a TB herd test during the same time period.
D14	In year Animal Incidence (%)	Number of reactor animals during the year as a proportion of cattle which have been presented for a TB herd test during the same time period.
D34	APT during current month	= The reactor disclosure rate per 1,000 animal tests current calendar month.
D22	APT since start of year	The reactor disclosure rate per 1,000 animal tests since the start of the calendar year.
D17	Current 12 month moving average APT	The reactor disclosure rate per 1,000 animal tests. Current refers to the rate over the last 12 months.
D42	In year APT	The reactor disclosure rate per 1,000 animal tests during the calendar year.
D40	In year APT	The reactor disclosure rate per 1,000 animal tests during the calendar year.
D32	In year APT	The reactor disclosure rate per 1,000 animal tests during the calendar year.
D18	In year APT	The reactor disclosure rate per 1,000 animal tests during the calendar year.
D19	In year APT	The reactor disclosure rate per 1,000 animal tests during the calendar year.
D23	No. negative in contacts since start of year	Number of animals taken as negative in contacts since the start of the year.
d46	No. Negative in contacts over last 12 months (%)	= Number of negative in contacts during the last 12 months
D43	No. negative in contacts during the year	Number of animals taken as negative in contacts during the year.
D41	No. negative in contacts during the year	Number of animals taken as negative in contacts during the year.
D33	No. negative in contacts during the year	Number of animals taken as negative in contacts during the year.
D24	No. negative in contacts during the year	Number of animals taken as negative in contacts during the year.
D25	No. negative in contacts during the year	Number of animals taken as negative in contacts during the year.
D37	Reactor removal time during the year	Figures given are median values for working days estimated from calendar days (calendar days multiplied by 0.685). Reactors which are not yet slaughtered or where they they were first declared as reactors at slaughter are excluded.
D45	Reactor removal time during the year	Figures given are median values for working days estimated from calendar days (calendar days multiplied by 0.685). Reactors which are not yet slaughtered or where they they were first declared as reactors at slaughter are excluded.
D35	Reactor removal time during the year	Figures given are median values for working days estimated from calendar days (calendar days multiplied by 0.685). Reactors which are not yet slaughtered or where they they were first declared as reactors at slaughter are excluded.
D44	Reactor removal time during the year	Figures given are median values for working days estimated from calendar days (calendar days multiplied by 0.685). Reactors which are not yet slaughtered or where they they were first declared as reactors at slaughter are excluded.
D36	Reactor removal time during the year	Figures given are median values for working days estimated from calendar days (calendar days multiplied by 0.685). Reactors which are not yet slaughtered or where they they were first declared as reactors at slaughter are excluded.

g35	Confirmed TB animal prevalence in last 12 months (%)	Number of TB reactors that were confirmed during the last 12 months by the presence of visible lesions at slaughter and/or by laboratory confirmation (histopathology and/or culture) plus the number of other animals where M. bovis was cultured from TB-like lesions found at slaughter during the last 12 months that were not identified as TB reactor animals divided by the number of animals tuberculin tested during the last 12 months expressed as a %
g36	Confirmed TB animal prevalence in last 13-24 months (%)	Number of TB reactors that were confirmed during the last 13-24 months by the presence of visible lesions at slaughter and/or by laboratory confirmation (histopathology and/or culture) plus the number of other animals where M. bovis was cultured from TB-like lesions found at slaughter during the last 13-24 months that were not identified as TB reactor animals divided by the number of animals tuberculin tested during the last 13-24 months expressed as a %
g18	Confirmed TB animal prevalence in year (%)	Number of TB reactors that were confirmed during the year by the presence of visible lesions at slaughter and/or by laboratory confirmation (histopathology and/or culture) plus the number of other animals where M. bovis was cultured from TB-like lesions found at slaughter during the year that were not identified as TB reactor animals divided by the number of animals tuberculin tested during the year expressed as a %
g14	Confirmed TB animal prevalence in year (%)	Number of TB reactors that were confirmed during the year by the presence of visible lesions at slaughter and/or by laboratory confirmation (histopathology and/or culture) plus the number of other animals where M. bovis was cultured from TB-like lesions found at slaughter during the year that were not identified as TB reactor animals divided by the number of animals tuberculin tested during the year expressed as a %
g15	Confirmed TB animal prevalence in year (%)	Number of TB reactors that were confirmed during the year by the presence of visible lesions at slaughter and/or by laboratory confirmation (histopathology and/or culture) plus the number of other animals where M. bovis was cultured from TB-like lesions found at slaughter during the year that were not identified as TB reactor animals divided by the number of animals tuberculin tested during the year expressed as a %
g16	Confirmed TB animal prevalence in year (%)	Number of TB reactors that were confirmed during the year by the presence of visible lesions at slaughter and/or by laboratory confirmation (histopathology and/or culture) plus the number of other animals where M. bovis was cultured from TB-like lesions found at slaughter during the year that were not identified as TB reactor animals divided by the number of animals tuberculin tested during the year expressed as a %
g17	Confirmed TB animal prevalence in year (%)	Number of TB reactors that were confirmed during the year by the presence of visible lesions at slaughter and/or by laboratory confirmation (histopathology and/or culture) plus the number of other animals where M. bovis was cultured from TB-like lesions found at slaughter during the year that were not identified as TB reactor animals divided by the number of animals tuberculin tested during the year expressed as a %
g37	No. herds with confirmed TB in last 12 months	Herds that had at least one confirmed TB animal during the last 12 months.
g38	No. herds with confirmed TB in last 13-24 months	Herds that had at least one confirmed TB animal during the last 13-24 months.
g24	No. herds with confirmed TB in year	Herds that had at least one confirmed TB animal during the year.
g20	No. herds with confirmed TB in year	Herds that had at least one confirmed TB animal during the year.
g21	No. herds with confirmed TB in year	Herds that had at least one confirmed TB animal during the year.
g22	No. herds with confirmed TB in year	Herds that had at least one confirmed TB animal during the year.
g23	No. herds with confirmed TB in year	Herds that had at least one confirmed TB animal during the year.
g39	Confirmed TB herd prevalence in last 12 months (%)	Number of herds that had at least one confirmed TB animal during the last 12 months divided the number of herds that presented cattle at a TB herd test expressed as a %.
g40	Confirmed TB herd prevalence in last 13-24 months (%)	Number of herds that had at least one confirmed TB animal during the last 13-24 months divided the number of herds that presented cattle at a TB herd test expressed as a %.
g30	Confirmed TB herd prevalence in year (%)	Number of herds that had at least one confirmed TB animal during the year divided the number of herds that presented cattle at a TB herd test expressed as a %.
g26	Confirmed TB herd prevalence in year (%)	Number of herds that had at least one confirmed TB animal during the year divided the number of herds that presented cattle at a TB herd test expressed as a %.
g27	Confirmed TB herd prevalence in year (%)	Number of herds that had at least one confirmed TB animal during the year divided the number of herds that presented cattle at a TB herd test expressed as a %.
g28	Confirmed TB herd prevalence in year (%)	Number of herds that had at least one confirmed TB animal during the year divided the number of herds that presented cattle at a TB herd test expressed as a %.
g29	Confirmed TB herd prevalence in year (%)	Number of herds that had at least one confirmed TB animal during the year divided the number of herds that presented cattle at a TB herd test expressed as a %.