

Weed-Wiping “The Rush Solution Without Pollution”

Dominic Mc Cann
Farm Liaison Officer

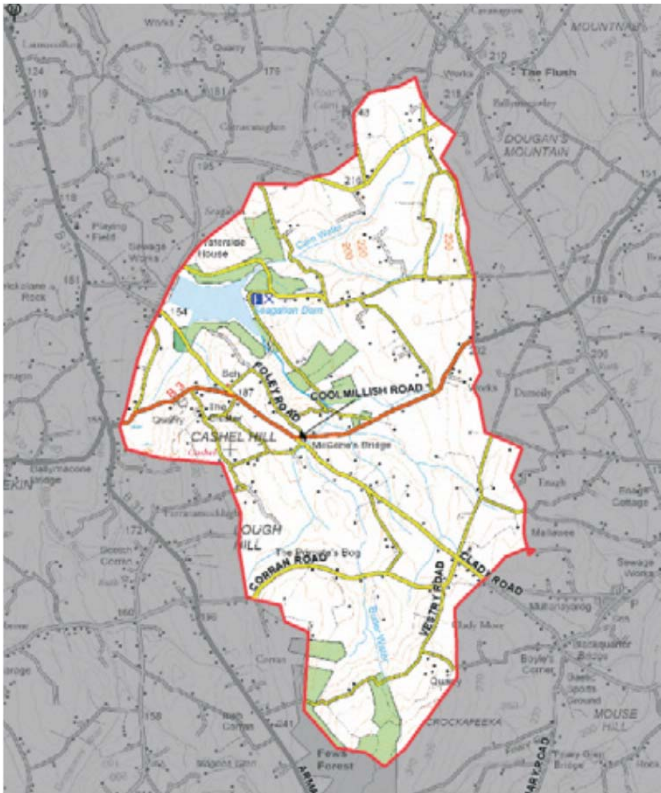


Weed-Wiping Trial – “Rush solution without pollution”



- Free weed-wiping service provided by NI Water
- Limited to Seagahan Catchment, Co Armagh and Glenhordial Catchment, Co Tyrone
- Project managed by NI Water Farm Liaison Officer
- We encourage all farmers in the catchment area not to use any MCPA on land in the catchment for the duration of the projects.
- NI Water working closely with The Water Catchment Partnership and the farming industry
- Both projects demonstrate the benefits of working together with farmers
- It is to everyone's advantage to make this type of scheme a success – Both NI Water and the farmer

Seagahan Drinking Water Catchment



- Relatively small catchment (3200 acres approx)
- Free weed-wiping service targeting approximately 600 – 800 acres of rush
- No cross- border land in catchment
- History of high levels of MCPA in Seagahan Reservoir
- Water drains to the reservoir via three feeder streams



Rush solution without pollution

Seagahan 2017:

- Roll-out event at Ballymacnab community hall with 60 farmers attending
- 40 Farmers signed up to the project
- Weed-wiping prevented farmers spraying MCPA across 630 acres of the catchment
- 426 acres were treated effectively by the weed-wiping contractor
- Prevented 535 litres of MCPA being applied in the Seagahan catchment area



Rush solution without pollution

Seagahan 2018 to date;

- 485 acres of rush have been treated effectively by the weed-wiper
- Prevented 648 litres of MCPA being applied in the Seagahan catchment area
- 2017 treatments proved very effective



Weed-Wiping - Before and After



May 2017



June 2017



July 2017



Weed-Wiping - Before and After



April 2017



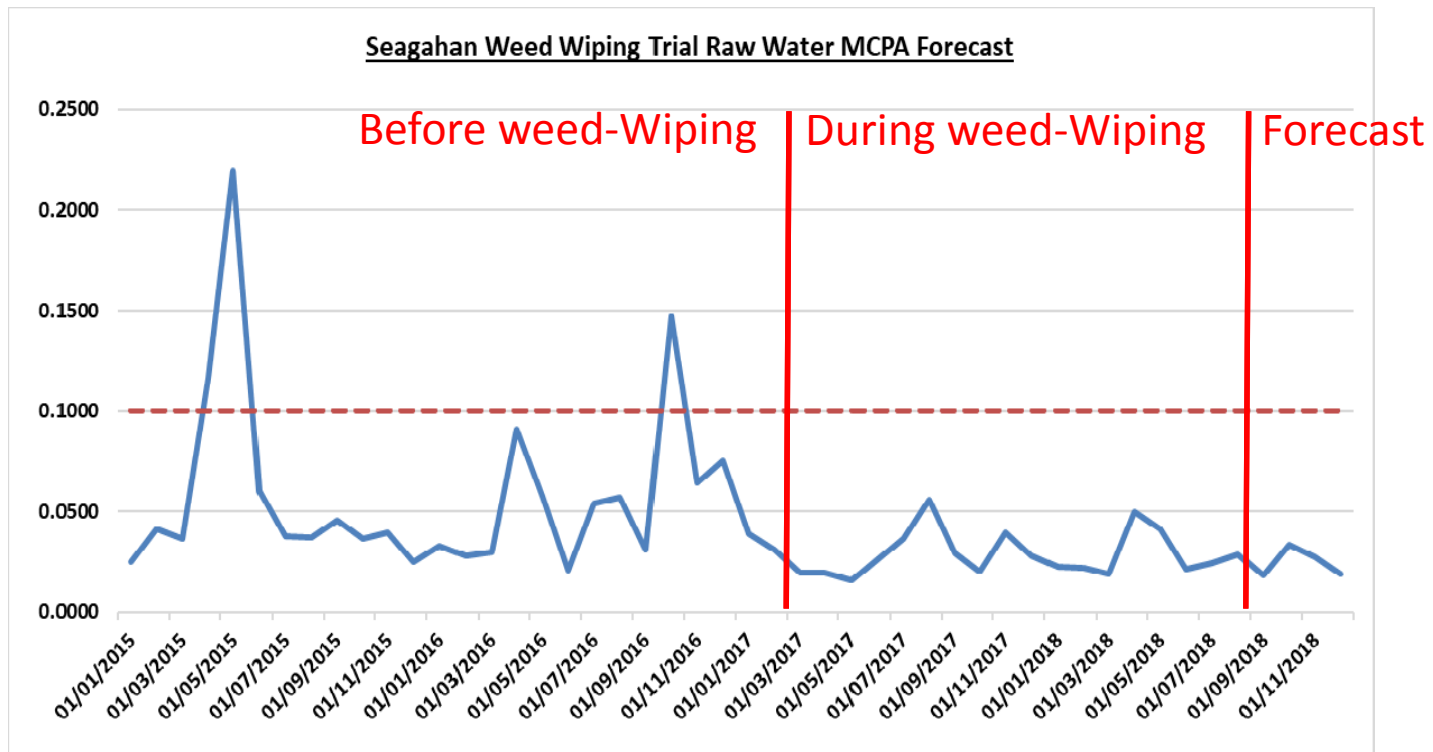
September 2017



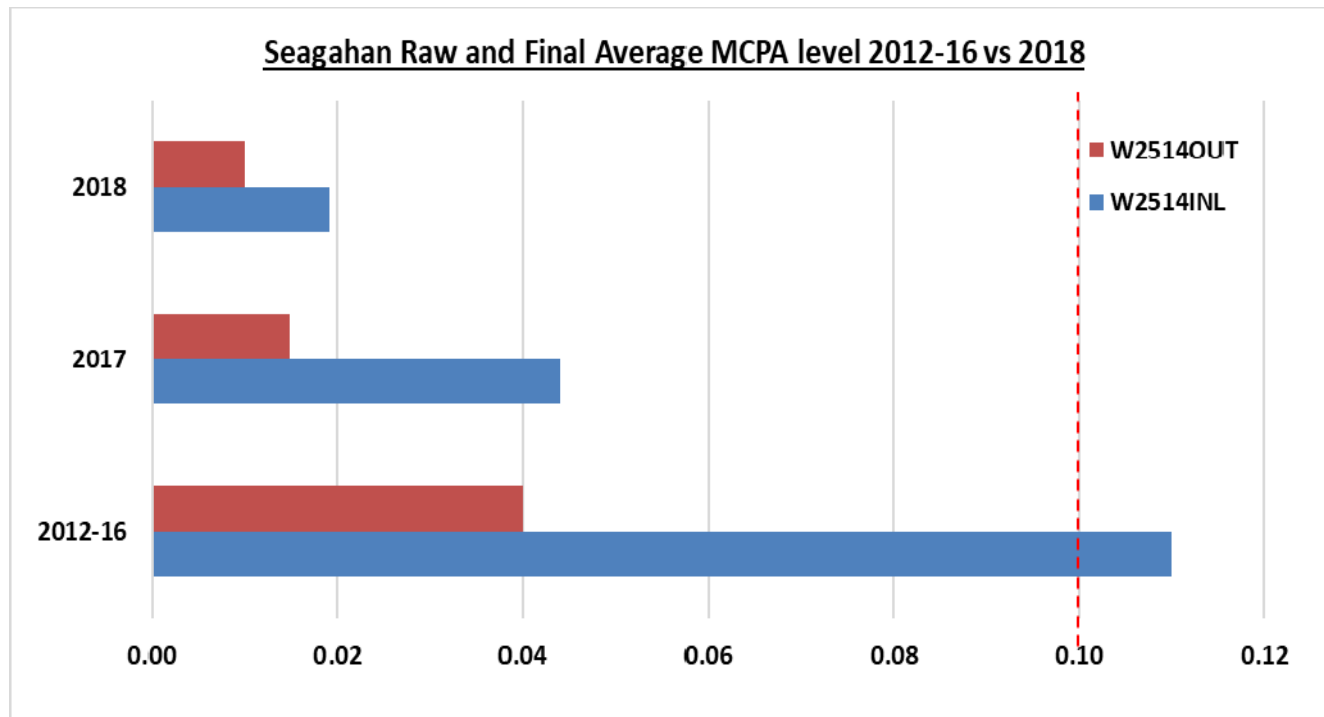
October 2018



Weed-Wiping – Water quality



Weed-Wiping – Water quality



NI Water benefits:

- MCPA levels were less than half of that in previous years
- Water quality was of a high standard
- Water treatment costs reduced

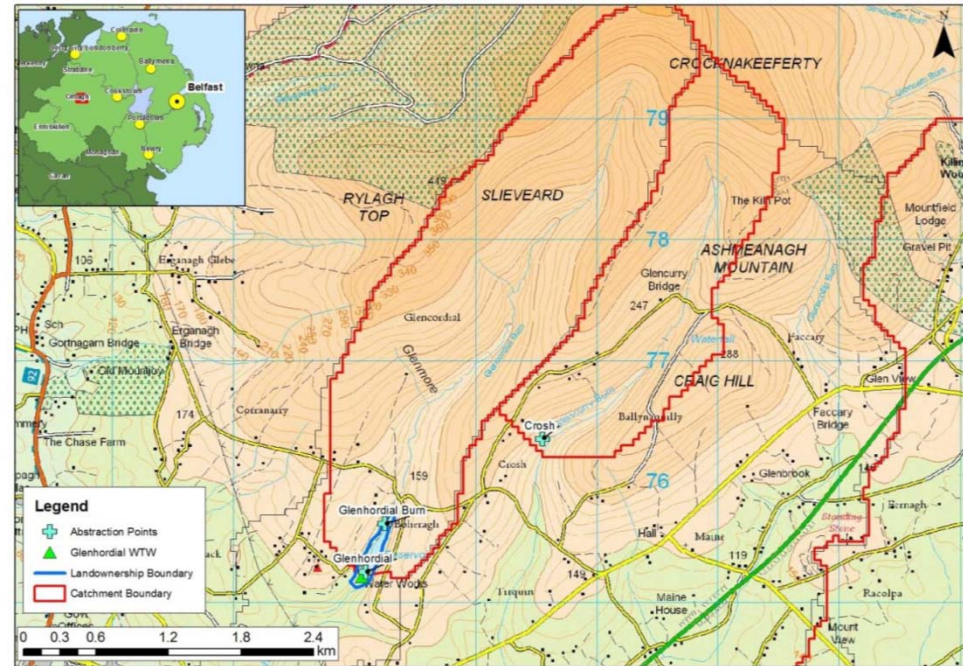
Farmer Benefits:

- Effective rush kill
- Basic payments secured
- Showed that weed-wiping with glyphosate is more effective than spraying with MCPA
- Showed that by working together we can help each other and the environment

Glenhordial Drinking Water Catchment Area

Background;

- Located outside Omagh County Tyrone
- Targeting the Glenhordial and Crosh Catchment areas
- Total land area of 2,375 acres (961 hectares)
- High levels of MCPA recorded in 2017
- Free weedwiping service offered over a 4 year period
- 25% of land treated each year with follow up treatments available.

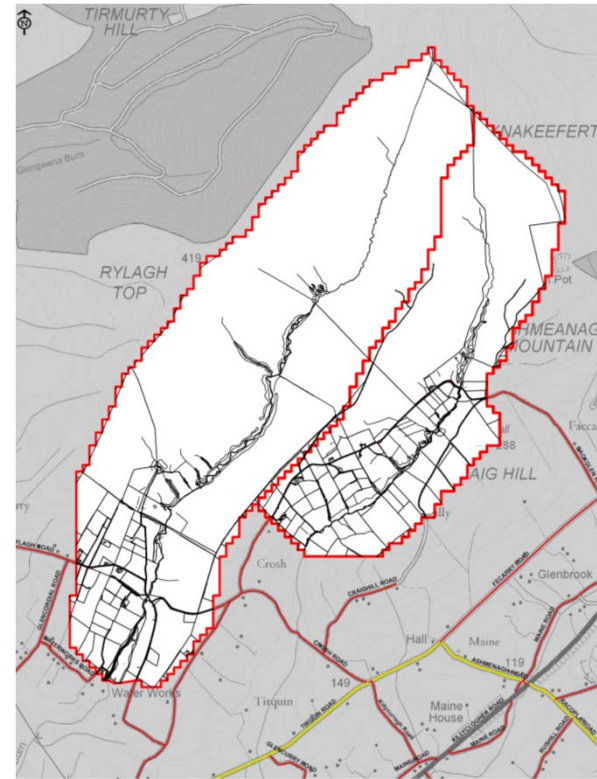


Rush solution without pollution

Glenhordial 2018 to date

- Roll-out event at community hall with 20 farmers attending
- 10 farmers signed up to the project
- Weed-wiping service prevented farmers spraying MCPA across 550 acres of rush on their land
- 103 acres of rush treated effectively using a weed-wiper in 2018
- Prevented 137 litres of MCPA being applied in the Glenhordial catchment area

©NI Water 2017



Weed-Wiping - Before and After



June 2018



September 2018



Weed-Wiping – Achievements/Benefits

- Water Quality benefits - Marked decrease in MCPA found in raw water, a reduction of more than 50% in 2017 and 75% in 2018.
- Cost – Project shown to be cost effective
- Project development and implementation – Showed that NIW have the capabilities and governance structure to allow this type of work
- Partnership Working – NI Water worked closely with the WCP, adding to the success of the project
- Contractor selection – Local contractor personal relationship with the farmers and knowledge of area. Close contact between farmer/NIW/contractor
- GIS – APP developed for easy monitoring of areas treated
- Rush Reduction – A successful rush reduction between 60% and 95%
- Pesticide choice – The pesticide ‘Round-up Energy’ proved very successful for the rush
- Feedback from farmers, UFU and PR has been excellent

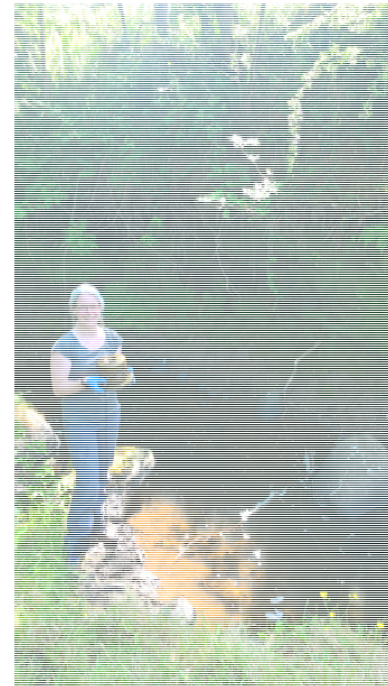


Passive Sampler Deployment

- Chemcatcher is a passive sampling device which monitors pollutants in water
- Location - Ballinrees Drinking Water Catchment Area
- 6 Sites - River Bann
 - Aghadowey River
 - Agivey River
 - Eden Burn
 - Drumawhiskey River
 - River Rhee
- Duration – Chemcatcher deployment ran from April to October
- Capabilities – Results will allow NIW to focus resources and use a targeted approach at a sub catchment level to address the pesticide problem



Passive Sampler Deployment



**“Stop and think about the water you drink
.....Use Pesticides Responsibly”**

Thank You

