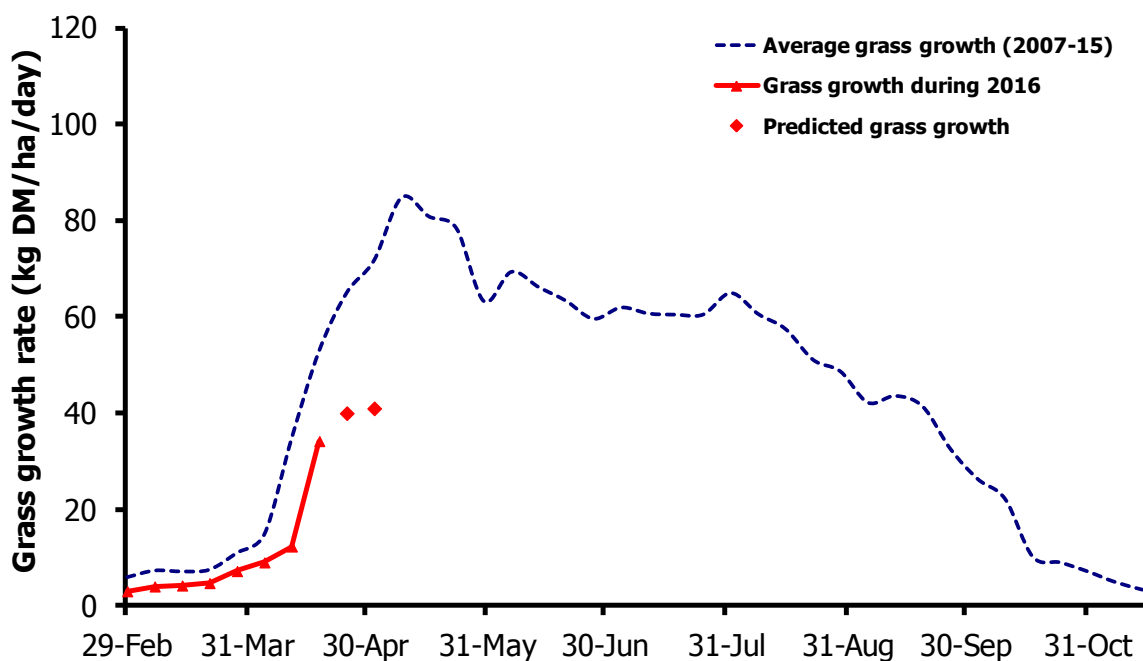


GrassCheck

Week beginning 18 April 2016



Grass growth and quality measured from swards at Hillsborough and Greenmount

Grass Growth (kg DM/ha/day)*		
Previous 3 weeks	18 Apr	34
Predicted	25 Apr	40
	2 May	41

* 270 kg N/ha/year applied

Grass Quality	
Dry matter (%)	15.9
ME (MJ/kg DM)	11.8
Crude protein (%)	19.2
Sugars (% DM)	14.2

Management notes.

- Although not completely dry, the weather during the past week has allowed ground conditions to improve, although they remain challenging on many farms.
- The cold weather continues to keep growth well below seasonal averages, and the forecast indicates this trend will continue well into late April.
- Optimising the intake of grazed grass should now be the main aim, however the opportunities for grazing vary widely between farms.
- Whilst conditions are not suitable for full-time grazing in many cases, use extended grazing techniques as required to kick start the grazing season.
- Grazing lighter covers for 2-3 hour durations should be the starting point to allow cows to adjust to grazing, with cows turned out with an 'edge' to their appetite.