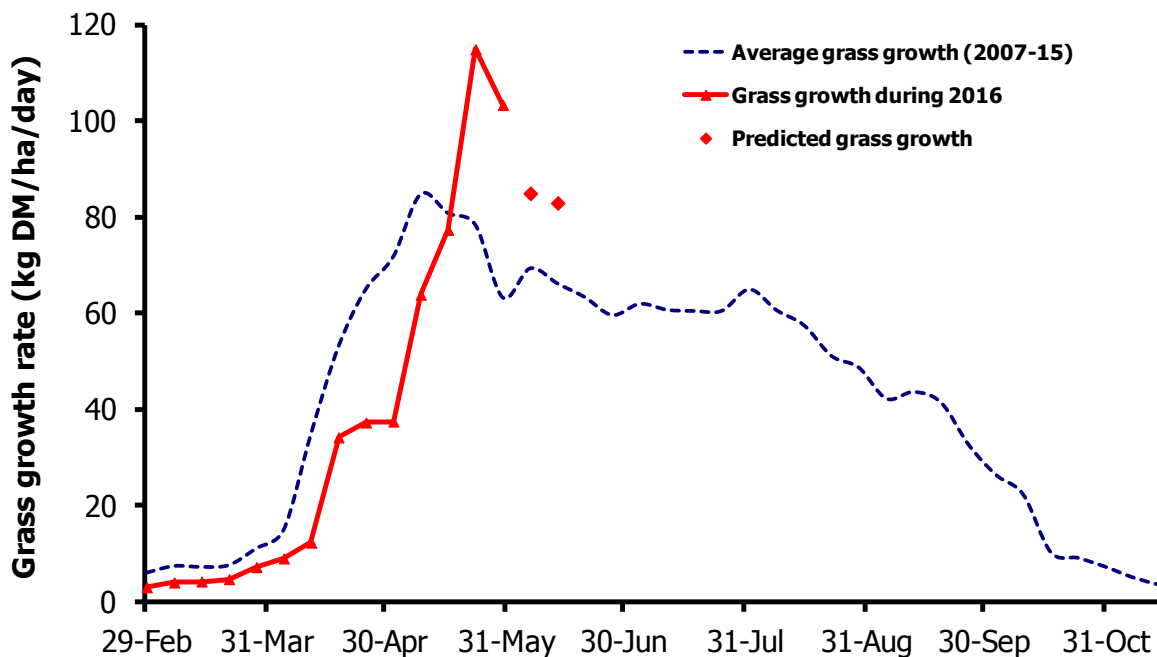


# GrassCheck

Week beginning 30 May 2016



Grass growth and quality measured from swards at Hillsborough and Greenmount

Grass Growth (kg DM/ha/day)*		
Previous 3 weeks	30 May	103
Predicted	6 June	85
	13 June	83

\* 270 kg N/ha/year applied

Grass Quality	
Dry matter (%)	14.5
ME (MJ/kg DM)	11.2
Crude protein (%)	18.5
Sugars (% DM)	12.0

## Management notes.

- Grass growth has reached its peak and is now declining, albeit growth rates are well above average for the time of year, as the graph above shows.
- A period of low rainfall is forecast for early June, so a deficit of soil moisture may lead to a rapid decrease in growth and an increase in grass dry matter content.
- Fibre content has been relatively high over the past two weeks with the high growth rates, but should now decline and subsequently ME should increase.
- Grazing conditions are excellent, so maximise production from grass.
- Continue to assess grass supply and if necessary cut paddocks immediately to get them back into the grazing cycle.
- Take action now as required, to maintain grass quality into June.