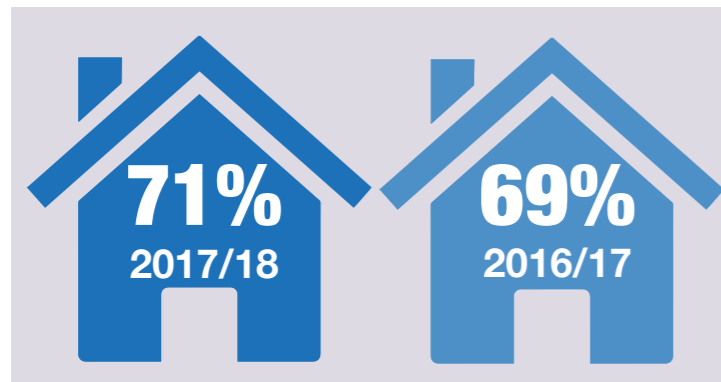
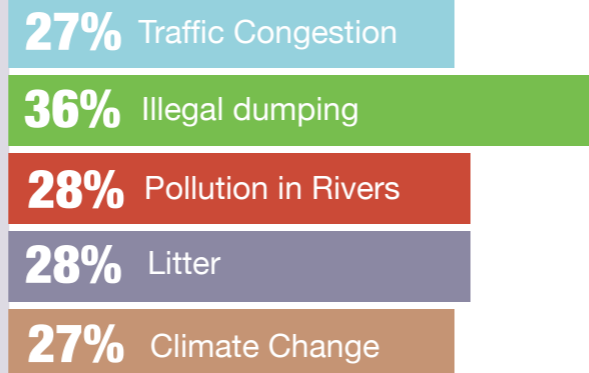


# Environmental Statistics

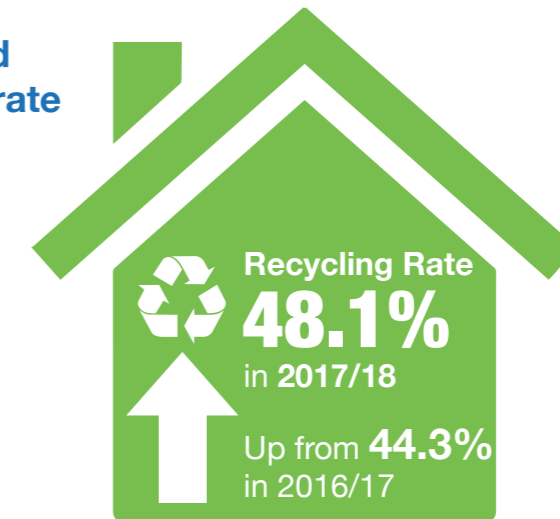
**1** Households concerned about the environment 2017/18 and 2016/17



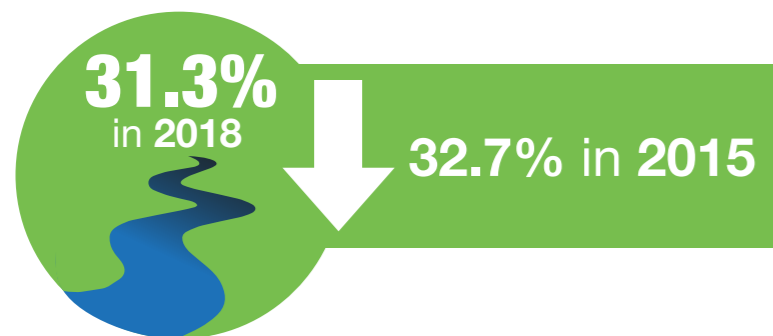
Problems considered most important



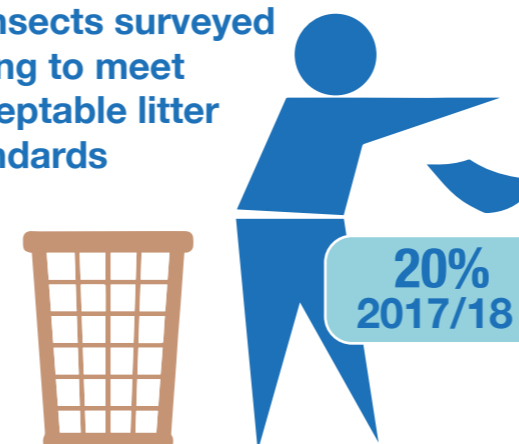
**2** Household recycling rate 2017/18



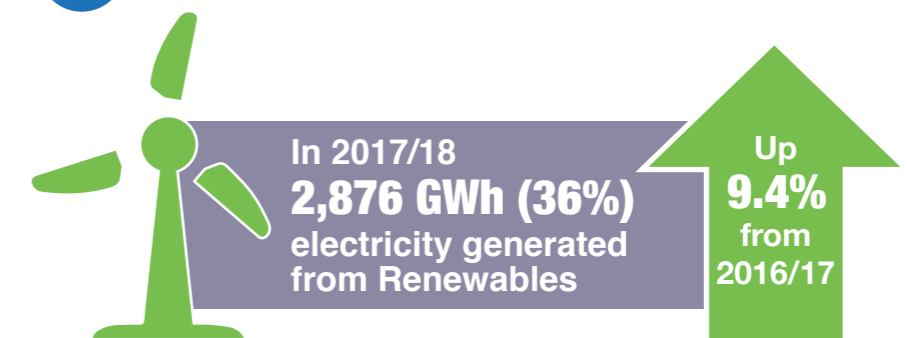
**3** NI river bodies classified as 'high/good quality'



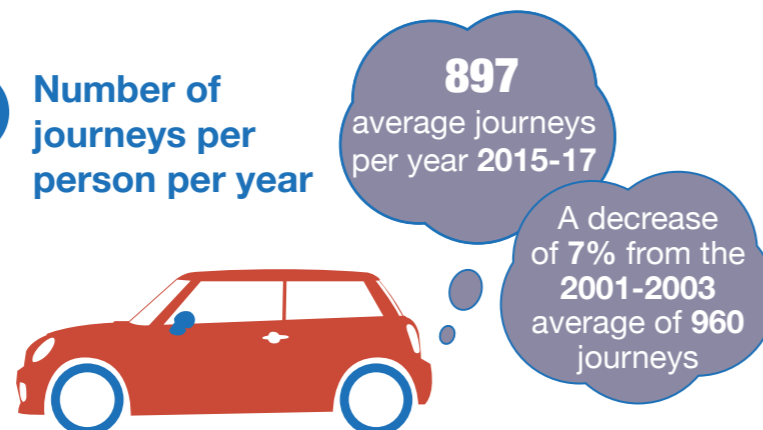
**4** Transects surveyed failing to meet acceptable litter standards



**5** Renewable energy generation in 2017/18



**6** Number of journeys per person per year



**7** Beaches monitored in NI 2015 - 2018

