

A NATIONAL STATISTICS PUBLICATION

National Statistics are produced to high professional standards set out in the National Statistics Code of Practice. They undergo regular quality assurance reviews to ensure that they meet customer needs. They are produced free from any political interference.

For general enquiries about National Statistics, contact the National Statistics Public Enquiry Service on 020 7533 5888, Minicom: 01633 812399, E-mail: info@statistics.gov.uk, Fax 01633 652747, Letters: room DG/18, 1 Drummond Gate, LONDON SW1V 2QQ

You can also find National Statistics on the internet – go to www.statistics.gov.uk

Department of Agriculture and Rural Development

Economics and Statistics Division

THE AGRICULTURAL CENSUS

IN

NORTHERN IRELAND

RESULTS FOR JUNE 2000

PREFACE

This publication presents detailed analyses of the results of the Northern Ireland Agricultural Census for June 2000 as well as time series data from 1986 to 2000.

The data set includes geographical indicators which allow data to be produced for any area which can be defined in terms of electoral ward or by grid reference co-ordinates. This facilitates small area analyses which may be carried out on request. There is, however, a constraint in that these analyses will not be provided if this will lead to data for individual farms being identified. Enquiries should be addressed to Ivor Graham on 028 90524850.

T F STAINER

Chief Agricultural Economist

November 2000

Department of Agriculture and Rural Development
Economics and Statistics Division
Dundonald House
BELFAST
BT4 3SB

CONTENTS

	Page
Section 1 Introduction	3-6
Section 2 Terms and definitions	7-12
Section 3 Northern Ireland totals 1986 - 2000	13-28
Section 4 Farm structure, 2000	29-33
Section 5 Farm enterprises, 2000	35-42
Section 6 District Council Area statistics, 2000	43-51
Section 7 Rural District and County statistics, 2000	53-61
Section 8 Less Favoured Area statistics, 2000	63-70

SECTION 1

INTRODUCTION

- 1.1 Census coverage
- 1.2 History of the agricultural census
- 1.3 Variations of the census system
- 1.4 Comparisons with other countries

SECTION 1: INTRODUCTION

1.1 CENSUS COVERAGE

The June 2000 Census was conducted by means of a full census of all farm businesses in Northern Ireland whereas those in 1998 and 1999 were conducted by means of sample surveys. Estimates were made for the crop areas, livestock and labour numbers for farms which failed to return their 2000 census form. For the most part these estimates were based on the latest return from each farm. However, special arrangements were made whereby all farms which had pigs or 5,000 or more poultry in 1999 and which failed to make a return in 2000 were telephoned for the information.

The population of farms to which these census statistics refer includes all active farm businesses having one or more hectare of farmed land, whether owned, leased or taken in conacre, and those with under one hectare having any cattle, sheep or pigs or with significant poultry or horticultural activity.

The main results of the census, showing the total areas of each crop and total numbers of each type of livestock, were published in a Press Release on 7th November, 2000. Further analyses are shown in this booklet, including details of the numbers, types and sizes of farms, the numbers of farms participating in each of the main enterprises and the size distribution of these enterprises. Data are also shown for the main geographical units below Northern Ireland level, namely District Council Areas, Rural Districts and Counties and for the three Less Favoured Area categories.

Section 3 of this report presents data on the areas of crops and numbers of livestock over the past 15 years, from 1986 to 2000.

1.2 HISTORY OF THE AGRICULTURAL CENSUS

The first agricultural census in Ireland was conducted in 1847, in response to the need for information on the famine conditions at that time. The main use of the census continues to be to provide information for those involved in the industry or responsible for agricultural policy. With data stretching back over 150 years, the records provide an interesting insight into the changes which have taken place in farming. The statistics below, relating to 50 year intervals, show how Northern Ireland has changed from a mixed farming economy to one dependent on grazing livestock.

Crop Areas and Livestock Numbers in Northern Ireland, 1850-2000

	1850	1900	1950	2000
<i>Crop areas</i> (‘000 ha)				
Cereals	294	162	145	41
Potatoes	80	74	72	6
Flax	23	15	9	0
Hay and pasture	n.a.	797	684	829

*Livestock
numbers
(‘000 head)*

Cattle	666	805	990	1,676
of which Cows	n.a.	n.a.	305	602
Sheep	151	407	717	2,741
Horses	n.a.	112	51	10
Pigs	176	224	523	413
Poultry	1,557	4,591	20,724	15,376

1.3 VARIATIONS IN THE CENSUS SYSTEM

Since 1950, there have been a number of changes in the coverage of the census and the way the census data were collected. These are summarised below:

Years	Census methods and coverage
Until 1954	Census information was collected by police enumerators who identified and visited all farms, including those under one acre. This information was given to them orally by the farmer and recorded in special books.
1954- 1972	A postal census was introduced in 1954. This used the list of farmers which had been identified in the 1953 census, but included only those of one acre or more . From this time onwards a distinction was made between “ main ” holdings which were included in the census and “ minor ” holdings (i.e. those under 1 acre) which were surveyed on a sample basis using fewer questions. Estimates for the minor holdings were made of their total crop areas and livestock numbers but these holdings were not included in the count of farms.
1973- 1980	In 1973, in conformity with a similar change in the rest of the United Kingdom, an alteration was made in the scope of the census in Northern Ireland. From then until 1980, the main census covered holdings which had at least 10 acres of land plus any below that size which had any full-time agricultural workers or whose livestock and cropping amounted to an annual estimated labour requirement of more than 40 man-days. This removed some 7,700 holdings from the old register but, at the same time, included a number of “minor” holdings of less than one acre. Arising from these adjustments the net reduction in the number of holdings covered in the main census was some 5,500.
1981- 1996	A new system of farm classification and changes to the minimum threshold were introduced in 1981. This new threshold restricted the census to holdings which had (a) a total land area (owned or taken on long-term lease) of 6 hectares or more or (b) any full-time workers other than the farmer or (c) a farm business size of 1,000 ecus of Standard Gross Margin. This change resulted in the exclusion of a further 6,690 “minor” holdings from the main census between 1980 and 1981.

- 1997 In 1997 the basis of the Northern Ireland Agricultural Census was changed from a “census register” to a central register of all of the Department’s “clients”. The change was made possible as a result of the introduction of IACS¹ and of work undertaken in DANI to streamline administrative functions. This resulted in a common means of identification of clients across all schemes, with each farmer who is in contact with the Department being allocated a unique Client Reference Number and each “Client” being linked to a Business Identifier. The population surveyed in the 1997 census consisted of one “Client” in each business for which a census return with crops and/or livestock was obtained in the preceding year or which had received a subsidy in respect of crops or livestock during the preceding 15 months. Also included were those with a milk quota and those known by DANI to be engaged in the production of pigs, poultry, potatoes or horticultural crops. The distinction between “main” and “minor” holdings was discontinued.
- 1998 Sampling was introduced and forms were issued to only half the farms categorised as “Very Small”. The records which were aggregated to provide the published results include 1998 returns from the sampled farms and 1997 returns from those not in the sample for 1998. The latter were trended to reflect the changes between 1997 and 1998 as recorded by the sampled farms. New information led to the addition of a further 166 pig farms involving no owned land; estimates of pig numbers in previous years were revised.
- 1999 The same level of sampling applied as in 1998 but the survey included all pig farms.
- 2000 A full census of all farm businesses in Northern Ireland was carried out.

1.4 COMPARISONS WITH OTHER COUNTRIES

A separate census is carried out for each country of the United Kingdom and the results are subsequently published by the Department responsible. These statistics are then brought together and published annually in *“The Digest of Agricultural Census Statistics, United Kingdom”* (The Stationery Office).

To mark the 150th anniversary of the agricultural census in Ireland, a special book was issued showing statistical information on crop areas and livestock numbers in Ireland for each year from 1847 to 1996. *“Farming since the Famine: Irish Farm Statistics 1847-1996”* (Central Statistics Office, Cork, September 1997) includes data for the territory which became Northern Ireland.

¹ The EU Integrated Administration and Control System

SECTION 2

TERMS AND DEFINITIONS

- 2.1 Farms and farm structure
- 2.2 Agricultural labour force
- 2.3 Other terms
- 2.4 Symbols used

SECTION 2: TERMS AND DEFINITIONS

2.1 FARMS AND FARM STRUCTURE

Farms

In the 2000 census, a farm² was defined in accordance with the definition adopted for European Union surveys on the structure of agricultural holdings, namely:

a single unit, both technically and economically, which has a single management and which produces agricultural products

Only those with at least one hectare of agricultural land or with any cattle, sheep, pigs or significant poultry or horticultural crops were defined as a farm.

Farm business size

Farm business size is determined by calculating each farm's total Standard Gross Margin (SGM). The gross margin of an enterprise is its total output less the variable costs which are directly attributable to it. Standards or norms have been calculated for all major enterprises. The total SGM for each farm is calculated by multiplying its crop areas and livestock numbers by the appropriate SGM coefficients and then summing the result for all enterprises on the farm.

To show year-to-year changes in business size, the enterprise SGM coefficients are held constant for a number of years. Those currently used within the UK are based on average prices during the period 1987-89. Because the system of classifying business size was developed for use within the EU statistical network, SGMs are measured in European Currency Units (Table 1) (ECU). In UK agricultural statistics, business size is described in terms of five SGM size bands.

UK agricultural statistics business size bands

SGM size	SGM (1987/89) (ECU*)
Very Small	< 9,600
Small	9,600 - < 48,000
Medium	48,000 - < 120,000
Large	120,000 - < 240,000
Very Large	240,000 or more

* 1 ECU = £0.68 in 1987/89.

Since there are very few farms in the Very Large size range in Northern Ireland, these are included in the Large category in Census analyses.

² In UK agricultural statistical publications the terms "holdings" and "farms" are used synonymously but in Northern Ireland, where many landowners let out all their land and take no part in agriculture, the former term refers to the areas under single ownership and the latter to the areas farmed in separate units, i.e. after adjustment for land let out or taken in conacre. Farms exclude holdings which take no part in farming.

In broad terms, Very Small farms are not large enough to provide full-time employment for one person, Small farms are generally 1-2 person businesses, Medium farms are 2-3 person businesses and Large farms will consist of 3 or more persons.

Farm business type

The system of classifying farms according to farm type is set out in Commission Decision 85/377/EEC. This specifies 72 EC types determined according to the distribution of SGM between enterprises - of which 65 are applicable in Northern Ireland. For UK statistical purposes, these 65 types are grouped into 9 "robust" categories which have particular relevance to UK conditions. These are:

Cereals	Farms with more than two thirds of their total SGM in cereals, oilseed and set aside.
General cropping	Farms which do not qualify as cereals farms but have more than two thirds on their total SGM in arable (not horticultural) crops or in a mixture of arable and horticultural crops and where arable crops account for more than one third of the total SGM.
Horticulture	Farms with more than two thirds of their total SGM in horticultural crops (excluding specialist mushroom growers).
Pigs & poultry	Farms with more than two thirds of their total SGM in pigs and/or poultry.
Dairy	Farms with more than two thirds of the total SGM in dairying (including associated young stock).
Cattle & sheep (LFA)	Farms wholly or mainly in the Less Favoured Areas which do not qualify as Dairy farms but have more than two thirds of their total SGM in cattle and sheep.
Cattle & sheep (Lowland)	Farms entirely or mainly outside the Less Favoured Areas, which do not qualify as Dairy farms but have more than two thirds of their total SGM in cattle and sheep.
Mixed	Farms which have no dominant enterprise and do not fit into the above types.
Other types	Farms that specialise in enterprises which do not fit the definitions of mainstream agricultural activities. These enterprises include activities such as specialist mushrooms, specialist goats and specialist horses. This category also includes farms which are unclassified because they have no crops or stock at June (but which made hay/silage or intended to restock at a later date).

A fuller description of the system is given in "*Farm Incomes in the United Kingdom*" 1996/97 Edition (TSO, 1998) and in "*The Digest of Agricultural Census Statistics, UK 1997*" (TSO, 1998).

2.2 AGRICULTURAL LABOUR FORCE

In conjunction with the other UK Agricultural Departments, an in-depth investigation was carried out in 1995 into the quality of statistics on the agricultural labour force. This indicated that, while the number of workers recorded on each census form was generally realistic, there was confusion about the categories of workers into which farmers were asked to record themselves and other persons working on their farm. Consequently, the questions were revised to provide clearer definitions of the various categories and to bring these more into line with the requirements of data users. The definitions now used are:

Regular workers Those who work on the farm during at least 20 weeks per year.

Full-time Working 30 hours per week or more.

Part-time Working less than 30 hours per week.

Casual workers Those who work less than 20 weeks per year.

2.3 OTHER TERMS

Conacre	A system of short-term lettings, nominally for 11 months or 364 days
Less favoured areas (LFA)	Areas of poorer agricultural land which qualify for special aid under EU schemes
SDA	Severely Disadvantaged Areas, i.e. land classed as LFA under Directive 75/268/EEC
DA	Disadvantaged Areas, i.e. land classed as LFA under Directive 84/169/EEC.
Area farmed	Area farmed by each business at 1 June. Agricultural land which is taken in conacre by persons operating a business is included but owned land which they let out in conacre is not. Common rough grazing is excluded
Crops & grass areas	Total area excluding rough grazing, set-aside, farm woodlands and non-agricultural land.
Livestock numbers	Numbers on farms at 1 June
Cereals	Barley, wheat, oats and mixed corn
Dairy cows	Cows in milk or in calf, mainly for producing milk for sale; includes heifers in milk but excludes in-calf heifers.
Beef cows	Cows in milk or in calf, mainly for producing calves for beef; includes heifers in milk but excludes in-calf heifers.
Breeding ewes	Female sheep over one year which lambed in the current season or are for future breeding. (In 1995 and earlier years, only those to be put to the ram in the current year were included)
Sows & gilts	Includes in-pig gilts but excludes gilts not yet in pig.
Total poultry	Hens, pullets, breeding fowl, broilers, turkeys, geese, ducks and other fowl

2.4 SYMBOLS USED

-- Not available

..... Figures combined

2.5 STANDARD GROSS MARGINS

		ecu	
Crops	Wheat	776	per ha
	Barley	582	per ha
	Oats	598	per ha
	Mixed corn	473	per ha
	Potatoes	2,111	per ha
	Oilseed rape	793	per ha
	Linseed	1,168	per ha
	Open-air horticulture		
	Vegetables	5,095	per ha
	Fruit	2,252	per ha
	Flowers/nursery	15,350	per ha
	Glasshouses:		
	Vegetables	28,386	per ha
	Flowers	137,513	per ha
	Mushrooms	4,686	per 100 m ²
	Grass/ fodder crops	0	per ha
Setaside	261	per ha	
Other crops	473	per ha	
Cattle	Dairy cows	958	per head
	Beef cows	316 (357)	per head (in LFA)
	Heifers 2 yrs +	34	per head
	Heifers 1-2 yrs	97	per head
	Bulls/steers 2 yrs +	56	per head
	Bulls/steers 1-2 yrs	95	per head
	Calves under 1 year	51	per head
Sheep	Ewes	68 (62)	per head (in LFA)
	Other sheep	1	per head
	Lambs	0	per head (included with ewe)
Horses	Mares, stallions	474	per head
	Others	0	per head
Pigs	Sows	185	per head
	Piglets (under 20kg)	0	per head (included with sow)
	Other pigs	18	per head
Poultry	Hens	107	per 100
	Broilers	54	per 100
	Others	184	per 100

- Notes:**
- 1 These SGMs apply to crop areas and livestock numbers at June (not to the annual throughput).
 - 2 At the time of calculation, 1 ecu = £0.68 (1987-89)
 - 3 1,200 ecu of SGM=1 European Size Unit (1 ESU).

SECTION 3

NORTHERN IRELAND TOTALS, 1986-2000

Tables and charts showing the crop areas, livestock numbers and numbers of farmers and other workers in each year from 1986 to 2000.

Note that in 1997 there were major revisions to the data for 1986 to 1996. Full details of this are given in Section 1.3. In 1998 a further revision was made to numbers of pigs in the census and data in table 3.4 were revised for each year up to and including 1997. In 2000 there were no additional changes to data for earlier years.

Table 3.1	Crop areas
Table 3.2	Cattle and calves
Table 3.3	Sheep, horses, ponies and goats
Table 3.4	Pigs and poultry
Table 3.5	Farmers and other workers
Chart 3.1	Crops
Chart 3.2	Grass
Chart 3.3	Cereals
Chart 3.4	Total cattle
Chart 3.5	Dairy cows and beef cows
Chart 3.6	Dairy heifers in calf and beef heifers in calf
Chart 3.7	Total pigs and fattening pigs
Chart 3.8	Sows and gilts
Chart 3.9	Total sheep and ewes
Chart 3.10	Total poultry
Chart 3.11	Laying flock and broilers
Chart 3.12	Total labour force
Chart 3.13	Farmers and partners
Chart 3.14	Other workers

Table 3.1 Crop areas in Northern Ireland 1986-2000

	('000 hectares)							
	1986	1987	1988	1989	1990	1991	1992	1993
Grass								
Under 5 yrs old	235.6	232.1	200.1	194.1	195.3	191.1	185.4	199.5
Over 5 yrs old	561.2	565.2	597.1	601.6	600.7	613.1	613.0	615.9
Total grass	796.8	797.2	797.3	795.7	796.0	804.2	798.4	815.4
Hill or rough land	178.4	179.4	187.8	190.3	186.8	186.7	179.2	177.1
Cereals								
Oats: winter	n.a.	n.a.	n.a.	n.a.	n.a.	n.a.	n.a.	n.a.
Oats: spring	n.a.	n.a.	n.a.	n.a.	n.a.	n.a.	n.a.	n.a.
Total oats	2.1	2.1	2.4	2.5	2.3	2.4	2.0	2.0
Wheat	3.9	5.2	5.2	5.0	6.0	6.1	7.6	6.9
Barley (winter)	4.3	6.0	5.6	4.9	4.5	4.8	5.5	6.3
Barley (spring)	44.7	40.1	38.2	36.4	32.9	33.4	32.4	33.2
Mixed corn	0.3	0.3	0.3	0.3	0.1	0.2	0.1	0.1
Total cereals	55.4	53.8	51.6	49.1	45.9	46.9	47.8	48.5
Other field crops								
Potatoes	11.9	12.7	12.1	10.4	10.8	10.9	11.1	9.2
Arable crop silage	2.5	2.1	2.5	1.4	1.3	1.5	1.5	1.6
Other crops	0.9	0.7	0.6	0.8	0.7	0.9	0.9	1.3
Total other field crops	15.6	16.4	16.3	13.5	14.0	14.5	14.6	13.0
Horticultural crops								
Fruit	2.0	2.0	1.9	1.9	1.9	1.9	1.9	1.8
Vegetables	1.3	1.4	1.6	1.4	1.4	1.3	1.5	1.5
Flowers	0.1	0.1	0.1	0.1	0.1	0.1	0.1	0.1
Total horticultural crops	3.4	3.6	3.6	3.5	3.4	3.4	3.6	3.3
Total crops	74.5	73.8	71.5	66.1	63.4	64.7	65.9	64.8
Total crops & grass	871.3	871.0	868.8	861.8	859.3	868.9	864.4	880.2
Other land								
Set-aside	n.a.	n.a.	n.a.	n.a.	n.a.	n.a.	n.a.	0.9
Woods and plantations	7.9	8.2	8.6	9.0	9.3	9.3	9.5	8.2
Other land	19.9	19.3	20.0	20.3	19.1	18.8	19.2	13.5
Total other land	27.8	27.5	28.6	29.3	28.3	28.1	28.6	22.6
TOTAL AREA FARMED	1,077.4	1,077.9	1,085.2	1,081.4	1,074.5	1,083.8	1,072.2	1,079.9

Note : An estimated allocation of grass areas into those under and over 5 years was made for years prior to 1989.

(*'000 hectares*)

1994	1995	1996	1997	1998	1999	2000	
							Grass
196.1	195.0	190.6	181.9	155.6	140.9	141.6	Under 5 yrs old
616.9	622.4	628.7	643.1	675.0	697.2	687.9	Over 5 yrs old
813.0	817.4	819.3	825.1	830.6	838.1	829.4	Total grass
176.3	170.9	169.0	164.1	159.1	158.7	156.5	Hill or rough land
							Cereals
0.8	0.9	0.9	1.0	1.1	0.7	1.0	Oats: winter
1.4	1.4	1.3	1.4	1.5	2.0	2.0	Oats: spring
2.2	2.3	2.2	2.4	2.6	2.8	2.9	Total oats
7.2	6.6	6.9	6.9	7.1	3.3	5.0	Wheat
6.0	6.8	7.3	7.7	7.7	5.1	5.2	Barley (winter)
28.3	26.7	26.9	28.7	27.1	30.6	27.4	Barley (spring)
0.1	0.1	0.1	0.1	0.1	0.2	0.2	Mixed corn
43.8	42.5	43.4	45.8	44.7	41.9	40.7	Total cereals
							Other field crops
8.7	9.0	8.8	7.8	7.5	7.5	6.8	Potatoes
1.8	2.0	1.6	1.7	2.0	2.4	2.2	Arable crop silage
1.1	0.9	0.9	0.8	1.0	0.9	0.9	Other crops
12.3	12.4	11.5	10.7	11.2	11.2	10.1	Total other field crops
							Horticultural crops
1.8	1.7	1.7	1.6	1.7	1.7	1.6	Fruit
1.4	1.3	1.4	1.4	1.4	1.5	1.5	Vegetables
0.1	0.1	0.1	0.1	0.2	0.1	0.1	Flowers
3.3	3.2	3.2	3.1	3.2	3.4	3.3	Total horticultural crops
59.4	58.1	58.2	59.7	59.1	56.5	54.1	Total crops
872.4	875.5	877.5	884.8	889.8	894.5	883.5	Total crops & grass
							Other land
1.9	1.7	1.5	1.0	1.1	2.0	2.5	Set-aside
8.2	8.1	8.2	8.2	8.2	8.2	8.6	Woods and plantations
12.8	11.5	11.4	10.8	10.1	9.6	9.3	Other land
22.9	21.3	21.1	20.0	19.5	19.8	20.4	Total other land
1,071.6	1,067.8	1,067.6	1,068.9	1,068.4	1,073.0	1,060.5	TOTAL AREA FARMED

Table 3.2 Cattle and calves in Northern Ireland 1986-2000

	('000 head)							
	1986	1987	1988	1989	1990	1991	1992	1993
Dairy cows								
In milk	273.0	269.6	260.5	259.0	257.2	253.2	249.5	250.5
In calf	18.9	19.2	18.5	18.2	20.4	20.9	19.9	18.9
Total	291.9	288.8	278.9	277.3	277.6	274.1	269.4	269.3
Dairy heifers-in-calf								
2 years old	25.0	22.8	22.2	20.0	18.4	18.5	19.5	21.0
1-2 years	23.5	21.5	22.4	20.3	20.8	21.7	26.4	28.0
Total	48.5	44.3	44.6	40.3	39.2	40.2	45.9	49.0
Beef cows								
In milk	192.2	184.4	194.7	216.6	230.4	244.2	252.3	260.4
In calf	31.2	36.4	36.4	35.9	38.4	41.3	43.4	47.6
Total	223.5	220.7	231.1	252.6	268.9	285.5	295.7	308.0
Beef heifers-in-calf								
2 years old	16.0	17.3	20.8	19.3	19.7	17.7	18.9	21.0
1-2 years	11.2	11.6	13.8	13.9	15.2	13.0	15.2	15.8
Total	27.2	28.9	34.7	33.2	34.9	30.7	34.0	36.9
Breeding bulls								
2 years old and over	7.2	7.2	7.4	8.1	8.8	9.5	9.6	9.7
1-2 years	3.5	3.3	3.9	4.1	4.5	4.1	4.3	4.4
Total	10.7	10.5	11.3	12.3	13.3	13.6	13.9	14.2
Other cattle								
2 years old								
Male	112.7	103.3	108.6	114.0	115.8	101.8	103.5	96.1
Females for slaughter	39.5	40.3	41.0	40.6	39.3	38.2	35.4	31.4
Females for breeding	11.7	11.4	10.8	10.4	10.7	10.3	11.0	11.8
Total	163.9	154.9	160.3	165.0	165.8	150.2	149.9	139.3
1-2 years								
Male	199.3	190.7	189.4	190.1	194.6	203.4	215.3	213.5
Females for slaughter	136.3	134.7	128.4	131.8	131.2	135.3	131.4	123.8
Females for breeding	51.6	49.6	50.0	47.1	46.3	46.5	50.0	52.7
Total	387.2	375.1	367.7	369.0	372.0	385.2	396.7	390.1
6-12 months								
Male	86.2	82.6	81.9	87.0	94.1	101.0	102.4	99.3
Female	81.1	79.6	77.3	80.0	88.1	93.1	93.0	95.0
Total	167.2	162.2	159.1	167.0	182.2	194.1	195.4	194.2
Under 6 months								
Male	132.2	126.9	132.8	133.2	136.5	142.4	139.7	139.0
Female	132.5	126.8	130.1	130.7	135.4	139.7	140.9	145.0
Total	264.7	253.8	263.0	263.9	271.9	282.2	280.6	284.1
TOTAL CATTLE	1,584.9	1,539.1	1,550.8	1,580.5	1,625.9	1,655.7	1,681.5	1,685.0

('000 head)

1994	1995	1996	1997	1998	1999	2000	
							Dairy cows
254.9	251.8	260.1	259.4	266.8	267.1	265.7	In milk
19.4	19.7	21.0	19.8	20.8	19.3	18.6	In calf
274.2	271.5	281.1	279.2	287.7	286.4	284.4	Total
							Dairy heifers-in-calf
20.6	23.9	25.1	26.7	24.5	24.4	26.0	2 years old
29.7	32.0	37.0	35.9	36.4	35.6	34.8	1-2 years
50.3	55.9	62.1	62.6	60.9	60.0	60.9	Total
							Beef cows
262.7	260.8	266.9	272.1	287.1	274.2	262.2	In milk
46.1	47.7	48.5	51.8	57.6	58.0	55.8	In calf
308.7	308.6	315.4	323.9	344.7	332.2	318.0	Total
							Beef heifers-in-calf
18.8	18.4	20.1	26.2	24.2	21.1	18.9	2 years old
13.7	14.5	15.3	20.4	16.7	13.5	12.6	1-2 years
32.5	32.9	35.4	46.5	40.9	34.6	31.5	Total
							Breeding bulls
10.1	10.3	11.1	12.2	12.9	13.0	12.6	2 years old and over
4.5	4.5	4.5	4.3	4.2	4.0	3.7	1-2 years
14.6	14.8	15.6	16.5	17.1	16.9	16.3	Total
							Other cattle
							2 years old
94.4	96.5	105.4	66.9	71.7	68.0	69.0	Male
31.3	32.1	33.5	20.6	24.3	24.2	26.4	Females for slaughter
11.6	12.8	12.5	13.7	12.6	13.5	11.4	Females for breeding
137.4	141.4	151.3	101.2	108.6	105.7	106.8	Total
							1-2 years
211.7	211.0	218.3	232.5	213.6	204.6	197.5	Male
122.9	117.3	116.7	114.9	125.4	128.8	126.9	Females for slaughter
57.0	61.6	67.1	69.9	70.6	68.7	63.4	Females for breeding
391.6	389.9	402.2	417.3	409.6	402.1	387.8	Total
							6-12 months
98.7	104.1	102.1	89.7	87.7	82.3	84.0	Male
98.9	100.1	96.5	98.6	102.4	101.8	95.7	Female
197.6	204.1	198.6	188.3	190.1	184.1	179.7	Total
							Under 6 months
135.6	135.8	146.4	139.6	143.8	136.5	138.5	Male
145.0	144.2	151.2	155.9	164.0	160.0	152.7	Female
280.6	280.0	297.6	295.5	307.7	296.5	291.1	Total
1,687.5	1,699.1	1,759.4	1,731.0	1,767.3	1,718.5	1,676.5	TOTAL CATTLE

Table 3.3 Sheep, horses, ponies and goats in Northern Ireland 1986-2000

	('000 head)								
	1986	1987	1988	1989	1990	1991	1992	1993	
SHEEP									
Ewes									
Ewes which lambed	n.a.	n.a.	n.a.	n.a.	n.a.	n.a.	n.a.	n.a.	n.a.
Others for breeding	n.a.	n.a.	n.a.	n.a.	n.a.	n.a.	n.a.	n.a.	n.a.
Total	954.9	1,030.1	1,141.2	1,271.8	1,367.5	1,395.8	1,428.3	1,408.6	
Other sheep									
Rams for service	28.2	30.6	34.6	31.7	33.9	35.0	36.1	34.4	
Not for breeding	4.2	4.7	5.2	5.8	6.3	6.4	6.5	6.5	
Lambs									
Under 1 year old	925.4	1,028.1	1,152.9	1,299.9	1,416.9	1,452.1	1,490.2	1,460.9	
TOTAL SHEEP	1,912.8	2,093.5	2,333.9	2,609.2	2,824.5	2,889.4	2,961.0	2,910.4	
HORSES AND PONIES									
Mares									
Horses	1.8	1.9	2.0	2.1	2.4	2.4	2.6	2.2	
Ponies	n.a.	n.a.	n.a.	n.a.	n.a.	n.a.	n.a.	0.6	
Total mares	1.8	1.9	2.0	2.1	2.4	2.4	2.6	2.8	
Stallions	0.1	0.1	0.1	0.1	0.1	0.1	0.1	0.2	
Other horses	3.6	3.5	3.5	3.6	4.0	4.1	4.4	3.8	
Other ponies	n.a.	n.a.	n.a.	n.a.	n.a.	n.a.	n.a.	1.8	
TOTAL HORSES & PONIES	5.5	5.5	5.6	5.8	6.5	6.5	7.1	8.6	
GOATS									
Female goats which have kidded	n.a.	n.a.	n.a.	n.a.	n.a.	3.2	2.9	2.5	
All other goats and kids	n.a.	n.a.	n.a.	n.a.	n.a.	3.0	2.5	2.3	
TOTAL GOATS	6.8	6.7	7.3	7.3	7.3	6.2	5.5	4.8	

('000 head)

1994	1995	1996	1997	1998	1999	2000	
SHEEP							
Ewes							
n.a.	n.a.	1,169.8	1,211.4	1,262.0	1,242.2	1,182.4	Ewes which lambed
n.a.	n.a.	171.8	172.7	187.8	162.7	150.2	Others for breeding
1,382.1	1,345.3	1,341.6	1,384.1	1,449.8	1,404.9	1,332.6	Total
Other sheep							
32.9	32.0	32.7	33.1	34.3	33.9	32.2	Rams for service
6.1	6.3	5.7	7.3	6.5	8.8	8.2	Not for breeding
Lambs							
1,399.7	1,369.9	1,373.2	1,455.5	1,496.0	1,461.3	1,367.5	Under 1 year old
2,820.9	2,753.5	2,753.1	2,880.1	2,986.6	2,908.9	2,740.6	TOTAL SHEEP

HORSES AND PONIES							
Mares							
2.2	2.2	2.2	2.2	2.2	2.2	2.2	Horses
0.7	0.8	0.9	0.9	0.8	0.9	0.8	Ponies
2.9	3.0	3.1	3.1	3.1	3.1	3.0	Total mares
0.2	0.2	0.2	0.2	0.2	0.3	0.2	Stallions
4.1	4.2	4.3	4.4	4.3	4.3	4.2	Other horses
1.9	2.2	2.2	2.2	2.2	2.2	2.1	Other ponies
9.1	9.6	9.8	9.9	9.8	9.9	9.5	TOTAL HORSES & PONIES

GOATS							
2.2	2.0	1.8	1.6	1.6	1.6	1.6	Female goats which have kidded
2.0	1.9	1.8	1.8	2.0	1.9	1.8	All other goats and kids
4.2	3.8	3.6	3.5	3.6	3.5	3.4	TOTAL GOATS

Table 3.4 Pigs and poultry in Northern Ireland 1986-2000

(000 head)

	1986	1987	1988	1989	1990	1991	1992	1993
PIGS								
Female breeding herd								
Sows in pig	45.8	44.7	46.2	43.5	44.3	44.6	43.5	45.0
Gilts in pig	8.9	8.3	8.7	8.1	9.1	8.8	8.9	8.9
Others sows for breeding	20.9	20.2	20.4	18.9	17.7	18.1	18.9	18.4
Total	75.7	73.1	75.4	70.4	71.0	71.5	71.2	72.3
Other breeding pigs								
Boars being used for serv	3.6	3.5	3.6	3.4	3.5	3.4	3.3	3.3
Maiden gilts	5.7	4.9	5.1	4.5	4.8	4.6	5.1	4.8
Other pigs								
Cull sows being fattened	<i>n.a.</i>	<i>n.a.</i>	<i>n.a.</i>	<i>n.a.</i>	<i>n.a.</i>	<i>n.a.</i>	<i>n.a.</i>	0.4
110kg and over	10.1	8.1	7.8	5.1	4.9	4.5	4.1	4.3
80 kg and under 110kg	57.0	63.7	66.6	74.5	72.2	67.6	72.2	70.0
50kg and under 80kg	192.9	188.1	188.9	176.5	172.0	176.8	173.6	164.7
20kg and under 50kg	196.3	195.7	194.7	185.7	195.5	188.7	182.6	198.9
Under 20kg	177.2	169.8	178.1	164.8	163.3	167.2	171.1	172.0
Total	633.5	625.4	636.1	606.5	607.9	604.8	603.6	610.3
TOTAL PIGS	718.5	706.9	720.2	684.9	687.1	684.2	683.3	690.7
POULTRY								
Commercial laying flock								
Laying birds up to end								
of first laying cycle	2,483.5	2,746.0	2,783.8	2,359.8	2,705.7	2,619.6	3,029.5	2,944.0
Second cycle	574.7	563.7	539.6	578.9	285.3	240.2	214.0	288.1
Total	3,058.2	3,309.6	3,323.4	2,938.8	2,991.0	2,859.7	3,243.5	3,232.1
Growing pullets	1,033.9	1,100.7	906.8	852.2	903.4	1,022.3	1,003.2	1,174.8
Breeding flock	660.1	686.6	752.4	865.9	1,042.5	1,100.7	1,053.1	1,376.0
Table birds								
Broilers	5,567.3	5,662.2	5,715.6	5,490.6	5,850.8	6,747.8	7,414.0	8,062.7
Turkeys	239.8	296.2	302.5	326.2	377.3	310.9	363.9	397.7
Geese	7.8	7.5	7.7	7.1	5.8	6.2	7.7	5.5
Ducks	21.8	18.7	18.3	20.3	25.1	31.7	45.3	55.4
Others	<i>n.a.</i>	<i>n.a.</i>	<i>n.a.</i>	<i>n.a.</i>	<i>n.a.</i>	<i>n.a.</i>	<i>n.a.</i>	2.3
TOTAL POULTRY	10,588.8	11,081.5	11,026.7	10,501.1	11,196.0	12,079.3	13,130.7	14,306.5

('000 head)

1994	1995	1996	1997	1998	1999	2000	
							PIGS
							Female breeding herd
43.8	42.8	42.6	46.1	43.1	32.6	27.8	Sows in pig
8.3	8.8	9.9	9.5	7.6	5.4	5.2	Gilts in pig
17.6	16.8	16.3	16.6	16.3	9.1	8.8	Others sows for breeding
69.8	68.4	68.8	72.2	66.9	47.1	41.8	Total
							Other breeding pigs
3.1	2.9	2.9	3.0	2.8	1.7	1.3	Boars being used for service
4.3	4.6	5.6	5.9	5.2	3.5	3.7	Maiden gilts
							Other pigs
0.4	0.3	0.3	0.3	0.6	0.5	0.6	Cull sows being fattened
4.9	4.4	4.3	0.7	3.0	2.1	2.0	110kg and over
70.8	75.3	83.3	75.5	71.5	58.6	52.3	80 kg and under 110kg
157.5	154.9	149.1	171.0	162.5	117.3	106.7	50kg and under 80kg
180.0	170.0	161.6	189.3	174.6	135.3	106.1	20kg and under 50kg
162.7	156.2	162.2	178.6	166.3	124.0	98.9	Under 20kg
576.3	561.1	560.8	615.5	578.5	437.9	366.7	Total
653.4	636.9	638.1	696.7	653.4	490.3	413.5	TOTAL PIGS
							POULTRY
							Commercial laying flock
3,169.8	3,005.9	2,971.2	2,490.0	2,412.4	1,960.2	2,049.9	Laying birds up to end of first laying cycle
139.9	200.4	165.2	158.9	149.7	179.9	250.0	Second cycle
3,309.7	3,206.3	3,136.4	2,648.9	2,562.1	2,140.0	2,300.0	Total
1,157.7	1,344.3	1,240.9	1,266.2	845.7	781.3	798.3	Growing pullets
1,544.6	1,748.8	1,968.5	2,138.2	2,334.5	2,266.1	2,196.3	Breeding flock
							Table birds
8,082.0	9,170.0	9,006.2	8,994.9	8,854.1	9,342.0	9,655.4	Broilers
450.0	438.4	471.8	465.5	525.3	495.3	403.9	Turkeys
4.3	4.2	2.9	5.7	2.7	2.7	2.4	Geese
51.1	89.0	70.8	85.3	43.6	15.4	11.4	Ducks
1.3	2.3	2.0	3.0	2.6	5.0	8.2	Others
14,600.7	16,003.3	15,899.5	15,607.8	15,170.6	15,047.9	15,375.9	TOTAL POULTRY

Table 3.5 Farmers and other workers in Northern Ireland 1986-2000

('000 workers)

		1986	1987	1988	1989	1990	1991	1992	1993
Farmers									
Full time	Male	25.6	25.2	25.1	24.0	23.7	23.2	23.0	22.6
	Female	3.7	3.5	3.7	3.1	2.8	2.8	3.0	2.2
	Total full-time farmers	29.3	28.8	28.8	27.1	26.5	26.0	26.0	24.8
Part time	Male	10.7	10.7	11.1	11.7	11.8	11.9	12.1	12.0
	Female	3.9	4.0	4.0	4.1	4.1	4.1	4.4	3.3
	Total part-time farmers	14.7	14.8	15.0	15.9	15.9	16.1	16.5	15.3
TOTAL FARMERS		45.4	44.8	45.2	44.0	43.3	42.9	43.4	40.4
Farmers' spouses									
Full time	Total	n.a.	n.a.	n.a.	n.a.	n.a.	n.a.	n.a.	n.a.
	Part time	Total	n.a.	n.a.	n.a.	n.a.	n.a.	n.a.	n.a.
TOTAL SPOUSES		6.1	6.0	5.7	5.5	5.4	5.2	4.4	6.5
Other workers									
Full time	Male	4.8	4.7	4.3	4.1	3.9	3.8	3.6	3.4
	Female	1.2	1.1	1.2	1.2	1.2	1.1	1.0	0.6
	Total full-time	6.0	5.8	5.5	5.4	5.1	4.9	4.6	3.9
Part time	Male	2.6	2.5	2.4	2.5	2.5	2.4	2.4	2.6
	Female	0.7	0.7	0.9	1.0	1.0	1.0	1.0	0.8
	Total part-time	3.3	3.3	3.3	3.5	3.5	3.5	3.4	3.4
Casual	Male	6.6	6.8	7.1	7.3	7.4	7.0	7.2	8.3
	Female	0.8	0.8	0.9	1.0	1.0	1.0	0.9	0.8
	Total casual/seasonal	7.5	7.6	8.0	8.3	8.4	8.0	8.1	9.0
TOTAL OTHER WORKERS		16.7	16.6	16.8	17.1	17.0	16.3	16.1	16.4
TOTAL FARMERS, SPOUSES AND OTHER WORKERS		66.8	66.1	66.3	65.6	64.8	63.6	62.9	63.0

(‘000 workers)

1994	1995	1996	1997	1998	1999	2000		
22.5	21.6	20.9	20.8	20.8	20.0	19.2	Male	Farmers
2.1	1.8	1.8	1.6	1.7	1.5	1.3	Female	Full time
24.6	23.4	22.7	22.4	22.5	21.5	20.5		Total full-time farmers
13.5	13.6	14.4	14.3	14.0	13.8	13.3	Male	Part time
3.0	2.7	2.8	2.5	2.4	2.2	2.1	Female	
16.5	16.3	17.2	16.8	16.3	16.1	15.4		Total part-time farmers
41.4	39.9	40.0	39.2	38.8	37.6	35.9		TOTAL FARMERS
n.a.	n.a.	n.a.	2.7	2.6	2.6	2.5	Total	Farmers' spouses
n.a.	n.a.	n.a.	4.3	4.4	4.5	4.6	Total	Full time
								Part time
6.2	6.8	6.8	7.0	7.0	7.0	7.0		TOTAL SPOUSES
3.3	3.2	3.0	2.7	2.6	2.7	2.7	Male	Other workers
0.4	0.4	0.4	0.3	0.3	0.3	0.3	Female	Full time
3.7	3.6	3.4	3.0	2.9	3.0	3.0		Total full-time
2.4	2.5	2.4	2.4	2.3	2.3	2.4	Male	Part time
0.8	0.7	0.7	0.7	0.6	0.5	0.7	Female	
3.2	3.2	3.1	3.1	2.9	2.8	3.1		Total part-time
8.2	8.7	8.3	8.6	8.5	8.0	7.9	Male	Casual
0.8	0.8	0.9	0.9	0.9	0.8	0.9	Female	
9.0	9.6	9.2	9.6	9.4	8.8	8.8		Total casual/seasonal
15.8	16.3	15.8	15.6	15.2	14.6	14.9		TOTAL OTHER WORKERS
63.1	63.0	62.5	61.9	61.1	59.3	57.8		TOTAL FARMERS, SPOUSES AND OTHER WORKERS

Chart 3 - 1

Total crops

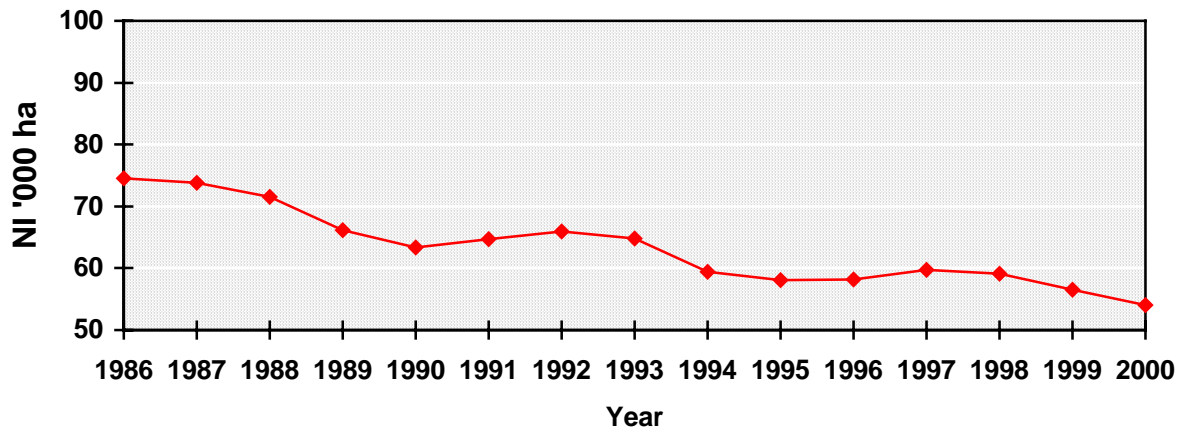


Chart 3 - 2

Total grass

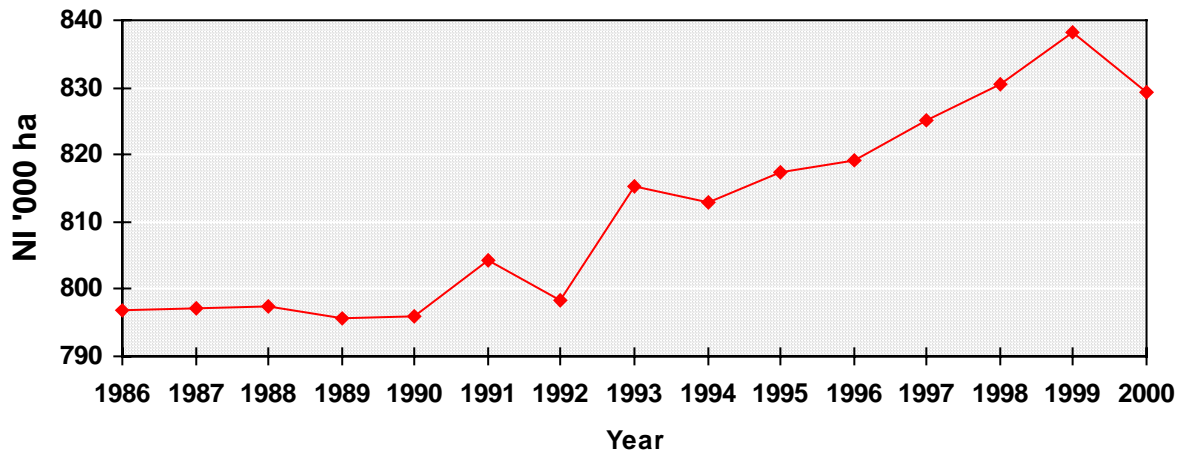


Chart 3 - 3

Cereals

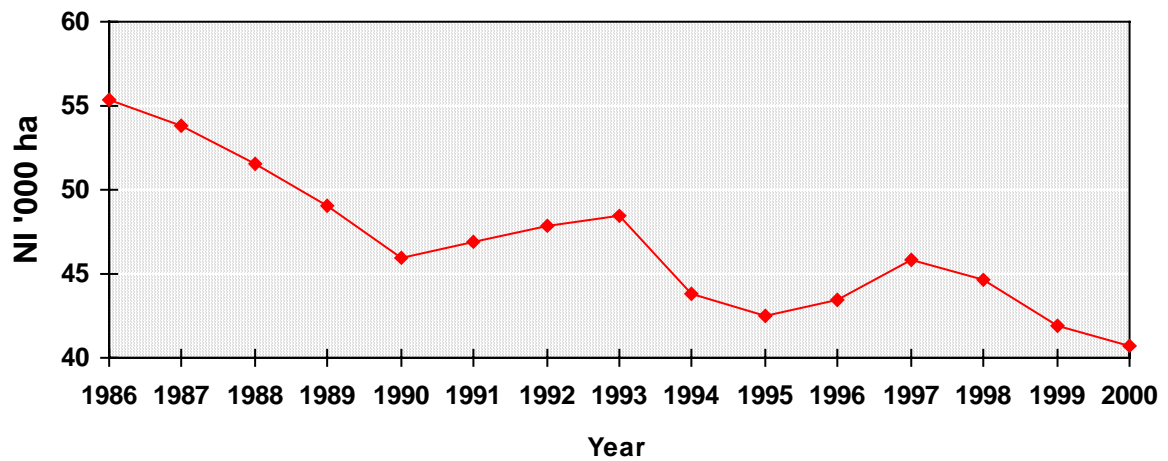


Chart 3 - 4

Total cattle

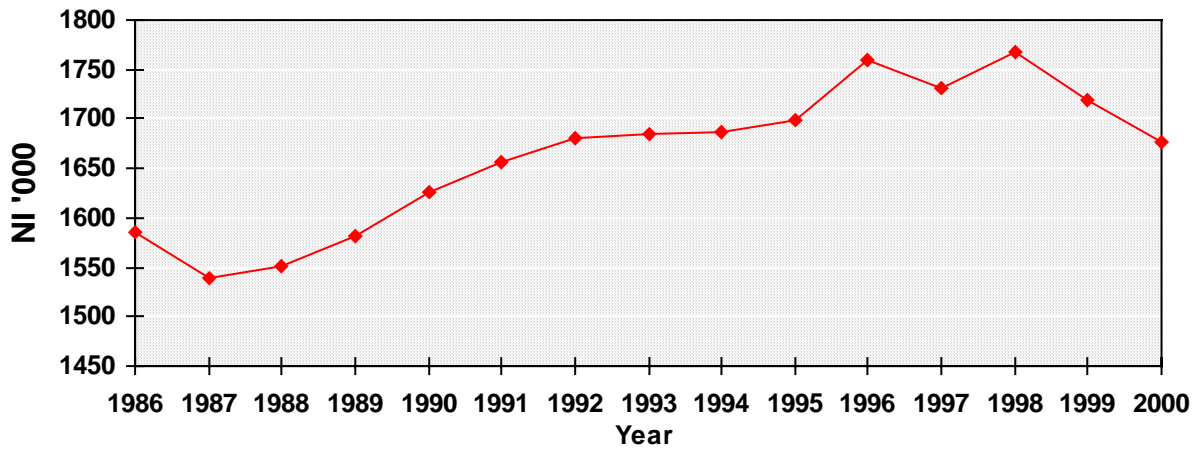


Chart 3 - 5

Dairy cows & beef cows

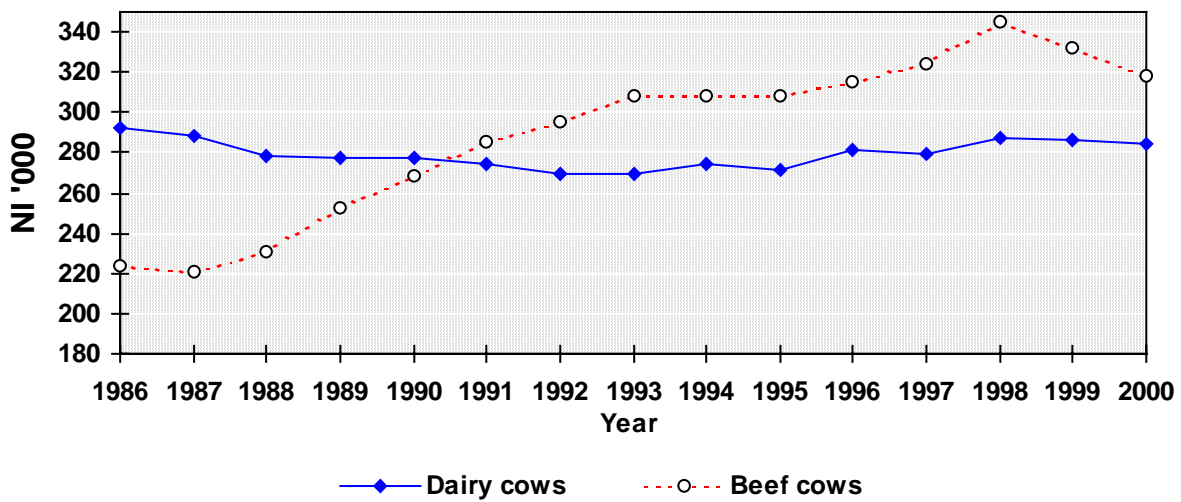


Chart 3 - 6

Dairy heifers-in-calf & beef heifers-in-calf

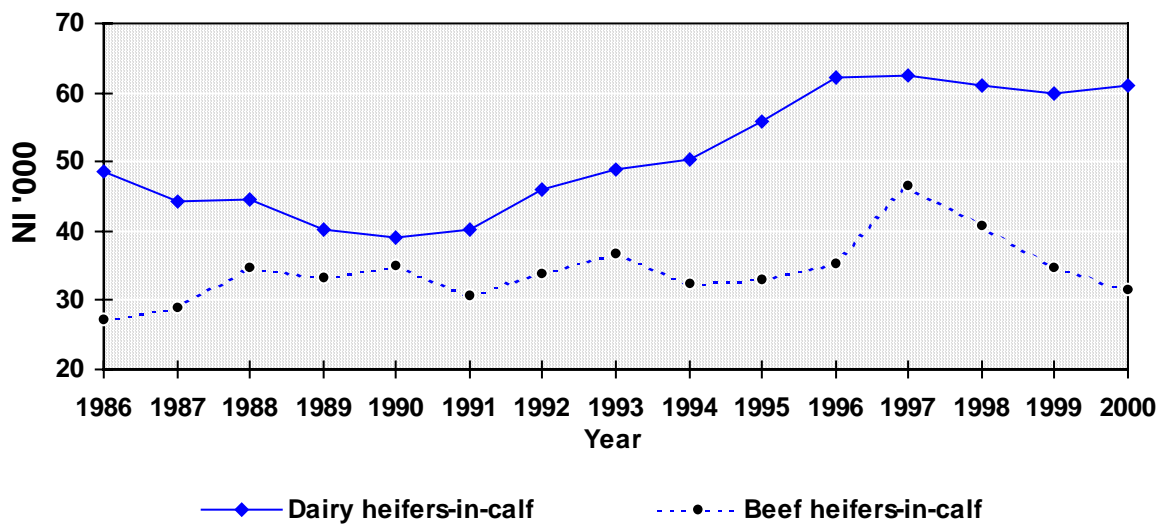


Chart 3 - 7

Total pigs & fattening pigs

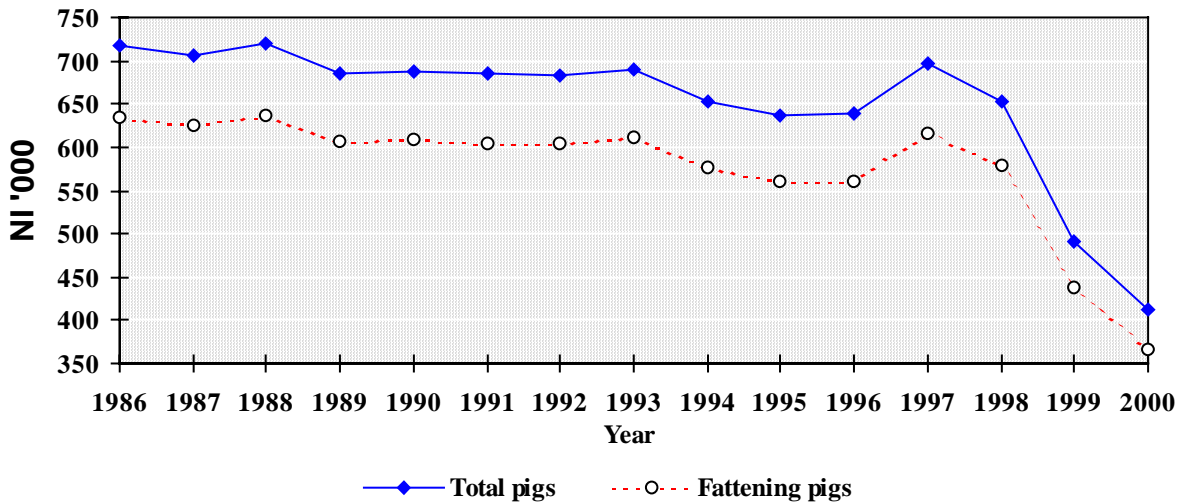


Chart 3 - 8

Sows and gilts

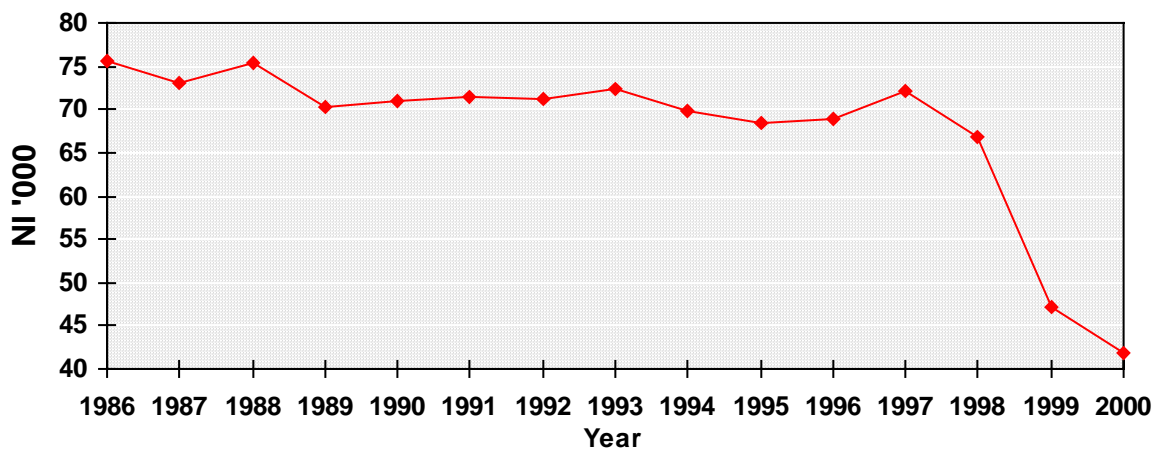


Chart 3 - 9

Total sheep & ewes

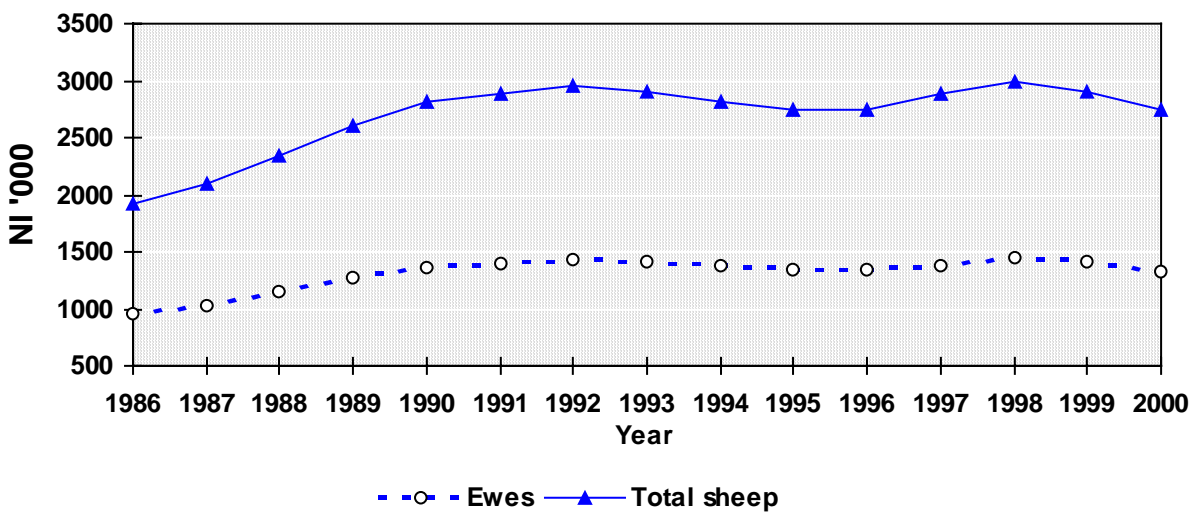


Chart 3 - 10

Total poultry

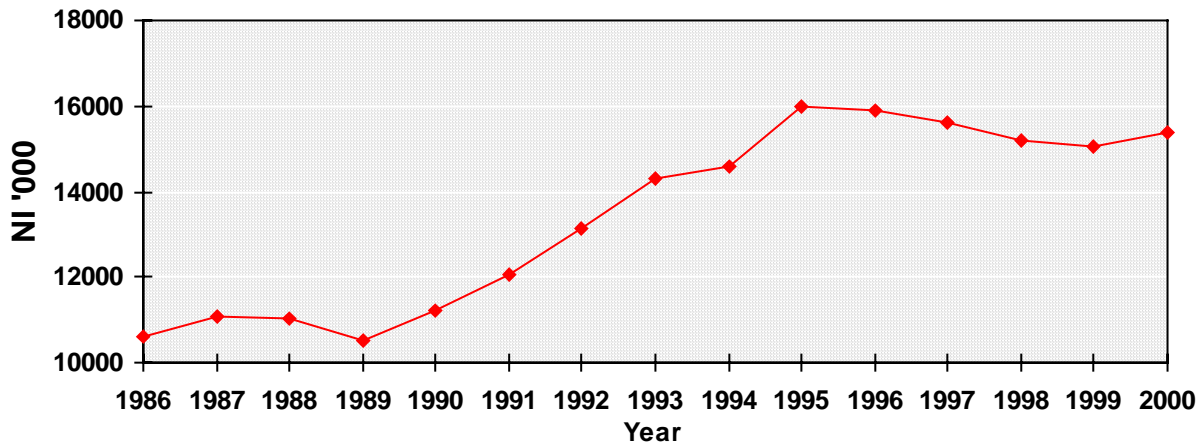


Chart 3 - 11

Laying flock & broilers

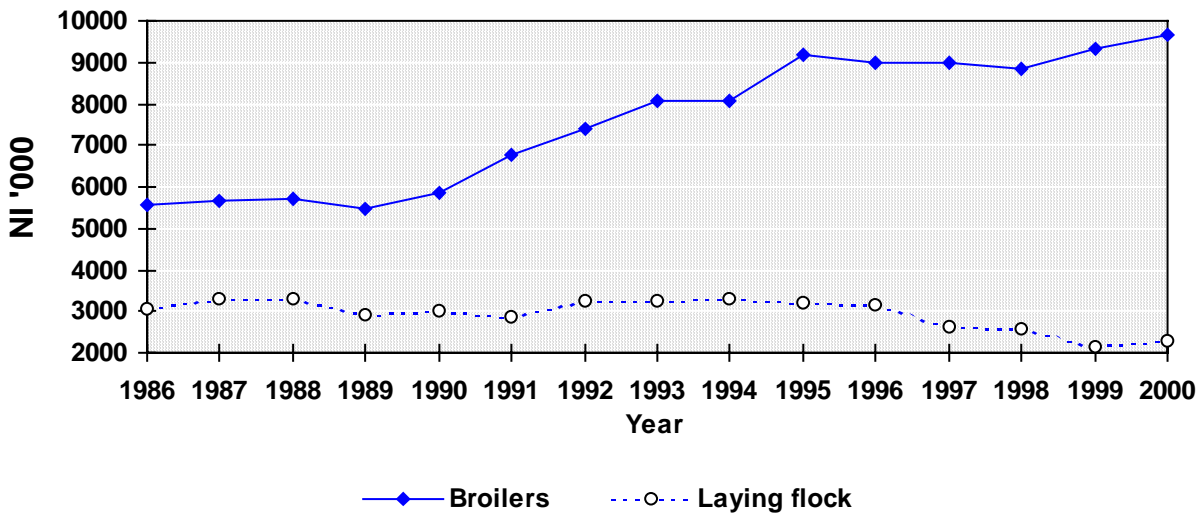


Chart 3 - 12

Total labour force

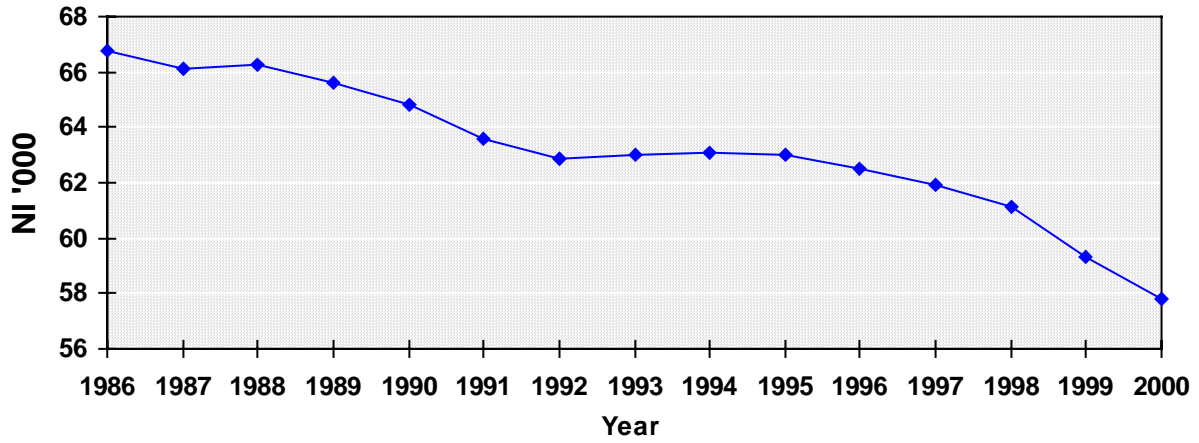


Chart 3 - 13

Farmers & partners

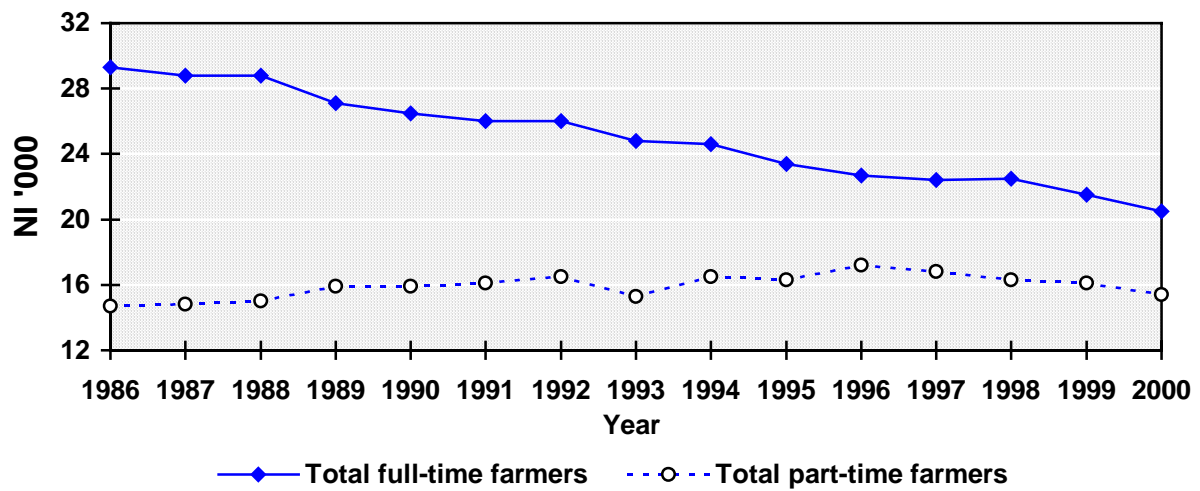
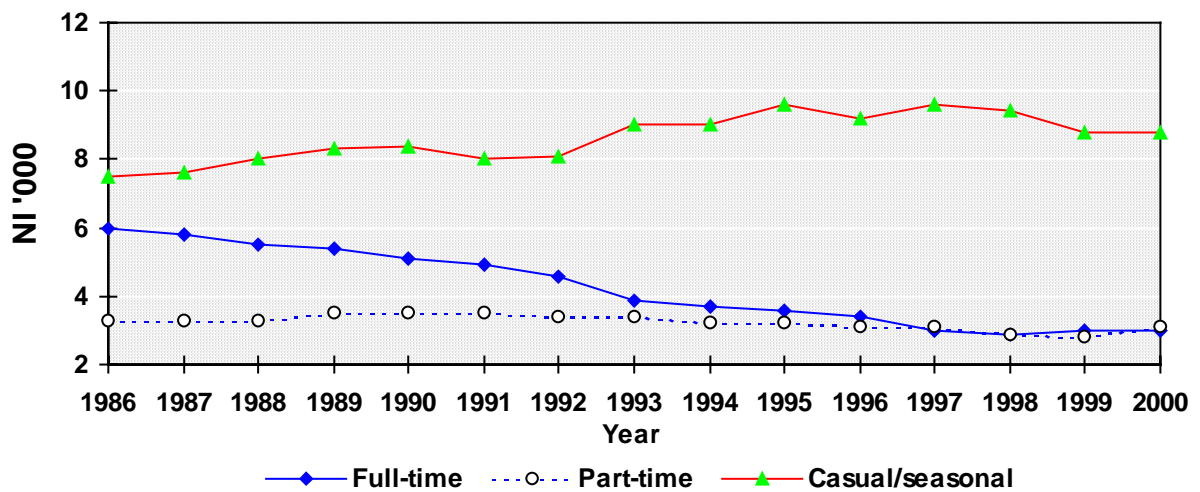


Chart 3 - 14

Other workers



SECTION 4

FARM STRUCTURE, 2000

Table 4.1	Number and area of farms by crops and grass area
Table 4.2	Number and area of farms by total area
Table 4.3	Number of farms in each county by (a) type of farms and (b) farm business size
Table 4.4	Number of farms in Northern Ireland by farm business size and (a) farm type; (b) crops and grass area; (c) total area.
Table 4.5	Number of farms by farm business size and by percentage of area farmed which is owner-occupied
Table 4.6	Number of farmers and workers by farm business size.

Table 4.1 Number and area of farms by crop & grass area farmed by county in Northern Ireland, June 2000

Crops & grass														
Crops and grass area farmed (hectares)	Antrim		Armagh		Down		Fermanagh		Londonderry		Tyrone		N.Ireland	
	Farms	Area	Farms	Area	Farms	Area	Farms	Area	Farms	Area	Farms	Area	Farms	Area
< 2	236	138	206	117	270	201	87	45	140	76	233	133	1,172	710
2 - 4.9	370	1,291	431	1,545	581	2,014	221	781	273	968	442	1,549	2,318	8,147
5 - 9.9	683	5,076	819	6,050	925	6,797	457	3,381	515	3,827	1,020	7,571	4,419	32,701
10 - 14.9	533	6,592	702	8,673	741	9,146	494	6,066	493	6,058	1,002	12,335	3,965	48,871
15 - 19.9	473	8,181	503	8,662	600	10,379	383	6,653	381	6,599	805	13,957	3,145	54,430
20 - 29.9	767	19,011	655	16,013	852	21,097	568	13,825	573	13,924	1,217	29,779	4,632	113,650
30 - 39.9	544	18,727	377	13,023	527	18,265	416	14,206	403	13,865	761	26,125	3,028	104,210
40 - 49.9	408	18,159	221	9,873	388	17,319	286	12,670	316	14,059	507	22,466	2,126	94,546
50 - 74.9	620	37,828	275	16,457	485	29,610	337	20,242	435	26,170	675	40,763	2,827	171,069
75 - 99.9	287	24,516	98	8,307	253	21,591	141	12,021	177	15,180	225	19,303	1,181	100,917
100 & over	273	41,502	61	7,697	228	33,151	135	18,932	196	28,582	185	24,434	1,078	154,297
Total	5,194	181,019	4,348	96,417	5,850	169,570	3,525	108,821	3,902	129,307	7,072	198,413	29,891	883,546

Table 4.2 Number and area of farms by total area by county in Northern Ireland, June 2000

Total area														
Total area (hectares)	Antrim		Armagh		Down		Fermanagh		Londonderry		Tyrone		N.Ireland	
	Farms	Area	Farms	Area	Farms	Area	Farms	Area	Farms	Area	Farms	Area	Farms	Area
< 2	154	131	159	117	191	185	36	34	86	76	135	114	761	656
2 - 4.9	299	1,033	399	1,430	539	1,874	143	524	226	801	344	1,215	1,950	6,877
5 - 9.9	566	4,178	795	5,923	917	6,745	375	2,831	451	3,358	842	6,291	3,946	29,327
10 - 14.9	471	5,862	678	8,400	706	8,747	472	5,888	419	5,177	884	10,943	3,630	45,016
15 - 19.9	458	7,938	524	9,050	611	10,570	401	6,995	358	6,155	732	12,735	3,084	53,444
20 - 29.9	713	17,696	688	16,849	870	21,627	583	14,271	547	13,506	1,207	29,796	4,608	113,744
30 - 39.9	584	20,176	389	13,505	560	19,403	453	15,584	392	13,538	827	28,545	3,205	110,751
40 - 49.9	424	18,850	237	10,538	388	17,344	327	14,562	323	14,400	569	25,284	2,268	100,978
50 - 74.9	711	43,421	302	18,133	524	32,003	383	23,215	499	30,279	853	51,866	3,272	198,918
75 - 99.9	361	30,837	105	8,914	271	23,074	162	13,888	241	20,785	312	26,694	1,452	124,192
100 & over	453	76,611	72	9,211	273	42,462	190	28,699	360	61,876	367	57,741	1,715	276,600
Total	5,194	226,733	4,348	102,071	5,850	184,034	3,525	126,491	3,902	169,950	7,072	251,225	29,891	1,060,504

Table 4.3 Number of farms by (a) type of farm and (b) farm business size by county in Northern Ireland, June 2000

	County						
	Antrim	Armagh	Down	Fermanagh	Londonderry	Tyrone	N.Ireland
FARM TYPE:							
Cereals	87	47	224	0	102	50	510
General cropping	60	19	135	2	74	32	322
Horticulture	49	184	70	5	11	27	346
Pigs & poultry	140	94	111	15	57	123	540
Dairy	1,045	605	858	567	538	1,242	4,855
Cattle & sheep: LFA	2,569	2,352	1,939	2,806	2,072	4,445	16,183
Cattle & sheep: lowland	785	676	1,737	15	735	761	4,709
Mixed	226	144	395	14	211	158	1,148
Other type	233	227	381	101	102	234	1,278
All types	5,194	4,348	5,850	3,525	3,902	7,072	29,891
FARM BUSINESS SIZE:							
Very small	2,216	2,649	3,095	2,035	1,803	3,737	15,535
Small	2,034	1,297	1,861	1,264	1,566	2,525	10,547
Medium	789	341	670	212	436	705	3,153
Large	155	61	224	14	97	105	656
Total	5,194	4,348	5,850	3,525	3,902	7,072	29,891

Table 4.4 Number of farms by (a) type of farm; (b) crops and grass area and (c) total area by farm business size in Northern Ireland, June 2000

	Farm business size				Total
	Very small	Small	Medium	Large	
FARM TYPE:					
Cereals	309	165	30	6	510
General cropping	85	153	60	24	322
Horticulture	125	151	47	23	346
Pigs & poultry	220	232	63	25	540
Dairy	97	2,133	2,134	491	4,855
Cattle & sheep: LFA	10,124	5,561	463	35	16,183
Cattle & sheep: lowland	3,159	1,437	107	6	4,709
Mixed	380	575	161	32	1,148
Other type	1,036	140	88	14	1,278
All types	15,535	10,547	3,153	656	29,891
AREA OF CROPS & GRASS FARMED (hectares)					
Under 10	7,189	599	93	28	7,909
10 - 19.9	5,526	1,515	61	8	7,110
20.0 - 29.9	1,889	2,594	143	6	4,632
30.0 - 49.9	765	3,482	888	19	5,154
50.0 - 99.9	155	2,090	1,518	245	4,008
100 & over	11	267	450	350	1,078
Total	15,535	10,547	3,153	656	29,891
TOTAL AREA FARMED (hectares)					
Under 10	6,172	376	84	25	6,657
10 - 19.9	5,613	1,048	47	6	6,714
20.0 - 29.9	2,298	2,183	123	4	4,608
30.0 - 49.9	1,145	3,549	762	17	5,473
50.0 - 99.9	275	2,754	1,478	217	4,724
100 & over	32	637	659	387	1,715
Total	15,535	10,547	3,153	656	29,891

Table 4.5 Number of farms by farm business size and by percentage of area farmed which is owner-occupied, June 2000

Owner-occupied land as percentage of area farmed	Farm business size				Total
	Very small	Small	Medium	Large	
All	10,060	3,689	658	108	14,515
50-<100%	2,584	4,260	1,785	380	9,009
>0-<50%	1,532	2,110	679	163	4,484
None	1,359	488	31	5	1,883
All farms	15,535	10,547	3,153	656	29,891
Average percentage owner-occupied	78	69	67	64	70

Table 4.6 Number of workers by farm business size in Northern Ireland, June 2000

	Farm business size				Total
	Very small	Small	Medium	Large	
<i>Farmers, partners & directors:</i>					
Full-time	5,503	9,713	4,246	1,072	20,534
Part-time	11,328	3,256	665	137	15,386
Total	16,831	12,969	4,911	1,209	35,920
Spouses	2,580	2,914	1,230	310	7,034
<i>Other workers</i>					
Full-time	269	931	825	980	3,005
Part-time	767	1,343	698	254	3,062
Casual/seasonal	2,112	4,060	2,087	543	8,802
Total other workers	3,148	6,334	3,610	1,777	14,869
Total agricultural labour force	22,559	22,217	9,751	3,296	57,823

SECTION 5

FARM ENTERPRISES, 2000

Tables showing the numbers of farms in each county having each crop or type of livestock and the distribution by enterprise size.

Table 5.1	Cereals
Table 5.2	Barley
Table 5.3	Winter barley
	Spring barley
	Oats
	Wheat
Table 5.4	Potatoes
Table 5.5	Dairy cows
Table 5.6	Beef cows
Table 5.7	Cattle one year old and over, intended for slaughter
Table 5.8	Total cattle
Table 5.9	Breeding ewes
Table 5.10	Total sheep
Table 5.11	Sows
Table 5.12	Fattening pigs, 20kg and over
Table 5.13	Total pigs
Table 5.14	Broilers
	Growing pullets
	Breeding fowl
	Laying hens
	Total ordinary fowl
	Total poultry

Table 5.1 Distribution of farms and cereals by area of cereals by county, June 2000

<i>Area of cereals on farms (hectares)</i>	All Cereals											
	Antrim		Armagh		Down		Londonderry		Fermanagh & Tyrone¹		N.Ireland	
	Farms	Area	Farms	Area	Farms	Area	Farms	Area	Farms	Area	Farms	Area
under 1	22	15	7	5	65	42	21	15	10	6	125	82
1 - 1.9	101	146	33	49	164	226	96	137	35	48	429	605
2 - 4.9	298	991	93	300	419	1,363	276	888	150	464	1236	4,006
5 - 9.9	218	1,506	74	524	337	2,386	241	1,685	111	772	981	6,874
10 - 19.9	169	2,355	50	702	303	4,306	192	2,722	80	1,075	794	11,160
20 - 29.9	39	941	15	364	83	1,998	41	990	12	276	190	4,568
30 - 39.9	13	437	9	687	37	1,257	24	808	14	736	81	2,751
40 - 49.9	6	277			17	747	15	663			42	1,864
50 and over	9	758			56	4,695	30	2,367			107	8,817
Total	875	7,425	281	2,631	1,481	17,018	936	10,274	412	3,377	3,985	40,726

¹ Figures for Fermanagh and Tyrone have been amalgamated due to data confidentiality constraints.

Table 5.2 Distribution of farms and crops by area of barley by county, June 2000

<i>Area of barley on farms (hectares)</i>	Barley (spring and winter)											
	Antrim		Armagh		Down		Londonderry		Fermanagh & Tyrone¹		N.Ireland	
	Farms	Area	Farms	Area	Farms	Area	Farms	Area	Farms	Area	Farms	Area
under 1	17	11	7	5	54	36	16	12	8	6	102	70
1 - 1.9	99	143	30	45	149	204	86	123	27	38	391	553
2 - 4.9	287	958	83	263	399	1,298	260	838	131	406	1,160	3,764
5 - 9.9	207	1,450	69	481	342	2,444	231	1,601	107	753	956	6,730
10 - 19.9	133	1,840	43	588	253	3,573	178	2,509	65	875	672	9,385
20 - 29.9	32	737	12	381	74	1,791	44	1,044	23	821	167	3,957
30 - 39.9	14	467			29	986	19	653			71	2,405
40 & over	7	420			47	3,021	31	1,819			94	5,778
Total	796	6,027	244	1,764	1,347	13,353	865	8,599	361	2,899	3,613	32,641

¹ Figures for Fermanagh and Tyrone have been amalgamated due to data confidentiality constraints.

Table 5.3 Distribution of farms and crops by area of crop, Northern Ireland, June 2000

<i>Area of crop on farms (hectares)</i>	<u>Winter Barley</u>		<u>Spring Barley</u>		<u>Oats</u>		<u>Wheat</u>	
	Farms	Area	Farms	Area	Farms	Area	Farms	Area
under 1	25	17	119	79	59	35	26	19
1 - 1.9	71	105	399	564	129	176	68	100
2 - 4.9	233	768	1,153	3,731	210	643	179	583
5 - 9.9	159	1,103	914	6,408	110	750	144	985
10 - 19.9	107	1,419	603	8,405	39	541	71	922
20 - 29.9	26	610	124	2,914	8	187	22	541
30 - 39.9	11	379	59	2,003	5	171	9	303
40 - 49.9	13	801	24	1,060	7	441	9	413
50 and over			34	2,276			16	1,124
Total	645	5,201	3,429	27,440	567	2,943	544	4,990

Table 5.4 Distribution of farms and potatoes by area of potatoes by county, June 2000

<i>Area of potatoes on farms (hectares)</i>	<u>Potatoes</u>											
	<u>Antrim</u>		<u>Armagh</u>		<u>Down</u>		<u>Londonderry</u>		<u>Fermanagh & Tyrone¹</u>		<u>N.Ireland</u>	
	Farms	Area	Farms	Area	Farms	Area	Farms	Area	Farms	Area	Farms	Area
under 0.5	19	4	24	5	68	16	31	7	42	10	184	43
0.5 - 0.9	29	22	8	6	63	44	19	14	28	17	147	101
1 - 1.9	56	77	18	23	60	76	47	63	16	21	197	259
2 - 2.9	47	110	11	26	47	107	24	53	14	33	143	329
3 - 4.9	35	135	10	39	48	186	40	153	16	59	149	572
5 - 9.9	44	301	8	126	61	431	35	243	25	284	157	1,087
10 - 14.9	21	251			27	312	19	246			74	895
15 & over	26	958			45	1,346	26	969			106	3,487
Total	277	1,858	79	225	419	2,517	241	1,747	141	424	1,157	6,772

¹ Figures for Fermanagh and Tyrone have been amalgamated due to data confidentiality constraints.

Table 5.5 Distribution of farms and dairy cows by number of dairy cows and county, June 200

<i>Number of dairy cows on farms</i>	Dairy cows													
	Antrim		Armagh		Down		Fermanagh		Londonderry		Tyrone		N.Ireland	
	Farms	Cows	Farms	Cows	Farms	Cows	Farms	Cows	Farms	Cows	Farms	Cows	Farms	Cows
1 - 2	12	30	7	9	9	20	8	11	9	21	12	20	43	65
3 - 4			7	26			8	26			5	17	34	115
5 - 9	17	126	18	121	9	60	52	381	12	87	39	287	147	1,062
10 - 14	44	538	49	578	14	170	58	695	21	262	101	1,213	287	3,456
15 - 19	49	843	47	807	29	490	63	1,056	44	748	84	1,433	316	5,377
20 - 29	137	3,318	117	2,796	73	1,788	124	2,967	78	1,906	192	4,611	721	17,386
30 - 39	171	5,886	92	3,136	86	2,970	101	3,454	72	2,478	201	6,840	723	24,764
40 - 49	154	6,772	78	3,451	123	5,446	82	3,575	78	3,391	180	7,898	695	30,533
50 - 59	109	5,862	58	3,149	89	4,791	48	2,562	78	4,204	124	6,618	506	27,186
60 - 69	116	7,388	53	3,374	81	5,178	19	1,238	40	2,543	101	6,426	410	26,147
70 - 99	198	16,296	65	5,444	185	15,250	40	3,190	98	7,843	191	15,579	777	63,602
100 & over	146	18,963	57	7,613	212	31,032	20	2,380	75	10,322	106	14,382	616	84,692
Total	1,153	66,022	648	30,504	910	67,195	623	21,535	605	33,805	1,336	65,324	5,275	284,385

Table 5.6 Distribution of farms and beef cows by number of beef cows and county, June 200

<i>Number of beef cows on farms</i>	Beef cows													
	Antrim		Armagh		Down		Fermanagh		Londonderry		Tyrone		N.Ireland	
	Farms	Cows	Farms	Cows	Farms	Cows	Farms	Cows	Farms	Cows	Farms	Cows	Farms	Cows
1 - 2	207	319	253	388	320	493	163	256	172	264	402	622	1,517	2,342
3 - 4	159	551	255	884	276	961	193	675	176	618	356	1,258	1,415	4,947
5 - 9	414	2,841	595	4,115	584	3,951	554	3,774	423	2,904	900	6,266	3,470	23,851
10 - 14	358	4,189	439	5,094	411	4,850	494	5,802	323	3,852	734	8,618	2,759	32,405
15 - 19	262	4,374	252	4,198	287	4,782	309	5,163	228	3,853	504	8,434	1,842	30,804
20 - 29	404	9,720	305	7,172	369	8,716	425	10,092	332	7,824	636	15,014	2,471	58,538
30 - 39	242	8,172	150	5,017	169	5,671	223	7,544	180	6,046	334	11,267	1,298	43,717
40 - 49	166	7,290	70	3,028	98	4,266	127	5,566	84	3,653	160	7,063	705	30,866
50 - 59	87	4,634	41	2,222	56	2,975	67	3,572	61	3,249	101	5,395	413	22,047
60 - 69	47	2,981	22	1,416	27	1,734	47	2,969	39	2,464	57	3,612	239	15,176
70 - 99	84	6,776	17	1,425	37	3,059	63	5,069	49	3,905	58	4,627	308	24,861
100 & over	68	10,406	8	927	21	2,848	42	5,424	29	3,933	37	4,867	205	28,405
Total	2,498	62,253	2,407	35,886	2,655	44,306	2,707	55,906	2,096	42,565	4,279	77,043	16,642	317,959

Table 5.7 Distribution of farms and cattle by number of cattle and county, June 2000

<i>Number of cattle on farms</i>	Male and female cattle one year old & over, intended for slaughter													
	Antrim		Armagh		Down		Fermanagh		Londonderry		Tyrone		N.Ireland	
	Farms	Cows	Farms	Cows	Farms	Cows	Farms	Cows	Farms	Cows	Farms	Cows	Farms	Cows
1 - 2	310	456	257	391	266	401	387	556	244	362	498	741	1,962	2,907
3 - 4	227	784	263	925	245	869	201	696	191	664	438	1,528	1,565	5,466
5 - 9	492	3,375	589	4,007	599	4,150	320	2,186	413	2,884	821	5,625	3,234	22,227
10 - 14	401	4,743	429	5,118	510	6,024	218	2,573	281	3,336	626	7,380	2,465	29,174
15 - 19	297	5,027	296	4,977	337	5,635	139	2,331	228	3,859	445	7,506	1,742	29,335
20 - 29	421	10,160	417	10,091	543	13,016	161	3,764	332	7,912	563	13,500	2,437	58,443
30 - 39	250	8,437	239	8,041	345	11,735	73	2,456	212	7,270	310	10,491	1,429	48,430
40 - 49	170	7,479	154	6,761	200	8,789	47	2,050	123	5,404	197	8,572	891	39,055
50 - 59	122	6,534	99	5,355	132	7,160	39	2,118	98	5,331	151	8,087	641	34,585
60 - 69	78	4,911	57	3,610	94	5,997	25	1,570	68	4,345	105	6,704	427	27,137
70 - 99	113	9,358	104	8,482	162	13,286	31	2,514	86	6,968	141	11,403	637	52,011
100 & over	98	14,169	73	10,715	105	14,071	18	2,520	89	13,547	105	15,995	488	71,017
Total	2,979	75,433	2,977	68,473	3,538	91,133	1,659	25,334	2,365	61,882	4,400	97,532	17,918	419,787

Table 5.8 Distribution of farms and total cattle by number of cattle and county, June 2000

<i>Number of cattle on farms</i>	Total cattle													
	Antrim		Armagh		Down		Fermanagh		Londonderry		Tyrone		N.Ireland	
	Farms	Cows	Farms	Cows	Farms	Cows	Farms	Cows	Farms	Cows	Farms	Cows	Farms	Cows
1 - 4	136	389	149	454	191	577	138	406	130	362	225	658	969	2,846
5 - 9	219	1,544	325	2,292	331	2,290	268	1,907	195	1,358	420	2,933	1,758	12,324
10 - 19	461	6,562	634	9,071	678	9,571	546	7,903	444	6,398	905	12,939	3,668	52,444
20 - 29	421	10,191	532	12,932	547	13,325	455	11,034	373	9,077	853	20,702	3,181	77,261
30 - 39	364	12,391	375	12,761	409	14,049	355	12,103	303	10,437	622	21,362	2,428	83,103
40 - 49	288	12,860	360	15,899	344	15,230	265	11,728	238	10,535	546	24,201	2,041	90,453
50 - 69	514	30,389	403	23,468	491	29,024	449	26,543	371	21,908	780	45,565	3,008	176,897
70 - 99	581	48,171	383	31,567	501	41,843	366	30,652	355	29,767	711	58,939	2,897	240,939
100 - 149	559	67,973	312	37,340	456	55,502	261	31,507	348	42,542	630	76,975	2,566	311,839
150 - 199	306	52,470	145	24,729	217	37,260	102	17,443	181	31,249	274	46,807	1,225	209,958
200 - 249	174	38,677	67	14,897	153	34,161	65	14,514	95	20,968	148	32,683	702	155,900
250 - 299	85	22,985	29	8,037	81	22,212	21	5,837	37	10,066	56	15,213	309	84,350
300 & over	106	43,589	35	13,511	119	49,418	19	7,607	82	32,551	81	31,489	442	178,165
Total	4,214	348,191	3,749	206,958	4,518	324,462	3,310	179,184	3,152	227,218	6,251	390,466	25,194	1,676,479

Table 5.9 Distribution of farms and breeding ewes by number of ewes and county, June 2000

<i>Number of ewes on farms</i>	Breeding ewes													
	Antrim		Armagh		Down		Fermanagh		Londonderry		Tyrone		N.Ireland	
	Farms	Ewes	Farms	Ewes	Farms	Ewes	Farms	Ewes	Farms	Ewes	Farms	Ewes	Farms	Ewes
1 - 24	262	3,750	228	3,392	297	4,414	173	2,393	195	2,933	414	6,035	1,569	22,917
25 - 49	385	14,116	260	9,302	477	17,365	120	4,215	296	10,817	467	16,658	2,005	72,473
50 - 99	580	40,979	285	20,272	691	48,252	131	8,555	468	32,690	637	44,689	2,792	195,437
100 - 199	601	82,537	163	21,504	603	82,922	109	14,481	518	71,978	503	70,173	2,497	343,595
200 - 299	237	56,387	54	13,124	189	45,297	38	8,948	201	47,630	190	45,455	909	216,841
300 - 399	112	38,112	27	8,855	72	24,408	14	4,826	116	39,355	103	34,628	444	150,184
400 - 499	56	24,817	10	4,301	32	13,943	6	2,594	49	21,113	39	16,976	192	83,744
500 - 999	85	55,216	6	3,485	33	20,227	8	5,199	65	42,467	60	38,429	257	165,023
1,000 & over	24	34,100	0	0	6	8,451	5	6,655	14	17,467	13	15,728	62	82,401
Total	2,342	350,014	1,033	84,235	2,400	265,279	604	57,866	1,922	286,450	2,426	288,771	10,727	1,332,615

Table 5.10 Distribution of farms and total sheep by number of sheep and county, June 2000

<i>Number of sheep on farms</i>	Total sheep													
	Antrim		Armagh		Down		Fermanagh		Londonderry		Tyrone		N.Ireland	
	Farms	Sheep	Farms	Sheep	Farms	Sheep	Farms	Sheep	Farms	Sheep	Farms	Sheep	Farms	Sheep
1 - 24	117	1,551	107	1,555	138	1,879	92	1,278	85	1,149	189	2,672	728	10,084
25 - 49	186	6,886	181	6,611	233	8,737	100	3,552	170	6,306	282	10,204	1,152	42,296
50 - 99	384	28,521	242	17,430	471	34,983	130	9,437	270	20,144	450	32,748	1,947	143,263
100 - 199	570	82,597	260	36,920	634	90,156	114	15,795	446	64,745	602	86,471	2,626	376,684
200 - 299	356	88,742	121	29,144	393	96,407	77	18,790	320	78,856	308	75,153	1,575	387,092
300 - 399	206	70,567	47	16,451	207	71,201	33	11,131	212	73,285	193	66,110	898	308,745
400 - 499	145	64,716	26	11,626	132	58,974	18	7,946	103	45,404	130	57,689	554	246,355
500 - 699	174	102,037	34	20,109	108	63,303	24	13,980	153	90,866	135	78,334	628	368,629
700 - 999	109	90,099	17	13,380	64	52,093	15	12,395	112	93,045	89	73,299	406	334,311
1,000 & over	121	195,390	11	12,978	43	61,319	12	24,549	73	115,945	74	112,946	334	523,127
Total	2,368	731,106	1,046	166,204	2,423	539,052	615	118,853	1,944	589,745	2,452	595,626	10,848	2,740,586

Table 5.11 Distribution of farms and sows by number of sows and county, June 2000

<i>Number of sows on farms</i>	Sows											
	Antrim		Armagh		Down		Londonderry		Fermanagh & Tyrone¹		N.Ireland	
	Farms	Sows	Farms	Sows	Farms	Sows	Farms	Sows	Farms	Sows	Farms	Sows
1 - 2	31	42	28	41	38	62	15	23	28	38	140	206
3 - 4	13	45	13	45	18	66	10	36	17	58	71	250
5 - 9	20	128	15	99	28	188	11	73	15	95	89	583
10 - 14	9	106	12	142	16	191	8	90	11	122	56	651
15 - 19	7	114	7	135	6	108	7	117	20	417	34	577
20 - 29	6	139			8	196	6	144			33	793
30 - 49	8	294	11	416	9	342	8	309	14	528	50	1,889
50 - 99	15	1,023	18	1,209	22	1,644	15	1,030	25	1,768	95	6,674
100 - 149	7	835	7	822	8	1,039	5	588	17	2,034	44	5,318
150 & over	10	4,049	11	3,213	13	3,916	18	4,818	25	8,865	77	24,861
Total	126	6,775	122	6,122	166	7,752	103	7,228	172	13,925	689	41,802

¹ Figures for Fermanagh and Tyrone have been amalgamated due to data confidentiality constraints.

Table 5.12 Distribution of farms and fattening pigs (20 Kg +) by number of pigs and county, June 2000

<i>Number of pigs on farms</i>	Fattening pigs (20Kg +)											
	Antrim		Armagh		Down		Londonderry		Fermanagh & Tyrone¹		N.Ireland	
	Farms	Pigs	Farms	Pigs	Farms	Pigs	Farms	Pigs	Farms	Pigs	Farms	Pigs
1 - 9	14	46	12	62	14	65	5	21	11	32	56	226
10 - 19	10	130	5	62	10	123	9	117	14	193	48	625
20 - 49	10	301	10	292	16	514	5	185	20	618	61	1,910
50 - 99	12	835	9	635	14	1,016	7	427	11	762	53	3,675
100 - 199	14	1,819	10	1,502	17	2,459	7	997	22	3,068	70	9,845
200 - 399	11	2,953	12	3,603	15	3,997	13	3,759	17	5,065	68	19,377
400 - 999	18	11,161	18	11,394	24	15,684	18	12,541	36	22,159	114	72,939
1,000 - 1,999	8	27,071	11	22,911	9	22,265	13	23,153	11	17,175	37	52,975
2,000 & over									13	46,569	28	106,169
Total	97	44,316	87	40,461	119	46,123	77	41,200	155	95,641	535	267,741

¹ Figures for Fermanagh and Tyrone have been amalgamated due to data confidentiality constraints.

Table 5.13 Distribution of farms and total pigs by number of pigs and county, June 2000

<i>Number of pigs on farms</i>	Pigs											
	Antrim		Armagh		Down		Londonderry		Fermanagh & Tyrone¹		N.Ireland	
	Farms	Pigs	Farms	Pigs	Farms	Pigs	Farms	Pigs	Farms	Pigs	Farms	Pigs
1 - 9	39	118	34	104	55	168	25	96	37	100	190	586
10 - 19	16	233	11	153	13	173	6	76	17	247	63	882
20 - 49	24	777	15	471	22	657	15	471	27	913	103	3,289
50 - 99	11	716	13	898	23	1,567	13	927	17	1,277	77	5,385
100 - 199	15	2,247	14	1,980	17	2,287	10	1,662	20	2,855	76	11,031
200 - 399	15	3,937	10	3,100	14	4,158	11	3,014	21	5,995	71	20,204
400 - 999	18	11,635	21	13,862	21	12,337	16	10,366	32	22,072	108	70,272
1,000 - 1,999	10	12,293	12	14,844	17	21,550	13	18,653	19	25,768	71	93,108
2,000 & over	6	33,340	6	24,015	7	30,231	10	31,066	20	90,071	49	208,723
Total	154	65,296	136	59,427	189	73,128	119	66,331	210	149,298	808	413,480

¹ Figures for Fermanagh and Tyrone have been amalgamated due to data confidentiality constraints.

Table 5.14 Distribution of farms and fowl by size of flock in Northern Ireland, June 2000

<i>Size of flock on farms</i>	Poultry											
	Broilers		Growing pullets		Breeding fowl		Laying hens		Ordinary fowl		Total poultry	
	Farms	Broilers ('000)	Farms	Pullets ('000)	Farms	Fowl ('000)	Farms	Hens ('000)	Farms	Birds ('000)	Farms	Birds ('000)
under 1,000	36	1	123	3	214	4	1,124	21	1,262	27	1,490	45
1,000 - 4,999	7	16			24	97	33	98	66	221	108	335
5,000 - 9,999	16	109	11	64	85	569	41	270	149	998	169	1,143
10,000 - 19,999	58	865	15	219	38	502	29	398	136	1,929	146	2,077
20,000 - 29,999	52	1,134	12	513	6	1,025	8	178	63	1,389	63	1,389
30,000 - 49,999	66	2,542					12	432	81	3,066	81	3,066
50,000 and over	55	4,988					6	904	68	7,321	68	7,321
Total	290	9,655	161	798	367	2,196	1,253	2,300	1,825	14,950	2,125	15,376

SECTION 6

DISTRICT COUNCIL AREA STATISTICS, 2000

Tables showing the numbers of farms, crop areas, livestock numbers and persons working on farms in each District Council Area in 2000.

Table 6.1	Number of farms by crops and grass area
Table 6.2	Number of farms by farm business size
Table 6.3	Number of farms by farm type
Table 6.4	Number of farms by Less Favoured Area designation
Table 6.5	Crop areas
Table 6.6	Livestock numbers
Table 6.7	Farm labour force

Map of District Council areas

Table 6.1 Number of farms by crops & grass area by District Council in Northern Ireland.

<i>District Council</i>	Average crops & grass ha/farm	Crops & grass area									
		Number of farms					Percentage distribution				
		0-9.9	10-19.9	20-29.9	30+	Total	0-9.9	10-19.9	20-29.9	30+	Total
Antrim	38.3	196	134	106	365	801	24	17	13	46	100
Ards	36.2	216	151	103	323	793	27	19	13	41	100
Armagh	24.1	733	582	332	603	2,250	33	26	15	27	100
Ballymena	30.1	354	294	227	496	1,371	26	21	17	36	100
Ballymoney	34.5	178	162	116	343	799	22	20	15	43	100
Banbridge	28.4	349	309	173	418	1,249	28	25	14	33	100
Belfast	41.3	9	6	4	14	33	27	18	12	42	100
Carrickfergus	27.8	42	18	12	45	117	36	15	10	38	100
Castlereagh	39.5	40	23	19	52	134	30	17	14	39	100
Coleraine	39.3	158	141	104	399	802	20	18	13	50	100
Cookstown	24.7	425	410	236	441	1,512	28	27	16	29	100
Craigavon	28.1	249	148	98	234	729	34	20	13	32	100
Derry	37.9	117	126	89	267	599	20	21	15	45	100
Down	32.2	361	275	236	476	1,348	27	20	18	35	100
Dungannon	25.9	564	528	357	630	2,079	27	25	17	30	100
Fermanagh	30.8	775	902	588	1,328	3,593	22	25	16	37	100
Larne	39.2	127	110	95	239	571	22	19	17	42	100
Limavady	40.0	148	150	79	340	717	21	21	11	47	100
Lisburn	32.4	273	215	137	367	992	28	22	14	37	100
Magherafelt	26.2	423	374	247	430	1,474	29	25	17	29	100
Moyle	38.6	166	102	88	294	650	26	16	14	45	100
Newry & Mourn	19.0	1,105	915	454	569	3,043	36	30	15	19	100
Newtownabbey	34.6	67	64	43	116	290	23	22	15	40	100
North Down	36.4	25	14	14	38	91	27	15	15	42	100
Omagh	28.6	518	646	430	849	2,443	21	26	18	35	100
Strabane	33.9	291	311	245	564	1,411	21	22	17	40	100
Total	29.6	7,909	7,110	4,632	10,240	29,891	26	24	15	34	100

Table 6.2 Number of farms by business size by District Council in Northern Ireland, June 2000

<i>District Council</i>	Average SGM/farm ('000 ECU's)	Business size									
		Number of farms					Percentage distribution				
		V. Small	Small	Medium	Large	Total	V.Small	Small	Medium	Large	Total
Antrim	28.3	351	289	137	24	801	44	36	17	3	100
Ards	37.7	366	229	125	73	793	46	29	16	9	100
Armagh	18.7	1,295	709	212	34	2,250	58	32	9	2	100
Ballymena	25.6	603	526	213	29	1,371	44	38	16	2	100
Ballymoney	31.2	321	308	133	37	799	40	39	17	5	100
Banbridge	24.0	663	383	165	38	1,249	53	31	13	3	100
Belfast	17.8	21	8	4	0	33	64	24	12	0	100
Carrickfergus	17.1	62	44	11	0	117	53	38	9	0	100
Castlereagh	36.2	73	29	19	13	134	54	22	14	10	100
Coleraine	31.7	312	312	136	42	802	39	39	17	5	100
Cookstown	20.7	839	476	166	31	1,512	55	31	11	2	100
Craigavon	24.3	415	205	82	27	729	57	28	11	4	100
Derry	22.7	258	268	57	16	599	43	45	10	3	100
Down	21.2	683	500	130	35	1,348	51	37	10	3	100
Dungannon	17.1	1,209	670	186	14	2,079	58	32	9	1	100
Fermanagh	14.8	2,077	1,284	217	15	3,593	58	36	6	0	100
Larne	27.2	219	259	75	18	571	38	45	13	3	100
Limavady	26.9	284	331	78	24	717	40	46	11	3	100
Lisburn	24.3	529	315	110	38	992	53	32	11	4	100
Magherafelt	18.2	780	550	129	15	1,474	53	37	9	1	100
Moyle	28.2	224	303	105	18	650	34	47	16	3	100
Newry & Mourne	15.1	1,896	917	200	30	3,043	62	30	7	1	100
Newtownabbey	25.4	136	107	39	8	290	47	37	13	3	100
North Down	36.8	41	24	17	9	91	45	26	19	10	100
Omagh	18.3	1,269	940	209	25	2,443	52	38	9	1	100
Strabane	26.3	609	561	198	43	1,411	43	40	14	3	100
Total	21.4	15,535	10,547	3,153	656	29,891	52	35	11	2	100

Table 6.3 Number of farms by farm type by District Council in Northern Ireland, June 2000

<i>District Council</i>	Farm type								Total	
	Cereals	General cropping	Horti-culture	Pigs & poultry	Dairy	Cattle & Sheep		Mixed		Others
						LFA	lowland			
Antrim	19	3	6	18	172	327	174	37	45	801
Ards	53	35	34	12	157	56	295	68	83	793
Armagh	36	20	124	60	325	906	536	99	144	2,250
Ballymena	11	15	8	57	334	578	236	67	65	1,371
Ballymoney	14	20	1	21	199	290	171	65	18	799
Banbridge	52	28	6	20	236	341	413	92	61	1,249
Belfast	0	0	1	0	0	18	8	2	4	33
Carrickfergus	1	0	2	4	17	83	0	1	9	117
Castlereagh	7	5	3	4	25	5	56	9	20	134
Coleraine	21	16	3	9	165	299	221	42	26	802
Cookstown	19	8	2	48	328	672	339	52	44	1,512
Craigavon	18	5	54	33	115	185	226	46	47	729
Derry	20	12	1	5	38	428	57	21	17	599
Down	40	17	8	24	130	627	309	86	107	1,348
Dungannon	17	8	29	46	374	1,098	345	65	97	2,079
Fermanagh	0	2	4	14	583	2,861	13	13	103	3,593
Larne	2	0	3	9	102	423	5	5	22	571
Limavady	18	19	3	5	54	425	137	37	19	717
Lisburn	45	24	31	29	157	268	316	51	71	992
Magherafelt	34	28	3	27	208	838	211	88	37	1,474
Moyle	9	8	2	6	61	525	13	19	7	650
Newry & Mourne	33	27	8	38	358	2,062	325	90	102	3,043
Newtownabbey	8	5	3	7	56	112	59	13	27	290
North Down	7	1	2	2	26	0	36	6	11	91
Omagh	6	5	3	32	409	1,805	86	31	66	2,443
Strabane	20	11	2	10	226	951	122	43	26	1,411
Total	510	322	346	540	4,855	16,183	4,709	1,148	1,278	29,891

Table 6.4 Number of farms by LFA designation by District Council in Northern Ireland, June 2000

<i>District Council</i>	LFA designation									
	Number of farms					Percentage distribution				
	Mainly SDA	Mainly DA	Mainly LFA	Mainly non-LFA	Total	Mainly SDA	Mainly DA	Mainly LFA	Mainly non-LFA	Total
Antrim	129	339	468	333	801	16	42	58	42	100
Ards	5	80	85	708	793	1	10	11	89	100
Armagh	370	884	1,254	996	2,250	16	39	56	44	100
Ballymena	405	484	889	482	1,371	30	35	65	35	100
Ballymoney	123	289	412	387	799	15	36	52	48	100
Banbridge	196	269	465	784	1,249	16	22	37	63	100
Belfast	19	5	24	9	33	58	15	73	27	100
Carrickfergus	48	68	116	1	117	41	58	99	1	100
Castlereagh	4	3	7	127	134	3	2	5	95	100
Coleraine	203	168	371	431	802	25	21	46	54	100
Cookstown	475	377	852	660	1,512	31	25	56	44	100
Craigavon	32	271	303	426	729	4	37	42	58	100
Derry	378	97	475	124	599	63	16	79	21	100
Down	219	601	820	528	1,348	16	45	61	39	100
Dungannon	450	1,048	1,498	581	2,079	22	50	72	28	100
Fermanagh	3,368	205	3,573	20	3,593	94	6	99	1	100
Larne	295	270	565	6	571	52	47	99	1	100
Limavady	387	96	483	234	717	54	13	67	33	100
Lisburn	100	286	386	606	992	10	29	39	61	100
Magherafelt	435	636	1,071	403	1,474	30	43	73	27	100
Moyle	416	199	615	35	650	64	31	95	5	100
Newry & Mourne	1,085	1,420	2,505	538	3,043	36	47	82	18	100
Newtownabbey	71	98	169	121	290	24	34	58	42	100
North Down	0	0	0	91	91	0	0	0	100	100
Omagh	1,475	814	2,289	154	2,443	60	33	94	6	100
Strabane	766	396	1,162	249	1,411	54	28	82	18	100
Total	11,454	9,403	20,857	9,034	29,891	38	31	70	30	100

Table 6.5 Crop areas by District Council in Northern Ireland, June 2000

<i>District Council</i>	Crop areas (hectares)								Total area farmed
	Cereals	Potatoes	Other farm crops	Horti-culture crops	Total crops	Grass	Rough grazing	Other land	
Antrim	1,319	116	88	12	1,535	29,154	3,115	890	34,693
Ards	4,358	650	258	840	6,105	22,585	423	1,001	30,114
Armagh	2,196	150	164	1,181	3,692	50,519	1,400	606	56,217
Ballymena	1,253	622	92	24	1,992	39,339	9,347	707	51,384
Ballymoney	1,645	431	163	7	2,246	25,360	4,422	933	32,960
Banbridge	3,175	425	147	22	3,769	31,764	2,189	372	38,094
Belfast	6	2	5	0	13	1,352	502	17	1,883
Carrickfergus	12	0	13	1	26	3,223	268	58	3,574
Castlereagh	601	72	7	27	707	4,585	1,340	172	6,804
Coleraine	2,657	388	158	5	3,209	28,304	6,526	741	38,780
Cookstown	1,264	98	92	4	1,459	35,842	5,842	566	43,709
Craigavon	1,168	167	83	502	1,920	18,562	516	285	21,283
Derry	1,643	255	163	37	2,098	20,597	5,634	876	29,205
Down	4,395	347	280	23	5,046	38,387	2,887	1,429	47,748
Dungannon	744	71	178	217	1,210	52,536	4,706	890	59,342
Fermanagh	1	2	94	18	116	110,470	15,378	2,210	128,174
Larne	167	45	31	4	247	22,140	8,699	328	31,414
Limavady	3,012	624	127	89	3,851	24,843	11,161	1,174	41,028
Lisburn	3,185	282	265	198	3,929	28,222	1,495	644	34,290
Magherafelt	2,441	510	178	6	3,135	35,525	13,129	1,141	52,931
Moyle	875	458	120	4	1,456	23,611	13,278	453	38,798
Newry & Mourne	1,518	683	237	37	2,474	55,322	5,507	585	63,888
Newtownabbey	429	51	33	7	519	9,509	982	61	11,070
North Down	453	8	39	6	506	2,810	4	629	3,950
Omagh	525	51	207	14	796	69,122	17,264	1,710	88,891
Strabane	1,686	265	96	9	2,056	45,755	20,532	1,939	70,282
Total	40,726	6,772	3,319	3,293	54,110	829,436	156,543	20,415	1,060,504

Note: Individual figures may not add to the totals shown.

Table 6.6 Livestock numbers by District Council in Northern Ireland, June 2000

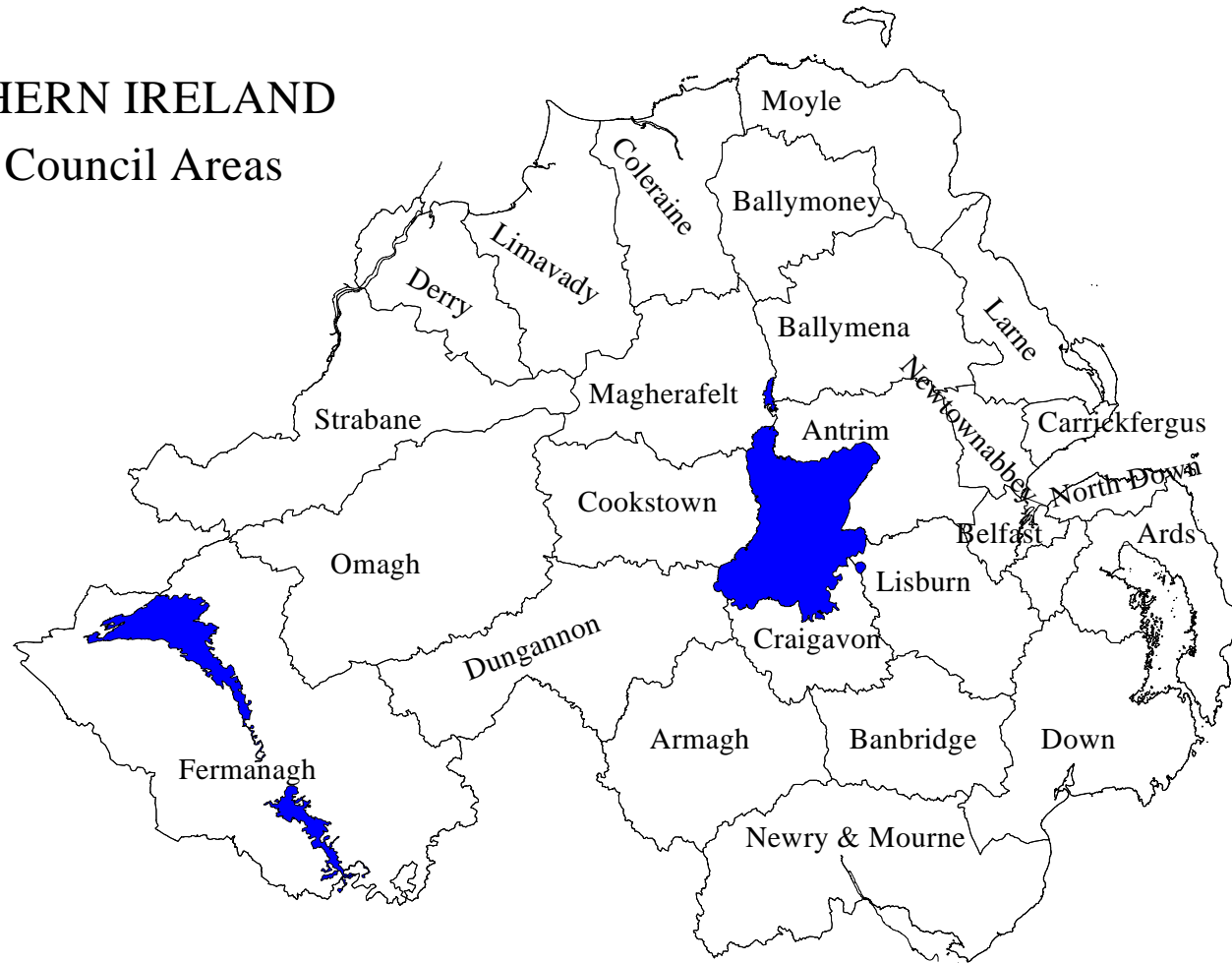
<i>District Council</i>	Livestock numbers							('000)	
	Dairy cows	Beef cows	Total cattle	Breeding ewes	Total sheep	Sows & gilts	Total pigs	Total poultry	
Antrim	11,404	11,641	63,088	36,196	75,255	701	5,875	659	
Ards	15,141	5,352	54,366	25,992	54,508	614	8,025	207	
Armagh	17,357	16,968	113,893	48,060	95,248	3,446	36,566	1,002	
Ballymena	17,828	13,181	85,623	68,628	143,821	1,661	13,726	2,613	
Ballymoney	14,111	6,450	57,533	43,379	91,386	2,203	23,035	1,040	
Banbridge	16,590	6,944	72,683	54,657	110,690	1,482	13,102	615	
Belfast	0	1,118	2,865	625	1,017	0	0	0	
Carrickfergus	897	1,153	5,285	6,826	14,612	35	297	2	
Castlereagh	2,916	990	10,096	4,514	8,864	96	872	129	
Coleraine	13,257	10,010	65,802	43,583	92,888	598	5,643	909	
Cookstown	16,580	12,862	86,982	34,035	69,590	6,981	72,340	967	
Craigavon	8,091	5,235	42,581	6,596	13,556	1,742	18,954	1,829	
Derry	3,618	7,183	30,633	67,264	143,631	140	1,222	5	
Down	9,890	15,718	75,801	72,411	149,572	2,331	21,754	264	
Dungannon	16,599	19,583	114,511	28,779	57,765	3,179	35,861	1,787	
Fermanagh	22,197	56,569	182,269	59,100	120,916	274	2,900	440	
Larne	6,143	9,272	38,843	66,482	138,981	342	1,547	119	
Limavady	4,353	9,377	41,946	90,981	185,297	347	1,216	47	
Lisburn	12,313	8,261	59,683	24,320	53,208	1,499	12,602	735	
Magherafelt	9,922	13,138	71,086	81,717	161,091	3,215	30,446	539	
Moyle	4,765	9,441	36,430	111,916	230,619	430	2,405	185	
Newry & Mourne	17,365	25,867	122,012	116,428	227,317	2,704	22,210	531	
Newtownabbey	3,533	3,814	20,199	7,665	16,726	947	14,569	155	
North Down	2,476	339	7,223	1,640	3,196	43	471	2	
Omagh	20,169	31,462	130,473	94,120	197,452	4,105	39,342	463	
Strabane	16,870	16,031	84,573	136,701	283,380	2,687	28,500	132	
Total	284,385	317,959	1,676,479	1,332,615	2,740,586	41,802	413,480	15,376	

Table 6.7 Labour force by District Council in Northern Ireland, June 2000

<i>District Council</i>	Farm labour force						Agricultural labour force
	Farmers & partners			Other workers			
	Full-time	Part-time	Spouses	Full-time	Part-time	Casual/seasonal	
Antrim	603	370	252	221	111	208	1,765
Ards	654	387	251	242	106	306	1,946
Armagh	1,457	1,206	516	195	277	900	4,551
Ballymena	1,067	637	426	131	115	361	2,737
Ballymoney	663	355	228	97	69	280	1,692
Banbridge	873	657	324	110	132	395	2,491
Belfast	22	22	3	9	1	11	68
Carrickfergus	73	68	37	12	25	36	251
Castlereagh	99	72	52	43	16	58	340
Coleraine	668	358	233	112	73	251	1,695
Cookstown	997	790	325	101	135	375	2,723
Craigavon	465	428	187	183	127	314	1,704
Derry	437	296	136	70	57	217	1,213
Down	948	698	296	153	163	422	2,680
Dungannon	1,346	1,106	423	141	188	554	3,758
Fermanagh	2,286	1,850	806	186	273	760	6,161
Larne	445	250	170	70	60	158	1,153
Limavady	545	360	159	86	105	297	1,552
Lisburn	701	542	310	144	118	332	2,147
Magherafelt	932	820	297	108	143	472	2,772
Moyle	532	283	165	44	63	226	1,313
Newry & Mourne	1,717	1,810	568	167	300	764	5,326
Newtownabbey	216	134	96	48	38	84	616
North Down	59	55	29	28	15	20	206
Omagh	1,680	1,180	453	145	189	584	4,231
Strabane	1,049	652	292	159	163	417	2,732
Total	20,534	15,386	7,034	3,005	3,062	8,802	57,823

NORTHERN IRELAND

District Council Areas



Reproduced from Ordnance Survey map of Northern Ireland. Crown copyright 2000.

SECTION 7

RURAL DISTRICT AND COUNTY STATISTICS, 2000

Tables showing the numbers of farms, crop areas, livestock numbers and persons working on farms in each Rural District and county in 2000.

Table 7.1	Number of farms by crops and grass area
Table 7.2	Number of farms by farm business size
Table 7.3	Number of farms by farm type
Table 7.4	Number of farms by Less Favoured Area designation
Table 7.5	Crop and grass areas
Table 7.6	Livestock numbers
Table 7.7	Farm labour force

Map of Rural Districts and counties

Table 7.1 Number of farms by crop & grass area by Rural District in Northern Ireland, June 2000

<i>Rural District</i>	Average crops & grass ha/farm	Crops & grass area									
		Number of farms					Percentage distribution				
		0-9.9	10-19.9	20-29.9	30+	Total	0-9.9	10-19.9	20-29.9	30+	Total
Antrim	36.3	242	173	122	410	947	26	18	13	43	100
Ballycastle	37.3	128	87	75	252	542	24	16	14	46	100
Ballymena	31.3	359	299	235	521	1,414	25	21	17	37	100
Ballymoney	36.0	202	175	130	405	912	22	19	14	44	100
Newtownabbey	32.7	7	7	4	8	26	27	27	15	31	100
Larne	37.3	205	145	121	329	800	26	18	15	41	100
Lisburn	33.7	136	115	75	193	519	26	22	14	37	100
Total Co. Antrim	34.9	1,289	1,006	767	2,132	5,194	25	19	15	41	100
Armagh	23.1	661	543	303	518	2,025	33	27	15	26	100
Lurgan	22.9	160	95	65	108	428	37	22	15	25	100
Newry No 2	20.0	581	526	260	336	1,703	34	31	15	20	100
Tandragee	31.8	48	37	25	68	178	27	21	14	38	100
Total Co. Armagh	22.2	1,456	1,205	655	1,032	4,348	33	28	15	24	100
Banbridge	27.8	361	311	175	409	1,256	29	25	14	33	100
Castlereagh	34.5	18	14	12	18	62	29	23	19	29	100
East Down	34.0	270	219	181	411	1,081	25	20	17	38	100
Hillsborough	31.9	195	139	83	228	645	30	22	13	35	100
South Down	19.9	309	193	111	142	755	41	26	15	19	100
Moria	34.9	84	53	27	112	276	30	19	10	41	100
Newry No 1	20.6	298	250	138	194	880	34	28	16	22	100
North Down	36.3	234	153	120	361	868	27	18	14	42	100
Total Co. Down	29.0	1,776	1,341	852	1,881	5,850	30	23	15	32	100
Enniskillen	32.6	228	284	218	492	1,222	19	23	18	40	100
Irvinestown	32.8	210	208	116	317	851	25	24	14	37	100
Lisnaskea	28.2	327	385	234	506	1,452	23	27	16	35	100
Total Co. Fermanagh	30.9	765	877	568	1,315	3,525	22	25	16	37	100
Coleraine	37.3	176	173	121	416	886	20	20	14	47	100
Limavady	39.4	166	161	92	354	773	21	21	12	46	100
Londonderry	39.0	99	118	77	260	554	18	21	14	47	100
Magherafelt	26.1	486	422	283	495	1,686	29	25	17	29	100
Total Co. Londonderry	33.1	928	874	573	1,527	3,902	24	22	15	39	100
Castleerg	27.7	164	165	111	193	633	26	26	18	30	100
Clogher	30.2	148	184	147	296	775	19	24	19	38	100
Cookstown	23.7	330	322	176	319	1,147	29	28	15	28	100
Dungannon	24.1	431	359	229	378	1,397	31	26	16	27	100
Omagh	28.8	474	613	415	800	2,302	21	27	18	35	100
Strabane	37.0	147	163	139	366	815	18	20	17	45	100
Total Co. Tyrone	28.1	1,695	1,807	1,217	2,353	7,072	24	26	17	33	100
Northern Ireland Total	29.6	7,909	7,110	4,632	10,240	29,891	26	24	15	34	100

Note: County totals include figures for Urban areas.

Table 7.2 Number of farms by business size by Rural District in Northern Ireland, June 2000

<i>Rural District</i>	Average SGM/farm '000 ECU's)	Business size									
		Number of farms					Percentage distribution				
		V. Small	Small	Medium	Large	Total	V.Small	Small	Medium	Large	Total
Antrim	26.8	427	342	152	26	947	45	36	16	3	100
Ballycastle	27.3	174	274	82	12	542	32	51	15	2	100
Ballymena	26.7	612	543	224	35	1,414	43	38	16	2	100
Ballymoney	32.5	374	322	169	47	912	41	35	19	5	100
Newtownabbey	30.2	13	9	2	2	26	50	35	8	8	100
Larne	25.3	330	349	100	21	800	41	44	13	3	100
Lisburn	22.0	268	184	55	12	519	52	35	11	2	100
Total Co. Antrim	27.1	2,216	2,034	789	155	5,194	43	39	15	3	100
Armagh	17.8	1,182	645	167	31	2,025	58	32	8	2	100
Lurgan	17.9	263	121	36	8	428	61	28	8	2	100
Newry No 2	14.7	1,108	468	107	20	1,703	65	27	6	1	100
Tandragee	23.4	90	57	29	2	178	51	32	16	1	100
Total Co. Armagh	16.9	2,649	1,297	341	61	4,348	61	30	8	1	100
Banbridge	23.2	676	386	159	35	1,256	54	31	13	3	100
Castlereagh	36.6	33	14	10	5	62	53	23	16	8	100
East Down	22.1	535	411	105	30	1,081	49	38	10	3	100
Hillsborough	26.6	372	160	78	35	645	58	25	12	5	100
South Down	17.0	423	266	58	8	755	56	35	8	1	100
Moria	30.3	137	79	41	19	276	50	29	15	7	100
Newry No 1	17.3	509	285	75	11	880	58	32	9	1	100
North Down	37.4	395	253	140	80	868	46	29	16	9	100
Total Co. Down	24.3	3,095	1,861	670	224	5,850	53	32	11	4	100
Enniskillen	15.6	652	491	74	5	1,222	53	40	6	0	100
Irvinestown	13.0	547	258	43	3	851	64	30	5	0	100
Lisnaskea	15.2	836	515	95	6	1,452	58	35	7	0	100
Total Co. Fermanagh	14.8	2,035	1,264	212	14	3,525	58	36	6	0	100
Coleraine	28.0	358	362	133	33	886	40	41	15	4	100
Limavady	26.3	316	349	82	26	773	41	45	11	3	100
Londonderry	23.5	231	253	55	15	554	42	46	10	3	100
Magherafelt	19.3	896	602	165	23	1,686	53	36	10	1	100
Total Co. Londonderry	23.3	1,803	1,566	436	97	3,902	46	40	11	2	100
Castlederg	22.3	319	223	77	14	633	50	35	12	2	100
Clogher	19.0	395	299	74	7	775	51	39	10	1	100
Cookstown	19.4	648	365	114	20	1,147	56	32	10	2	100
Dungannon	17.2	858	407	122	10	1,397	61	29	9	1	100
Omagh	18.5	1,202	871	204	25	2,302	52	38	9	1	100
Strabane	27.9	313	360	113	29	815	38	44	14	4	100
Total Co. Tyrone	19.9	3,737	2,525	705	105	7,072	53	36	10	1	100
Northern Ireland Total	21.4	15,535	10,547	3,153	656	29,891	52	35	11	2	100

Note: County totals include figures for Urban areas.

Table 7.3 Number of farms by farm type by Rural District in Northern Ireland, June 2000

<i>Rural District</i>	Farm type									Total
	Cereals	General cropping	Horti-culture	Pigs & poultry	Dairy	Cattle & Sheep		Mixed	Others	
						LFA	lowland			
Antrim	19	4	8	25	203	358	214	46	70	947
Ballycastle	6	7	0	3	40	465	6	11	4	542
Ballymena	16	16	7	61	343	607	234	69	61	1,414
Ballymoney	17	23	2	22	241	312	200	75	20	912
Newtownabbey	1	0	2	2	2	14	2	1	2	26
Larne	3	2	4	11	135	576	21	9	39	800
Lisburn	23	6	26	15	79	219	103	14	34	519
Total Co. Antrim	87	60	49	140	1,045	2,569	785	226	233	5,194
Armagh	26	13	122	52	282	928	389	84	129	2,025
Lurgan	1	2	51	19	51	138	100	35	31	428
Newry No 2	8	1	4	15	236	1,283	90	8	58	1,703
Tandragee	11	3	5	7	31	2	95	17	7	178
Total Co. Armagh	47	19	184	94	605	2,352	676	144	227	4,348
Banbridge	46	26	5	22	229	370	414	87	57	1,256
Castlereagh	4	0	4	0	13	0	28	6	7	62
East Down	41	15	7	21	105	419	315	77	81	1,081
Hillsborough	19	14	11	15	112	134	233	36	71	645
South Down	7	17	3	8	49	484	117	43	27	755
Moria	24	8	4	13	57	6	126	22	16	276
Newry No 1	23	15	2	16	109	460	176	50	29	880
North Down	59	40	33	16	179	64	313	74	90	868
Total Co. Down	224	135	70	111	858	1,939	1,737	395	381	5,850
Enniskillen	0	0	3	5	214	968	4	2	26	1,222
Irvinestown	0	0	0	0	67	755	2	2	25	851
Lisnaskea	0	2	2	10	286	1,083	9	10	50	1,452
Total Co. Fermanagh	0	2	5	15	567	2,806	15	14	101	3,525
Coleraine	26	13	4	10	164	353	240	51	25	886
Limavady	17	19	3	6	59	487	123	38	21	773
Londonderry	20	11	1	6	36	374	69	24	13	554
Magherafelt	39	31	3	35	279	857	301	98	43	1,686
Total Co. Londonderry	102	74	11	57	538	2,072	735	211	102	3,902
Castlederg	5	2	0	8	97	475	23	9	14	633
Clogher	1	1	0	12	153	540	40	10	18	775
Cookstown	9	5	2	38	230	597	203	26	37	1,147
Dungannon	15	10	20	35	241	625	311	54	86	1,397
Omagh	6	7	3	27	389	1,673	103	29	65	2,302
Strabane	14	7	2	3	131	533	81	30	14	815
Total Co. Tyrone	50	32	27	123	1,242	4,445	761	158	234	7,072
Northern Ireland Total	510	322	346	540	4,855	16,183	4,709	1,148	1,278	29,891

Note: County totals include figures for Urban areas.

Table 7.4 Number of farms by LFA designation by Rural District in Northern Ireland, June 2000

<i>Rural District</i>	LFA designation									
	Number of farms					Percentage distribution				
	Mainly SDA	Mainly DA	Mainly LFA	Mainly non-LFA	Total	Mainly SDA	Mainly DA	Mainly LFA	Mainly non-LFA	Total
Antrim	178	354	532	415	947	19	37	56	44	100
Ballycastle	371	158	529	13	542	68	29	98	2	100
Ballymena	395	528	923	491	1,414	28	37	65	35	100
Ballymoney	116	348	464	448	912	13	38	51	49	100
Newtownabbey	12	10	22	4	26	46	38	85	15	100
Larne	394	377	771	29	800	49	47	96	4	100
Lisburn	116	204	320	199	519	22	39	62	38	100
Total Co. Antrim	1,598	1,985	3,583	1,611	5,194	31	38	69	31	100
Armagh	373	914	1,287	738	2,025	18	45	64	36	100
Lurgan	20	217	237	191	428	5	51	55	45	100
Newry No 2	546	1,016	1,562	141	1,703	32	60	92	8	100
Tandragee	0	4	4	174	178	0	2	2	98	100
Total Co. Armagh	940	2,156	3,096	1,252	4,348	22	50	71	29	100
Banbridge	211	280	491	765	1,256	17	22	39	61	100
Castlereagh	1	0	1	61	62	2	0	2	98	100
East Down	105	465	570	511	1,081	10	43	53	47	100
Hillsborough	16	186	202	443	645	2	29	31	69	100
South Down	363	191	554	201	755	48	25	73	27	100
Moria	2	6	8	268	276	1	2	3	97	100
Newry No 1	272	304	576	304	880	31	35	65	35	100
North Down	9	87	96	772	868	1	10	11	89	100
Total Co. Down	980	1,520	2,500	3,350	5,850	17	26	43	57	100
Enniskillen	1,174	44	1,218	4	1,222	96	4	100	0	100
Irvinestown	827	21	848	3	851	97	2	100	0	100
Lisnaskea	1,300	136	1,436	16	1,452	90	9	99	1	100
Total Co. Fermanagh	3,301	201	3,502	23	3,525	94	6	99	1	100
Coleraine	225	212	437	449	886	25	24	49	51	100
Limavady	444	107	551	222	773	57	14	71	29	100
Londonderry	328	87	415	139	554	59	16	75	25	100
Magherafelt	473	611	1,084	602	1,686	28	36	64	36	100
Total Co. Londonderry	1,471	1,017	2,488	1,414	3,902	38	26	64	36	100
Castlederg	409	169	578	55	633	65	27	91	9	100
Clogher	341	370	711	64	775	44	48	92	8	100
Cookstown	415	339	754	393	1,147	36	30	66	34	100
Dungannon	192	676	868	529	1,397	14	48	62	38	100
Omagh	1,385	739	2,124	178	2,302	60	32	92	8	100
Strabane	422	228	650	165	815	52	28	80	20	100
Total Co. Tyrone	3,164	2,524	5,688	1,384	7,072	45	36	80	20	100
Northern Ireland Total	11,454	9,403	20,857	9,034	29,891	38	31	70	30	100

Note: County totals include figures for Urban areas.

Table 7.5 Crop And Grass Areas by Rural District in Northern Ireland, June 2000

<i>Rural District</i>	Crop areas (hectares)								Total area farmed
	Cereals	Potatoes	Other farm crops	Horti-culture crops	Total crops	Grass	Rough grazing	Other land	
Antrim	1,530	75	110	14	1,730	32,623	3,570	824	38,747
Ballycastle	595	444	106	0	1,146	19,051	10,960	310	31,466
Ballymena	1,376	681	92	20	2,168	42,090	9,854	798	54,911
Ballymoney	2,183	538	176	7	2,904	29,928	3,925	1,045	37,801
Newtownabbey	40	0	2	4	46	803	59	6	914
Larne	214	74	56	4	348	29,494	11,326	412	41,580
Lisburn	1,438	42	69	109	1,658	15,849	1,790	380	19,677
Total Co. Antrim	7,425	1,858	612	159	10,054	170,965	41,932	3,781	226,733
Armagh	1,153	87	142	1,225	2,606	44,148	1,368	655	48,777
Lurgan	243	65	17	438	763	9,041	337	106	10,247
Newry No 2	372	7	105	27	510	33,473	2,824	176	36,983
Tandragee	831	66	10	71	979	4,680	36	142	5,837
Total Co. Armagh	2,631	225	274	1,763	4,894	91,523	4,569	1,085	102,071
Banbridge	2,829	402	158	20	3,409	31,500	2,344	341	37,594
Castlereagh	260	6	5	9	280	1,858	1,074	161	3,373
East Down	4,155	279	231	81	4,746	32,032	1,959	1,367	40,104
Hillsborough	1,706	161	148	61	2,075	18,505	617	499	21,695
South Down	687	494	129	10	1,320	13,707	1,998	310	17,334
Moria	1,377	187	107	38	1,709	7,929	185	160	9,983
Newry No 1	1,172	277	79	2	1,530	16,626	1,341	121	19,617
North Down	4,808	711	286	804	6,609	24,882	453	1,485	33,428
Total Co. Down	17,018	2,517	1,152	1,025	21,713	147,857	9,972	4,493	184,034
Enniskillen	1	0	5	4	9	39,874	7,668	755	48,306
Irvinestown	0	1	34	1	36	27,907	4,298	732	32,973
Lisnaskea	13	1	56	14	84	40,910	3,487	730	45,212
Total Co. Fermanagh	14	2	94	19	130	108,691	15,453	2,217	126,491
Coleraine	2,717	334	155	8	3,214	29,817	6,782	788	40,602
Limavady	2,935	634	131	89	3,789	26,679	11,933	1,198	43,598
Londonderry	1,800	248	159	37	2,245	19,383	4,973	869	27,469
Magherafelt	2,822	532	188	6	3,549	40,408	12,864	1,235	58,054
Total Co. Londonderry	10,274	1,747	633	141	12,796	116,511	36,555	4,089	169,950
Castledearg	170	19	36	0	226	17,318	7,261	306	25,110
Clogher	85	4	65	0	154	23,279	3,762	449	27,644
Cookstown	560	36	78	4	678	26,514	4,792	379	32,363
Dungannon	690	69	115	159	1,033	32,656	1,113	343	35,145
Omagh	537	91	195	14	837	65,488	17,048	1,734	85,107
Strabane	1,320	203	64	9	1,596	28,558	14,079	1,537	45,770
Total Co. Tyrone	3,363	422	553	186	4,524	193,889	48,062	4,749	251,225
Northern Ireland Total	40,726	6,772	3,319	3,293	54,110	829,436	156,543	20,415	1,060,504

Note: County totals include figures for Urban areas.

Table 7.6 Livestock numbers by Rural District in Northern Ireland, June 2000

<i>Rural District</i>	Livestock numbers							
	Dairy cows	Beef cows	Total cattle	Breeding ewes	Total sheep	Sows & gilts	Total pigs	Total poultry ('000)
Antrim	13,015	12,308	68,847	39,603	84,263	958	12,746	749
Ballycastle	2,914	8,881	29,684	96,905	201,591	416	2,351	101
Ballymena	18,610	14,143	90,728	74,194	153,966	3,433	30,394	3,094
Ballymoney	18,092	6,937	69,950	45,863	96,968	465	6,705	1,066
Newtownabbey	93	548	1,633	72	144	710	7,215	14
Larne	8,082	12,071	52,249	83,649	173,324	385	2,474	112
Lisburn	5,096	6,828	33,119	6,644	13,830	405	3,377	483
Total Co. Antrim	66,022	62,253	348,191	350,014	731,106	6,775	65,296	5,702
Armagh	14,420	15,696	100,279	36,360	73,709	3,565	34,876	835
Lurgan	2,705	3,021	19,659	2,536	5,193	971	9,879	151
Newry No 2	11,358	16,070	76,094	37,885	73,164	1,145	9,218	221
Tandragee	1,808	1,084	10,484	7,267	13,769	441	5,454	31
Total Co. Armagh	30,504	35,886	206,958	84,235	166,204	6,122	59,427	1,238
Banbridge	15,988	7,130	71,469	56,967	114,846	1,566	13,545	580
Castlereagh	1,586	231	4,836	1,797	3,364	15	86	0
East Down	7,800	12,839	63,015	54,513	115,673	2,636	26,952	216
Hillsborough	10,293	4,238	40,600	18,797	40,483	1,271	11,179	235
South Down	3,298	6,357	27,967	56,456	110,168	545	4,390	16
Moria	4,772	1,430	19,448	3,985	8,794	535	6,442	468
Newry No 1	5,874	6,112	35,296	45,495	89,195	1,063	9,161	370
North Down	17,248	5,605	59,893	26,492	55,013	119	1,362	303
Total Co. Down	67,195	44,306	324,462	265,279	539,052	7,752	73,128	2,188
Enniskillen	7,731	20,371	64,536	27,672	56,358	125	1,324	11
Irvinestown	2,792	15,971	41,825	15,710	32,364	10	69	17
Lisnaskea	11,012	19,564	72,823	14,484	30,131	134	1,478	421
Total Co. Fermanagh	21,535	55,906	179,184	57,866	118,853	269	2,871	450
Coleraine	12,065	11,296	67,692	46,843	98,558	805	7,664	537
Limavady	4,712	9,880	43,499	98,095	203,274	403	1,521	47
Londonderry	3,543	6,761	30,004	60,579	127,076	136	1,124	6
Magherafelt	13,485	14,438	85,745	80,893	160,796	5,884	56,022	659
Total Co. Londonderry	33,805	42,565	227,218	286,450	589,745	7,228	66,331	1,248
Castledearg	6,676	6,366	30,623	55,957	114,982	1,643	17,868	11
Clogher	6,782	11,121	49,736	14,020	28,274	1,209	15,688	617
Cookstown	11,512	10,240	63,400	27,169	55,499	4,075	44,760	720
Dungannon	11,035	9,896	70,625	16,434	33,158	1,729	19,084	2,627
Omagh	19,103	29,844	123,923	89,355	187,780	3,953	39,082	469
Strabane	10,133	9,563	51,983	85,818	175,885	1,047	9,945	107
Total Co. Tyrone	65,324	77,043	390,466	288,771	595,626	13,656	146,427	4,549
Northern Ireland Total	284,385	317,959	1,676,479	1,332,615	2,740,586	41,802	413,480	15,376

Note: County totals include figures for Urban areas.

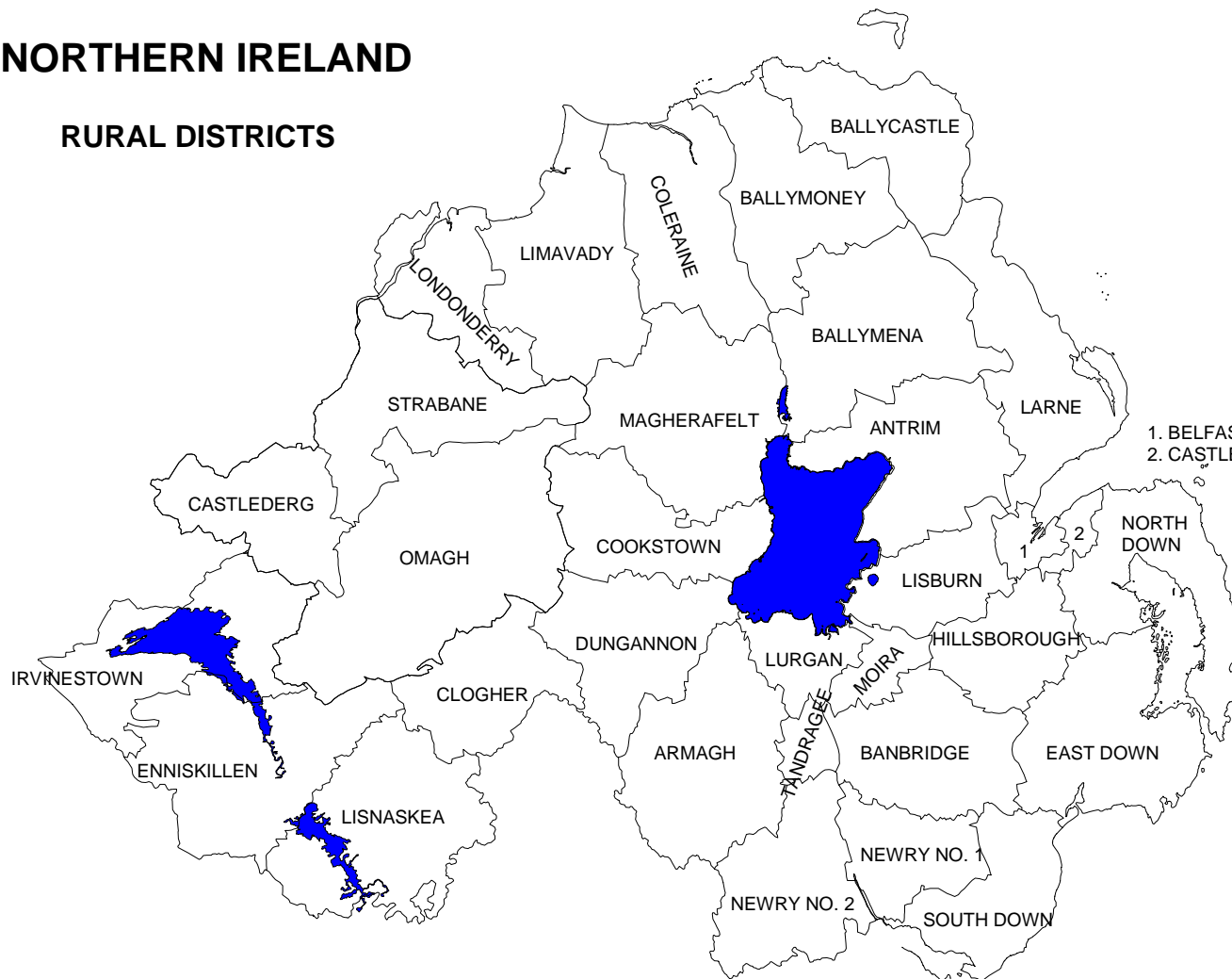
Table 7.7 Labour force by Rural District in Northern Ireland, June 2000

<i>Rural District</i>	Farm labour force						Agricultural labour force
	Farmers & partners			Other workers			
	Full-time	Part-time	Spouses	Full-time	Part-time	Casual/seasonal	
Antrim	693	462	305	225	128	269	2,082
Ballycastle	448	234	132	39	46	201	1,100
Ballymena	1,108	651	437	157	124	361	2,838
Ballymoney	777	399	271	100	77	317	1,941
Newtownabbey	16	14	7	23	7	10	77
Larne	600	361	233	93	98	218	1,603
Lisburn	369	276	141	58	67	166	1,077
Total Co. Antrim	4,035	2,413	1,535	700	550	1,548	10,781
Armagh	1,284	1,109	446	170	279	832	4,120
Lurgan	257	256	108	55	68	223	967
Newry No 2	914	1,036	277	94	129	345	2,795
Tandragee	137	88	50	15	10	38	338
Total Co. Armagh	2,606	2,493	884	339	489	1,439	8,250
Banbridge	886	653	318	105	126	382	2,470
Castlereagh	38	38	23	23	5	15	142
East Down	764	562	233	190	155	393	2,297
Hillsborough	429	376	215	117	62	195	1,394
South Down	483	429	166	48	95	284	1,505
Moria	194	155	81	22	25	112	589
Newry No 1	549	487	196	45	97	213	1,587
North Down	712	419	284	219	113	319	2,066
Total Co. Down	4,074	3,130	1,524	783	683	1,922	12,116
Enniskillen	854	556	266	77	95	303	2,151
Irvinestown	506	488	203	26	65	170	1,458
Lisnaskea	879	773	319	79	106	276	2,432
Total Co. Fermanagh	2,239	1,817	788	182	266	749	6,041
Coleraine	692	423	237	99	83	307	1,841
Limavady	576	399	168	89	109	329	1,670
Londonderry	416	253	128	68	53	193	1,111
Magherafelt	1,091	922	353	133	167	524	3,190
Total Co. Londonderry	2,775	2,000	886	389	413	1,353	7,816
Castleerg	418	305	108	54	58	150	1,093
Clogher	560	372	148	55	57	171	1,363
Cookstown	743	594	236	70	99	243	1,985
Dungannon	865	763	308	185	158	401	2,680
Omagh	1,578	1,127	440	146	186	580	4,057
Strabane	639	371	176	102	103	246	1,637
Total Co. Tyrone	4,805	3,533	1,417	612	661	1,791	12,819
Northern Ireland Total	20,534	15,386	7,034	3,005	3,062	8,802	57,823

Note: County totals include figures for Urban areas.

NORTHERN IRELAND

RURAL DISTRICTS



URBAN DISTRICTS (UD)

NOT SHOWN ON MAP

- 5. NEWTOWNABBEY UD
- 9. BELFAST (CO. ANTRIM)
- 24. BELFAST (CO. DOWN) UD

AGGREGATES OF UDS IN:

- 8. CO. ANTRIM
- 14. CO. ARMAGH
- 23. CO. DOWN
- 28. CO. FERMANAGH
- 33. CO. LONDONDERRY
- 40. CO. TYRONE

- 1. BELFAST
- 2. CASTLEREAGH

Reproduced from Ordnance map of Northern Ireland. Crown copyright 2000.

SECTION 8

LESS FAVOURED AREA STATISTICS, 2000

Tables showing the numbers of farms, crop areas, livestock numbers and persons working on farms which are wholly or mainly in areas classed as Severely Disadvantaged (SDA), Disadvantaged (DA) or Lowland.

Table 8.1 Number of farms by
 (a) farm type;
 (b) farm business size.

Table 8.2 Crop areas

Table 8.3 Numbers of cattle

Table 8.4 Numbers of sheep, horses, goats

Table 8.5 Numbers of pigs, poultry

Table 8.6 Farm labour force

Map of Less Favoured areas

Table 8.1 Numbers of farms by (a) type of farm and (b) farm business size by LFA category, June 2000

	LFA category				N.Ireland total	LFA % of N.Ireland
	Mainly SDA	Mainly DA	Mainly LFA	Mainly non-LFA		
Farm type:						
Cereals	20	104	124	386	510	24.3
General cropping	11	82	93	229	322	28.9
Horticulture	14	87	101	245	346	29.2
Pigs & poultry	107	163	270	270	540	50.0
Dairy	1,148	1,770	2,918	1,937	4,855	60.1
Cattle & sheep: LFA	9,738	6,445	16,183	0	16,183	100.0
Cattle & Sheep: lowland	0	0	0	4,709	4,709	0.0
Mixed	101	327	428	720	1,148	37.3
Other type	315	425	740	538	1,278	57.9
All types	11,454	9,403	20,857	9,034	29,891	69.8
Farm business size:						
Very small	6,120	5,091	11,211	4,324	15,535	72.2
Small	4,539	3,151	7,690	2,857	10,547	72.9
Medium	735	994	1,729	1,424	3,153	54.8
Large	60	167	227	429	656	34.6
Total	11,454	9,403	20,857	9,034	29,891	69.8

Table 8.2 Areas of crops, grass, rough grazing & other land by LFA category, June 2000

	LFA category				N.Ireland total	LFA % of N.Ireland
	Mainly SDA	Mainly DA	Mainly LFA	Mainly non-LFA		
Crops & grass						
Cereal crops:						
Oats	209	476	685	2,257	2,943	23.3
Wheat	113	341	454	4,536	4,990	9.1
Winter barley	157	577	734	4,468	5,201	14.1
Spring barley	1,537	5,690	7,226	20,213	27,440	26.3
Mixed corn	11	70	81	72	153	52.7
Total cereals	2,026	7,153	9,179	31,547	40,726	22.5
Other crops:						
Potatoes	361	1,461	1,823	4,949	6,772	26.9
Other field crops	845	894	1,739	1,580	3,319	52.4
Fruit, vegetables & flowers:						
Fruit	37	292	329	1,294	1,623	20.3
Vegetables	8	284	292	1,236	1,528	19.1
Flowers	17	33	50	93	143	34.8
Total fruit, vegetables & flowers	61	609	670	2,623	3,293	20.4
Total crops	3,294	10,118	13,411	40,699	54,110	24.8
Grass under 5 years old	43,892	41,617	85,509	56,045	141,554	60.4
Grass 5 years old & over	276,361	206,217	482,577	205,306	687,883	70.2
Total grass	320,253	247,833	568,086	261,350	829,436	68.5
Total crops and grass	323,546	257,951	581,497	302,049	883,546	65.8
Rough grazing	133,852	14,561	148,413	8,129	156,543	94.8
Woods & plantations	2,783	2,148	4,931	3,692	8,623	57.2
Other land	3,842	2,827	6,669	5,123	11,792	56.6
Total agricultural area	464,024	277,487	741,511	318,992	1,060,504	69.9

Table 8.3 Numbers of cattle by LFA category, June 2000

<i>Cattle</i>	LFA category				N.Ireland total	LFA % of N.Ireland
	Mainly SDA	Mainly DA	Mainly LFA	Mainly non-LFA		
<i>Dairy cows</i>						
In milk	43,424	88,382	131,806	133,930	265,736	49.6
In calf but not in milk	3,830	6,374	10,204	8,445	18,649	54.7
Total dairy cows	47,254	94,756	142,010	142,375	284,385	49.9
<i>Beef cows</i>						
In milk	139,575	73,519	213,094	49,102	262,196	81.3
In calf but not in milk	29,600	15,576	45,176	10,587	55,763	81.0
Total beef cows	169,175	89,095	258,270	59,689	317,959	81.2
Total cows	216,429	183,851	400,280	202,064	602,344	66.5
<i>Dairy heifers in calf</i>						
2 years old & over	4,046	8,262	12,308	13,724	26,032	47.3
Under 2 years	4,672	10,574	15,246	19,600	34,846	43.8
<i>Beef heifers in calf</i>						
2 years old & over	8,780	5,529	14,309	4,583	18,892	75.7
Under 2 years	5,879	3,585	9,464	3,163	12,627	75.0
<i>Bulls being used for service:</i>						
2 years old & over	5,289	3,801	9,090	3,531	12,621	72.0
1 year old & under 2 years	1,267	1,140	2,407	1,252	3,659	65.8
<i>All other cattle & calves :</i>						
<i>2 years old & over:</i>						
Male	10,572	24,070	34,642	34,308	68,950	50.2
Females intended for slaughter	5,293	9,179	14,472	11,948	26,420	54.8
Other females	3,808	3,763	7,571	3,868	11,439	66.2
<i>1 year old & under 2 years:</i>						
Male	44,380	68,163	112,543	84,970	197,513	57.0
Females intended for slaughter	32,803	43,056	75,859	51,045	126,904	59.8
Other females	17,672	20,008	37,680	25,691	63,371	59.5
<i>6 months old and under 1 year:</i>						
Male	26,968	25,629	52,597	31,400	83,997	62.6
Female	28,028	29,531	57,559	38,162	95,721	60.1
<i>Under 6 months old:</i>						
Male	58,575	41,111	99,686	38,787	138,473	72.0
Female	61,034	45,538	106,572	46,098	152,670	69.8
Total cattle & calves	535,495	526,790	1,062,285	614,194	1,676,479	63.4

Table 8.4 Numbers of sheep, horses & goats by LFA category, June 2000

	LFA category				N.Ireland total	LFA % of N.Ireland
	Mainly SDA	Mainly DA	Mainly LFA	Mainly non-LFA		
Sheep for breeding:						
Put to the ram in 1998	644,553	282,086	926,639	255,808	1,182,447	78.4
Others 1 year old & over	92,073	30,402	122,475	27,693	150,168	81.6
Total breeding ewes	736,626	312,488	1,049,114	283,501	1,332,615	78.7
Rams for service	17,231	7,781	25,012	7,190	32,202	77.7
Other sheep & lambs:						
1 year old & over	5,030	1,328	6,358	1,868	8,226	77.3
Under 1 year	734,383	340,083	1,074,466	293,077	1,367,543	78.6
Total sheep	1,493,270	661,680	2,154,950	585,636	2,740,586	78.6
Horses						
Brood mares:						
Horses	398	645	1,043	1,140	2,183	47.8
Ponies	265	264	529	304	833	63.5
Total mares	663	909	1,572	1,444	3,016	52.1
Stallions	43	65	108	132	240	45.0
Other horses	545	1,303	1,848	2,327	4,175	44.3
Other ponies	504	591	1,095	1,015	2,110	51.9
Total horses & ponies	1,755	2,868	4,623	4,918	9,541	48.5
Total goats	1,489	930	2,419	939	3,358	72.0

Table 8.5 Numbers of pigs and poultry by LFA category, June 2000


	LFA category				N.Ireland total	LFA % of N.Ireland
	Mainly SDA	Mainly DA	Mainly LFA	Mainly non-LFA		
Pigs						
Breeding herd:						
Sows in pig	3,993	8,267	12,260	15,565	27,825	44.1
Gilts in pig	838	1,268	2,106	3,077	5,183	40.6
Other breeding sows	1,378	2,397	3,775	5,019	8,794	42.9
Total female breeding herd	6,209	11,932	18,141	23,661	41,802	43.4
Maiden gilts	578	791	1,369	2,282	3,651	37.5
Boars being used for service	226	374	600	745	1,345	44.6
Other pigs:						
110 Kg & over	366	1,765	2,131	428	2,559	83.3
80 Kg and under 110 Kg	6,319	14,624	20,943	31,397	52,340	40.0
50 Kg and under 80 Kg	11,793	26,231	38,024	68,725	106,749	35.6
20 Kg and under 50 Kg	14,665	31,941	46,606	59,487	106,093	43.9
Under 20 Kg	14,696	27,510	42,206	56,735	98,941	42.7
Total pigs	54,852	115,168	170,020	243,460	413,480	41.1
Poultry ('000)						
Commercial laying flock:						
Hens (1st cycle)	720	638	1,358	692	2,050	66.3
Hens (moulted)	65	91	156	94	250	62.2
Total laying birds	785	729	1,514	786	2,300	65.8
Growing pullets	70	253	323	476	798	40.4
Breeding flock	285	533	818	1,378	2,196	37.2
Broilers & other table birds	1,088	3,876	4,964	4,691	9,655	51.4
Total ordinary fowl	2,228	5,391	7,619	7,331	14,950	51.0
Other poultry	104	148	252	174	426	59.1
Total poultry	2,332	5,539	7,871	7,505	15,376	51.2

Table 8.6 Farm labour force on farms by LFA category, June 2000

	LFA category				N.Ireland total	LFA % of N.Ireland
	Mainly SDA	Mainly DA	Mainly LFA	Mainly non-LFA		
<i>Farmers, partners & directors:</i>						
Full-time	7,321	6,379	13,700	6,834	20,534	66.7
Part-time	5,951	4,944	10,895	4,491	15,386	70.8
Total	13,272	11,323	24,595	11,325	35,920	68.5
Spouses	2,350	2,195	4,545	2,489	7,034	64.6
<i>Other / paid workers</i>						
Full-time	746	719	1,465	1,540	3,005	48.8
Part-time	1,072	887	1,959	1,103	3,062	64.0
Casual/seasonal	2,729	2,624	5,353	3,449	8,802	60.8
Total other / paid workers	4,547	4,230	8,777	6,092	14,869	59.0
Total agricultural labour force	20,169	17,748	37,917	19,906	57,823	65.6

Northern Ireland Less Favoured Areas

 Severely Disadvantaged Areas

 Disadvantaged Areas

