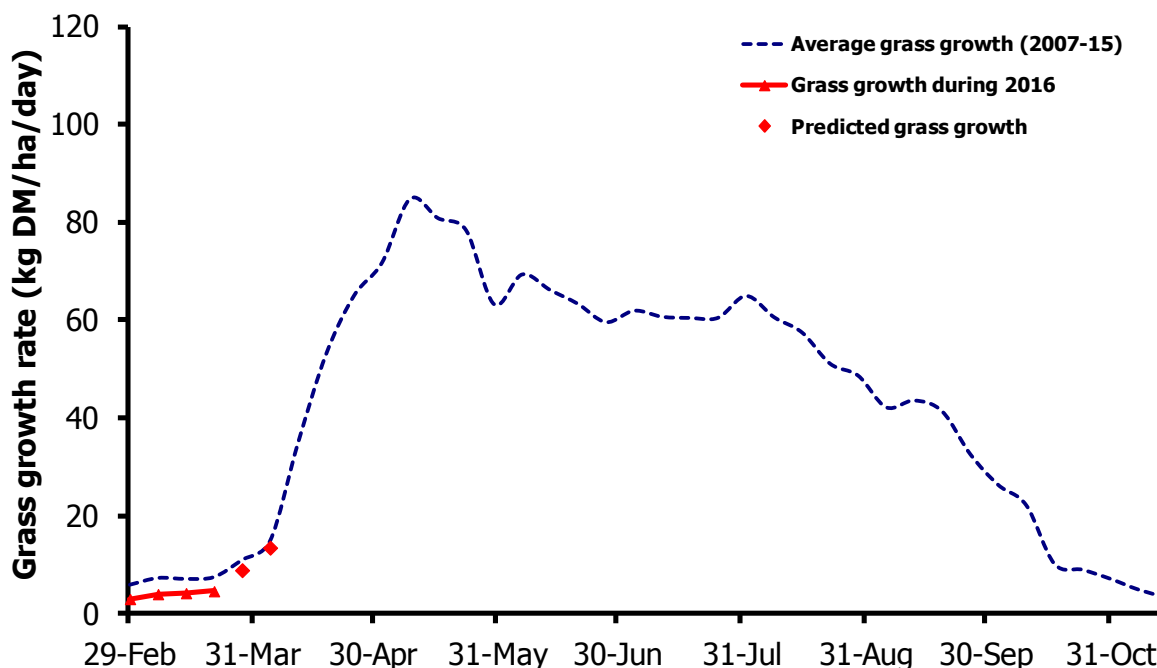


GrassCheck

Week beginning 21 March 2016



Grass growth and quality measured from swards at Hillsborough and Greenmount

Grass Growth (kg DM/ha/day)*		
Previous 3 weeks	14 Mar	4.7
Predicted	21 Mar	8.9
	28 Mar	13.5

* 270 kg N/ha/year applied

Grass Quality	
Dry matter (%)	26.3
ME (MJ/kg DM)	12.4
Crude protein (%)	19.1
Sugars (% DM)	17.5

Management notes.

- Ground conditions have improved greatly in the past week, however cold temperatures continue to keep growth below average.
- With the improvement in ground conditions, every effort should now be made to get stock out grazing, if even for a few hours daily.
- Whilst the weather forecast is suggesting a return to more unsettled conditions, using back fences, alternating entry/exit points and grazing square blocks should be used as necessary to keep the herd grazing.
- Cows turned out with an edge to their appetite will easily consume 3 to 4 kg DM of grass in 3 to 4 hours, and with grass quality currently high, there is an ideal opportunity to replace silage and concentrates with grazed grass.