

**Thank you for  
invitation**



# Daan Kneppers



**Green Works**  
is a supplier of young  
planting material for the  
professional cultivation of  
pot plants and  
summer cut flowers



# Green Works assortment:

- Niche products
- Slow to propagate
- Breeders right protected  
(when possible)



**All crops from Green Works  
are grown on contract by  
longterm partners.**

**URC: Tanzania, El Salvador**

**Tissue Culture: India**

**Greenhouse: Westland NL**

**Peonies: NL, Limburg**



# Support with sales:

- **Market research**
- **Contact with exporters and trade**
- **Research in market for stable and sustainable sales**
- **Tradeshows and exhibitions**

# Promotional and marketing support:

- Professional digital fotografie (Free for customers who purchase our plants)
- Detailed growing information
- PDF with customer name and logo
- Exclusive design plant label for pots
- Exclusive design flower sleeve



# Promotional tools:

## Good presentation is your silent Sales person

Convince your customers with these impressive displays. Beautiful in the entrance of your company or in the greenhouse. It is also very suitable for fairs and tradeshows. The images are printed on weather resistant canvas which is tied up within a black iron frame.

Available displays are free-standing, or hanging, for the following products;



Witte Paal 341  
1742 LE Schagen  
The Netherlands  
T: +31(0)224 590 173  
F: +31(0)224 590 925  
info@green-works.nl  
www.green-works.nl

## Striking labels

Original en striking labels are improving sales. Green Works can deliver, along with the ordered products, unique labels. New are the 'tear shaped' labels which can be used as insert- or hanging labels. All new labels are equipped with a QR code which refers to the consumer website [www.moreplant.info](http://www.moreplant.info). This offers more information to consumers, with a smartphone, and to connect online and offline promotion/advertise opportunities.



Witte Paal 341  
1742 LE Schagen  
The Netherlands  
T: +31(0)224 590 173  
F: +31(0)224 590 925  
info@green-works.nl  
www.green-works.nl

# Green Works products;







'L'Amour d'été Blanc'



'L'Amour d'été Blanc'



'L'Amour d'été Bleu'



Continue flowering



**Green Works**  
Breeding & Young Plants

Witte Paal 341  
1742 LE Schagen  
The Netherlands  
T: +31(0)224 590 173  
F: +31(0)224 590 925  
info@green-works.nl  
www.green-works.nl

### Agapanthus

# L'Amour d'été

Early flowering  
Compact strong stem  
Continue flowering through the summer  
Guaranteed flowering

Vroeg bloeiend  
Korte stevige steel  
Hele zomer doorbloeiend  
Bloeit garantie

Breeders right protected variety

Keukerrechtelijk beschermd ras



'Pretty Lady Diana'



'Pretty Lady Emily'



'Pretty Lady Julia'



Compact



**Green Works**  
Breeding & Young Plants

Witte Paal 341  
1742 LE Schagen  
The Netherlands  
T: +31(0)224 590 173  
F: +31(0)224 590 925  
info@green-works.nl  
www.green-works.nl

'Pretty Lady Susan'

### Anemone

# Pretty Lady™

Very compact  
Long blooming  
Winterhardy  
Blooming june-october

Breeders right protected variety

Zeer compact  
Rijk bloeiend  
Winterhard  
Bloeit juni-oktober

Keukerrechtelijk beschermd ras





XXL Fancy Eye\*



XXL Fancy Red\*



XXL Fancy Blush\*



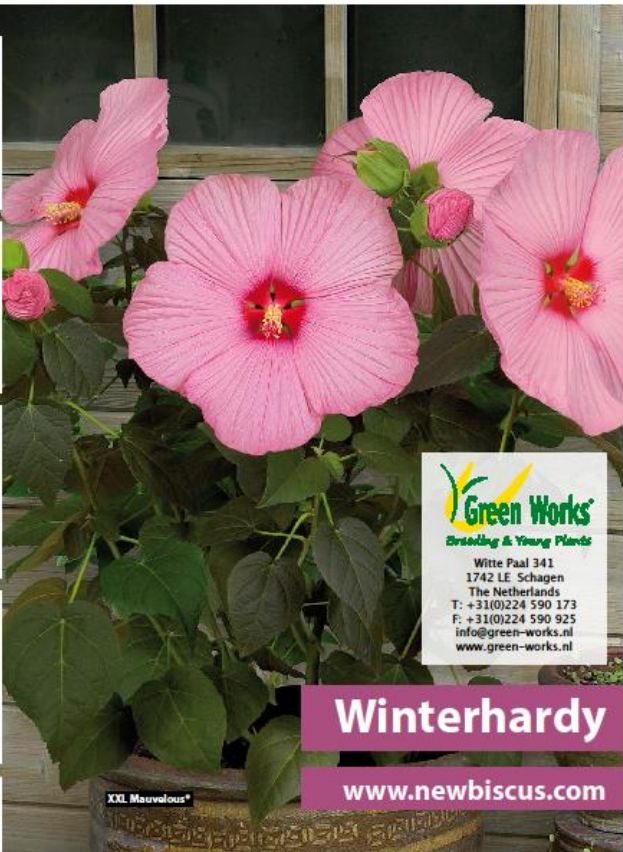
XXL Fancy Sparkler\*



XXL Blue Jacket\*



XXL Twist & Swirl\*



**Green Works**  
 Breeding & Young Plants  
 Witte Paal 341  
 1742 LE Schagen  
 The Netherlands  
 T: +31(0)224 590 173  
 F: +31(0)224 590 925  
 info@green-works.nl  
 www.green-works.nl

**Winterhardy**

[www.newbiscus.com](http://www.newbiscus.com)

**XXL Flowers**

**Newbiscus**®

Very large Flowers  
 Fast Grower  
 Winterhardy  
 For pot, patio and garden

Zeer grote bloemen  
 Snelle groeier  
 Winterhard  
 Voor pot, patio en tuin

Breeders right protected variety

Kweekrechtelijk beschermde ras







'Versuz'



'Durango'



'Mayo'



'Banito'



'Chapas'



'Taxco'



Witte Paal 341  
1742 LE Schagen  
The Netherlands  
T: +31(0)224 590 173  
F: +31(0)224 590 925  
info@green-works.nl  
www.green-works.nl

Large flowers  
Grootbloemig

Collection

# Dahlia XXL Aztec™

Nonstop blooming  
Large full double flowers  
Same bloom type  
New assortment

Breeders right protected varieties

Doorbloeiend  
Grote volle dubbele bloemen  
Gelijke bloemtypen  
Uniek assortiment

Kwekersrechtelijk beschermde rassen



XXXL Grand™ Central



XXXL Grand™ Marc



XXXL Grand™ Sonata



XXXL Grand™ Warrior



Very large  
flower



Witte Paal 341  
1742 LE Schagen  
The Netherlands  
T: +31(0)224 590 173  
F: +31(0)224 590 925  
info@green-works.nl  
www.green-works.nl

Collection

# Dahlia XXXL Grand™

Huge flowers  
Compact  
Non-stop blooming  
For outside growing

Breeders right protected varieties

Super grote bloem  
Compact  
Doorbloeiend  
Geschikt voor buiten teelt

Kwekersrechtelijk beschermde rassen





**Green Works**  
 Breeding & Young Plants

Witte Paal 341  
 1742 LE Schagen  
 The Netherlands  
 T: +31(0)224 590 173  
 F: +31(0)224 590 925  
 info@green-works.nl  
 www.green-works.nl

# CannaSol™

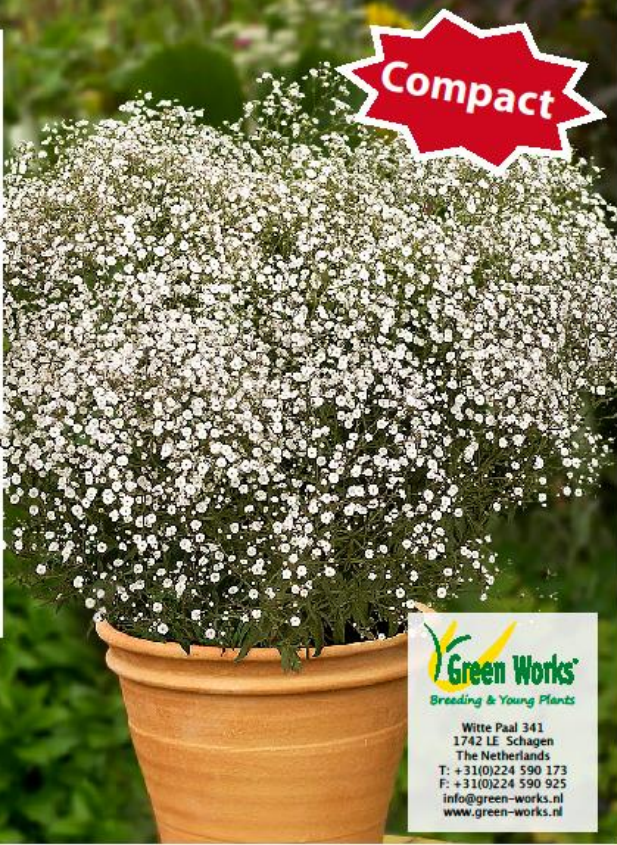
<b>Compact</b>	<b>Compact</b>
<b>Long blooming time</b>	<b>Lange bloeitijd</b>
<b>Large color range</b>	<b>Veel kleur variaties</b>
<b>Virus free / from tissue culture</b>	<b>Virus vrij / van weefselkweek</b>

Broeders right protected variety

Broedersrechtelijk beschermd ras







**Compact**

**Green Works**  
Breeding & Young Plants

Witte Paal 341  
1742 LE Schagen  
The Netherlands  
T: +31(0)224 590 173  
F: +31(0)224 590 925  
info@green-works.nl  
www.green-works.nl

**Gypsophila**

# Summer Sparkles®

**Very compact**  
Winterhard  
Excellent patio plant

**Zeer compact**  
Winterhard  
Uitstekende terras plant

Breeders right protected variety

Kweekrechtelijk beschermd ras



**XXL Flowers**

**Green Works**  
Breeding & Young Plants

Witte Paal 341  
1742 LE Schagen  
The Netherlands  
T: +31(0)224 590 173  
F: +31(0)224 590 925  
info@green-works.nl  
www.green-works.nl

**Ranunculus**

# Success® XXL™

**Very large flowering**  
Long blooming time  
Many flower stems  
From tissue culture

**Zeer groot bloemig**  
Lange bloeiperiode  
Veel bloemstelen  
Van weefselkweek





"West Country Desert Sun"



"West Country Blossom"



"West Country Persian Slipper"



"West Country Salmon Star"



"West Country Toquilla Flame"



**Green Works**  
*Breeding & Young Plants*  
 Witte Paal 341  
 1742 LE Schagen  
 The Netherlands  
 T: +31(0)224 590 173  
 F: +31(0)224 590 925  
 info@green-works.nl  
 www.green-works.nl

## West Country Lupins

# Lupine

Good growers  
 Strong stems  
 Complete assortment  
 Not sensitive for  
 Colletotrichum

Breeders right protected varieties

Goede groeiers  
 Stevige stelen  
 Compleet assortiment  
 Niet gevoelig voor  
 Colletotrichum

Breedersrechtelijk beschermde rassen





Witte Paal 341  
1742 LE Schagen  
The Netherlands  
T: +31(0)224 590 173  
F: +31(0)224 590 925  
info@green-works.nl  
www.green-works.nl

Echinacea purp.

# Little Magnus<sup>®</sup>

Very compact  
Winterhardy  
Large flowers  
Long blooming

Breeders right protected variety

Zeer compact  
Winterhard  
Grote bloemen  
Rijk bloeiend

Kweekrechtelijk beschermd ras



Sunacea™ Archas



Now



Now



Now



Compact  
growing



Witte Paal 341  
1742 LE Schagen  
The Netherlands  
T: +31(0)224 590 173  
F: +31(0)224 590 925  
info@green-works.nl  
www.green-works.nl

Sunacea™ Zion

Echinacea

# Sunacea<sup>™</sup>

Self branching  
Unique colors  
Winterhardy  
Long blooming

Breeders right protected variety

Goed uitstoelend  
Nieke kleuren  
Winterhard  
Rijk bloeiend

Kweekrechtelijk beschermd ras





**Compact  
growing**



**Breeding & Young Plants**

Witte Paal 341  
1742 LE Schagen  
The Netherlands  
T: +31(0)224 590 173  
F: +31(0)224 590 925  
info@green-works.nl  
www.green-works.nl

**Prince**  
COLLECTION  
Helleborus

**Helleborus**

# Prince Collection

Compact growing  
Winterhardy  
Produces many flowers  
Suitable for smaller potsize

Compacte groei  
Winterhard  
Rijkbloelend  
Geschikt voor kleinere potmaat



**Large  
Flowers**



**Breeding & Young Plants**

Witte Paal 341  
1742 LE Schagen  
The Netherlands  
T: +31(0)224 590 173  
F: +31(0)224 590 925  
info@green-works.nl  
www.green-works.nl

**King**  
COLLECTION  
Helleborus

**Helleborus**

# King Collection™

Large flowers  
Winter hardy  
Thick flowerstems  
Produces many flowers  
Excellent for patio and garden plant

Zeer grote bloemen  
Winterhard  
Dikke bloemstelen  
Veel bloemen  
Ideaal voor patio en als tuinplant





  
Breeding & Young Plants  
Witte Paal 341  
1742 LE Schagen  
The Netherlands  
T: +31(0)224 590 173  
F: +31(0)224 590 925  
info@green-works.nl  
www.green-works.nl

Asclepias

**Beatrix<sup>®</sup>**

- Exclusive cut flower
- For single and mixed bouquet
- Beautiful orange flower
- Exclusieve snijbloem
- Voor mono en gemengde boeket
- Prachtige oranje bloem

Breeders right protected variety

Kweekersrechtelijk beschermd ras







**Green Works**  
Breeding & Young Plants  
Witte Paal 341  
1742 LE Schagen  
The Netherlands  
T: +31(0)224 590 173  
F: +31(0)224 590 925  
info@green-works.nl  
www.green-works.nl

**Queens**  
COLLECTION  
Helleborus

**Cut flower**

**Snijbloem**

**Helleborus Queens™**

Long stems up to 55 cm  
Thick flowerstems  
Large flowers  
Bright colours (no speckles)  
High flower production

Lange stelen tot 55 cm  
Dikke bloemstelen  
Grote bloemen  
Heldere kleuren (geen spikkels)  
Hoge bloem productie





# Peony :

## King of all flowers



# Helleborus Queens

- Thick stems
- Large clear flowers
- High flower production
- Plant once, cut flowers for a long time
- Good vase life
- Cold greenhouse crop



# Helleborus Queens







































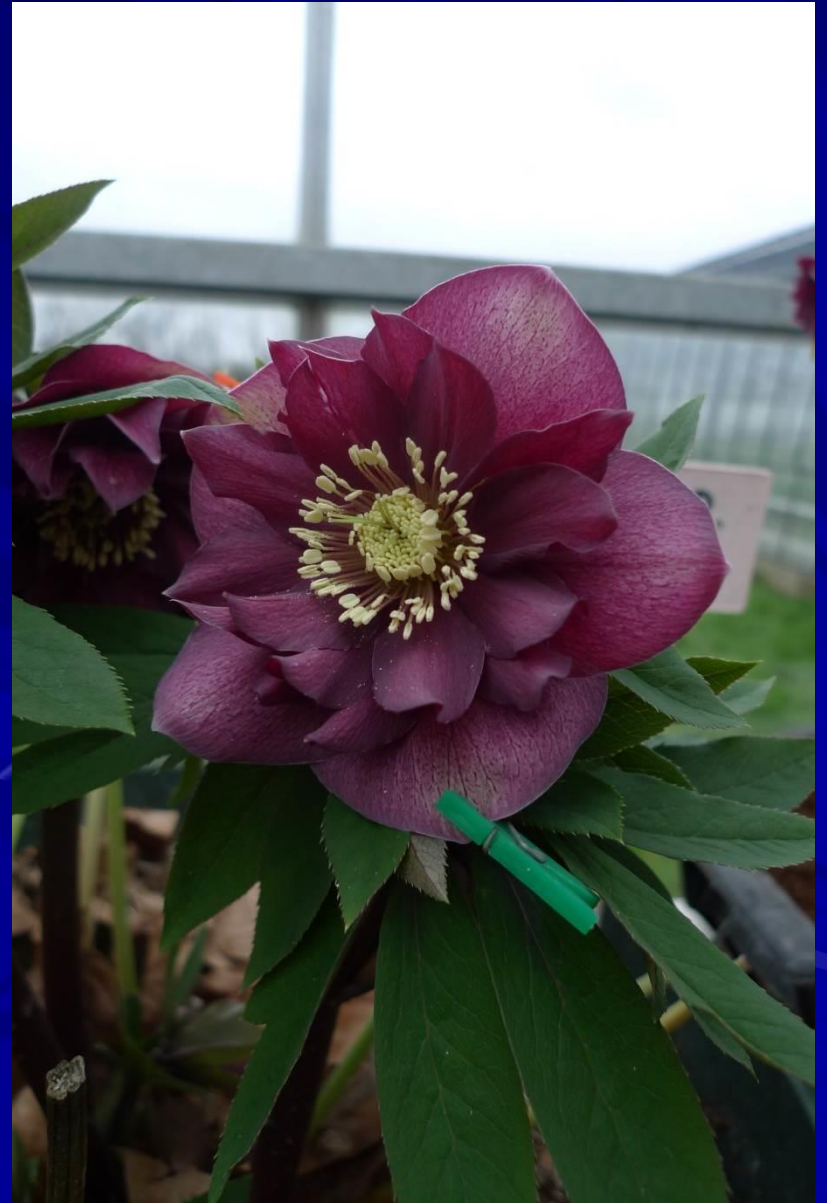












# Helleborus Queens viselife research

















# Helleborus Queens winter flower with a future





# Green Works Peonies





# Each year an extended catalog with professional pictures and description

**2014 / 2015**

*Debutante de Nemours*

*Top Hat*

*Patio Peony Roma*

*Bob Trainor Charm*

*Angal Chequer*

**Assortment  
Paeonia**

**New and large  
assortment**

**Nieuw en groot  
assortiment**

**Green Works**  
Breeding & Young Plants

Witte Paal 341  
1742 LE Schagen  
The Netherlands  
T: +31(0)224 590 173  
F: +31(0)224 590 525  
info@green-works.nl  
www.green-works.nl

**Paeonia itho Bartzella (1986)**

Bloei tijd: Mid.  
Hoogte: 80 - 90 cm  
Bloem type: Half gevuld tot dubbel  
Kleur: Geel met rode vlam  
Klasse: Itoh of intersectional

Vol dubbel gele bloemen met rode vlammen naar het hart. Stevige stelen met de bloem boven het blad uit. Volwassen plant heeft meer dan 50 bloemen.

Gouden medaille winnaar  
Grand Champion

**Paeonia itho Callie's Memory (1999)**

Bloei tijd: Mid.  
Hoogte: 80 - 90 cm  
Bloem type: Half gevuld tot dubbel  
Kleur: Geel - crème, picotee rand  
Klasse: Itoh of intersectional

De crème gele bloemen zijn naar het hart van de bloem donker rood gevamd, naar de rand van de bloem is er ook weer een vleugje rood te bekennen. Maakt voldoende lange stelen voor de snij.

**Paeonia itho Cora Louise (1986)**

Bloei tijd: Mid.  
Hoogte: 80 - 80 cm  
Bloem type: Half gevuld tot dubbel  
Kleur: Wit met paarse vlam  
Klasse: Itoh of intersectional

Witte bloem met een paarse vlam bij het hart. Bloemen zijn licht geurend en half gevuld tot dubbel. Bloemen komen goed boven blad uit. Unieke cultivar.

**Paeonia itho Garden Treasure (1984)**

Bloei tijd: Mid  
Hoogte: 80 - 90 cm  
Bloem type: Half dubbel  
Kleur: Goud geel met rood hart  
Klasse: Itoh of intersectional

Dit is een Intersectional of Itoh pioen. Deze prachtige planten zijn de ultieme tuinpioen, bloeien voor een periode van 4 - 5 weken. Dit soort opent met goud gele bloemen, die later wat lichter van kleur worden.

Gouden medaille winnaar  
Grand Champion



# Green Works support;

- **Nieuwsletter via e-mail 4-5 x per year**
- **Personal visits (in NL)**
- **Professional advise via e-mail**
- **Flowers for shows**
- **Assortment & growing advise**



# Green Works Peonies;

- 2 year crop
- Grown on sandy soil
- Young healthy roots
- Thru to variety
- No mixed in varieties
- Free of perennial weeds
- Good size roots



# Peonies are longterm valuable crop.

- Slow to propagate
- Stable prices for flowers
- Seasonal flower
- Always rest value of plants  
inground



# Only a good product with good people















We grow all our Peonies in Limburg  
(southern part of Holland)

























**Different soil types have  
different requirements;**



# Peonies on sandy soil





# Peonies on clay soil





**Peony cut flowers are  
produced worldwide in areas  
with enough cold;**

**Israël**

**Italy**

**France**

**Netherlands**

**Chili**

**New Zealand**

**Ireland??**



**To extend flowering season of  
Peonies they are produced in;**

**Greenhouse**

**Plastic tunnel**

**Outside**

**Storing in cooler**



# Peonies in greenhouse heated or cold





# Peonies in plastic tunnel





# Peonies outside production





# Sarah Bernhardt cut in right stage





# 1st preparation:

- **Soil sample**
- **Very good water management**
- **Free of perennial weeds**
- **Good soil structure**
- **Prior crop, because of nematodes**
- **Timely spraying of field (round-up)**
- **Visit other growers or auction to get familiar with crop and market**



**Make your own assortment  
of Peonies to plant based on  
your own circumstances.**



# 2nd preparation:

- Plant in the fall
- Decide on planting distance
- Keep in mind future planning maybe plastic tunnel
- Make planting overview / plan
- Keep in mind rows for tractor for spraying (length of spray beam)
- Keep in mind how to take cutflowers from field
- Plant roots eye straight up



## 2nd preparation cont.:

- Give warm water treatment to roots and cooling down
- After planting make sure soil closed nicely (no large blocks of soil)
- Spend enough time planting, you only plant once
- Plant deep enough
- Make sure there is proper drainage (especially in winter)



# Disease and growing problems in Peonies;

# Herbicide damage





# Botrytis paioniae



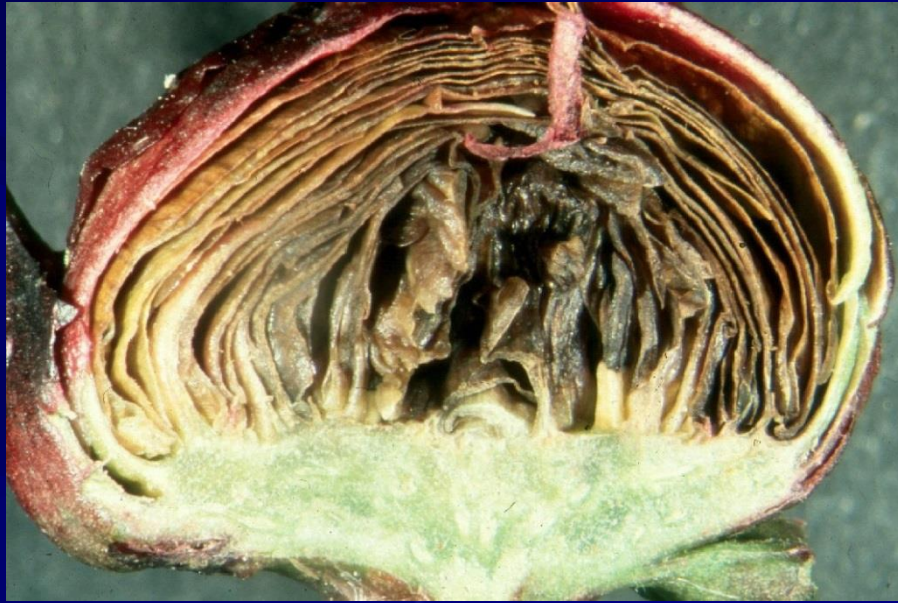


# Apply with Collis





Leaf nematode



Botrytis





# Botrytis





# Leaf nematode



# Virus in Peony





left: Botrytis, right Cladosporium





# Remove all old foliage in fall





**Most important is to have no weeds (summer and winter) and work clean.**

**Than you will have least amount of problems**

# Where do Peony roots come from?

China

USA

Netherlands



# Peonies from China;

- **Relative small flower**
- **Very long weak stems**
- **Problems with true to variety**
- **Historically used for medicine (roots)**

# Peonies from China







**Peonies from USA are  
mostly small quantity and  
newer varieties.**



# Peonies from Netherlands

- Large quantity
- Wide assortment
- Reasonable price
- Good quality
- Many suppliers

# What to watch out for when you purchase Peonies;

- Good quality roots
- Plants from young stock, more growing power
- Free of perennial weeds
- Visual free from virus
- Free of nematode
- Not from cut flower grower



# Green Works Peonies;

- 2 year crop
- Grown on sandy soil
- Young healthy roots
- Thru to variety
- No mixed in varieties
- Free of perennial weeds
- Good size roots

# Green Works Peony selection in field





**Plant Peonies based on  
assortment and use.**

**Not every variety is suitable  
for every use.**

# Itoh Peonies



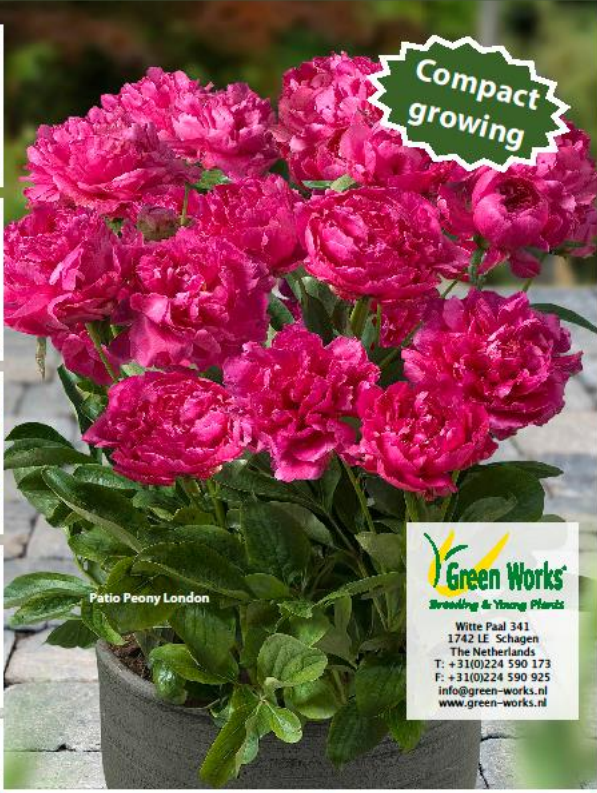


# Itoh Peony

## (Intersectional peony)

- Excellent Peony for the garden
- Less suitable for cutflower, shorter vase life
- Above ground as Tree Peony
- Under ground as lactiflora Peony

# Patio Peony



Compact growing

Patio Peony Athens

Patio Peony Dublin

Patio Peony Kiev

Patio Peony London

Patio Peony Madrid

Patio Peony Oslo

Patio Peony Roma

**Green Works**  
Breeding & Young Plants

Witte Paal 341  
1742 LE Schagen  
The Netherlands  
T: +31(0)224 590 173  
F: +31(0)224 590 925  
Info@green-works.nl  
www.green-works.nl

Assortment  
**Patio Peony™**

- Compact growing
- Special assortment
- Selected for container growing
- Compact
- Speciaal assortiment
- Geselecteerd voor de teelt in pot





# Single flowering Peonies





# Anemone flowering Peonies





# Double flowering Peonies





# Double flowering Peonies





# Bom shaped Peonies





# Removing of sidebuds?





# Peony Sarah Bernhardt too tight





# Right cutting stage is essential for good market





# Flower trials



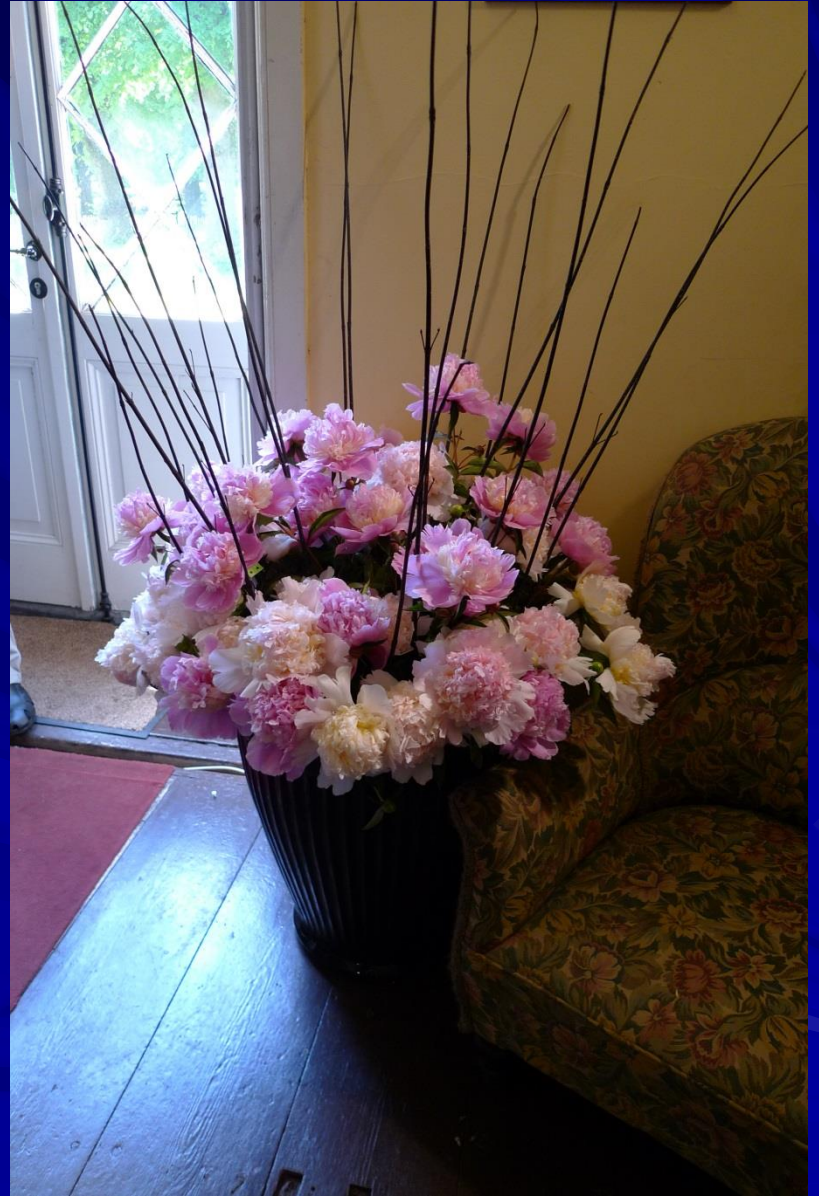


# Green Works flower shows





**Peony is a beautiful flower  
with lots of potential  
BUT  
it is essential that growers  
produce flowers in right  
flower stage to continue the  
succes of the Peony with the  
consumer.**





























**Thank you for your attention**

for more information see:

[www.green-works.nl](http://www.green-works.nl)

