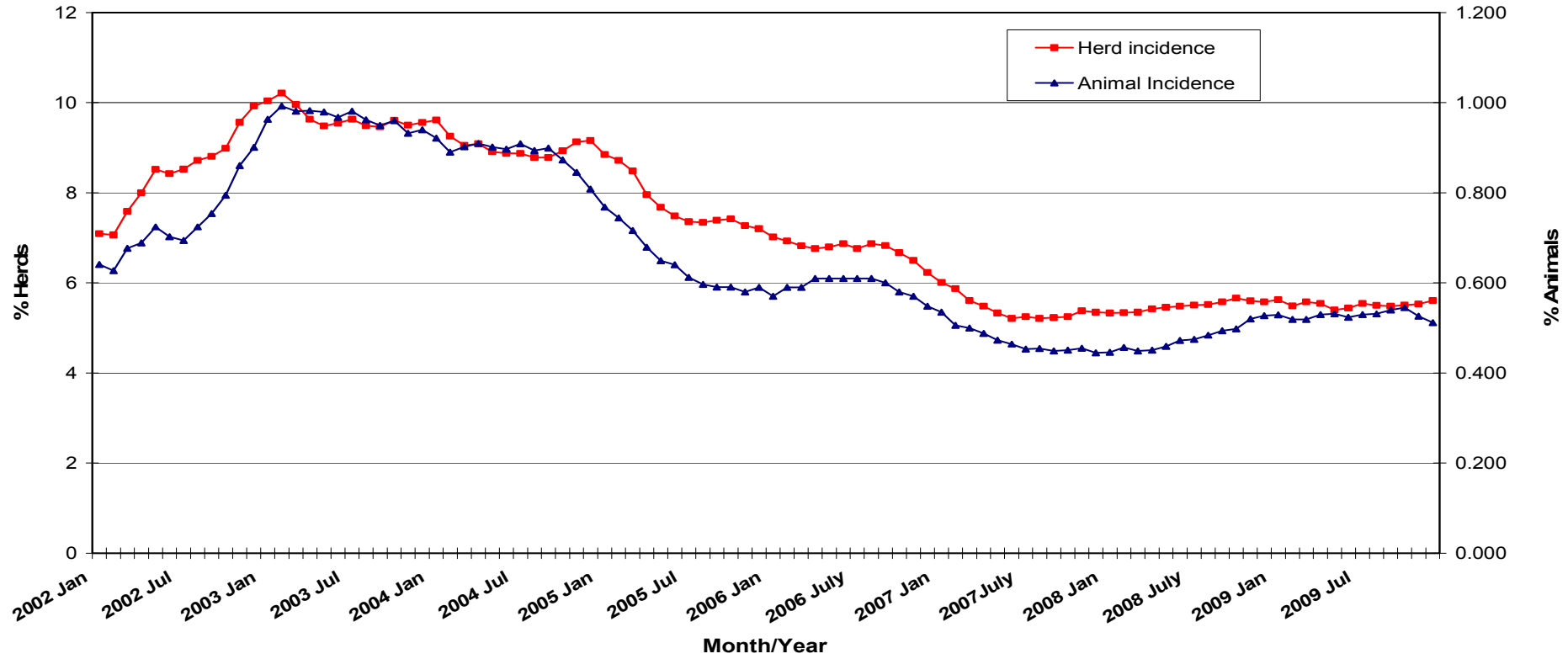
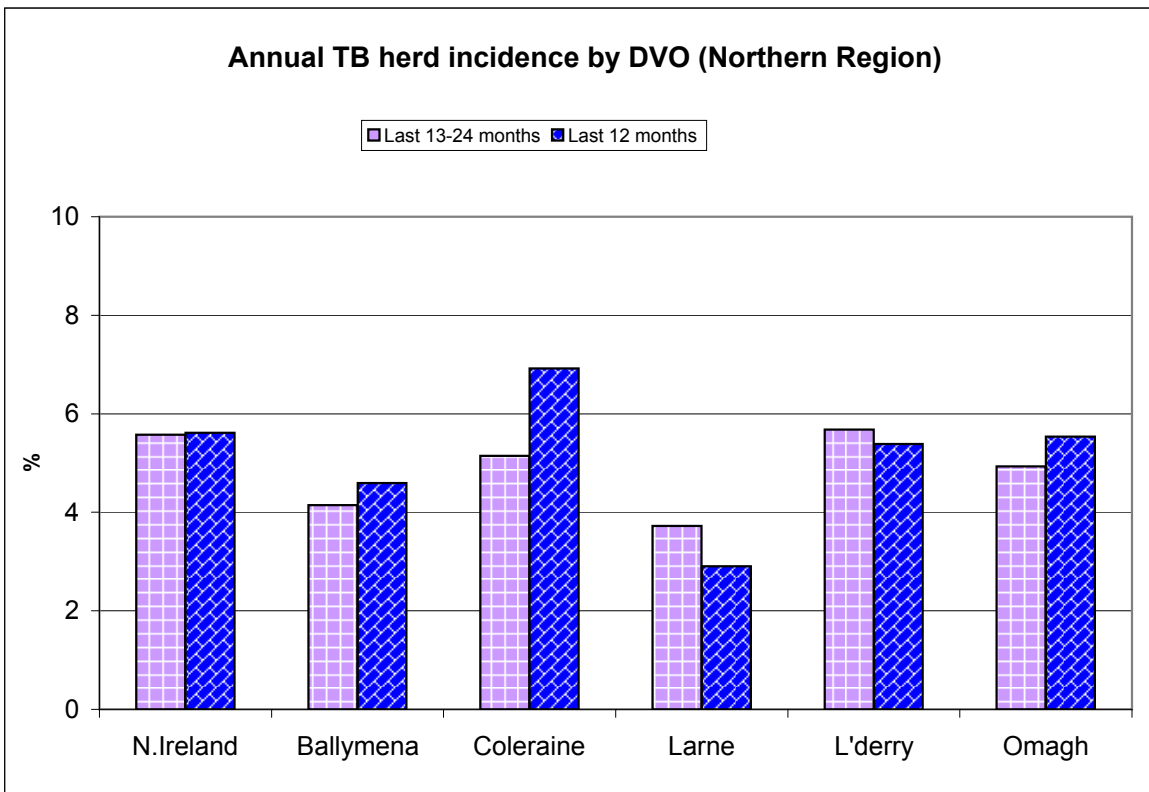
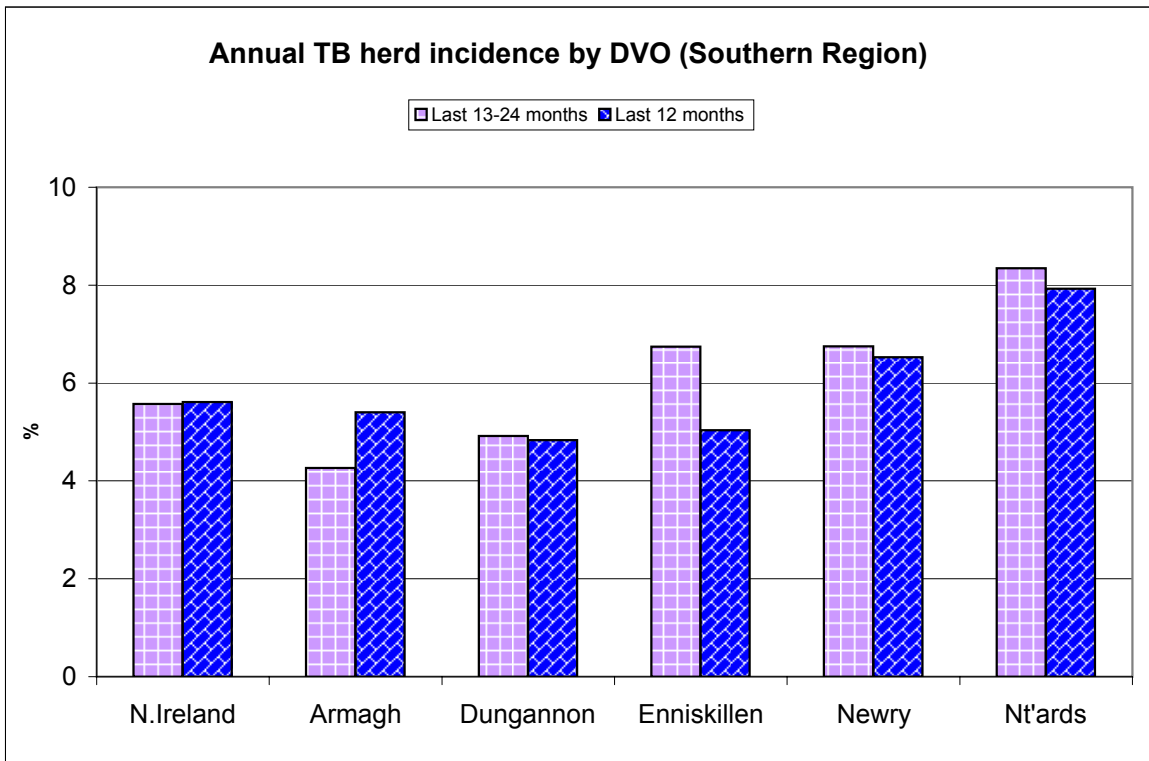


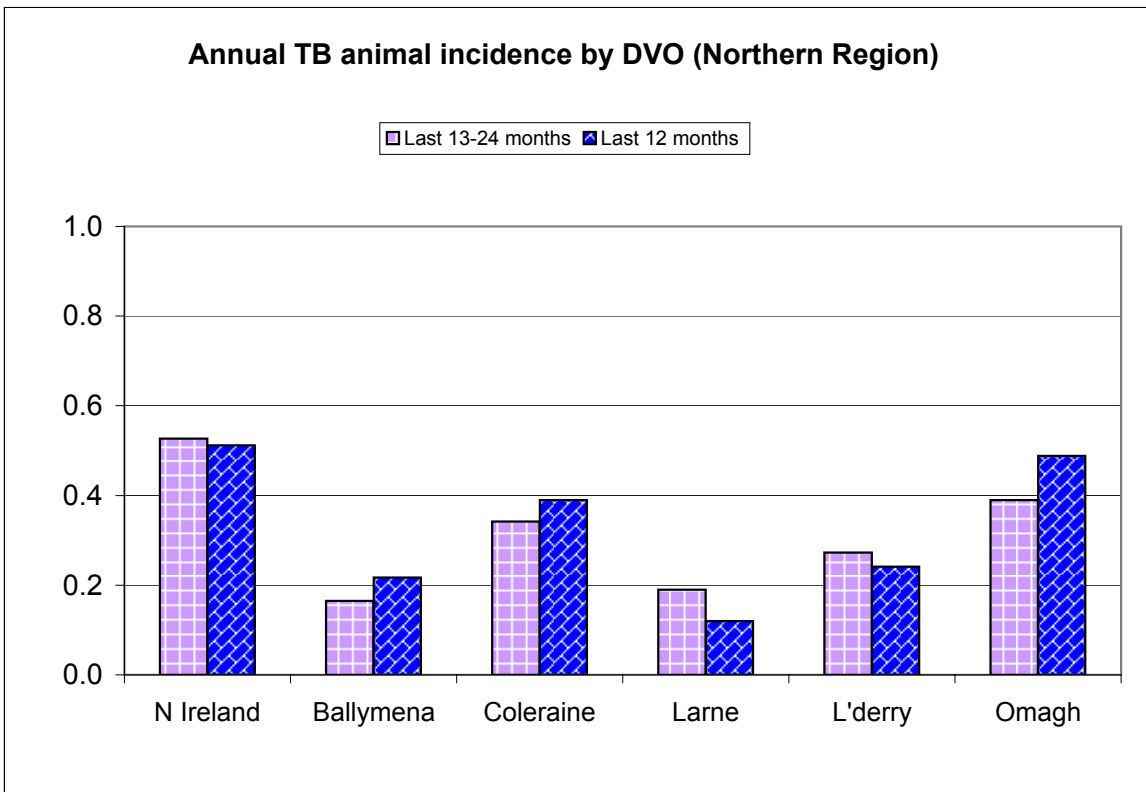
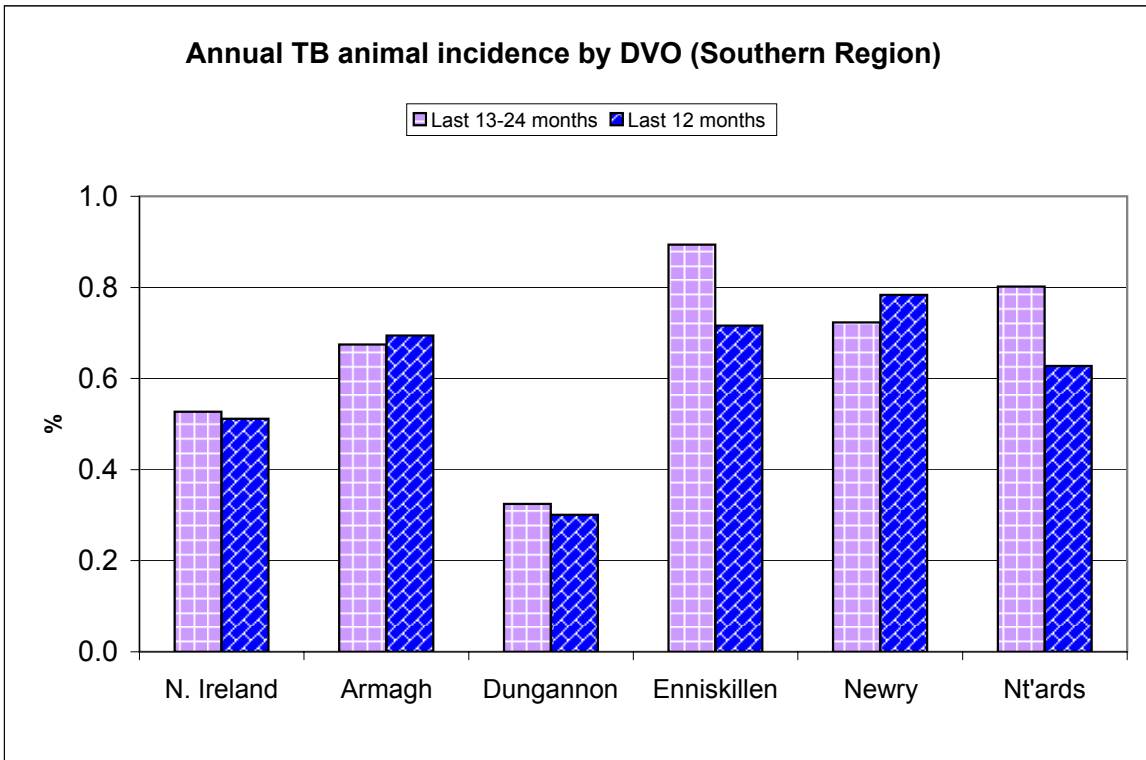
Tuberculosis: Statistics for December 2009

Tests Completed	Herds	Number of herds tested (any test), by DVO	Cumulative Statistics	
		Number of herds with herd-level test, by DVO	Cumulative Statistics	
		Number of herds with any risk test, by DVO		
		Number of herds with herd-level risk test, by DVO		
		Number of herds with herd-level restricted test, by DVO		
	Animals	Total number of tests performed, by DVO	Cumulative Statistics	
		Total number of animals tests, by DVO	Cumulative Statistics	
		Total number of restricted herd tests, by DVO	Number of animals tested	
		Total number of herd tests, by DVO	Number of animals tested	
		Total number of individual tests, by DVO	Number of animals tested	
Total number of animals tested, by DVO				
Summary Statistics	Herds with TB reactors during month, by DVO	Cumulative Statistics	APT	
	Number of new reactor herds, by DVO	Cumulative Statistics	Negative-in-contacts	
	Number of new reactor animals, by DVO		Reactor removal times	
	Herd Prevalance			
	Herd Incidence			
	Animal Incidence			
	Number of reactor animals by month and by DVO			
	Number of new reactor herds by month and by DVO			
	Total number of all reactor herds by DVO			
Summary Charts	Current Animal Incidence Chart	Monthly TB reactors chart	Yearly Confirmed Herd Prevalence	
	Yearly Animal Incidence Chart	New TB reactor herds	Current Confirmed Herd Prevalence	
	Current Herd Incidence Chart	TB Herd & Animal Incidence		
	Yearly Herd Incidence Chart			

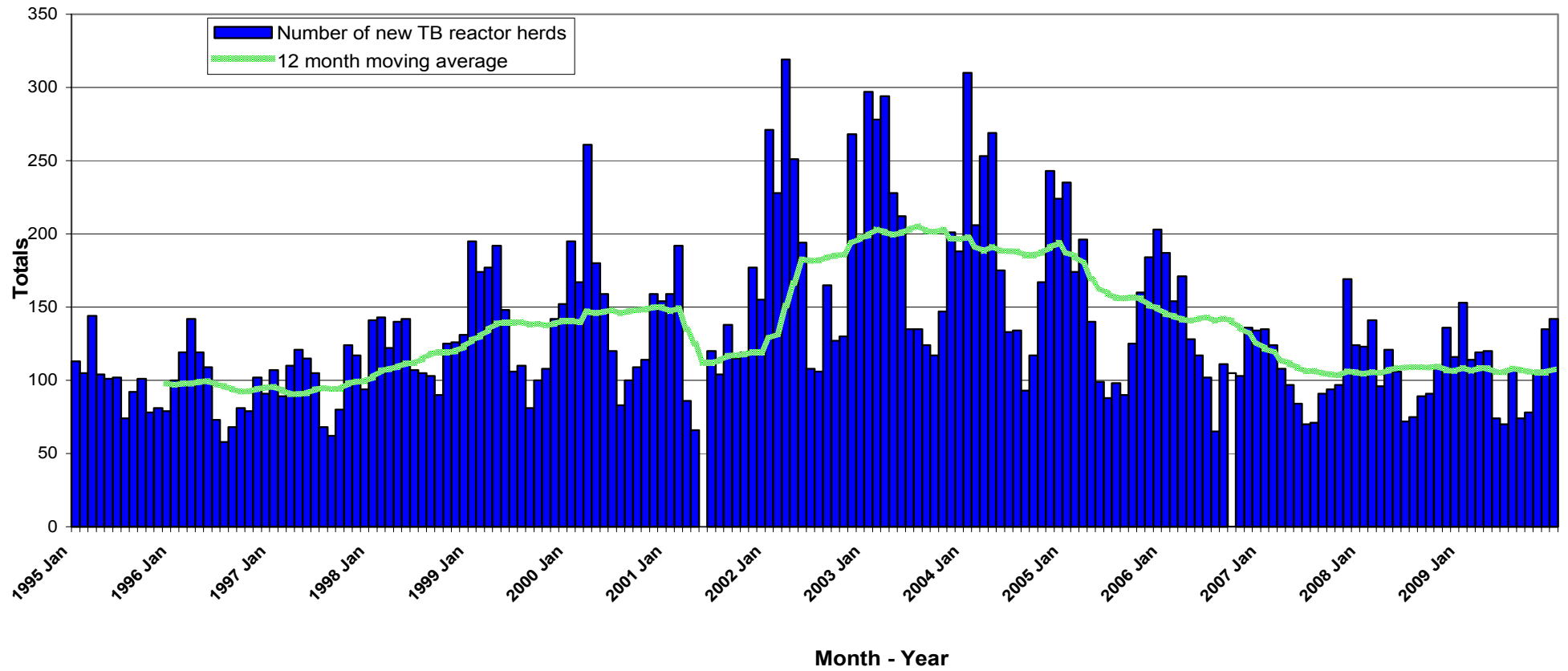
**TB Herd and Animal Incidence:
(12 month moving average: January 2002 to December 2009)**



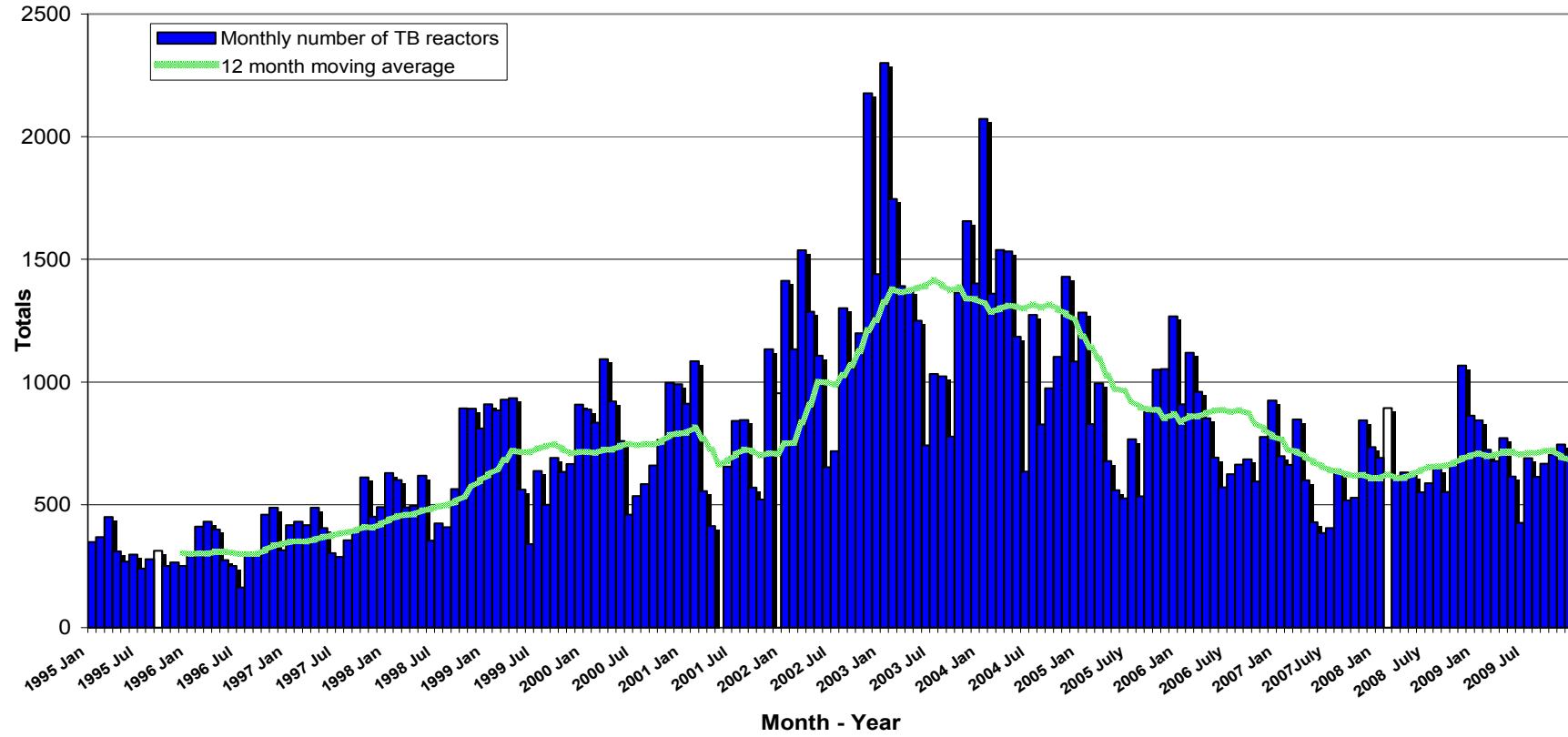


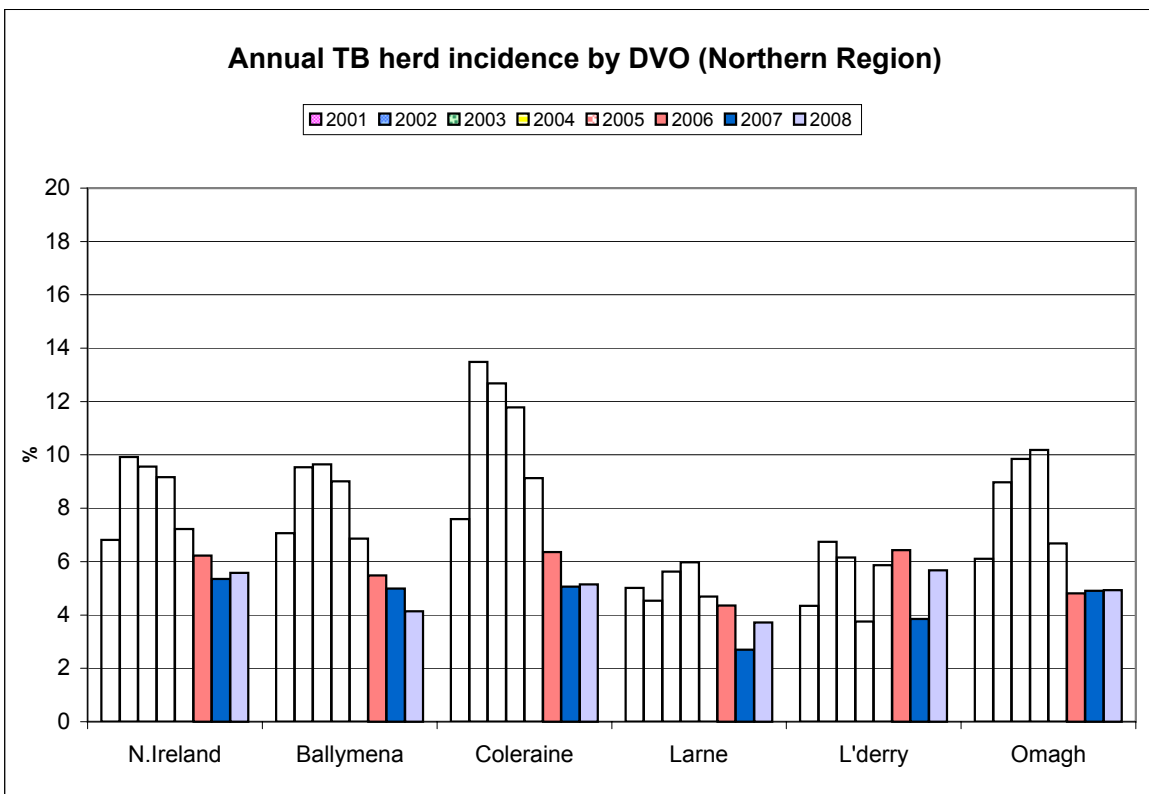
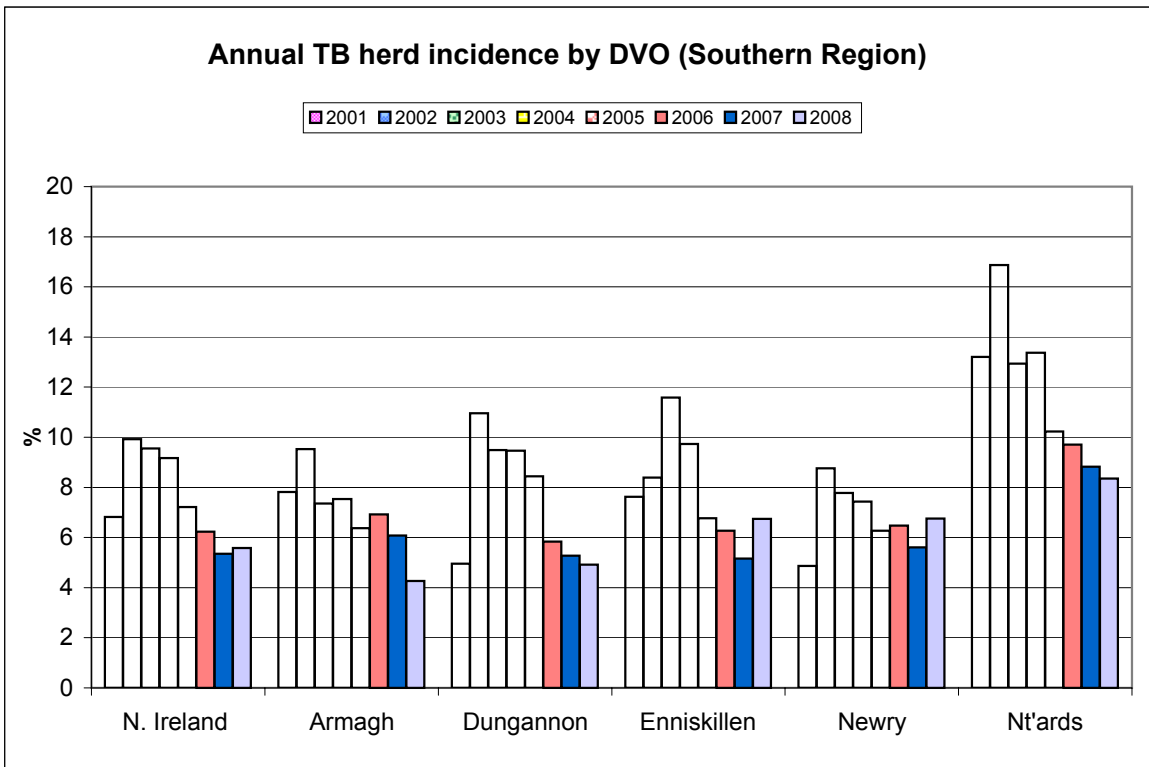


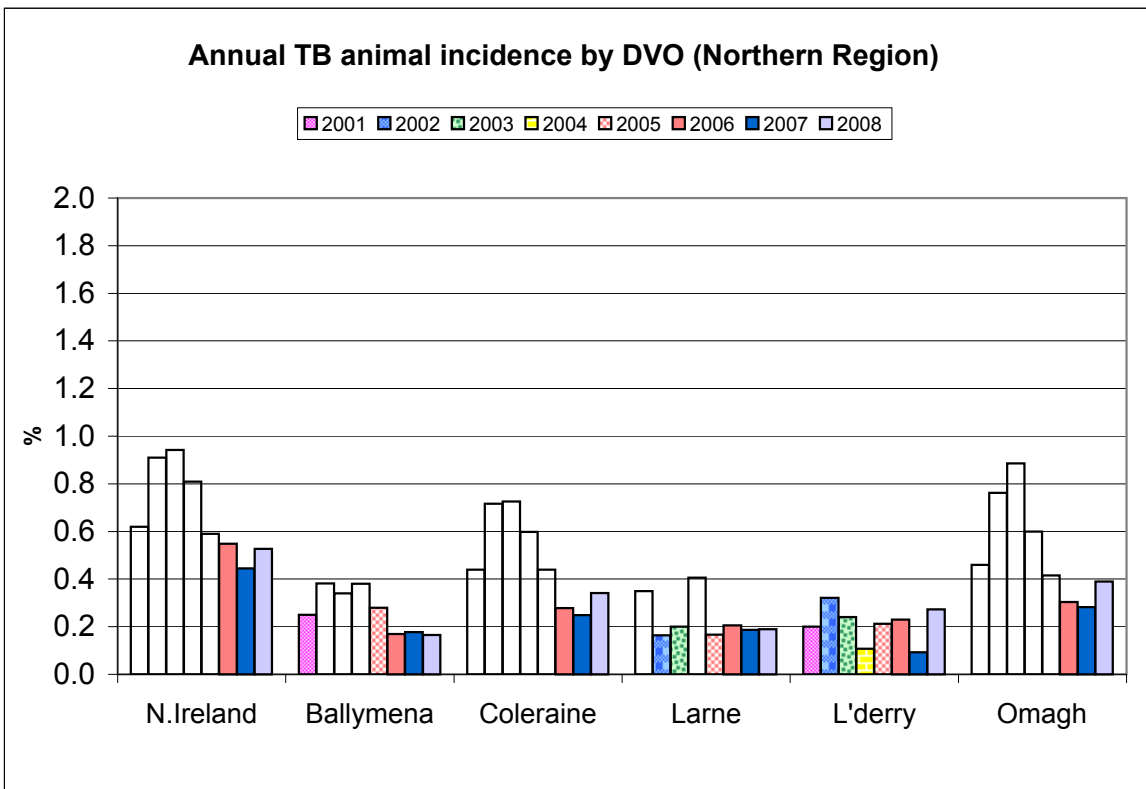
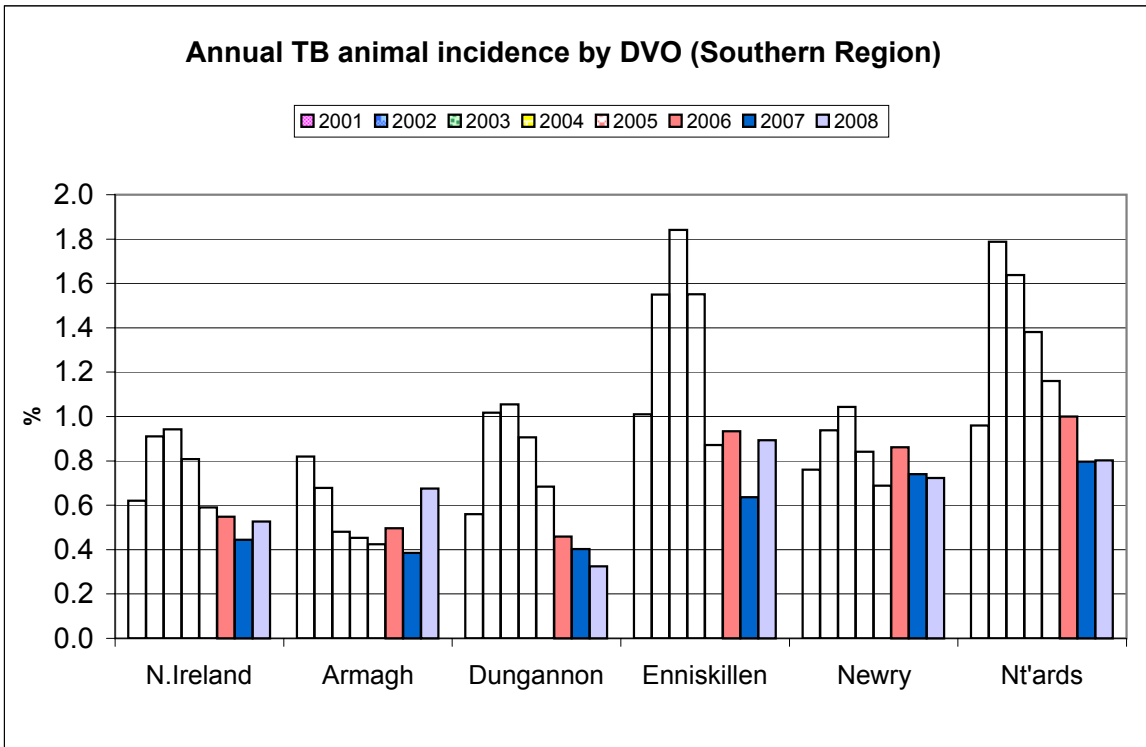
New TB Reactor Herds: January 1995 to December 2009

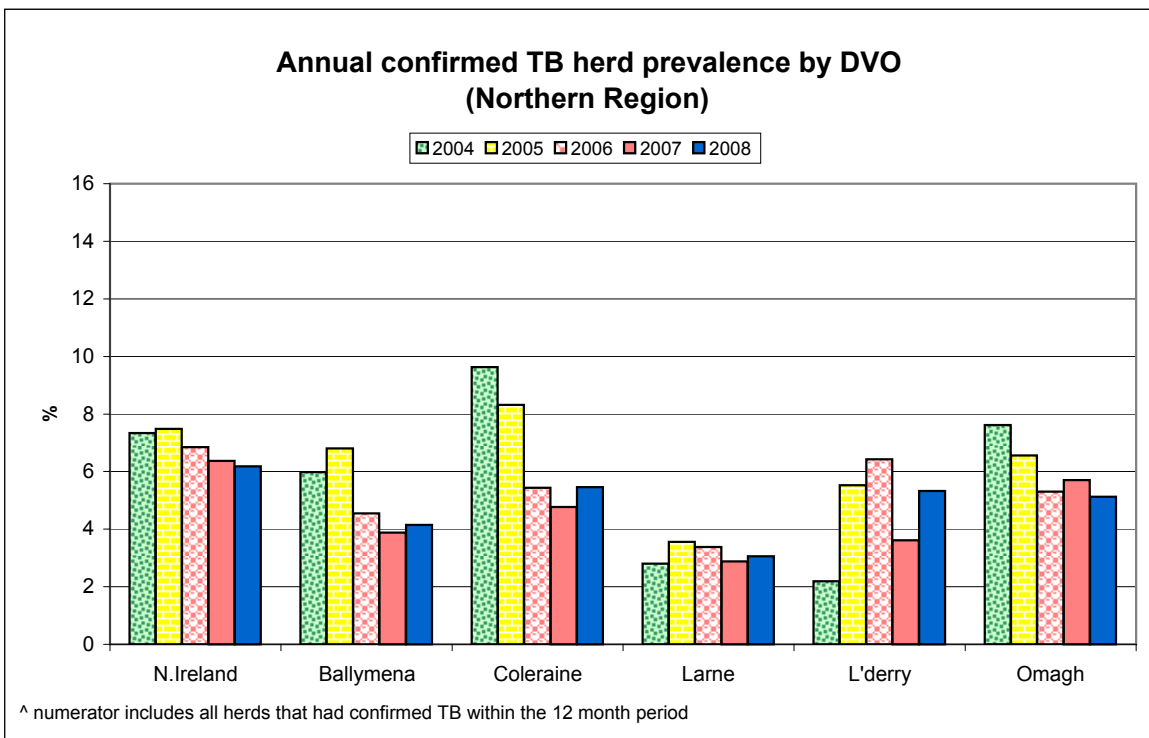
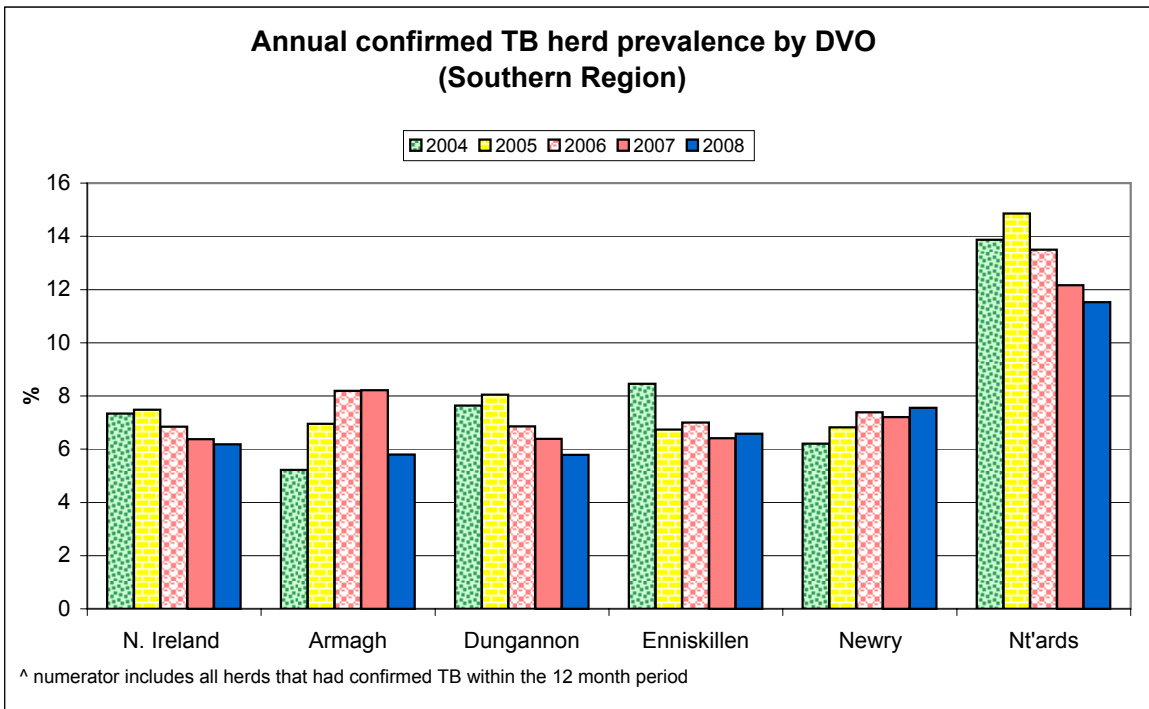


TB Reactors: January 1995 to December 2009

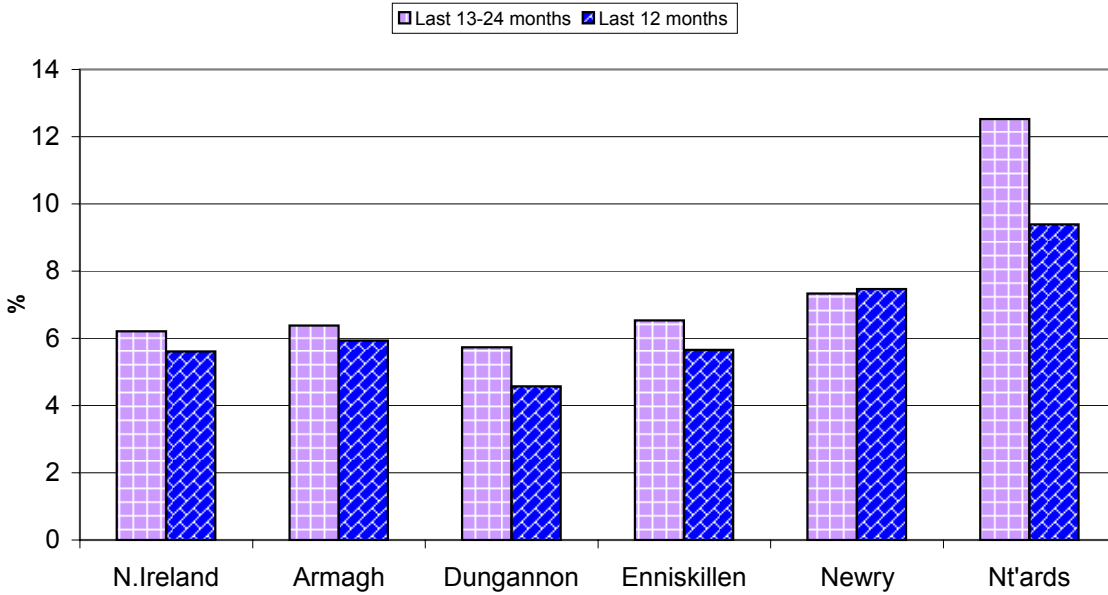






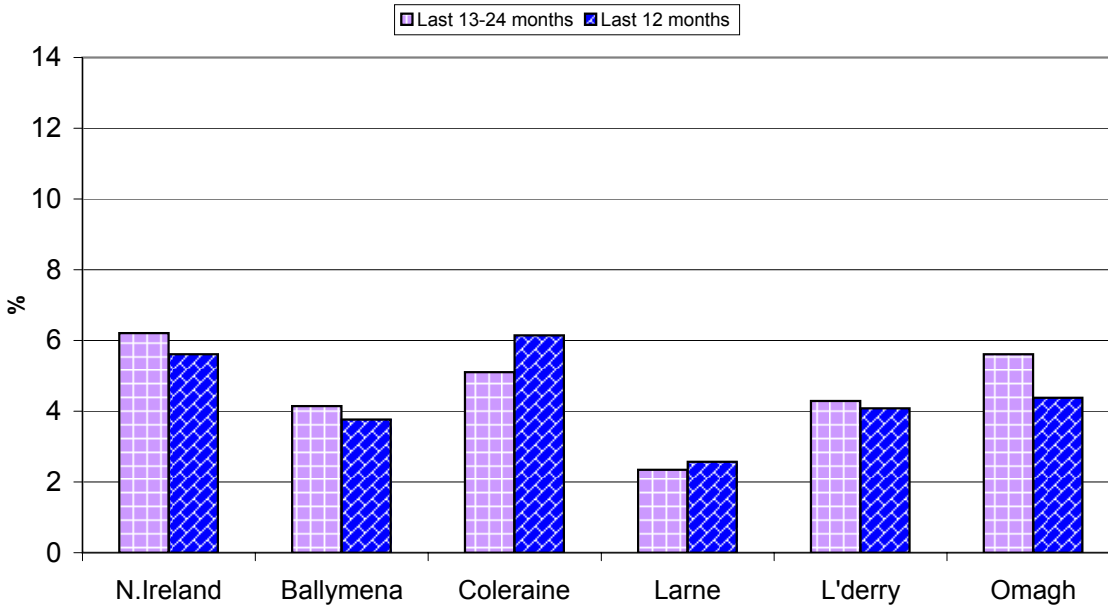


Annual confirmed TB herd prevalence^ by DVO (Southern Region)



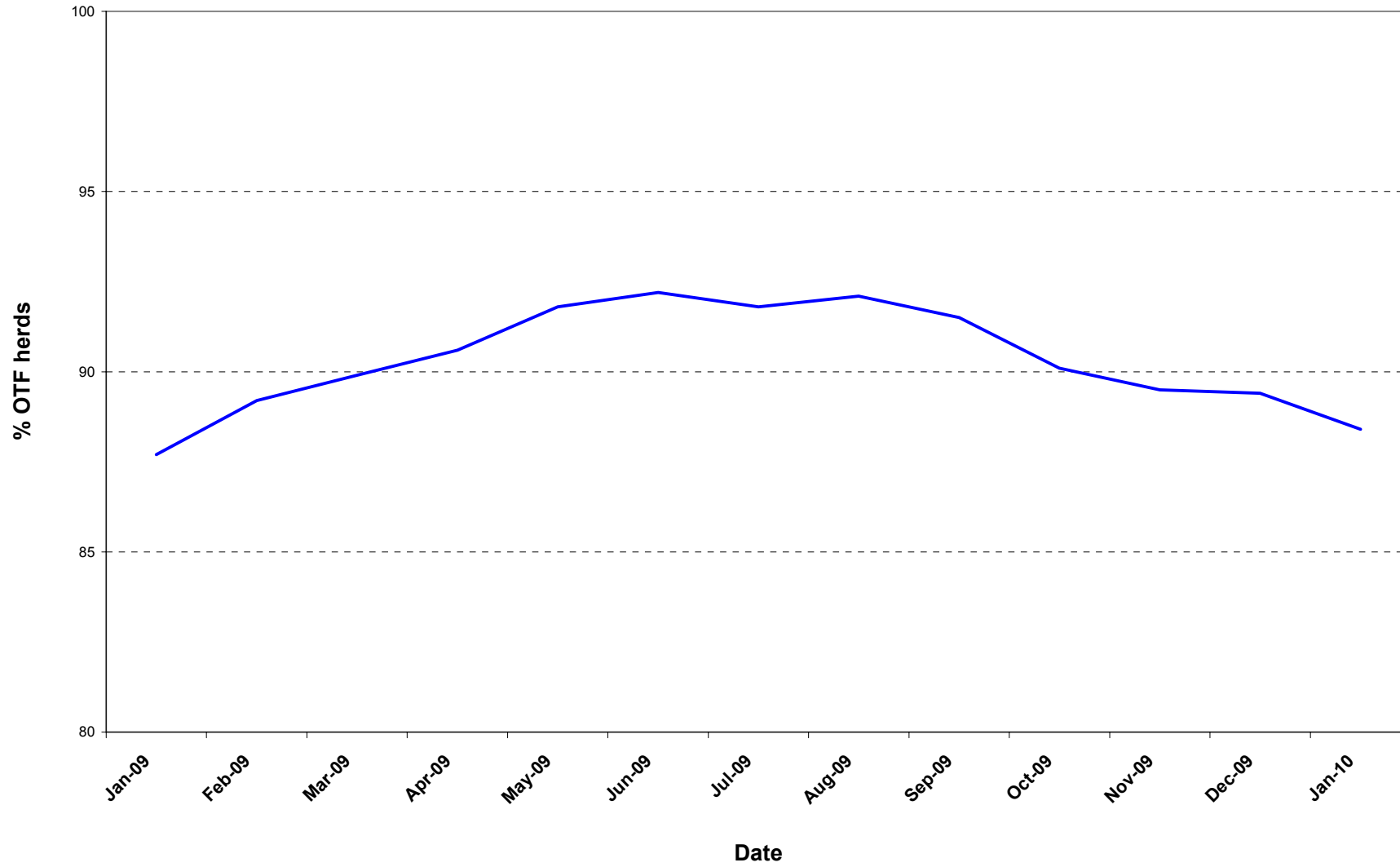
^ numerator includes all herds that had confirmed TB within the 12 month period

Annual confirmed TB herd prevalence^ by DVO (Northern Region)



^ numerator includes all herds that had confirmed TB within the 12 month period

% of operational herds that are officially tuberculosis free (OTF herds)



Month = December 2009

Ref.	Total	Armagh	Ballymena	Coleraine	Dungannon	Enniskillen	Larne	L'derry	Newry	Nt'ards	Omagh	
d1	No. of herds with TB reactors during month	211	16	12	34	15	27	7	15	32	25	28
d2	No. of new reactor herds during month	142	8	10	26	10	17	5	14	18	14	20
d3	No. of new reactor herds since start of year	1293	121	64	175	136	155	48	46	236	144	168
d4	No. of new reactor herds in the previous 12 months	1293	121	64	175	136	155	48	46	236	144	168
d26	No. of new reactor herds in the previous 13-24 months	1273	95	57	130	136	202	61	49	242	150	151
d5	No. of TB reactor animals during month	707	68	35	97	53	83	8	26	135	67	135
d6	No. of TB reactor animals since start of year	8198	1184	241	827	591	1176	161	147	1797	1077	997
d7	No. of reactor animals in the previous 12 months	8198	1184	241	827	591	1176	161	147	1797	1077	997
d27	No. of reactor animals in the previous 13-24 months	8390	1140	176	697	631	1499	251	172	1629	1389	806
d8	Herd Prevalence (%)	6.85	5.46	5.43	9.91	4.48	6.28	2.68	16.85	6.91	9.92	7.09
d20	Cumulative herd incidence in year (%)	5.61	5.40	4.59	6.92	4.83	5.04	2.90	5.39	6.52	7.93	5.53
d9	Annual herd incidence over the last 12 months (%)	5.61	5.40	4.59	6.92	4.83	5.04	2.90	5.39	6.52	7.93	5.53
d28	Annual herd incidence over the last 13-24 months (%)	5.57	4.27	4.14	5.14	4.92	6.74	3.72	5.68	6.75	8.35	4.93
d16	2008 Herd Incidence (%)	5.57	4.27	4.14	5.14	4.92	6.74	3.72	5.68	6.75	8.35	4.93
d10	2007 Herd Incidence (%)	5.35	6.08	4.99	5.07	5.28	5.16	2.70	3.85	5.61	8.83	4.90
d11	2006 Herd Incidence (%)	6.23	6.92	5.48	6.36	5.84	6.27	4.36	6.43	6.48	9.70	4.81
d38	2005 Herd Incidence (%)	7.22	6.38	6.87	9.13	8.45	6.77	4.69	5.86	6.28	10.22	6.68
d30	2004 Herd Incidence (%)	9.17	7.54	9.01	11.78	9.47	9.73	5.97	3.75	7.44	13.37	10.19
d21	Cumulative animal incidence in year (%)	0.512	0.694	0.217	0.390	0.301	0.716	0.120	0.241	0.784	0.628	0.488
d12	Annual animal incidence over the last 12 months (%)	0.512	0.694	0.217	0.390	0.301	0.716	0.120	0.241	0.784	0.628	0.488
d29	Annual animal incidence over the last 13-24 months (%)	0.527	0.675	0.165	0.342	0.325	0.894	0.190	0.272	0.723	0.802	0.390
d15	2008 Animal Incidence (%)	0.527	0.675	0.165	0.342	0.325	0.894	0.190	0.272	0.723	0.802	0.390
d13	2007 Animal Incidence (%)	0.445	0.385	0.177	0.248	0.403	0.637	0.186	0.093	0.740	0.797	0.282

d14	2006 Animal Incidence (%)	0.548	0.496	0.170	0.279	0.459	0.934	0.205	0.230	0.862	1.000	0.304
d39	2005 Animal Incidence (%)	0.590	0.424	0.279	0.440	0.684	0.871	0.167	0.213	0.688	1.160	0.415
d31	2004 Animal Incidence (%)	0.809	0.453	0.381	0.598	0.907	1.551	0.406	0.108	0.842	1.380	0.600
d34	APT during current month	2.79	2.57	1.89	2.93	2.24	3.36	0.30	2.67	4.27	2.77	3.91
d22	APT since start of year	3.41	4.49	1.68	2.82	2.25	4.63	1.01	1.89	4.46	4.05	3.55
d17	Current 12 month moving average APT	3.41	4.49	1.68	2.82	2.25	4.63	1.01	1.89	4.46	4.05	3.55
d18	2008 APT	3.54	4.51	1.34	2.65	2.38	5.69	1.60	2.09	4.36	4.80	2.78
d19	2007 APT	3.08	2.49	1.44	1.94	2.88	4.24	1.56	0.77	4.69	4.95	2.20
d42	2006 APT	3.49	3.00	1.30	2.03	3.06	5.52	1.60	1.66	5.23	5.66	2.16
d40	2005 APT	3.65	2.58	2.01	2.86	4.28	5.44	1.25	1.67	4.08	6.28	2.73
d32	2004 APT	4.86	2.88	2.58	3.72	5.59	8.62	2.91	0.79	5.00	7.69	3.87
d23	No. negative in contacts since start of year	707	96	1	1	152	75	9	3	134	111	125
d46	No. Negative in contacts over last 12 months	707	96	1	1	152	75	9	3	134	111	125
d24	No. negative in contacts during 2008	611	117	0	35	6	49	12	5	94	200	93
d25	No. negative in contacts during 2007	589	38	3	15	49	59	14	1	40	248	122
d43	No. negative in contacts during 2006	689	4	1	58	122	106	2	14	83	240	59
d41	No. negative in contacts during 2005	1208	25	8	93	48	377	5	7	12	584	49
d33	No. negative in contacts during 2004	673	37	26	18	15	191	2	1	140	187	56
d36	Reactor removal time 2009	11.6	13.7	8.2	8.9	9.6	11.6	10.3	8.2	11.6	12.3	8.9
d37	Reactor removal time 2008	11.6	12.3	8.9	8.9	9.6	9.6	9.6	8.2	12.3	12.3	8.2
d45	Reactor removal time 2007	12.3	12.3	12.3	11.0	12.3	8.9	13.0	8.9	13.0	13.0	8.9
d35	Reactor removal time 2006	13.0	12.3	9.6	11.6	13.7	11.6	13.0	10.3	13.7	13.7	9.6
D44	Reactor removal time 2005	13.0	10.3	13.0	13.0	13.0	13.0	14.4	13.0	15.8	12.3	11.6

Tuberculosis: number of reactor herds by month and by DVO in 2009 and unique herd breakdowns during the year

2009		DVO_CODE										
Year	Month	Armagh	Ballymena	Coleraine	Dungannon	Enniskillen	Larne	L'Derry	Newry	Nt'Ards	Omagh	Total
2009	1	13	14	29	15	14	7	4	28	11	19	154
2009	2	8	5	15	12	14	9	5	19	8	19	114
2009	3	15	4	18	20	9	4	2	17	16	14	119
2009	4	12	6	16	12	19	3	5	22	7	18	120
2009	5	13	2	14	6	8	1	2	8	15	5	74
2009	6	9	4	9	8	2	2	0	21	8	7	70
2009	7	12	3	8	6	19	3	3	24	17	13	108
2009	8	11	3	7	8	15	0	2	16	7	5	74
2009	9	7	2	10	15	7	1	2	15	14	5	78
2009	10	4	3	6	15	13	5	1	29	10	19	105
2009	11	9	8	17	9	18	8	6	19	17	24	135
2008	12	8	10	26	10	17	5	14	18	14	20	142
Total		121	64	175	136	155	48	46	236	144	168	1293

Unique Herd Breakdowns		DVO_CODE										
Year	Armagh	Ballymena	Coleraine	Dungannon	Enniskillen	Larne	L'Derry	Newry	Nt'Ards	Omagh	Total Herds	
2009	158	75	213	163	209	56	51	306	190	187	1608	

Tuberculosis: number of reactor herds by month and by DVO in 2008 and unique herd breakdowns during the year

2008		DVO_CODE										
Year	Month	Armagh	Ballymena	Coleraine	Dungannon	Enniskillen	Larne	L'Derry	Newry	Nt'Ards	Omagh	Total
2008	1	10	6	14	16	19	9	4	17	6	22	123
2008	2	11	4	15	16	19	7	3	28	15	23	141
2008	3	6	11	5	6	15	4	5	15	14	15	96
2008	4	7	7	12	12	20	4	2	26	14	17	121
2008	5	13	6	10	10	11	3	7	23	10	13	106
2008	6	4	2	6	2	13	1	6	19	11	8	72
2008	7	7	1	4	13	7	2	2	17	13	9	75
2008	8	4	1	7	8	13	4	2	25	17	8	89
2008	9	6	2	9	14	19	4	1	18	15	3	91
2008	10	7	4	12	10	26	3	4	22	11	9	108
2008	11	14	7	21	15	20	9	9	18	11	12	136
2008	12	6	6	15	14	20	11	4	14	13	12	115
Total		95	57	130	136	202	61	49	242	150	151	1273

Unique Herd Breakdowns		DVO_CODE										
Year	Armagh	Ballymena	Coleraine	Dungannon	Enniskillen	Larne	L'Derry	Newry	Nt'Ards	Omagh	Total Herds	
2008	128	66	158	167	248	67	56	315	215	178	1598	

Tuberculosis: number of reactor herds by month and by DVO in 2007 and unique herd breakdowns during the year

2007		DVO_CODE										
Year	Month	Armagh	Ballymena	Coleraine	Dungannon	Enniskillen	Larne	L'Derry	Newry	Nt'Ards	Omagh	Total
2007	1	17	11	15	24	13	10	0	20	14	11	135
2007	2	12	10	14	12	17	5	7	15	13	19	124
2007	3	10	5	13	15	25	3	5	12	10	10	108
2007	4	14	6	4	11	12	4	4	19	8	15	97
2007	5	11	3	8	7	9	1	1	16	13	15	84
2007	6	9	2	7	13	8	4	0	15	9	3	70
2007	7	7	3	5	6	11	1	2	17	7	12	71
2007	8	9	6	12	6	16	3	0	19	14	6	91
2007	9	9	3	10	15	9	3	1	20	16	8	94
2007	10	13	6	4	10	14	0	1	18	18	13	97
2007	11	17	10	31	19	18	5	7	20	25	17	169
2007	12	9	7	12	14	9	7	5	16	20	25	124
Total		137	72	135	152	161	46	33	207	167	154	1264

Unique Herd Breakdowns		DVO_CODE										
Year	Armagh	Ballymena	Coleraine	Dungannon	Enniskillen	Larne	L'Derry	Newry	Nt'Ards	Omagh	Total Herds	
2007	181	82	169	196	221	57	35	277	239	176	1633	

A herd is defined as being a TB reactor herd if it had at least one TB reactor animal in that month and no TB reactor animals during the previous 12 months.

A TB unique herd breakdown is defined as a herd which has had at least one TB reactor during the specified calendar year irrespective of any TB reactors during the previous calendar year

Tuberculosis: number of reactor animals by month and by DVO 2009

2009		DVO_CODE										
Year	Month	Armagh	Ballymena	Coleraine	Dungannon	Enniskillen	Larne	L'Derry	Newry	Nt'Ards	Omagh	Total
2009	1	125	47	98	80	124	9	15	194	96	58	846
2009	2	99	6	105	46	103	30	7	130	118	81	725
2009	3	133	38	67	74	66	12	5	120	105	59	679
2009	4	63	12	81	66	170	9	13	155	97	106	772
2009	5	169	10	38	30	53	2	2	106	59	147	616
2009	6	67	21	29	23	53	2	0	140	50	43	428
2009	7	130	12	41	27	129	12	49	161	90	40	691
2009	8	96	15	22	44	124	0	11	189	36	78	615
2009	9	145	7	75	62	80	2	3	177	97	21	669
2009	10	32	18	96	43	100	25	6	183	106	95	704
2009	11	57	20	78	43	91	50	10	107	156	134	746
2009	12	68	35	97	53	83	8	26	135	67	135	707
Total		1184	241	827	591	1176	161	147	1797	1077	997	8198

Tuberculosis: number of reactor animals by month and by DVO 2008

2008		DVO_CODE										
Year	Month	Armagh	Ballymena	Coleraine	Dungannon	Enniskillen	Larne	L'Derry	Newry	Nt'Ards	Omagh	Total
2008	1	77	26	65	86	124	15	19	80	104	96	692
2008	2	107	6	96	86	126	31	13	173	126	131	895
2008	3	42	38	62	42	60	9	8	99	173	84	617
2008	4	38	12	58	49	111	30	14	180	57	83	632
2008	5	49	25	38	32	79	27	10	98	192	70	620
2008	6	24	3	85	43	73	2	6	157	54	105	552
2008	7	79	3	12	48	119	10	12	114	135	57	589
2008	8	37	5	49	48	115	32	12	186	131	32	647
2008	9	87	4	22	61	140	10	3	71	144	9	551
2008	10	29	9	29	26	181	25	32	222	95	16	664
2008	11	304	31	99	44	221	34	36	144	116	39	1068
2008	12	267	14	82	66	150	26	7	105	62	84	863
Total		1140	176	697	631	1499	251	172	1629	1389	806	8390

Tuberculosis: number of reactor animals by month and by DVO 2007

2007		DVO_CODE										
Year	Month	Armagh	Ballymena	Coleraine	Dungannon	Enniskillen	Larne	L'Derry	Newry	Nt'Ards	Omagh	Total
2007	1	36	16	93	162	79	45	0	107	120	41	699
2007	2	82	14	67	83	114	29	11	122	92	50	664
2007	3	36	23	96	77	141	15	5	265	142	47	847
2007	4	71	24	20	76	45	60	5	175	76	48	600
2007	5	40	17	17	49	49	1	1	133	91	32	430
2007	6	30	2	12	72	78	12	0	74	74	32	386
2007	7	67	6	9	10	60	5	3	127	87	32	406
2007	8	137	31	39	42	102	26	3	127	98	34	639
2007	9	39	5	18	64	119	6	1	137	95	34	518
2007	10	41	8	6	18	96	2	4	150	151	54	530
2007	11	45	19	90	82	139	9	8	140	209	104	845
2007	12	42	38	67	69	87	44	17	112	189	70	735
Total		666	203	534	804	1109	254	58	1669	1424	578	7299

**A TB reactor animal is defined as an animal where the manual interpretation field for a skin test is positive ('P') with the first test date being taken as the time at which the animal became a reactor.
Animals with lesions at routine slaughter ('LRS') are not taken into account.**

Month = December 2009

Ref.	Total	Armagh	Ballymena	Coleraine	Dungannon	Enniskillen	Larne	L'derry	Newry	Nt'ards	Omagh	
b16	No. herds with any test completed in month	3480	324	255	394	379	474	290	116	504	279	465
b17	No. herds with any test, from start of year	23176	2252	1403	2552	2836	3084	1681	859	3627	1819	3063
b29	All herds with any test, from start of year	24144	2333	1479	2690	2968	3159	1769	895	3756	1928	3167
b18	No. herds with any test, from start of year (no cattle)	968	81	76	138	132	75	88	36	129	109	104
b19	No. herds with herd test completed in month	3082	293	221	343	335	430	261	89	463	252	395
b20	No. herds with herd test, from start of year	23031	2240	1394	2529	2814	3078	1653	854	3617	1816	3036
b30	All herds with herd test, from start of year	24023	2321	1471	2675	2949	3154	1744	891	3749	1927	3142
b21	No. herds with herd test, from start of year (no cattle)	992	81	77	146	135	76	91	37	132	111	106
b22	No. herds with herd test during last 12 months	23031	2240	1394	2529	2814	3078	1653	854	3617	1816	3036
b31	No. herds with herd test during last 13-24 months	22835	2227	1376	2527	2767	2995	1638	863	3585	1797	3060
b28	No. herds with herd test during 2008	22835	2227	1376	2527	2767	2995	1638	863	3585	1797	3060
b23	No. herds with herd test during 2007	23642	2253	1444	2664	2881	3119	1702	858	3690	1891	3140
b24	No. herds with herd test during 2006	24301	2369	1496	2706	2944	3173	1743	933	3766	1948	3223
b39	No. herds with herd test during 2005	24820	2430	1529	2826	3031	3204	1771	904	3840	2005	3280
b32	No. herds with herd test during 2004	25349	2468	1588	2877	3127	3277	1893	960	3833	2019	3307
b25	No. herds with any risk test completed	10165	1306	492	923	1021	1330	459	269	2307	924	1134
b26	No. herds with herd risk test completed	7233	987	258	497	498	1075	186	137	2109	705	781
b27	No. herds with restricted herd test completed	2565	269	109	293	301	304	115	71	522	323	258

Month = December 2009

Ref	Total	Armagh	Ballymena	Coleraine	Dungannon	Enniskillen	Larne	L'derry	Newry	Nt'ards	Omagh	
c1	Total number of tests in current month	3884	376	282	433	437	324	126	549	324	524	
c2	Total number of tests from start of year	42722	4687	2297	4423	5137	5429	2725	1366	7597	3690	5371
c3	No. tests during the same time period in the previous year	41622	4528	2250	4305	4809	5311	2675	1416	7167	3824	5337
c4	% change between years	2.6	3.4	2.0	2.7	6.4	2.2	1.8	-3.7	5.7	-3.6	0.6
c5	No. tests in the previous 12 months	42722	4687	2297	4423	5137	5429	2725	1366	7597	3690	5371
c6	No. animal tests in current month	253397	26487	18506	33081	23625	24704	26971	9726	31616	24182	34499
c7	No. animal tests from start of year	2405029	263660	143052	293549	263152	254071	159428	77912	402897	266225	281083
c8	No. animal tests during the same time period in the previous year	2368557	252845	131530	262897	265143	263294	157367	82425	373274	289463	290319
c9	% change between years	1.5	4.1	8.1	10.4	-0.8	-3.6	1.3	-5.8	7.4	-8.7	-3.3
c10	No. animal tests in previous 12 months	2405029	263660	143052	293549	263152	254071	159428	77912	402897	266225	281083
c11	No. cattle eligible for TB testing	1612813	155281	113733	211720	187793	162705	139826	63804	207798	165232	204921
c12	No. cattle herds eligible for TB testing	26287	2576	1597	2926	3182	3362	1943	1032	4080	2103	3486
c13	No. restricted herd tests during month	345	40	16	36	38	35	10	7	74	55	34
c14	No. animals tested	54538	7658	1781	6333	6198	4060	2243	2211	10518	7989	5547
c15	No. herd tests during month	3082	293	221	343	335	430	261	89	463	252	395
c16	No. animals tested	251219	26239	18388	32922	23472	24421	26676	9669	31316	24033	34083
c17	No. individual tests during month	802	83	61	90	102	79	63	37	86	72	129
c18	No. animals tested	2178	248	118	159	153	283	295	57	300	149	416
c23	No. animals TB tested since start of year	1601500	170614	110939	212118	196296	164205	134507	60943	229310	171602	204195
c19	No. animals TB tested in previous 12 months	1601500	170614	110939	212118	196296	164205	134507	60943	229310	171602	204195
c24	No. animals TB tested in previous 13-24 months	1591976	168976	106828	203947	194163	167759	132370	63159	225200	173199	206849
c22	No. animals TB tested in 2008	1591976	168976	106828	203947	194163	167759	132370	63159	225200	173199	206849
c20	No. animals TB tested in 2007	1640552	172852	114560	215201	199652	174151	136324	62184	225462	178638	205208
c21	No. animals TB tested in 2006	1711870	182776	120699	220008	210854	182488	144582	69516	234093	185689	215645
c26	No. animals TB tested in 2005	1776064	183292	125632	237269	222514	184630	151248	66659	234585	191843	226983
c25	No. animals TB tested in 2004	1865762	185178	134129	249856	240990	198531	162067	76106	239332	202259	238461

Month = December 2009

Ref		Total	Armagh	Ballymena	Coleraine	Dungannon	Enniskillen	Larne	L'derry	Newry	Nt'ards	Omagh
f1	No. of Officially Tuberculosis Free Herds (OTF)	23599	2303	1503	2591	2890	3098	1745	891	3604	1807	3167
f2	No. of Officially Tuberculosis Suspended Herds (OTS)	1985	218	87	238	218	166	204	105	309	162	278
f3	No. of Officially Tuberculosis Withdrawn Herds (OTW)	1101	113	49	129	127	107	44	34	236	149	113
f4	% herds that are OTF	88.4	87.4	91.7	87.6	89.3	91.9	87.6	86.5	86.9	85.3	89.0
f5	% herds that are OTS	7.4	8.3	5.3	8.0	6.7	4.9	10.2	10.2	7.4	7.6	7.8
f6	% herds that are OTW	4.1	4.3	3.0	4.4	3.9	3.2	2.2	3.3	5.7	7.0	3.2

		Month = August 2009										
Ref	(Data lagged by 4 months)	Total	Armagh	Ballymena	Coleraine	Dungannon	Enniskillen	Larne	L'derry	Newry	Nt'ards	Omagh
e1	No. TB animals found at routine slaughter in current year	347	46	21	34	40	13	7	9	96	44	37
e19	No. TB animals found at routine slaughter in last 12 months	619	75	39	55	78	29	16	12	166	88	61
e20	No. TB animals found at routine slaughter in last 13-24 months	696	89	32	45	95	62	22	6	165	112	68
e6	No. TB animals found at routine slaughter in 2008	638	73	32	51	92	47	19	6	153	106	59
e2	No. TB animals found at routine slaughter in 2007	695	103	31	32	95	60	21	13	169	107	64
e3	No. TB animals found at routine slaughter in 2006	640	81	22	41	86	54	34	16	144	111	51
e4	No. TB animals found at routine slaughter in 2005	656	82	23	46	89	56	22	18	123	146	51
e5	No. TB animals found at routine slaughter in 2004	774	78	38	87	98	53	46	9	152	136	77
e7	No. herds with TB found at routine slaughter in current year	239	32	11	29	24	11	7	8	56	32	29
e21	No. herds with TB found at routine slaughter in last 12 months	418	54	18	45	52	25	14	11	96	58	45
e22	No. herds with TB found at routine slaughter in last 13-24 months	497	67	18	32	69	51	20	6	95	85	54
e12	No. herds with TB found at routine slaughter in 2008	450	60	16	37	68	36	18	6	90	72	47
e8	No. herds with TB found at routine slaughter in 2007	513	71	14	25	67	55	20	10	116	85	50
e9	No. herds with TB found at routine slaughter in 2006	461	63	19	33	65	43	28	16	80	77	37
e10	No. herds with TB found at routine slaughter in 2005	542	67	21	42	69	47	22	17	103	109	45
e11	No. herds with TB found at routine slaughter in 2004	630	66	32	72	87	43	36	9	129	99	57
e13	% of TB animals that were LRS in current year	6.1	5.0	11.5	6.6	9.3	1.6	8.4	8.1	7.4	6.3	5.7
e23	% of TB animals that were LRS in last 12 months	6.8	4.6	15.1	7.2	11.7	1.9	8.6	6.3	8.7	7.6	7.4
e24	% of TB animals that were LRS in last 13-24 months	8.1	12.6	14.5	6.5	12.5	4.7	9.2	4.6	9.2	6.5	6.9
e18	% of TB animals that were LRS in 2008	7.1	6.0	15.4	6.8	12.7	3.0	7.0	3.4	8.6	7.1	6.8
e14	% of TB animals that were LRS in 2007	8.7	13.4	13.2	5.7	10.6	5.1	7.6	18.3	9.2	7.0	10.0
e15	% of TB animals that were LRS in 2006	6.4	8.2	9.7	6.3	8.2	3.1	10.3	9.1	6.7	5.6	7.2
e16	% of TB animals that were LRS in 2005	5.9	9.5	6.1	4.2	5.5	3.4	8.0	11.3	7.1	6.2	5.1
e17	% of TB animals that were LRS in 2004	4.9	8.5	6.9	5.5	4.3	1.7	6.5	9.9	7.1	4.7	5.1

		Month = August 2009										
		(Data lagged by 4 months)										
Ref		Total	Armagh	Ballymena	Coleraine	Dungannon	Enniskillen	Larne	L'derry	Newry	Nt'ards	Omagh
g1	No. of confirmed TB reactors during current year	2078	278	65	230	168	327	16	50	418	274	252
g31	No. of confirmed TB reactors during last 12 months	3192	516	82	341	229	565	47	103	573	406	330
g32	No. of confirmed TB reactors during last 13-24 months	3335	271	96	306	271	495	68	68	518	756	486
g6	No. of confirmed TB reactors 2008	3298	425	76	329	231	536	75	102	514	590	420
g2	No. of confirmed TB reactors 2007	3204	306	102	273	370	523	92	37	537	640	324
g3	No. of confirmed TB reactors 2006	3973	407	84	296	370	721	73	87	787	829	319
g4	No. of confirmed TB reactors 2005	3990	292	155	352	450	533	50	65	702	996	395
g5	No. of confirmed TB reactors 2004	4950	336	231	606	574	677	150	26	669	1133	548
g7	Total animals with confirmed TB during current year	2425	324	86	264	208	340	23	59	514	318	289
g33	Total animals with confirmed TB during last 12 months	3811	591	121	396	307	594	63	115	739	494	391
g34	Total animals with confirmed TB in last 13-24 months	4031	360	128	351	366	557	90	74	683	868	554
g12	Total animals with confirmed TB in 2008	3936	498	108	380	323	583	94	108	667	696	479
g8	Total animals with confirmed TB in 2007	3899	409	133	305	465	583	113	50	706	747	388
g9	Total animals with confirmed TB in 2006	4613	488	106	337	456	775	107	103	931	940	370
g10	Total animals with confirmed TB in 2005	4646	374	178	398	539	589	72	83	825	1142	446
g11	Total animals with confirmed TB in 2004	5724	414	269	693	672	730	196	35	821	1269	625
g13	Confirmed TB animal prevalence in current year (%)	0.211	0.254	0.119	0.188	0.157	0.285	0.027	0.147	0.278	0.248	0.209
g35	Confirmed TB animal prevalence in last 12 months (%)	0.237	0.298	0.109	0.189	0.157	0.359	0.046	0.184	0.325	0.289	0.191
g36	Confirmed TB animal prevalence in last 13-24 months (%)	0.248	0.211	0.114	0.168	0.187	0.325	0.065	0.114	0.301	0.494	0.263
g18	Confirmed TB animal prevalence in 2008 (%)	0.247	0.295	0.101	0.186	0.166	0.348	0.071	0.171	0.296	0.402	0.232
g14	Confirmed TB animal prevalence in 2007 (%)	0.240	0.237	0.116	0.142	0.233	0.335	0.083	0.080	0.313	0.418	0.189
g15	Confirmed TB animal prevalence in 2006 (%)	0.228	0.267	0.088	0.153	0.216	0.425	0.074	0.148	0.398	0.506	0.172
g16	Confirmed TB animal prevalence in 2005 (%)	0.260	0.204	0.142	0.168	0.242	0.319	0.048	0.125	0.352	0.595	0.196
g17	Confirmed TB animal prevalence in 2004 (%)	0.249	0.224	0.201	0.277	0.279	0.368	0.121	0.046	0.343	0.627	0.262

g19	No. herds with confirmed TB in current year	871	88	40	113	81	108	21	21	185	116	98
g37	No. herds with confirmed TB in last 12 months	1308	133	53	157	131	176	44	36	271	172	135
g38	No. herds with confirmed TB in last 13-24 months	1472	146	65	134	164	203	41	39	269	232	179
g24	No. herds with confirmed TB in 2008	1412	129	57	138	160	197	50	46	271	207	157
g20	No. herds with confirmed TB in 2007	1507	185	56	127	184	200	49	31	266	230	179
g21	No. herds with confirmed TB in 2006	1664	194	68	147	202	222	59	60	278	263	171
g22	No. herds with confirmed TB in 2005	1856	169	104	235	244	216	63	50	262	298	215
g23	No. herds with confirmed TB in 2004	1861	129	95	277	239	277	53	21	238	280	252
g25	Confirmed TB herd prevalence in current year (%)	5.29	5.06	4.65	6.78	4.22	4.85	1.96	3.74	6.30	8.50	4.61
g39	Confirmed TB herd prevalence in last 12 months (%)	5.61	5.93	3.76	6.14	4.57	5.65	2.57	4.08	7.47	9.39	4.38
g40	Confirmed TB herd prevalence in last 13-24 months (%)	6.21	6.38	4.49	5.10	5.74	6.53	2.34	4.29	7.34	12.53	5.61
g30	Confirmed TB herd prevalence in 2008 (%)	6.18	5.79	4.14	5.46	5.78	6.58	3.05	5.33	7.56	11.52	5.13
g26	Confirmed TB herd prevalence in 2007 (%)	6.37	8.21	3.88	4.77	6.39	6.41	2.88	3.61	7.21	12.16	5.70
g27	Confirmed TB herd prevalence in 2006 (%)	6.85	8.19	4.55	5.43	6.86	7.00	3.38	6.43	7.38	13.50	5.31
g28	Confirmed TB herd prevalence in 2005 (%)	7.48	6.95	6.80	8.32	8.05	6.74	3.56	5.53	6.82	14.86	6.55
g29	Confirmed TB herd prevalence in 2004 (%)	7.34	5.23	5.98	9.63	7.64	8.45	2.80	2.19	6.21	13.87	7.62

Explanatory Comments for Tuberculosis Statistics - D. Results

Ref	Data Title	Explanation
D1	No. of herds with TB reactors during month	A herd is included in this figure if the herd number had a TB skin test reactor during the above month.
D2	No. of new reactor herds during month	A herd is defined as being a TB reactor herd if it had at least one TB reactor animal in that month and no TB reactor animals during the previous 12 months.
D3	No. of new reactor herds since start of year	= Since 1st January
D4	No. of new reactor herds in the previous 12 months	Last 12 month period from the above month.
D26	No. of new reactor herds in previous 13-24 months	Last 13-24 month period from the above month.
D5	No. of TB reactor animals during month	A TB reactor animal is defined as an animal where the manual interpretation field for a skin test is positive ('P') with the first test date being taken as the time at which the animal became a reactor. Currently animals with lesionas at routine slaughter ("LRS")are not taken into account
D6	No. of TB reactor animals since start of year	= Since 1st January
D7	No. of reactor animals in the previous 12 months	Last 12 month period from the above month.
D27	No. of reactor animals in previous 13-24 months	Last 13-24 month period from the above month.
D8	Herd Prevalence (%)	Number of herds with a TB reactor during the above month as a proportion of cattle herds which have presented cattle for a TB herd test during the same time period.
D20	Cumulative herd incidence in year (%)	Number of NEW reactor herds since the start of the calendar year as a proportion of cattle herds which have presented cattle for a TB herd test during the same time period.
D9	Annual herd incidence over the last 12 months (%)	Number of NEW reactor herds during the last 12 months as a proportion of cattle herds which have presented cattle for a TB herd test during the same time period.
D28	Annual herd incidence over the last 13-24 months (%)	Number of NEW reactor herds during the last 13-24 months as a proportion of cattle herds which have presented cattle for a TB herd test during the same time period.
D38	2005 Herd Incidence (%)	Number of NEW reactor herds during the year as a proportion of cattle herds which have presented cattle for a TB herd test during the same time period.
D30	2004 Herd Incidence (%)	Number of NEW reactor herds during the year as a proportion of cattle herds which have presented cattle for a TB herd test during the same time period.
D16	2008 Herd Incidence (%)	Number of NEW reactor herds during the year as a proportion of cattle herds which have presented cattle for a TB herd test during the same time period.
D10	2007 Herd Incidence (%)	Number of NEW reactor herds during the year as a proportion of cattle herds which have presented cattle for a TB herd test during the same time period.
D11	2006 Herd Incidence (%)	Number of NEW reactor herds during the year as a proportion of cattle herds which have presented cattle for a TB herd test during the same time period.
D21	Cumulative animal incidence in year (%)	Number of reactor animals during the above month as a proportion of cattle which have been presented for a TB test during the same time period.
D12	Annual animal incidence over the last 12 months (%)	Number of reactor animals during the last 12 months as a proportion of cattle which have been presented for a TB test during the same time period.
D29	Annual animal incidence over the last 13-24 months (%)	Number of reactor animals during the last 13-24 months as a proportion of cattle which have been presented for a TB test during the same time period.
D39	2005 Animal Incidence (%)	Number of reactor animals during the year as a proportion of cattle which have been presented for a TB herd test during the same time period.
D31	2004 Animal Incidence (%)	Number of reactor animals during the year as a proportion of cattle which have been presented for a TB herd test during the same time period.
D15	2008 Animal Incidence (%)	Number of reactor animals during the year as a proportion of cattle which have been presented for a TB herd test during the same time period.
D13	2007 Animal Incidence (%)	Number of reactor animals during the year as a proportion of cattle which have been presented for a TB herd test during the same time period.
D14	2006 Animal Incidence (%)	Number of reactor animals during 2006 as a proportion of cattle which have been presented for a TB herd test during the same time period.

D34	APT during current month	= The reactor disclosure rate per 1,000 animal tests current calendar month.
D22	APT since start of year	The reactor disclosure rate per 1,000 animal tests since the start of the calendar year.
D17	Current 12 month moving average APT	The reactor disclosure rate per 1,000 animal tests. Current refers to the rate over the last 12 months.
D42	2006 APT	The reactor disclosure rate per 1,000 animal tests during the calendar year.
D40	2005 APT	The reactor disclosure rate per 1,000 animal tests during the calendar year.
D32	2004 APT	The reactor disclosure rate per 1,000 animal tests during the calendar year.
D18	2008 APT	The reactor disclosure rate per 1,000 animal tests during the calendar year.
D19	2007 APT	The reactor disclosure rate per 1,000 animal tests during the calendar year.
D23	No. negative in contacts since start of year	Number of animals taken as negative in contacts since the start of the year
d46	No. Negative in contacts over last 12 months (%)	= Number of negative in contacts during the last 12 months
D43	No. negative in contacts during 2006	Number of animals taken as negative in contacts during the year
D41	No. negative in contacts during 2005	Number of animals taken as negative in contacts during the year
D33	No. negative in contacts during 2004	Number of animals taken as negative in contacts during the year
D24	No. negative in contacts during 2008	Number of animals taken as negative in contacts during the year
D25	No. negative in contacts during 2007	Number of animals taken as negative in contacts during the year
D37	Reactor removal time 2008	Figures given are median values for working days estimated from calendar days (calendar days multiplied by 0.685). Reactors which are not yet slaughtered or where they they were first declared as reactors at slaughter are excluded.
D45	Reactor removal time 2007	Figures given are median values for working days estimated from calendar days (calendar days multiplied by 0.685). Reactors which are not yet slaughtered or where they they were first declared as reactors at slaughter are excluded.
D35	Reactor removal time 2006	Figures given are median values for working days estimated from calendar days (calendar days multiplied by 0.685). Reactors which are not yet slaughtered or where they they were first declared as reactors at slaughter are excluded.
D44	Reactor removal time 2005	Figures given are median values for working days estimated from calendar days (calendar days multiplied by 0.685). Reactors which are not yet slaughtered or where they they were first declared as reactors at slaughter are excluded.
D36	Reactor removal time 2009	Figures given are median values for working days estimated from calendar days (calendar days multiplied by 0.685). Reactors which are not yet slaughtered or where they they were first declared as reactors at slaughter are excluded.

Explanatory Comments for LRS Data

E1	No. TB animals found at routine slaughter in current year	Animals where M. bovis was cultured from TB-like lesions found at routine slaughter (LRS) during the year that were not identified as TB reactor animals
E19	No. TB animals found at routine slaughter in last 12 months	Animals where M. bovis was cultured from TB-like lesions found at routine slaughter (LRS) during the last 12 months that were not identified as TB reactor animals
E20	No. TB animals found at routine slaughter in last 13-24 months	Animals where M. bovis was cultured from TB-like lesions found at routine slaughter (LRS) during the last 12-24 months that were not identified as TB reactor animals
E6	No. TB animals found at routine slaughter in 2008	Animals where M. bovis was cultured from TB-like lesions found at routine slaughter (LRS) during the year that were not identified as TB reactor animals
E20	No. TB animals found at routine slaughter in 2007	Animals where M. bovis was cultured from TB-like lesions found at routine slaughter (LRS) during the year that were not identified as TB reactor animals
E3	No. TB animals found at routine slaughter in 2006	Animals where M. bovis was cultured from TB-like lesions found at routine slaughter (LRS) during the year that were not identified as TB reactor animals
E4	No. TB animals found at routine slaughter in 2005	Animals where M. bovis was cultured from TB-like lesions found at routine slaughter (LRS) during the year that were not identified as TB reactor animals
E5	No. TB animals found at routine slaughter in 2004	Animals where M. bovis was cultured from TB-like lesions found at routine slaughter (LRS) during the year that were not identified as TB reactor animals
E7	No. herds with TB found at routine slaughter in current year	Herds where M. bovis was cultured from TB-like lesions found in at least one animal at routine slaughter (LRS) during the year
E21	No. herds with TB found at routine slaughter in last 12 months	Herds where M. bovis was cultured from TB-like lesions found in at least one animal at routine slaughter (LRS) during the last 12 months
E22	No. herds with TB found at routine slaughter in last 13-24 months	Herds where M. bovis was cultured from TB-like lesions found in at least one animal at routine slaughter (LRS) during the last 13-24 months
E12	No. herds with TB found at routine slaughter in 2008	Herds where M. bovis was cultured from TB-like lesions found in at least one animal at routine slaughter (LRS) during the year
E8	No. herds with TB found at routine slaughter in 2007	Herds where M. bovis was cultured from TB-like lesions found in at least one animal at routine slaughter (LRS) during the year
E9	No. herds with TB found at routine slaughter in 2006	Herds where M. bovis was cultured from TB-like lesions found in at least one animal at routine slaughter (LRS) during the year
E10	No. herds with TB found at routine slaughter in 2005	Herds where M. bovis was cultured from TB-like lesions found in at least one animal at routine slaughter (LRS) during the year
E11	No. herds with TB found at routine slaughter in 2004	Herds where M. bovis was cultured from TB-like lesions found in at least one animal at routine slaughter (LRS) during the year
E13	% of TB animals that were LRS in current year	Herds where M. bovis was cultured from TB-like lesions found in at least one animal at routine slaughter (LRS) during the year
E23	% of TB animals that were LRS in last 12 months	Number of confirmedLRS animals divided by the number of TB reactors and confirmed LRS animals during the year expressed as a %
E24	% of TB animals that were LRS in last 13-24 months	Number of confirmedLRS animals divided by the number of TB reactors and confirmed LRS animals during the year expressed as a %
E18	% of TB animals that were LRS in 2008	Number of confirmedLRS animals divided by the number of TB reactors and confirmed LRS animals during the year expressed as a %
E14	% of TB animals that were LRS in 2007	Number of confirmedLRS animals divided by the number of TB reactors and confirmed LRS animals during the year expressed as a %
E15	% of TB animals that were LRS in 2006	Number of confirmedLRS animals divided by the number of TB reactors and confirmed LRS animals during the year expressed as a %
E16	% of TB animals that were LRS in 2005	Number of confirmedLRS animals divided by the number of TB reactors and confirmed LRS animals during the year expressed as a %
E17	% of TB animals that were LRS in 2004	Number of confirmedLRS animals divided by the number of TB reactors and confirmed LRS animals during the year expressed as a %