



Catchment Management Officers Update

Eileen Mallon

Update:

- NIEA Water Quality Improvement Grant
- Status of our waterbodies in the west
- Projects of interest

NIEA Water Quality Improvement Grant

- Now open for applications, closes on 14th June 2013.
- Aimed at voluntary and community groups, local councils and other not- for- profit organisations.
- £100k to be spent before the 31st March 2014.
- Maximum of £10,000/project.
- Must contribute to the improvement of local water quality.

A woman with blonde hair, wearing a white long-sleeved shirt and dark trousers, is sitting on a pebbly bank on the left side of the image, looking towards a river. In the background, a stone bridge with several arches spans across the river. The scene is surrounded by lush green trees and foliage under a clear blue sky.

WATER QUALITY IMPROVEMENT GRANT SCHEME

8 Successful Projects

7 Catchments

£62,435 spent by NIEA on projects

Total value of projects was £92,376

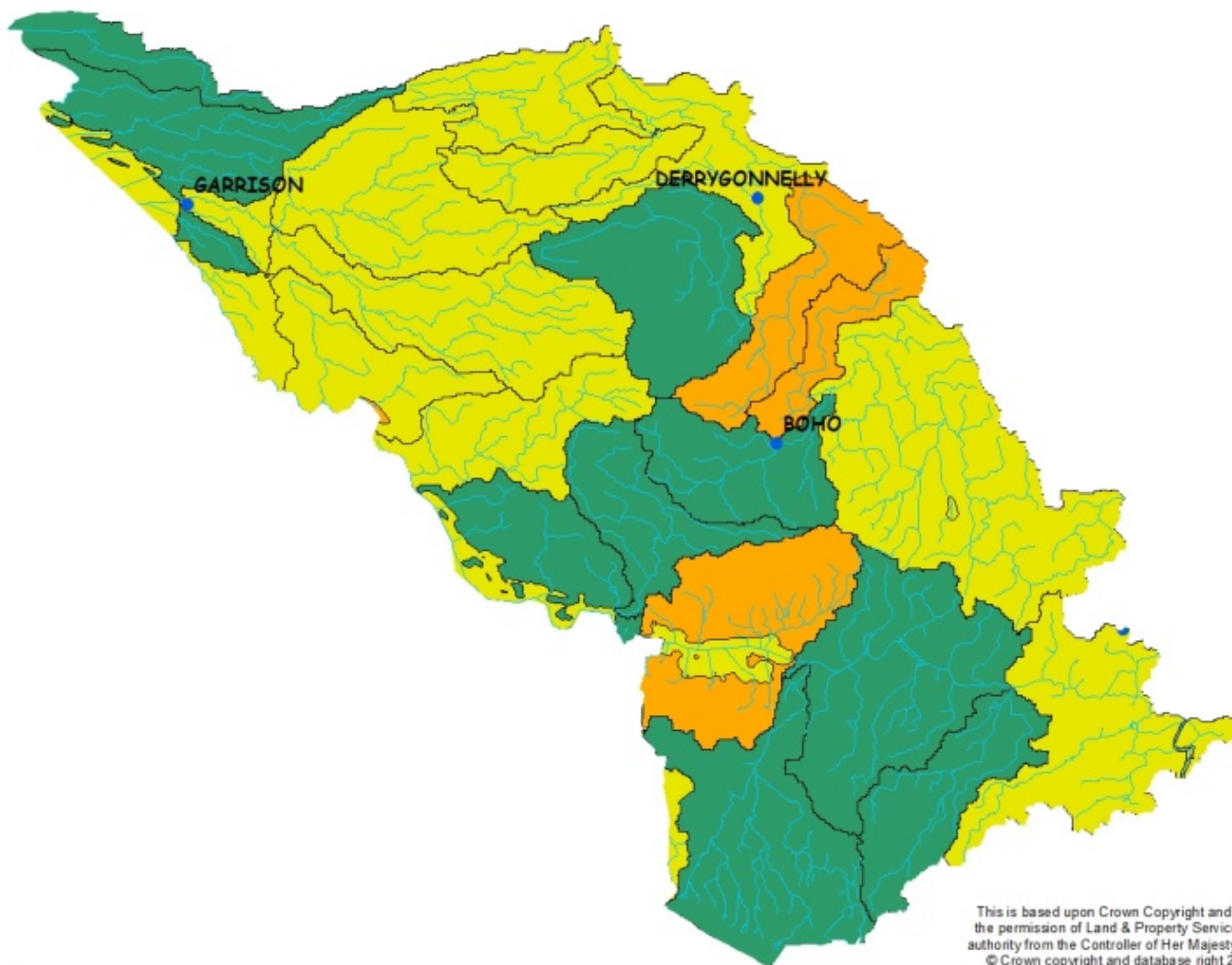


Earls River Restoration Project
Enniskillen Angling Club in
partnership with DCAL, EMEC
and a local landowner.

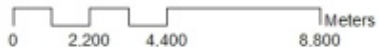
The project on a small tributary
near Lower Lough Erne resulted
in reducing poaching and
shading, improving river
substrate and restocking with
native Lough Erne fish.



LOUGH MELVIN AND ARNEY LMA 2012 STATUS



- Town
- RiverSegment
- Lake_Status_2012**
- OVERALL_EC**
- Good
- Moderate
- Poor
- Bad
- GE P
- MEP
- PEP
- BEP
- River Status 2012**
- OVER STATUS**
- Null
- High
- Good
- Moderate
- Poor
- Bad
- MEP
- PEP
- BEP



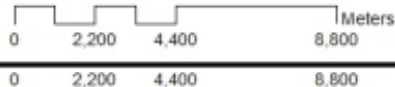
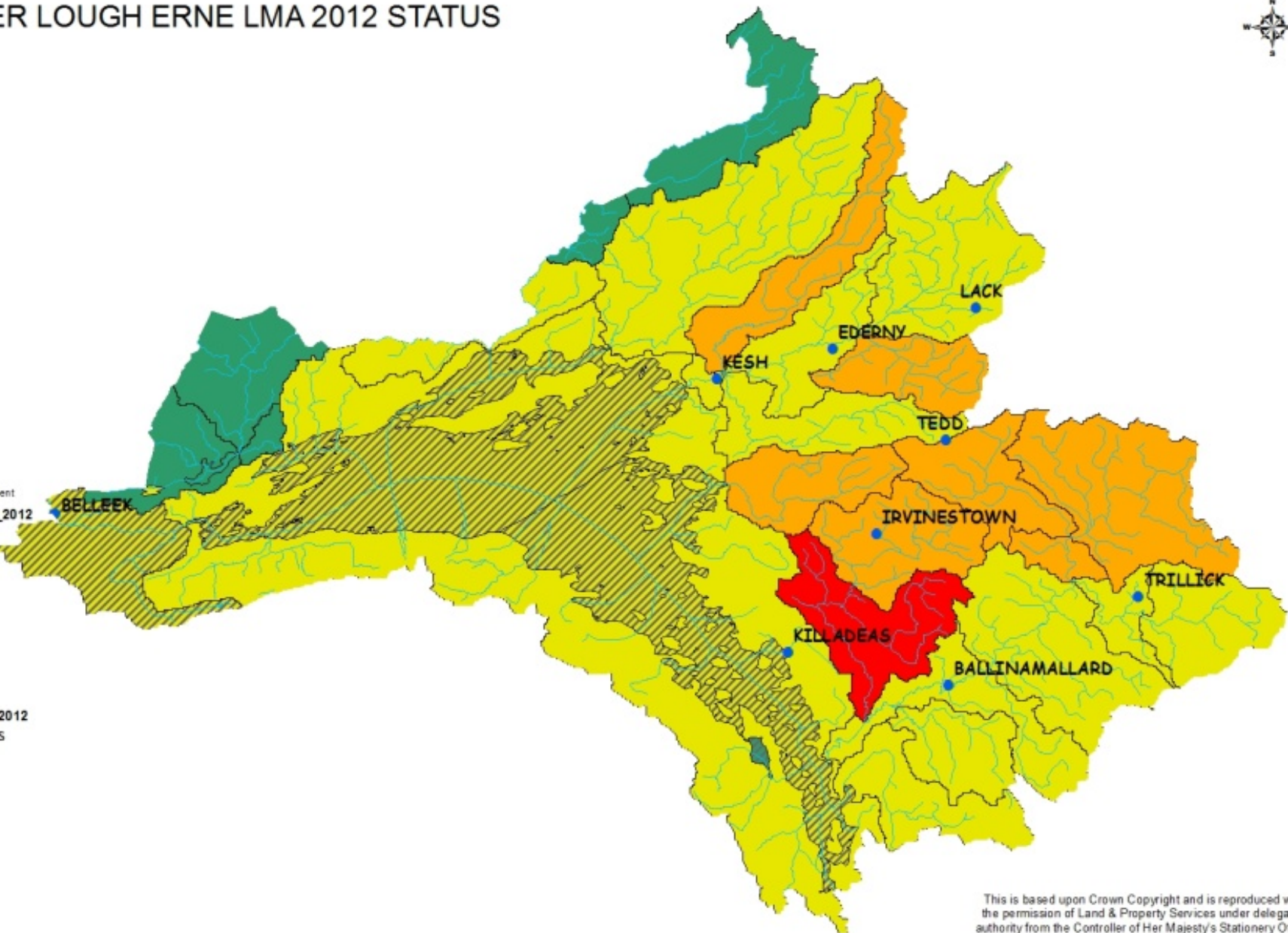
This is based upon Crown Copyright and is reproduced with the permission of Land & Property Services under delegated authority from the Controller of Her Majesty's Stationary Office.
© Crown copyright and database right 2013 EMOU206 2

Unauthorised reproduction infringes © Crown copyright and may lead to prosecution or civil proceedings

LOWER LOUGH ERNE LMA 2012 STATUS



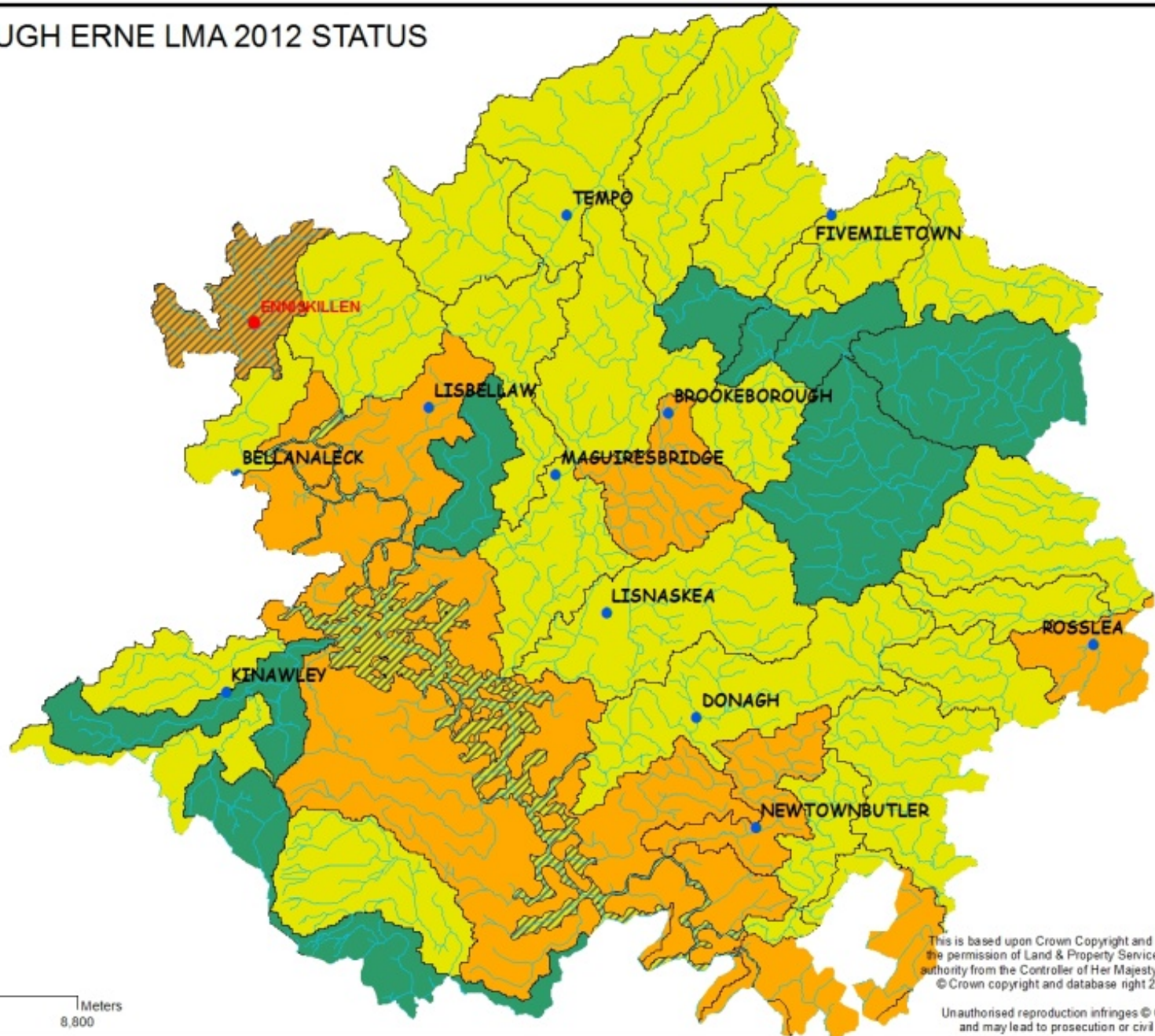
- Town
- RiverSegment
- Lake_Status_2012**
- OVERALL_EC
- Good
- Moderate
- Poor
- Bad
- GEP
- MEP
- PEP
- BEP
- River Status 2012**
- OVER_STATUS
- Null
- High
- Good
- Moderate
- Poor
- Bad
- MEP
- PEP
- BEP



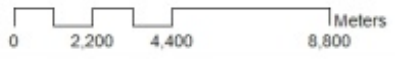
This is based upon Crown Copyright and is reproduced with the permission of Land & Property Services under delegated authority from the Controller of Her Majesty's Stationery Office, © Crown copyright and database right 2013 EMOU206 2

Unauthorised reproduction infringes © Crown copyright and may lead to prosecution or civil proceedings

UPPER LOUGH ERNE LMA 2012 STATUS



- Town
 - City
 - RiverSegment
- Lake_Status_2012**
- OVERALL_EC**
- Good
 - Moderate
 - Poor
 - Bad
 - GEP
 - MEP
 - PEP
 - BEP
- River Status 2012**
- OVER_STATUS**
- Null
 - High
 - Good
 - Moderate
 - Poor
 - Bad
 - MEP
 - PEP
 - BEP



This is based upon Crown Copyright and is reproduced with the permission of Land & Property Services under delegated authority from the Controller of Her Majesty's Stationery Office.
© Crown copyright and database right 2013 EMOU206 2

Unauthorised reproduction infringes © Crown copyright and may lead to prosecution or civil proceedings

Flavour of Fermanagh

- LMA plans – developed and implementing
- River restoration projects
- River walks
- Marl lakes Crayfish reintroduction
- Ballinamallard invasives project
- Education projects - St Eugenes STEM
- Dissolved Oxygen investigations
- Rivers Trust support

Targeted river walks

In Arney and Sillees catchments:

- Drumharriff
- Killycat
- Lisblake
- Blunnick

Bank erosion



Potential pollution sources



Litter and blockages



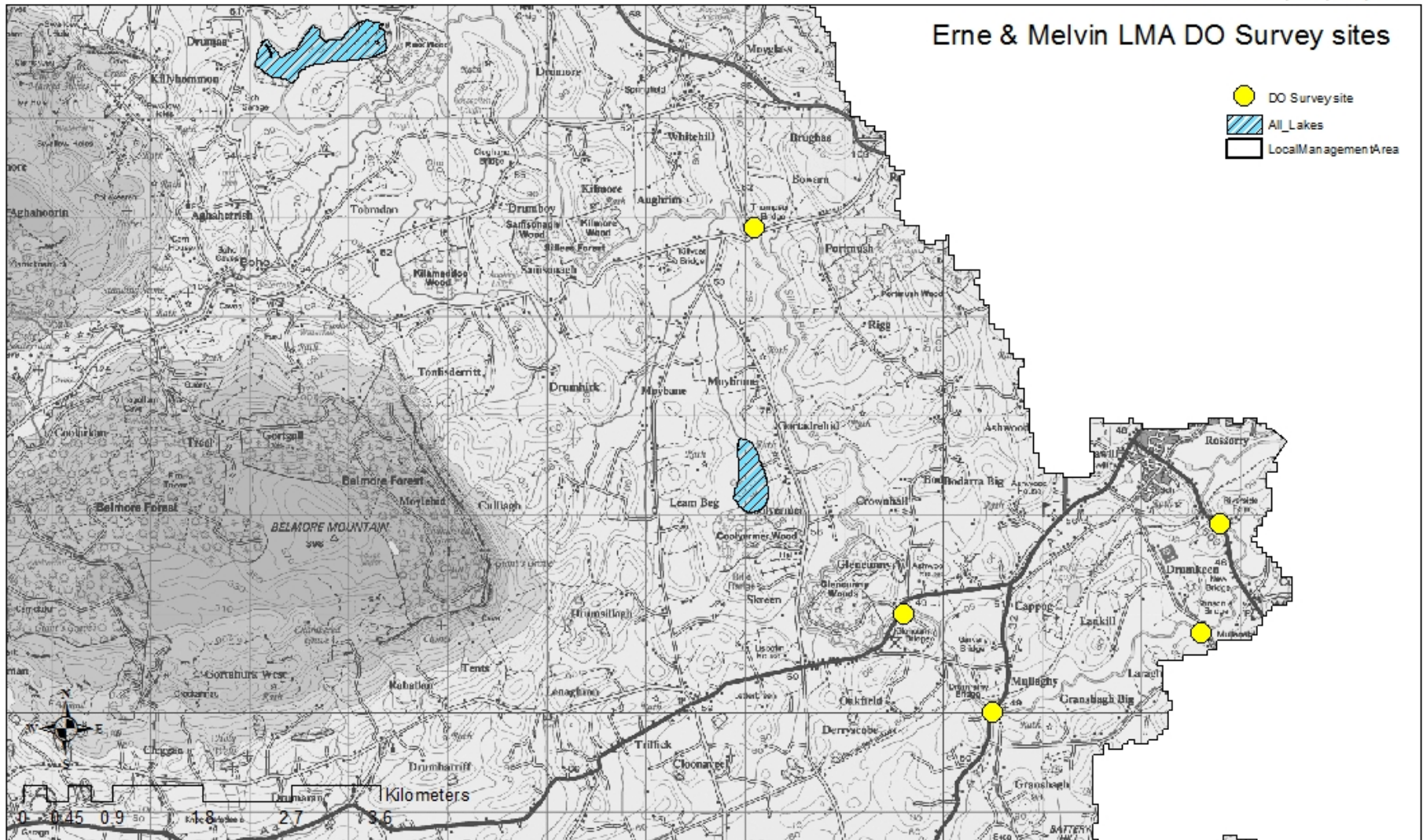
Poor practices



Dissolved Oxygen

- Targeted areas of previous low DO's
- Monthly survey in Sillees and Arney systems
- One off survey in other low DO water bodies

Erne & Melvin LMA DO Survey sites

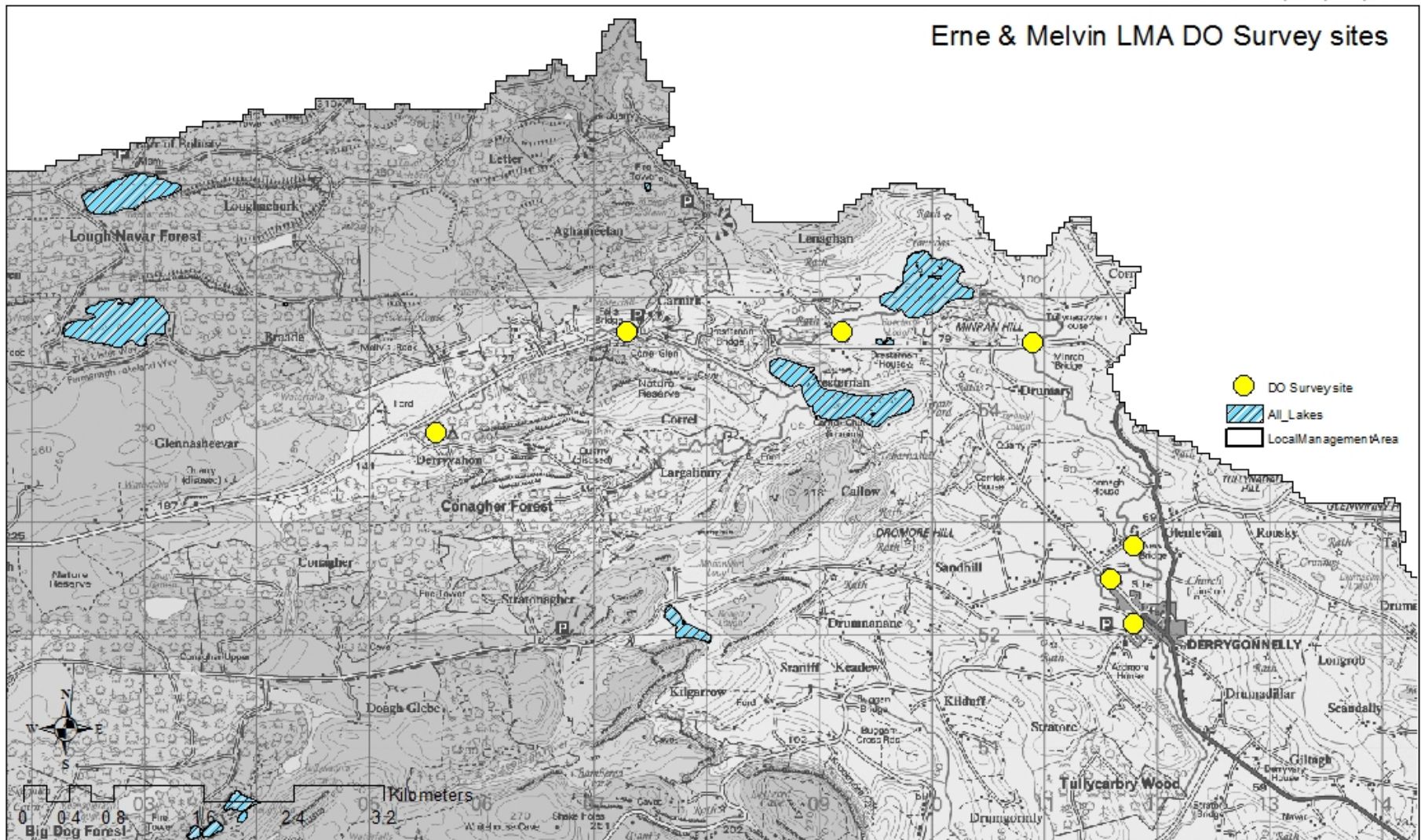


Title: NI Basemap LMA03 2012 **Description:** Erne & Melvin LMA
Scale: 1:51,280
Drawn by: 1003242
Date: 30 May 2013

This is based upon Crown Copyright and is reproduced with the permission of Land & Property Services under delegated authority from the Controller of Her Majesty's Stationery Office, © Crown copyright and database right 2013 EMOU206.2



Erne & Melvin LMA DO Survey sites



Title: **NI Basemap LMA03 2012**

Description:

Scale: **1:45,108**

Erne & Melvin LMA

Drawn by: **1003242**

Date: **30 May 2013**

This is based upon Crown Copyright and is reproduced with the permission of Land & Property Services under delegated authority from the Controller of Her Majesty's Stationery Office, © Crown copyright and database right 2013 EMOU206.2

Unauthorised reproduction infringes © Crown copyright and may lead to prosecution or civil proceedings

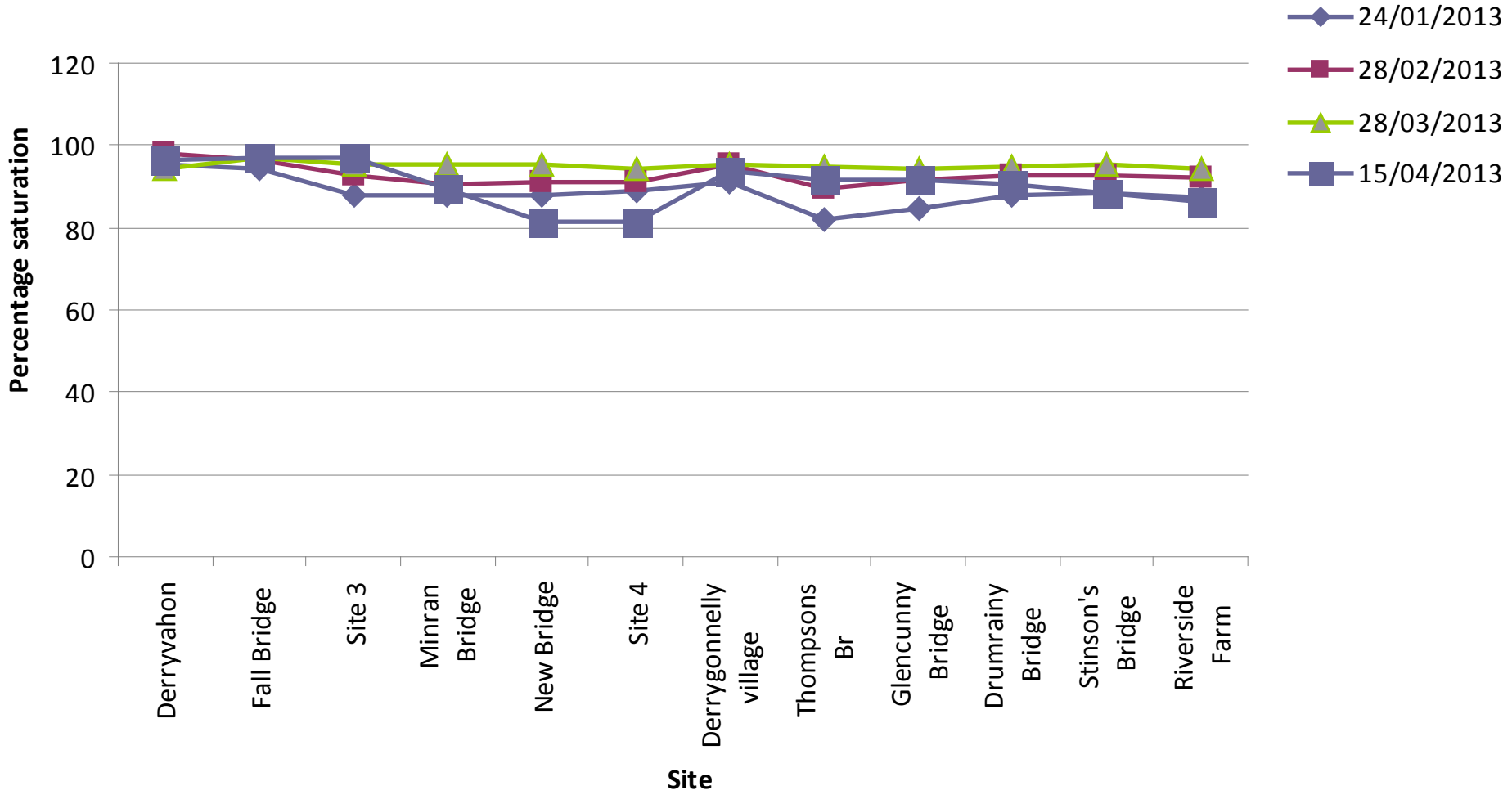


An Agency within the Department of the
Environment
www.doeni.gov.uk



NIEA Northern Ireland
Environment
Agency
www.niea.gov.uk/niea

DO sequence



Pollution hotline signs

- 12 in Lower Lough Erne
- 12 in Upper Lough Erne
- 12 to be placed in Melvin and Arney
- Open to suggestion/offers to place signs



Working Together

**Consultation on Timetable
and
Work Programme
for
Development of the Second
River Basin Management
Plans
2015-2021**

December 2012

**Delivering the programme of measures in the
Northern Ireland River Basin Management Plans**

**A progress report for the North Western, Neagh Bann and North
Eastern River Basin Districts 2012**



**Timetable and consultation on
second cycle RBMPs (22 Dec 2012)**

Next Steps.....

**Significant water management issues (SWMIs) consultation for
second cycle RBMPs (December 2013 to June 2014)**

Our aim is to protect, conserve and promote the natural environment and built heritage for the benefit of present and future generations.



Thanks for your attention.

Next meeting 7 November