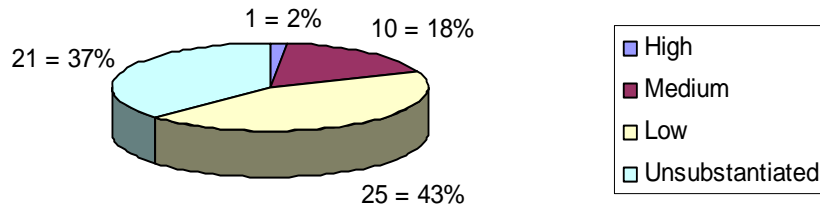


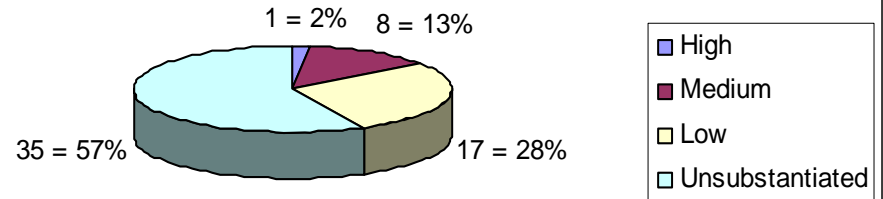
# Area Pollution Update

Catchment Management Meeting – Clonoe 23 May 2012

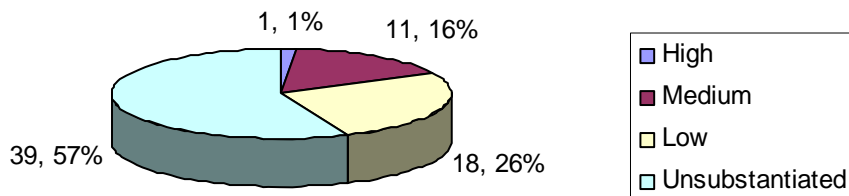
### Pollution Incidents in the Ballinderry Catchment, 2006



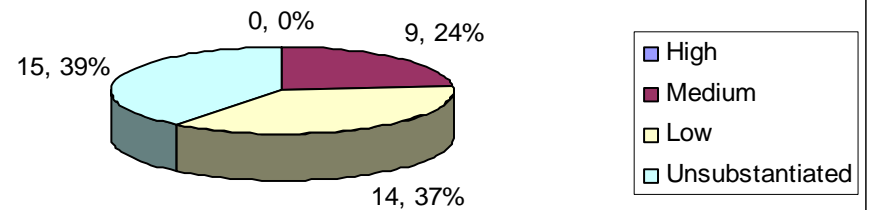
### Pollution Incidents in the Ballinderry Catchment, 2007



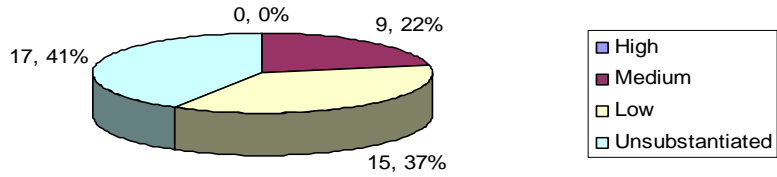
### Pollution Incidents in the Ballinderry Catchment, 2008



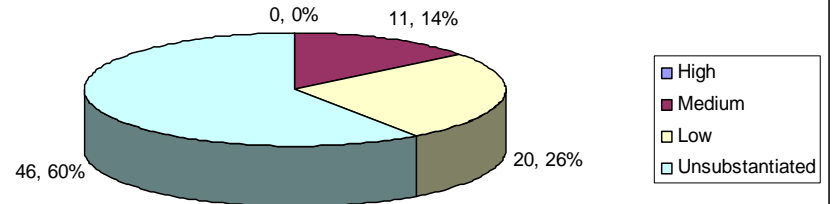
### Pollution Incidents in the Ballinderry Catchment, 2009



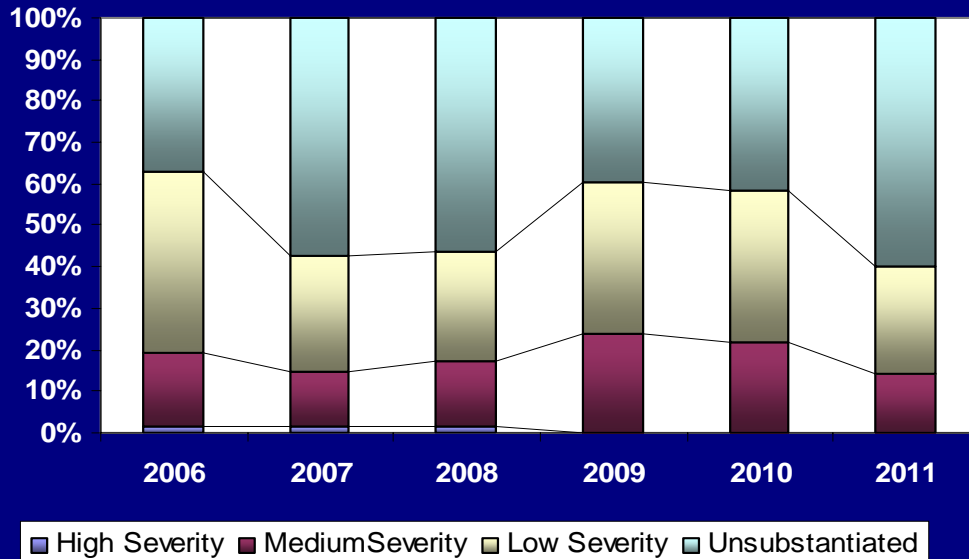
**Pollution Incidents in the Ballinderry Catchment, 2010**



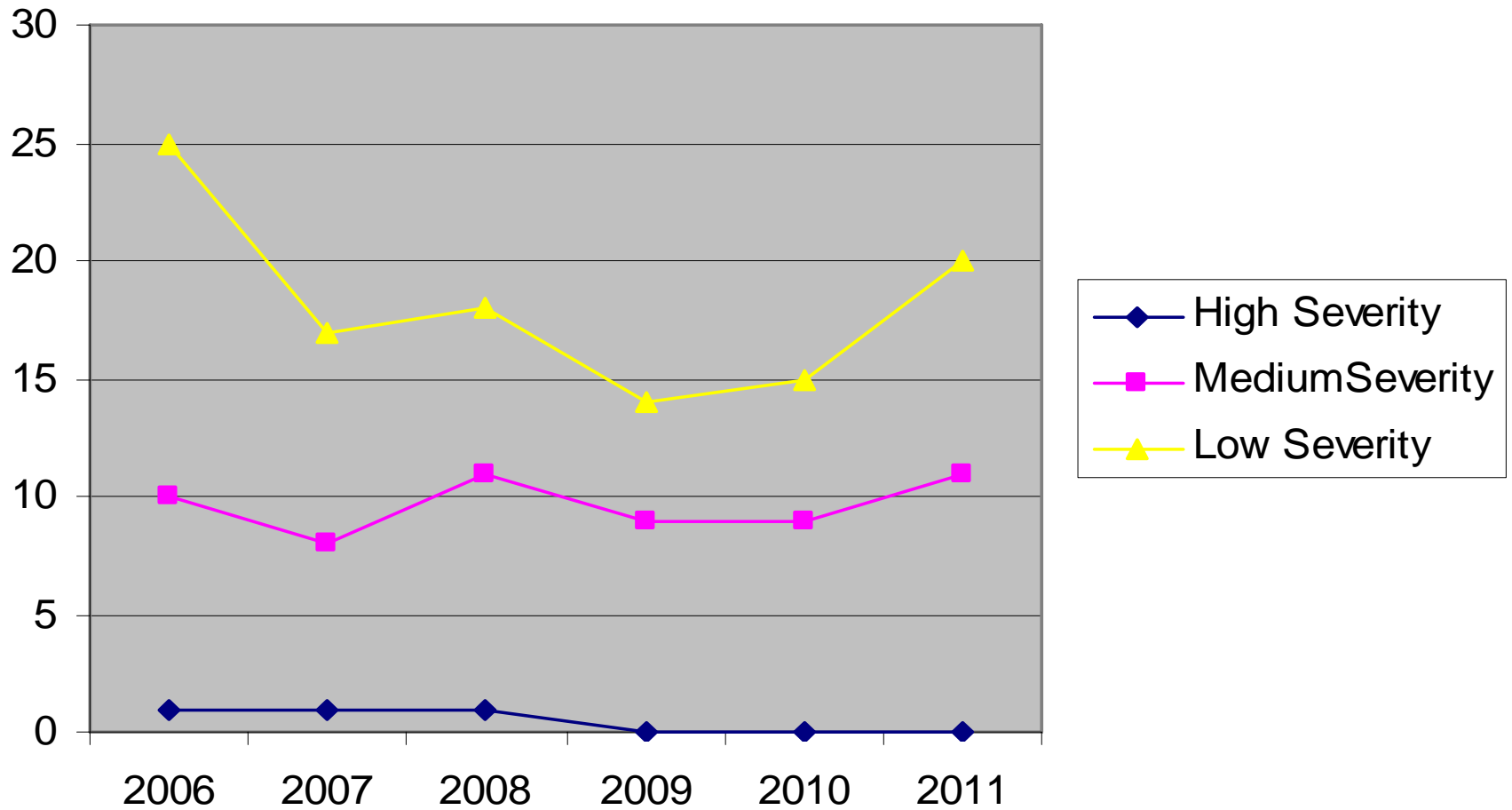
**Pollution Incidents in the Ballinderry Catchment, 2011**



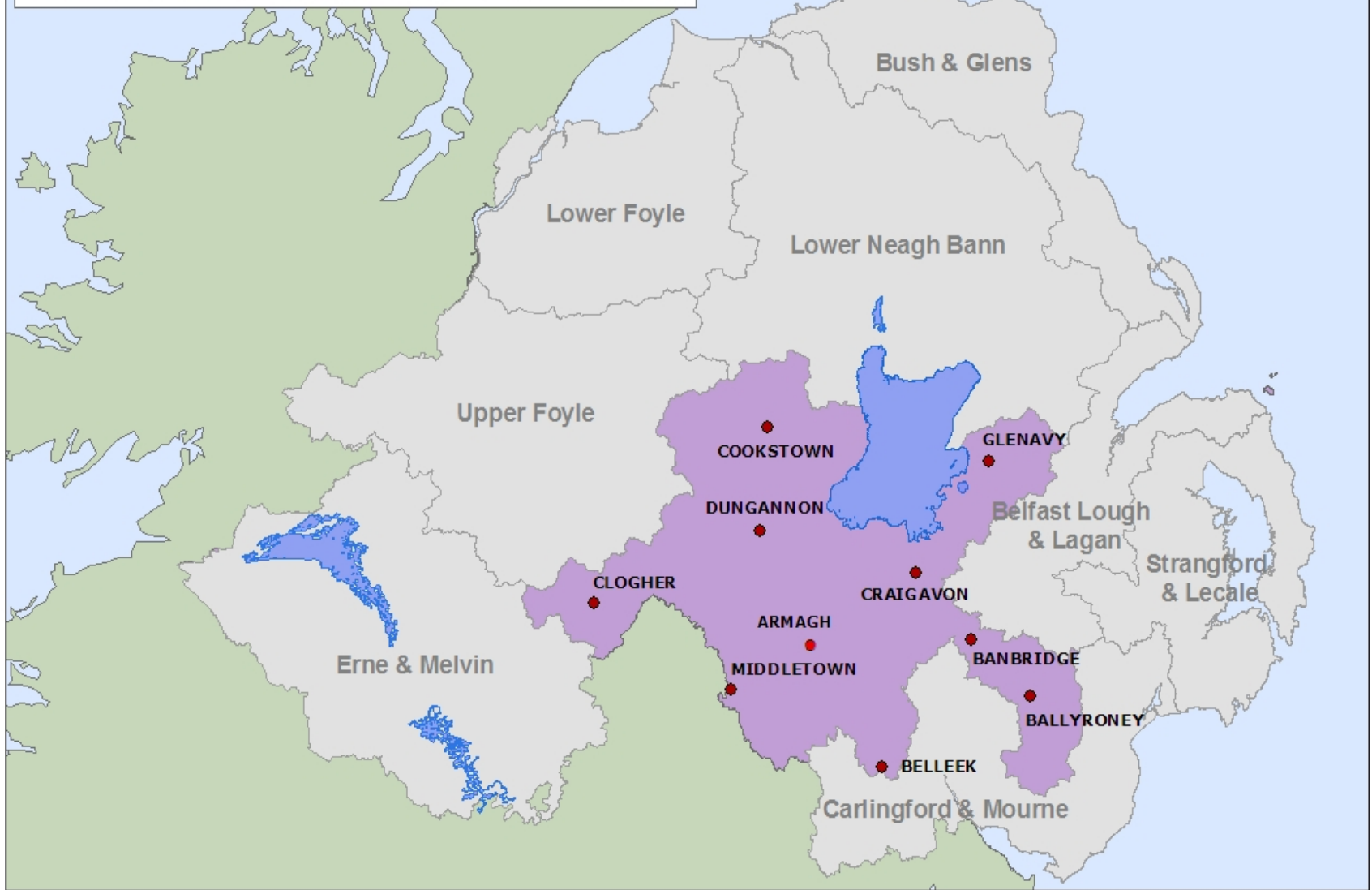
**Pollution Incidents in the Ballinderry Catchment, 2006 - 2011**



## Pollution Incidents in the Ballinderry Catchment, 2006 - 2011



# UPPER NEAGH BANN CATCHMENT STAKEHOLDER GROUP



# Incidents by severity, 07/11/11 – 14/05/12

| Area         | NPF            | Low             | Med            | High         | Total            |
|--------------|----------------|-----------------|----------------|--------------|------------------|
| Glenavy      | 4 (3)          | 8 (6)           | 1 (1)          | 0 (0)        | 13 (10)          |
| U Bann       | 22 (25)        | 36 (28)         | 12 (10)        | 0 (1)        | 70 (64)          |
| B'water      | 21 (27)        | 53 (32)         | 19 (9)         | 0 (1)        | 93 (69)          |
| B'derry      | 10 (18)        | 20 (13)         | 10 (1)         | 0 (0)        | 40 (32)          |
| <b>Total</b> | <b>57 (73)</b> | <b>117 (79)</b> | <b>42 (21)</b> | <b>0 (2)</b> | <b>216 (175)</b> |

# Low Incidents by source, 07/11/11 – 14/05/12

| Area/<br>Source | BWater  | Glenavy | U Bann  | BDerry  | Total    |
|-----------------|---------|---------|---------|---------|----------|
| Agriculture     | 16 (13) | 0 (1)   | 12 (5)  | 9 (1)   | 37 (20)  |
| Domestic        | 17 (10) | 2 (1)   | 7 (4)   | 2 (5)   | 28 (20)  |
| Industrial      | 11 (3)  | 1 (1)   | 1 (14)  | 2 (2)   | 15 (20)  |
| NIWL            | 2 (2)   | 3 (0)   | 4 (5)   | 7 (4)   | 16 (11)  |
| Other           | 7 (4)   | 2 (3)   | 12 (0)  | 0 (1)   | 21 (8)   |
| Total           | 53 (32) | 8 (6)   | 36 (28) | 20 (13) | 117 (79) |

# Medium Incidents by source, 07/11/11 – 14/05/12

| Area/<br>Source | BWater | Glenavy | U Bann  | BDerry | Total   |
|-----------------|--------|---------|---------|--------|---------|
| Agriculture     | 11 (7) | 0 (1)   | 9 (5)   | 6 (0)  | 26 (13) |
| Domestic        | 1 (0)  | 0 (0)   | 0 (0)   | 0 (0)  | 1 (0)   |
| Industrial      | 6 (1)  | 0 (0)   | 3 (2)   | 3 (1)  | 12 (4)  |
| NIWL            | 0 (0)  | 0 (0)   | 0 (3)   | 0 (0)  | 0 (3)   |
| Other           | 1 (1)  | 1 (0)   | 0 (0)   | 1 (0)  | 3 (1)   |
| Total           | 19 (9) | 1 (1)   | 12 (10) | 10 (1) | 42 (21) |



- On Call response 24hrs
- Freephone 0800 807060

Our aim is to protect, conserve  
and promote our natural and built  
environment for the benefit of  
present and future generations.

