

Upper Neagh Bann Catchment Stakeholder Group Catchment Management Update

Aleathea Brown

Actions from Previous CSG Meeting

<p>Action 1 NIEA to compare trends in medium severity pollution incidents between the Upper Neagh Bann CSG Area with other CSG Areas.</p>	<p>Regional Manager Ian Needham will pick up on this during his Regional Update.</p>
<p>Action 2 Rivers Agency to review if there is a need for the removal of any major blockages in the Blackwater Project Area.</p>	<p>Rivers Agency The Area office is commencing a programme of tree management on the Blackwater, on a reach by reach basis, and prioritising by work need.</p>
<p>Action 3 Rivers Agency to re-examine issue of fallen trees and potential tree blockages upstream from TM fish farm outside Coalisland.</p>	<p>Rivers Agency Rivers Agency have stated they will address the fallen tree issue. The Area Office is contacting the owner about the issue and if required will programme works for the coming season.</p>


Upper Neagh Bann Catchment Stakeholder Group

Ballinderry LMA

Lough Neagh

Blackwater LMA

Upper Bann
LMA

 Upper Bann LMA

NIEA Northern Ireland
Environment
www.niea.gov.uk Agency



- **Charities established to look after *a whole river* catchment or area with a number of waterbodies.**
- **'Wet feet' organisations**
- **The Development Officer can help with:**
 - **Start-up advice and support**
 - **Start-up funding**
 - **Documentation**
 - **Technical support**
 - **Routes into national networks (stakeholder groups)**
 - **Help with employment, governance etc**
 - **Regular news, meetings and seminars**

Contact

Mark Horton

The Rivers Trust
c/o Ballinderry River Enhancement
Association
231a Orritor Road
Cookstown
Co. Tyrone
BT80 9ND

Tel: 028 867 61515

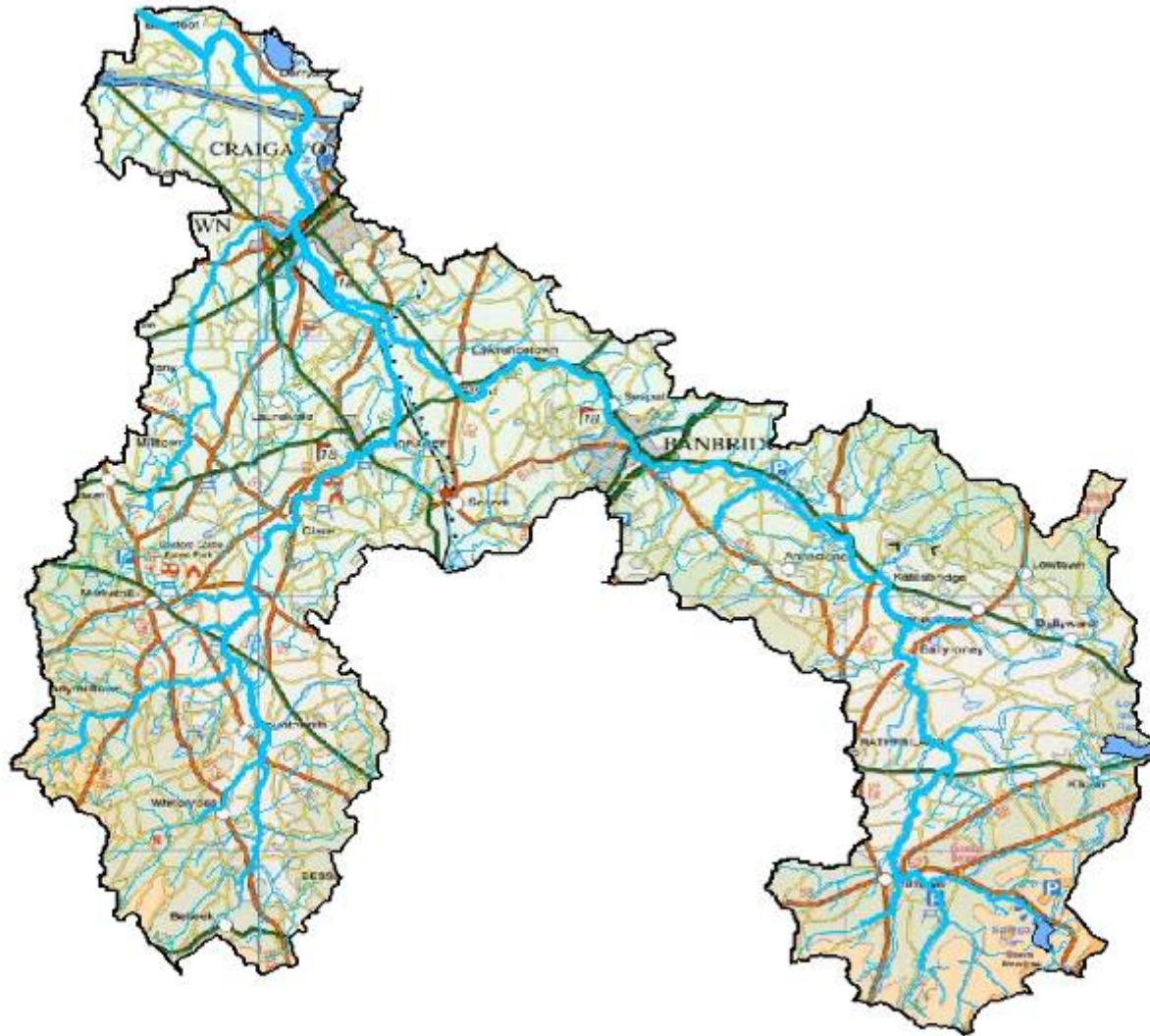
E-mail: mark@theriverstrust.org

"I am happy to come and meet with your club or group to talk about forming a trust in your river catchment"

A woman with blonde hair, wearing a white long-sleeved shirt and dark trousers, is sitting on a pebbly bank on the left side of the image, looking towards a river. The river flows from the foreground towards a stone bridge with three arches in the background. The bridge is surrounded by lush green trees and foliage. The sky is clear and blue. The overall scene is peaceful and scenic.

WATER QUALITY IMPROVEMENT GRANT SCHEME

Upper Bann Local Management Area



25 river water bodies
3 lake water bodies
3 groundwater bodies

Main Rivers:
Upper Bann River
Cusher River

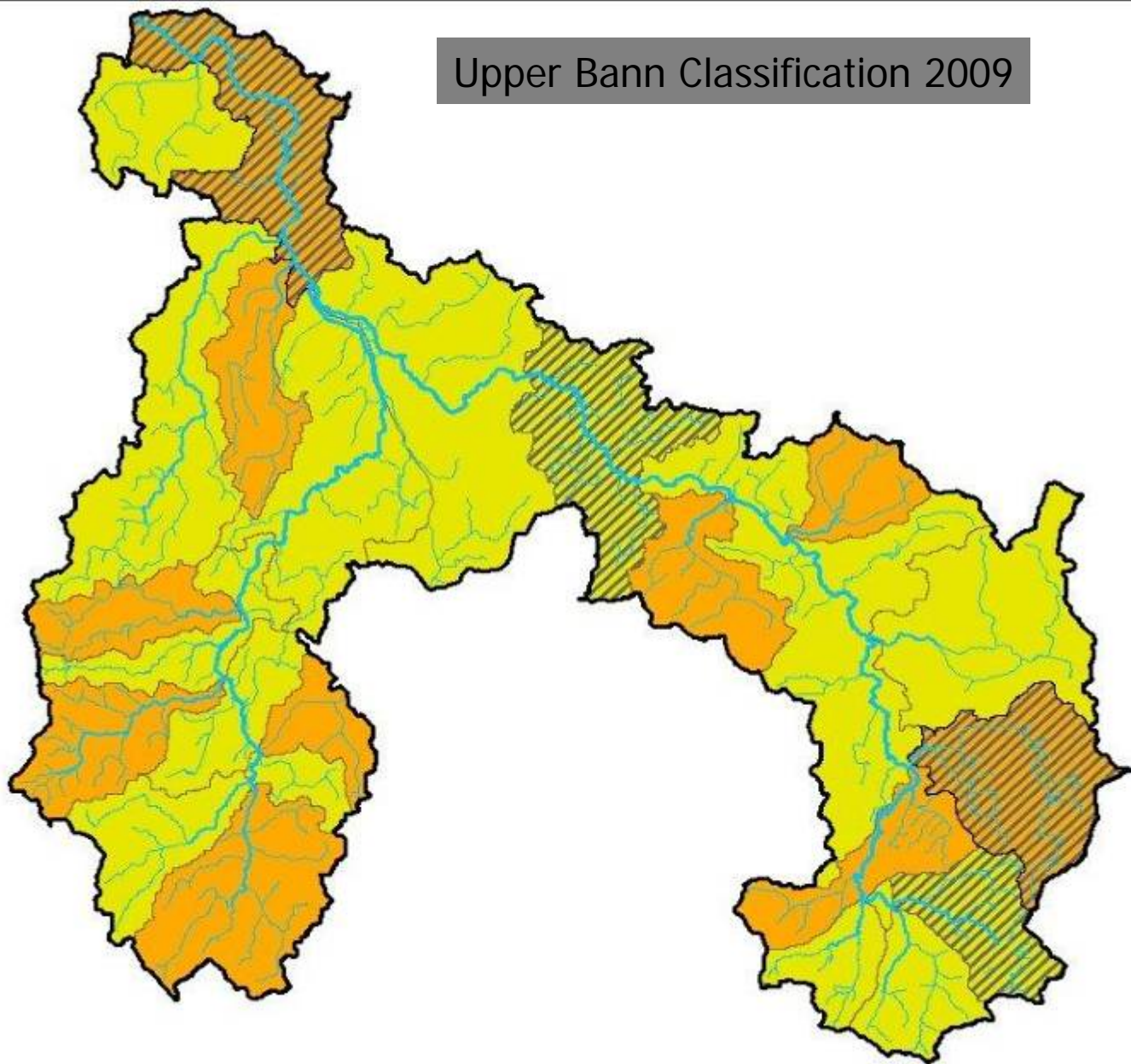
Main Towns:
Craigavon
Banbridge

Main land use:
Agriculture (improved
grassland, arable
horticulture) and forestry

Upper Bann Classification 2009

Legend 2009

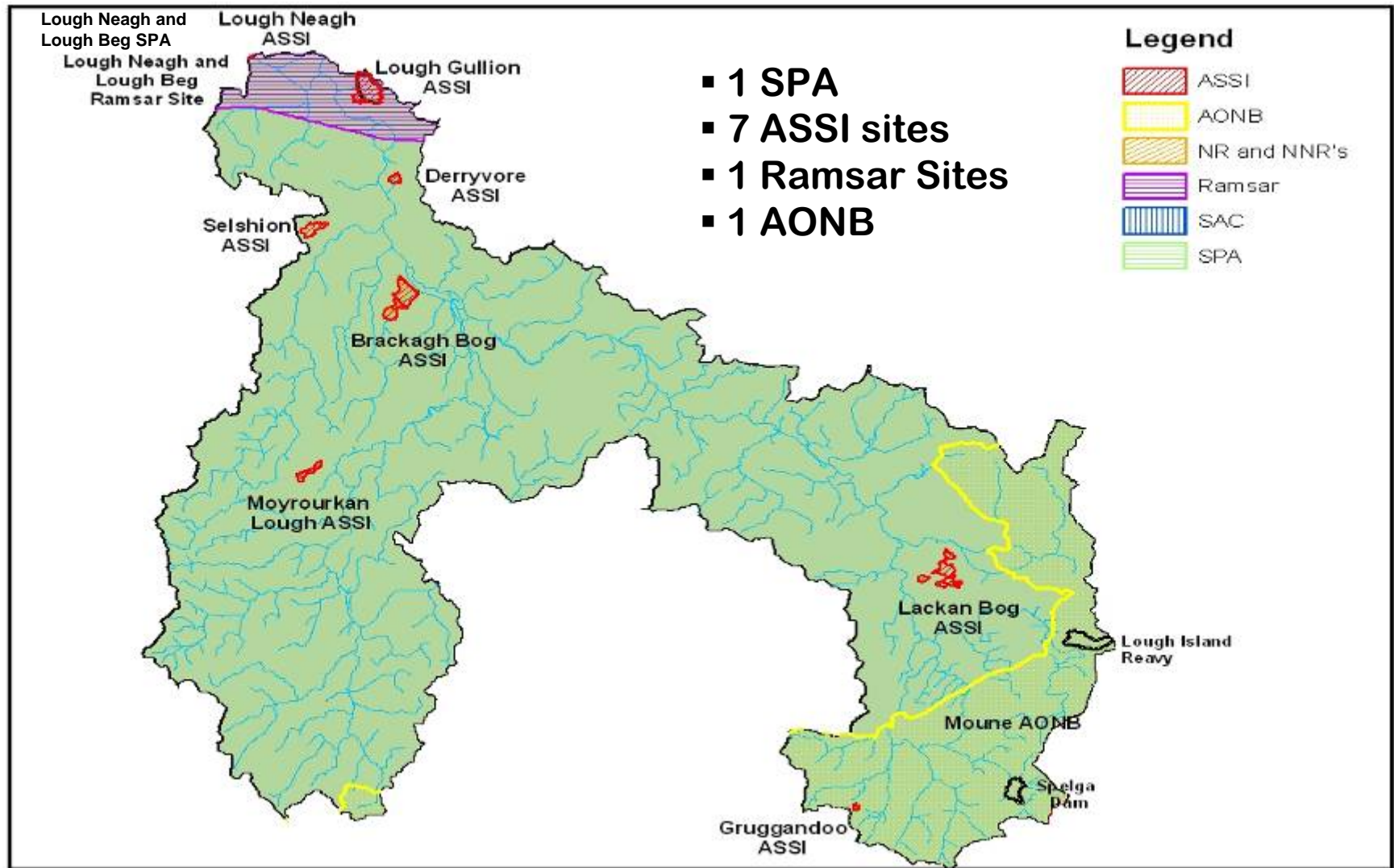
- Upper Bann
- High
- Good
- Moderate
- Poor
- Bad
- GEP
- MEP



Heavily Modified Water Bodies

- 6 HMWB's
- Spelga Dam and
- River Bann Upper
Designated as Drinking Water Storage
- Lough Island Reavy and
- Muddock River
Designated as Drinking Water Storage
- Upper Bann at Banbridge
Designated as Flood Risk Management
- River Bann Bannfoot
Designated as Flood Risk Management and Navigation

Protected Areas



Upper Bann LMA Action Plan.....

- Action Plan Development has already begun
- Action Plan due to be published March 2013
- Desktop Analysis is complete
- Bi – Lateral Meetings:
 - Local Angling Clubs
 - NIEA Water Quality Inspectors
- Further Investigative Monitoring for River Walks.....

⇒ **ACTION PLAN!**

What can you do to help improve Water Quality?

- Any proposed improvement projects in the area ?
- What local events are planned that could promote water quality issues - Interested Groups?
- What are the local water quality issues?