

# Water Pollution Incidents and Enforcement 2012

Annual Report Data



## **Water Pollution Incidents and Enforcement 2012**

This web based report presents statistics relating to water pollution incidents throughout Northern Ireland investigated by, or on behalf of, the Northern Ireland Environment Agency during 2012. NIEA responded to 1986 reports of water pollution in 2012, a decrease of 6% from 2011. This equates to over 5 investigations per day. NIEA substantiated (confirmed) that 1175 incidents, 59.2% of those reported, had an impact on the water quality of the receiving waterway.

Pollution incidents are classified by Source (where the pollution originates), Category (the type of pollution identified), Cause (why the incident occurred) and Severity (the environmental impact of the pollution).

By Source, in 2012 *Farming* accounted for the largest proportion of substantiated incidents investigated by NIEA (32.3%), followed by Domestic (18.2%), Industry (16.9%) and *Northern Ireland Water Ltd* (15.4%). This is illustrated in Figure 7.

By Category, in 2012 *Sewage* (32.7%), *Agriculture* (32.0%) and *Oil* (15.6%) continued the trend in recent years, accounting for the largest proportion of pollutant types (80.3%) in respect of substantiated incidents. This is also illustrated in Figure 11.

The main Causes of substantiated water pollution incidents during 2012 were Unknown Cause (21.9%) and *Equipment Failure* (16.3%).

A total of 205 High and Medium severity incidents were investigated during 2012. This was a decrease of 18% compared with 2011 figures (250). Farming was responsible for the largest number of High and Medium severity incidents in 2012 accounting for 53.2% (109 incidents). In 2012, NIEA responded to 94.0% of substantiated High and Medium Severity incidents within set time targets.

In 2012, 174 proactive site inspections were carried out by the Pollution Prevention Team. These visits occurred at sites deemed to be at risk of causing water pollution or in relation to specific planned or on-going works in or near waterways.

As of 31 July 2013, for the incidents that occurred during 2012, NIEA has issued 62 warning letters and submitted 34 cases to the Public Prosecution Service (PPS) (formerly the Office of the Director of Public Prosecutions) with a

recommendation for prosecution. To date, 25 of these cases have been heard in court. Other cases are being progressed with a view to submission to PPS with a recommendation for prosecution.

As of 31 July 2013, of the 65 cases submitted to PPS relating to 2011 water pollution incidents, convictions have been secured in 64 of those cases. To date for pollution incidents and consent breaches detected during 2011, the total of fines so far imposed by the courts is £52,150. These fines ranged from £150 to £8,000, with an average fine of £815. Of the 65 cases taken by NIEA under the Water (Northern Ireland) Order 1999, the *Agricultural* discharges Category accounted for 46 (71%), with the remaining 19 (29%) made up of *Breach of Consent*, *Chemical*, *Non Agricultural Waste Discharge*, *Oil*, *Sewage* and *Other* Categories. One further case is being progressed by PPS. 106 Warning Letters were issued for incidents that occurred in 2011.

The **Water Pollution Hotline (0800 80 70 60)**, continues to be promoted by NIEA, and its use has steadily increased since its launch. In 2012, 897 water pollution incidents were reported via the Hotline.

### **Water Pollution Incidents and Enforcement Statistics 2012 – How to Use this Report**

There will be no hardcopy Water Pollution Incidents and Enforcement annual report for 2012. However, this workbook has been produced in order to provide the same datasets as in previous years. For further information, this document may be cross referenced with the existing 2006 Water Pollution Incidents and Enforcement report at [http://www.ni-environment.gov.uk/water/waterpollution/pol\\_respon.htm](http://www.ni-environment.gov.uk/water/waterpollution/pol_respon.htm)

Given the inherent delay between the time that pollution incidents, where prosecution is recommended, occur and subsequent court outcome, this report provides enforcement data for incidents that occurred in 2011 and an update on the situation for incidents that occurred in 2012.

---

A significant number of water pollution incidents attributed to Northern Ireland Water Ltd (NIWL) each year are caused by blockages within the sewerage system. NIWL spends in the region of £1.7 million annually clearing blocked sewers, the majority caused by inappropriate materials such as baby wipes and sanitary items that people flush down their toilet rather than put in the bin. NIWL runs a variety of awareness raising campaigns throughout the year, the latest being the 'Dirty

Dozen', to highlight the twelve most common items which cause blockages. Alongside this campaign, they also raise awareness of the effects of Fat, Oil and Grease (FOG) discharges on the sewers.

The campaign is augmented by the NIWL Education Team who visit a number of schools and community groups throughout the year, highlighting the 'bag it and bin it' and 'FOG' messages. An extensive stakeholder engagement programme also highlights the messages to key stakeholders.

Further information on these 2 NIWL campaigns can be found at:

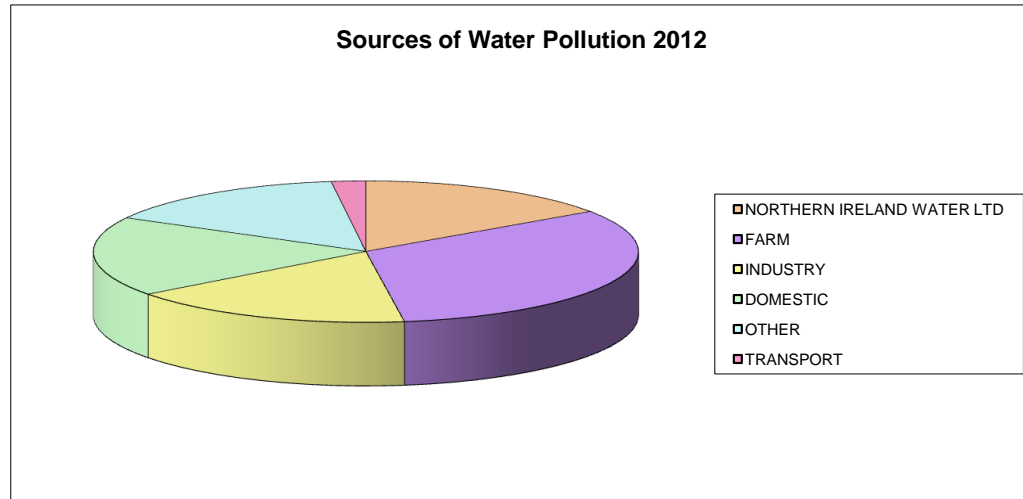
<http://www.niwater.com/bag-it-and-bin-it/>

and,

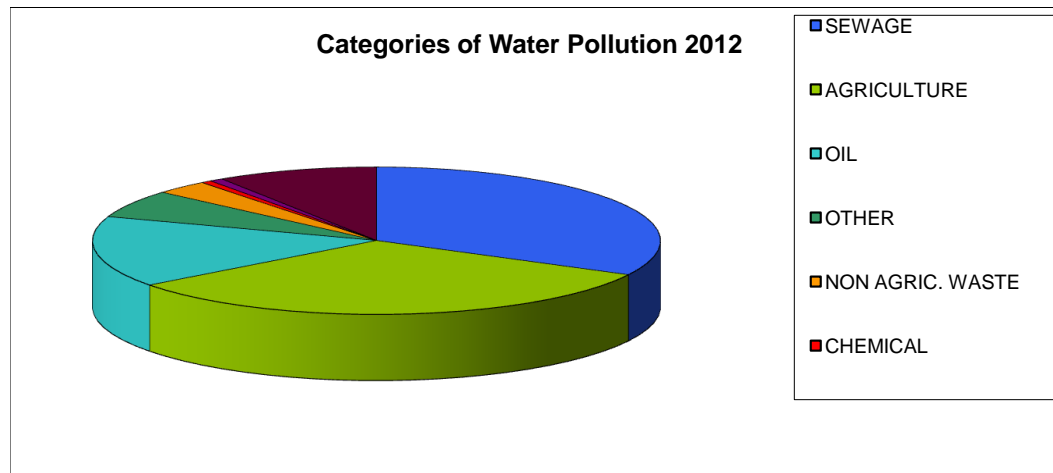
<http://www.niwater.com/fats-oil-and-grease-fog/>

<b>Water Pollution Incidents and Enforcement 2012</b>		
<b>Click "Worksheet Number" on Left to View - Click "Return to Index" to Return to this Page</b>		
<b>Worksheet Number</b>		<b>Description</b>
<a href="#">2012_1</a>	<b>Figure A</b>	Distribution of Substantiated Pollution Incidents by Source and Category in 2012
<a href="#">2012_2</a>	<b>Table 1 and Figure 1</b>	Reports of Water Pollution Received by NIEA 2001 to 2012 and NIEA Areas for Water Pollution Incident Management
<a href="#">2012_3</a>	<b>Table 2 and Figure 5</b>	Substantiated and Unsubstantiated Water Pollution Incidents 2001 to 2012
<a href="#">2012_4</a>	<b>Figure 6</b>	Regional Distribution of Substantiated Pollution Incidents 2012
<a href="#">2012_5</a>	<b>Table 3 and Figure 7</b>	Sources of Water Pollution 2012
<a href="#">2012_6</a>	<b>Table 4 and Figure 8</b>	Regional Distribution of Pollution Incidents by Source 2012
<a href="#">2012_7</a>	<b>Table 5 and Figure 9</b>	Percentage Change in Pollution Source 2009 to 2012
<a href="#">2012_8</a>	<b>Figure 10</b>	Trend in Pollution Source 2001 to 2012
<a href="#">2012_9</a>	<b>Table 6 and Figure 11</b>	Categories of Water Pollution 2012
<a href="#">2012_10</a>	<b>Table 7 and Figure 12</b>	Regional Distribution of Pollution Incidents by Category 2012
<a href="#">2012_11</a>	<b>Table 8 and Figure 13</b>	Percentage Change in Pollutant Category 2009 to 2012
<a href="#">2012_12</a>	<b>Figure 14</b>	Trend in Pollutant Category 2001 - 2012
<a href="#">2012_13</a>	<b>Table 9 and Figure 15</b>	Cause of Pollution Incidents in 2012
<a href="#">2012_14</a>	<b>Table 10 and Figure 16</b>	Regional Distribution of Pollution Incidents by Cause in 2012
<a href="#">2012_15</a>	<b>Figure 17</b>	Trend in Pollution Incident Cause 2001 to 2012
<a href="#">2012_16</a>	<b>Table 11 and Figure 18</b>	Severity of Pollution Incidents 2012
<a href="#">2012_17</a>	<b>Table 12 and Figure 19</b>	Regional Distribution of Pollution Incidents by Severity in 2012
<a href="#">2012_18</a>	<b>Table 13 and Figure 20</b>	Severity of Pollution Incidents by Source 2012
<a href="#">2012_19</a>	<b>Table 14 and Figure 21</b>	Severity of pollution Incidents by Category 2012
<a href="#">2012_20</a>	<b>Table 15 and Figure 22</b>	Severity of Pollution Incidents by Cause 2012
<a href="#">2012_21</a>	<b>Table 16 and Figure 23</b>	Response Rate to High and Medium Severity Pollution Incidents 2012
<a href="#">2012_22</a>	<b>Table 17 and Figure 24</b>	Response Rate to High and Medium Severity Pollution Incidents 2001 to 2012
<a href="#">2012_23</a>	<b>Table 18 and Figure 25</b>	Sources of Pollution Causing FishKills in 2012
<a href="#">2012_24</a>	<b>Table 19 and Figure 26</b>	Significance of FishKills by Pollutant Source 2012
<a href="#">2012_25</a>	<b>Figure 27</b>	Trend in Pollution Source Causing FishKills 2001 to 2012
<a href="#">2012_26</a>	<b>Table 20</b>	Summary of Cases Referred to PPS for Incidents that Occurred in 2011
<a href="#">2012_27</a>	<b>Table 21</b>	Costs and Fines Imposed under the Water (NI) Order 1999, for Incidents that occurred in 2011 (As at 31/07/2013)
<a href="#">2012_28</a>	<b>Table 22</b>	Water Pollution Prosecution Cases and Warning Letters 2000 to 2011
<a href="#">2012_29</a>	<b>Figure 28</b>	Water Pollution Prosecution Cases and Warning Letters 2000 to 2011
<a href="#">2012_30</a>	<b>Table 23 and Figure 29</b>	Number of Proactive Pollution Prevention Inspections by Sector 2012
<i>(See 2006 Water Pollution Incidents and Enforcement Report for Figures 2 to 4)</i>		

**Figure A: Distribution of Substantiated Pollution Incidents by Source and Category in 2012**



[Return to Index](#)



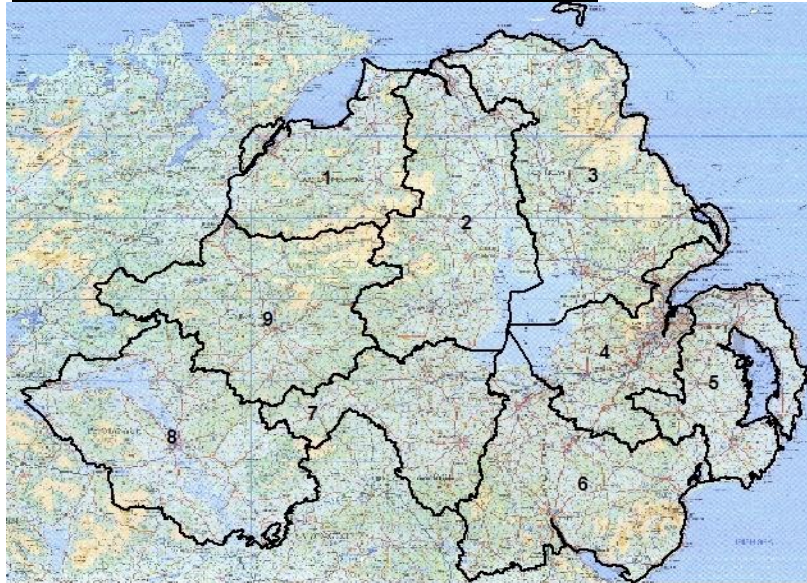
**Table 1: Reports of Water Pollution Received by NIEA 2001 to 2012**

Water pollution reports received by:							
Year	WPH (Normal Hours)	WPH (After Hours)	Total WPH	NIEA direct (Normal Hours)	Regional Offices direct (Normal Hours)	*DCAL IFG / LA direct (Normal Hours)	Total reports received by NIEA
2001	436	279	715	333	1034	452	2534
2002	436	292	728	277	1039	419	2463
2003	476	292	768	358	977	396	2499
2004	552	284	836	324	787	260	2207
2005	641	301	942	265	789	187	2183
2006	651	294	945	237	726	173	2081
2007	625	296	921	186	1135	49	2291
2008	669	281	950	287	1007	0	2244
2009	661	232	893	192	1067	0	2152
2010	659	218	877	159	1044	0	2080
2011	657	194	851	202	1070	0	2123
2012	696	201	897	676	413	0	1986

\*DCAL IFG = DCAL Inland Fisheries Group ; LA = Loughs Agency

[Return to Index](#)

**Figure 1: NIEA Areas for Water Pollution Incident Management**

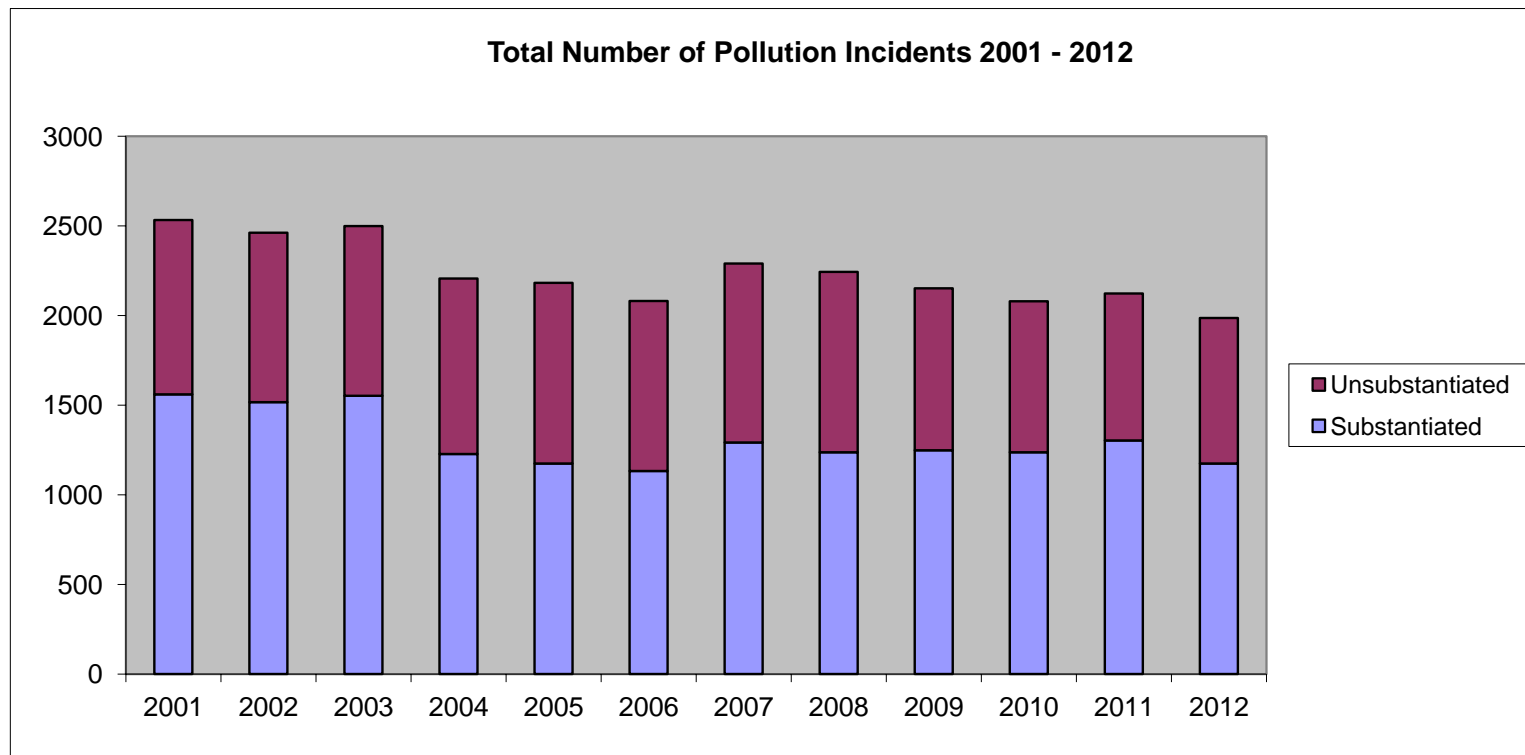


LPS/OSNI Crown Copyright 2012 . OSNI EMOU206.2

**Table 2: Substantiated and Unsubstantiated Water Pollution Incidents 2001 to 2012**

	2001	2002	2003	2004	2005	2006	2007	2008	2009	2010	2011	2012
<b>Substantiated</b>	1561	1517	1552	1227	1174	1133	1292	1237	1248	1237	1303	1175
<b>Unsubstantiated</b>	973	946	947	980	1009	948	999	1007	904	843	820	811
<b>Total</b>	<b>2534</b>	<b>2463</b>	<b>2499</b>	<b>2207</b>	<b>2183</b>	<b>2081</b>	<b>2291</b>	<b>2244</b>	<b>2152</b>	<b>2080</b>	<b>2123</b>	<b>1986</b>

**Figure 5: Total Number of Pollution Incidents Reported 2001 to 2012**



[Return to Index](#)

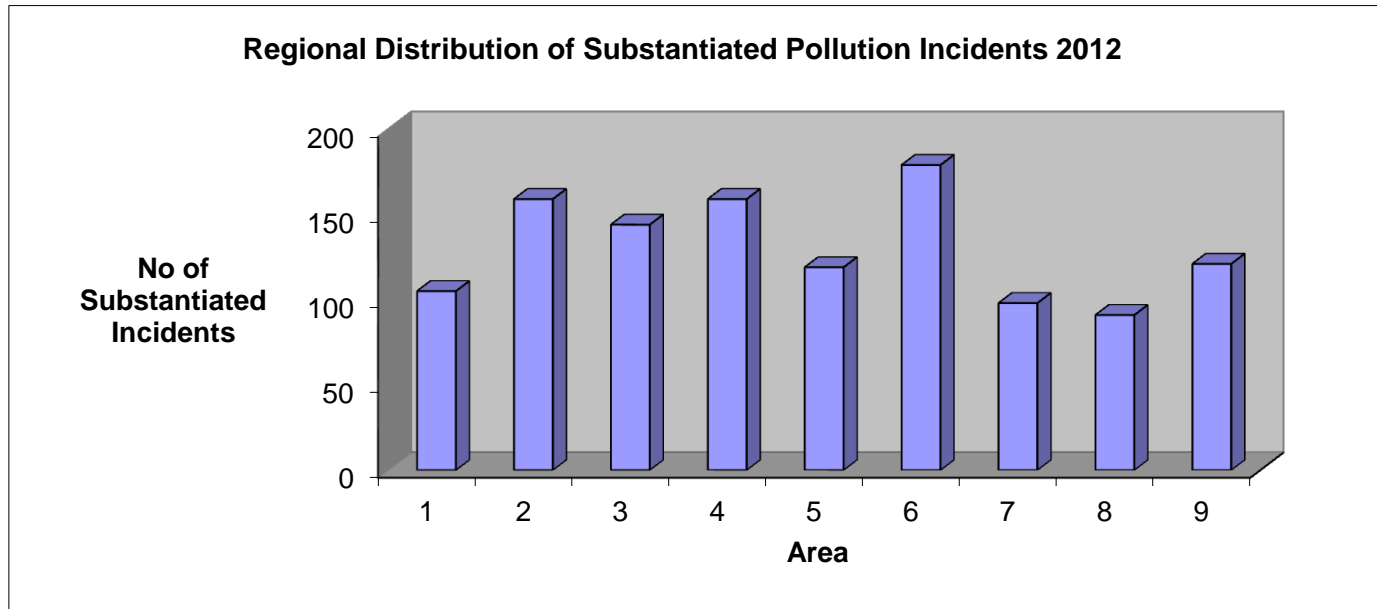


**Regional Distribution of Substantiated Pollution Incidents 2012**

Area	Total substantiated incidents
1	105
2	159
3	144
4	159
5	119
6	179
7	98
8	91
9	121
<b>Total</b>	<b>1175</b>

[Return to Index](#)

**Figure 6: Regional Distribution of Substantiated Pollution Incidents 2012**

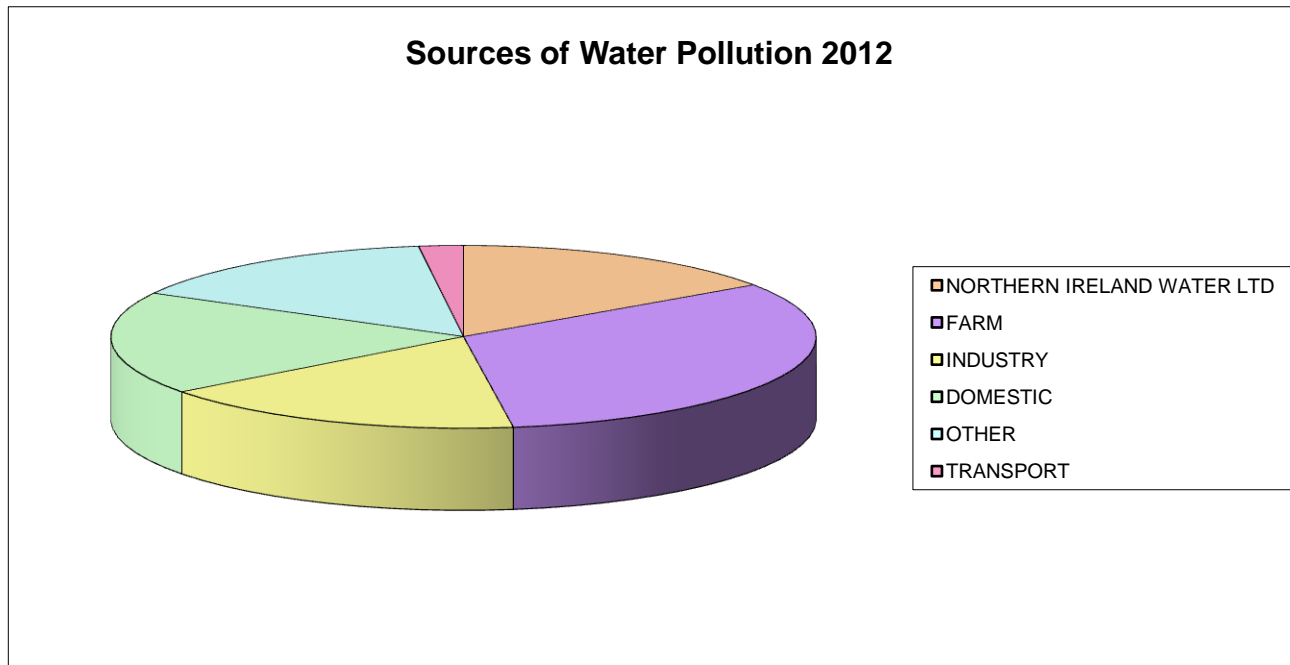


**Table 3: Sources of Water Pollution 2012**

[Return to Index](#)

SOURCE	Total No. of Incidents	As a % of the total
NORTHERN IRELAND WATER LTD	181	15.4%
FARM	380	32.3%
INDUSTRY	199	16.9%
DOMESTIC	214	18.2%
OTHER	177	15.1%
TRANSPORT	24	2.0%
	<b>1175</b>	

**Figure 7: Sources of Water Pollution 2012**

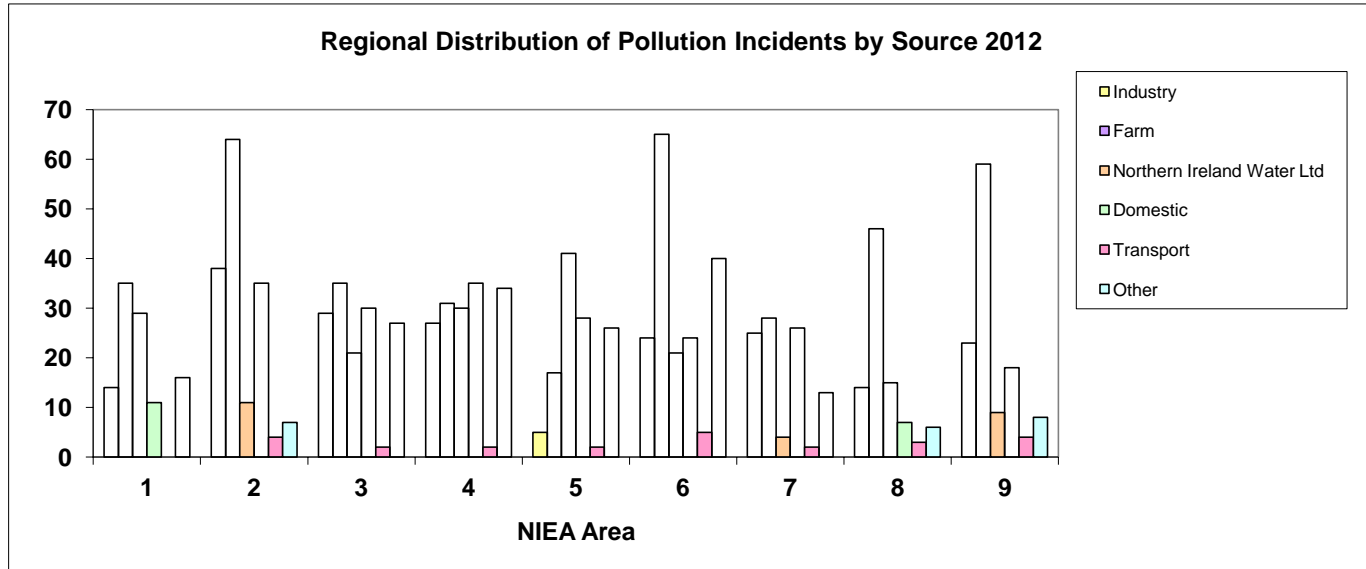


**Table 4: Regional Distribution of Pollution Incidents by Source 2012**

[Return to Index](#)

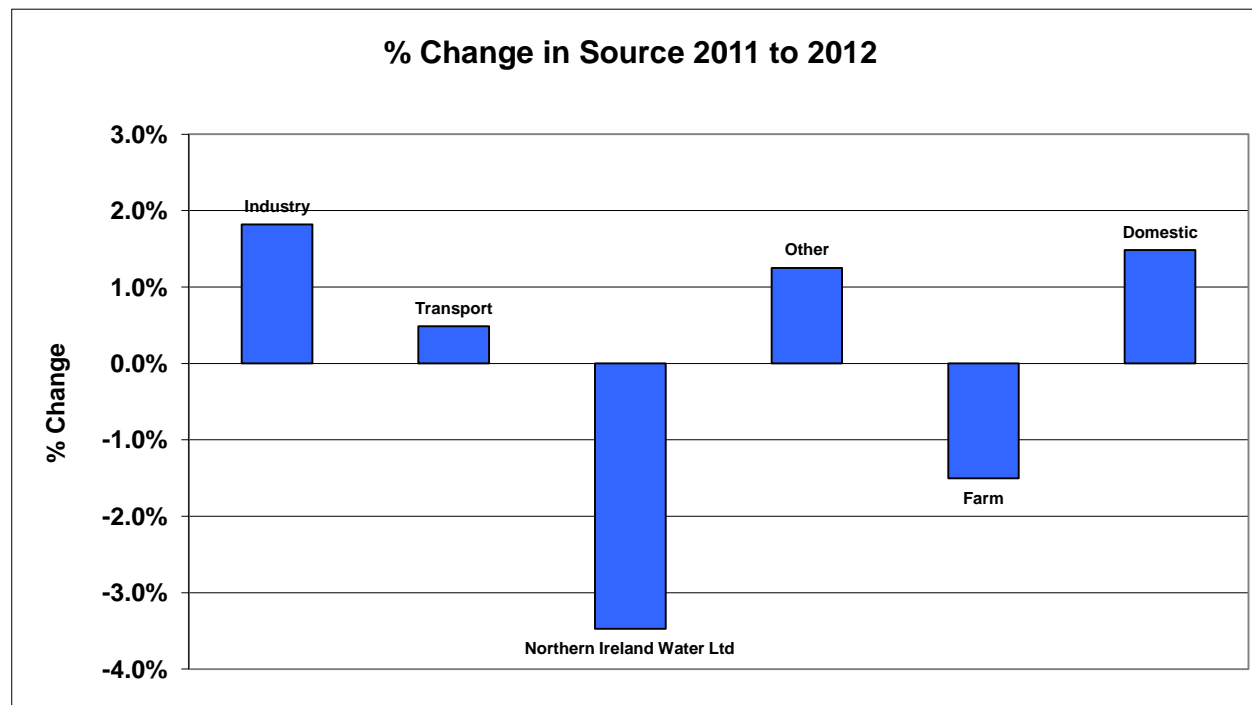
Source							
Area	Industry	Farm	Northern Ireland Water Ltd	Domestic	Transport	Other	Total
1	14	35	29	11	0	16	105
2	38	64	11	35	4	7	159
3	29	35	21	30	2	27	144
4	27	31	30	35	2	34	159
5	5	17	41	28	2	26	119
6	24	65	21	24	5	40	179
7	25	28	4	26	2	13	98
8	14	46	15	7	3	6	91
9	23	59	9	18	4	8	121
<b>Total</b>	<b>199</b>	<b>380</b>	<b>181</b>	<b>214</b>	<b>24</b>	<b>177</b>	<b>1175</b>

**Figure 8: Regional Distribution of Pollution Incidents by Source 2012**



**Table 5: Percentage Change in Pollution Source 2011 to 2012**[Return to Index](#)

Source	2011	2011	2012	2012	% Change
Industry	197	15.1%	199	16.9%	1.8%
Transport	21	1.6%	24	2.1%	0.5%
Northern Ireland Water Ltd	246	18.9%	181	15.4%	-3.5%
Other	180	13.8%	177	15.1%	1.2%
Farm	441	33.8%	380	32.3%	-1.5%
Domestic	218	16.7%	214	18.2%	1.5%
<b>Total</b>	<b>1303</b>		<b>1175</b>		

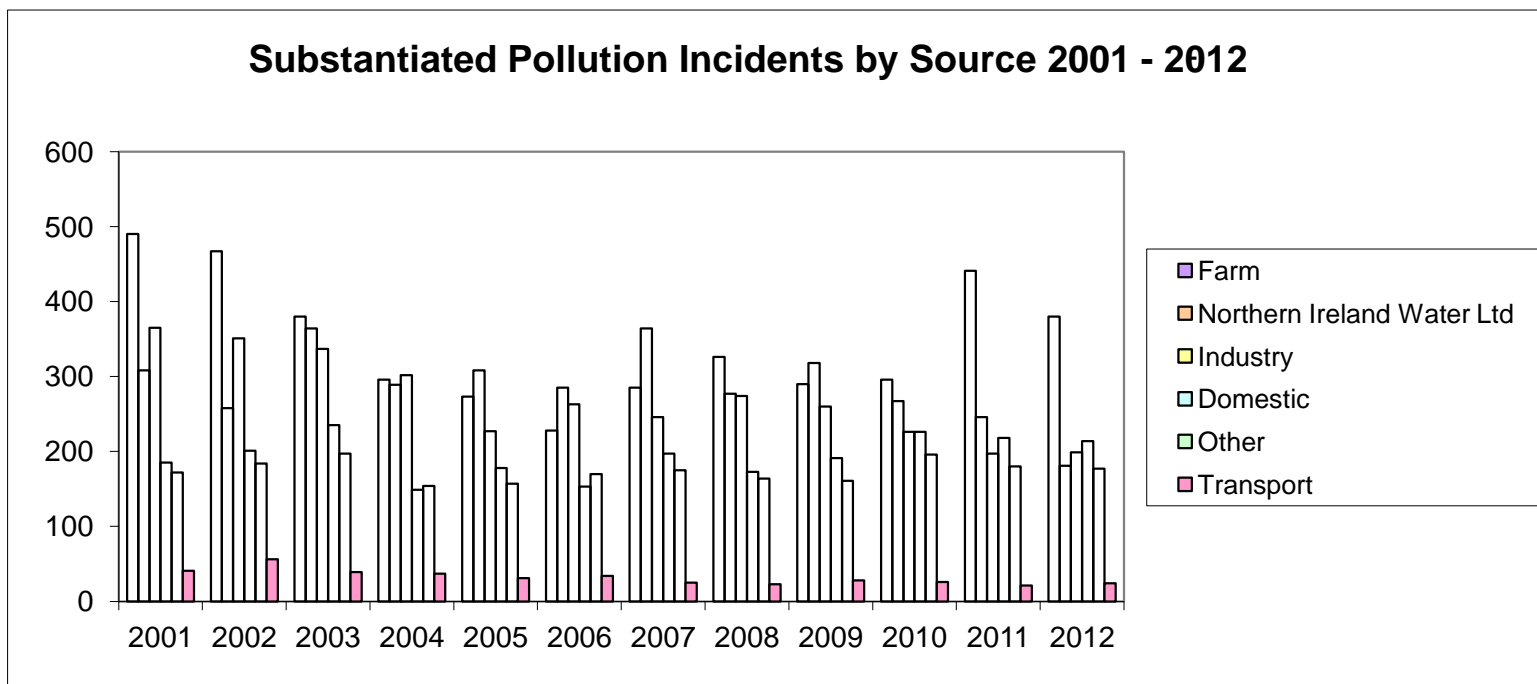
**Figure 9: Percentage Change in Pollution Source 2011 to 2012**

**Trend in Pollution Source 2001 to 2012**

[Return to Index](#)

	2001	2002	2003	2004	2005	2006	2007	2008	2009	2010	2011	2012
<b>Farm</b>	490	467	380	296	273	228	285	326	290	296	441	380
<b>Northern Ireland Water Ltd</b>	308	258	364	289	308	285	364	277	318	267	246	181
<b>Industry</b>	365	351	337	302	227	263	246	274	260	226	197	199
<b>Domestic</b>	185	201	235	149	178	153	197	173	191	226	218	214
<b>Other</b>	172	184	197	154	157	170	175	164	161	196	180	177
<b>Transport</b>	41	56	39	37	31	34	25	23	28	26	21	24
<b>Total</b>	<b>1561</b>	<b>1517</b>	<b>1552</b>	<b>1227</b>	<b>1174</b>	<b>1133</b>	<b>1292</b>	<b>1237</b>	<b>1248</b>	<b>1237</b>	<b>1303</b>	<b>1175</b>

**Figure 10: Trend in Pollution Source 2001 to 2012**



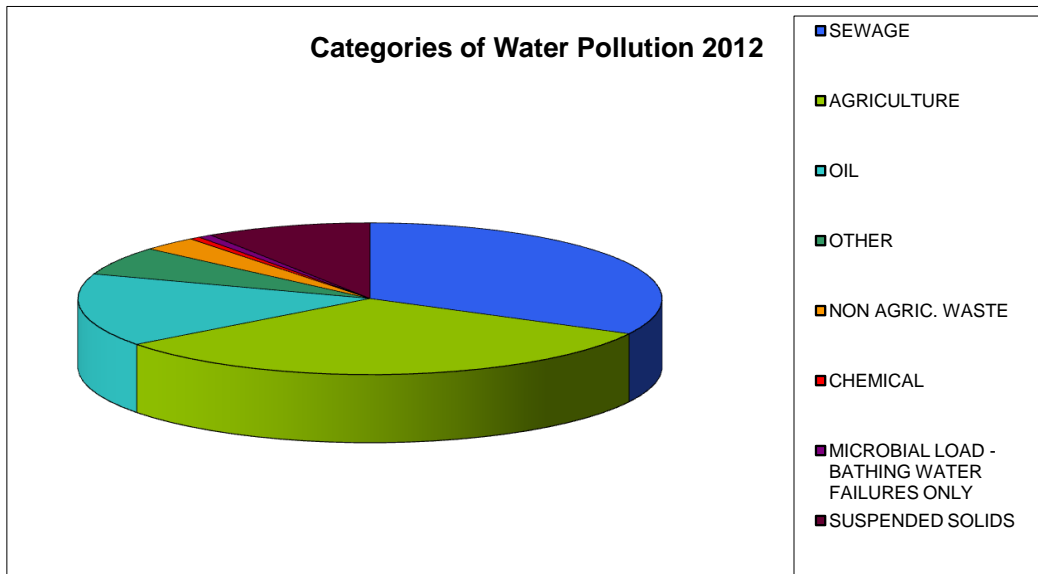
**Table 6: Categories of Water Pollution 2012**

[Return to Index](#)

CATEGORY	Total No. of Incidents	As a % of the total
SEWAGE	384	32.7%
AGRICULTURE	376	32.0%
OIL	183	15.6%
OTHER	72	6.1%
NON AGRIC. WASTE	36	3.1%
CHEMICAL	7	0.6%
MICROBIAL LOAD - BATHING WATER FAILURES ONLY	9	0.8%
SUSPENDED SOLIDS	108	9.2%
<b>Total</b>	<b>1175</b>	<b>100%</b>

?

**Figure 11: Categories of Water Pollution 2012**

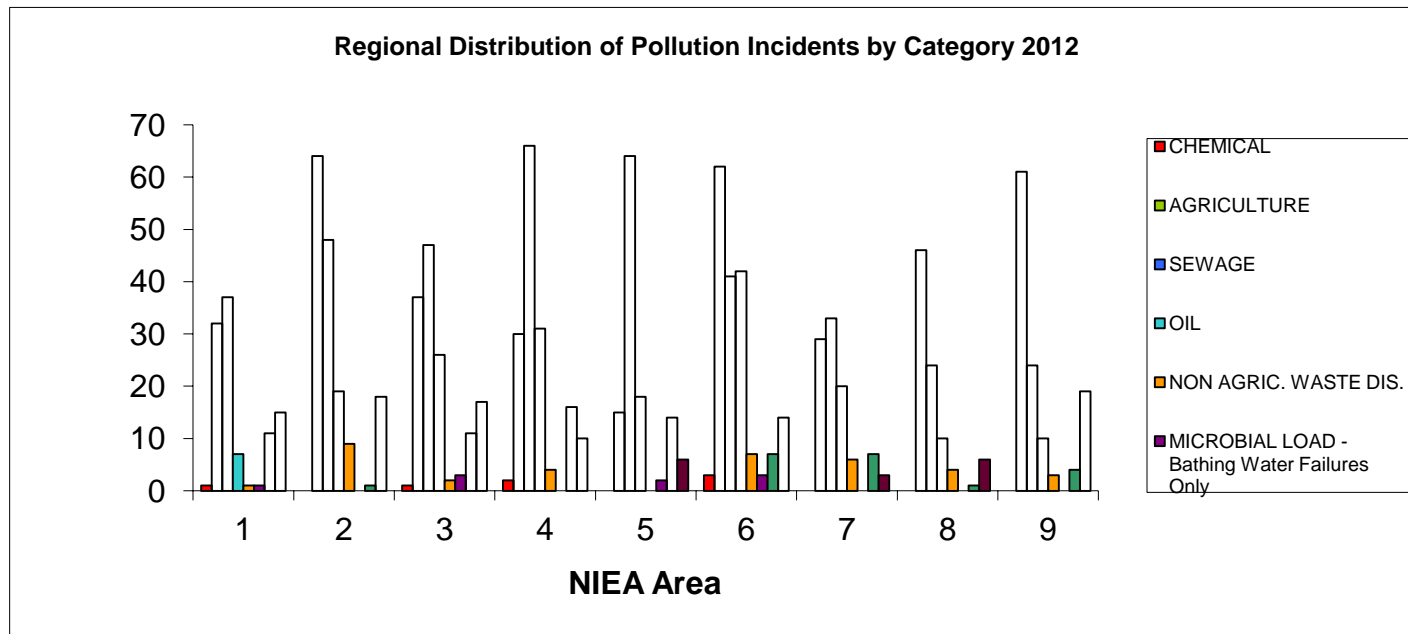


**Table 7: Regional Distribution of Pollution Incidents by Category 2012**

[Return to Index](#)

Category									
Area	CHEMICAL	AGRICULTURE	SEWAGE	OIL	NON AGRIC. WASTE DIS.	MICROBIAL LOAD - Bathing Water Failures Only	OTHER	SUSPENDED SOLIDS	Total
1	1	32	37	7	1	1	11	15	105
2	0	64	48	19	9	0	1	18	159
3	1	37	47	26	2	3	11	17	144
4	2	30	66	31	4	0	16	10	159
5	0	15	64	18	0	2	14	6	119
6	3	62	41	42	7	3	7	14	179
7	0	29	33	20	6	0	7	3	98
8	0	46	24	10	4	0	1	6	91
9	0	61	24	10	3	0	4	19	121
	<b>7</b>	<b>376</b>	<b>384</b>	<b>183</b>	<b>36</b>	<b>9</b>	<b>72</b>	<b>108</b>	<b>1175</b>

**Figure 12: Regional Distribution of Pollution Incidents by Category 2012**

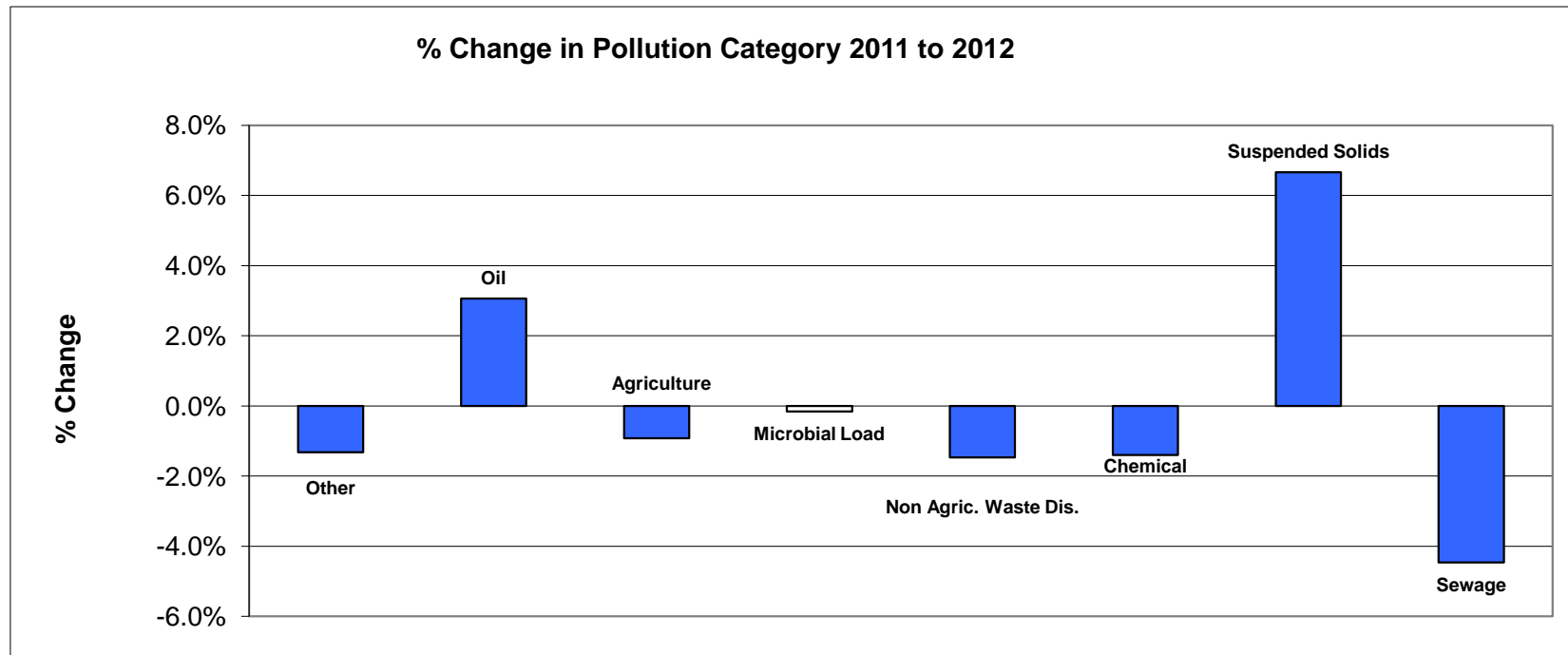


**Table 8: Percentage Change in Pollutant Category 2011 to 2012**

[Return to Index](#)

Category	2011	2011	2012	2012	Overall % Change
Other	97	7.4%	72	6.1%	-1.3%
Oil	163	12.5%	183	15.6%	3.1%
Agriculture	429	32.9%	376	32.0%	-0.9%
Microbial Load Bathing Water Failures	12	0.9%	9	0.8%	-0.2%
Non Agric. Waste Dis.	59	4.5%	36	3.1%	-1.5%
Chemical	26	2.0%	7	0.6%	-1.4%
Suspended Solids	33	2.5%	108	9.2%	6.7%
Sewage	484	37.1%	384	32.7%	-4.5%
<b>Total</b>	<b>1303</b>		<b>1175</b>		

**Figure 13: Percentage Change in Pollutant Category 2011 to 2012**



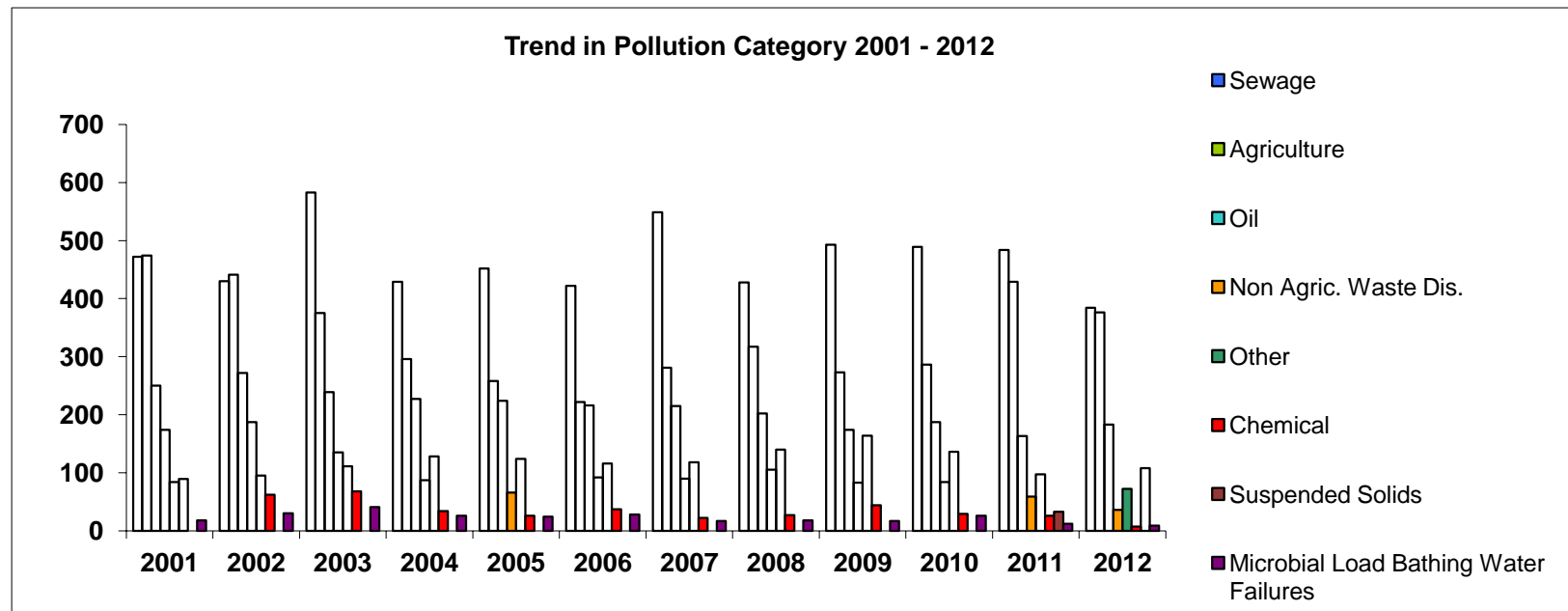


**Trend in Pollutant Category 2001 - 2012**

[Return to Index](#)

	2001	2002	2003	2004	2005	2006	2007	2008	2009	2010	2011	2012
Sewage	472	430	583	429	452	422	549	428	493	489	484	384
Agriculture	474	441	375	296	258	222	281	317	273	286	429	376
Oil	250	272	239	227	224	216	215	202	174	187	163	183
Non Agric. Waste Dis.	174	187	135	87	66	92	90	105	83	84	59	36
Other	84	95	111	128	124	116	118	140	164	136	97	72
Chemical	89	62	68	34	26	37	22	27	44	29	26	7
Suspended Solids	0	0	0	0	0	0	0	0	0	0	33	108
Microbial Load Bathing Water Failures	18	30	41	26	24	28	17	18	17	26	12	9
<b>Total</b>	<b>1561</b>	<b>1517</b>	<b>1552</b>	<b>1227</b>	<b>1174</b>	<b>1133</b>	<b>1292</b>	<b>1237</b>	<b>1248</b>	<b>1237</b>	<b>1303</b>	<b>1175</b>

**Figure 14: Trend in Pollutant Category 2001 - 2012**

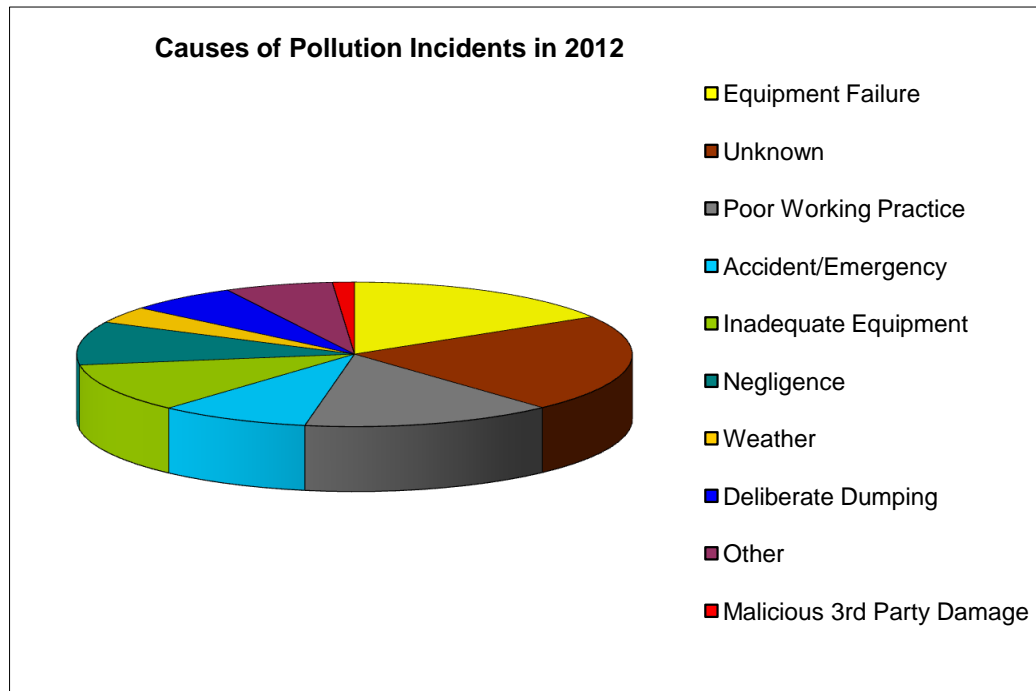


**Table 9: Cause of Pollution Incidents in 2012**

[Return to Index](#)

CAUSE	Total No. of Incidents	As a % of the total
Equipment Failure	192	16.3%
Unknown	257	21.9%
Poor Working Practice	172	14.6%
Accident/Emergency	103	8.8%
Inadequate Equipment	129	11.0%
Negligence	114	9.7%
Weather	44	3.7%
Deliberate Dumping	75	6.4%
Other	74	6.3%
Malicious 3rd Party Damage	15	1.3%
	<b>1175</b>	<b>100%</b>

**Figure 15: Cause of Pollution Incidents in 2012**

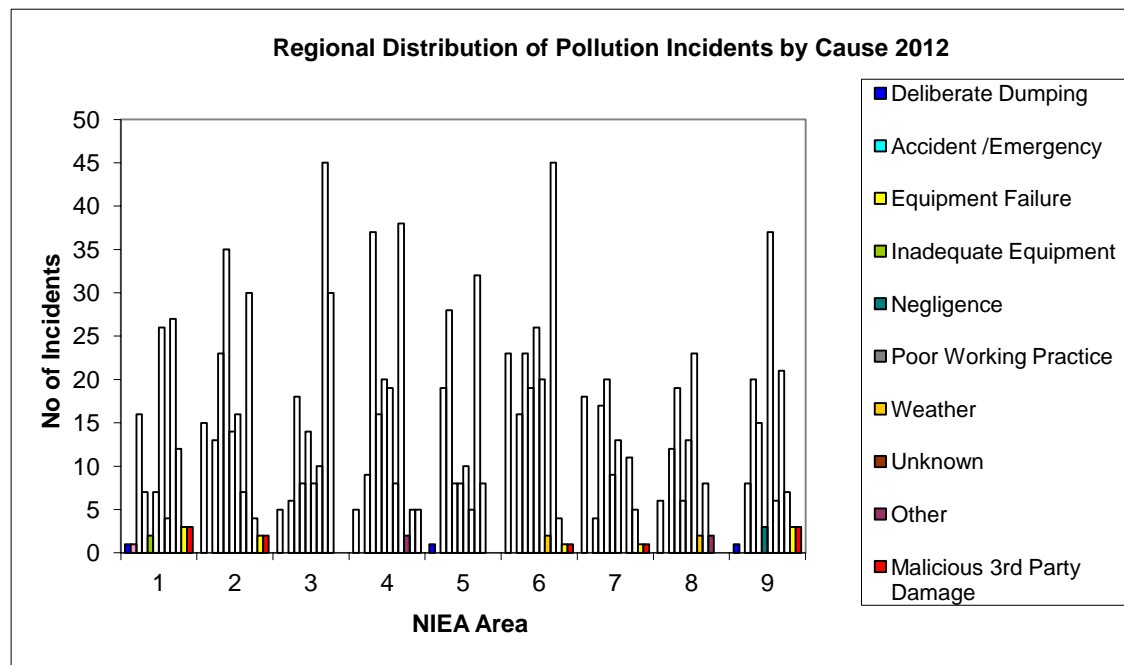


**Table 10: Regional Distribution of Pollution Incidents by Cause in 2012**

[Return to Index](#)

Area	Deliberate Dumping	Accident /Emergency	Equipment Failure	Inadequate Equipment	Negligence	Poor Working Practice	Weather	Unknown	Malicious 3rd Party Damage	Other	Total
1	1	16	7	2	7	26	4	27	3	12	105
2	15	13	23	35	14	16	7	30	2	4	159
3	5	6	18	8	14	8	10	45	0	30	144
4	5	9	37	16	20	19	8	38	5	2	159
5	1	19	28	8	8	10	5	32	0	8	119
6	23	16	23	19	26	20	2	45	1	4	179
7	18	4	17	20	9	13	0	11	1	5	98
8	6	12	19	6	13	23	2	8	0	2	91
9	1	8	20	15	3	37	6	21	3	7	121
<b>Total</b>	<b>75</b>	<b>103</b>	<b>192</b>	<b>129</b>	<b>114</b>	<b>172</b>	<b>44</b>	<b>257</b>	<b>0</b>	<b>74</b>	<b>1175</b>

**Figure 16: Regional Distribution of Pollution Incidents by Cause in 2012**

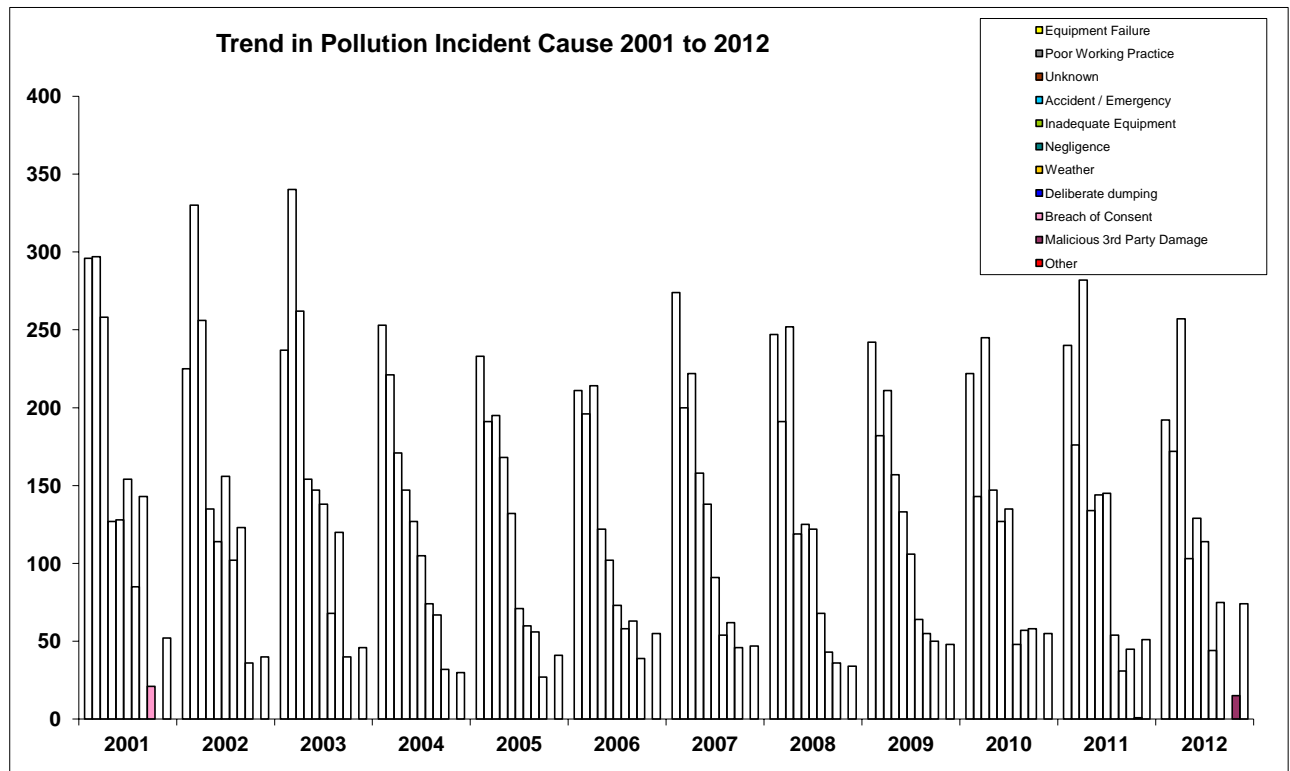


**Trend in Pollution Incident Cause 2001 to 2012**

[Return to Index](#)

	2001	2002	2003	2004	2005	2006	2007	2008	2009	2010	2011	2012
Equipment Failure	296	225	237	253	233	211	274	247	242	222	240	192
Poor Working Practice	297	330	340	221	191	196	200	191	182	143	176	172
Unknown	258	256	262	171	195	214	222	252	211	245	282	257
Accident / Emergency	127	135	154	147	168	122	158	119	157	147	134	103
Inadequate Equipment	128	114	147	127	132	102	138	125	133	127	144	129
Negligence	154	156	138	105	71	73	91	122	106	135	145	114
Weather	85	102	68	74	60	58	54	68	64	48	54	44
Deliberate dumping	143	123	120	67	56	63	62	43	55	57	31	75
Breach of Consent	21	36	40	32	27	39	46	36	50	58	45	0
Malicious 3rd Party Damage	0	0	0	0	0	0	0	0	0	0	1	15
Other	52	40	46	30	41	55	47	34	48	55	51	74
<b>Total</b>	<b>1561</b>	<b>1517</b>	<b>1552</b>	<b>1227</b>	<b>1174</b>	<b>1133</b>	<b>1292</b>	<b>1237</b>	<b>1248</b>	<b>1237</b>	<b>1303</b>	<b>1175</b>

**Figure 17: Trend in Pollution Incident Cause 2001 to 2012**

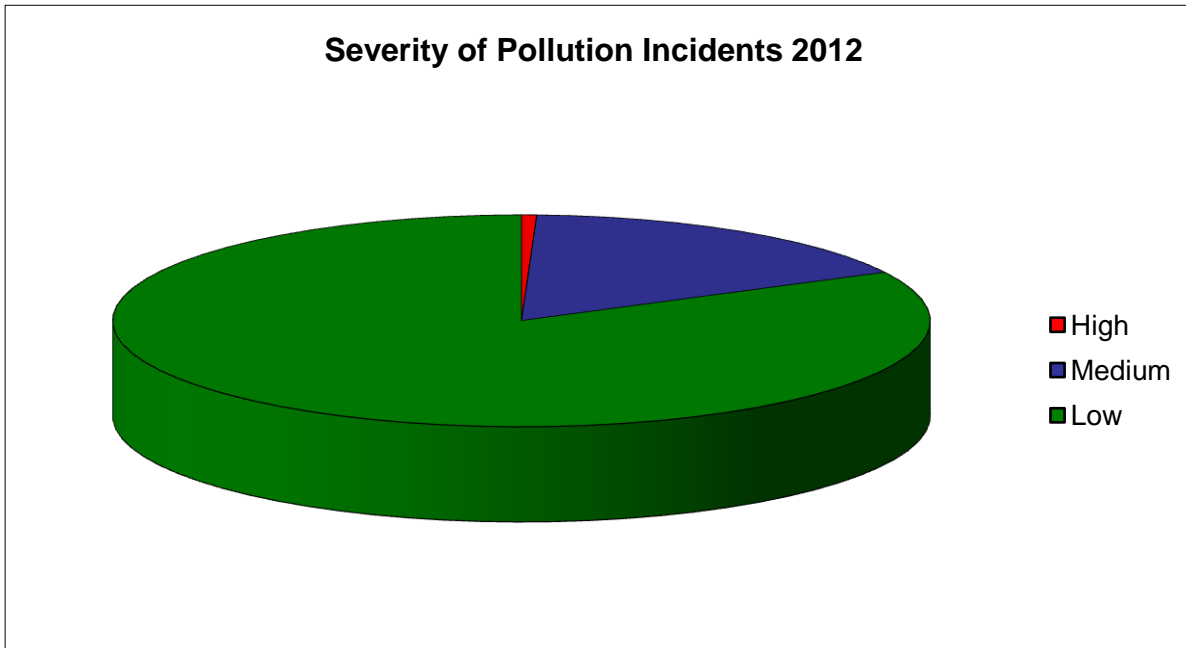


**Table 11: Severity of Pollution Incidents 2012**

[Return to Index](#)

	No. of Incidents	As a % of the total
High	7	0.6%
Medium	198	16.9%
Low	970	82.6%
<b>Total</b>	<b>1175</b>	

**Figure 18: Severity of Pollution Incidents 2012**

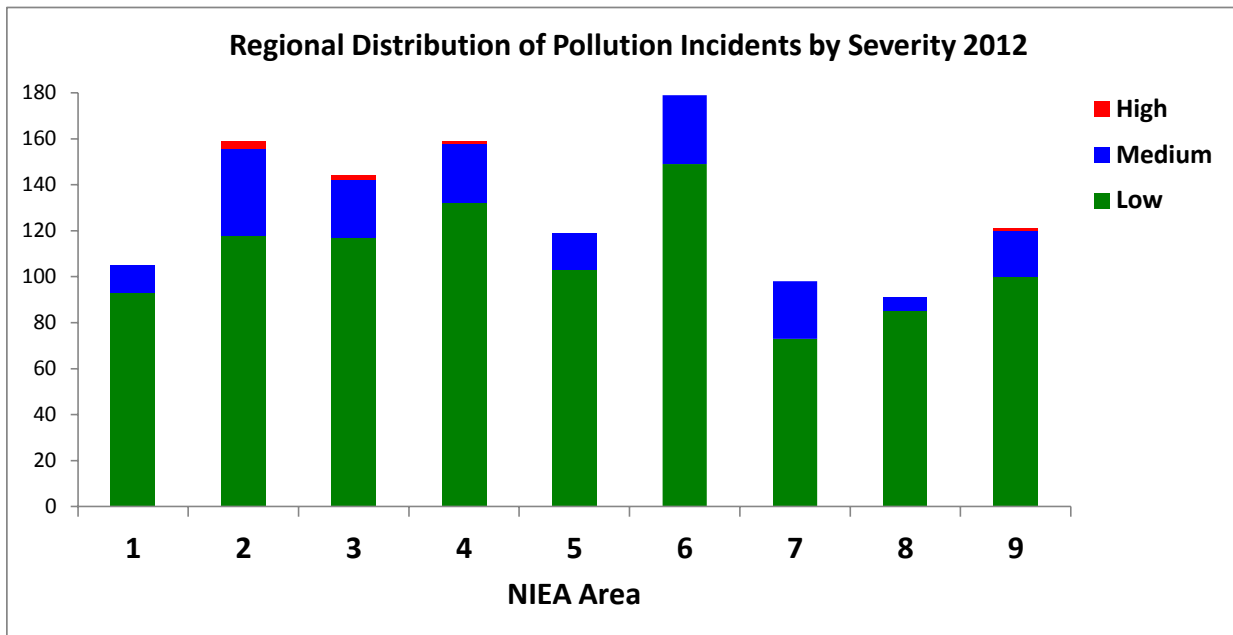


**Table 12: Regional Distribution of Pollution Incidents by Severity in 2012**

Area	Severity			Total
	Low	Medium	High	
1	93	12	0	105
2	118	38	3	159
3	117	25	2	144
4	132	26	1	159
5	103	16	0	119
6	149	30	0	179
7	73	25	0	98
8	85	6	0	91
9	100	20	1	121
<b>Total</b>	<b>970</b>	<b>198</b>	<b>7</b>	<b>1175</b>

[Return to Index](#)

**Figure 19: Regional Distribution of Pollution Incidents by Severity in 2012**

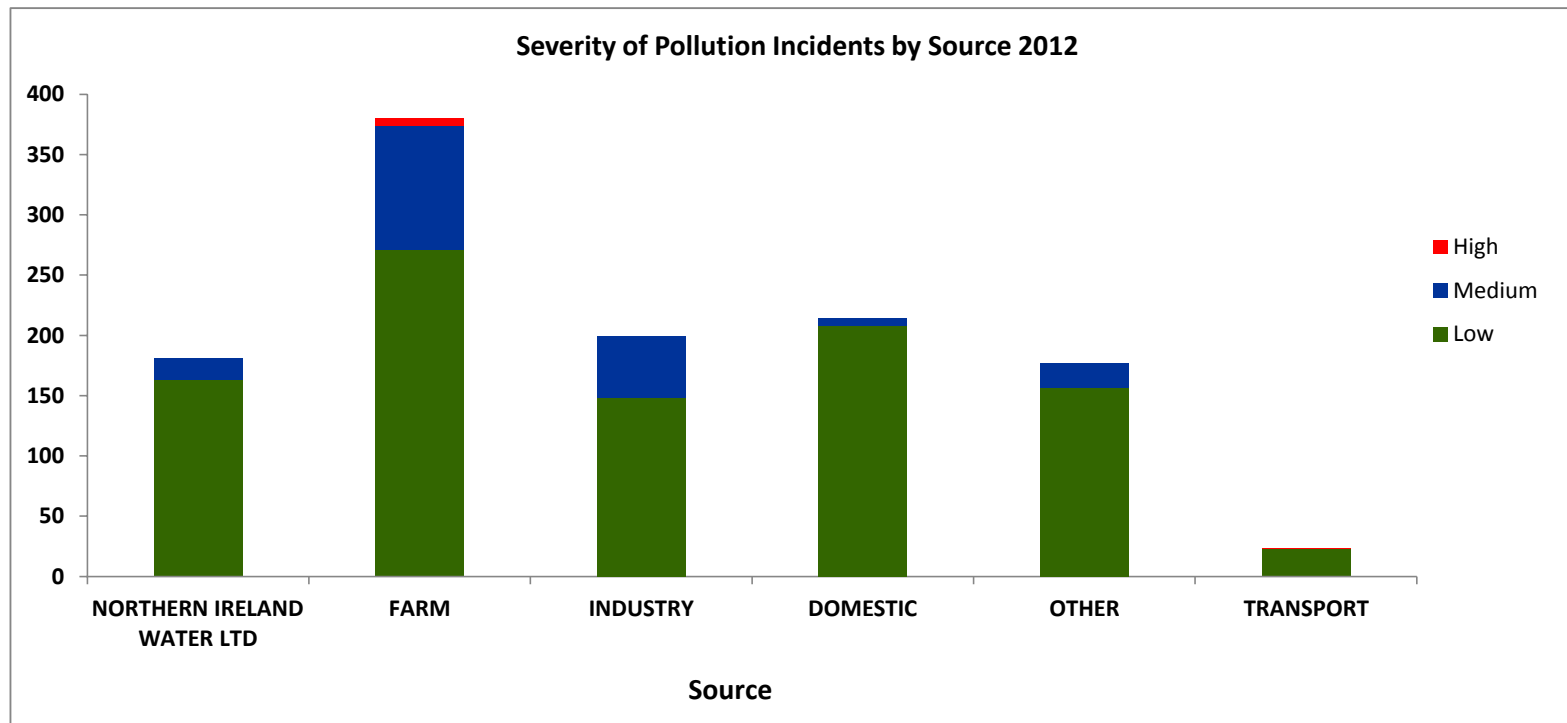


**Table 13: Severity of Pollution Incidents by Source 2012**

[Return to Index](#)

SOURCE	Low	Medium	High	Total
NORTHERN IRELAND WATER LTD	163	18	0	181
FARM	271	103	6	380
INDUSTRY	148	51	0	199
DOMESTIC	208	6	0	214
OTHER	157	20	0	177
TRANSPORT	23	0	1	24
<b>Total</b>	<b>970</b>	<b>198</b>	<b>7</b>	<b>1175</b>

**Figure 20: Severity of Pollution Incidents by Source 2012**

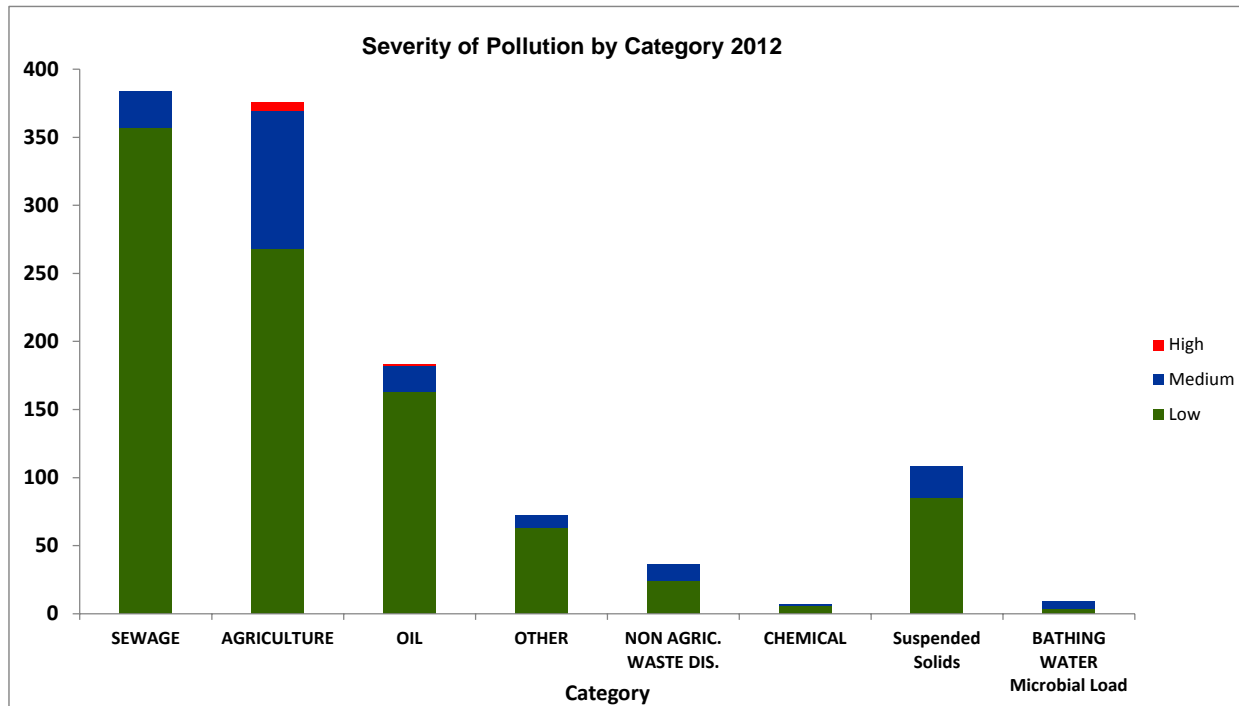


**Table 14: Severity of Pollution Incidents by Category 2012**

[Return to Index](#)

Category Name	High	Medium	Low	Total
SEWAGE	0	27	357	384
AGRICULTURE	6	102	268	376
OIL	1	19	163	183
OTHER	0	9	63	72
NON AGRIC. WASTE DIS.	0	12	24	36
CHEMICAL	0	1	6	7
Suspended Solids	0	23	85	108
BATHING WATER Microbial Load	0	5	4	9
<b>Total</b>	<b>7</b>	<b>198</b>	<b>970</b>	<b>1175</b>

**Figure 21: Severity of Pollution Incidents by Category 2012**



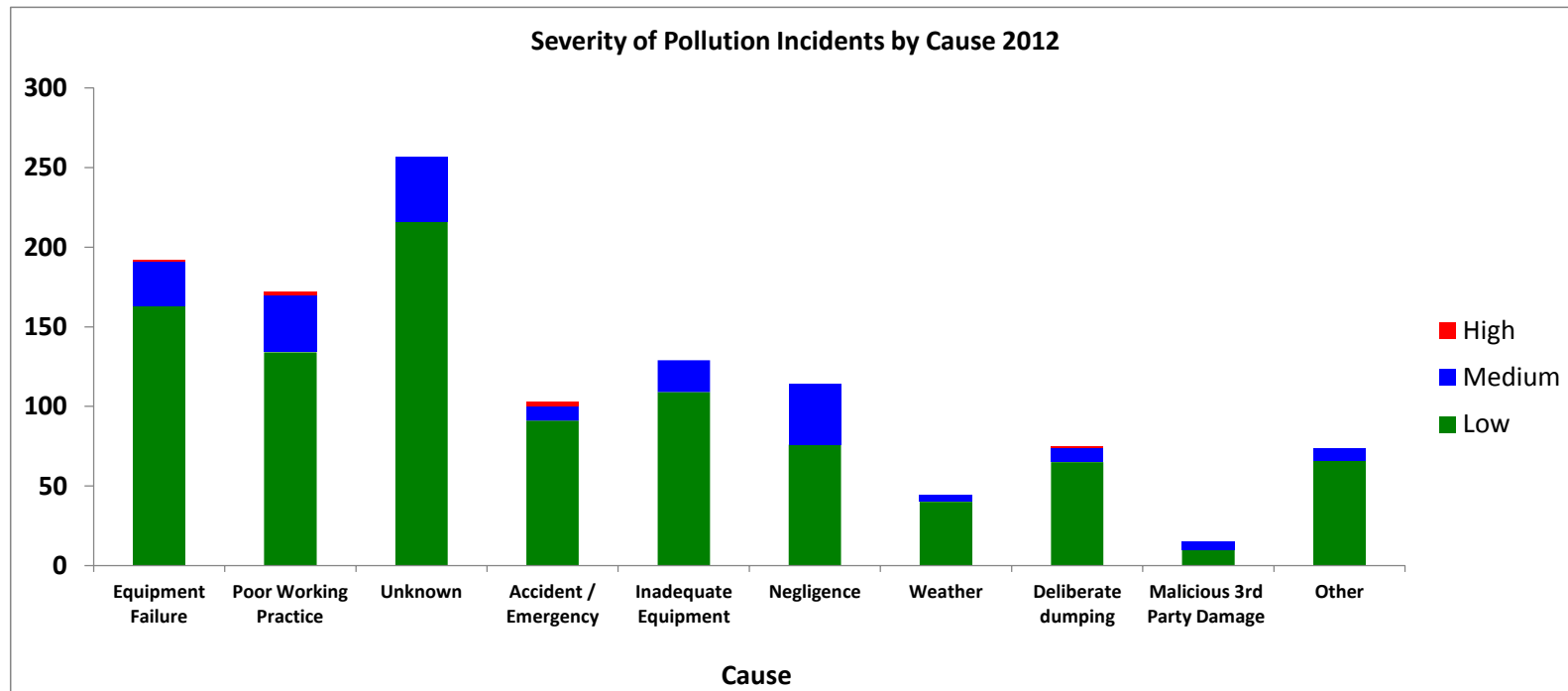


**Table 15: Severity of Pollution Incidents by Cause 2012**

[Return to Index](#)

Cause	Low	Medium	High	Total
Equipment Failure	163	28	1	192
Poor Working Practice	134	36	2	172
Unknown	216	41	0	257
Accident / Emergency	91	9	3	103
Inadequate Equipment	109	20	0	129
Negligence	76	38	0	114
Weather	40	4	0	44
Deliberate dumping	65	9	1	75
Malicious 3rd Party Damage	10	5	0	15
Other	66	8	0	74
<b>Total</b>	<b>970</b>	<b>198</b>	<b>7</b>	<b>1175</b>

**Figure 22: Severity of Pollution Incidents by Cause 2012**

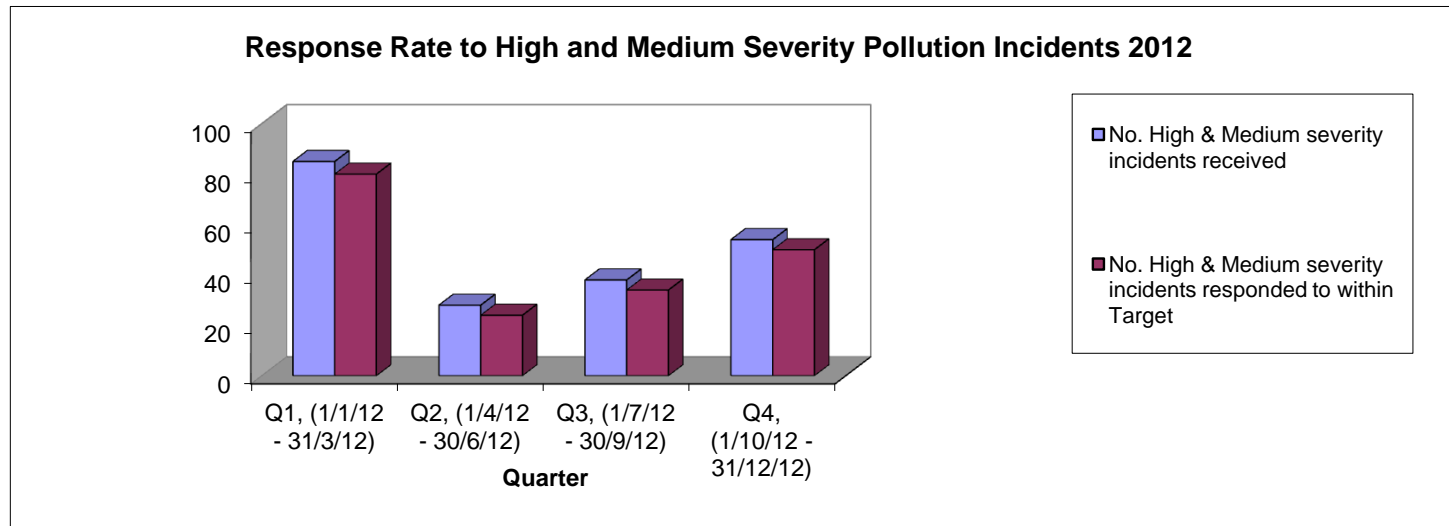


**Table 16: Response Rate to High and Medium Severity Pollution Incidents 2012**

[Return to Index](#)

Time period	No. High & Medium severity incidents received	No. High & Medium severity incidents responded to within Target	% High & Medium severity incidents responded to within Target
<b>Q1</b> , (1/1/12 - 31/3/12)	85	80	94.1%
<b>Q2</b> , (1/4/12 - 30/6/12)	28	24	85.7%
<b>Q3</b> , (1/7/12 - 30/9/12)	38	34	89.5%
<b>Q4</b> , (1/10/12 - 31/12/12)	54	50	92.6%
<b>Total for 2012</b>	<b>205</b>	<b>188</b>	<b>94.0%</b>

**Figure 23: Response Rate to High and Medium Severity Pollution Incidents 2012**

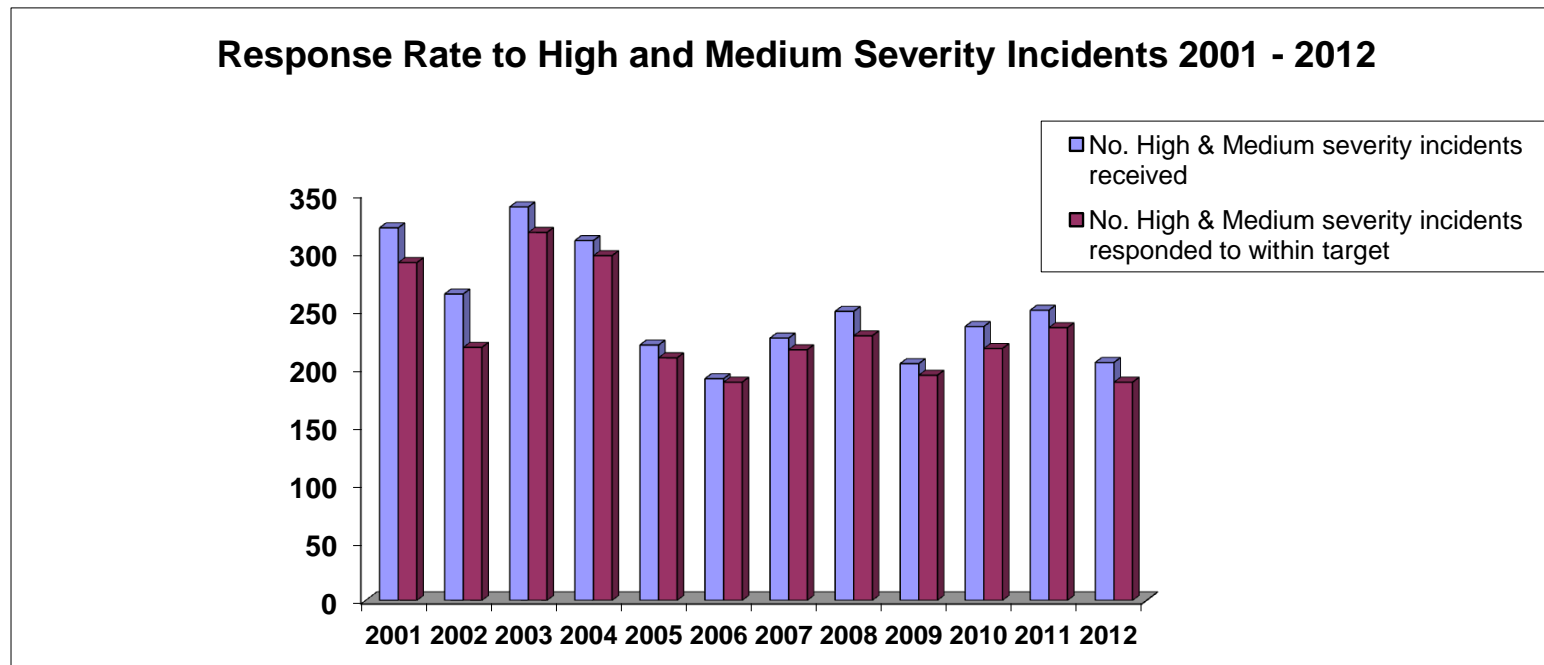


**Table 17: Response Rate to High and Medium Severity Pollution Incidents 2001 to 2012**

[Return to Index](#)

	2001	2002	2003	2004	2005	2006	2007	2008	2009	2010	2011	2012
<b>No. High &amp; Medium severity incidents received</b>	321	264	339	310	220	191	226	249	204	236	250	205
<b>No. High &amp; Medium severity incidents responded to within target</b>	291	218	317	297	209	188	216	228	194	217	235	188
<b>Response rate (%)</b>	<b>90.7%</b>	<b>82.6%</b>	<b>93.5%</b>	<b>95.8%</b>	<b>95.0%</b>	<b>98.4%</b>	<b>95.5%</b>	<b>91.6%</b>	<b>95.1%</b>	<b>91.9%</b>	<b>94.0%</b>	<b>94.0%</b>

**Figure 24: Response Rate to High and Medium Severity Pollution Incidents 2001 to 2012**

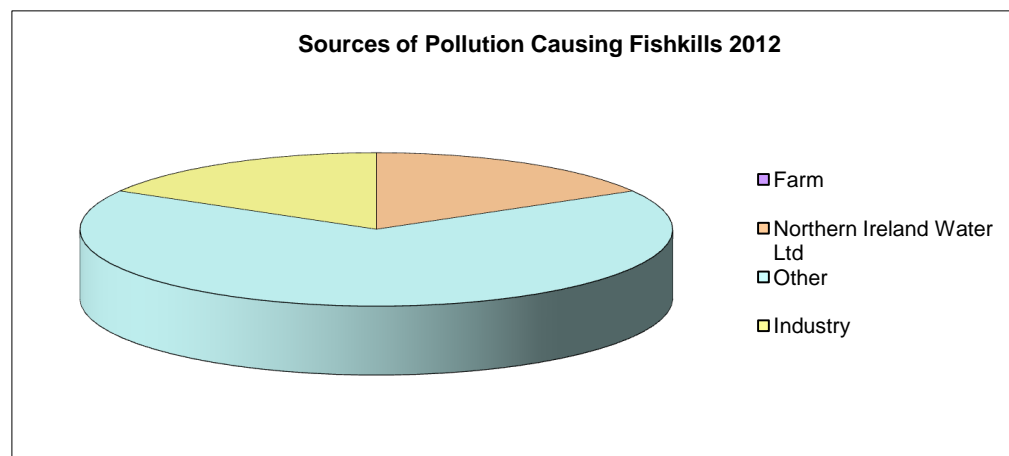


**Table 18: Sources of Pollution Causing FishKills in 2012**

[Return to Index](#)

Source	As a % of the total	2012
Farm	0.0	0
Northern Ireland Water Ltd	16.7	1
Other	66.7	4
Industry	16.7	1
Transport	0.0	0
Domestic	0.0	0
<b>Total</b>		<b>6</b>

**Figure 25: Sources of Pollution Causing FishKills in 2012**

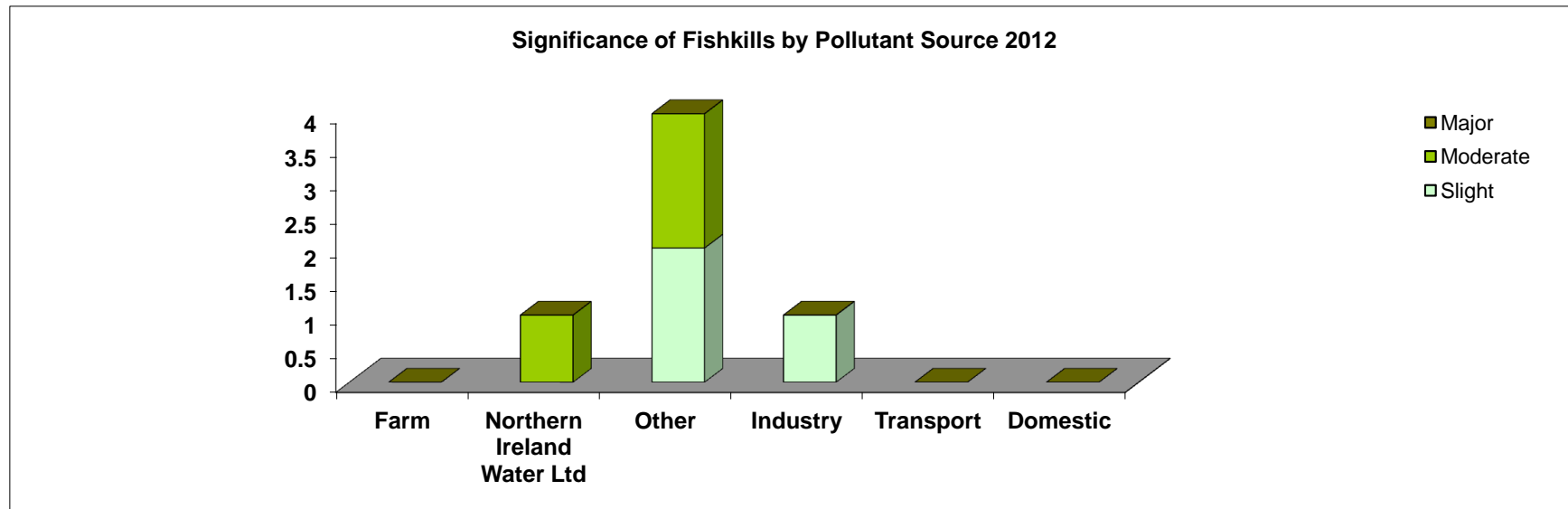


**Table 19: Significance of FishKills by Pollutant Source 2012**

[Return to Index](#)

Source	Slight	Moderate	Major	Total
Farm	0	0	0	0
Northern Ireland Water Ltd	0	1	0	1
Other	2	2	0	4
Industry	1	0	0	1
Transport	0	0	0	0
Domestic	0	0	0	0
<b>Total</b>	<b>3</b>	<b>3</b>	<b>0</b>	<b>6</b>

**Figure 26: Significance of FishKills by Pollutant Source 2012**

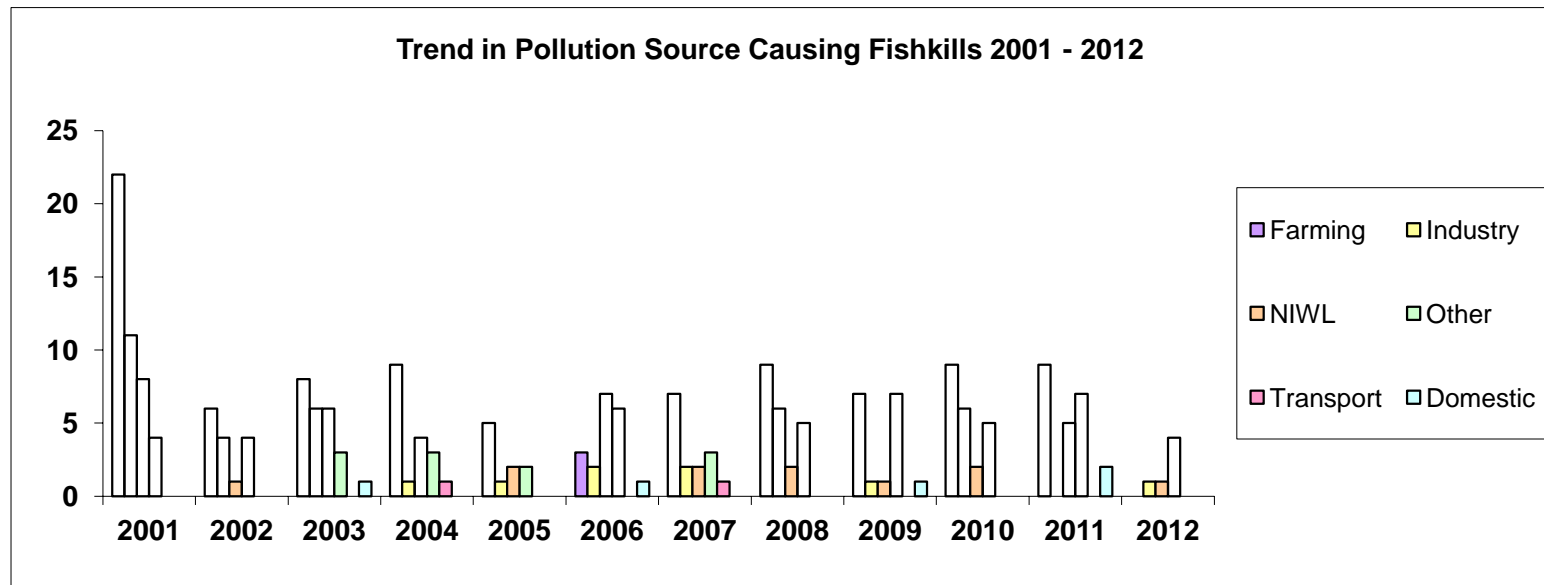


**Trend in Pollution Source Causing FishKills 2001 to 2012**

[Return to Index](#)

	2001	2002	2003	2004	2005	2006	2007	2008	2009	2010	2011	2012	Total
<b>Farming</b>	22	6	8	9	5	3	7	9	7	9	9	0	<b>94</b>
<b>Industry</b>	11	4	6	1	1	2	2	6	1	6	0	1	<b>41</b>
<b>NIWL</b>	8	1	6	4	2	7	2	2	1	2	5	1	<b>41</b>
<b>Other</b>	4	4	3	3	2	6	3	5	7	5	7	4	<b>53</b>
<b>Transport</b>	0	0	0	1	0	0	1	0	0	0	0	0	<b>2</b>
<b>Domestic</b>	0	0	1	0	0	1	0	0	1	0	2	0	<b>5</b>
<b>Total</b>	<b>45</b>	<b>15</b>	<b>24</b>	<b>18</b>	<b>10</b>	<b>19</b>	<b>15</b>	<b>22</b>	<b>17</b>	<b>22</b>	<b>23</b>	<b>6</b>	<b>236</b>

**Figure 27: Trend in Pollution Source Causing FishKills 2001 to 2012**



**Table 20: Summary of Cases Referred to PPS for Incidents that Occurred in 2011**[Return to Index](#)

<b>Summary of Cases Referred to PPS with a Recommendation for Prosecution, for Incidents that occurred during 2011 (As at 31/07/2013)</b>		
<b>Category</b>	<b>Cases referred to PPS for prosecution</b>	<b>% of the total</b>
<b>Agriculture</b>	<b>46</b>	<b>70.8%</b>
<b>Non Agric. Waste Dis.</b>	<b>0</b>	<b>0.0%</b>
<b>Breach Of Consent</b>	<b>5</b>	<b>7.7%</b>
<b>Sewage</b>	<b>7</b>	<b>10.8%</b>
<b>Chemical</b>	<b>1</b>	<b>1.5%</b>
<b>Oil</b>	<b>1</b>	<b>1.5%</b>
<b>Other</b>	<b>5</b>	<b>7.7%</b>
<b>Total</b>	<b>65</b>	<b>100%</b>

**Table 21: Costs and Fines Imposed under the Water (NI) Order 1999, for Incidents that occurred in 2011 (As at 31/07/2013)**

CATEGORY	Analysis Costs	Court Costs	Fines	Total
Agriculture	£11,100.77	£1,239.00	£32,025.00	£44,364.77
Breach of Consent	£0.00	£28.00	£3,500.00	£3,528.00
Chemical	£1,046.09	£31.00	£100.00	£1,177.09
Non Agricultural Waste Discharge	£428.77	£0.00	£0.00	£428.77
Oil	£998.15	£22.00	£0.00	£1,020.15
Other	£2,905.22	£0.00	£500.00	£3,405.22
Sewage	£2,636.54	£171.00	£16,000.00	£18,807.54
<b>TOTAL</b>	<b>£19,115.54</b>	<b>£1,491.00</b>	<b>£52,125.00</b>	<b>£72,731.54</b>

[Return to Index](#)



**Table 22: Water Pollution Prosecution Cases and Warning Letters 2000 to 2011 (As at 31/07/2013)**

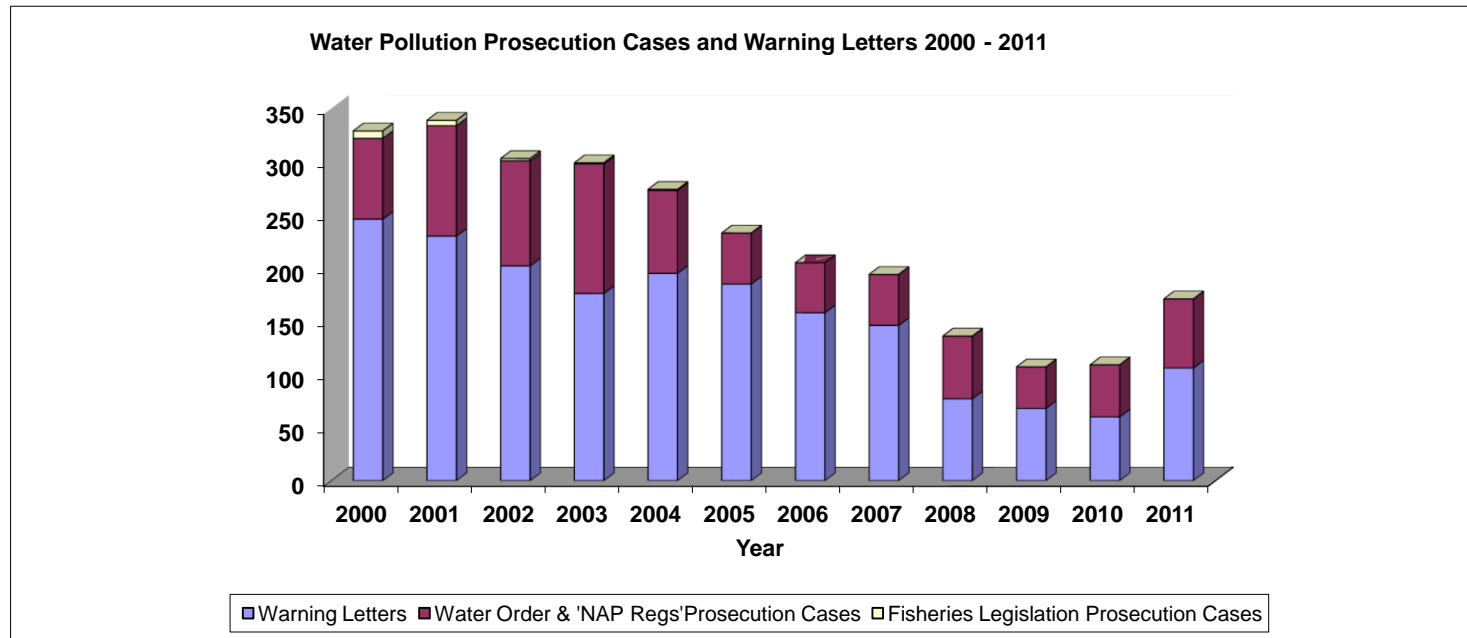
<b>Year</b>	<b>Water Order &amp; 'NAP Regs' Prosecution Cases</b>	<b>Fisheries Legislation Prosecution Cases</b>	<b>Total Prosecution Cases</b>	<b>Warning Letters</b>
2000	76	7	83	246
2001	104	5	109	230
2002	99	2	101	202
2003	122	1	123	176
2004	78	1	79	195
2005	48	0	48	185
2006	47	0	47	158
2007	48	0	48	146
2008	59	0	61	77
2009	39	0	39	68
2010	49	0	49	60
2011	65	0	65	106

**Water Pollution Prosecution Cases and Warning Letters 2000 to 2011 (As at 31/07/2013)**

[Return to Index](#)

	Warning Letters	Water Order & 'NAP Regs' Prosecution Cases	Fisheries Legislation Prosecution Cases	Total Prosecution Cases
2000	246	76	7	83
2001	230	104	5	109
2002	202	99	2	101
2003	176	122	1	123
2004	195	78	1	79
2005	185	48	0	48
2006	158	47	0	47
2007	146	48	0	48
2008	77	59	0	59
2009	68	39	0	39
2010	60	49	0	49
2011	106	65	0	65

**Figure 28: Water Pollution Prosecution Cases and Warning Letters 2000 to 2011**



**Table 23: Number of Proactive Pollution Prevention Inspections by Sector 2012**

Sector	Number of Inspections
Industrial Estate Surveys	107
Major Linear works	5
Oil/Fuel/Hydrocarbons	61
Other	1
<b>TOTAL</b>	<b>174</b>

**Figure 29: Number of Proactive Pollution Prevention Inspections by Sector 2012**

